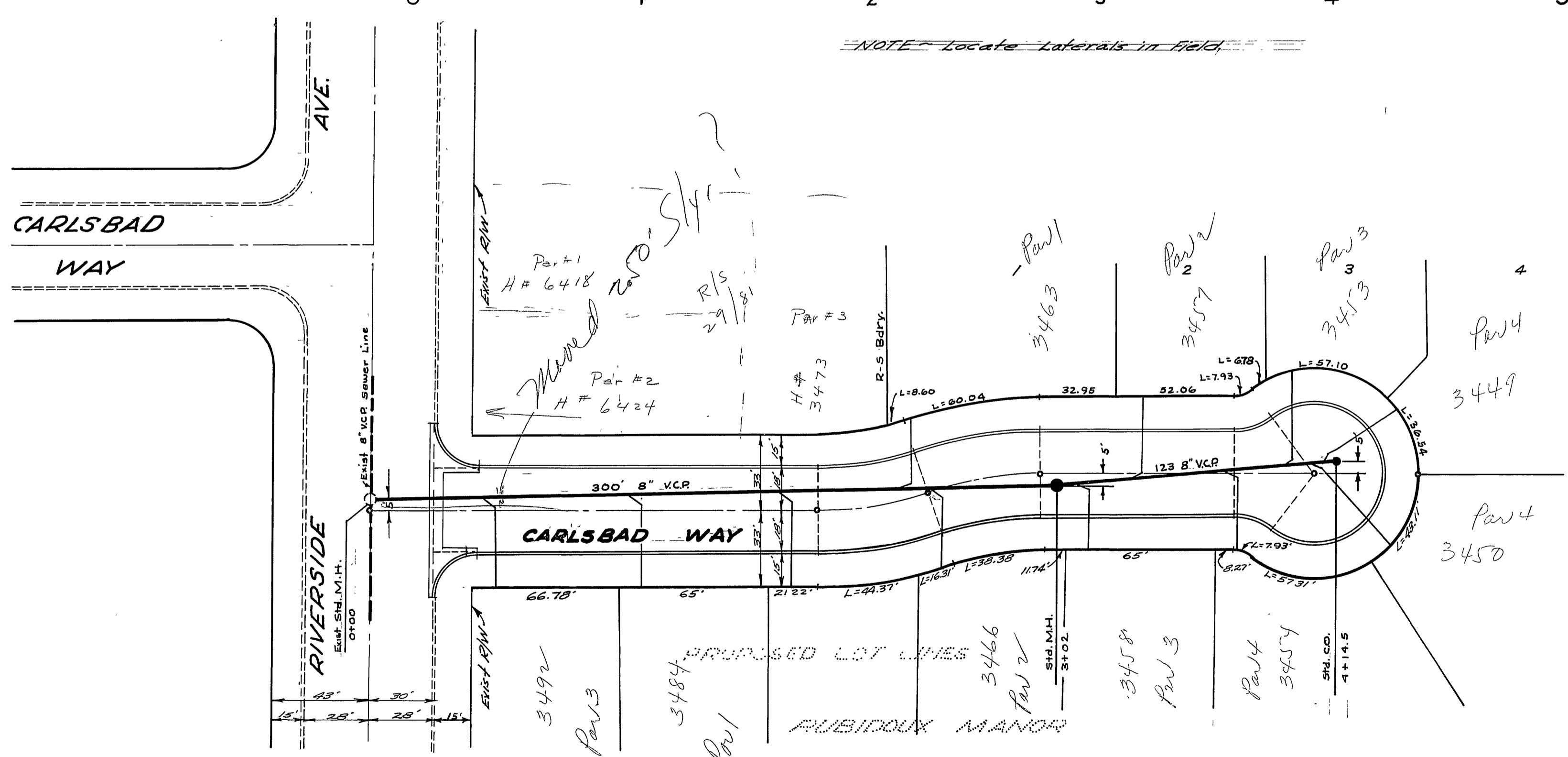


BENCH MARK
City B.M. - Pk. nail in N.W. Cor. return at Bonita Ave and Nava Pl.
Elev. = 841.80
City B.M. - Nail in N.W. Cor. 49' Ely. from prop. & Riverside Ave on Bonita Ave
Elev. = 840.40

NOTE - Locate Laterals in Field.



WIDSON-CIVIL ENGINEER
R.E. No. 362
RIVERSIDE, CALIFORNIA
BY *J. Widson* DATE 7-26-87
RIVERSIDE, CALIFORNIA
DEPT. OF PUBLIC WORKS

SEWER PLAN & PROFILE
CARLSBAD WAY

R/S - 24/87
1" = 40' VERT. SCALE 1" = 4'

J. Widson S-52
Aug. 20, 1987