

Bench Mark: Top of 4" I.P. filled with Conc. of South West Corner of Sec. 91 Elevation 1136.41

- GENERAL NOTES:**
- Construction shall be in accordance with the City of Riverside, Department of Public Works, Standard Specifications No. 461 and Standard Drawings.
  - It shall be the responsibility of the contractor to clear the right of way in accordance with the provisions of the law as it affects each utility including irrigation lines and appurtenances and at no cost to the City.
  - Joints in vitrified clay pipe sewers shall conform to ASTM Standard C-425-50T or the latest revision thereof.
  - Pipe shall be bedded per Case II, Standard Drawing No. 452, unless otherwise specified on plan.
  - Location of wyes and laterals to be determined in the field, all laterals to be 4" unless otherwise noted.
  - Street Improvements per Riverside City Plan No. 2-829.

REVISIONS	
MARK	DESCRIPTION
▲	3/29/65 Revised M.H.'s No. 3 & 4 to show drop through bottom. JFM

FD. 865-53 853-23 837-53656

**J. F. DAVIDSON-CIVIL ENGINEER**  
R.E. NO. 862  
RIVERSIDE, CALIFORNIA  
APPROVED BY *J. F. Davidson* DATE 1-28-64

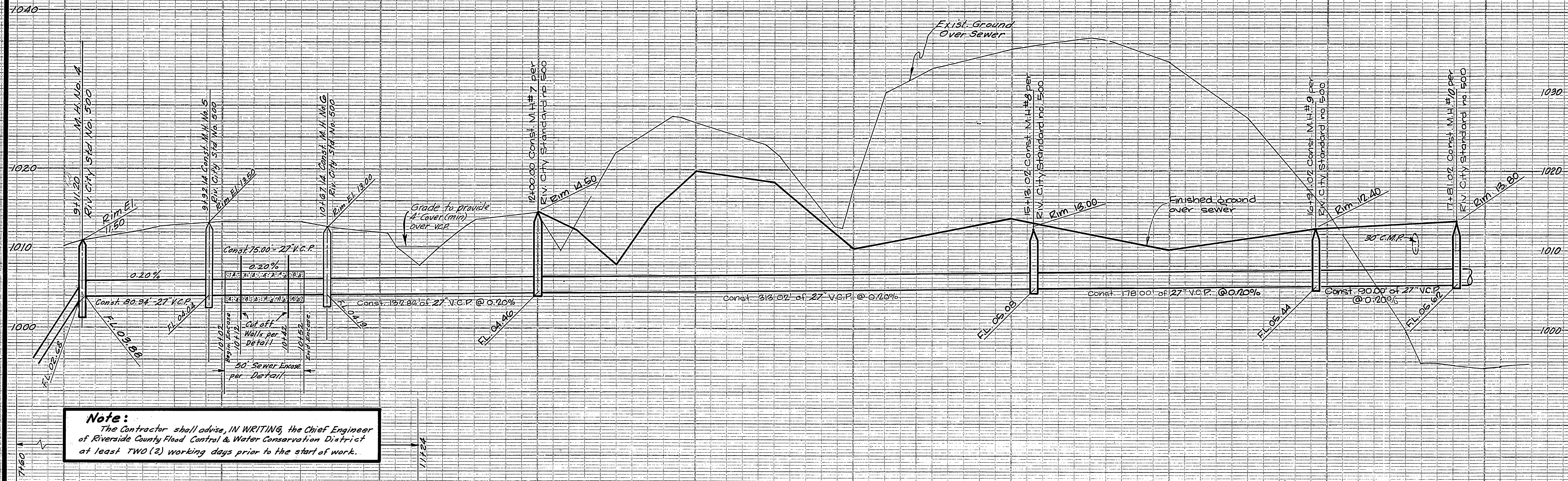
**CITY OF RIVERSIDE, CALIFORNIA**  
**DEPARTMENT OF PUBLIC WORKS**

Sewer PLAN & PROFILE  
**TRUNK LINE 2880**  
Sta. 0+00 to 9+11.20  
HORIZ. SCALE 1"=40' VERT. SCALE 1"=8'

DESIGNED BY  
DRAWN BY  
RECOMMENDED BY *Michael*  
ASSISTANT CITY ENGINEER

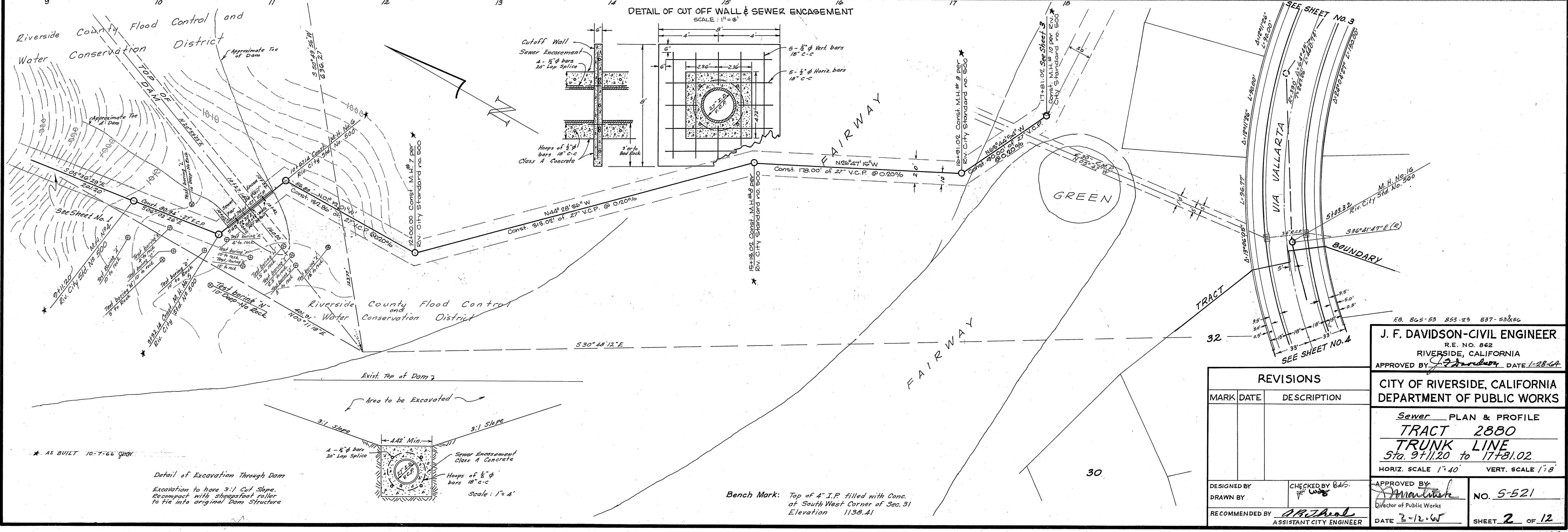
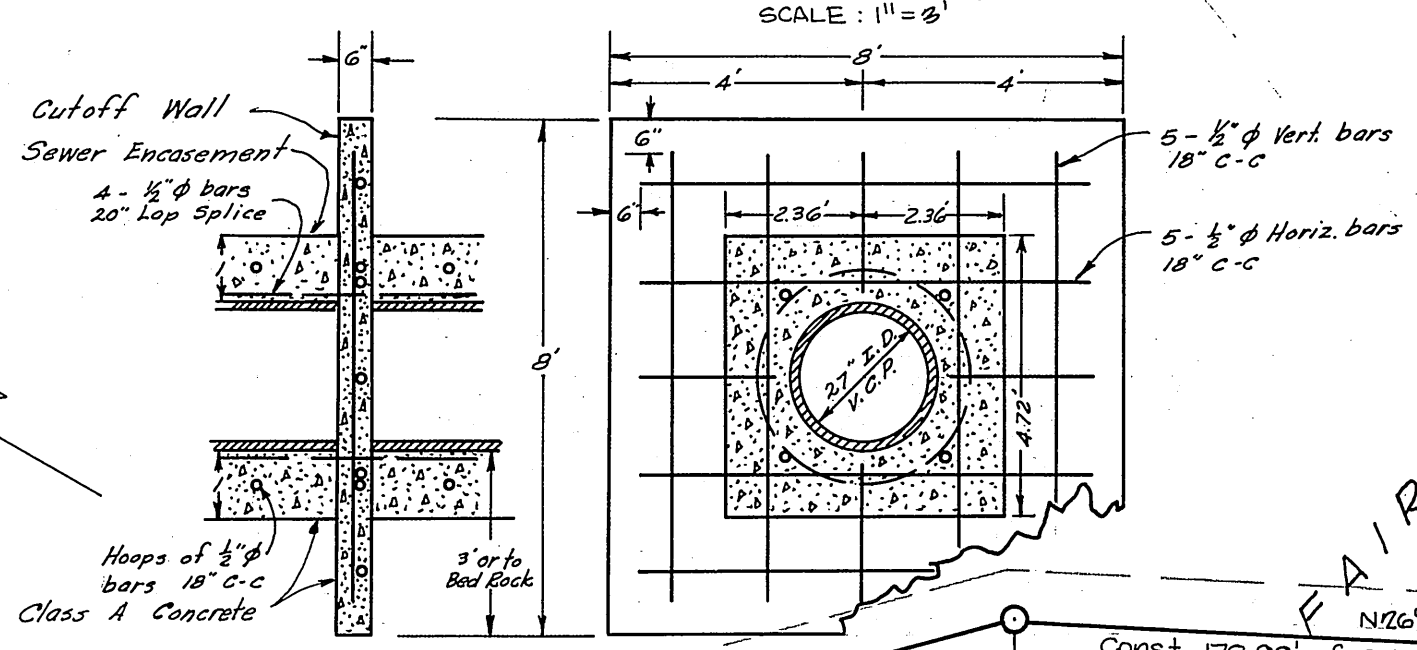
CHECKED BY Bob S.  
APPROVED BY *J. F. Davidson*  
CITY ENGINEER

NO. 5-521  
DATE 3-12-65 SHEET 1 OF 12



**Note:**  
The Contractor shall advise, IN WRITING, the Chief Engineer of Riverside County Flood Control & Water Conservation District at least TWO (2) working days prior to the start of work.

DETAIL OF CUT OFF WALL & SEWER ENCASEMENT  
SCALE: 1" = 8'



Detail of Excavation Through Dam  
Excavation to have 3:1 Cut Slope.  
Backcompact with sheepsfoot roller  
to tie into original dam structure

Bench Mark: Top of 4" I.P. filled with Conc.  
at South West Corner of Sec. 31  
Elevation 1138.41

J. F. DAVIDSON-CIVIL ENGINEER  
R.E. NO. 862  
RIVERSIDE, CALIFORNIA  
APPROVED BY: *J. Davidson* DATE 1-28-64

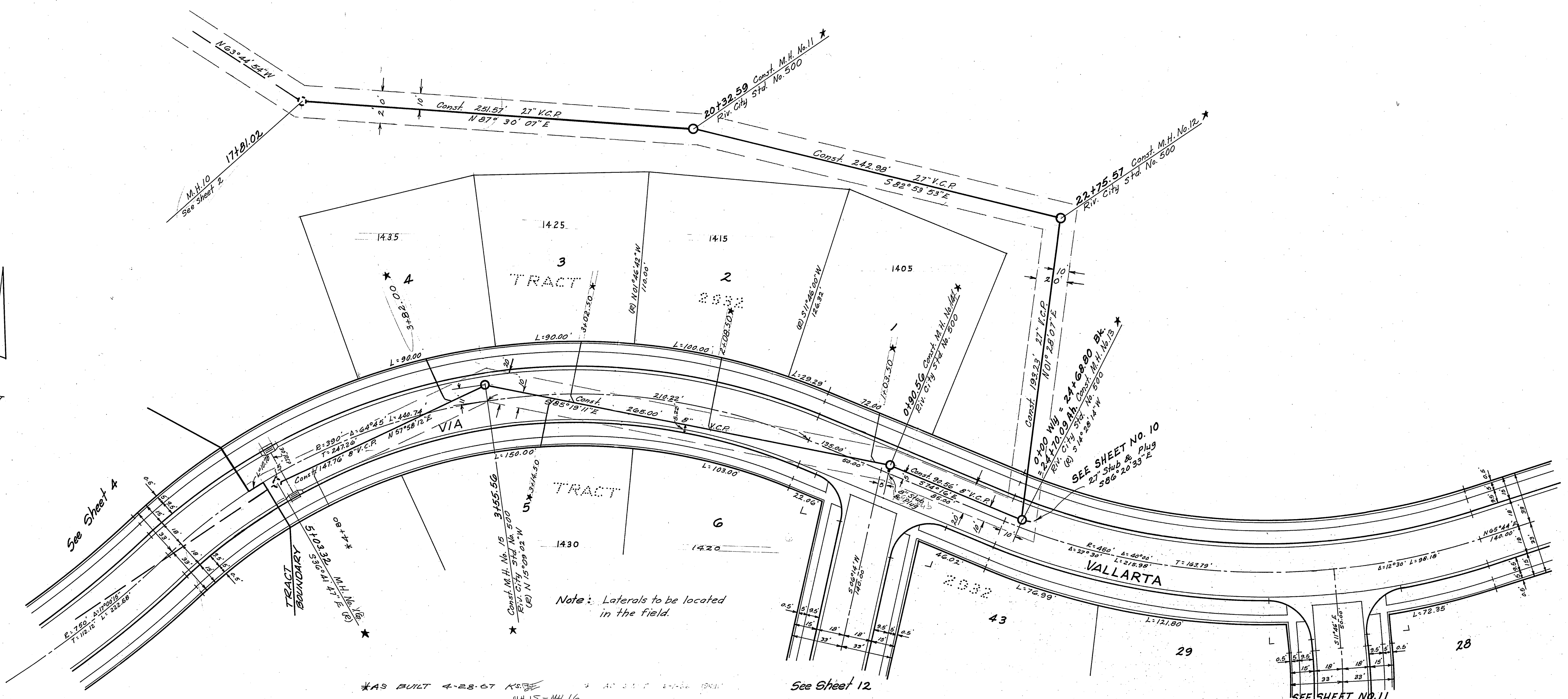
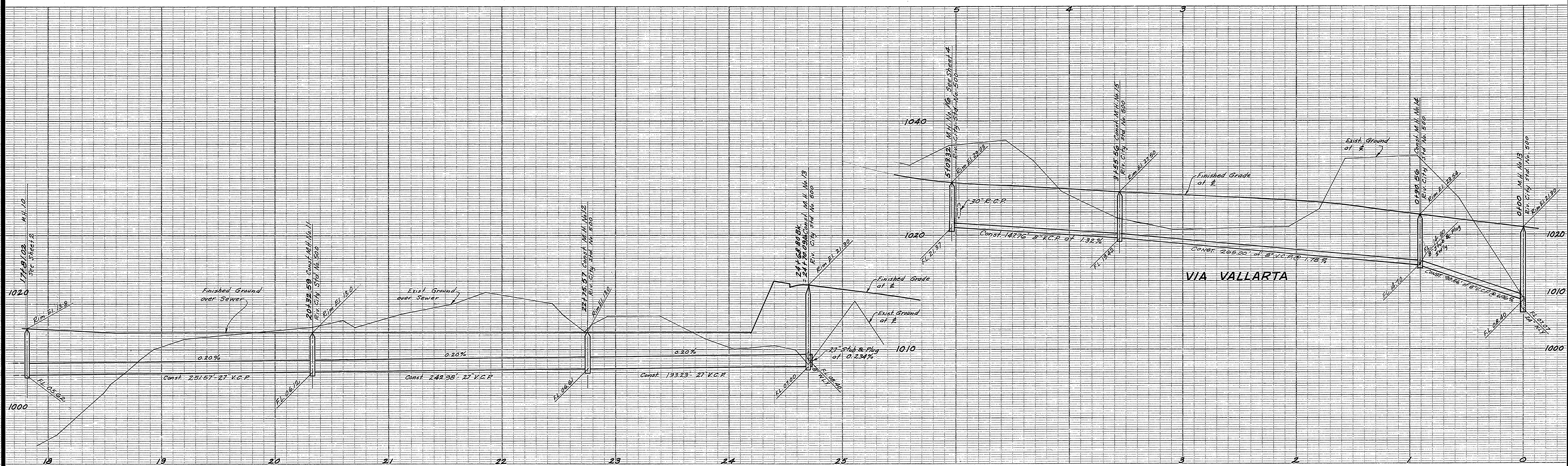
REVISIONS	
MARK	DATE

DESIGNED BY	CHECKED BY <i>B. G. W.</i>	APPROVED BY <i>J. Davidson</i>
DRAWN BY		Director of Public Works
RECOMMENDED BY <i>A. P. Theal</i>	ASSISTANT CITY ENGINEER	DATE 3-12-65

CITY OF RIVERSIDE, CALIFORNIA DEPARTMENT OF PUBLIC WORKS	
Sewer PLAN & PROFILE	
TRACT 2880	
TRUNK LINE	
Sta. 9+11.20 to 17+81.02	
HORIZ. SCALE 1" = 40'	VERT. SCALE 1" = 8'
NO. 5-521	SHEET 2 OF 12



Bench Mark: Top 4" I.P. filled with conc. at S.W. Cor. Sec. 31 Elev. 1138.41

FB. 853-23, 877-63

**J. F. DAVIDSON-CIVIL ENGINEER**  
R.E. NO. 862  
RIVERSIDE, CALIFORNIA  
APPROVED BY *George E. McCarty* DATE 5/15/64

**CITY OF RIVERSIDE, CALIFORNIA**  
DEPARTMENT OF PUBLIC WORKS

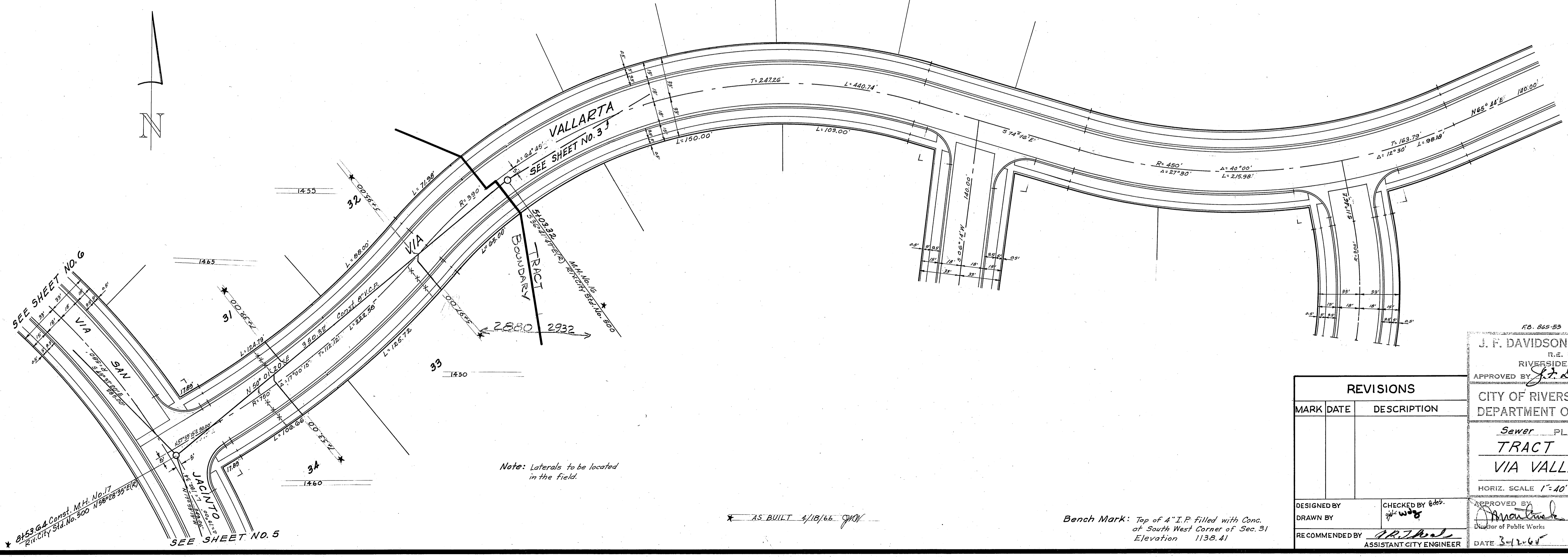
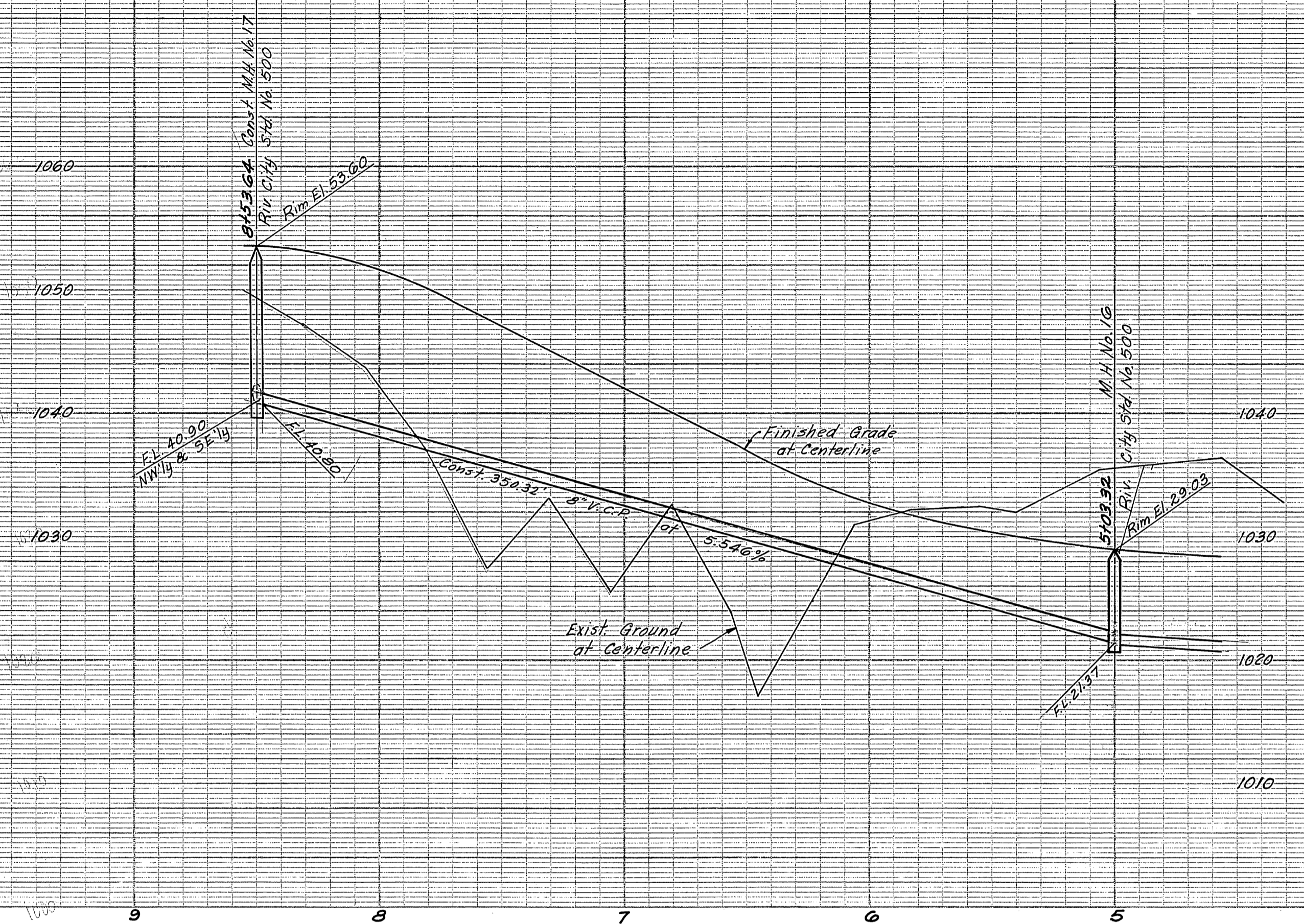
REVISIONS	
MARK	DESCRIPTION

**SEWER PLAN & PROFILE**  
**TRACT 2880**  
**VIA VALLARTA AND**  
**R/W N'LY.**  
HORIZ. SCALE 1"=40' VERT. SCALE 1"=8'

DE: *William D. Davidson*  
DRAWN BY: *W.D. Davidson*  
CHECKED BY: *G.P.*

APPROVED BY: *W.D. Davidson*  
DIRECTOR OF PUBLIC WORKS

DATE 3-12-65 SHEET 3 12



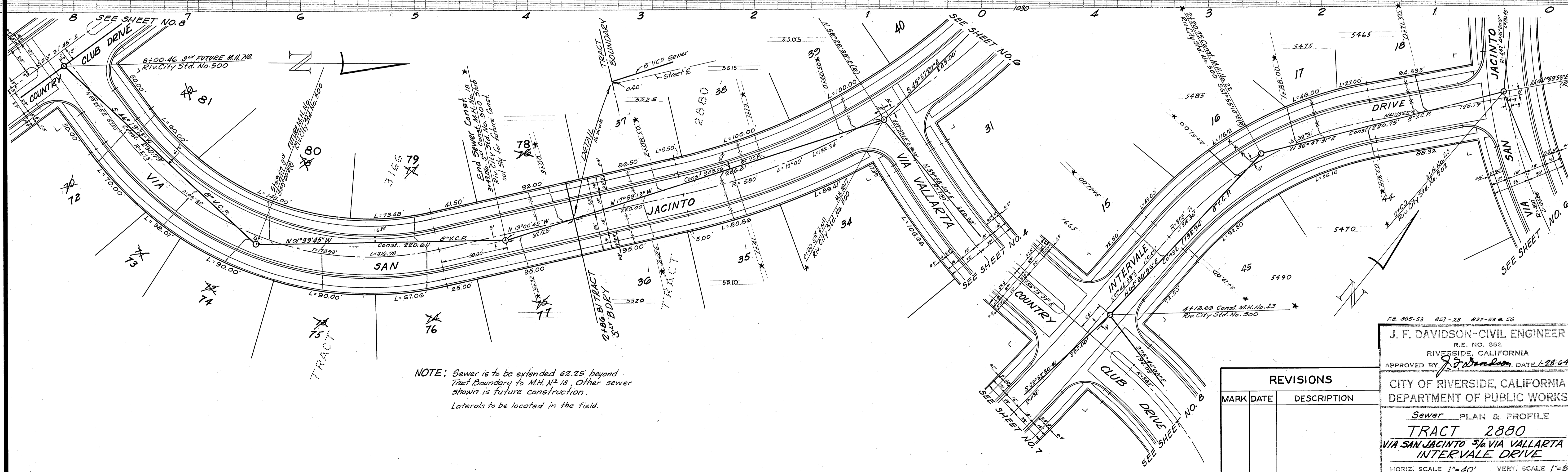
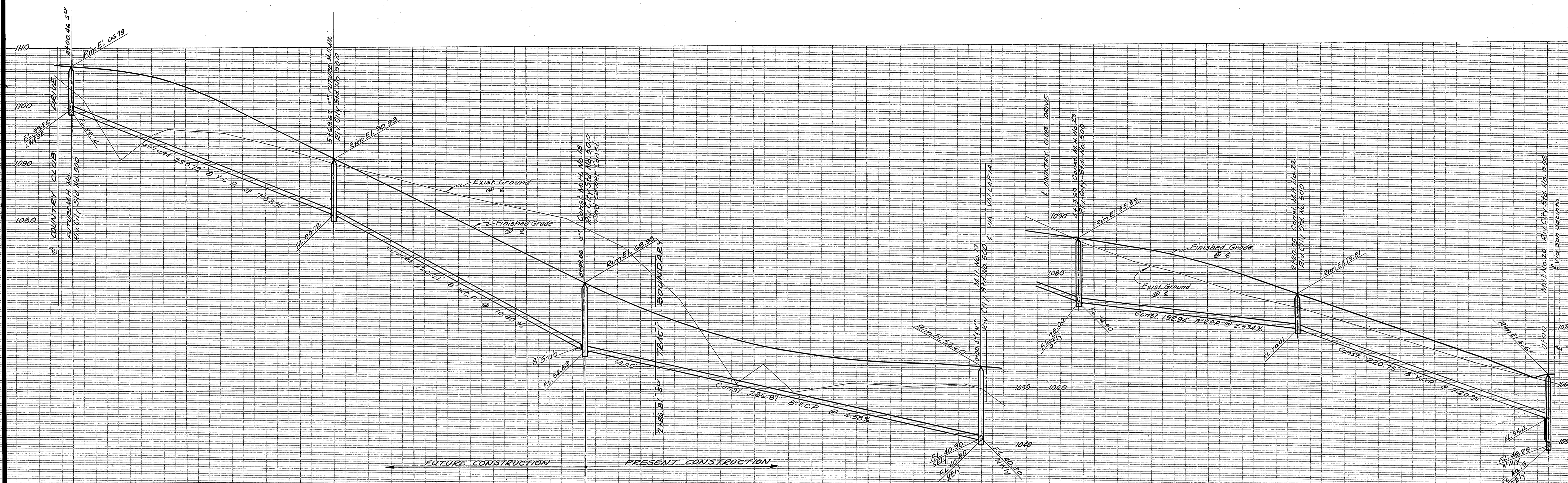
Note: Laterals to be located in the field.

AS BUILT 4/18/66

Bench Mark: Top of 4" I.P. Filled with Conc. of South West Corner of Sec. 31 Elevation 1138.41

REVISIONS	
MARK	DESCRIPTION

J. F. DAVIDSON-CIVIL ENGINEER  
 R.E. NO. 852  
 RIVERSIDE, CALIFORNIA  
 APPROVED BY *J.F. Davidson* DATE 1-28-64  
 CITY OF RIVERSIDE, CALIFORNIA  
 DEPARTMENT OF PUBLIC WORKS  
 Sewer PLAN & PROFILE  
 TRACT 2880  
 VIA VALLARTA  
 HORIZ. SCALE 1"=40' VERT. SCALE 1"=8'  
 DESIGNED BY  
 DRAWN BY  
 RECOMMENDED BY *A.P. [Signature]* ASSISTANT CITY ENGINEER  
 CHECKED BY *[Signature]*  
 APPROVED BY *[Signature]* NO. 5-521  
 DATE 3-12-65 SHEET 4 OF 12



NOTE: Sewer is to be extended 62.25' beyond Tract Boundary to M.H. No. 18. Other sewer shown is future construction.  
Laterals to be located in the field.

\* AS BUILT 7-14-66 general

Bench Mark: Top of 4" I.P. filled with Conc. at South West Corner of Sec. 31 Elevation 1138.41

REVISIONS		
MARK	DATE	DESCRIPTION

FR 065-53 053-23 037-53 & 56

**J. F. DAVIDSON-CIVIL ENGINEER**  
R.E. NO. 962  
RIVERSIDE, CALIFORNIA

APPROVED BY: *[Signature]* DATE 1-28-64

**CITY OF RIVERSIDE, CALIFORNIA**  
DEPARTMENT OF PUBLIC WORKS

Sewer PLAN & PROFILE  
**TRACT 2880**  
VIA SAN JACINTO 5/8 VIA VALLARTA  
INTERVALE DRIVE

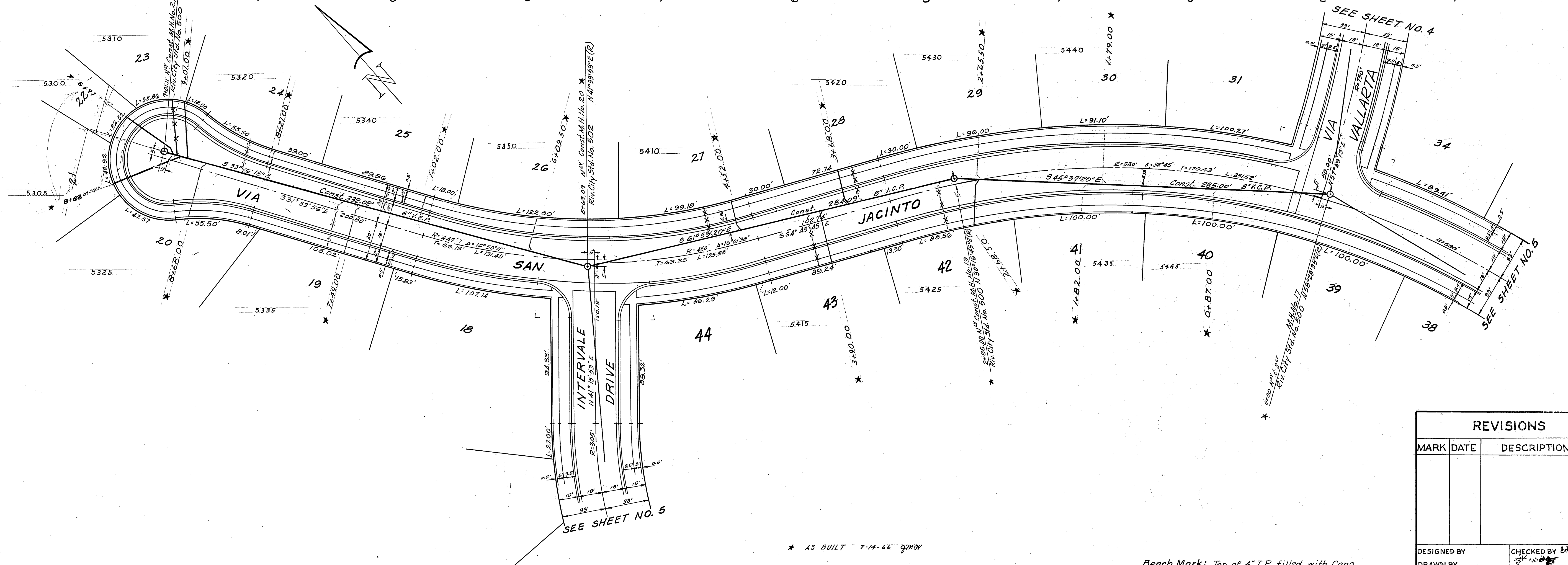
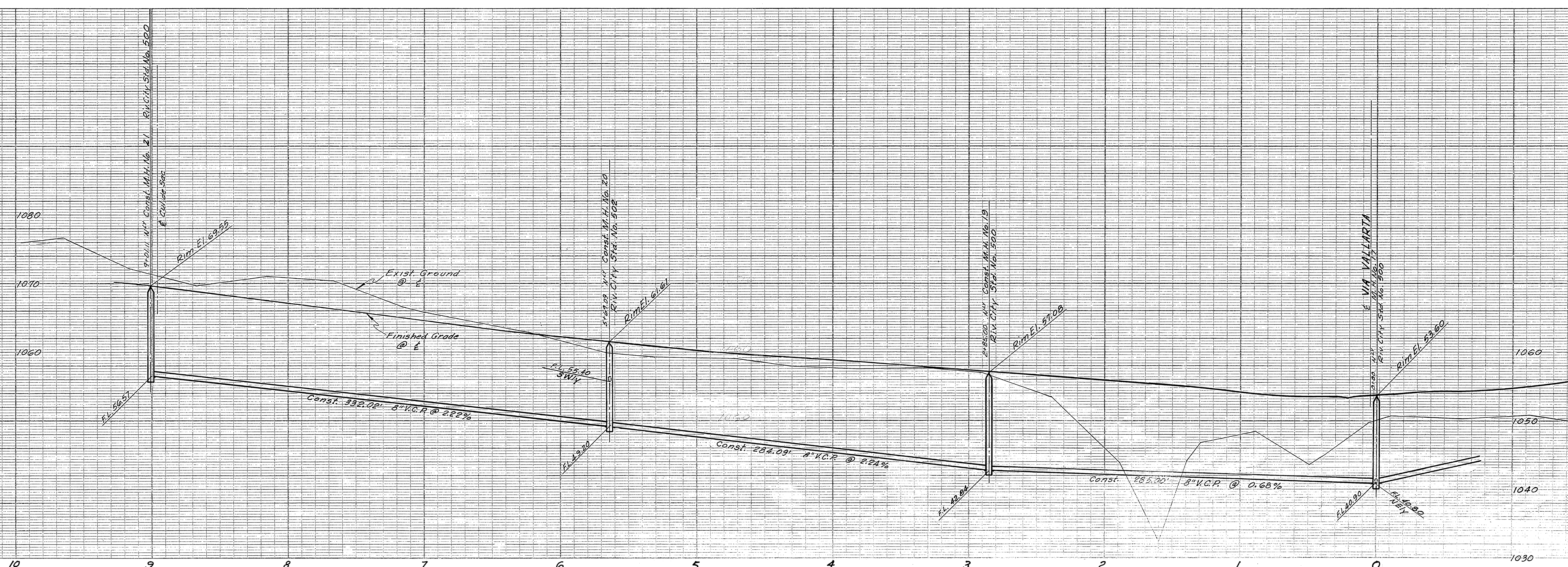
HORIZ. SCALE 1"=40' VERT. SCALE 1"=8'

DESIGNED BY: *[Signature]* CHECKED BY: B.S.  
DRAWN BY: *[Signature]*

RECOMMENDED BY: *[Signature]* ASSISTANT CITY ENGINEER

APPROVED BY: *[Signature]* NO. 5-521  
Director of Public Works

DATE 3-1-65 SHEET 5 of 12



\* AS BUILT 7-14-66 921108

Bench Mark: Top of 4" I.P. filled with Conc. of South West Corner of Sec. 31 Elevation 1138.41

REVISIONS		
MARK	DATE	DESCRIPTION

FB 865-53 853-23 837-53 & 56

**J. F. DAVIDSON-CIVIL ENGINEER**  
 R.E. NO. 823  
 RIVERSIDE, CALIFORNIA

APPROVED BY *J. Davidson* DATE 1-28-64

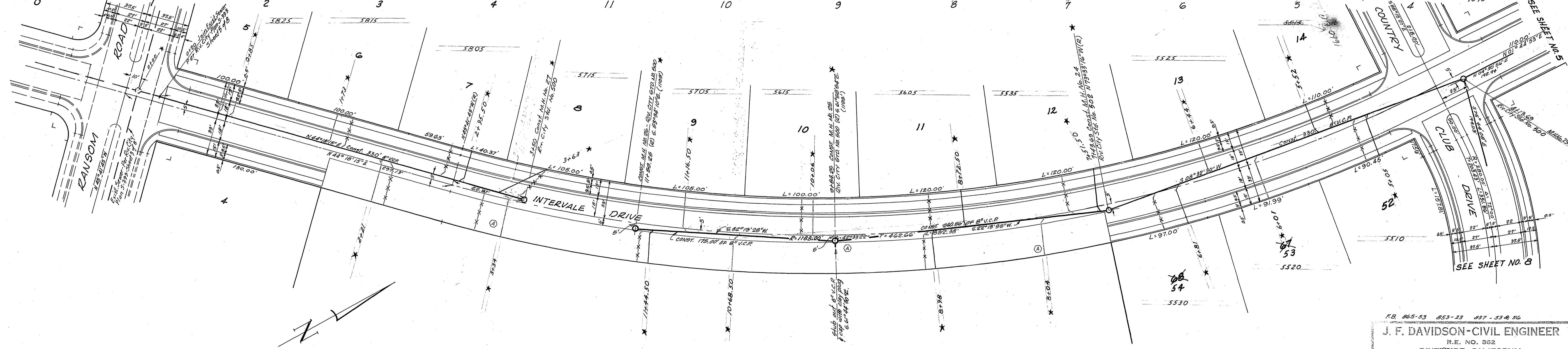
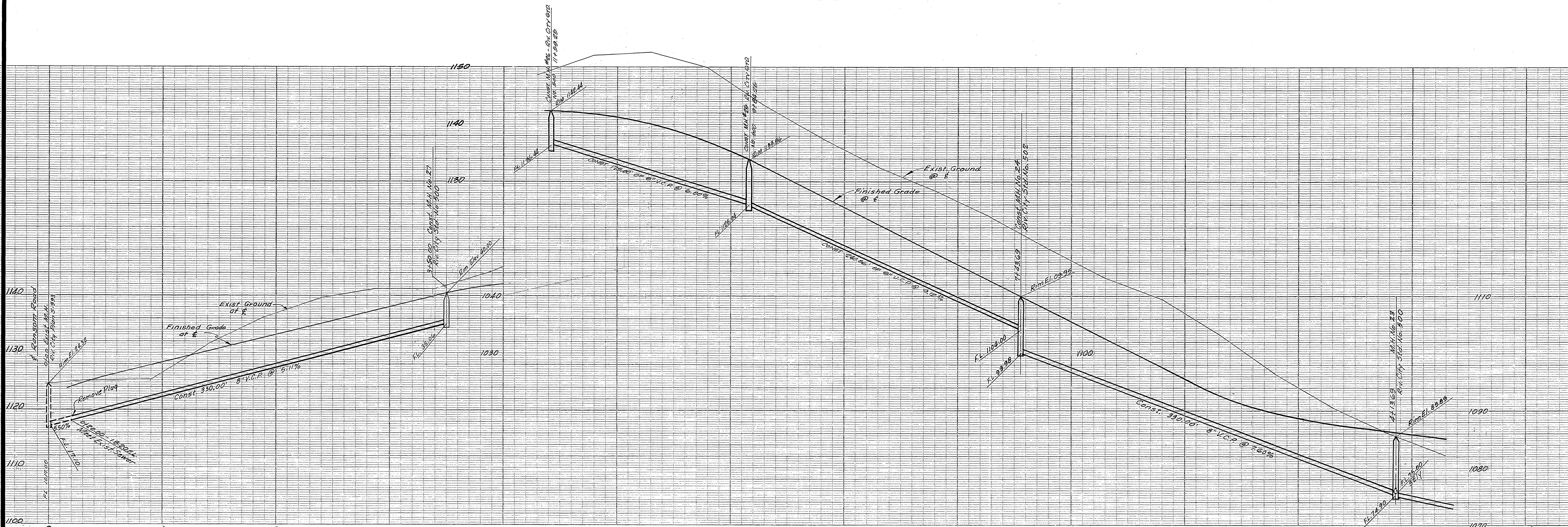
CITY OF RIVERSIDE, CALIFORNIA  
 DEPARTMENT OF PUBLIC WORKS

Sewer PLAN & PROFILE  
**TRACT 2880**  
 VIA SAN JACINTO N/6. VIA VALLARTA

HORIZ. SCALE 1"=40' VERT. SCALE 1"=8'

DESIGNED BY  
 DRAWN BY  
 RECOMMENDED BY *J. Davidson* ASSISTANT CITY ENGINEER

CHECKED BY *J. Davidson*  
 APPROVED BY *J. Davidson* NO. **S-521**  
 DATE 3-12-64 SHEET **6** OF **12**



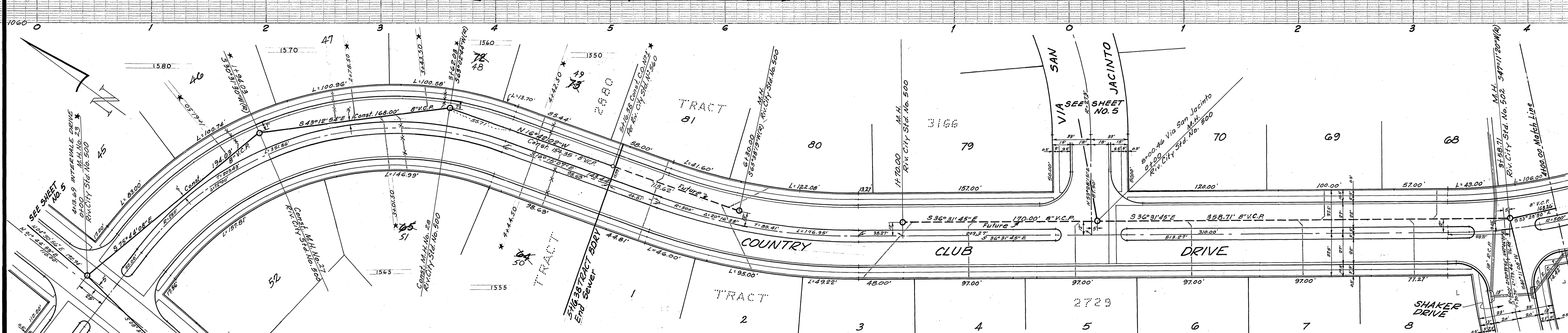
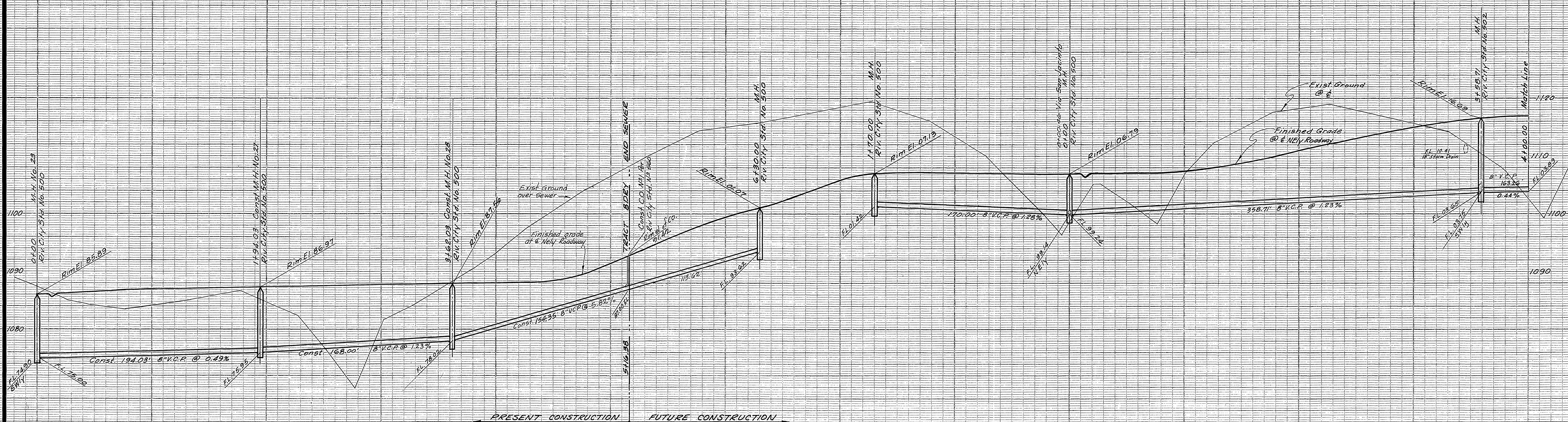
Note: Laterals to be located in the field.

\* AS BUILT 4-14-66 gmm

Bench Mark: Top of 4" I.P. filled with Conc. of South West Corner of Sec. 31 Elevation 1138.41

REVISIONS		
MARK	DATE	DESCRIPTION
①	4-6-66	Revise sewer location from Station 7+49.50 to 11+93.25 due to existing laterals, RM. Approved: <i>Michael</i>

FB 865-53 853-23 887-53 & 56  
**J. F. DAVIDSON-CIVIL ENGINEER**  
 R.E. NO. 362  
 RIVERSIDE, CALIFORNIA  
 APPROVED BY: *J.F. Davidson* DATE 1-28-66  
**CITY OF RIVERSIDE, CALIFORNIA**  
**DEPARTMENT OF PUBLIC WORKS**  
 Sewer PLAN & PROFILE  
**TRACT 2880**  
**INTERVALE DRIVE**  
 N<sup>1</sup>/<sub>2</sub> E<sup>1</sup>/<sub>4</sub> OF RANSOM ROAD, N<sup>1</sup>/<sub>2</sub> W<sup>1</sup>/<sub>4</sub> OF COUNTRY CLUB DRIVE  
 HORIZ. SCALE 1"=40' VERT. SCALE 1"=8'  
 DESIGNED BY: \_\_\_\_\_ CHECKED BY: *gmm*  
 DRAWN BY: \_\_\_\_\_ APPROVED BY: *J.F. Davidson* NO. **S-521**  
 RECOMMENDED BY: *Michael* ASSISTANT CITY ENGINEER DIRECTOR OF PUBLIC WORKS  
 DATE 3-12-65 SHEET 7 12



NOTE: End sewer const. of sta. 5+16.38  
Other sewer shown is future const.  
Laterals to be located in the field.

\*AS BUILT 7-14-66 ghw

Bench Mark: Top of 4" I.P. filled with Cono.  
at South West Corner of Sec. 31  
Elevation 1138.41

REVISIONS	
MARK	DATE DESCRIPTION

DESIGNED BY  
DRAWN BY  
RECOMMENDED BY

CHECKED BY B.G.S.  
#100

APPROVED BY [Signature]  
DATE 1-28-64

J. F. DAVIDSON-CIVIL ENGINEER  
R.E. NO. 562  
RIVERSIDE, CALIFORNIA

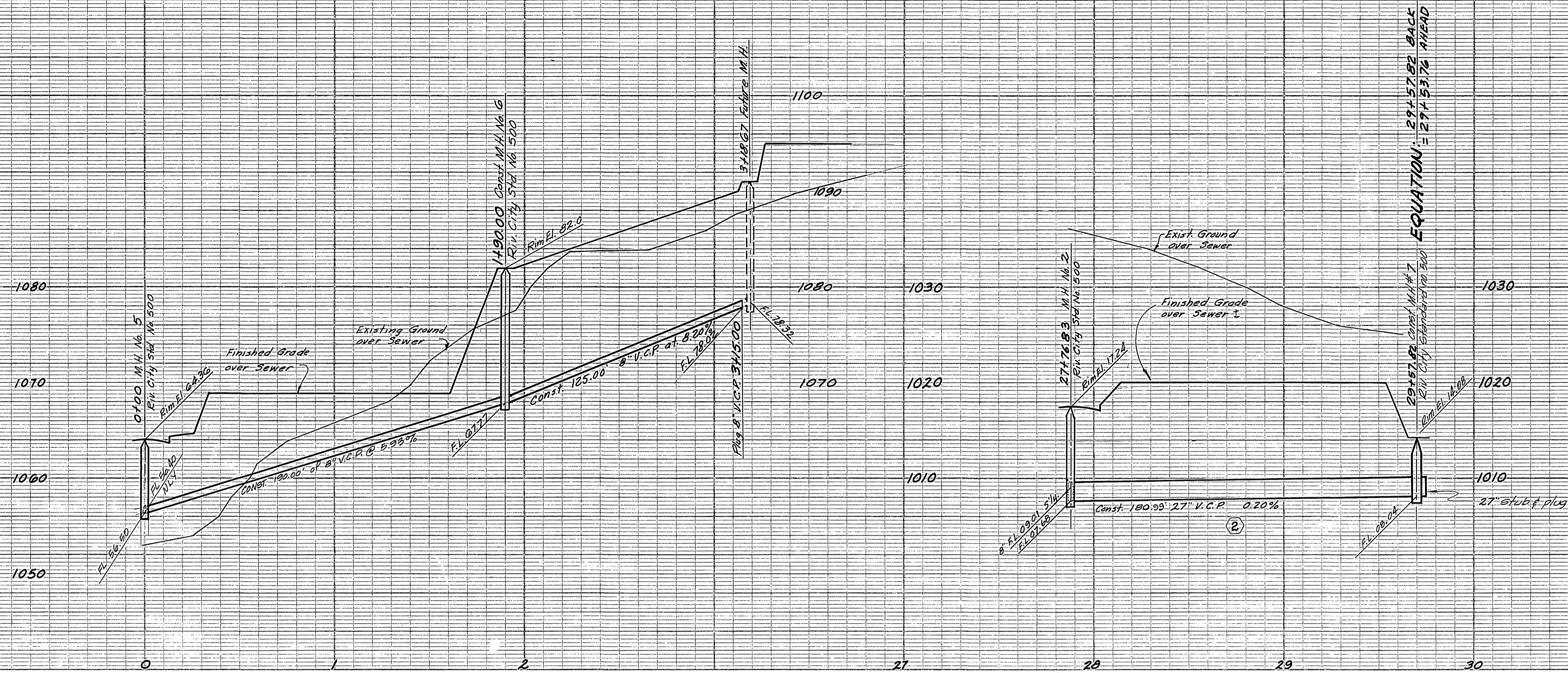
CITY OF RIVERSIDE, CALIFORNIA  
DEPARTMENT OF PUBLIC WORKS

Sewer PLAN & PROFILE  
TRACT 2880  
COUNTRY CLUB DRIVE  
INTERVALE DRIVE TO SHAKER DRIVE

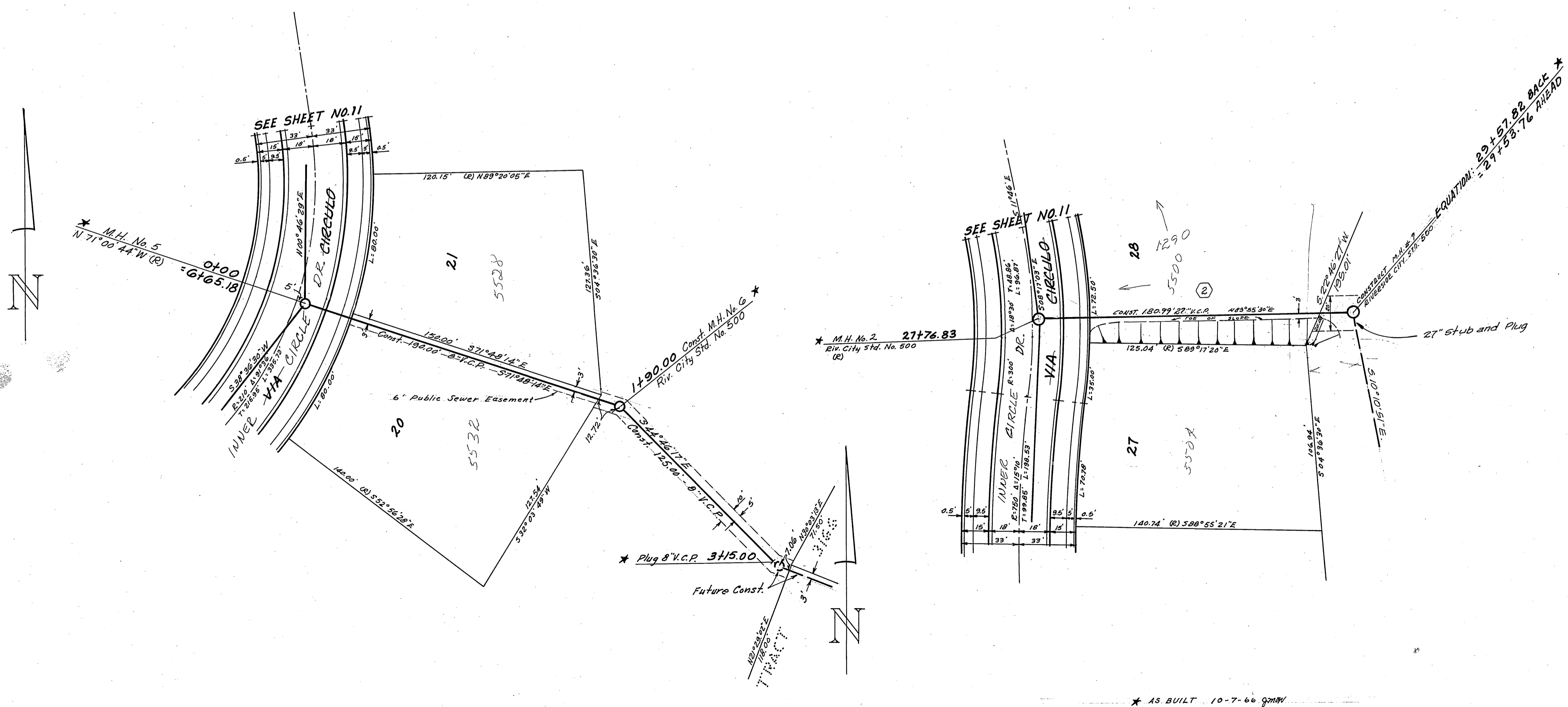
HORIZ. SCALE 1"=40' VERT. SCALE 1"=8'

NO. S-521  
DATE 3-11-64 SHEET 8 OF 12





- GENERAL NOTES**
- All wyes and laterals to be located in the field. All man holes to be Riverside City Standard No. 500, unless otherwise noted on plan. Maximum vertical spacing of steps in all man holes shall be 12".
  - All laterals to be "A" and extended to the property line.
  - All construction shall be in accordance with Standards and Specifications No. 461 of the City of Riverside Department of Public Works. Pipes shall be bedded per case II, Standard Drawing No. 452, unless otherwise specified on plan.
  - It shall be the responsibility of the Contractor to clear the Right of Way in accordance with the provisions of law as it affects each utility including irrigation lines and appurtenances, and at no extra cost to the City of Riverside.
  - Joints in vitrified clay pipe sewers shall conform to ASTM Standard C-425-60T, or the latest revision thereof.
  - All stubs and laterals to be constructed in accordance with Standard Drawing No. 562. Stubs shall be plugged and capped.
  - Sheets 1 through 8 were submitted as TRACT 2880.



Bench Mark: Top 4" I.P. filled with conc. at S.W. Cor. Sec. 31 Eler. 1138.41

**J. F. DAVIDSON - CIVIL ENGINEER**  
R.E. NO. 862  
RIVERSIDE, CALIFORNIA

APPROVED BY: *George M. Canty* DATE: 5/15/64

**CITY OF RIVERSIDE, CALIFORNIA**  
DEPARTMENT OF PUBLIC WORKS

**SEWER PLAN & PROFILE**  
TRACT 2932  
SEWER R/W'S E/O VIA CIRCULO  
& S/O VIA VALLARTA CIRCLE DR.

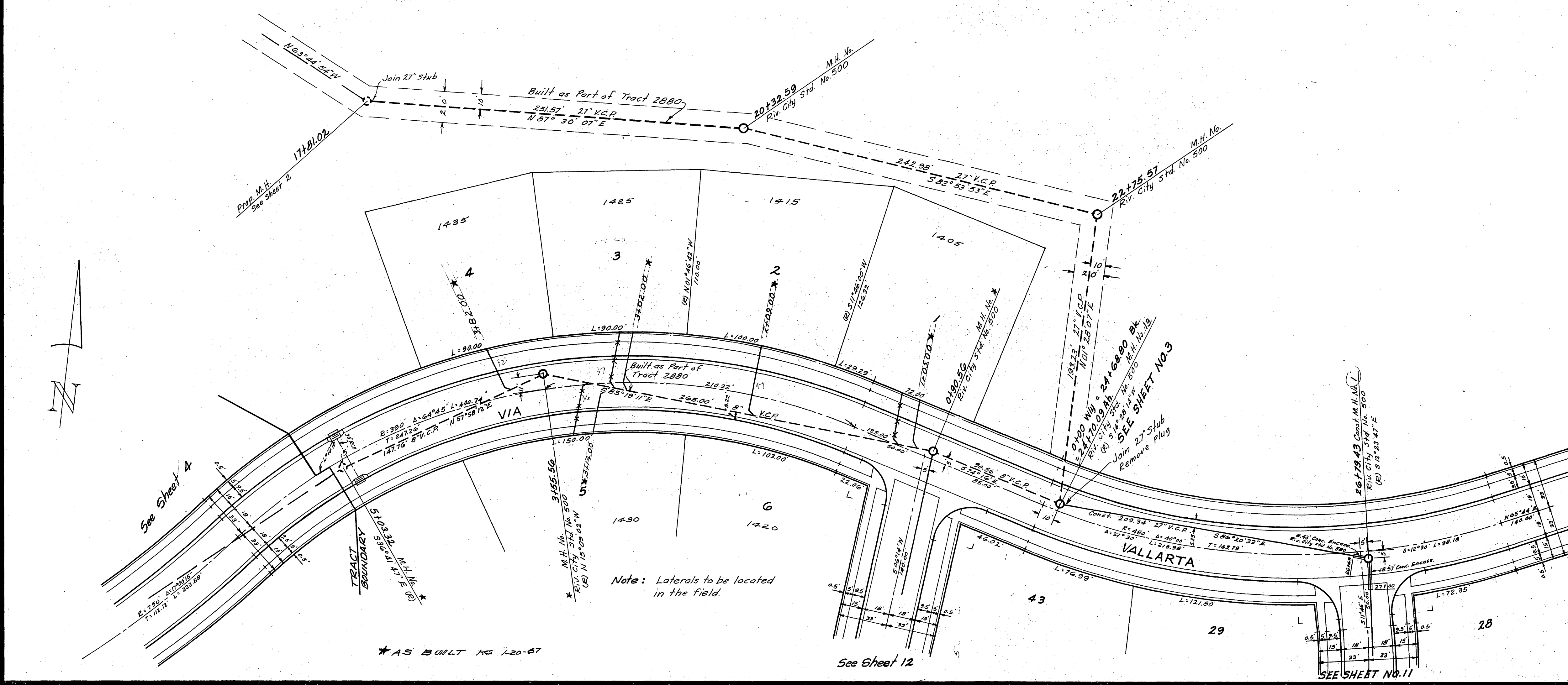
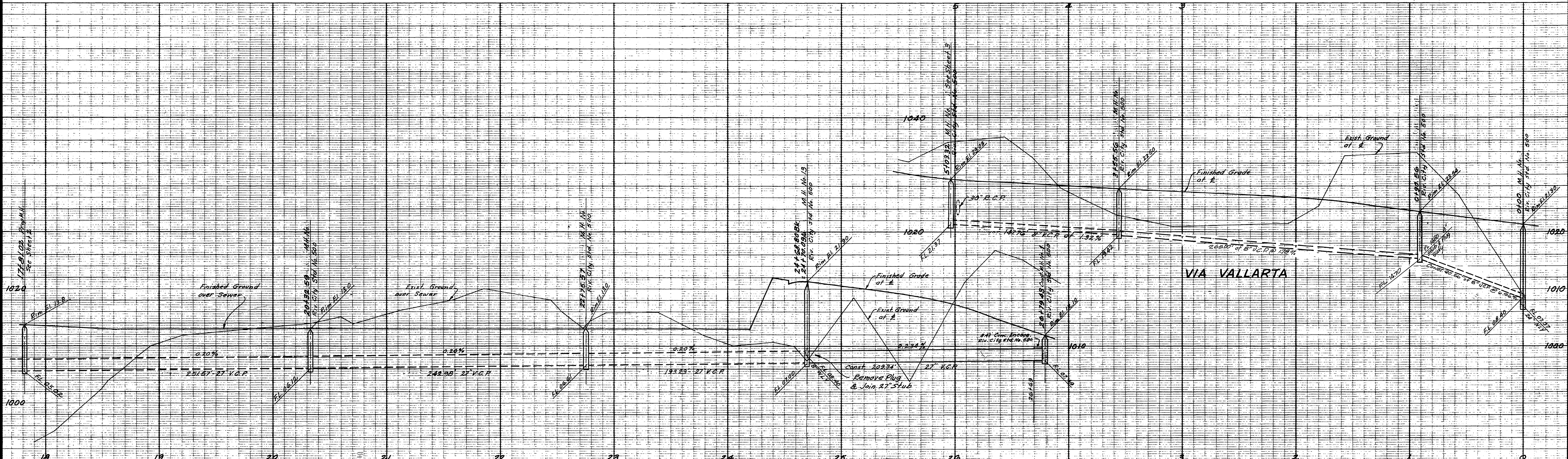
HORIZ. SCALE 1"=40' VERT. SCALE 1"=8'

MARK	DATE	DESCRIPTION
(2)	4-7-65	REVISION TO PLAN BETWEEN LOTS 20 & 21. APPROVED BY: <i>W. J. ...</i>

DESIGNED BY: *W. J. ...* CHECKED BY: *W. J. ...*  
DRAWN BY: *W. J. ...*  
RECOMMENDED BY: *W. J. ...* ASSISTANT CITY ENGINEER

APPROVED BY: *George M. Canty* Director of Public Works  
DATE: 3-12-65

NO. 5-521  
SHEET 9 OF 12



FB 853-23, 877-63

**J. F. DAVIDSON-CIVIL ENGINEER**  
R.E. NO. 862  
RIVERSIDE, CALIFORNIA

APPROVED BY *George E. McCarty* DATE 5/15/64  
DIRECTOR OF PUBLIC WORKS

**CITY OF RIVERSIDE, CALIFORNIA**  
**DEPARTMENT OF PUBLIC WORKS**

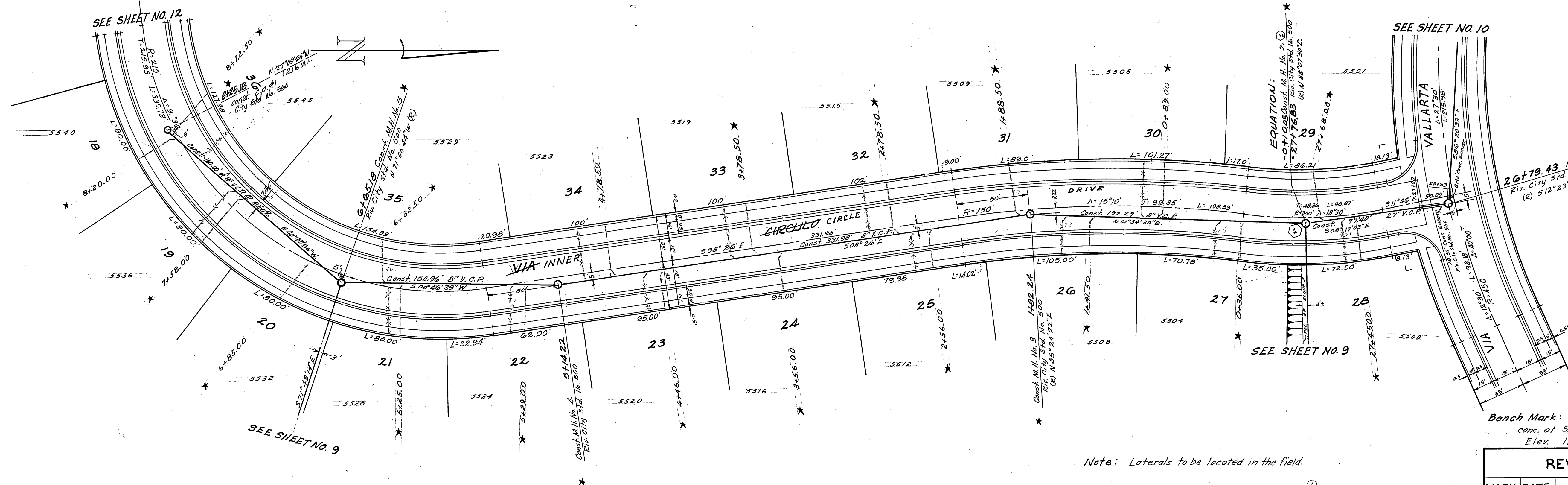
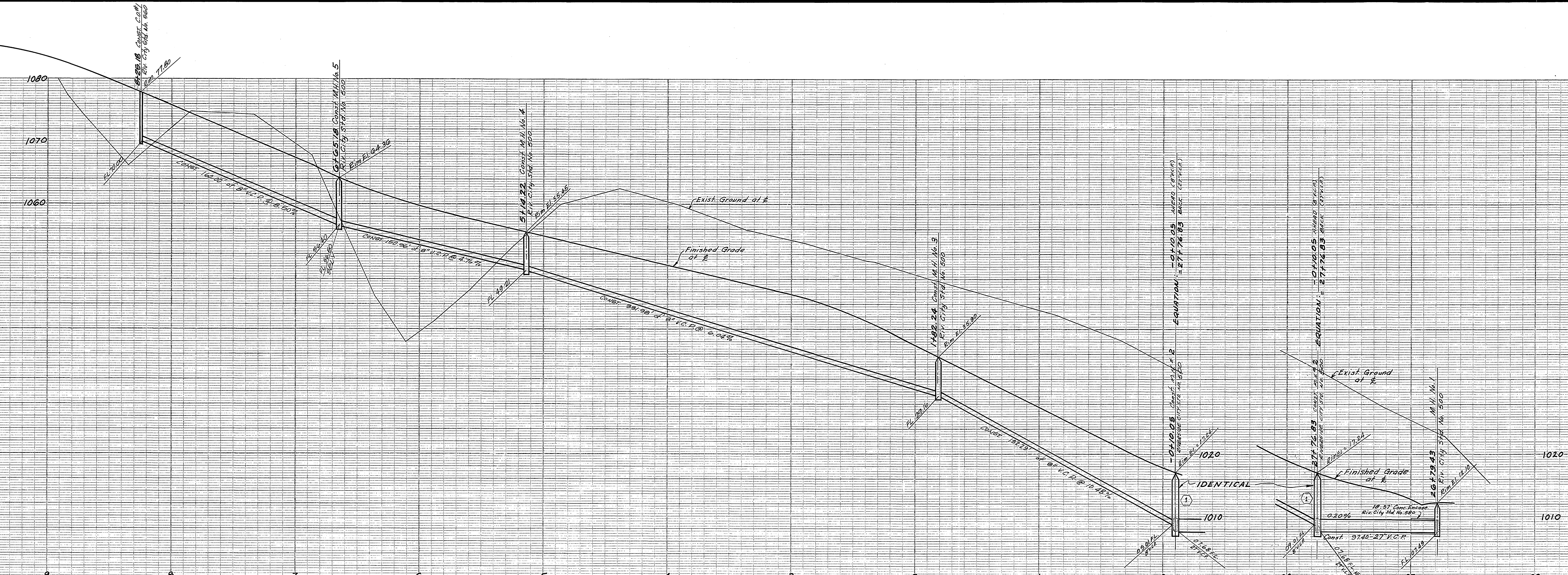
SEWER PLAN & PROFILE  
**TRACT 2932**  
VIA VALLARTA AND  
R/W N'LY

HORIZ. SCALE 1"=40'    VERT. SCALE 1"=8'

REVISIONS		
MARK	DATE	DESCRIPTION

DESIGNED BY	SUBMITTED BY <i>William D. Davidson</i>	APPROVED BY <i>George E. McCarty</i>	NO. 5-521
DRAWN BY	PARK DEPT. TRAFFIC DIV.	Director of Public Works	DATE 3-12-64
CHECKED BY G.S.	RECOMMENDED BY		SHEET 10 OF 12

2735



FB 853-33  
**DAVIDSON-CIVIL ENGINEER**  
 R.E. No. 862  
 RIVERSIDE, CALIFORNIA  
 APPROVED BY *George E. McLean* DATE 5/15/64

Bench Mark: Top 4" I.P. Filled with conc. at S.W. Cor. Sec. 31  
 Elev. 1138.41

Note: Laterals to be located in the field.

REVISIONS		
MARK	DATE	DESCRIPTION
①	4-7-65	RELOCATE M.H. #2 FROM 20+00 TO 20+00 APPROVED BY: <i>A. Davidson</i>

**CITY OF RIVERSIDE, CALIFORNIA**  
**DEPARTMENT OF PUBLIC WORKS**

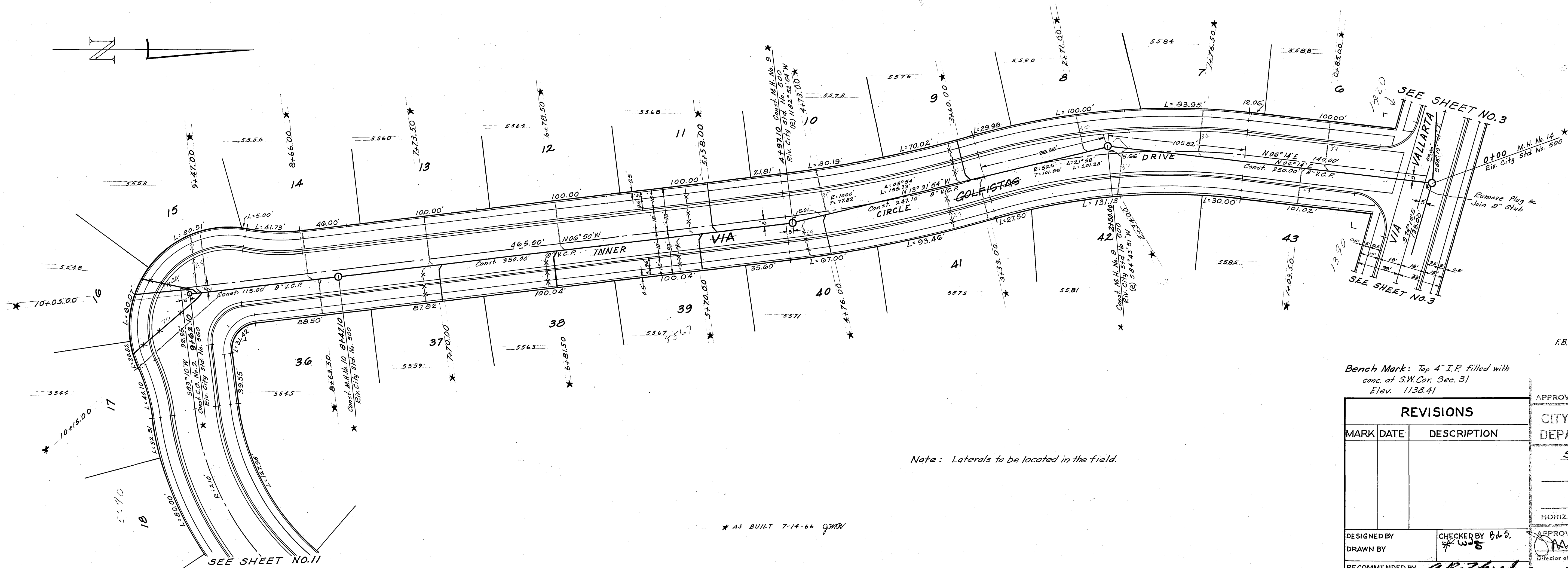
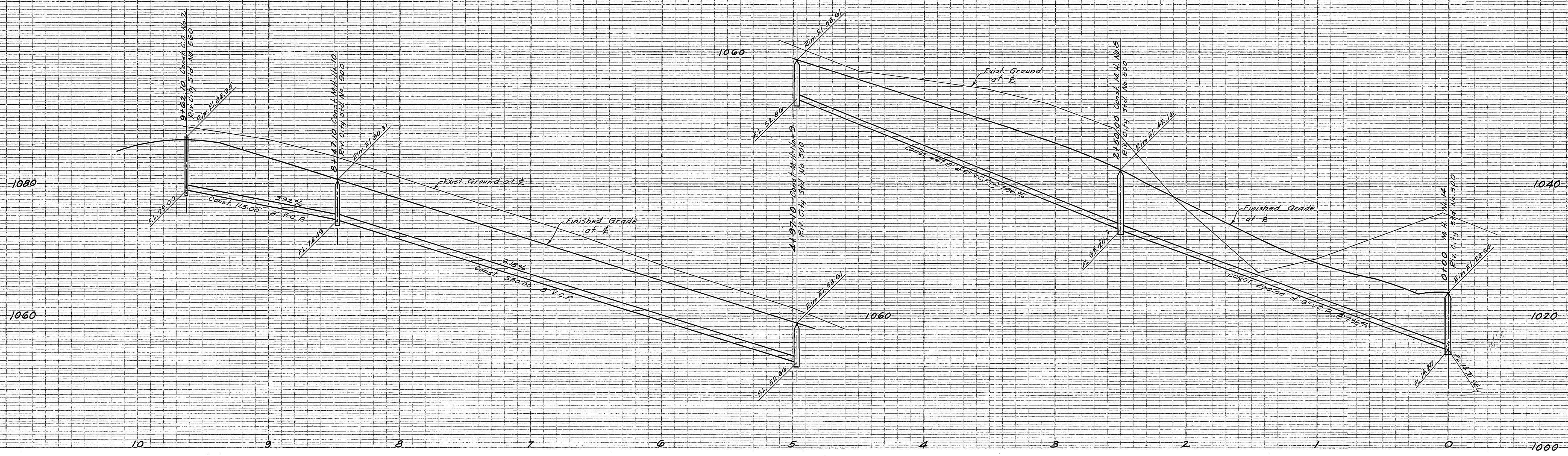
**SEWER PLAN & PROFILE**  
**TRACT 2932**  
**VIA CHURCO INNER CIRCLE DRIVE**  
**S/O VIA VALLARTA**

HORIZ. SCALE 1"=40'    VERT. SCALE 1"=8'

DESIGNED BY \_\_\_\_\_ CHECKED BY *D.S.G.*  
 DRAWN BY \_\_\_\_\_  
 RECOMMENDED BY *A. Davidson* ASSISTANT CITY ENGINEER

APPROVED BY *George E. McLean* Director of Public Works  
 NO. **5-521**  
 DATE **3-12-65** SHEET **11** OF **12**

\* AS BUILT 7-18-66 gmn



Note: Laterals to be located in the field.

\* AS BUILT 7-14-66 gmer

Bench Mark: Top 4" I.P. filled with conc. at S.W. Cor. Sec. 31  
Elev. 1138.41

REVISIONS	
MARK	DESCRIPTION

FB 853-51  
JAVIDSON-CIVIL ENGINEER  
R.E. NO. 862  
RIVERSIDE, CALIFORNIA

APPROVED BY *George E. McCarty* DATE 5/15/67

CITY OF RIVERSIDE, CALIFORNIA  
DEPARTMENT OF PUBLIC WORKS

SEWER PLAN & PROFILE  
TRACT 2932  
VIA GOLFISTAS INNER CIRCLE DRIVE  
s/o VIA VALLARTA  
HORIZ. SCALE 1"=40' VERT. SCALE 1"=8'

DESIGNED BY  
DRAWN BY  
RECOMMENDED BY *W. J. ...*  
ASSISTANT CITY ENGINEER

CHECKED BY *W. J. ...*  
APPROVED BY *George E. McCarty*  
DIRECTOR OF PUBLIC WORKS  
DATE 3-12-67 NO. 5-521