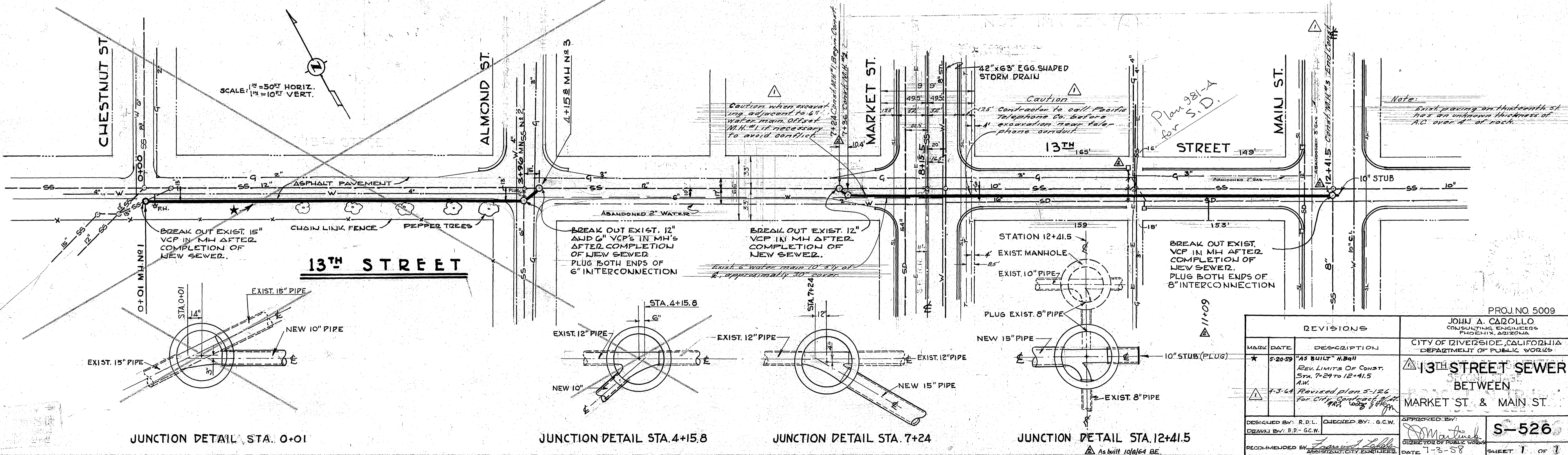


B.M. 833.939 BRASS CAP IN S.E.
 COR. C.B. ON S.W. COR. OF MARKET
 ST. AT 13TH ST.
 F.B. 5-6 46
 VERT.: 1" = 10'
 SCALE HORIZ.: 1" = 50'

BM:
 WEST SIDE OF C.I. RING - EXISTING MH.
 13 FT. LT. STA. 0+28
 ELEV. 806.85

NOT A PART OF THIS CONTRACT



JUNCTION DETAIL STA. 0+01

JUNCTION DETAIL STA. 4+15.8

JUNCTION DETAIL STA. 7+24

JUNCTION DETAIL STA. 12+41.5

REVISIONS			JOHN A. CAROLLO CONSULTING ENGINEER PHOENIX, ARIZONA CITY OF RIVERSIDE, CALIFORNIA DEPARTMENT OF PUBLIC WORKS
MARK	DATE	DESCRIPTION	
*	5-20-59	"AS BUILT" H.B. 11 REV. LIMITS OF CONST. STA. 7+24 TO 12+41.5 A.M.	13TH STREET SEWER BETWEEN MARKET ST. & MAIN ST.
Δ	7-3-64	Revised plan 5-12-64 for City Engineer's Office and City Council's Office	
DESIGNED BY: R.D.L. CHECKED BY: G.C.W. APPROVED BY: <i>[Signature]</i> DRAWN BY: B.D. - G.C.W.			S-526 SHEET 1 OF 1
RECOMMENDED BY: <i>[Signature]</i> ASSISTANT CITY ENGINEER DATE: 7-3-58			

PROJ. NO 5009

4517-3-1076