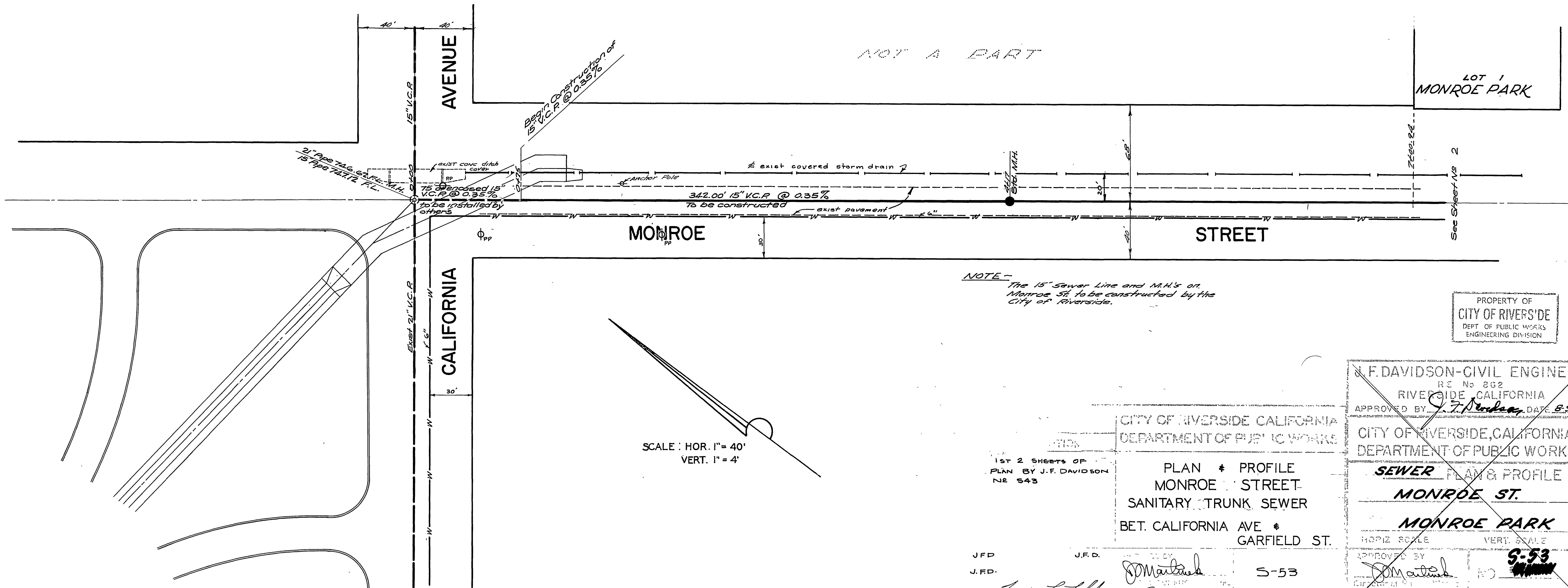
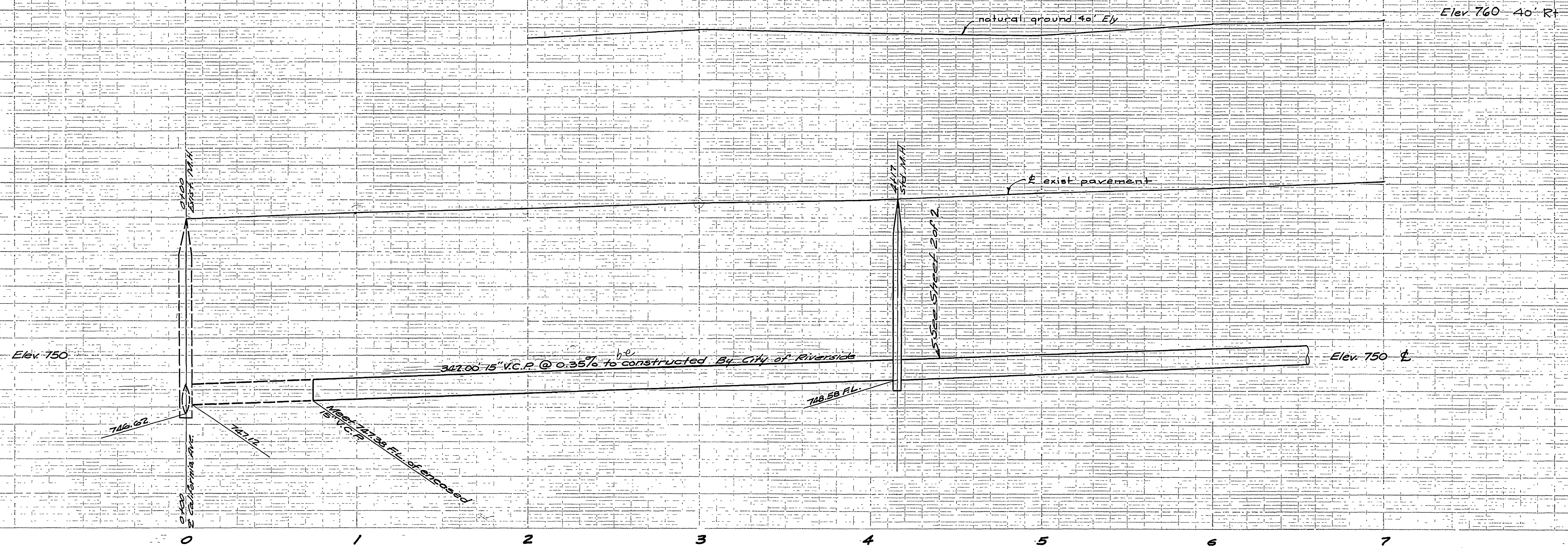


CITY OF RIVERSIDE
DEPT. OF PUBLIC WORKS
ENGINEERING DIVISION

PROPERTY OF
CITY OF RIVERSIDE
DEPT. OF PUBLIC WORKS
ENGINEERING DIVISION



PROPERTY OF
CITY OF RIVERSIDE
DEPT. OF PUBLIC WORKS
ENGINEERING DIVISION

PROPERTY OF
CITY OF RIVERSIDE
DEPT. OF PUBLIC WORKS
ENGINEERING DIVISION

NOTE -
The 15" sewer line and M.H.'s on
Monroe St. to be constructed by the
City of Riverside.

1st 2 SHEETS OF
PLAN BY J.F. DAVIDSON
NO 543

CITY OF RIVERSIDE CALIFORNIA
DEPARTMENT OF PUBLIC WORKS

PLAN & PROFILE
MONROE STREET
SANITARY TRUNK SEWER
BET. CALIFORNIA AVE &
GARFIELD ST.

J.F. DAVIDSON - CIVIL ENGINEER
RE No 282
RIVERSIDE, CALIFORNIA
APPROVED BY: *S. J. Davidson* DATE: 8-9-56

CITY OF RIVERSIDE, CALIFORNIA
DEPARTMENT OF PUBLIC WORKS
SEWER PLAN & PROFILE
MONROE ST.
MONROE PARK

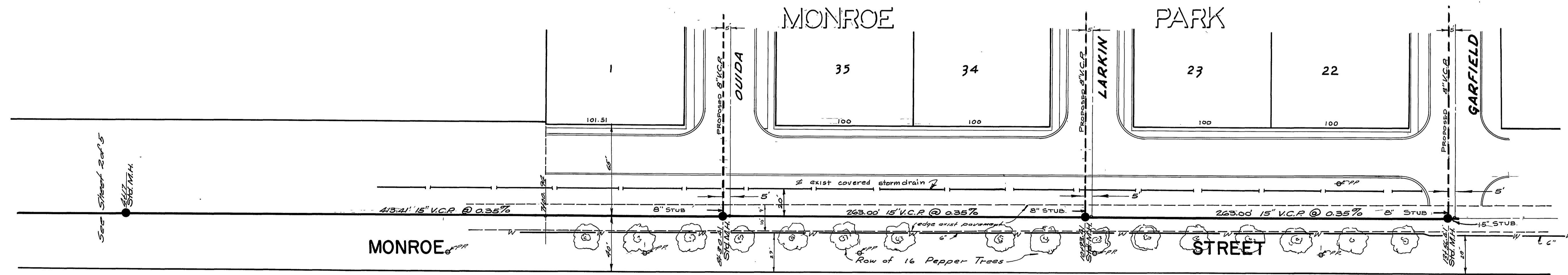
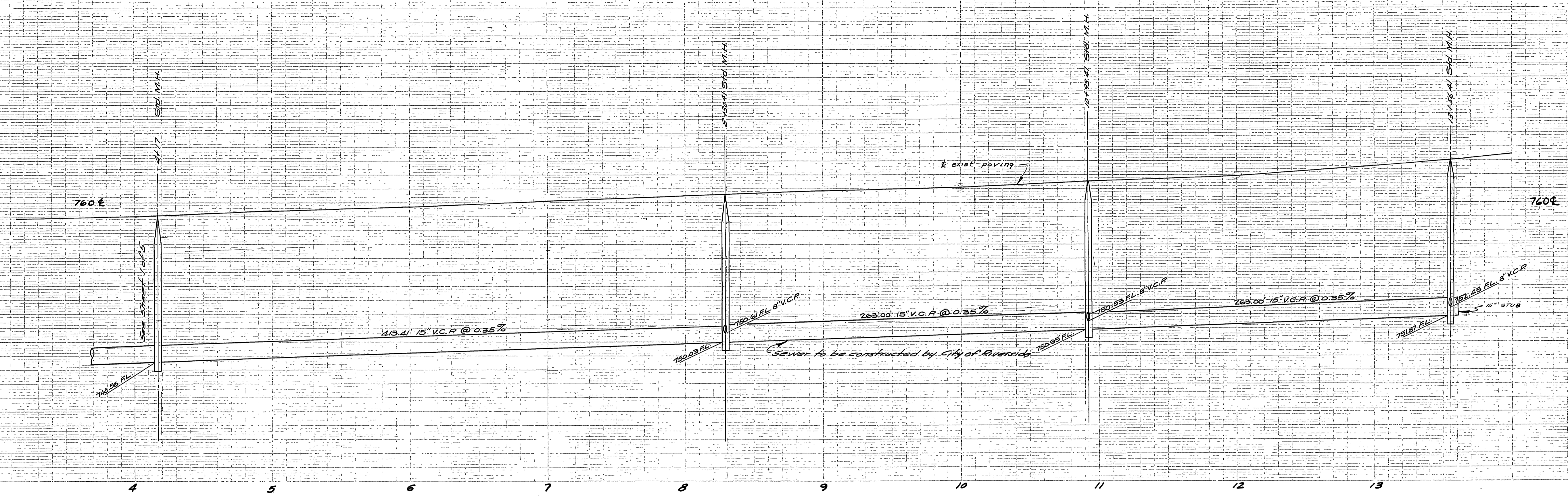
J.F.D.
J.F.D.
Thomas L. Spiller
Sept 5, 1956

J.F.D.
J. Davidson
S-53
1 2

APPROVED BY: *J. Davidson*
DATE: Aug 22, 1956
9-53
1 2

CITY OF RIVERSIDE
DEPT. OF PUBLIC WORKS
ENGINEERING DIVISION

PROPERTY OF
CITY OF RIVERSIDE
DEPT. OF PUBLIC WORKS
ENGINEERING DIVISION



NOTE:
The 15" sewer line and M.H.'s on Monroe St. to be constructed by the City of Riverside.

SCALE: HOR. 1" = 40'
VERT. 1" = 4'

PROPERTY OF
CITY OF RIVERSIDE
DEPT. OF PUBLIC WORKS
ENGINEERING DIVISION

PROPERTY OF
CITY OF RIVERSIDE
DEPT. OF PUBLIC WORKS
ENGINEERING DIVISION

1st 2 SHEETS OF
PLAN BY J.F. DAVIDSON
No 5-43

PLAN & PROFILE
MONROE STREET
SANITARY TRUNK SEWER
BET. CALIFORNIA AVE &
GARFIELD ST.

J.F.D. J.F.D.
J.E.D. J.E.D.
Francis J. Lofgren
Sept 5, 1973

J.F. DAVIDSON-CIVIL ENGINEER
RE No 852
RIVERSIDE, CALIFORNIA
APPROVED BY *J. Davidson* DATE 8-9-56
CITY OF RIVERSIDE, CALIFORNIA
DEPARTMENT OF PUBLIC WORKS
SEWER PLANS & PROFILE
MONROE STREET
MONROE PARK
HORIZ. SCALE 1" = 40' VERT. SCALE 1" = 4'
APPROVED BY *J. Davidson* NO. 5-53
Director of Public Works
DATE Aug 22, 1976 SHEET 2 OF 2