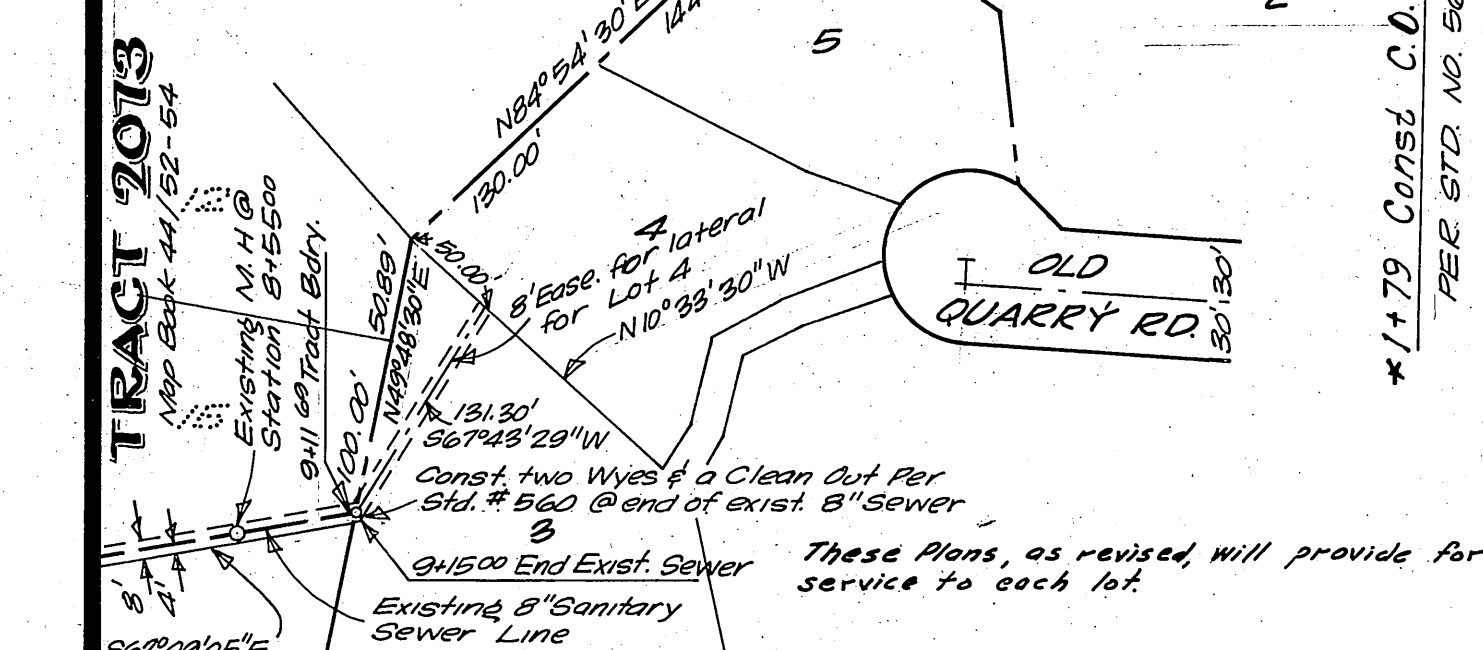
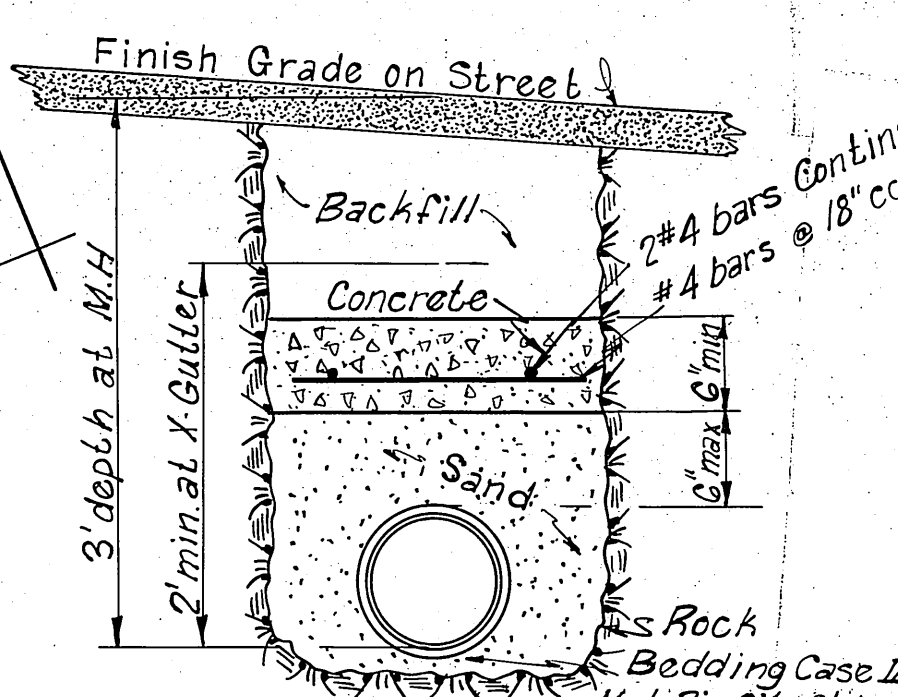
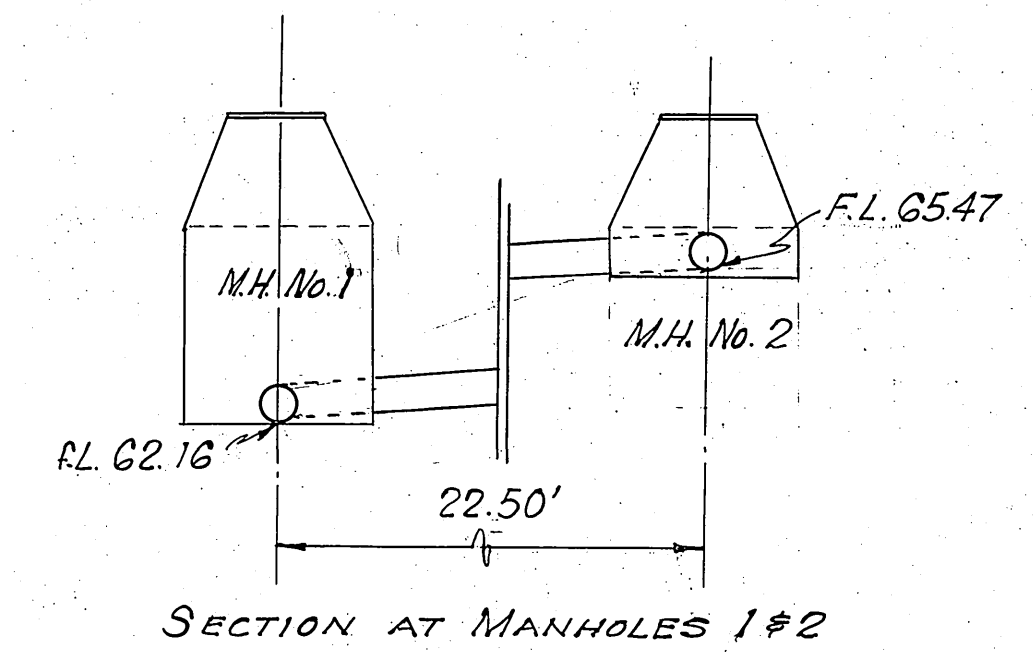
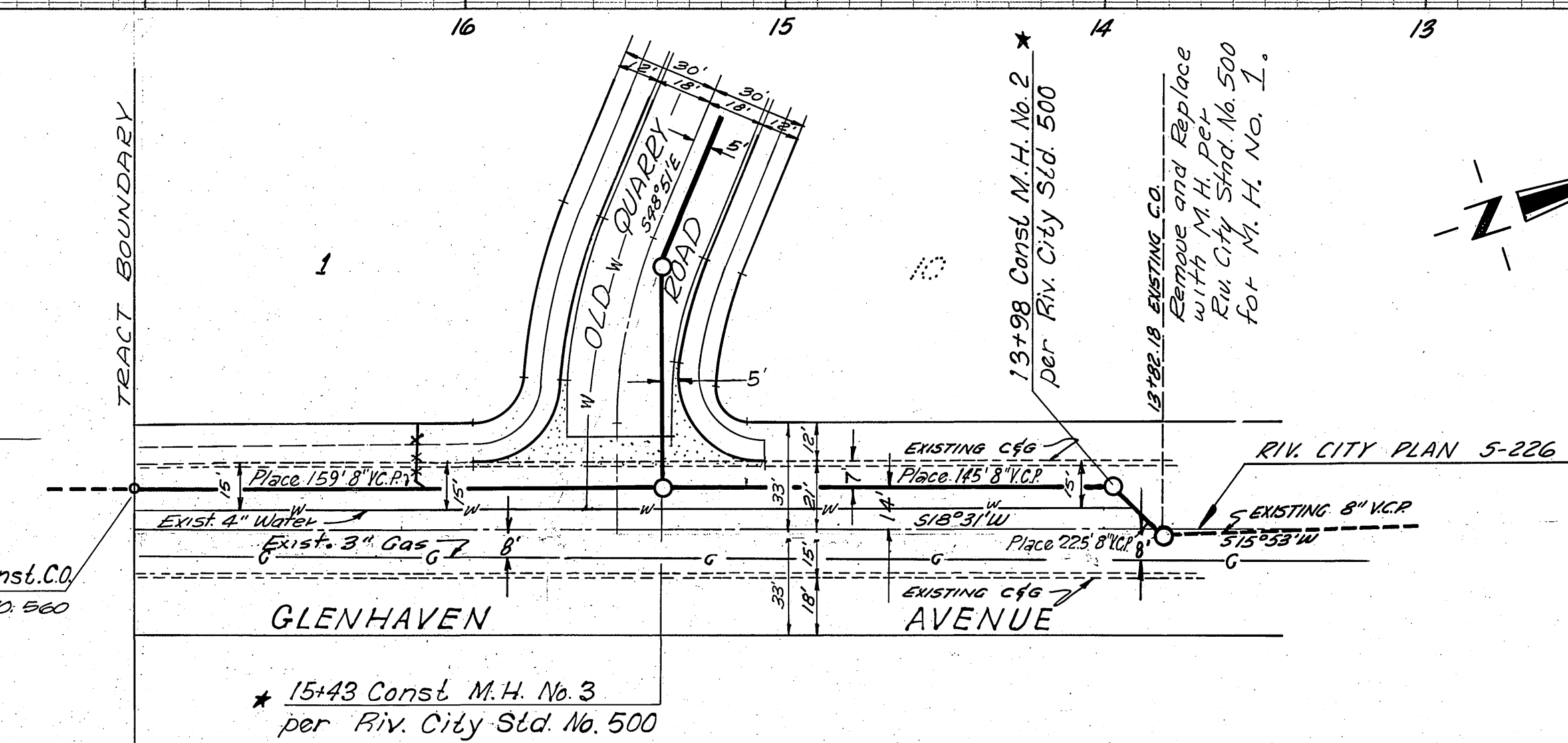


Arrangements have been made for laterals from Lots 3 & 4. To be served from Tract 2073 M.B. 44152-54 At Southwest Corner LOT 15. - Therefore Construct Two Wyes and a Clean Out Per Std. #660 @ end of exist. 8" sewer line @ STATION 9+15. Ev. City Plan 5-347. (SEE DETAIL BELOW)



DETAIL
SCALE: 1"=100'



TYPICAL SECTION
IN ROCK EXCAVATION
SCALE: 1"=10'

GENERAL NOTES

1. All work and materials to be done in the field. All materials to be used shall conform to the specifications of the City of Riverside, California, Department of Public Works, Division II, Standard Specifications 452.
2. All work to be done in accordance with the specifications of the City of Riverside, California, Department of Public Works, Division II, Standard Specifications 452.
3. It shall be the responsibility of the contractor to verify the location of all existing utilities and to mark them in the field. The contractor shall be responsible for the safety of all workers and the public.
4. BENCH MARK: ER Spike in Palm Tree at S.W. Corner of Cornwall & Howe Streets. Elev. = 1053.74.
5. Joints in vitrified clay pipe sewers shall conform to ASTM Standard C-425-60T, or the latest revision thereof.

REVISIONS		
MARK	DATE	DESCRIPTION
1	7-64	Revision of Sewer Align. & Grade P.C. W.B. (K) J.M.

DAVIDSON-CIVIL ENGINEER
R.E. NO. 882
RIVERSIDE, CALIFORNIA
APPROVED BY: *J.P. Davidson* DATE: 4-1-64
CITY OF RIVERSIDE, CALIFORNIA
DEPARTMENT OF PUBLIC WORKS
Sewer PLAN & PROFILE
GLENHAVEN AVE. - OLD QUARRY RD.
TRACT 2904
1"=40' HORIZ. SCALE 1"=8' VERT. SCALE
DESIGNED BY: *W.B. (K) J.M.*
CHECKED BY: *W.B. (K) J.M.*
DATE: 6-19-64
NO. 5-541
SHEET 1 OF 1

*As built 10-8-64 BE. 11-8-66 J.M. W.O. #12145