

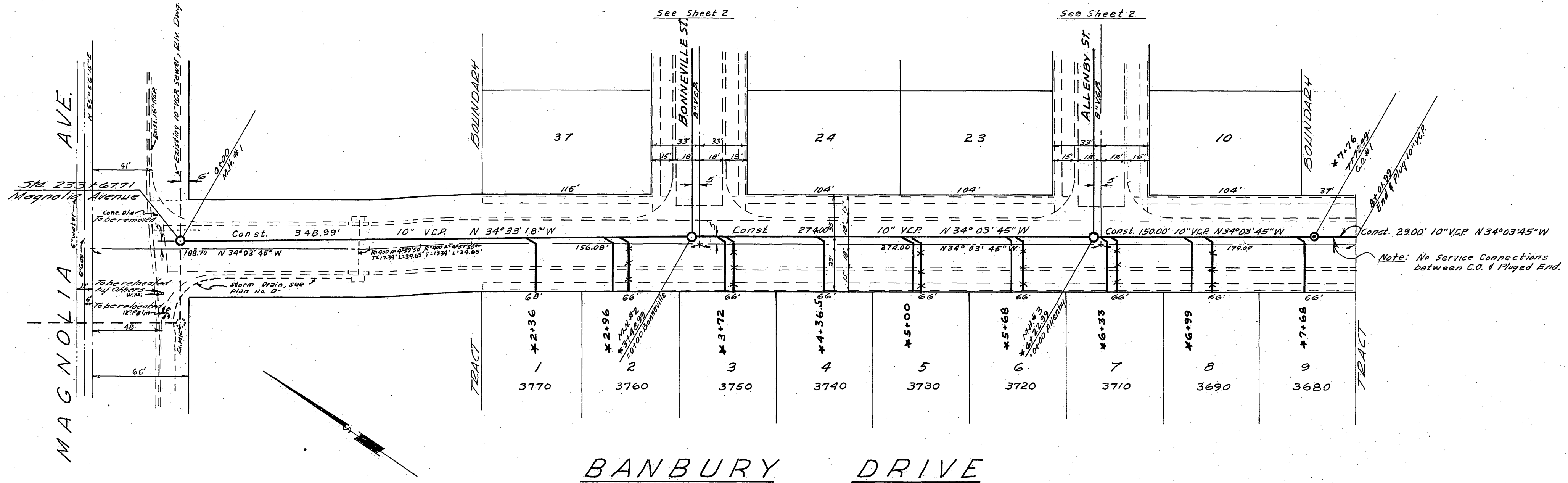
PROFILE	DRAWN	DATE
NOTE BOOK	PLANNED	
NO.	GRADES CHECKED	
	BY	
	DATE	

BENCH MARK: Elev. 743.20 FB. 561, P. 2
 3/8" bolt set in Power Pole #12796-J at the Southeast Cor. of Tyler & Magnolia.

GENERAL NOTES:

- Construction shall be in accordance with the City of Riverside, Department of Public Works, Standard Specifications No. 401 and Standard Drawings.
- It shall be the responsibility of the Contractor to clear the right of way in accordance with the provisions of the law as it affects each utility including irrigation lines and appurtenances and at no cost to the City, or the latest revision thereof.
- Joints in vitrified clay pipe sewers shall conform to ASTM Standard C-425-60-T, or the latest revision thereof.
- Pipe shall be bedded per Case II, Standard Drawing No. 452, unless otherwise specified on plan.
- Location of wyes and laterals to be determined in the field.
- NOTE TO CONTRACTOR:** The existence and location of any underground utility pipes or structures shown on these plans are obtained by a search of the available records. To the best of our knowledge, there are no existing utilities, except as shown on these plans. The Contractor is required to take due precautionary measures to protect the utility lines shown and any other lines not of record or not shown on these plans.

PLAN	DRAWN	DATE
NOTE BOOK	PLANNED	
NO.	ALIGNMENT CHECKED	
	BY	
	DATE	



QUANTITY ESTIMATE

10" Vitrified Clay Pipe	802 L.F.
8" Vitrified Clay Pipe	1,039 L.F.
Manhole Standard No. 500	5 Ea.
Cleanout Standard No. 560	3 Ea.
4" Vitrified Clay Pipe	12.66 L.F.
4"x10" Wyes	9 Ea.
4"x8" Wyes	28 Ea.

INDEXED R.R.

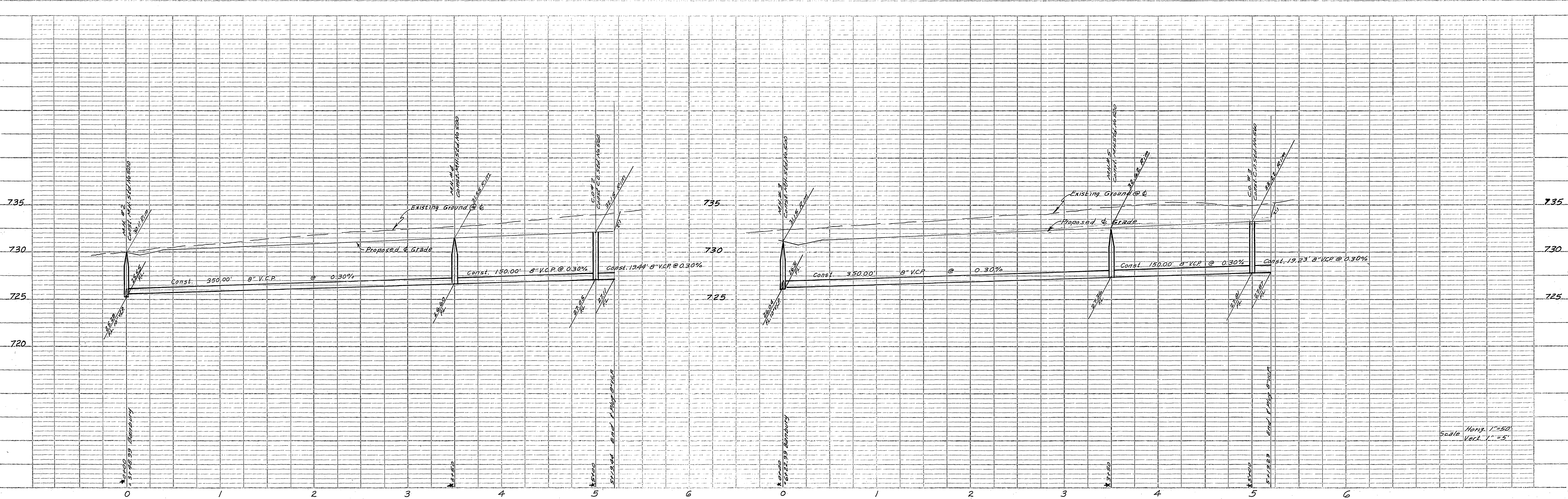
MARK	DATE	DESCRIPTION

ALBERT A. WEBB ASSOCIATES
 CIVIL ENGINEERS - RIVERSIDE, CALIFORNIA
 APPROVED: *Albert A. Webb* DATE 5/15/64
 CITY OF RIVERSIDE, CALIFORNIA
 DEPARTMENT OF PUBLIC WORKS
SEWER PLAN & PROFILE
BANBURY DRIVE
 TRACT No. 2797

DATE	May 1964	SCALE	1" = 50'	APPROVED BY	<i>W. O. ...</i>
DRAWN	BEL	W.P.	63-300	NO.	5-551
CHECKED	W.B. ...	E.B.	561	DATE	6-26-64

SHEET 1 OF 2

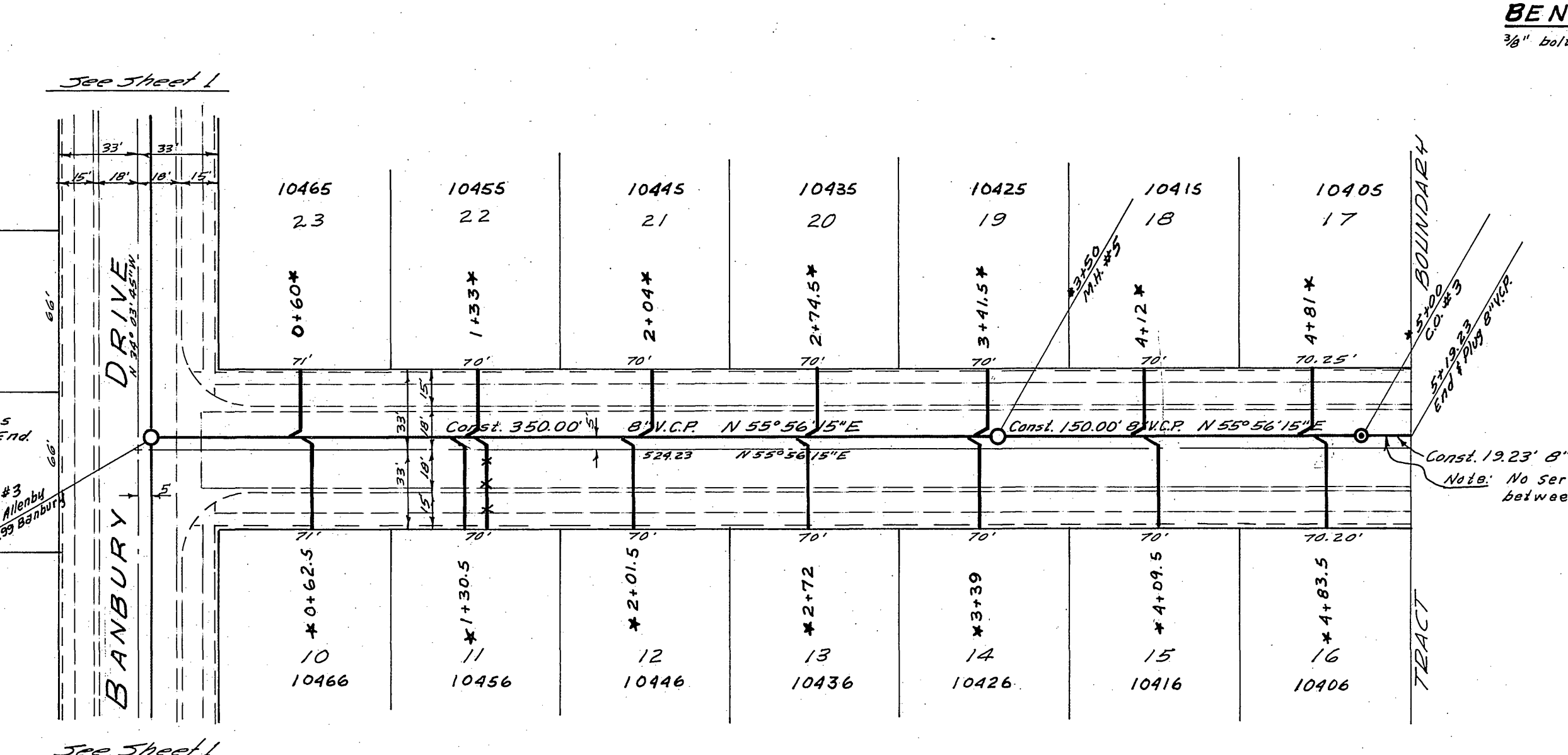
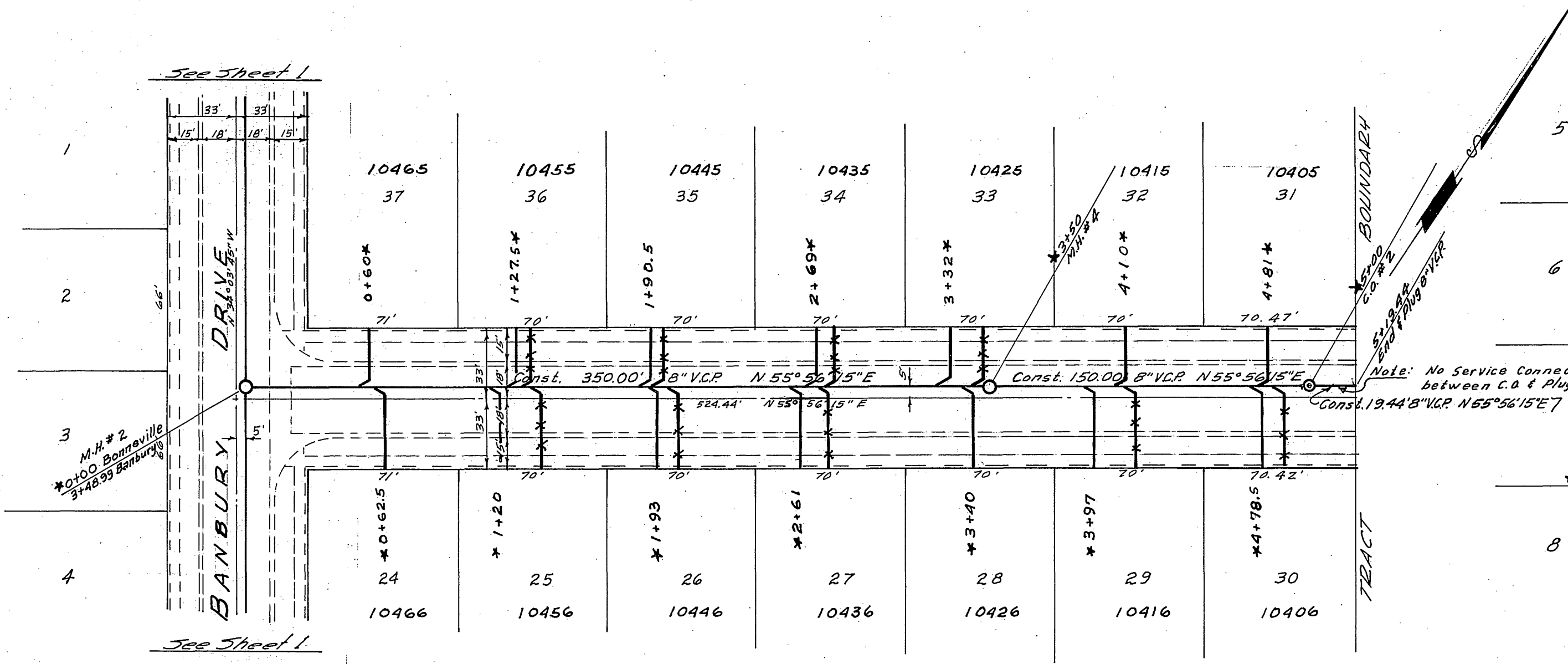
* As built 10/13/64 B.E.



PROFILE	DATE
NO. 5-551	
BY	
DATE	

Scale: Horiz. 1" = 50'
Vert. 1" = 5'

BENCH MARK: Elev. 742.20, F.B. 561, P. 2
3/8" bolt set in Power Pole #12796-J at the south east cor Tyler & Magnolia



BONNEVILLE STREET

ALLENBY STREET

ALBERT A. WEBB ASSOCIATES
CIVIL ENGINEERS - RIVERSIDE, CALIFORNIA
APPROVED: *[Signature]* DATE 5/25/64

REVISION		CITY OF RIVERSIDE, CALIFORNIA DEPARTMENT OF PUBLIC WORKS
MARK	DATE	
		SEWER PLAN & PROFILE
		BONNEVILLE STREET
		ALLENBY STREET
		TRACT No. 2797
DATE	SCALE	APPROVED BY
MAY 1964	1" = 50'	<i>[Signature]</i>
DRAWN	N.O.	NO. 5-551
B.E.L.	63-300	DATE 6-26-64
CHECKED	F.B.	SHEET 2 OF 2
W.B. [Signature]	561	

* As built 10/13/64 BE

Dwg. No. 63-300-B