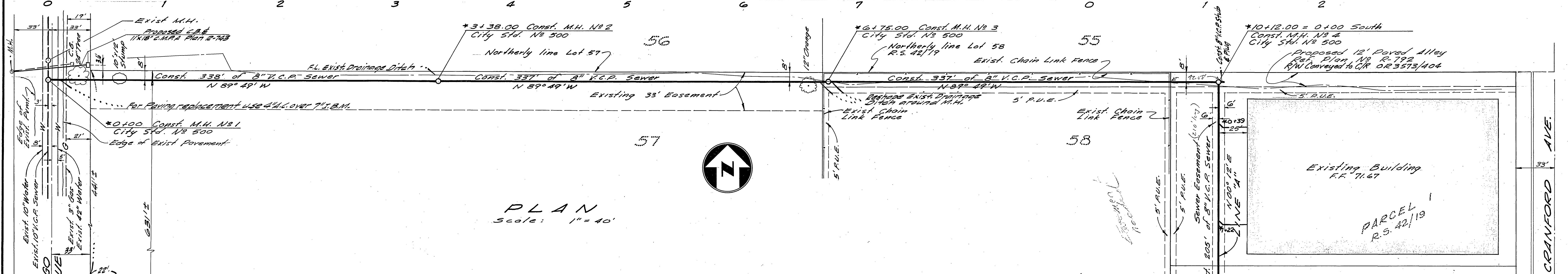


PROFILE
Scale: Horiz. 1" = 40'
Vert. 1" = 4'



PLAN
Scale: 1" = 40'

GENERAL NOTES

1. Construction shall be in accordance with the City of Riverside Department of Public Works, Standard Specifications No. 461 and Standard Drawings.
2. It shall be the responsibility of the contractor to clear the right of way in accordance with the provisions of the law as it affects each utility including irrigation lines and appurtenances, and of no cost to the City.
3. Joints in vitrified clay pipe sewers, shall conform to A.S.T.M. Standard C-425-60 T, or the latest revision thereof.
4. Pipe shall be bedded per case II, Standard Drawing No. 452, unless otherwise specified on plan.
5. Location of wyes and laterals to be determined in the field.
6. All stubs and laterals to be constructed in accordance with Standard Drawing No. 562. Stubs shall be plugged and capped.
7. No responsibility for accuracy or omission of underground structures or utilities is assumed or implied. The data shown hereon is taken from available records. The contractor shall be responsible for verification and location of all underground structures or utilities, to notify the owners of same prior to trenching, and to protect same from damage during construction.
8. Existing Drainage Ditch shall be left with a clear unobstructed channel.

BENCH MARK:
6" x 6" concrete monument
at the southeast corner
of 8th Street and Cranford
Avenue.
ELEV: 977.87

REVISIONS			
MARK	DATE	DESCRIPTION	
*	1/14/64	As built BE.	

DESIGNED BY	SUBMITTED BY	APPROVED BY	REV. NO.
DRAWN BY	PARK DEPT.	TRAFFIC DIV.	
CHECKED BY	RECOMMENDED BY		
DATE 8-3-64		SHEET 1 OF 1	

CRAWLEY & HAWKINS
SURVEYORS AND ENGINEERS
Riverside, California
Approved *George O. Crawley* Field Bk. 55/50-39
R.E. No. 9455 Date 6-26-64

CITY OF RIVERSIDE, CALIFORNIA
DEPARTMENT OF PUBLIC WORKS

SEWER PLAN & PROFILE
ALLEY
Between Chicago Ave. & Cranford Ave.
673' ± North of ½ of Eighth St.

INDEXED R.R.
R.S. 775