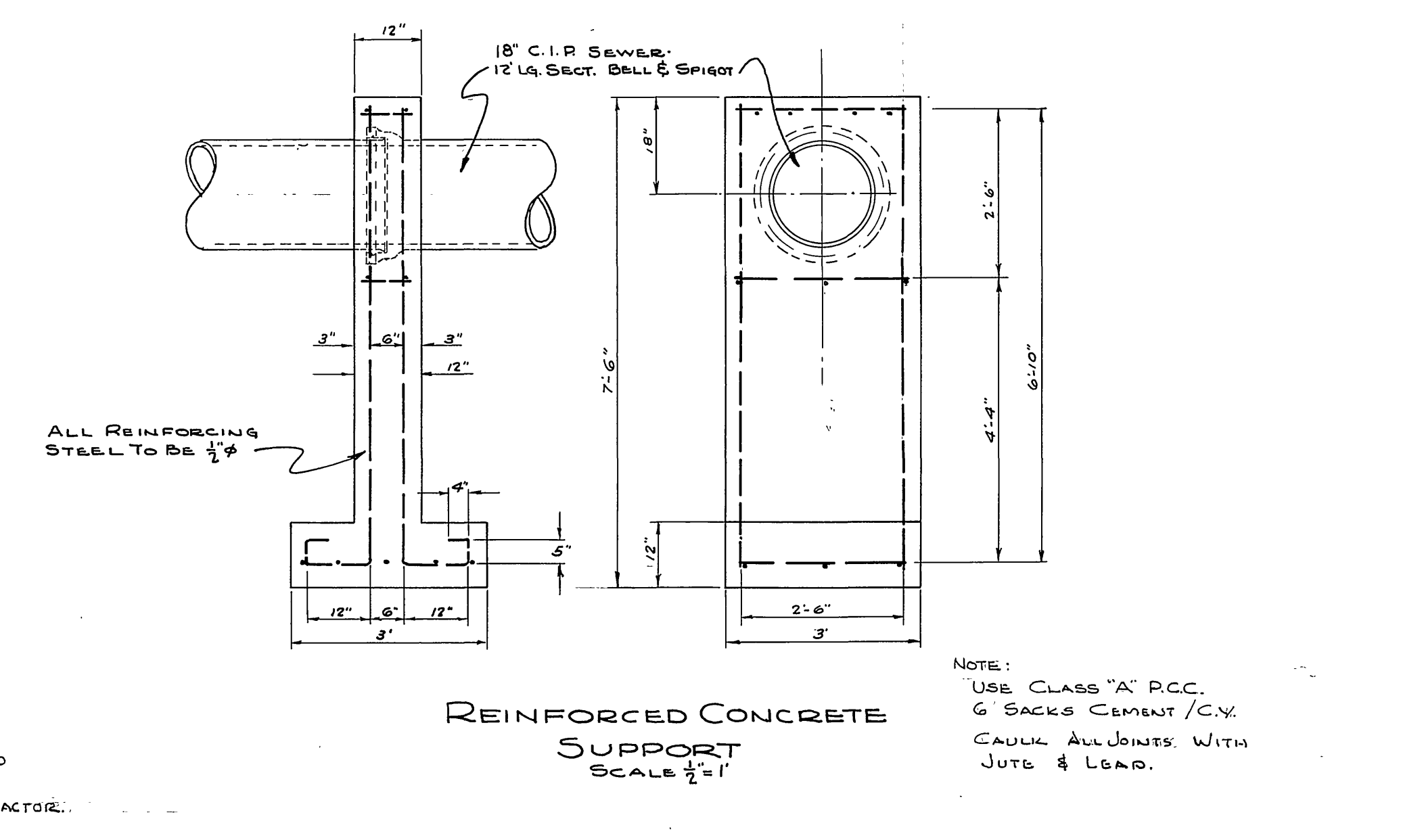
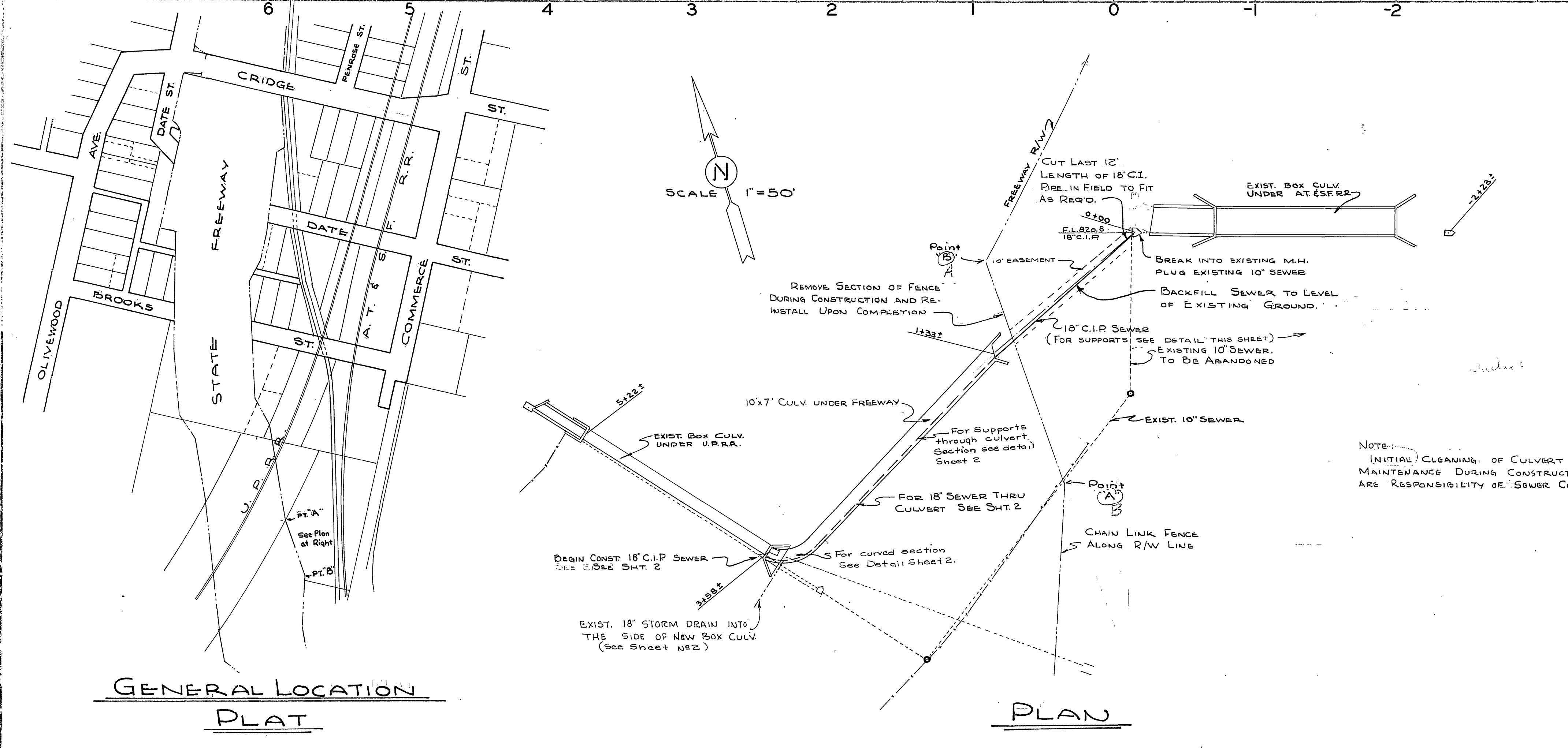
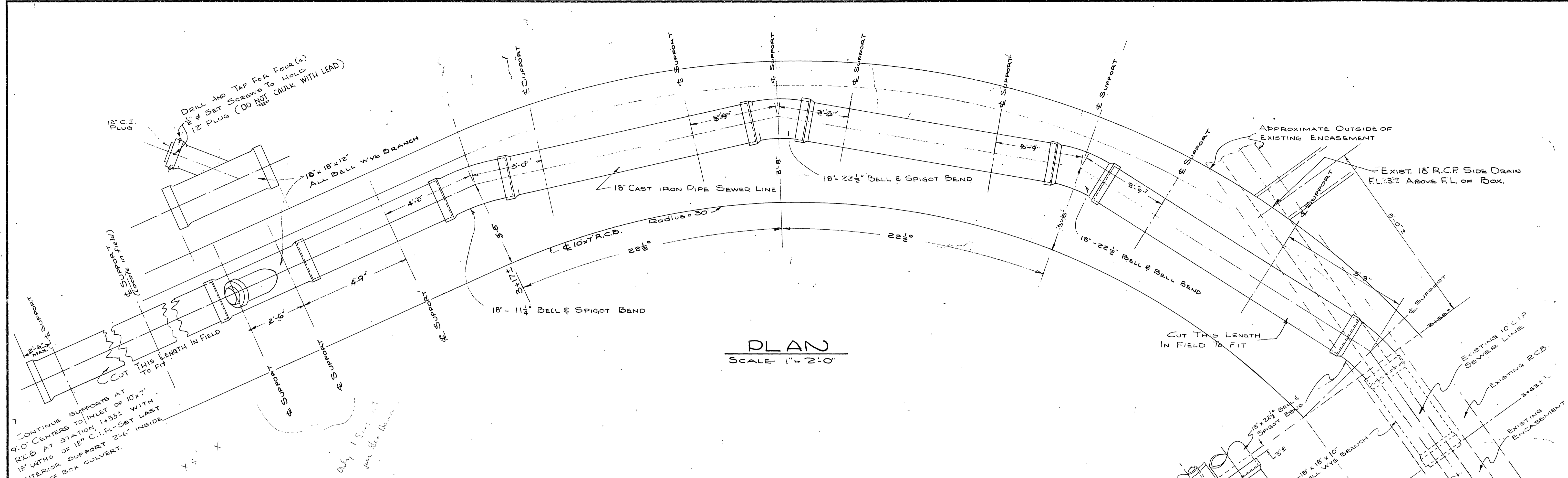


PROFILE	
NO.	DATE



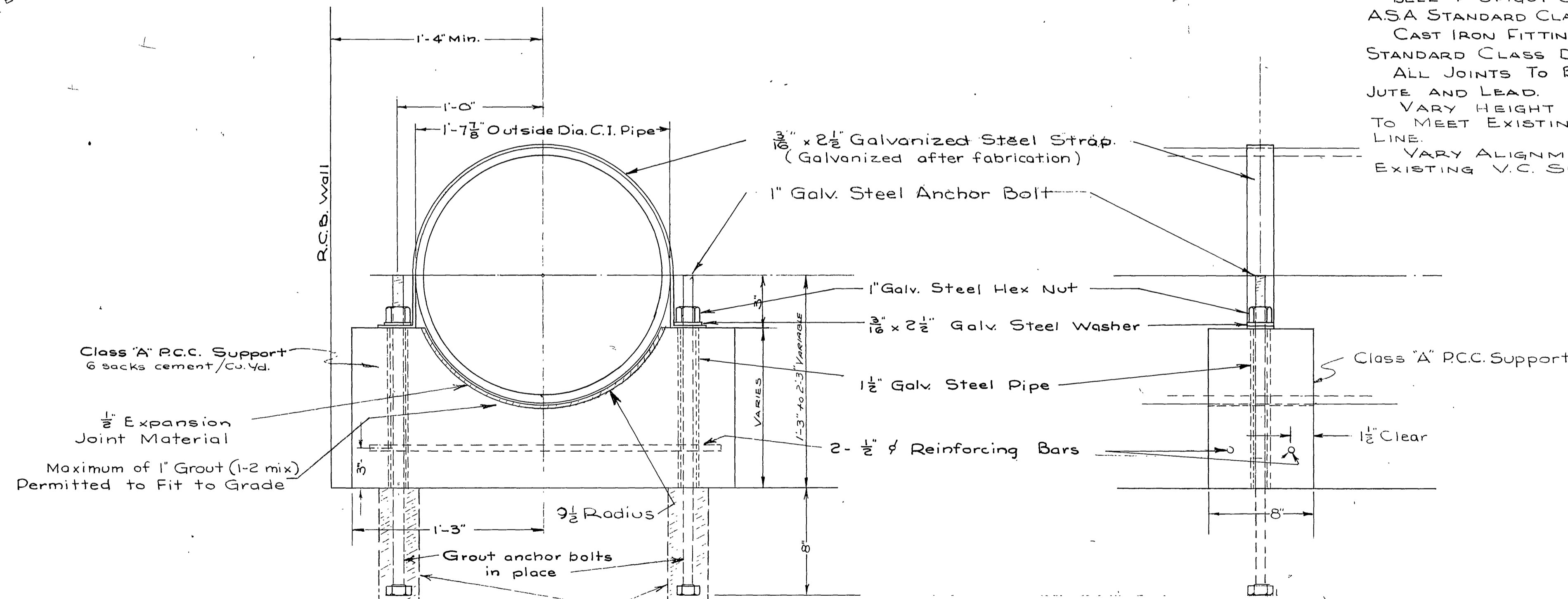
PLAN	
NO.	DATE

CITY OF RIVERSIDE CALIFORNIA DEPARTMENT OF PUBLIC WORKS	
SEWER RELOCATION VICTORIA TRUNK SEWER SECTION II STATE FREEWAY	
DESIGNED BY <i>W. B. ...</i>	CHECKED BY J. L. B.
APPROVED BY <i>W. M. ...</i> DIRECTOR OF PUBLIC WORKS	DATE 12-18-57
S-56	
SHEET 1 OF 2	



CONTINUE SUPPORTS AT 9'-0" CENTERS TO INLET OF 10"x7" R.C.B. AT STATION 1+33.3 WITH 18" WTHS OF 18" C.I.P. - SET LAST INTERIOR SUPPORT 2'-6" INSIDE END OF BOX COLVERT.

BELL & SPIGOT CAST IRON PIPE
ASA STANDARD CLASS 150
CAST IRON FITTINGS - A.W.W.A.
STANDARD CLASS D
ALL JOINTS TO BE CAULKED WITH JUTE AND LEAD.
VARY HEIGHT OF SUPPORTS TO MEET EXISTING V.C. SEWER LINE.
VARY ALIGNMENT TO MEET EXISTING V.C. SEWER LINE.



PIPE SUPPORT DETAIL
No Scale

Note:
Bituminous coating to be applied to all exposed Galvanized surfaces

3" DIA. HOLES TO BE CUT INTO FLOOR OF BOX.

REVISIONS			CITY OF RIVERSIDE CALIFORNIA DEPARTMENT OF PUBLIC WORKS
MARK	DATE	DESCRIPTION	
			SEWER RELOCATION VICTORIA TRUNK SEWER SECTION II STATE FREEWAY
DESIGNED BY	CHECKED BY	APPROVED BY	S-56 SHEET 2 OF 2
DRAWN BY	JLB	[Signature] DIRECTOR OF PUBLIC WORKS	
RECOMMENDED BY	Francis J. [Signature] ASSISTANT CITY ENGINEER	DATE 12-18-57	