

ASSESSMENT NO. 504

## DIAGRAM

EXHIBITING BARBARA - JANE SANITARY SEWER DISTRICT  
IN THE CITY OF RIVERSIDE, CALIFORNIA, AND THE WORK WHICH HAS BEEN DONE  
PURSUANT TO THE CONTRACT BETWEEN THE SUPERINTENDENT OF STREETS OF  
SAID CITY AND EDWARD J. MEYER dba HIGHLAND SEWER CONSTRUCTION DATED MAR. 3, 1965,  
FOR THE CONSTRUCTION OF A SANITARY SEWER AND APPURTENANCES.

AS IS MORE PARTICULARLY DESCRIBED IN SAID CONTRACT, TO WHICH REFERENCE  
IS HEREBY MADE FOR FURTHER PARTICULARS.

SAID DIAGRAM ALSO SHOWS EACH SEPARATE LOT OR PARCEL OF LAND WITHIN THE  
LIMITS OF THE ASSESSMENT DISTRICT, AND THE DIMENSIONS OF EACH SUCH LOT OR  
PARCEL OF LAND, AND THE RELATIVE LOCATION OF THE SAME TO THE WORK DONE.  
EACH LOT OR PARCEL OF LAND IS NUMBERED IN RED INK TO CORRESPOND TO THE  
RED INK NUMBERS IN THE ASSESSMENT.

HEREIN FIGURES NEXT TO PROPERTY LINES SHOW LENGTH OF SAID LINES IN FEET  
AND DECIMALS THEREOF.

THE MARK (') MEANS FEET.

PROPERTY LINES THAT DIFFER FROM THE RECORDED SUBDIVISIONS ARE SHOWN BY  
BROKEN LINES.

THE DISTRICT BENEFITED IS BOUNDED BY A HEAVY DASHED LINE.

PROPERTY INCLUDED IN THIS ASSESSMENT IS SHOWN ON THE FOLLOWING RECORD-  
ED MAPS:

ARLINGTON HEIGHTS - M.B. 11, PGS. 20-21, S.B. CO. REC.

BARBARA - JEAN TRACT - M.B. 27, PG. 73, RIV. CO. REC.

HEREIN THE DIFFERENT KINDS OF WORK  
PERFORMED ARE SHOWN AS FOLLOWS:

— 8" MAIN LINE  
— 4" HOUSE LATERAL  
— 8" x 4" WYE  
○ MANHOLE  
⊙ CLEANOUT

HERE FOLLOWS A STATEMENT OF AMOUNTS OF  
DIFFERENT KINDS OF WORK DONE PURSUANT TO  
THE HERE-IN-BEFORE IDENTIFIED CONTRACT  
AND TO RESOLUTION OF INTENTION NO. 10132,  
ADOPTED BY THE CITY COUNCIL OF THE CITY  
OF RIVERSIDE, CALIFORNIA ON THE 24th DAY  
OF NOVEMBER, 1964.

1495 L.F. 8" VITRIFIED CLAY PIPE  
814 L.F. 4" VITRIFIED CLAY PIPE  
24 EA. 8" x 4" WYES  
6 EA. MANHOLES - STD. DWG. NO. 500.  
1 EA. CLEANOUTS - STD. DWG. NO. 560.  
1495 L.F. PAVEMENT REPLACEMENT FOR 8" VCP  
355 L.F. PAVEMENT REPLACEMENT FOR 4" VCP

I HEREBY CERTIFY THAT THE ABOVE WORK WAS DONE IN ACCORDANCE  
WITH LINES AND GRADES FURNISHED OR APPROVED BY ME, AND THAT  
THE DIAGRAM OF THE ASSESSMENT DISTRICT AND THE QUANTITIES  
OF WORK SHOWN HEREON ARE CORRECT.


  
CITY ENGINEER OF THE  
CITY OF RIVERSIDE, CALIFORNIA

DIAGRAM RECEIVED:

THIS DAY OF , 19

SUPERINTENDENT OF STREETS OF THE  
CITY OF RIVERSIDE, CALIFORNIA

RECORDED:

AT O'CLOCK, .M.,  
THIS DAY OF , 19

SUPERINTENDENT OF STREETS OF THE  
CITY OF RIVERSIDE, CALIFORNIA

ASSESSMENT NO. 504

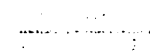


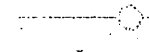
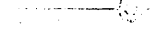
# DIAGRAM

EXHIBITING BARBARA-JANE SANITARY SEWER DISTRICT  
IN THE CITY OF RIVERSIDE, CALIFORNIA, AND THE WORK WHICH HAS BEEN DONE  
PURSUANT TO THE CONTRACT BETWEEN THE SUPERINTENDENT OF STREETS OF  
SAID CITY AND EDWARD J. MEYER ON HIGHLAND SEWER CONSTRUCTION DATED MAR. 3, 1933,  
FOR THE CONSTRUCTION OF A SANITARY SEWER AND APPURTENANCES.

AS IS MORE PARTICULARLY DESCRIBED IN SAID CONTRACT, TO WHICH REFERENCE  
IS HEREBY MADE FOR FURTHER PARTICULARS.  
SAID DIAGRAM ALSO SHOWS EACH SEPARATE LOT OR PARCEL OF LAND WITHIN THE  
LIMITS OF THE ASSESSMENT DISTRICT, AND THE DIMENSIONS OF EACH SUCH LOT OR  
PARCEL OF LAND, AND THE RELATIVE LOCATION OF THE SAME TO THE WORK DONE.  
EACH LOT OR PARCEL OF LAND IS NUMBERED IN RED INK TO CORRESPOND TO THE  
RED INK NUMBERS IN THE ASSESSMENT.  
HEREIN FIGURES NEXT TO PROPERTY LINES SHOW LENGTH OF SAID LINES IN FEET  
AND DECIMALS THEREOF.  
THE MARK (') MEANS FEET.  
PROPERTY LINES THAT DIFFER FROM THE RECORDED SUBDIVISIONS ARE SHOWN BY  
BROKEN LINES.  
THE DISTRICT BENEFITED IS BOUNDED BY A HEAVY DASHED LINE.  
PROPERTY INCLUDED IN THIS ASSESSMENT IS SHOWN ON THE FOLLOWING RECORD-  
ED MAPS:

ARLINGTON HEIGHTS - M.B. 11, PGS. 20-21, S.B. CO. REC.  
BARBARA - JEAN TRACT - M.B. 27, PG. 73, N.V. CO. REC.

HEREIN THE DIFFERENT KINDS OF WORK  
PERFORMED ARE SHOWN AS FOLLOWS:

-  6" MAIN LINE
-  4" HOUSE LATERAL
-  6" x 4" WYE
-  MANHOLE
-  CLEAROUT

HERE FOLLOWS A STATEMENT OF AMOUNTS OF  
DIFFERENT KINDS OF WORK DONE PURSUANT TO  
THE HERE-IN-BEFORE IDENTIFIED CONTRACT  
AND TO RESOLUTION OF INTENTION NO. 1032,  
ADOPTED BY THE CITY COUNCIL OF THE CITY  
OF RIVERSIDE, CALIFORNIA ON THE 24th DAY  
OF NOVEMBER, 1934.

- 1495 L.F. 6" VITRIFIED CLAY PIPE
- 814 L.F. 4" VITRIFIED CLAY PIPE
- 24 EA. 6" x 4" WYES
- 6 EA. MANHOLES - STD. DWS. NO. 500
- 1 EA. CLEAROUTS - STD. DWS. NO. 600
- 125 L.F. CEMENT REPLACEMENT FOR 8" VCP
- 365 L.F. CEMENT REPLACEMENT FOR 4" VCP

I HEREBY CERTIFY THAT THE ABOVE WORK WAS DONE IN ACCORDANCE  
WITH LINES AND GRADES FURNISHED OR APPROVED BY ME, AND THAT  
THE DIAGRAM OF THE ASSESSMENT DISTRICT AND THE QUANTITIES  
OF WORK SHOWN HEREON ARE CORRECT.

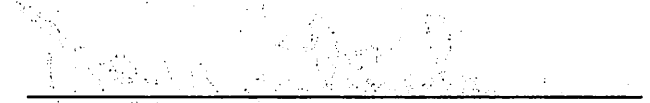
  
CITY ENGINEER OF THE  
CITY OF RIVERSIDE, CALIFORNIA

DIAGRAM RECEIVED:

THIS      DAY OF      , 19

\_\_\_\_\_  
SUPERINTENDENT OF STREETS OF THE  
CITY OF RIVERSIDE, CALIFORNIA

RECORDED:

AT      O'CLOCK, .M.,  
THIS      DAY OF      , 19

\_\_\_\_\_  
SUPERINTENDENT OF STREETS OF THE  
CITY OF RIVERSIDE, CALIFORNIA

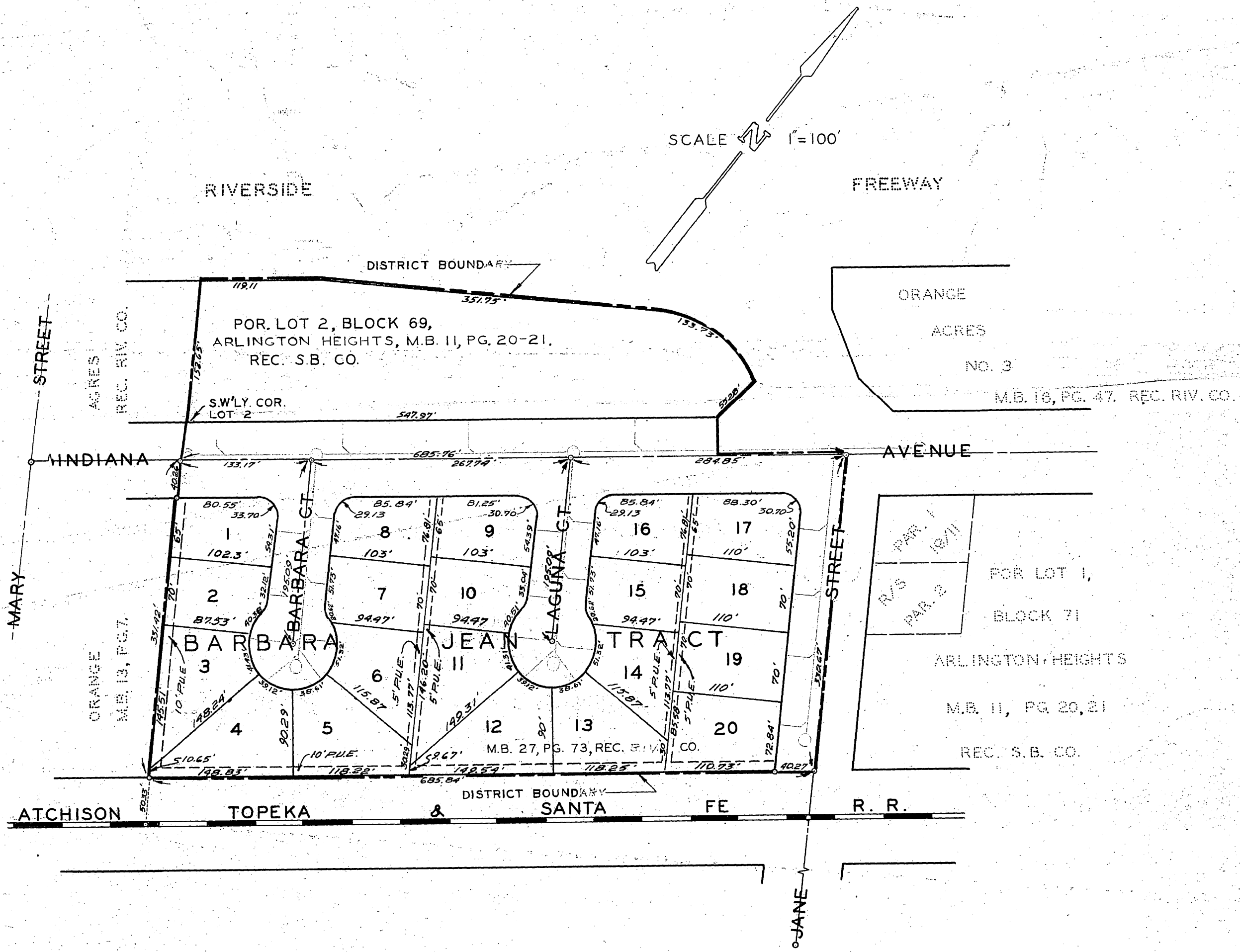


DIAGRAM OF THE PROPERTY AFFECTED OR BENEFITED BY THE WORK IN THE BARBARA - JANE SANITARY SEWER DISTRICT.

REVISIONS			CITY OF RIVERSIDE, CALIFORNIA DEPARTMENT OF PUBLIC WORKS	
MARK	DATE	DESCRIPTION		
			BARBARA - JANE SANITARY SEWER DISTRICT	
DESIGNED BY	SUBMITTED BY	APPROVED BY	PROJ. NO. 6052	
DRAWN BY	PARK DEPT.    TRAFFIC DIV.	DIRECTOR OF PUBLIC WORKS	S-560	
CHECKED BY	RECOMMENDED BY	DATE	SHEET 2 OF 2	

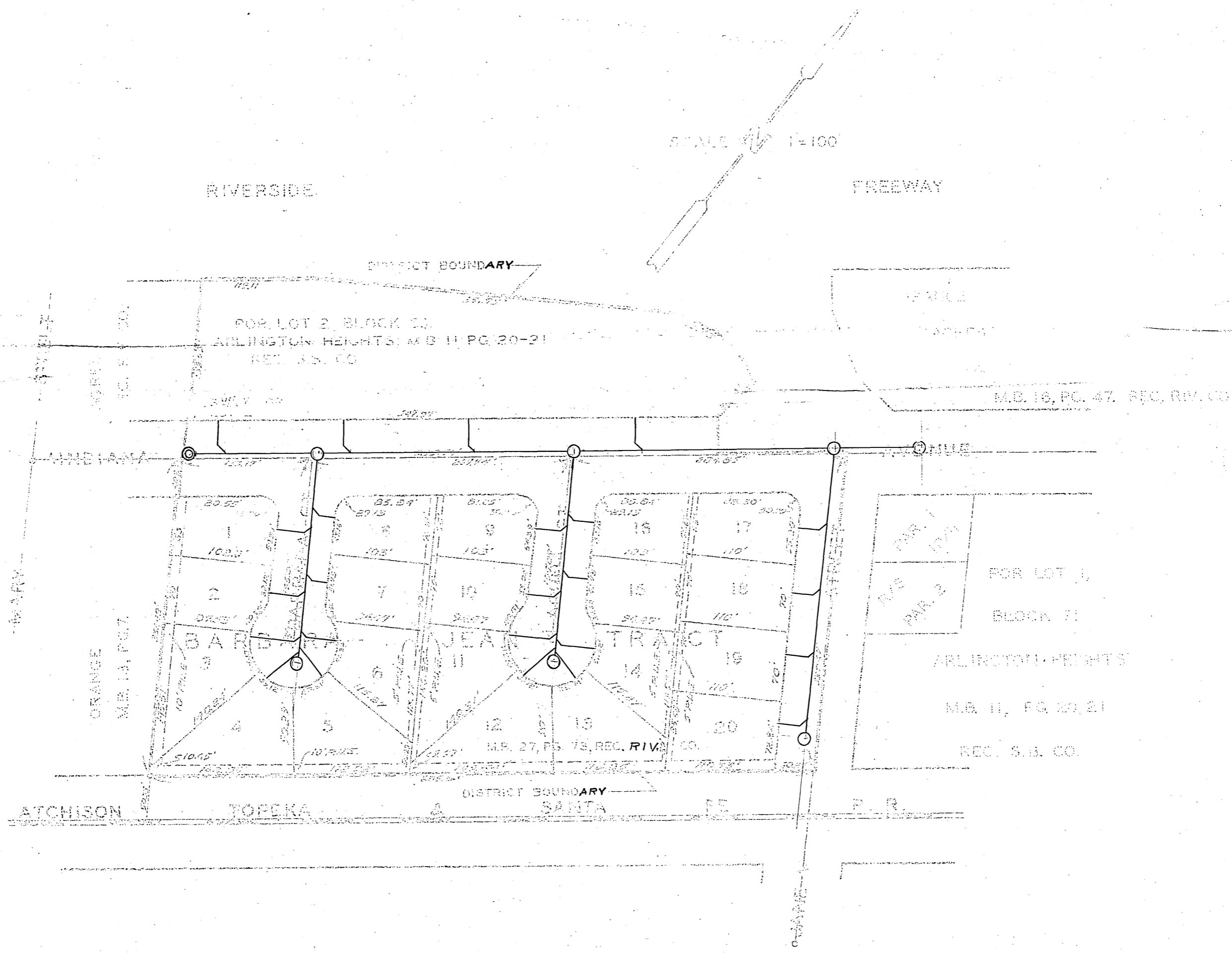


DIAGRAM OF THE PROPERTY AFFECTED OR BENEFITED BY THE WORK IN THE BARBARA - JANE SANITARY SEWER DISTRICT.

REVISIONS		CITY OF RIVERSIDE, CALIFORNIA DEPARTMENT OF PUBLIC WORKS
MARK	DATE	
		BARBARA - JANE SANITARY SEWER DISTRICT
		<div style="display: flex; justify-content: space-between;"> <div> <p>William D. Gardner</p> <p><i>W.D. Gardner</i></p> </div> <div> <p><i>J. Mantuck</i></p> <p>6-28-65</p> </div> <div> <p>S-560-B</p> <p>2 of 2</p> </div> </div>