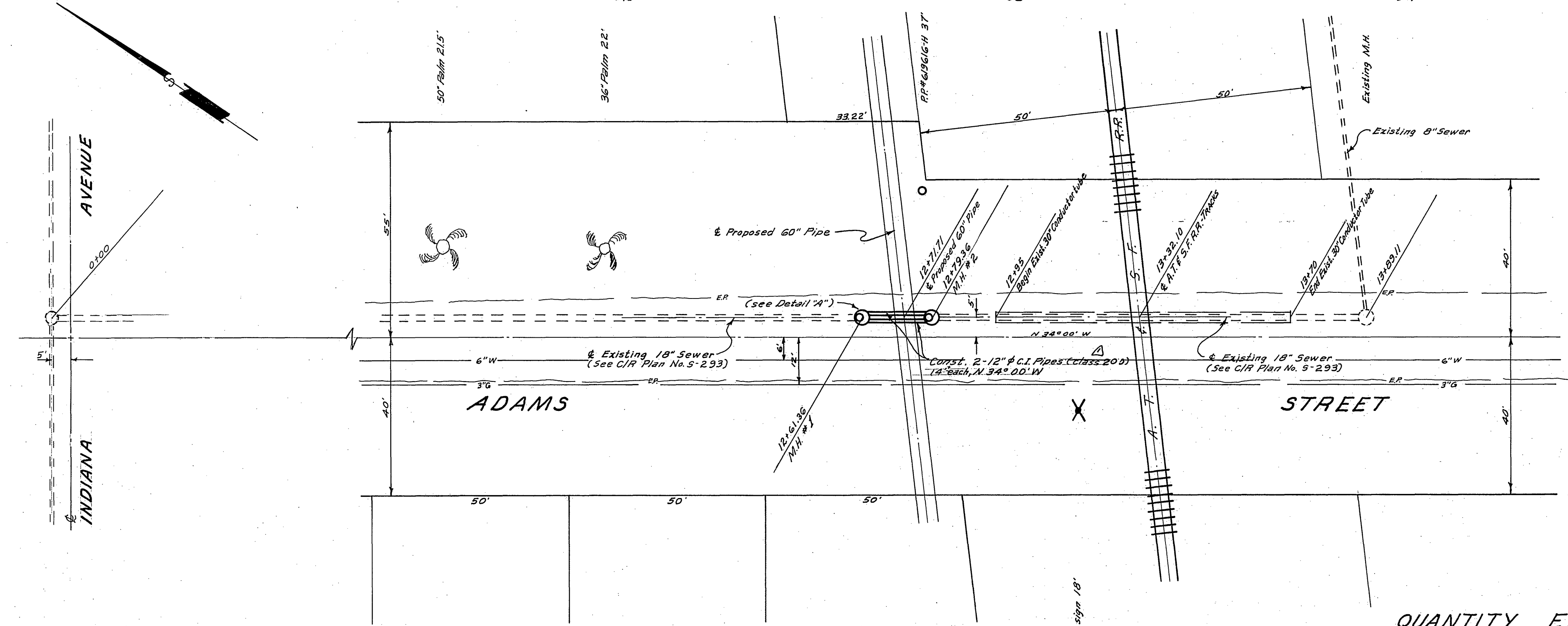


PROFILE	DATE
NO. BOOK	BY
PLANNED	DATE
REVISIONS	
NO. OF REV.	
DATE	

Scale: Horiz. 1"=20'
Vert. 1"=5'

BENCH MARK From CIR Plan No. R-577
Chisled x on curb south side Indiana 240' W of Adams. Elev. 833.23



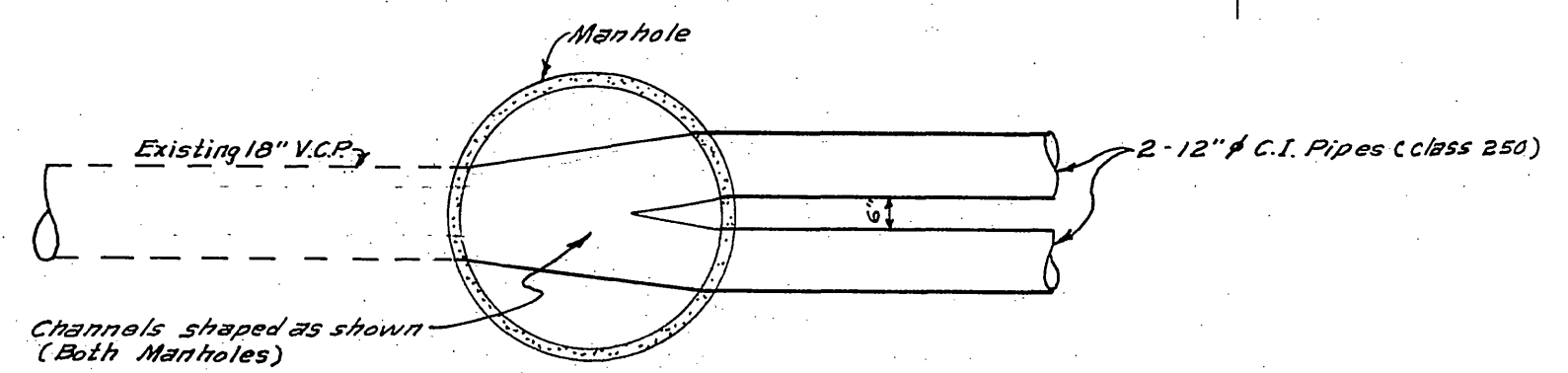
- GENERAL NOTES**
- It shall be the responsibility of the Contractor to clear the right of way in accordance with the provisions of the law as it affects each utility including irrigation lines and appurtenances and at no cost to the City.
 - Construction shall be in accordance with the City of Riverside, Department of Public Works, Standard Specifications No. 461 and Standard Drawings.
 - Joints in vitrified clay pipe sewer shall conform to ASTM Standard C-425-60T, or the latest revision thereof.
 - Pipe shall be bedded in compacted sand from the bottom of trench to a depth above top of 12" pipes equal to width of trench.
 - NOTICE TO CONTRACTOR:** The existence and location of any underground utility pipes or structures shown on these plans are obtained by a search of the available records. To the best of our knowledge, there are no existing utilities except as shown on these plans. The Contractor is required to take due precautionary measures to protect the utility lines shown and any other lines not of record or not shown on these plans.
 - Prior to construction of sewer, Contractor is to expose existing sewer and contact Engineer for verification of existing elevations at sta. 12+60.78 and sta. 12+78.78.

PLAN	DATE
NO. BOOK	BY
PLANNED	DATE
REVISIONS	
NO. OF REV.	
DATE	

ALBERT A. WEBB ASSOCIATES
CIVIL ENGINEERS
RIVERSIDE CALIFORNIA

QUANTITY ESTIMATE

48" I.D. Manhole as per Assoc. Conc. Prod. EC-101 or equal, w/cover & Frame Std. No. 540. 2 Ea.
12" P.C.I. pipe (class 20) 28 L.F.
Pavement Replacement. 110 S.F.



DETAIL 'A'
no scale

REVISIONS		CITY OF RIVERSIDE CALIFORNIA DEPARTMENT OF PUBLIC WORKS
MARK	DATE	
		SEWER PLAN & PROFILE
		ADAMS STREET BETWEEN INDIANA AVE & A.T.S.F.R.
		TRACT No. 2876
DESIGNED BY	9/6/64	 DIRECTOR OF PUBLIC WORKS
DRAWN BY		
RECOMMENDED BY		S-561 SHEET 1 OF 1
DATE	7/14/64	

Dwg. No. G3-233-B

INDEXED