

DATE	BY	REVISION
		REVISED
		REVISED
		REVISED

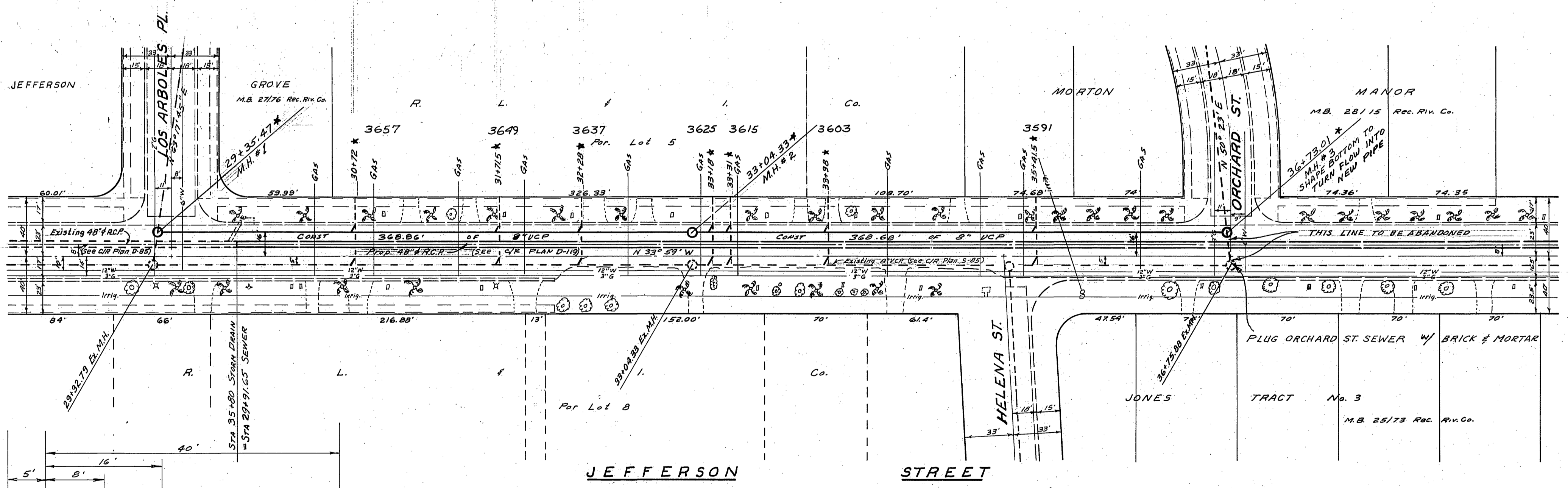
Scale: Horiz. 1" = 50'  
 Vert. 1" = 5'

**BENCH MARK:** Elev. 808.73  
 X on bolt F.H. at Los Arboles & Jefferson St. (taken from CIR Plan 5-85)

**GENERAL NOTES:**

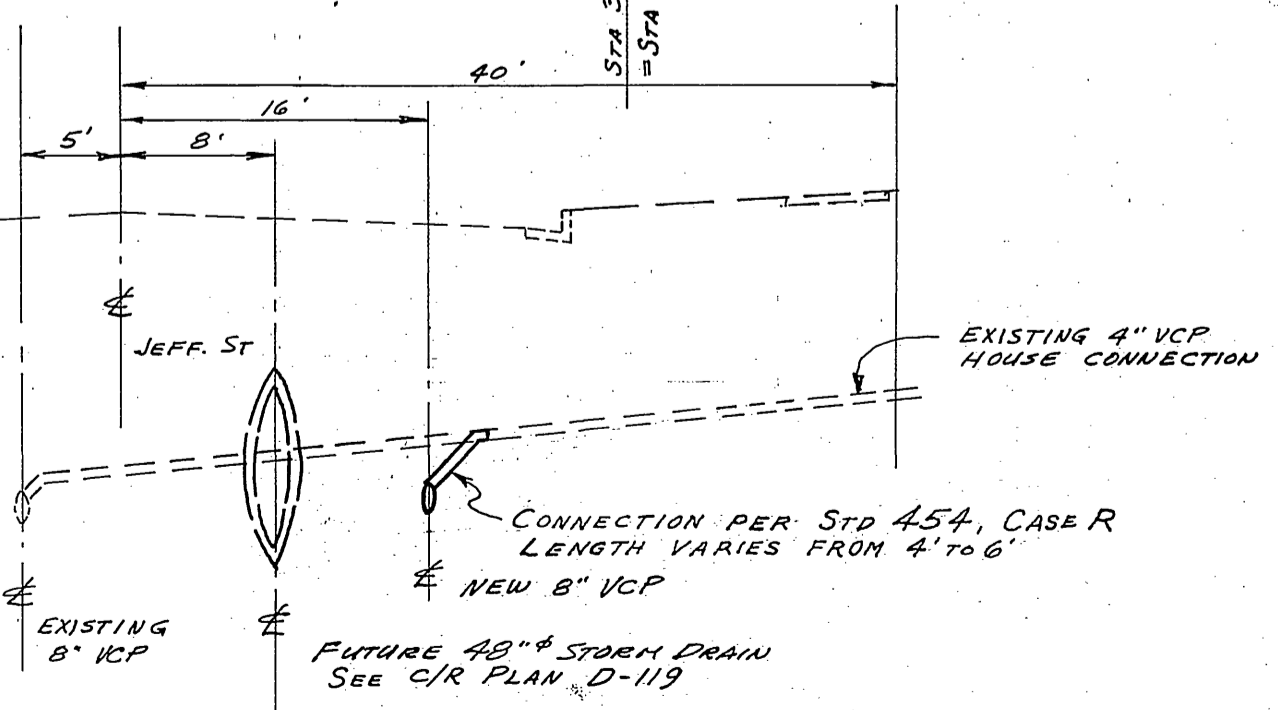
- Construction shall be in accordance with the City of Riverside, Department of Public Works, Standard Specifications No. 461 and Standard Drawings.
- It shall be the responsibility of the Contractor to clear the right of way in accordance with the provisions of the law as it affects each utility including irrigation lines and appurtenances and at no cost to the City.
- Joints in vitrified clay pipe sewer shall conform to ASTM Standard C-425-60T, or the latest revision thereof.
- Pipe shall be bedded per Case II, Standard Drawing No. 452, unless otherwise specified on plan.
- Manhole frames and covers to be set to existing pavement grades.
- NOTICE TO CONTRACTOR:** The existence and location of any underground utility pipes or structures shown on these plans are obtained by a search of the available records. To the best of our knowledge, there are no existing utilities, except as shown on these plans. The Contractor is required to take due precautionary measures to protect the utility lines shown and any other lines not of record or not shown on these plans.

DATE	BY	REVISION
		REVISED
		REVISED
		REVISED



**QUANTITY ESTIMATE**

Manhole Standard No. 500	3 Ea.
8" Vitrified Clay Pipe	738 L.F.
Reconnect Laterals	7 Ea.
Pavement Replacement	2,157 S.F.



**TYPICAL SECTION - LOOKING DOWN STATION**  
 No Scale

**ALBERT A. WEBB ASSOCIATES**  
 CIVIL ENGINEERS  
 RIVERSIDE, CALIFORNIA  
 92506

REVISIONS		CITY OF RIVERSIDE, CALIFORNIA DEPARTMENT OF PUBLIC WORKS	
MARK	DATE	DESCRIPTION	
<b>SEWER PLAN &amp; PROFILE</b>			
<b>JEFFERSON STREET</b>			
<b>BETWEEN</b>			
<b>LOS ARBOLES PL. &amp; ORCHARD ST.</b>			
DESIGNED BY AW	CHECKED BY	APPROVED BY	<b>S-567</b>
DRAWN BY BEL		DIRECTOR OF PUBLIC WORKS	
RECOMMENDED BY		DATE	