

- GENERAL NOTES**
- CONSTRUCTION SHALL BE IN ACCORDANCE WITH THE CITY OF RIVERSIDE, DEPARTMENT OF PUBLIC WORKS, STANDARD SPECIFICATIONS NO. 461 AND STANDARD DRAWINGS.
 - IT SHALL BE THE RESPONSIBILITY OF THE CONTRACTOR TO CLEAR THE RIGHT OF WAY IN ACCORDANCE WITH THE PROVISIONS OF THE LAW AS IT AFFECTS EACH UTILITY INCLUDING IRRIGATION LINES AND APPURTENANCES AND AT NO COST TO THE CITY.
 - JOINTS IN VITRIFIED CLAY PIPE SEWERS SHALL CONFORM TO ASTM STANDARD C-425-60 T, OR THE LATEST REVISION THEREOF.
 - PIPE SHALL BE BEDDED PER CASE II STANDARD DRAWING NO. 452, UNLESS OTHERWISE SPECIFIED ON PLAN.
 - LOCATION OF WYES AND LATERALS TO BE DETERMINED IN THE FIELD.

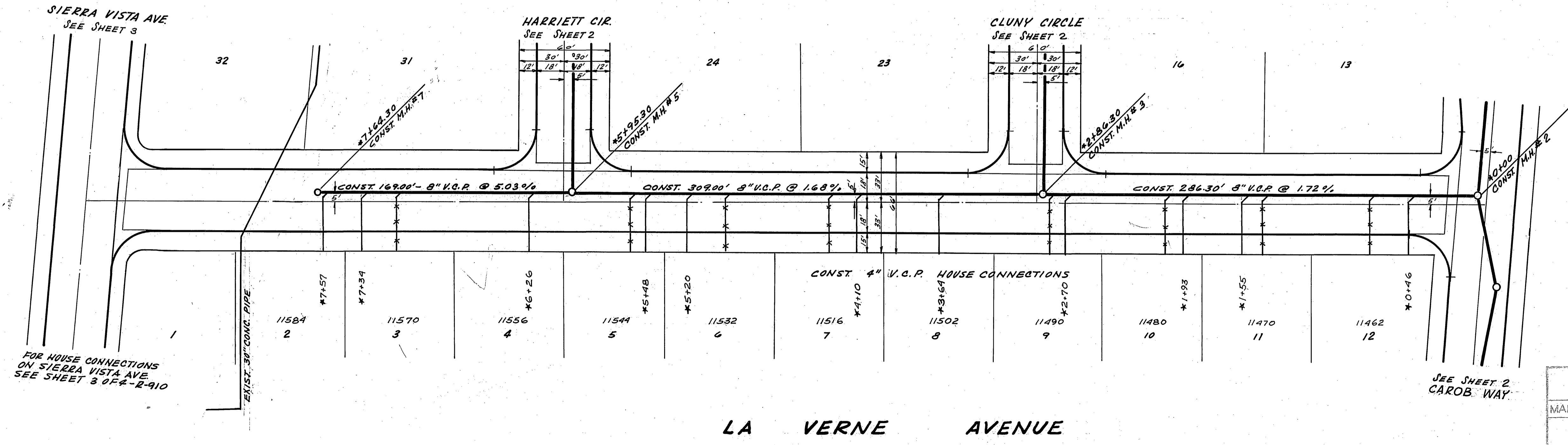
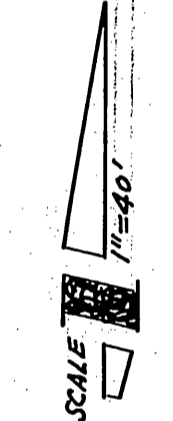
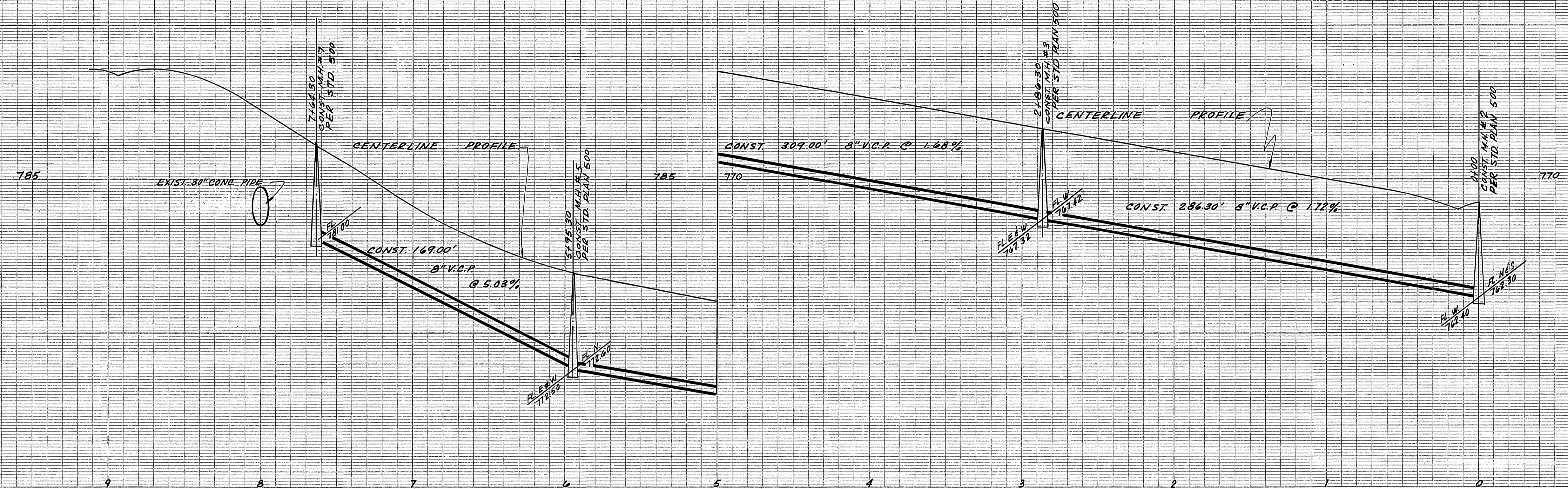
NOTICE TO CONTRACTOR

THE EXISTENCE AND LOCATION OF ANY UNDERGROUND UTILITIES, PIPES OR STRUCTURES SHOWN ON THESE PLANS ARE OBTAINED BY A SEARCH OF THE AVAILABLE RECORDS. TO THE BEST OF OUR KNOWLEDGE THERE ARE NO EXISTING UTILITIES EXCEPT AS SHOWN ON THESE PLANS. THE CONTRACTOR IS REQUIRED TO TAKE DUE PRECAUTIONARY MEASURES TO PROTECT THE UTILITY LINES SHOWN AND ANY OTHER NOT OF RECORD OR NOT SHOWN ON THESE PLANS.

QUANTITY ESTIMATE

8" V.C.P.	1358 L.F.
4" V.C.P. SEWER LATERAL #502	1144 L.F.
STD. M.H. #500	7 EA
STD. CLEANOUT #560	1 EA
CLEANOUT TO BE REMOVED	1 EA
SEWER MAIN SADDLE	3 EA

NOTE:
 FOR HOUSE CONNECTIONS TO LOTS 1, 32, 33, 34, & 35 SEE PLAN R-910 SHT-3



FOR HOUSE CONNECTIONS ON SIERRA VISTA AVE. SEE SHEET 3 OF R-910

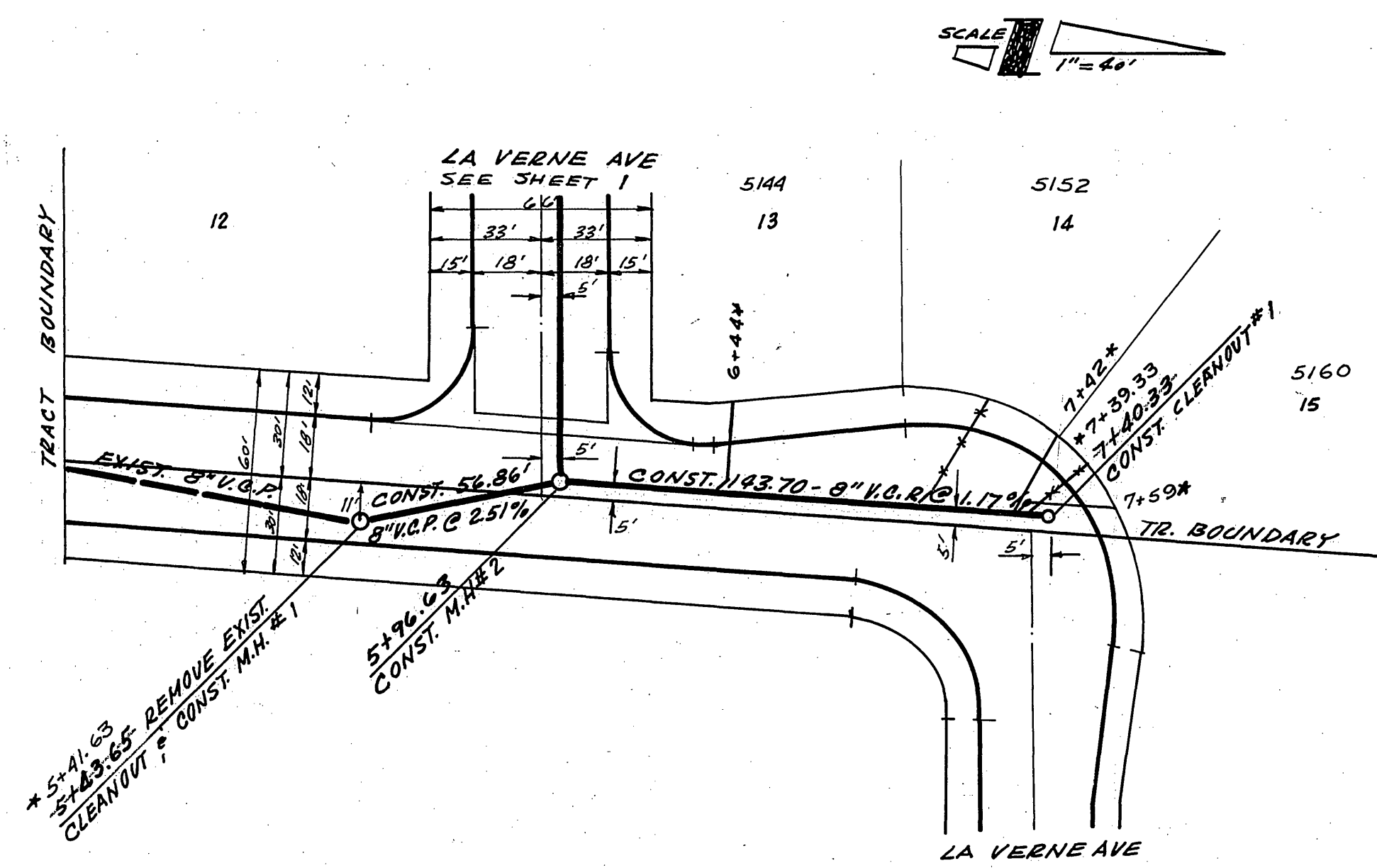
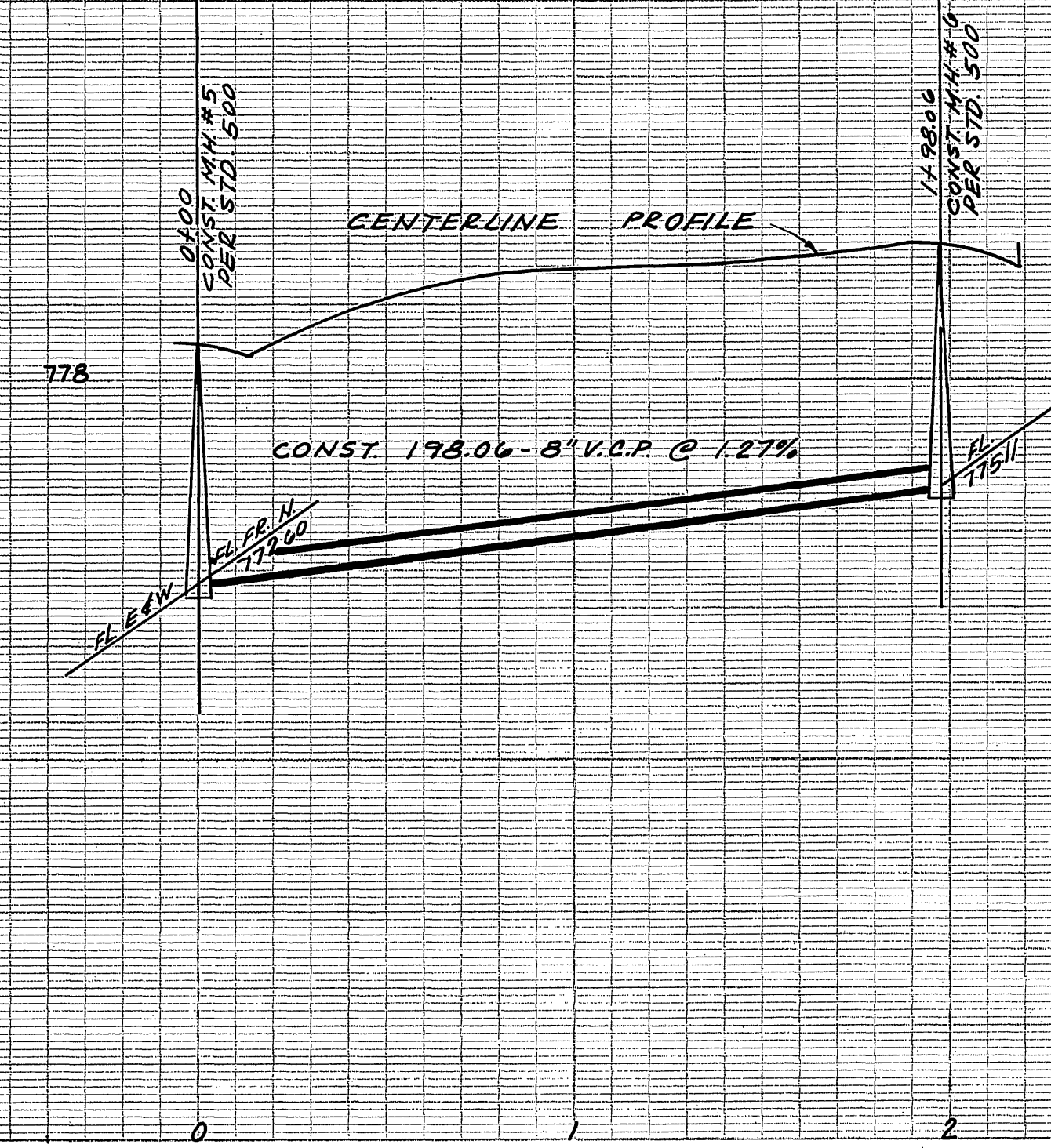
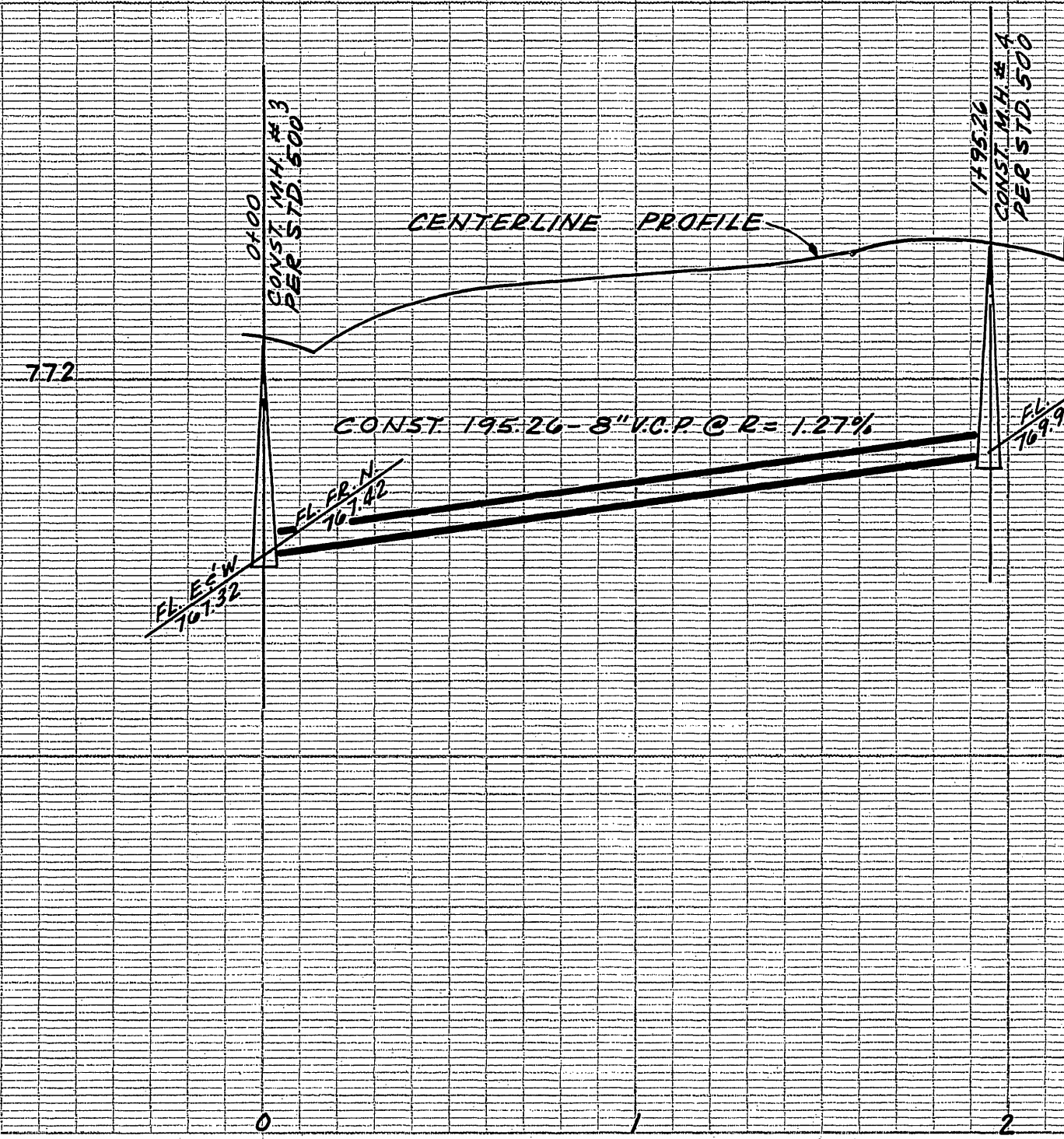
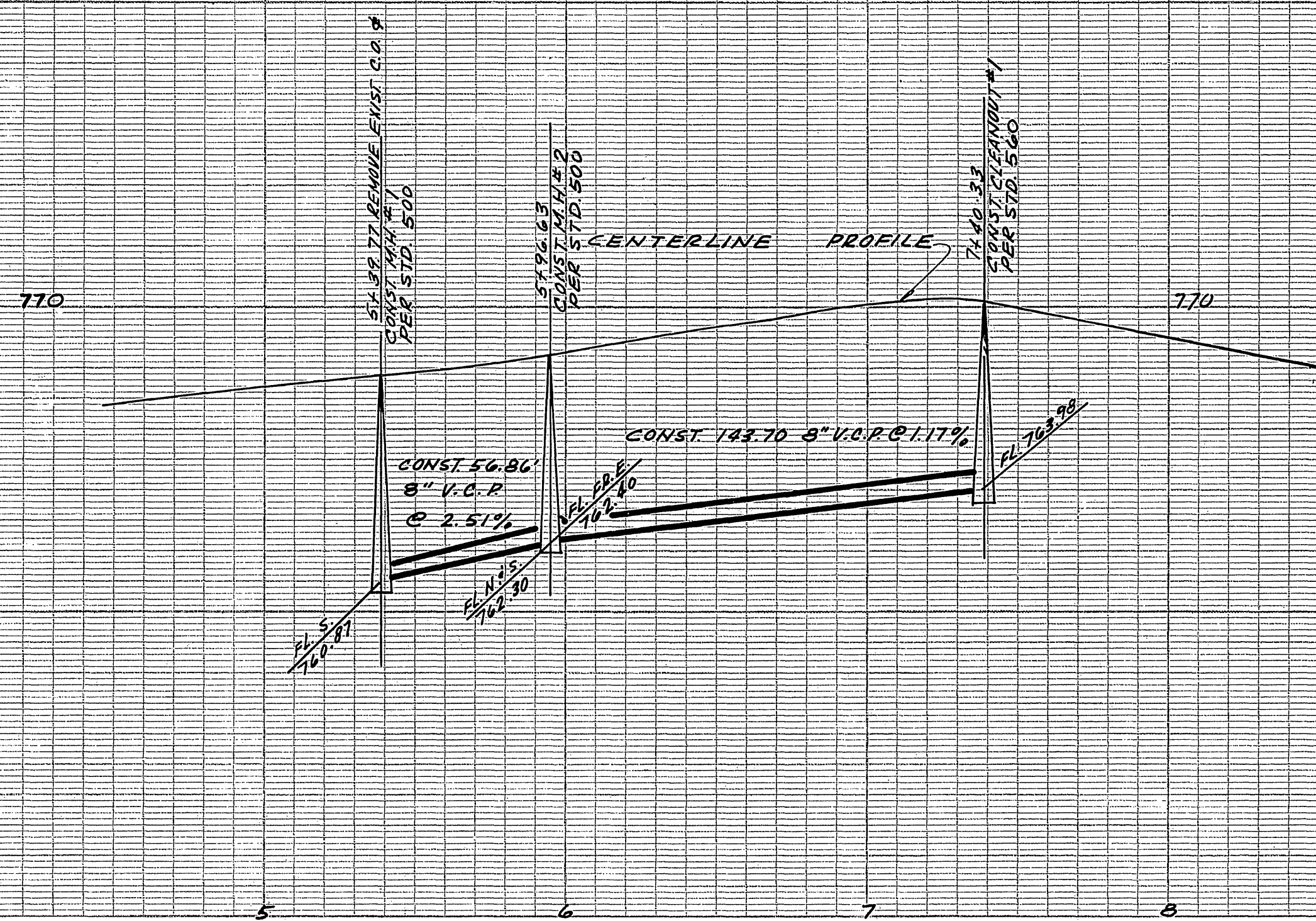
SEE SHEET 2 CAROB WAY

LA VERNE AVENUE

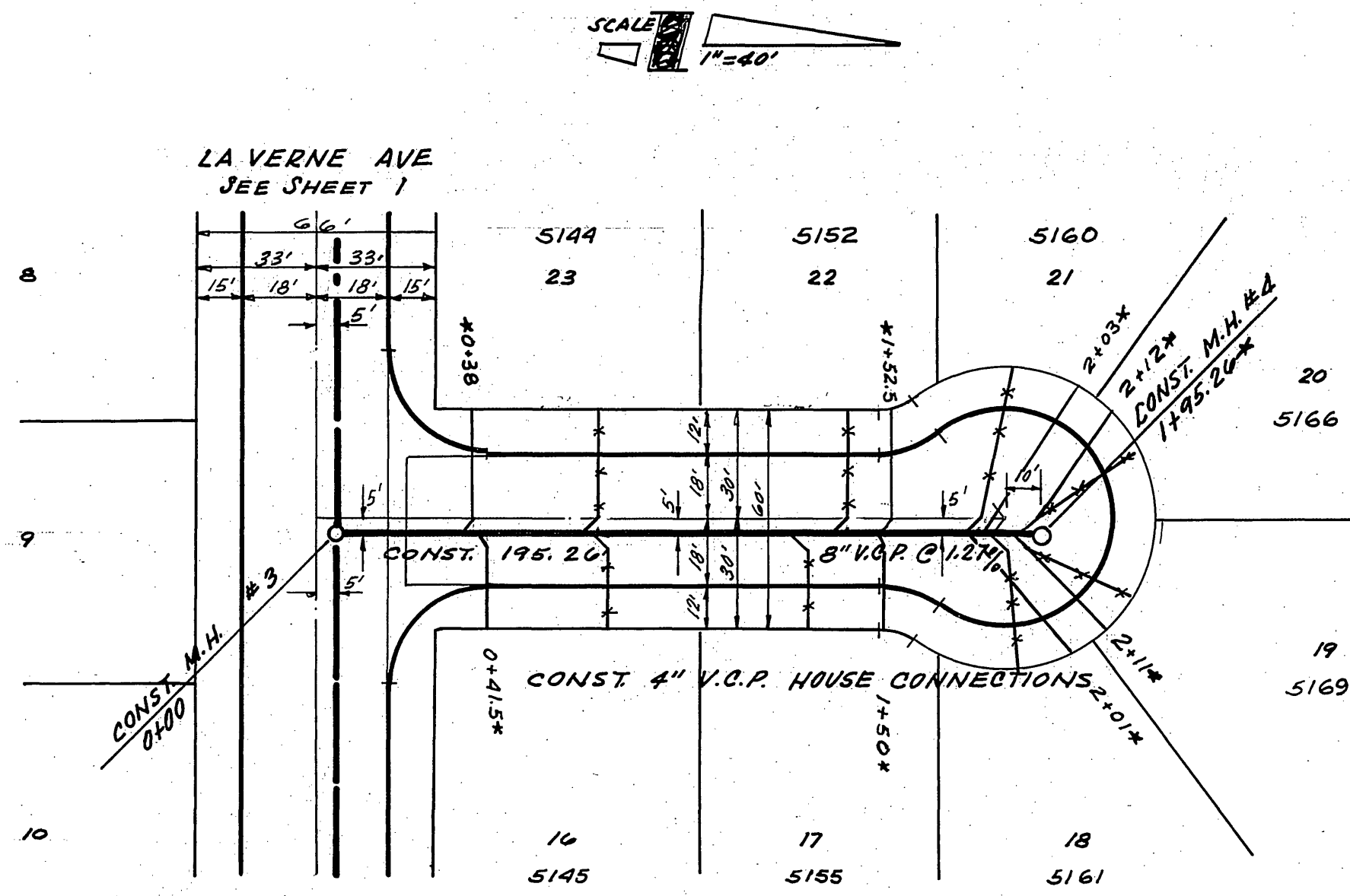
BM. ELEV. 788.253
 CHISELED "D" IN WESTERNLY CURB RETURN NORWOOD AVENUE AND SIERRA VISTA AVENUE. C/R - EB 706-20

REVISIONS		STAPLES ENGINEERING CO. INC. 12311 CHAPMAN AVE SUITE 117 GARDEN GROVE, CALIF. Clayton P. Staples, P.E. 11/16/64 PREPARED UNDER THE SUPERVISION OF CLP STAPLES	
MARK	DATE		
		CITY OF RIVERSIDE, CALIFORNIA DEPARTMENT OF PUBLIC WORKS	
		SEWER PLAN & PROFILE LA VERNE AVE. TRACT NO 2990	
DESIGNED BY	SUBMITTED BY	APPROVED BY	PROJ. NO.
DRAWN BY	PREPARED BY		
CHECKED BY			
		DATE	SHEET
		9-24-64	L.C. 3

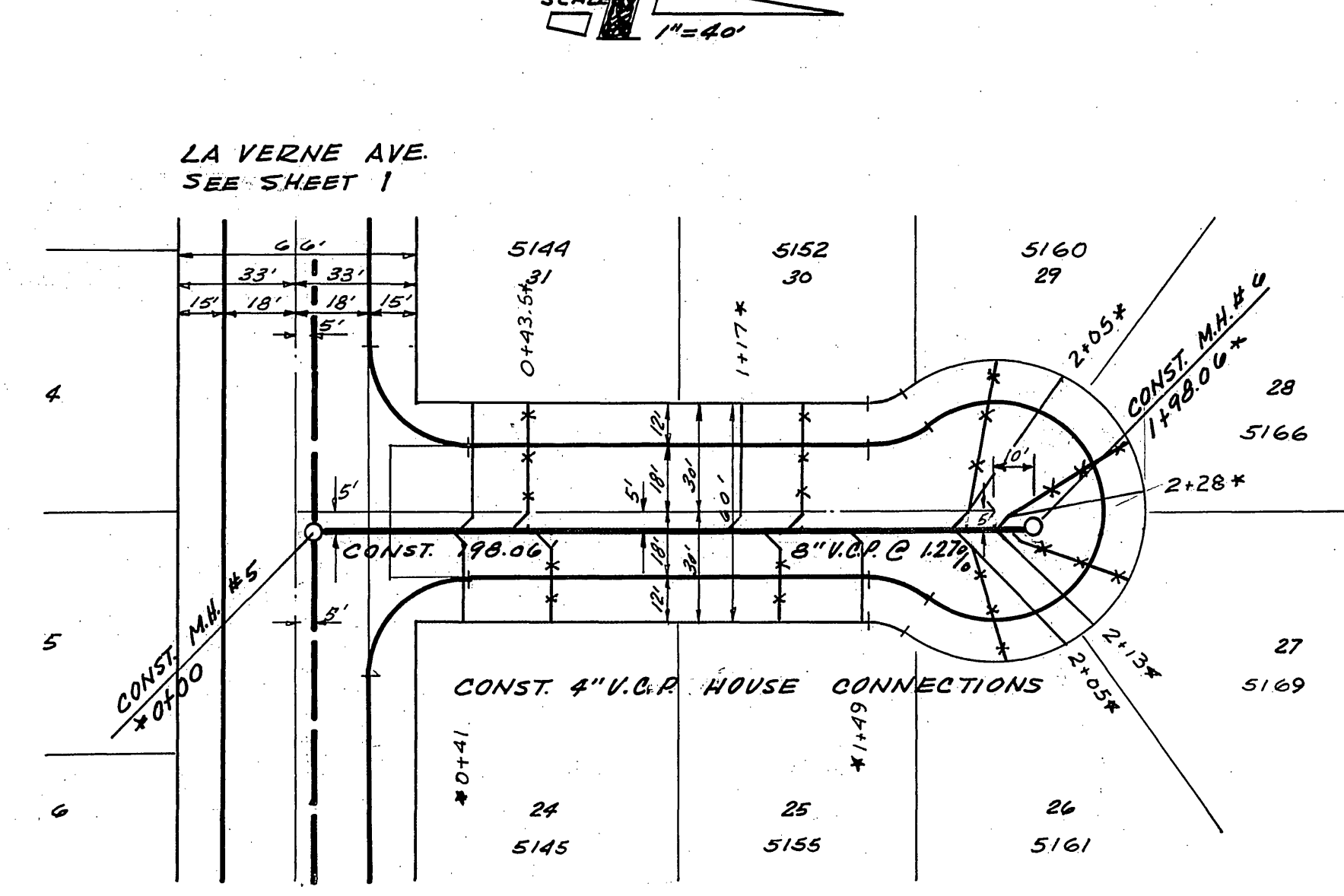
* As built 11/18/64 B.E.



CAROB WAY



CLUNY CIRCLE



HARRIETT CIRCLE

REVISIONS		
MARK	DATE	DESCRIPTION

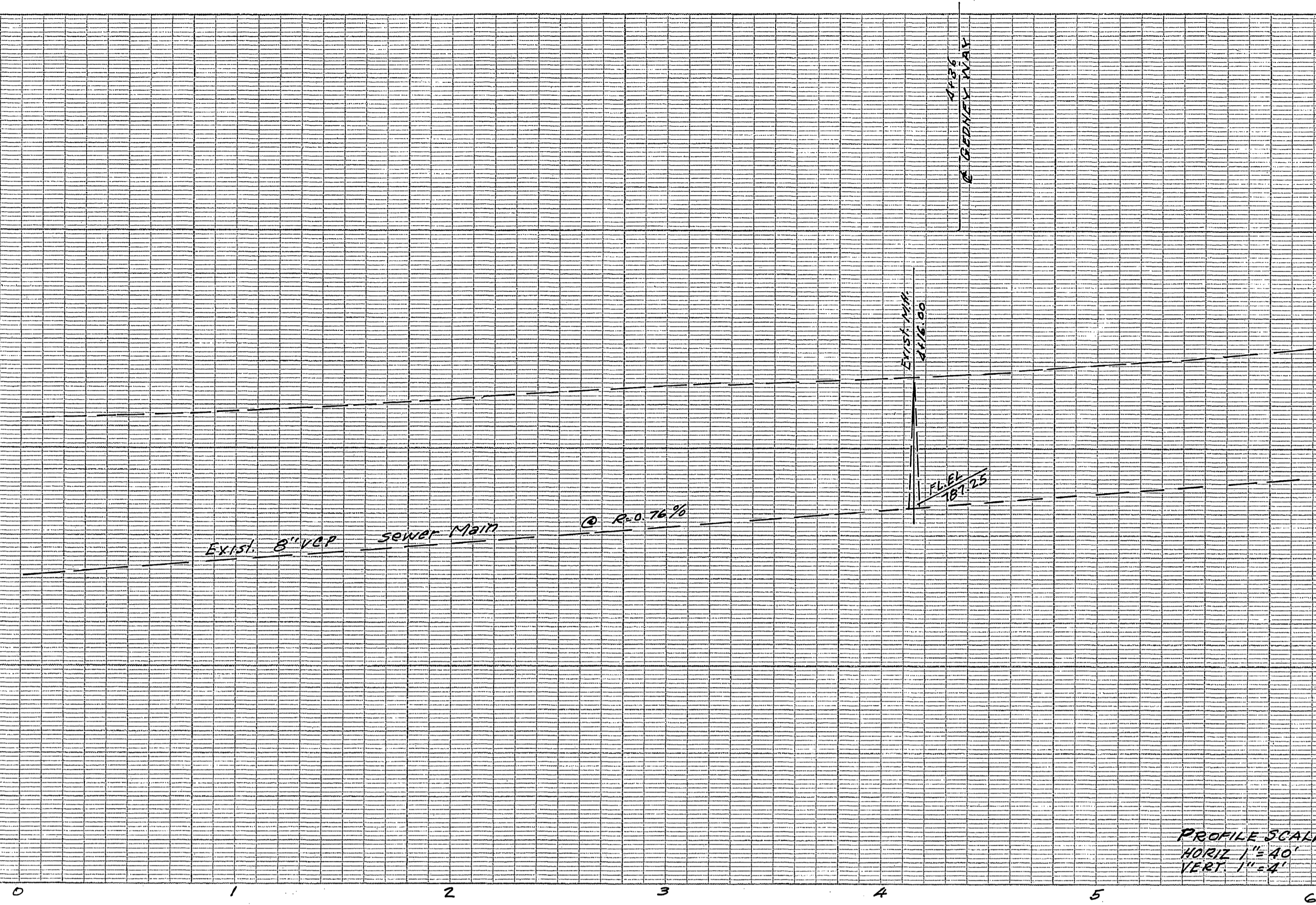
STAPLES ENGINEERING CO. INC.
 12311 CHAPMAN AVE. SUITE 117
 GARDEN GROVE, CALIF.
 Clayton P. Staples, P.C.E. 1165/1164
 PREPARED UNDER THE SUPERVISION OF C.P. STAPLES

CITY OF RIVERSIDE, CALIFORNIA
 DEPARTMENT OF PUBLIC WORKS

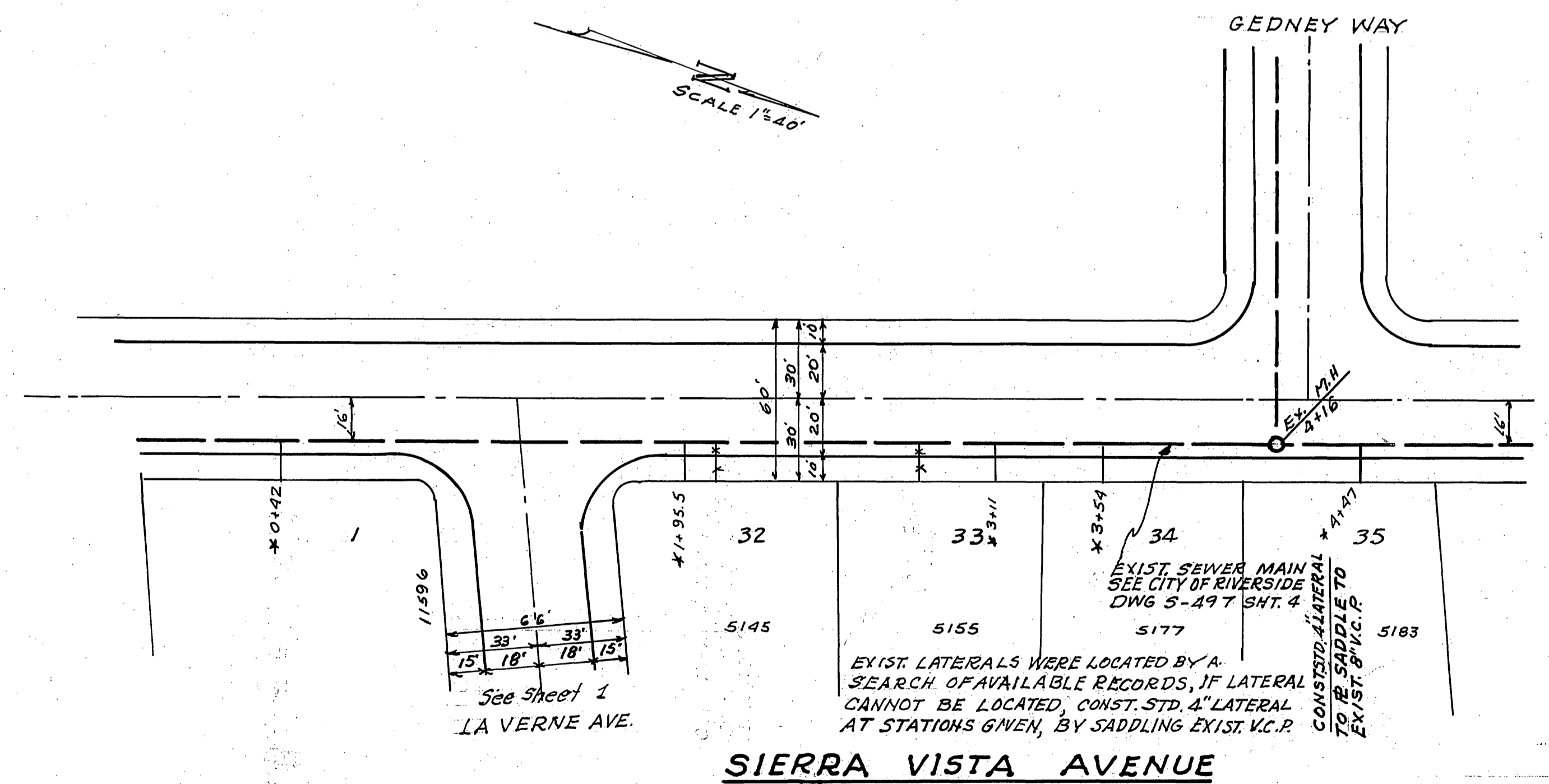
SEWER PLAN - PROFILE
 CAROB WAY - CLUNY CIRCLE - HARRIETT CIRCLE
 TRACT N° 2990

DESIGNED BY: William D. Hansen
 DRAWN BY: J.C.J.
 CHECKED BY: R.M.
 SUBMITTED BY: William D. Hansen
 PARK DEPT. TRAFFIC DIV.
 RECOMMENDED BY: [Signature]
 APPROVED BY: [Signature]
 PROJ. NO. S-569
 DATE: 9-24-64
 SHEET 2 OF 3

* As built 12/1/64 B.E.



PROFILE SCALE
 HORIZ. 1"=40'
 VERT. 1"=4'



SIERRA VISTA AVENUE

Construction Notes See PLAN R-210

EXIST. LATERALS WERE LOCATED BY A SEARCH OF AVAILABLE RECORDS, IF LATERAL CANNOT BE LOCATED, CONST. STD. 4" LATERAL AT STATIONS GIVEN, BY SADDLING EXIST. V.C.P.

EXIST. SEWER MAIN SEE CITY OF RIVERSIDE DWG S-497 SHT. 4

CONST. LATERAL TO BE SADDLED TO EXIST. P.V.C.P.

See Sheet 1 LA VERNE AVE.

STAPLES ENGINEERING CO. INC.
 12311 CHAPMAN AVE. SUITE 117
 GARDEN GROVE, CALIF.
 Clayton P. Staples, P.E. 1165 9/23/64
 PREPARED UNDER THE SUPERVISION OF C.P. STAPLES

REVISIONS		DESCRIPTION
MARK	DATE	
CITY OF RIVERSIDE, CALIFORNIA DEPARTMENT OF PUBLIC WORKS		
SEWER PLAN & PROFILE SIERRA VISTA AVE. TRACT NO 2990		
DESIGNED BY	SUBMITTED BY	APPROVED BY
	William D. Hanson	Clayton P. Staples
DRAWN BY	PARK DEPT.	TRAFFIC DIV.
CHECKED BY	RECOMMENDED BY	DATE
Ron		9-24-64

S-569
 SHEET 3 OF 3

* As built 12/7/64