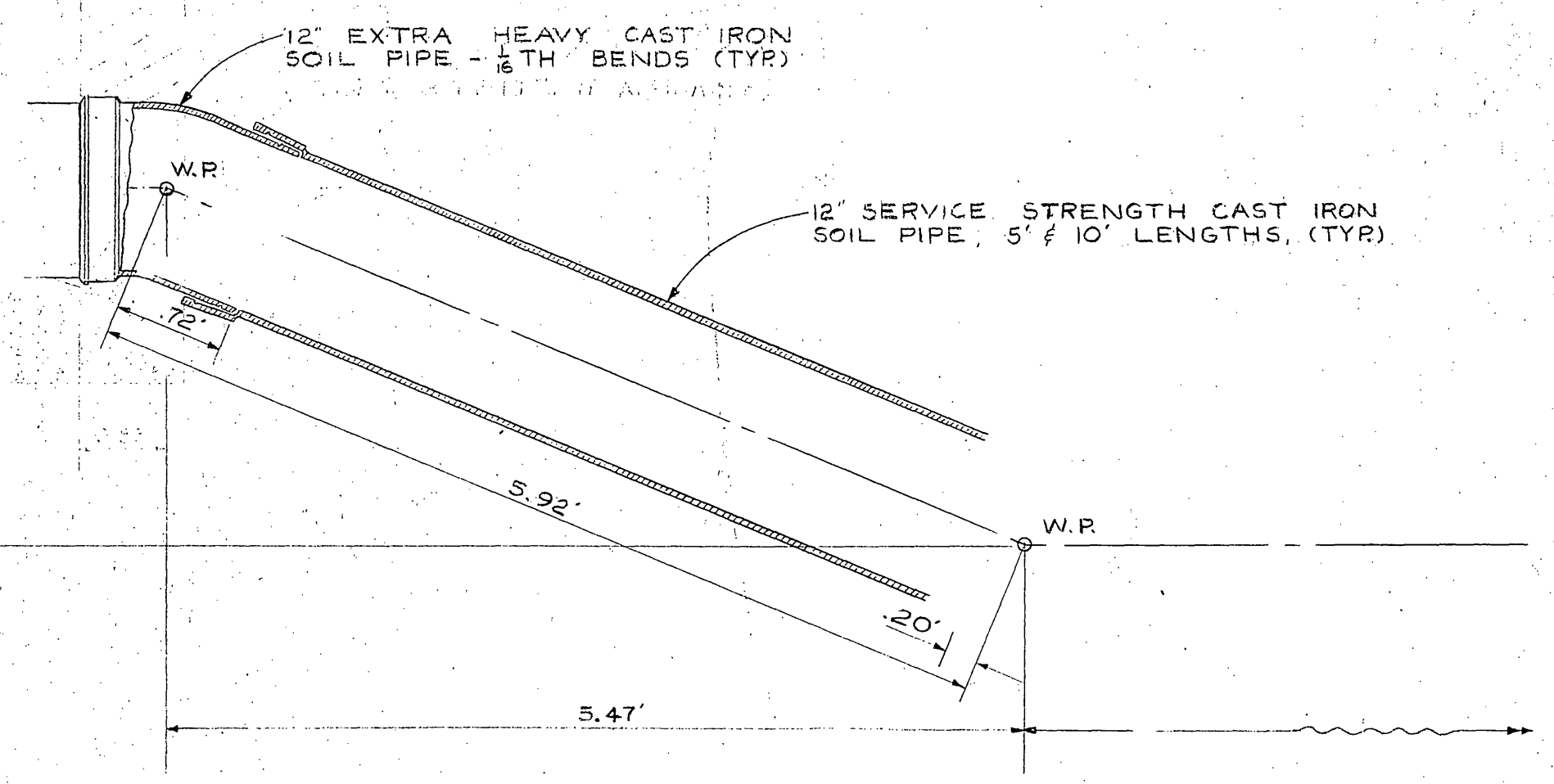


**SECTION - A - A**  
HORIZONTAL - 1" = 5'  
VERTICAL - 1" = 5'

**BENCH MARK**  
ELEV. 771.47 - SPK. # LD IN  
NW CURB RETURN OF  
CALIFORNIA AVE. AND  
JEFFERSON STREET.



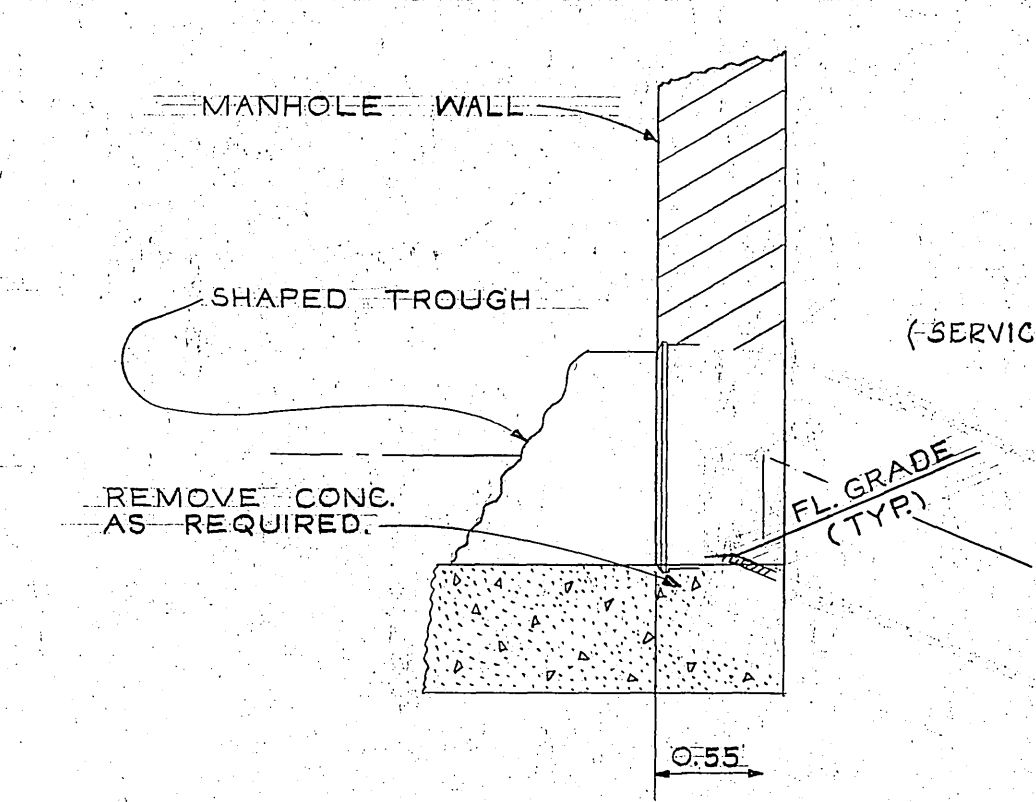
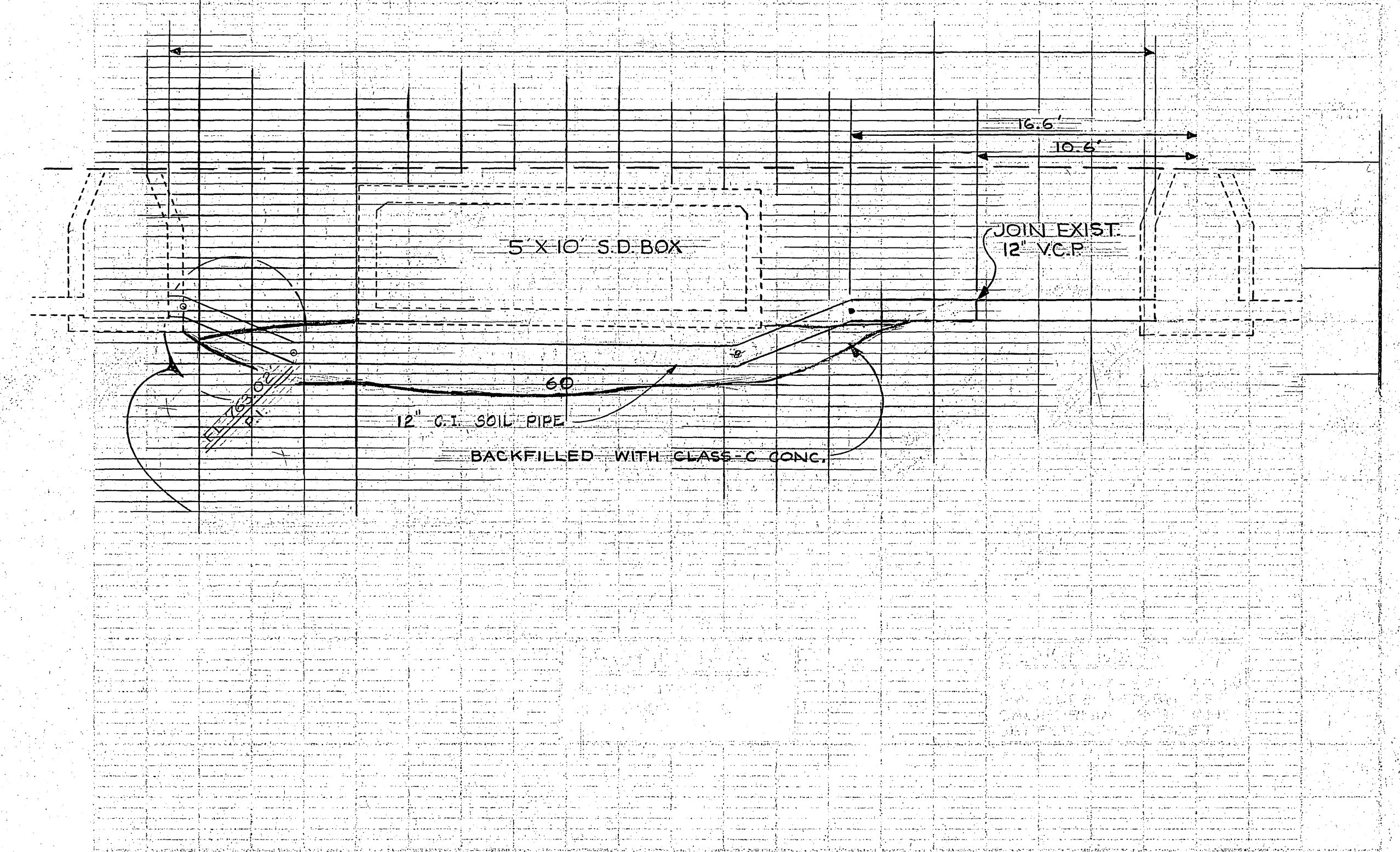
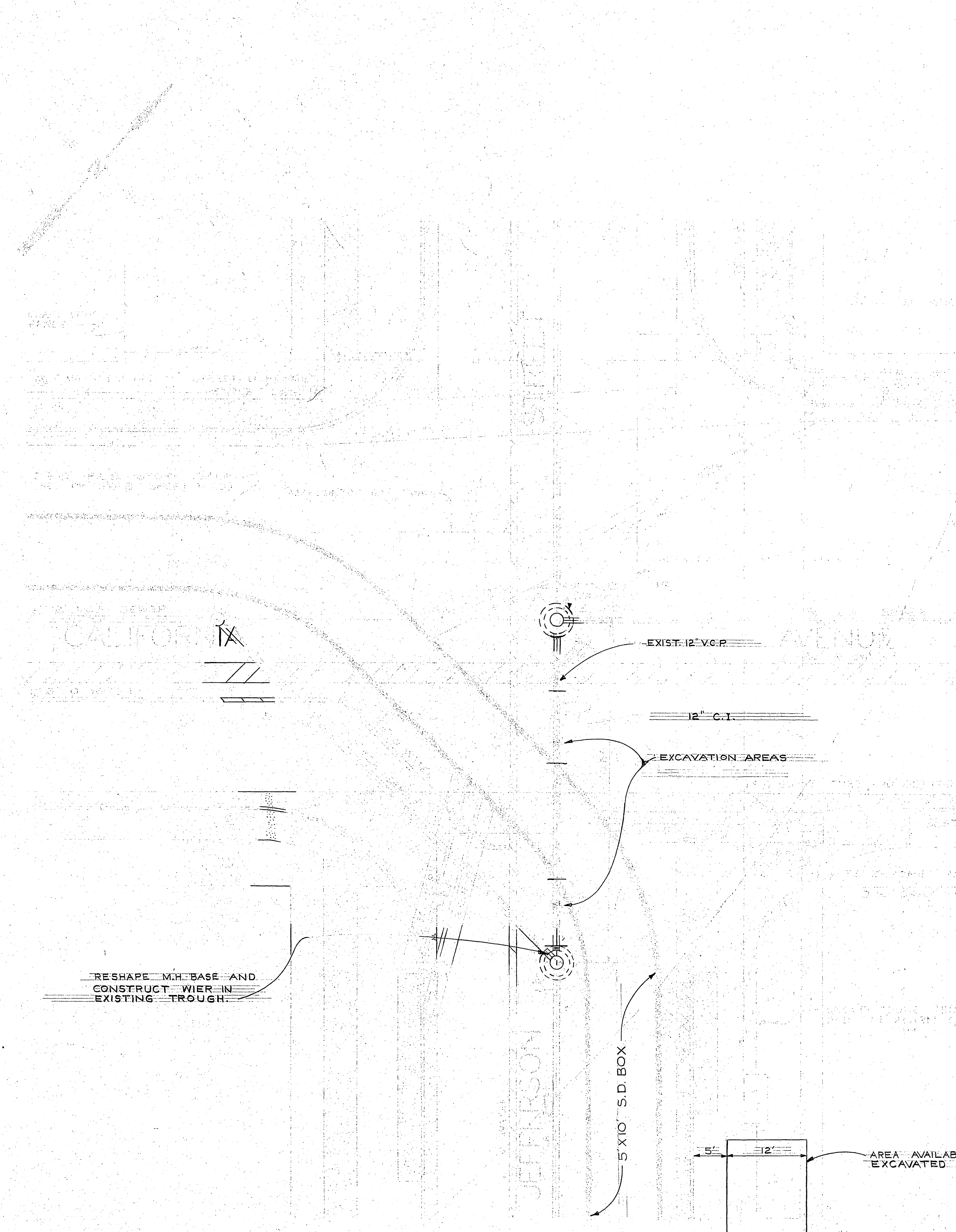
**DETAIL**  
SCALE - 1" = 1'

PROFILE	
NO.	DATE
BY	DATE

PLAN	
NO.	DATE
BY	DATE

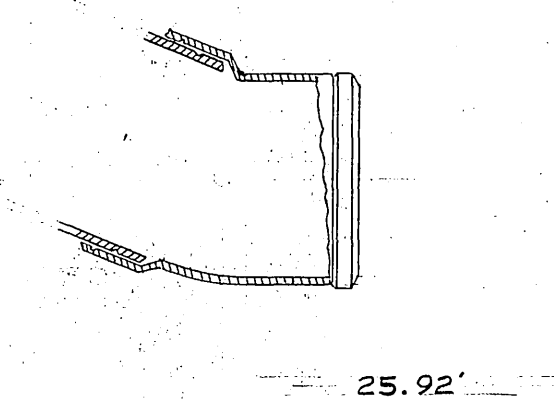
<b>REVISIONS</b> <table border="1"> <thead> <tr> <th>MARK</th> <th>DATE</th> <th>DESCRIPTION</th> </tr> </thead> <tbody> <tr> <td> </td> <td> </td> <td> </td> </tr> </tbody> </table>		MARK	DATE	DESCRIPTION				CITY OF RIVERSIDE, CALIFORNIA DEPARTMENT OF PUBLIC WORKS  CALIFORNIA TRUNK SEWER RELIEF  SIPHON ON JEFFERSON ST.	
MARK	DATE	DESCRIPTION							
DESIGNED BY	SUBMITTED BY	APPROVED BY	PROJ. NO. 5063						
DRAWN BY	PARK DEPT. TRAFFIC DIV.	DIRECTOR OF PUBLIC WORKS	S-571						
CHECKED BY	RECOMMENDED BY	DATE	SHEET 1 OF 1						





THICKNESS OF EXISTING PAVEMENT  
IN THIS VICINITY IS 8"

DOWNSTREAM END OF SIPHON SIMILAR



RESHAPE M.H. BASE AND  
CONSTRUCT WIER IN  
EXISTING TROUGH.

AREA AVAILABLE FOR STOCKPILING  
EXCAVATED MATERIAL.

AS BUILT  
MARCH 17, 1965

*BC Harris*

CITY OF SAN DIEGO  
DEPARTMENT OF PUBLIC WORKS  
CALIFORNIA TRUNK  
SEWER RELIEF  
SIPHON ON INTERSECTION ST.

APPROVED  
SEWER MAINTENANCE

*G.E. Robertson*  
*Michael*  
1-25-65  
S-571  
1 OF 1