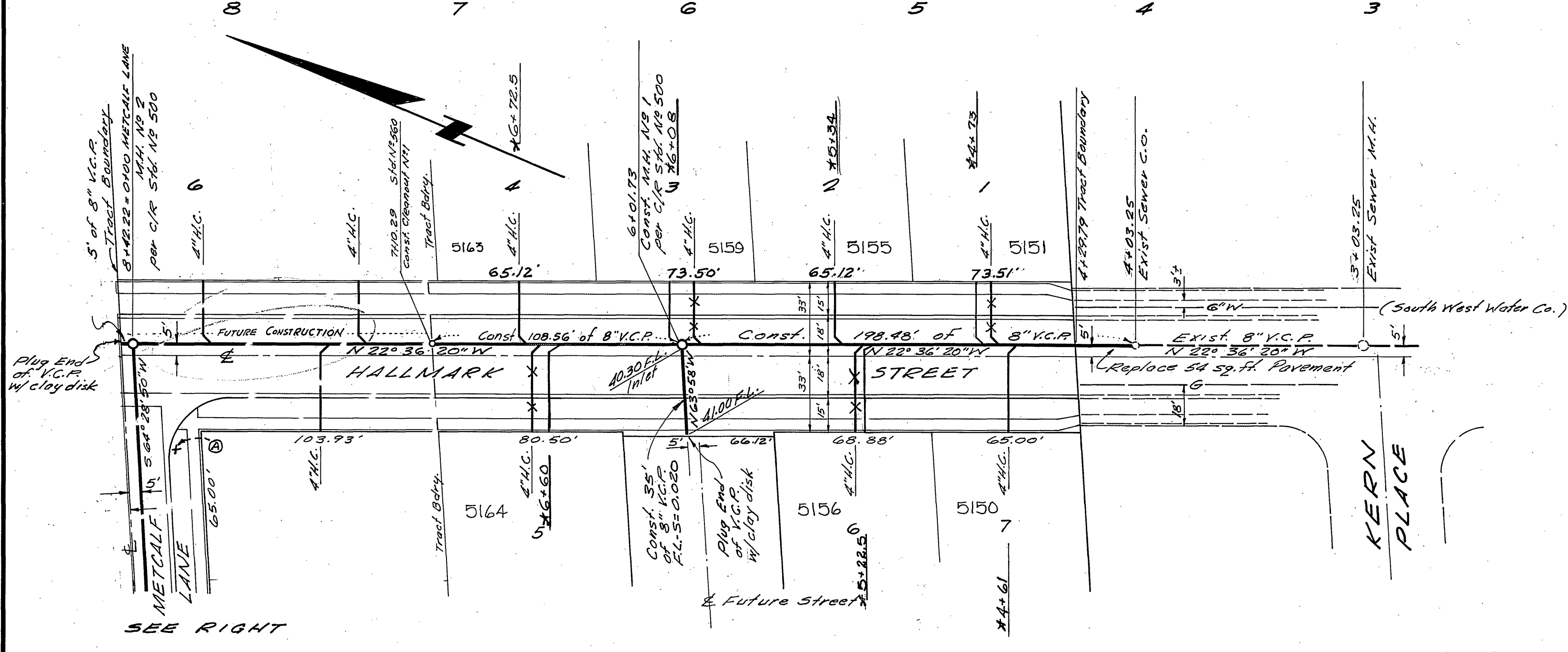
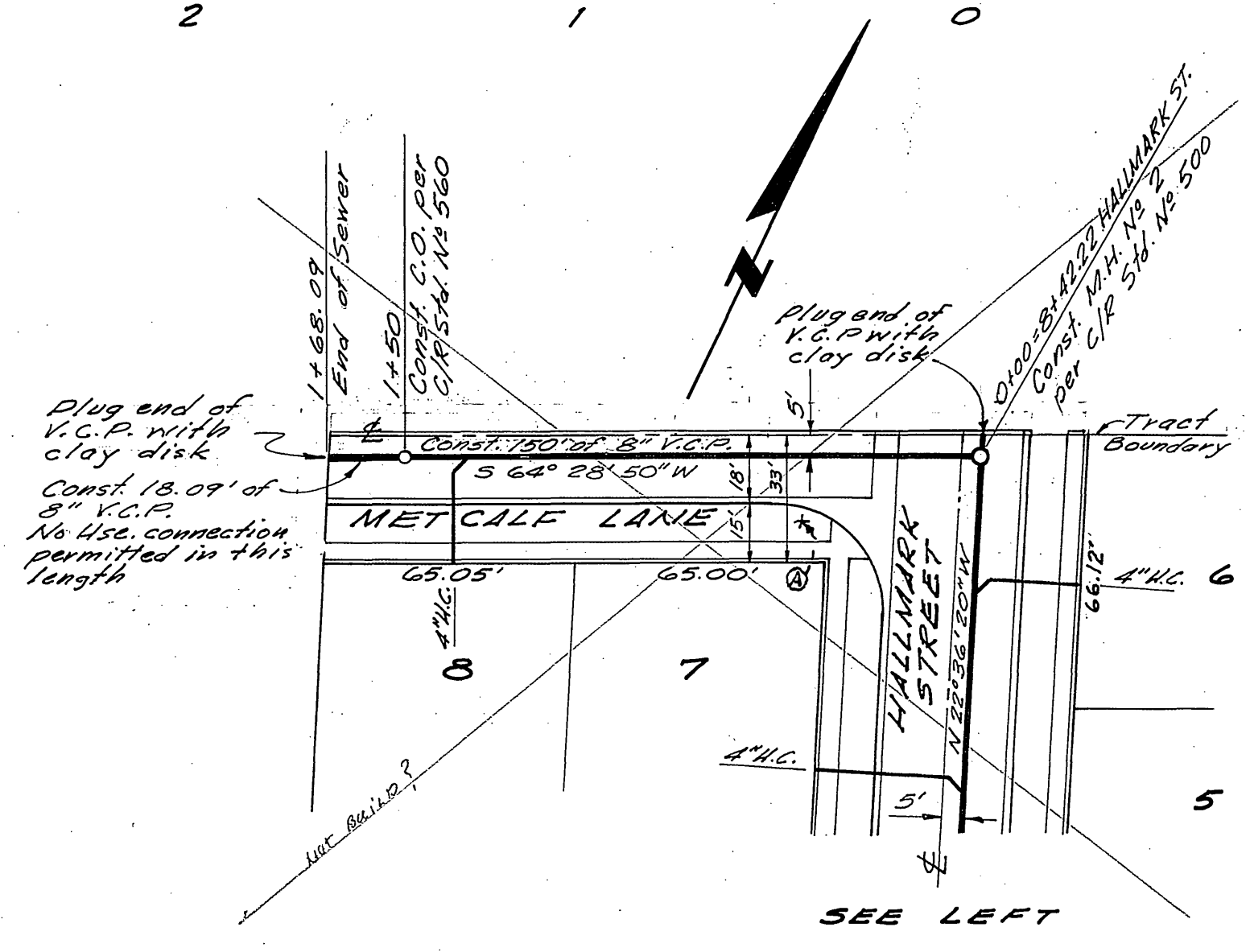


PROFILES
Scale: Horiz. 1" = 40'
Vert. 1" = 4'



PLAN
Scale: 1" = 40'



PLAN
Scale: 1" = 40'

GENERAL NOTES

1. Construction shall be in accordance with the City of Riverside Department of Public Works, Std. Specifications No. 461 and Standard Drawings.
2. It shall be the responsibility of the contractor to clear the right of way in accordance with the provisions of the law as it affects each utility including irrigation lines and appurtenances, and of no cost to the City.
3. Joints in vitrified clay pipe sewers shall conform to A.S.T.M. Std. C-425-60T, or the latest revision thereof.
4. Pipe shall be bedded per Case II, Std. Dwg. No. 452, unless otherwise specified on plan.
5. Location of wyes and laterals to be determined in field.
6. All stubs and laterals to be constructed in accordance with Std. Dwg. No. 562. Stubs shall be plugged & capped.

B.M. - Top of curb, North end of curb, return at the N.W. corner of Hallmark St. and Kern Place, taken from street plans Woodward Estates, C/P Plan R.B.II. E1. 745.20

CRAWLEY & HAWKINS
SURVEYORS AND ENGINEERS
Riverside, California
Approved: *George O. Crawley* Date: 6-18-67
P.E. No. 0455

REVISIONS			CITY OF RIVERSIDE, CALIFORNIA DEPARTMENT OF PUBLIC WORKS	
MARK	DATE	DESCRIPTION		
*	1-19-65	As Built - J.L.		

DESIGNED BY	SUBMITTED BY	APPROVED BY	PROJ. NO.
DRAWN BY	PARK DEPT.	TRAFFIC DIV.	5-573
CHECKED BY	RECOMMENDED BY	DATE	SHEET 1 OF 1
Bd. S. #	<i>J. J. ...</i>	1-4-64	