

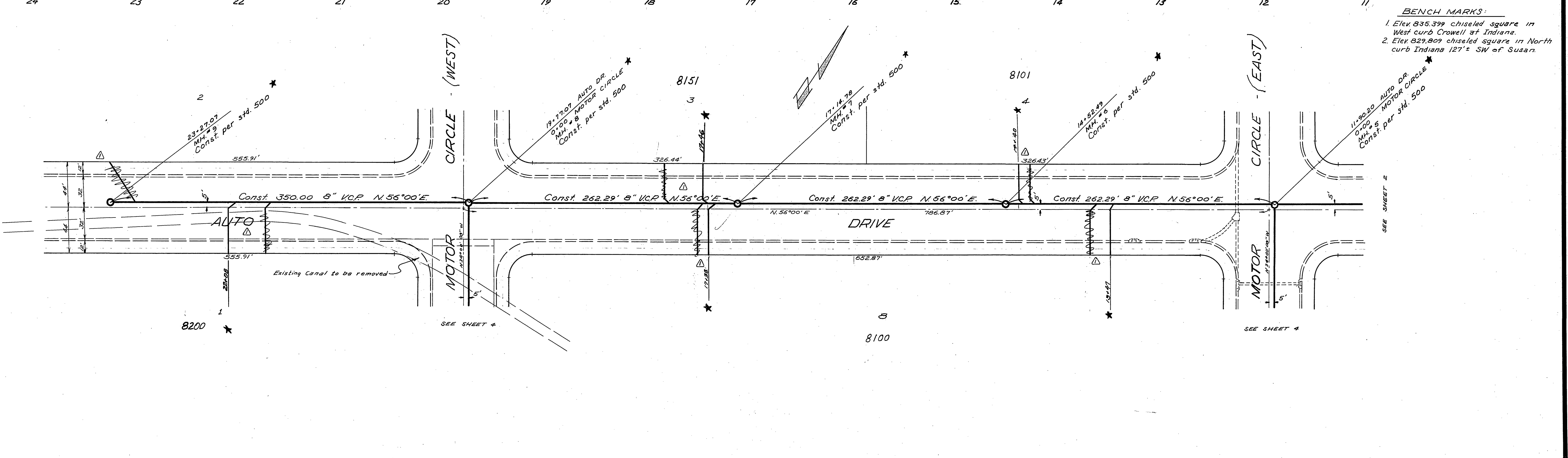
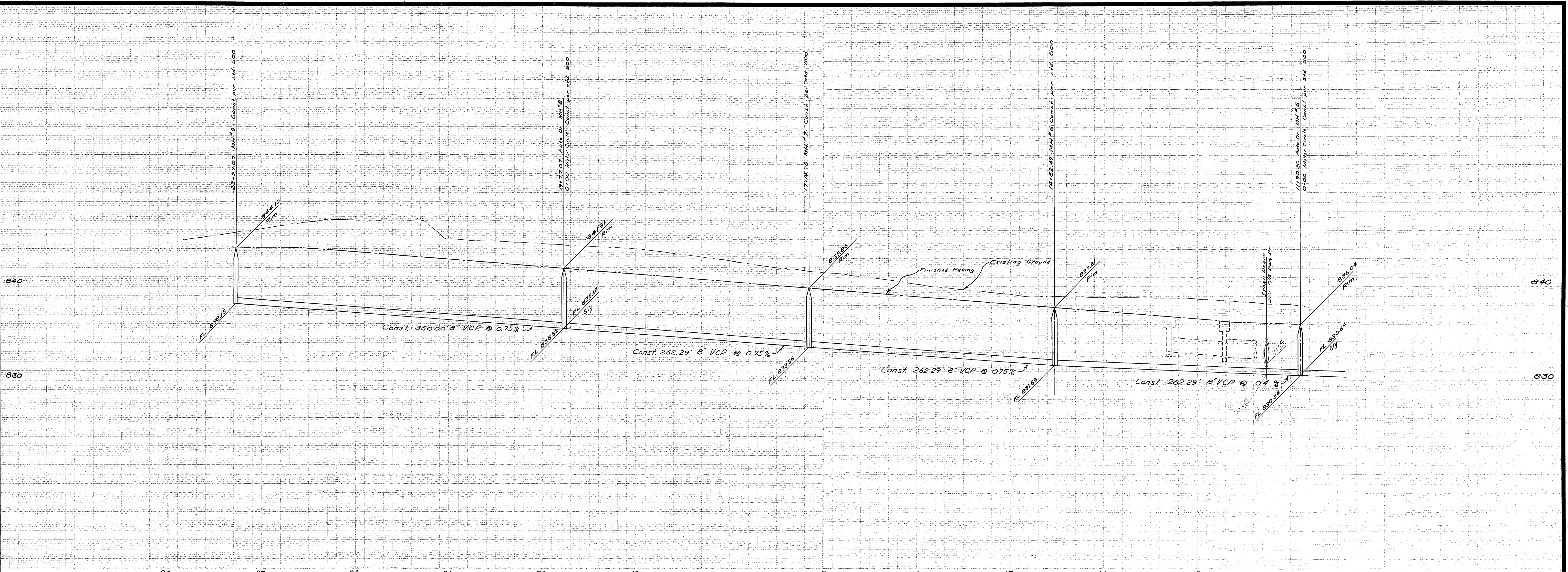
- GENERAL NOTES**
- Construction shall be in accordance with the City of Riverside, Department of Public Works, Standard Specifications No. 461 and Standard Drawings.
 - It shall be the responsibility of the contractor to clear the right of way in accordance with the provisions of the law as it affects each utility including irrigation lines and appurtenances and at no cost to the city.
 - Joints in vitrified clay pipe sewers shall conform to ASTM Standard C-425-607, or the latest revision thereof.
 - Pipe shall be bedded per Case II, Standard Drawing No. 462, unless otherwise specified on plan.
 - Location of wyes and laterals to be determined in the field.
 - NOTICE TO CONTRACTOR:** The existence and location of any underground utility pipes or structures shown on these plans are obtained by a search of the available records. To the best of our knowledge, there are no existing utilities, except as shown on these plans. The Contractor is required to take due precautionary measures to protect the utility lines shown and any other lines not of record or not shown on these plans.

QUANTITY ESTIMATE

△ 8" Vitrified Clay Pipe	3,352	LF
4" Vitrified Clay Pipe	724	LF
△ Manholes Std. No. 500	13	Ea.
4"x8" wyes	15	Ea.
Pavement replace	1,200	SF
△ 8" C.I. Pipe	25	LF

- BENCH MARKS**
- Ele. 835.399 Chiseled square in West curb Crowell at Indiana.
 - Ele. 829.809 Chiseled square in North curb Indiana 127' S.W. of Susan.

ALBERT A. WEBB ASSOCIATES CIVIL ENGINEERS RIVERSIDE, CALIFORNIA APPROVED BY: <i>Albert A. Webb</i> DATE: 8/14/64 R.E. No. 3226	CITY OF RIVERSIDE, CALIFORNIA DEPARTMENT OF PUBLIC WORKS		SEWER PLAN & PROFILE INDEX SHEET TRACT No. 2876		PROJECT NO. S-576
	E.N.D. REV. QUANTITY 16. ADD 11#13 & 8" C.I. PIPE MARK REVISIONS APRR DATE 12/21/64	APPROVED BY: <i>[Signature]</i> BY: DATE: 10-15-64 OFFICE ENGINEER PARK DEPARTMENT TRAFFIC DIVISION ASSISTANT CITY ENG.	APPROVED BY: <i>[Signature]</i> BY: DATE: 10-15-64 DIRECTOR OF PUBLIC WORKS	HORIZ. SCALE: 1" = 40' VERT. SCALE: 1" = 4'	



BENCH MARKS:
 1. Elev. 835.399 chiseled square in West curb Crowell at Indiana.
 2. Elev. 829.809 chiseled square in North curb Indiana 127' SW of Susan.

★ AS BUILT 4-21-65 HB

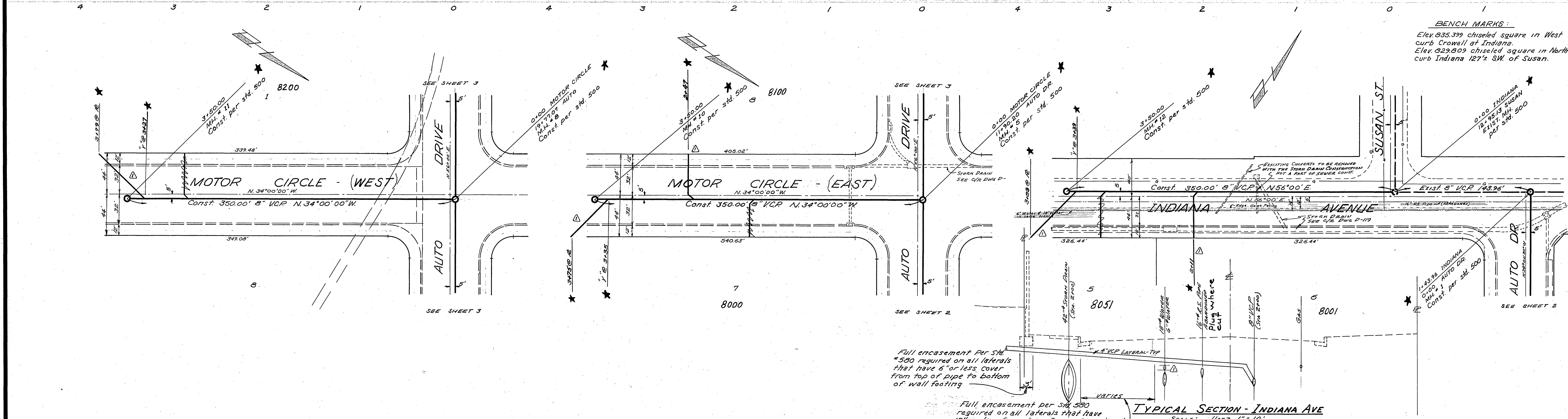
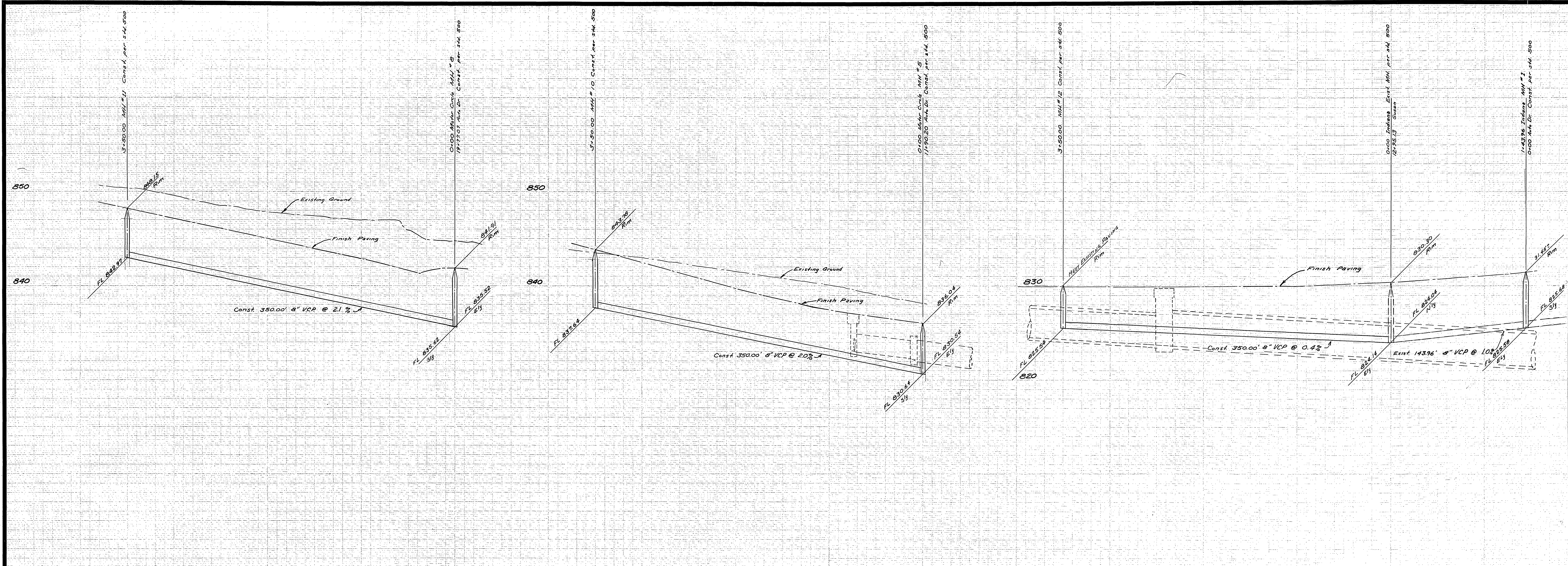
ALBERT A. WEBB ASSOCIATES
 CIVIL ENGINEERS
 RIVERSIDE, CALIFORNIA
 APPROVED BY *[Signature]* DATE 8/17/64
 R.E. No. 2876

ENLW	ADD LATERAL LOCATIONS	12-3-64
MARK	REVISIONS	APPR. DATE
DESIGNED BY	DRAWN BY RB	CHECKED BY [Signature]

CITY OF RIVERSIDE, CALIFORNIA
 DEPARTMENT OF PUBLIC WORKS
 APPROVED BY *[Signature]* BY DATE
 OFFICE ENGINEER
 PARK DEPARTMENT
 TRAFFIC DIVISION
 ASSISTANT CITY ENG.

SEWER PLAN & PROFILE
 AUTO DRIVE Sta. 11+90.20 to 23+27.07
 Between Motor Circle -
 East & Adams Street
 TRACT No. 2876
 HORIZ. SCALE: 1" = 50' VERT. SCALE: 1" = 5'

PROJECT NO.
S-576
 SHEET 3 OF 5
 FILE NO. 63-233-B



BENCH MARKS:
 Elev. 835.379 chiseled square in West curb Crowell at Indiana.
 Elev. 829.809 chiseled square in North curb Indiana 127' SW of Susan.

ALBERT A. WEBB ASSOCIATES CIVIL ENGINEERS RIVERSIDE, CALIFORNIA APPROVED BY: <i>[Signature]</i> DATE: 5/17/64 R.E. No. 2876		CITY OF RIVERSIDE, CALIFORNIA DEPARTMENT OF PUBLIC WORKS APPROVED BY: <i>[Signature]</i> DATE: 10-15-64 DIRECTOR OF PUBLIC WORKS		PROJECT NO. S-576 SHEET 4 OF 5
W.O. 63-233 FOR:		DESIGNED BY: <i>[Signature]</i> DRAWN BY: <i>[Signature]</i> CHECKED BY: <i>[Signature]</i>		FILE NO. 63-233-B

★ AS BUILT 5-4-65 HB

