

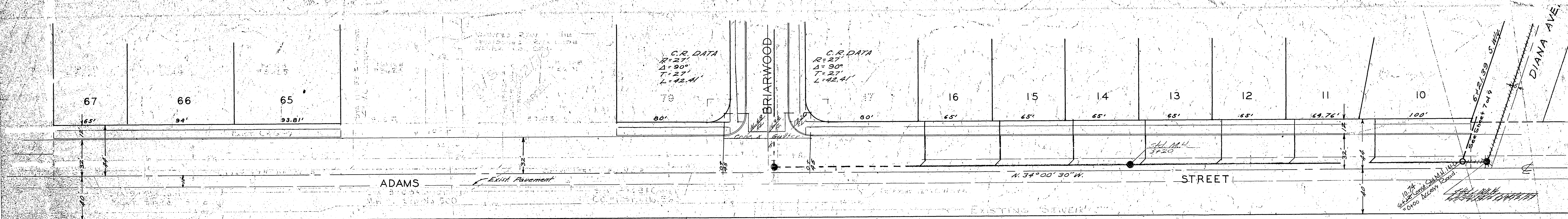
B.M. - PK. IN LEAD @ B.C. OF CURB RETURN @ SOUTH EAST CORNER OF ADAMS & MAGNOLIA ELEV. 798.614 FB. B-1/7

THIS PLAN ADAPTED FROM C/R PLAN No. R-5

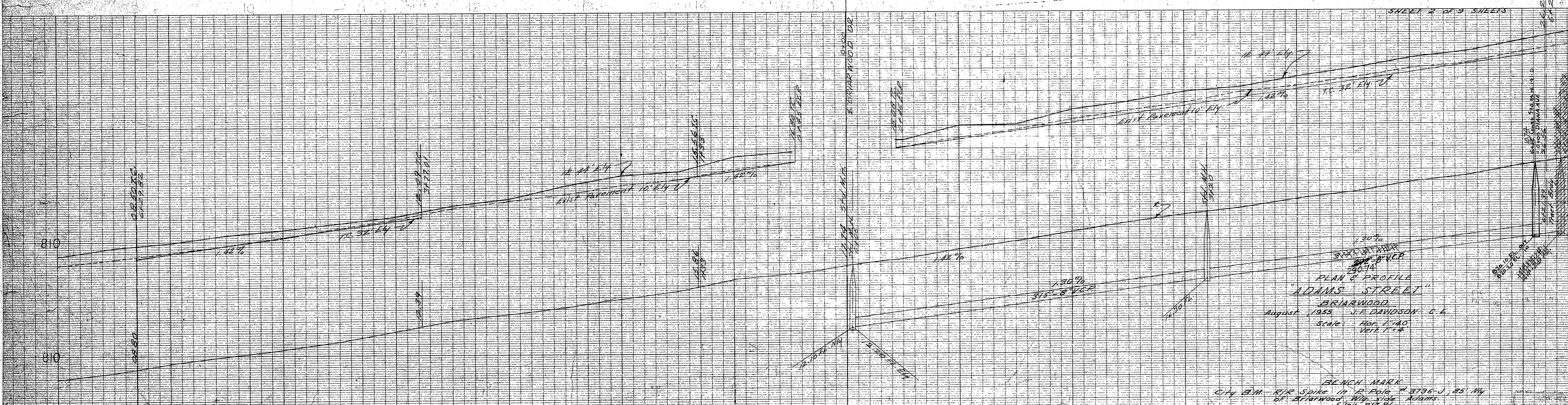
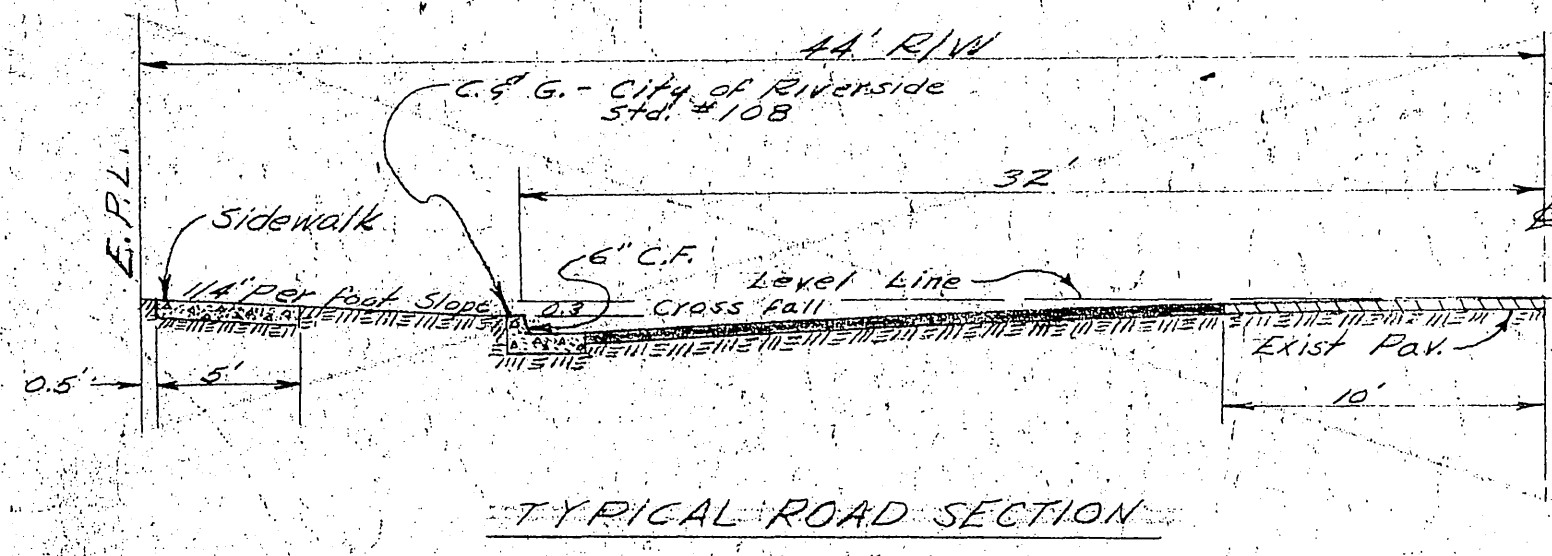
ADAMS STREET SEWER
 BETWEEN MAGNOLA AVENUE
 AND BRIARWOOD DRIVE
 STA. 9+33 TO STA. 14+63

5069
 S-579
 10-15-64
 3 3

* AS BUILT 12/1/64 BE



ENGINEERS' NOTE
Contractor shall grade gutter between Station 1433 and Station 3+710.



REVISIONS			CITY OF RIVERSIDE, CALIFORNIA DEPARTMENT OF PUBLIC WORKS	
MARK	DATE	DESCRIPTION		
			ADAMS STREET SEWER BETWEEN MAGNOLA AVENUE AND BRIARWOOD DRIVE	
			STA. 1433	TO STA. 1440
DESIGNED BY	SUBMITTED BY	APPROVED BY	PROJ. NO.	
DRAWN BY	PARK DEPT. TRAFFIC DIV.	DIRECTOR OF PUBLIC WORKS	S 579	
CHECKED BY	RECOMMENDED BY	DATE	SHEET 1 OF 1	