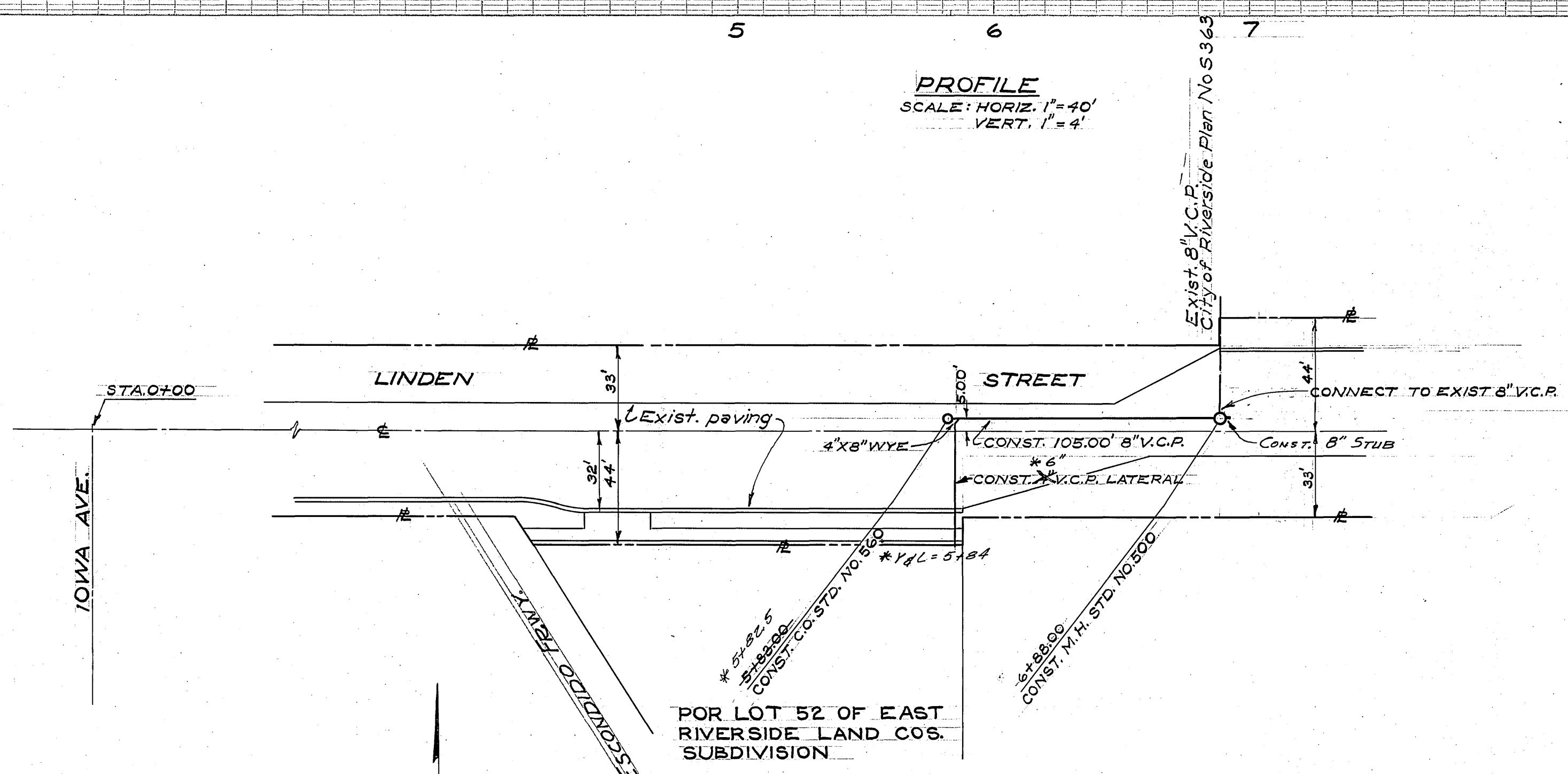


NOTE
 Contractor shall verify elev. of
 exist. 8" sewer in field prior to
 construction.

5 6 7

PROFILE
 SCALE: HORIZ. 1"=40'
 VERT. 1"=4'



PLAN
 SCALE: 1"=40'

BENCH MARK
 P.K. Neil in curb return, N.E. corner of
 Iowa Ave. & Linden St. Elev. 993.757

GENERAL NOTES

1. It shall be the responsibility of the contractor to clear the right of way in accordance with the provisions of law as it affects each utility including irrigation lines and appurtenances and at no cost to the City.
2. Construction shall be in accordance with the City of Riverside, Department of Public Works, Specifications No. 461 and Standard Drawings.
3. Joints in vitrified clay pipe sewers shall conform to ASTM Standard C-425-60T, or the latest revision thereof.
4. Pipe shall be bedded per Case II, Standard Drawing No. 452, unless otherwise specified on plan.

* As built 2-16-88 TLE

PREPARED UNDER THE SUPERVISION OF
 PAUL H. WINTER R.E. 7658
 Paul Winter DATE: 4-64

REVISIONS		
MARK	DATE	DESCRIPTION

CITY OF RIVERSIDE, CALIFORNIA
 DEPARTMENT OF PUBLIC WORKS

SEWER PLAN & PROFILE
 LINDEN STREET
 500± TO 600± ELY. OF
 IOWA AVENUE

DESIGNED BY: William D. Gardner
 DRAWN BY: [Signature]
 CHECKED BY: [Signature]
 A.W. #: [Blank] P.R. School 4-12-65

S-583