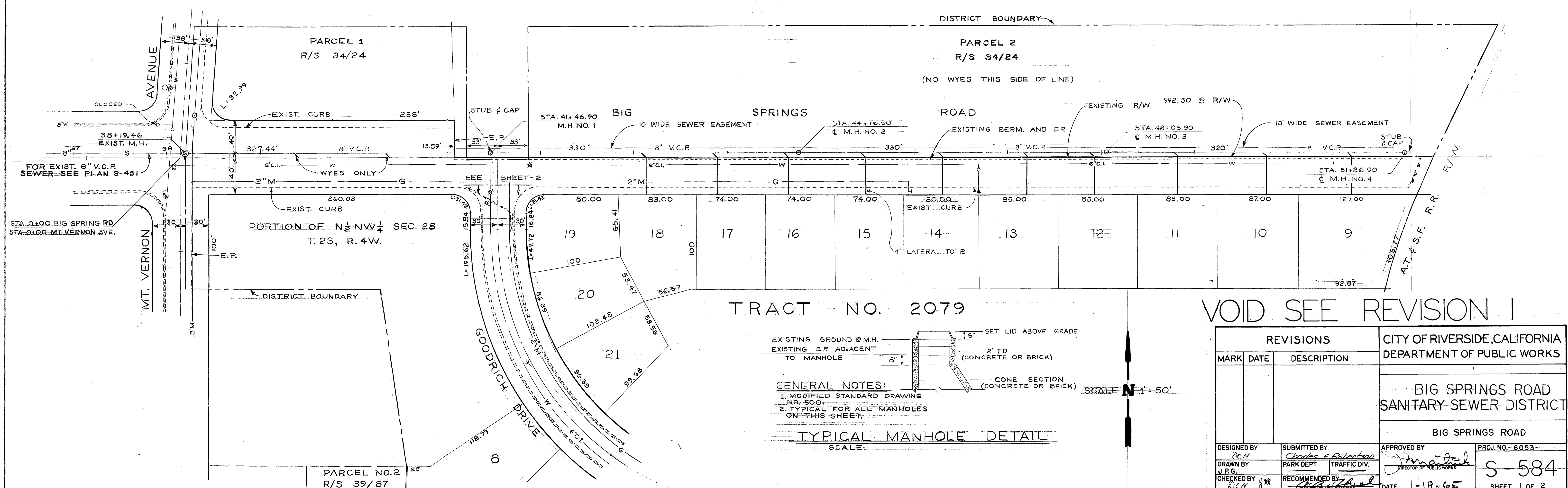
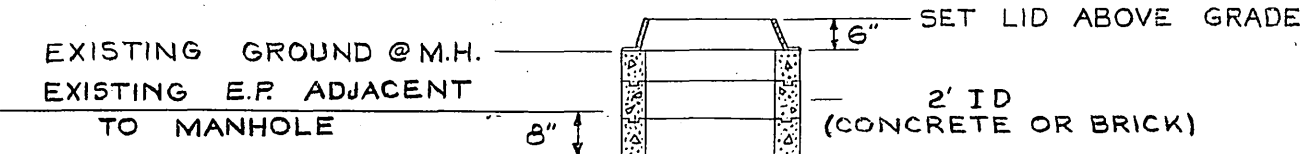


B.M. ELEV. 1140.491 PK. NAIL IN SE CURB  
 RETURN, GOODRICH DR. & BIG SPRINGS RD.  
 F.B. 5-9-36  
 SCALE HOR. 1"=50'  
 VERT. 1"=10'

PROFILE	
DESIGNED BY	BY
PLOTTED	DATE
GRADES CHECKED	
B.M. NOTED	
STATIONING CHECKED	



TRACT NO. 2079



GENERAL NOTES:  
 1. MODIFIED STANDARD DRAWING NO. 500.  
 2. TYPICAL FOR ALL MANHOLES ON THIS SHEET.

TYPICAL MANHOLE DETAIL  
 SCALE

VOID SEE REVISION 1

REVISIONS	
MARK	DATE

CITY OF RIVERSIDE, CALIFORNIA  
 DEPARTMENT OF PUBLIC WORKS

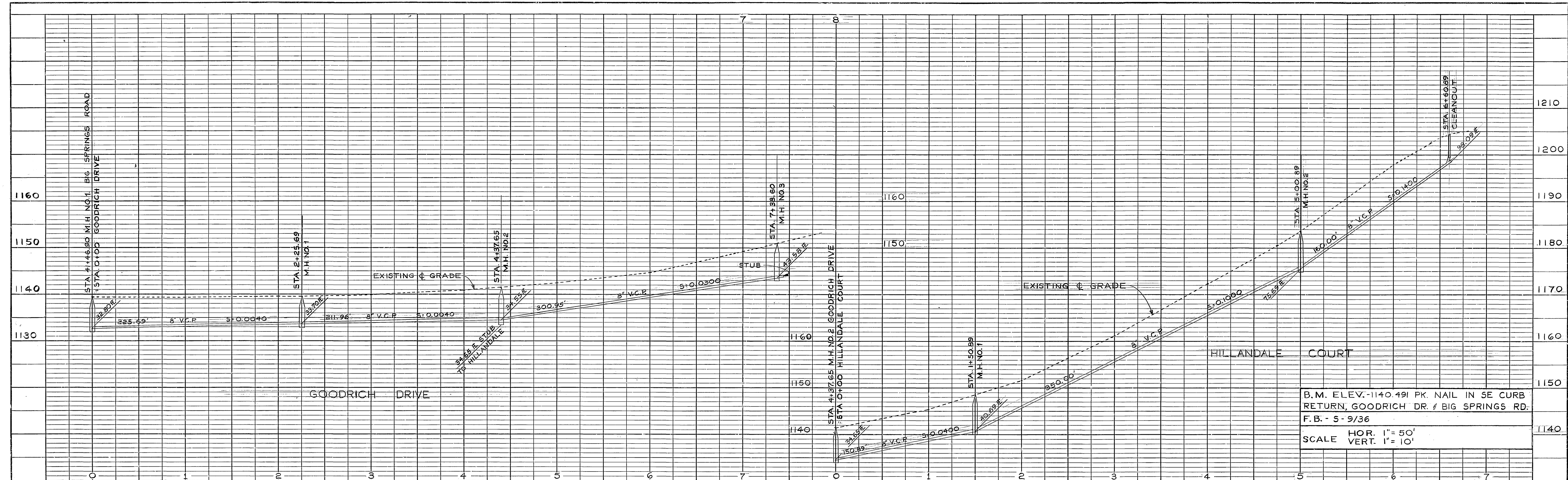
BIG SPRINGS ROAD  
 SANITARY SEWER DISTRICT

BIG SPRINGS ROAD

DESIGNED BY RCH	SUBMITTED BY Charles E. Robertson	APPROVED BY <i>[Signature]</i>	PROJ. NO. 6053-
DRAWN BY J.P.G.	PARK DEPT. TRAFFIC DIV.	DIRECTOR OF PUBLIC WORKS	S-584
CHECKED BY RCH	RECOMMENDED BY <i>[Signature]</i>	DATE 1-19-65	SHEET 1 OF 2

PLAN	
DESIGNED BY	BY
PLOTTED	DATE
ALIGNMENT CHECKED	
R.T. OF WAY CHECKED	

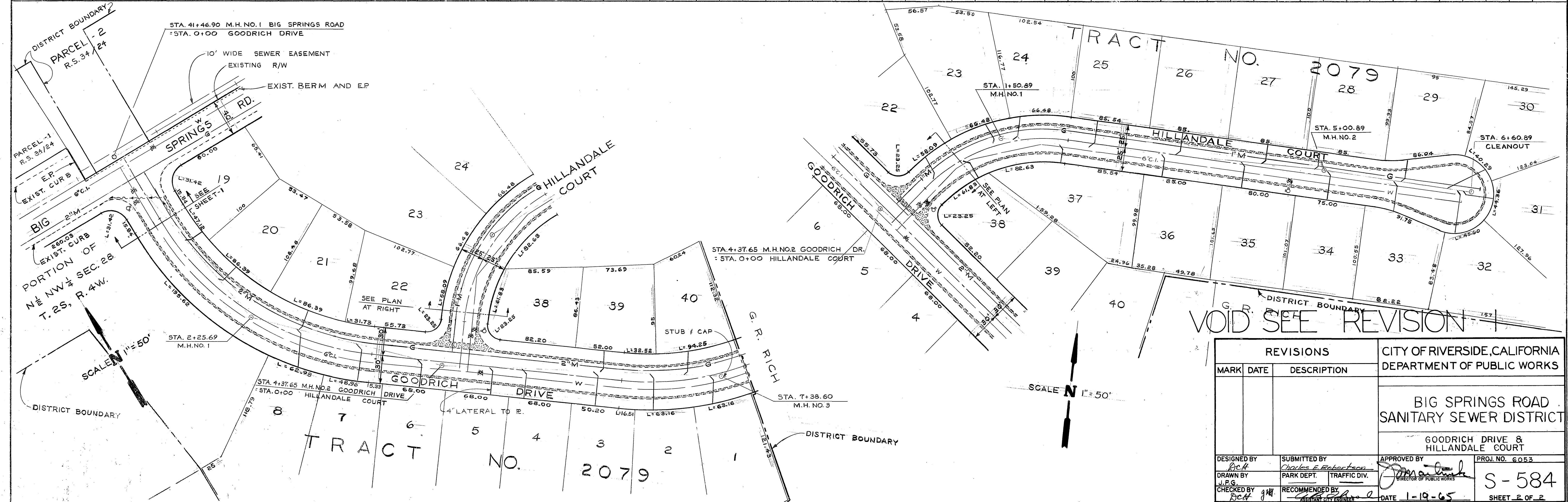




B.M. ELEV. -1140.491 PK. NAIL IN SE CURB RETURN, GOODRICH DR. & BIG SPRINGS RD.  
 F.B. - 5-9/36  
 SCALE HOR. 1" = 50'  
 VERT. 1" = 10'

**PROFILE**

NO.	DATE



**PLAN**

NO.	DATE

<b>REVISIONS</b> MARK DATE DESCRIPTION		CITY OF RIVERSIDE, CALIFORNIA DEPARTMENT OF PUBLIC WORKS	
BIG SPRINGS ROAD SANITARY SEWER DISTRICT		GOODRICH DRIVE & HILLDALE COURT	
DESIGNED BY P.C.H.	SUBMITTED BY Charles E. Robertson	APPROVED BY [Signature]	PROJ. NO. 6053
DRAWN BY J.P.G.	PARK DEPT. TRAFFIC DIV.	DIRECTOR OF PUBLIC WORKS	S-584
CHECKED BY P.C.H.	RECOMMENDED BY [Signature]	DATE 1-19-65	SHEET 2 OF 2