

ASSESSMENT NO. 507

DIAGRAM

EXHIBITING **BIG SPRINGS ROAD SANITARY SEWER DISTRICT**
IN THE CITY OF RIVERSIDE, CALIFORNIA, AND THE WORK WHICH HAS BEEN DONE
PURSUANT TO THE CONTRACT BETWEEN THE SUPERINTENDENT OF STREETS OF
SAID CITY AND **VIDO SAMARZICH** DATED **JUNE 30, 1965**,
FOR THE CONSTRUCTION OF A SANITARY SEWER AND APPURTENANCES

AS IS MORE PARTICULARLY DESCRIBED IN SAID CONTRACT, TO WHICH REFERENCE
IS HEREBY MADE FOR FURTHER PARTICULARS.
SAID DIAGRAM ALSO SHOWS EACH SEPARATE LOT OR PARCEL OF LAND WITHIN THE
LIMITS OF THE ASSESSMENT DISTRICT, AND THE DIMENSIONS OF EACH SUCH LOT OR
PARCEL OF LAND, AND THE RELATIVE LOCATION OF THE SAME TO THE WORK DONE.
EACH LOT OR PARCEL OF LAND IS NUMBERED IN RED INK TO CORRESPOND TO THE
RED INK NUMBERS IN THE ASSESSMENT.
HEREIN FIGURES NEXT TO PROPERTY LINES SHOW LENGTH OF SAID LINES IN FEET
AND DECIMALS THEREOF.
THE MARK "0" MEANS FEET.
PROPERTY LINES THAT DIFFER FROM THE RECORDED SUBDIVISIONS ARE SHOWN BY
BROKEN LINES.
THE DISTRICT BENEFITED IS BOUNDED BY A HEAVY DASHED LINE.
PROPERTY INCLUDED IN THIS ASSESSMENT IS SHOWN ON THE FOLLOWING RECORD-
ED MAPS:

TRACT NO. 2079 - M.B. 40, PGS. 70 & 71, RIV. CO. REC.
RECORD OF SURVEY - B. 34, PG. 24, RIV. CO. REC.
N $\frac{1}{2}$ OF NW $\frac{1}{4}$ OF SEC. 28, T.2S., R.4W. S.B.B.&M.

HEREIN THE DIFFERENT KINDS OF WORK
PERFORMED ARE SHOWN AS FOLLOWS:

- 8" MAIN SEWER
- 4" HOUSE CONNECTION LATERAL
- 8" X 4" WYE
- MANHOLE
- ⊙----- CLEANOUT

HERE FOLLOWS A STATEMENT OF AMOUNTS OF
DIFFERENT KINDS OF WORK DONE PURSUANT TO
THE HEREIN-BEFORE IDENTIFIED CONTRACT
AND TO RESOLUTION OF INTENTION NO. 10208,
ADOPTED BY THE CITY COUNCIL OF THE CITY
OF RIVERSIDE, CALIFORNIA ON THE 9TH DAY
OF MARCH, 1965, AND AS MODIFIED BY
RESOLUTION NO. 10229 ADOPTED BY THE
CITY COUNCIL OF THE CITY OF RIVERSIDE,
CALIFORNIA ON THE 6TH DAY OF APRIL, 1965

2675 L.F. 8" VITRIFIED CLAY PIPE
1,100 L.F. 4" VITRIFIED CLAY PIPE
42 EA. 8" X 4" V.C.P. WYES
10 EA. MANHOLES - STD. DWG. NO. 500
1 EA. CLEANOUT - STD. DWG. NO. 560
10,600 S.F. PAVEMENT REPLACEMENT

I HEREBY CERTIFY THAT THE ABOVE WORK WAS DONE IN ACCORDANCE
WITH LINES AND GRADES FURNISHED OR APPROVED BY ME, AND THAT
THE DIAGRAM OF THE ASSESSMENT DISTRICT AND THE QUANTITIES
OF WORK SHOWN HEREON ARE CORRECT.

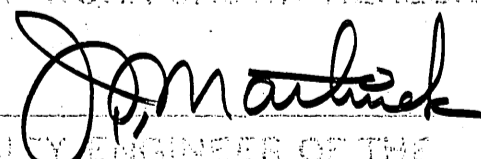

CITY ENGINEER OF THE
CITY OF RIVERSIDE, CALIFORNIA

DIAGRAM RECEIVED:

THIS _____ DAY OF _____, 19 _____

SUPERINTENDENT OF STREETS OF THE
CITY OF RIVERSIDE, CALIFORNIA

RECORDED:

AT _____ O'CLOCK, A.M.,
THIS _____ DAY OF _____, 19 _____

SUPERINTENDENT OF STREETS OF THE
CITY OF RIVERSIDE, CALIFORNIA

Handwritten initials

ASSESSMENT NO. 307

DIAGRAM

EXHIBITING THE SPURDIN ROAD SANITARY SEWER DISTRICT
IN THE CITY OF RIVERSIDE, CALIFORNIA, AND THE WORK WHICH HAS BEEN DONE
PURSUANT TO THE CONTRACT BETWEEN THE SUPERINTENDENT OF STREETS OF
SAID CITY AND VEDD SAMARTEK DATED JUNE 20, 1934,
FOR THE CONSTRUCTION OF A SANITARY SEWER AND APPURTENANCES

AS IS MORE PARTICULARLY DESCRIBED IN SAID CONTRACT, TO WHICH REFERENCE
IS HEREBY MADE FOR FURTHER PARTICULARS.
SAID DIAGRAM ALSO SHOWS EACH SEPARATE LOT OR PARCEL OF LAND WITHIN THE
LIMITS OF THE ASSESSMENT DISTRICT, AND THE DIMENSIONS OF EACH SUCH LOT OR
PARCEL OF LAND, AND THE RELATIVE LOCATION OF THE SAME TO THE WORK DONE.
EACH LOT OR PARCEL OF LAND IS NUMBERED IN RED INK TO CORRESPOND TO THE
RED INK NUMBERS IN THE ASSESSMENT.
HEREIN FIGURES NEXT TO PROPERTY LINES SHOW LENGTH OF SAID LINES IN FEET
AND DECIMALS THEREOF.
THE MARK (') MEANS FEET.
PROPERTY LINES THAT DIFFER FROM THE RECORDED SUBDIVISIONS ARE SHOWN BY
BROKEN LINES.
THE DISTRICT BENEFITED IS BOUNDED BY A HEAVY DASHED LINE.
PROPERTY INCLUDED IN THIS ASSESSMENT IS SHOWN ON THE FOLLOWING RECORD-
ED MAPS:

TRACT NO. 2073 - M.B. 40, P. 70 & 71, 84V. CO. REC.
RECORD OF SURVEY - P. 34, P. 24, N.W. CORNER
NO. OF MAPS OF 312, 26, 123, 84W, 888, 8M

HEREIN THE DIFFERENT KINDS OF WORK
PERFORMED ARE SHOWN AS FOLLOWS:

- 12" VITRIFIED CLAY PIPE
- 18" VITRIFIED CLAY PIPE
- 24" VITRIFIED CLAY PIPE
- 30" VITRIFIED CLAY PIPE
- 36" VITRIFIED CLAY PIPE
- 42" VITRIFIED CLAY PIPE
- 48" VITRIFIED CLAY PIPE
- 54" VITRIFIED CLAY PIPE
- 60" VITRIFIED CLAY PIPE
- 66" VITRIFIED CLAY PIPE
- 72" VITRIFIED CLAY PIPE
- 78" VITRIFIED CLAY PIPE
- 84" VITRIFIED CLAY PIPE
- 90" VITRIFIED CLAY PIPE
- 96" VITRIFIED CLAY PIPE
- 102" VITRIFIED CLAY PIPE
- 108" VITRIFIED CLAY PIPE
- 114" VITRIFIED CLAY PIPE
- 120" VITRIFIED CLAY PIPE
- 126" VITRIFIED CLAY PIPE
- 132" VITRIFIED CLAY PIPE
- 138" VITRIFIED CLAY PIPE
- 144" VITRIFIED CLAY PIPE
- 150" VITRIFIED CLAY PIPE
- 156" VITRIFIED CLAY PIPE
- 162" VITRIFIED CLAY PIPE
- 168" VITRIFIED CLAY PIPE
- 174" VITRIFIED CLAY PIPE
- 180" VITRIFIED CLAY PIPE
- 186" VITRIFIED CLAY PIPE
- 192" VITRIFIED CLAY PIPE
- 198" VITRIFIED CLAY PIPE
- 204" VITRIFIED CLAY PIPE
- 210" VITRIFIED CLAY PIPE
- 216" VITRIFIED CLAY PIPE
- 222" VITRIFIED CLAY PIPE
- 228" VITRIFIED CLAY PIPE
- 234" VITRIFIED CLAY PIPE
- 240" VITRIFIED CLAY PIPE
- 246" VITRIFIED CLAY PIPE
- 252" VITRIFIED CLAY PIPE
- 258" VITRIFIED CLAY PIPE
- 264" VITRIFIED CLAY PIPE
- 270" VITRIFIED CLAY PIPE
- 276" VITRIFIED CLAY PIPE
- 282" VITRIFIED CLAY PIPE
- 288" VITRIFIED CLAY PIPE
- 294" VITRIFIED CLAY PIPE
- 300" VITRIFIED CLAY PIPE
- 306" VITRIFIED CLAY PIPE
- 312" VITRIFIED CLAY PIPE
- 318" VITRIFIED CLAY PIPE
- 324" VITRIFIED CLAY PIPE
- 330" VITRIFIED CLAY PIPE
- 336" VITRIFIED CLAY PIPE
- 342" VITRIFIED CLAY PIPE
- 348" VITRIFIED CLAY PIPE
- 354" VITRIFIED CLAY PIPE
- 360" VITRIFIED CLAY PIPE
- 366" VITRIFIED CLAY PIPE
- 372" VITRIFIED CLAY PIPE
- 378" VITRIFIED CLAY PIPE
- 384" VITRIFIED CLAY PIPE
- 390" VITRIFIED CLAY PIPE
- 396" VITRIFIED CLAY PIPE
- 402" VITRIFIED CLAY PIPE
- 408" VITRIFIED CLAY PIPE
- 414" VITRIFIED CLAY PIPE
- 420" VITRIFIED CLAY PIPE
- 426" VITRIFIED CLAY PIPE
- 432" VITRIFIED CLAY PIPE
- 438" VITRIFIED CLAY PIPE
- 444" VITRIFIED CLAY PIPE
- 450" VITRIFIED CLAY PIPE
- 456" VITRIFIED CLAY PIPE
- 462" VITRIFIED CLAY PIPE
- 468" VITRIFIED CLAY PIPE
- 474" VITRIFIED CLAY PIPE
- 480" VITRIFIED CLAY PIPE
- 486" VITRIFIED CLAY PIPE
- 492" VITRIFIED CLAY PIPE
- 498" VITRIFIED CLAY PIPE
- 504" VITRIFIED CLAY PIPE
- 510" VITRIFIED CLAY PIPE
- 516" VITRIFIED CLAY PIPE
- 522" VITRIFIED CLAY PIPE
- 528" VITRIFIED CLAY PIPE
- 534" VITRIFIED CLAY PIPE
- 540" VITRIFIED CLAY PIPE
- 546" VITRIFIED CLAY PIPE
- 552" VITRIFIED CLAY PIPE
- 558" VITRIFIED CLAY PIPE
- 564" VITRIFIED CLAY PIPE
- 570" VITRIFIED CLAY PIPE
- 576" VITRIFIED CLAY PIPE
- 582" VITRIFIED CLAY PIPE
- 588" VITRIFIED CLAY PIPE
- 594" VITRIFIED CLAY PIPE
- 600" VITRIFIED CLAY PIPE
- 606" VITRIFIED CLAY PIPE
- 612" VITRIFIED CLAY PIPE
- 618" VITRIFIED CLAY PIPE
- 624" VITRIFIED CLAY PIPE
- 630" VITRIFIED CLAY PIPE
- 636" VITRIFIED CLAY PIPE
- 642" VITRIFIED CLAY PIPE
- 648" VITRIFIED CLAY PIPE
- 654" VITRIFIED CLAY PIPE
- 660" VITRIFIED CLAY PIPE
- 666" VITRIFIED CLAY PIPE
- 672" VITRIFIED CLAY PIPE
- 678" VITRIFIED CLAY PIPE
- 684" VITRIFIED CLAY PIPE
- 690" VITRIFIED CLAY PIPE
- 696" VITRIFIED CLAY PIPE
- 702" VITRIFIED CLAY PIPE
- 708" VITRIFIED CLAY PIPE
- 714" VITRIFIED CLAY PIPE
- 720" VITRIFIED CLAY PIPE
- 726" VITRIFIED CLAY PIPE
- 732" VITRIFIED CLAY PIPE
- 738" VITRIFIED CLAY PIPE
- 744" VITRIFIED CLAY PIPE
- 750" VITRIFIED CLAY PIPE
- 756" VITRIFIED CLAY PIPE
- 762" VITRIFIED CLAY PIPE
- 768" VITRIFIED CLAY PIPE
- 774" VITRIFIED CLAY PIPE
- 780" VITRIFIED CLAY PIPE
- 786" VITRIFIED CLAY PIPE
- 792" VITRIFIED CLAY PIPE
- 798" VITRIFIED CLAY PIPE
- 804" VITRIFIED CLAY PIPE
- 810" VITRIFIED CLAY PIPE
- 816" VITRIFIED CLAY PIPE
- 822" VITRIFIED CLAY PIPE
- 828" VITRIFIED CLAY PIPE
- 834" VITRIFIED CLAY PIPE
- 840" VITRIFIED CLAY PIPE
- 846" VITRIFIED CLAY PIPE
- 852" VITRIFIED CLAY PIPE
- 858" VITRIFIED CLAY PIPE
- 864" VITRIFIED CLAY PIPE
- 870" VITRIFIED CLAY PIPE
- 876" VITRIFIED CLAY PIPE
- 882" VITRIFIED CLAY PIPE
- 888" VITRIFIED CLAY PIPE
- 894" VITRIFIED CLAY PIPE
- 900" VITRIFIED CLAY PIPE
- 906" VITRIFIED CLAY PIPE
- 912" VITRIFIED CLAY PIPE
- 918" VITRIFIED CLAY PIPE
- 924" VITRIFIED CLAY PIPE
- 930" VITRIFIED CLAY PIPE
- 936" VITRIFIED CLAY PIPE
- 942" VITRIFIED CLAY PIPE
- 948" VITRIFIED CLAY PIPE
- 954" VITRIFIED CLAY PIPE
- 960" VITRIFIED CLAY PIPE
- 966" VITRIFIED CLAY PIPE
- 972" VITRIFIED CLAY PIPE
- 978" VITRIFIED CLAY PIPE
- 984" VITRIFIED CLAY PIPE
- 990" VITRIFIED CLAY PIPE
- 996" VITRIFIED CLAY PIPE
- 1002" VITRIFIED CLAY PIPE
- 1008" VITRIFIED CLAY PIPE
- 1014" VITRIFIED CLAY PIPE
- 1020" VITRIFIED CLAY PIPE
- 1026" VITRIFIED CLAY PIPE
- 1032" VITRIFIED CLAY PIPE
- 1038" VITRIFIED CLAY PIPE
- 1044" VITRIFIED CLAY PIPE
- 1050" VITRIFIED CLAY PIPE
- 1056" VITRIFIED CLAY PIPE
- 1062" VITRIFIED CLAY PIPE
- 1068" VITRIFIED CLAY PIPE
- 1074" VITRIFIED CLAY PIPE
- 1080" VITRIFIED CLAY PIPE
- 1086" VITRIFIED CLAY PIPE
- 1092" VITRIFIED CLAY PIPE
- 1098" VITRIFIED CLAY PIPE
- 1104" VITRIFIED CLAY PIPE
- 1110" VITRIFIED CLAY PIPE
- 1116" VITRIFIED CLAY PIPE
- 1122" VITRIFIED CLAY PIPE
- 1128" VITRIFIED CLAY PIPE
- 1134" VITRIFIED CLAY PIPE
- 1140" VITRIFIED CLAY PIPE
- 1146" VITRIFIED CLAY PIPE
- 1152" VITRIFIED CLAY PIPE
- 1158" VITRIFIED CLAY PIPE
- 1164" VITRIFIED CLAY PIPE
- 1170" VITRIFIED CLAY PIPE
- 1176" VITRIFIED CLAY PIPE
- 1182" VITRIFIED CLAY PIPE
- 1188" VITRIFIED CLAY PIPE
- 1194" VITRIFIED CLAY PIPE
- 1200" VITRIFIED CLAY PIPE

HERE FOLLOWS A STATEMENT OF AMOUNTS OF
DIFFERENT KINDS OF WORK DONE PURSUANT TO
THE HERE-IN-BEFORE IDENTIFIED CONTRACT
AND TO RESOLUTION OF INTENTION NO. 1234,
ADOPTED BY THE CITY COUNCIL OF THE CITY
OF RIVERSIDE, CALIFORNIA ON THE 31st DAY
OF MARCH, 1934, AS MODIFIED BY
RESOLUTION NO. 123456 ADOPTED BY THE
CITY COUNCIL OF THE CITY OF RIVERSIDE,
CALIFORNIA ON THE 31st DAY OF APRIL 1934

- 2875 LB. 6" VITRIFIED CLAY PIPE
- 1100 LB. 8" VITRIFIED CLAY PIPE
- 43 EA. 6" X 4" VICE WYES
- 10 EA. MANHOLES - STD. DIA. NO. 800
- 1 EA. CLEANOUT - STD. DIA. NO. 800
- 10200 EA. PAVEMENT REPLACEMENT

I HEREBY CERTIFY THAT THE ABOVE WORK WAS DONE IN ACCORDANCE
WITH LINES AND GRADES FURNISHED OR APPROVED BY ME, AND THAT
THE DIAGRAM OF THE ASSESSMENT DISTRICT AND THE QUANTITIES
OF WORK SHOWN HEREON ARE CORRECT.

[Signature]
CITY ENGINEER OF THE
CITY OF RIVERSIDE, CALIFORNIA

DIAGRAM RECEIVED:
THIS DAY OF , 19

SUPERINTENDENT OF STREETS OF THE
CITY OF RIVERSIDE, CALIFORNIA

RECORDED:
AT O'CLOCK, .M.,
THIS DAY OF , 19

SUPERINTENDENT OF STREETS OF THE
CITY OF RIVERSIDE, CALIFORNIA

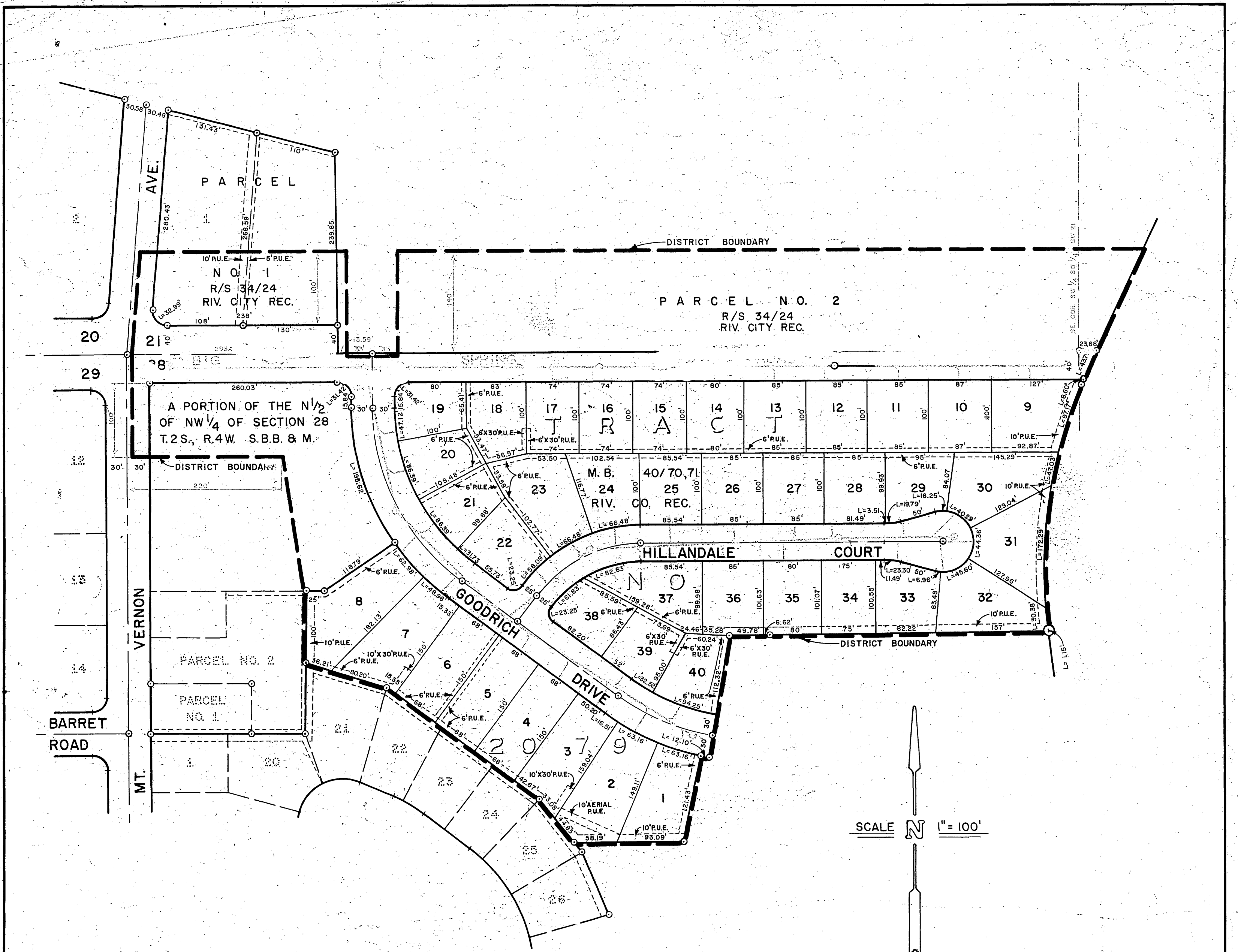


DIAGRAM OF THE PROPERTY AFFECTED OR BENEFITED BY THE WORK IN THE BIG SPRINGS ROAD SANITARY SEWER DISTRICT.

REVISIONS			CITY OF RIVERSIDE, CALIFORNIA DEPARTMENT OF PUBLIC WORKS.	
MARK	DATE	DESCRIPTION		
			BIG SPRINGS ROAD SANITARY SEWER DISTRICT	
DESIGNED BY	SUBMITTED BY	APPROVED BY	PROJ. NO. 6053	
DRAWN BY J.P.G.	PARK DEPT. TRAFFIC DIV.	<i>[Signature]</i> DIRECTOR OF PUBLIC WORKS	S-584-B	
CHECKED BY	RECOMMENDED BY	DATE	SHEET 2 OF 2	

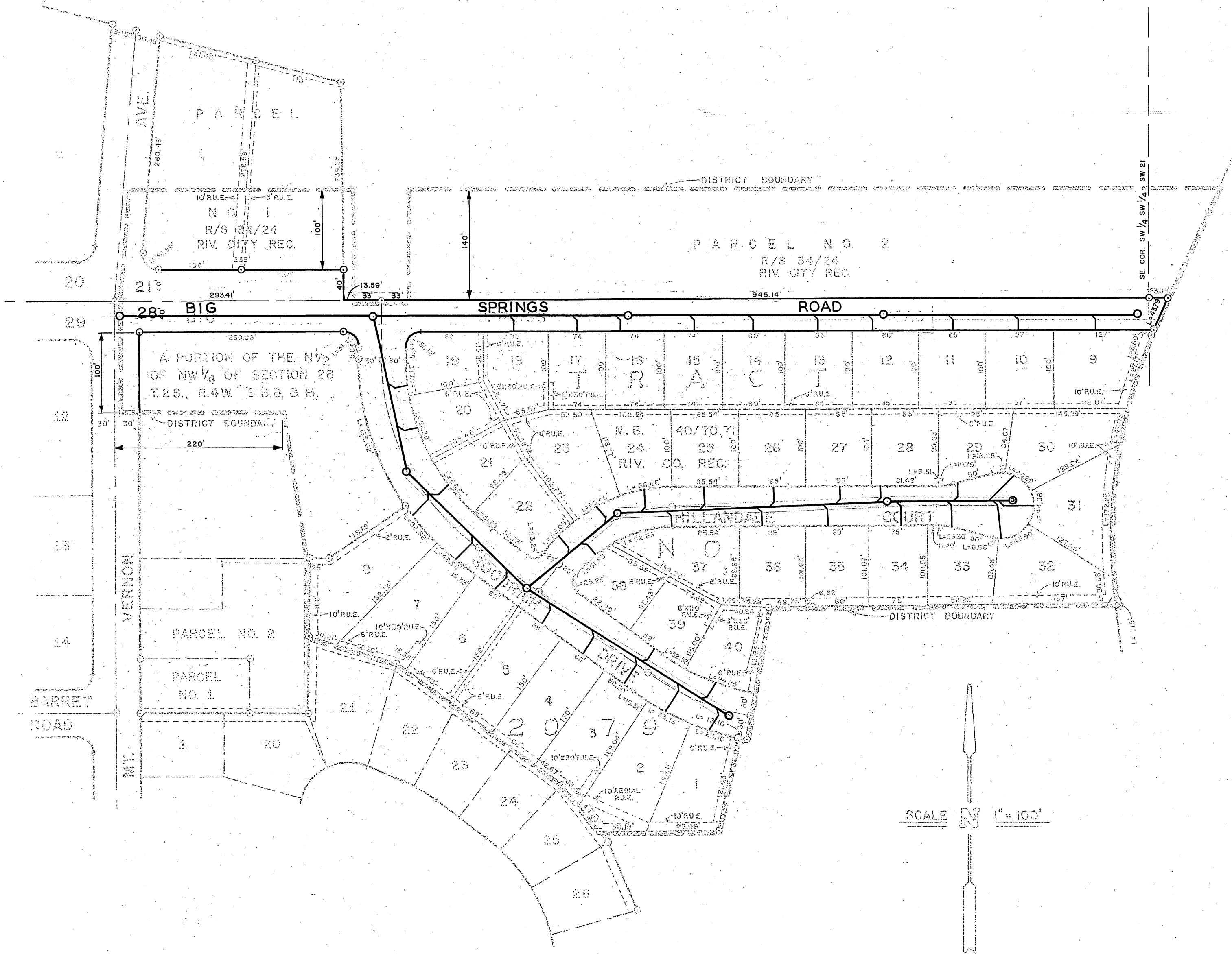


DIAGRAM OF THE PROPERTY AFFECTED OR BENEFITED BY THE WORK IN THE BIG SPRINGS ROAD SANITARY SEWER DISTRICT.

REVISIONS			CITY OF RIVERSIDE, CALIFORNIA DEPARTMENT OF PUBLIC WORKS	
MARK	DATE	DESCRIPTION		
			BIG SPRINGS ROAD SANITARY SEWER DISTRICT	
DESIGNED BY	APPROVED BY	PROJECT NO.	8053	
DRAWN BY J.P.G.	W. D. Gardner	S-584-B		
CHECKED BY	DATE	11-18-65		SHEET 2 OF 2