

GENERAL NOTES

1. Construction shall be in accordance with City of Riverside, Department of Public Works, Standard Specifications No. 461 and Standard Drawings.
2. It shall be the responsibility of the contractor to clear the right of way in accordance with the provisions of the law as it affects each utility, including irrigation lines and appurtenances and at no cost to the City.
3. Joints in vitrified clay pipe sewers shall conform to A.S.T.M. Standard C-425-60T, or the latest revision thereof.
4. Pipe shall be bedded per Case II, Standard Drawing No. 452, unless otherwise specified on plan.
5. Location of Wyes and Laterals to be determined in the field.

NOTICE TO CONTRACTOR

The existence and location of any underground utility pipes or structures shown on these plans are obtained by a search of the available records. To the best of our knowledge, there are no existing utilities, except as shown on these plans. The Contractor is required to take due precautionary measures to protect the utility lines shown and any other lines not of record or not shown on these plans.

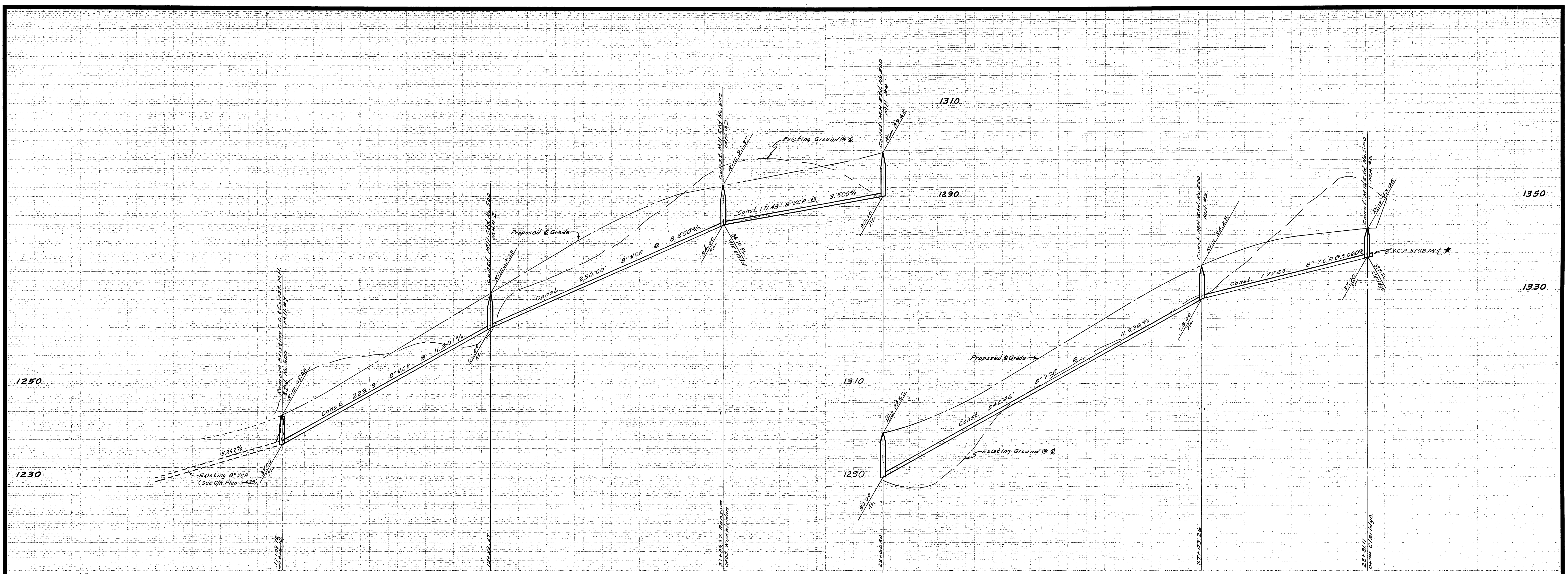
BENCH MARK:

F.B. 549/14, Elev/1236.61 Chisel D on Northend of N.W. Corner Ransom Rd. & Shaker.

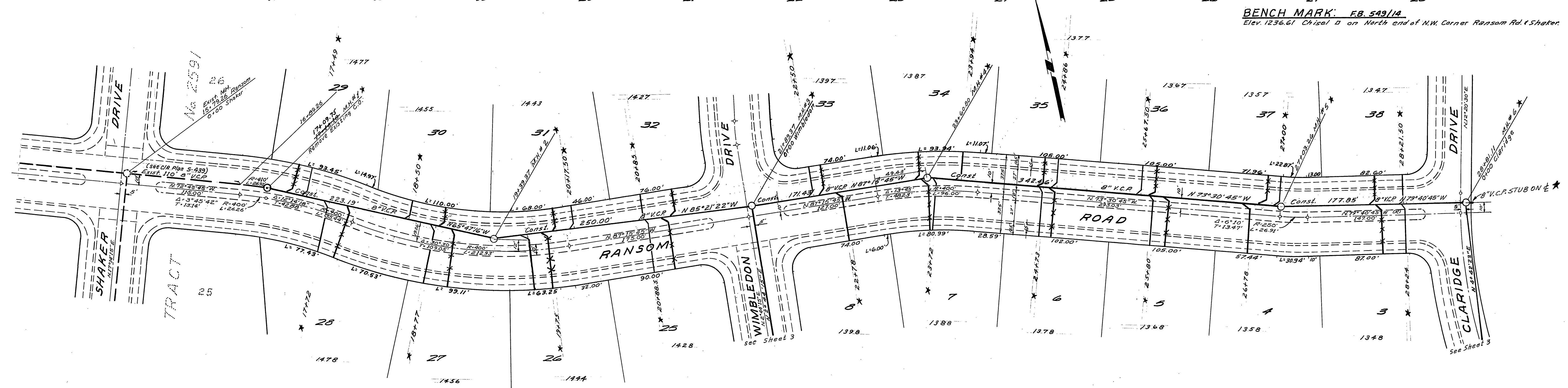
QUANTITY ESTIMATE

Manhole Standard No. 500	13 Ea.
Clean Out Standard No. 560	1 Ea.
8" Vitrified Clay Pipe	2,762 LF
4" Vitrified Clay Pipe	1,300 LF
4"x8" Wyes	30 Ea.

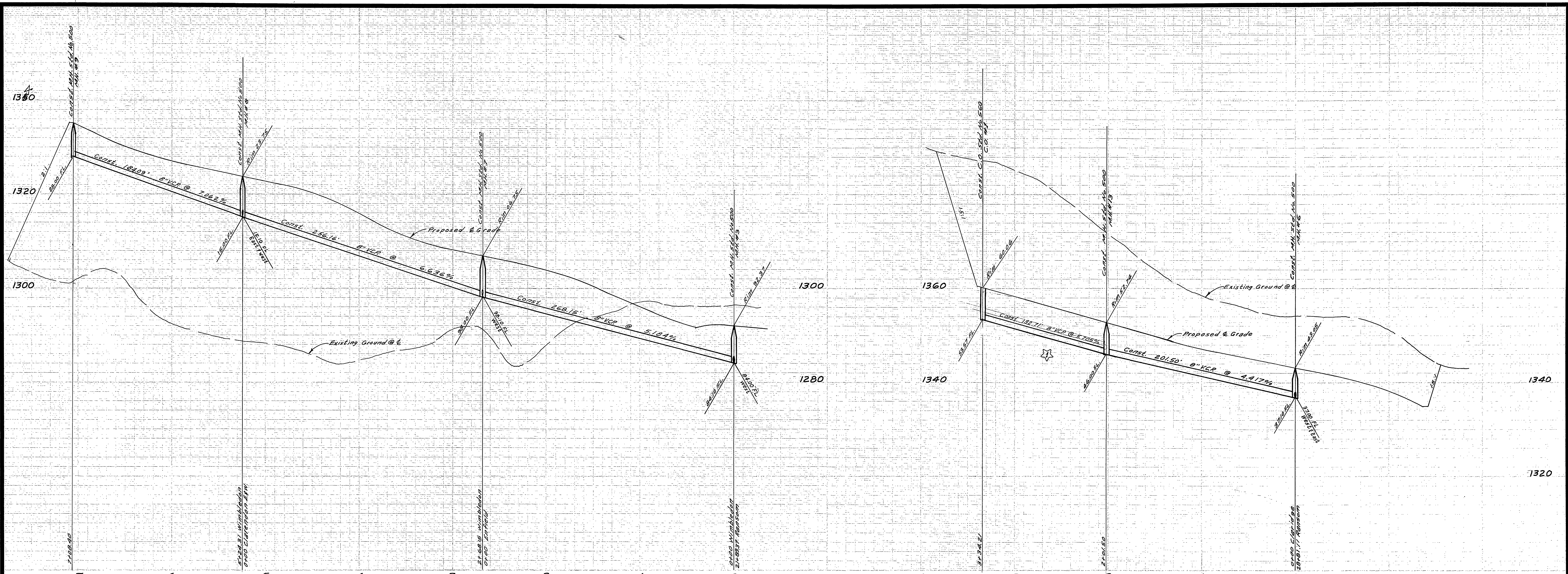
<p>ALBERT A. WEBB ASSOCIATES CIVIL ENGINEERS RIVERSIDE, CALIFORNIA</p> <p>APPROVED BY: <i>Albert A. Webb</i> DATE: 10/23/69 R.E. No. 3876</p>	<p>CITY OF RIVERSIDE, CALIFORNIA DEPARTMENT OF PUBLIC WORKS</p> <table border="1" style="width: 100%; border-collapse: collapse;"> <tr> <td>APPROVED BY</td> <td>BY</td> <td>DATE</td> <td>APPROVED BY</td> </tr> <tr> <td>OFFICE ENGINEER</td> <td><i>[Signature]</i></td> <td></td> <td>DIRECTOR OF PUBLIC WORKS</td> </tr> <tr> <td>PARK DEPARTMENT</td> <td></td> <td></td> <td></td> </tr> <tr> <td>TRAFFIC DIVISION</td> <td></td> <td></td> <td></td> </tr> <tr> <td>ASSISTANT CITY ENG.</td> <td><i>[Signature]</i></td> <td></td> <td></td> </tr> </table> <p>DATE: 11-10-69</p>	APPROVED BY	BY	DATE	APPROVED BY	OFFICE ENGINEER	<i>[Signature]</i>		DIRECTOR OF PUBLIC WORKS	PARK DEPARTMENT				TRAFFIC DIVISION				ASSISTANT CITY ENG.	<i>[Signature]</i>			<p>INDEX MAP - FOR - SEWER PLAN &amp; PROFILE TRACT No. 3111</p>	<p>PROJECT NO. <b>S-586</b></p> <p>SHEET 1 OF 1</p> <p>FILE NO. 67269-B</p>
APPROVED BY	BY	DATE	APPROVED BY																				
OFFICE ENGINEER	<i>[Signature]</i>		DIRECTOR OF PUBLIC WORKS																				
PARK DEPARTMENT																							
TRAFFIC DIVISION																							
ASSISTANT CITY ENG.	<i>[Signature]</i>																						
<p>DESIGNED BY: <i>ERC</i> DRAWN BY: <i>EM</i> CHECKED BY: <i>ERC</i></p>		<p>HORIZ. SCALE: 1" = 80' VERT. SCALE: 1" = 8'</p>																					



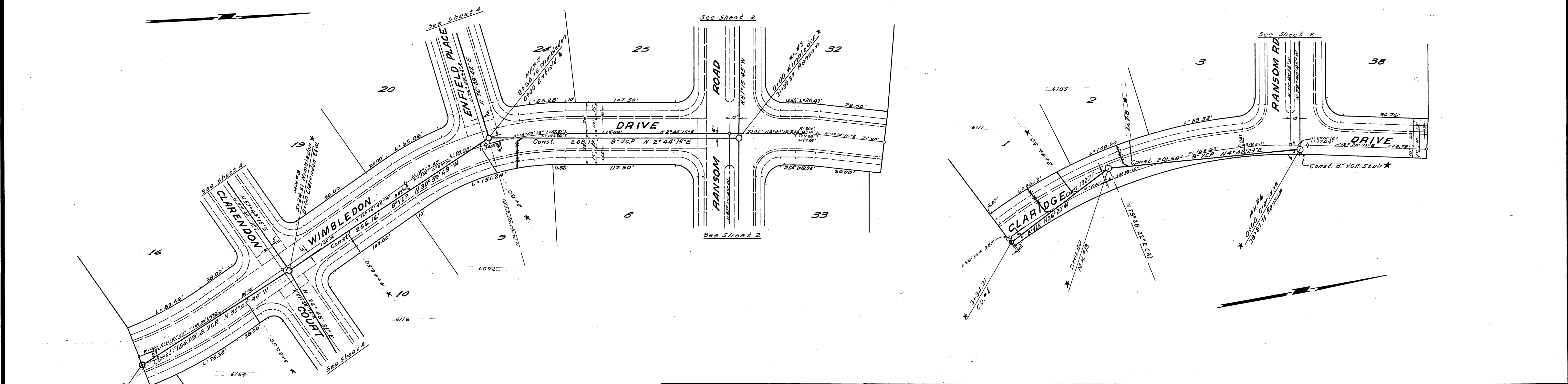
BENCH MARK: FB 549/14  
Elev. 1236.61 Chisel D on North end of N.W. Corner Ransom Rd. & Shaker



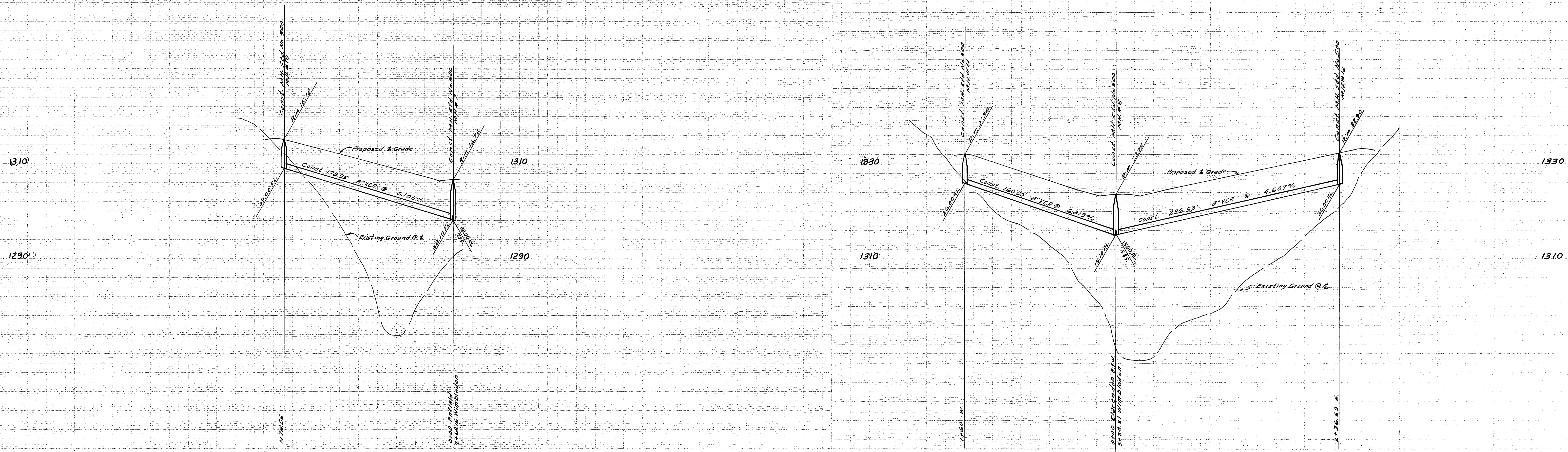
ALBERT A. WEBB ASSOCIATES CIVIL ENGINEERS RIVERSIDE, CALIFORNIA APPROVED BY <i>Albert A. Webb</i> DATE 10/23/64 R.E. No. 9826	CITY OF RIVERSIDE, CALIFORNIA DEPARTMENT OF PUBLIC WORKS APPROVED BY <i>[Signature]</i> DATE 11-10-64 OFFICE ENGINEER PARK DEPARTMENT TRAFFIC DIVISION ASSISTANT CITY ENG.	SEWER PLANS PROFILE RANSOM ROAD TRACT NO. 3111	PROJECT NO. <b>S-586</b> SHEET 2 OF 4 FILE NO. 64-269-B
		DESIGNED BY <i>BRC</i> DRAWN BY <i>BEL</i> CHECKED BY <i>REK</i>	HORIZ. SCALE: 1" = 50' VERT. SCALE: 1" = 10'



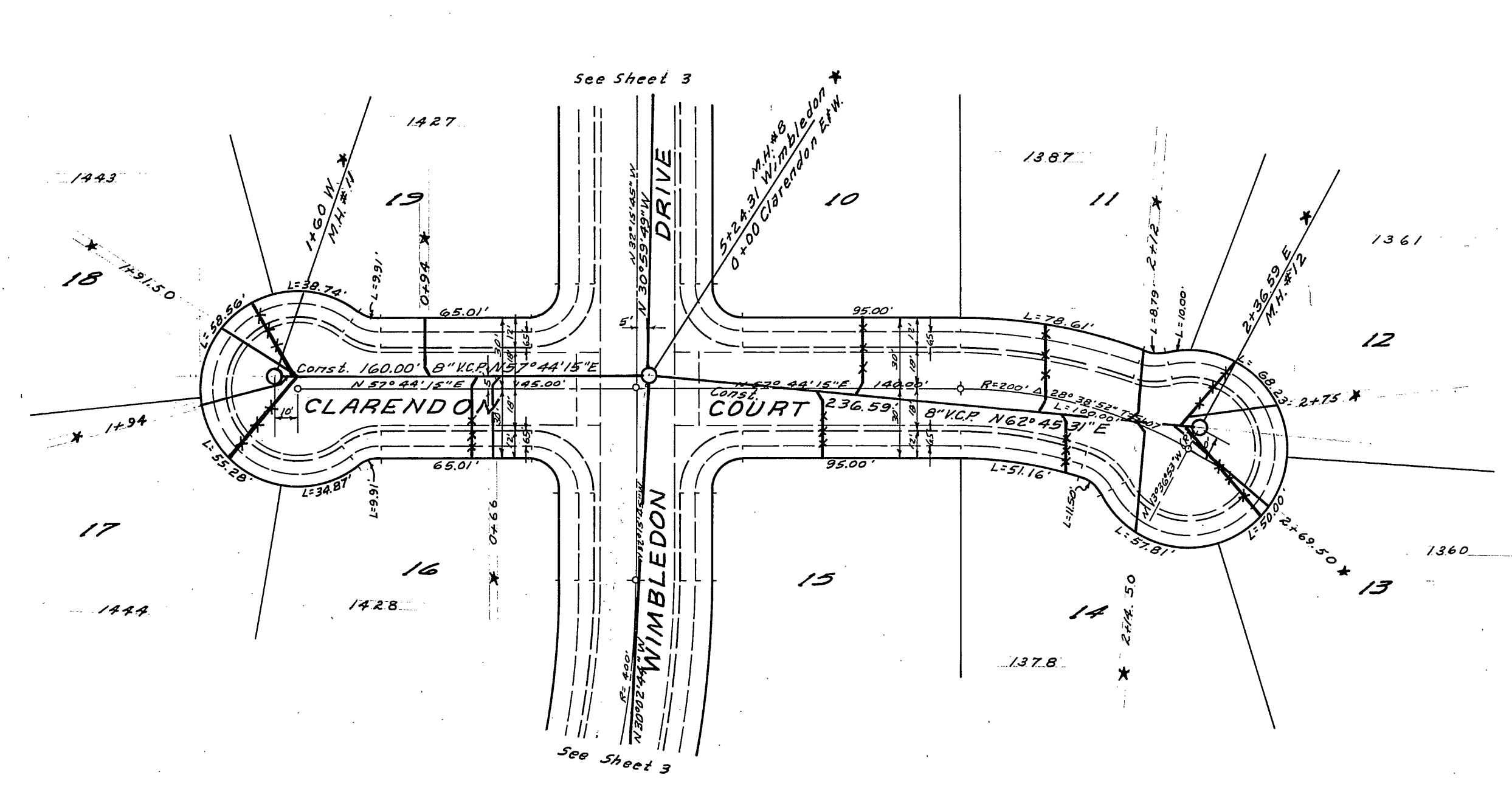
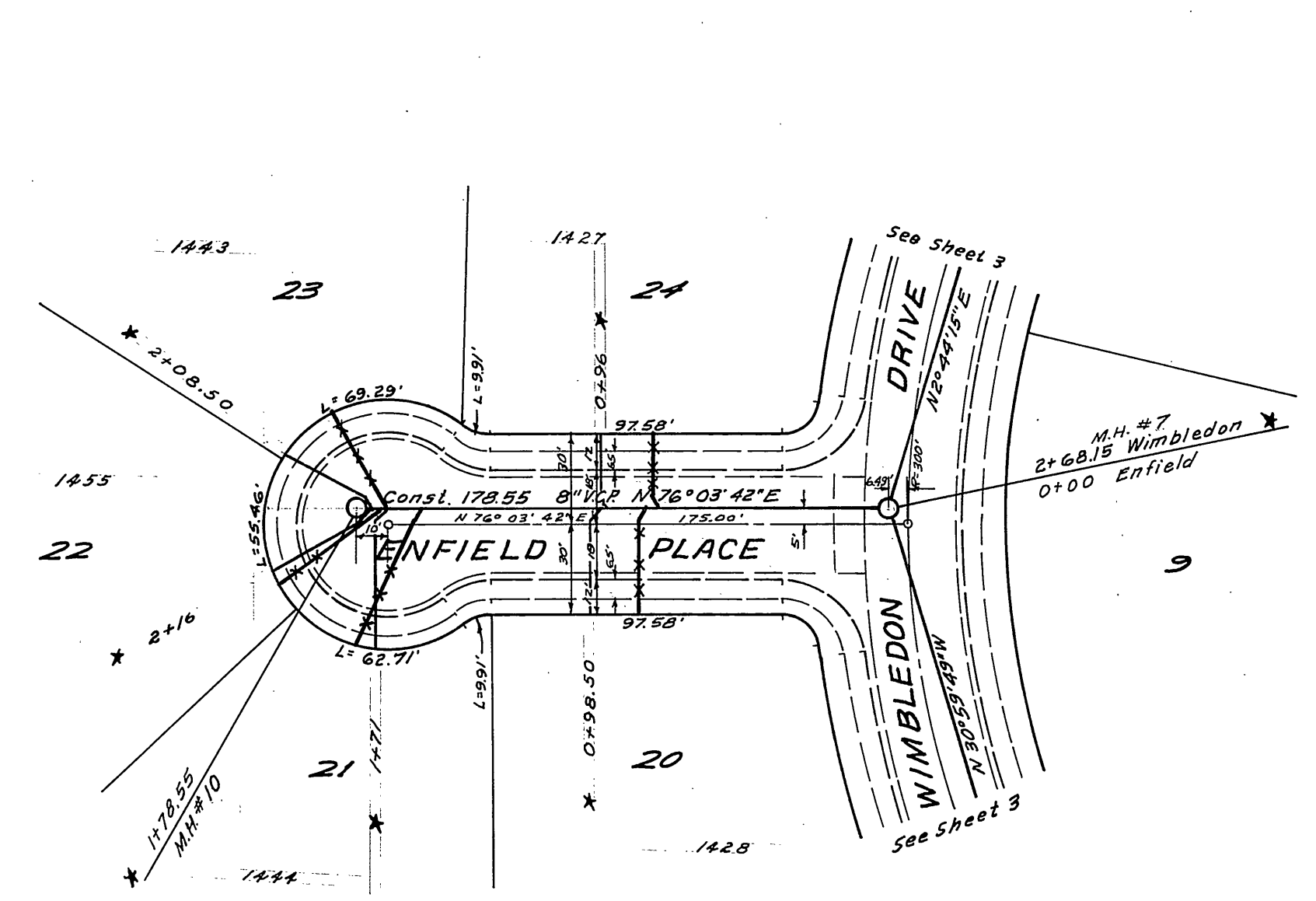
BENCH MARK: F.B. 549/14  
 Elev. 1236.61 Chisel D on North end of NW Corner Ransom Rd. & Shaker.



ALBERT A. WEBB ASSOCIATES CIVIL ENGINEERS RIVERSIDE, CALIFORNIA		CITY OF RIVERSIDE, CALIFORNIA DEPARTMENT OF PUBLIC WORKS		SEWER PLAN & PROFILE <b>WIMBLETON DRIVE</b> <b>CLARIDGE DRIVE</b> TRACT N <sup>o</sup> 3111		PROJECT NO. <b>S-586</b>
APPROVED BY: <i>[Signature]</i> DATE: 10/23/64 R.E. No. 3876		APPROVED BY: <i>[Signature]</i> DATE: 11-10-64 DIRECTOR OF PUBLIC WORKS		SHEET 3 OF 4		FILE NO. 64-262-B
DESIGNED BY: <i>[Signature]</i> DRAWN BY: <i>[Signature]</i> CHECKED BY: <i>[Signature]</i>		DESIGNED BY: <i>[Signature]</i> DRAWN BY: <i>[Signature]</i> CHECKED BY: <i>[Signature]</i>		HORIZ. SCALE: 1" = 50' VERT. SCALE: 1" = 10'		



BENCH MARK: FB 54914  
 Elev. 1236.61 Chisel 2 on North end of NW corner Ransom Rd. & Shaker.



\* AS BUILT 6-20-66 gnd/hv/HB

ALBERT A. WEBB ASSOCIATES CIVIL ENGINEERS RIVERSIDE, CALIFORNIA APPROVED BY: <i>E. A. Webb</i> DATE 10/23/64 R.E. No. 9876	DESIGNED BY: <i>ECC</i> DRAWN BY: <i>BEL</i> CHECKED BY: <i>RE-84</i>	CITY OF RIVERSIDE, CALIFORNIA DEPARTMENT OF PUBLIC WORKS		PROJECT NO. <b>S-586</b>
		APPROVED BY: <i>[Signature]</i> DATE 11-10-64 OFFICE ENGINEER PARK DEPARTMENT TRAFFIC DIVISION ASSISTANT CITY ENG.	APPROVED BY: <i>[Signature]</i> DIRECTOR OF PUBLIC WORKS	SHEET 4 OF 4 FILE NO. 64-269-B
W.O. 24-262 FOR: F.B. 549				HORIZ. SCALE: 1" = 50' VERT. SCALE: 1" = 10'