

GENERAL NOTES:

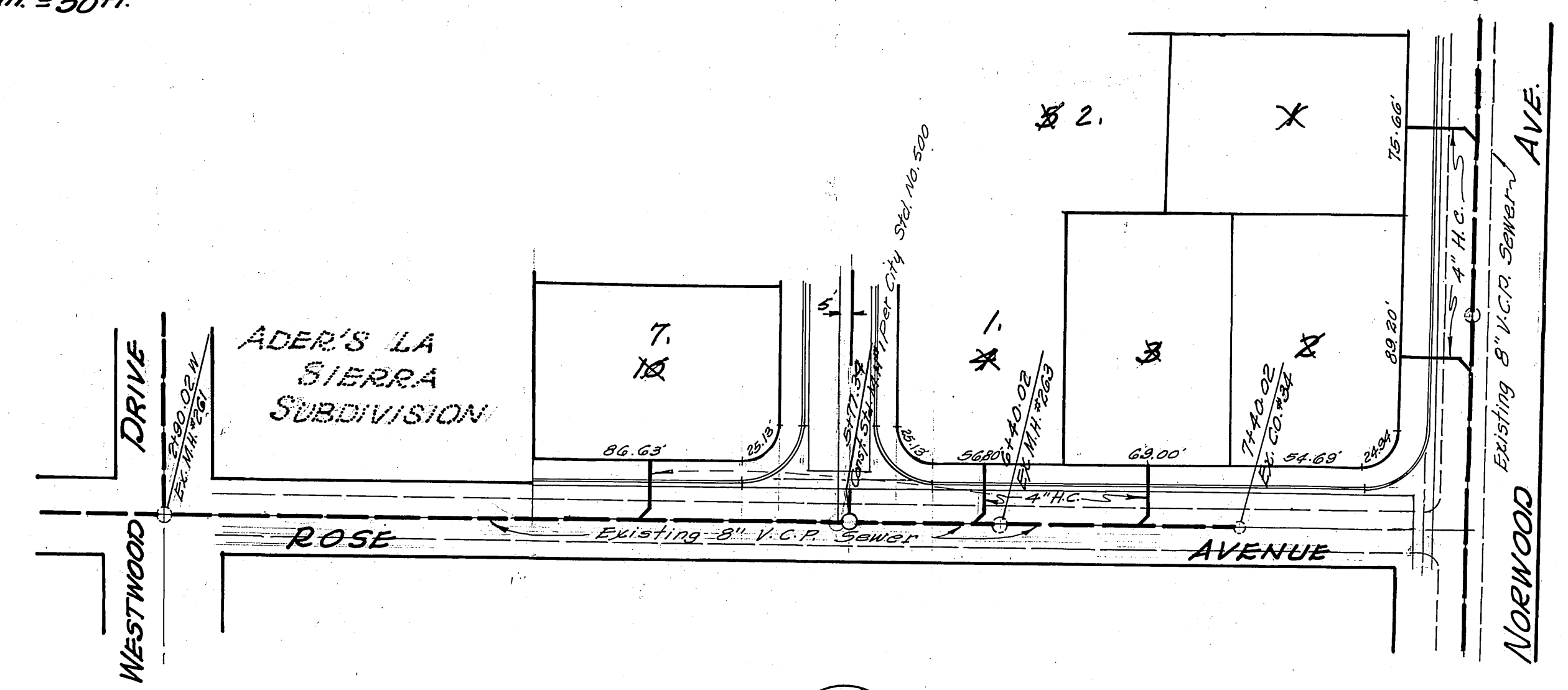
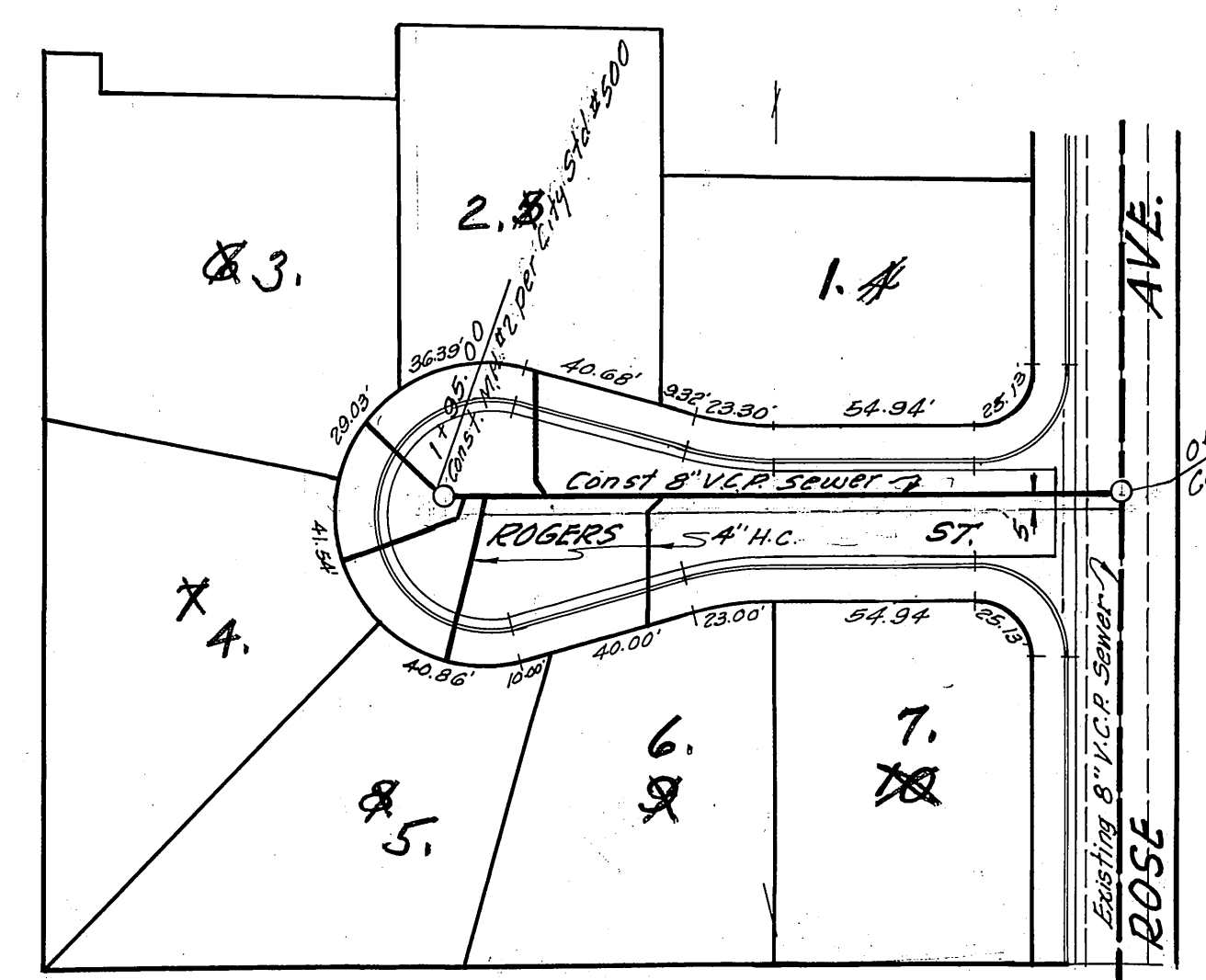
1. Construction shall be in accordance with the City of Riverside, Department of Public Works, Standard Specifications No. 461 and Standard Drawings.
2. It shall be the responsibility of the Contractor to clear the right of way in accordance with the provisions of the law as it affects each utility including irrigation lines and appurtenances and at no cost to the City.
3. Joints in vitrified clay pipe sewers shall conform to P.S.T.M. Standard C-425-607, or the latest revision thereof.
4. Pipe shall be bedded per Case II, Standard Drawing No. 452, unless otherwise specified on plan.
5. Locations of wyes and laterals to be determined in the field.
6. All stubs and laterals to be constructed in accordance with Standard Drawing No. 562. Stubs shall be plugged and capped.



SEWER PROFILE
 SCALE: 1 in. = 50 ft. Horiz.
 1 in. = 5 ft. Vert.

3 2 1 0 3 4 5 6 7 8

PLAN
 SCALE: 1 in. = 50 ft.



GENERAL NOTES:-

1. Location of wyes and house connection laterals to be determined.
2. Manhole frames and covers to be set to existing paving grades unless elevation is given in the Profile.
3. Prior to the construction of sewer, Contractor is to excavate and notify Engineer for verification of existing sewer at M.H. (5+72.92) Rose Ave.
4. Permanent paving after backfill to be the responsibility of the Paving Contractor.

Quantities

| | |
|-----------------------------|--------------|
| 8" V.C.P. Sewer | 195 lin. ft. |
| 4x8 V.C.P. Ys | 6 |
| 4" V.C.P. House Connections | 252 lin. ft. |
| Std. Manholes | 2 |

CRAWLEY & HAWKINS
 George O. Crawley
 18 20 24
 3-19-63

| REVISIONS | | |
|-----------|------|-------------|
| MARK | DATE | DESCRIPTION |
| | | |
| | | |

CITY OF RIVERSIDE, CALIFORNIA
 DEPARTMENT OF PUBLIC WORKS

TRACT NO. 2951
SEWER PLAN & PROFILE
 ROGERS ST. - Sta. 0+00 to Sta. 1+95
 ROSE AVE. - Sta. 2+90.02 to Sta. 7+40.02

| | | | |
|-------------|----------------------------|-------------|-----------|
| DESIGNED BY | SUBMITTED BY | APPROVED BY | PROJ. NO. |
| | William S. Bendner | | 5-588 |
| DRAWN BY | CITY DEPT. OF PUBLIC WORKS | | |
| CHECKED BY | | | |

Bench Mark:
 R.R. Spike in P. Pole #153455E on Rose Ave. 100' East of Mountain Ave. Elev. = 728.88