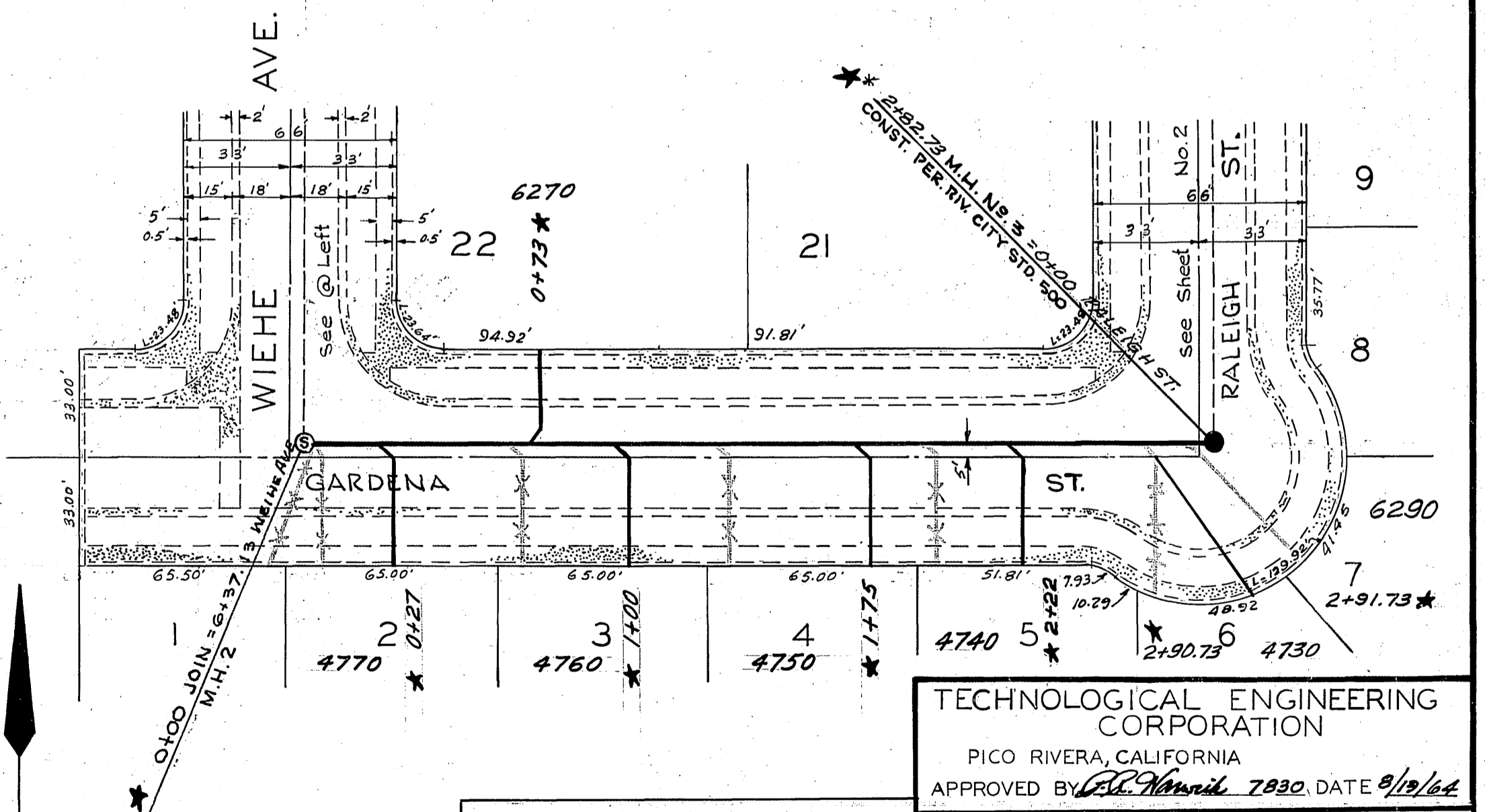
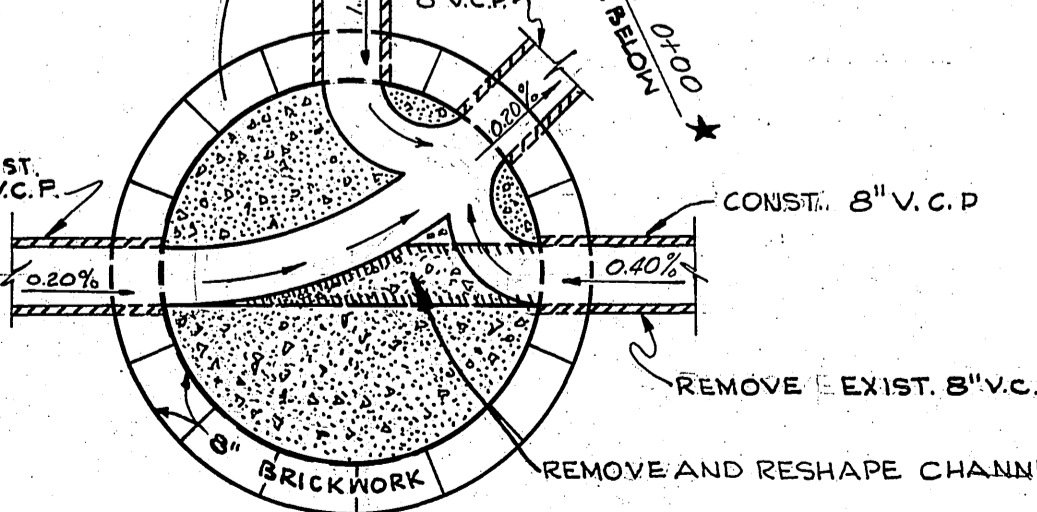
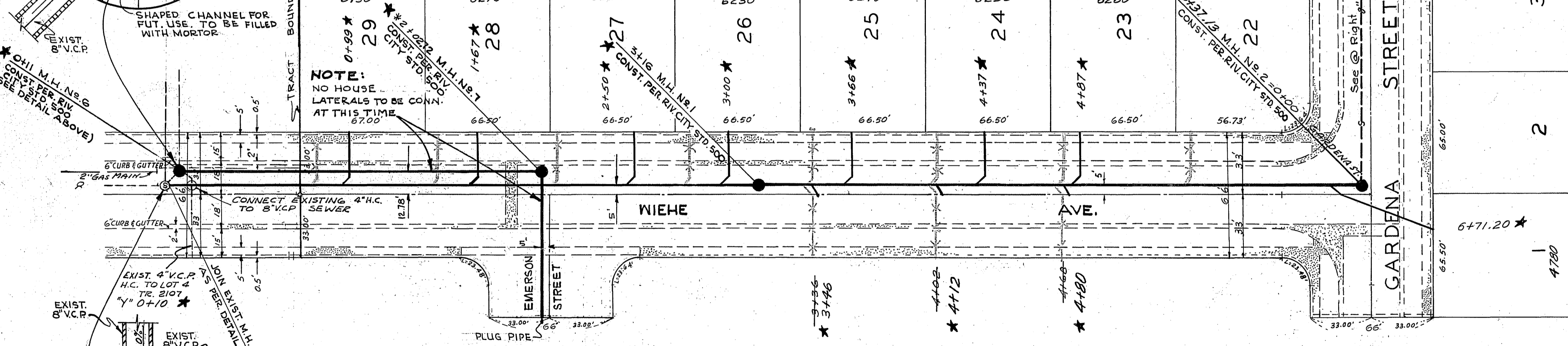
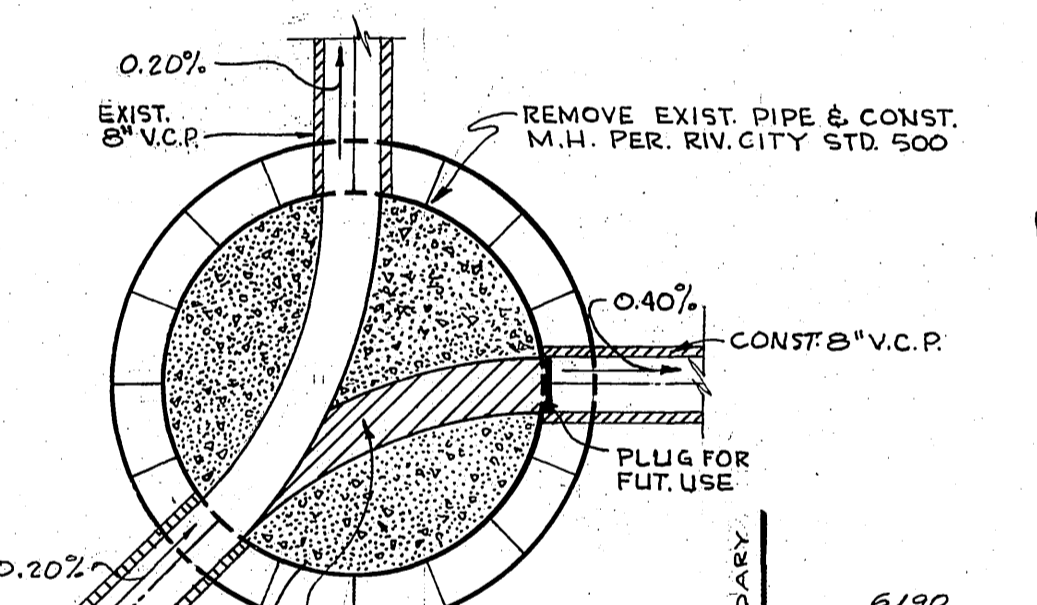


- GENERAL NOTES:**
1. CONSTRUCTION SHALL BE IN ACCORDANCE WITH THE CITY OF RIVERSIDE, DEPARTMENT OF PUBLIC WORKS, STANDARD SPECIFICATIONS NO. 461 AND STANDARD DRAWINGS.
 2. IT SHALL BE THE RESPONSIBILITY OF THE CONTRACTOR TO CLEAR THE RIGHT OF WAY IN ACCORDANCE WITH THE PROVISIONS OF THE LAW AS IT AFFECTS EACH UTILITY INCLUDING IRRIGATION LINES AND APPURTANANCES AND AT NO COST TO THE CITY.
 3. JOINTS IN VITRIFIED CLAY PIPE SHALL CONFORM TO ASTM STANDARD C-425-GOT, OR LATEST REVISION THEREOF.
 4. PIPE SHALL BE BEDDED PER CASE II, STANDARD DRAWING NO. 452 UNLESS OTHERWISE SPECIFIED ON PLAN.
 5. LOCATION OF WYES AND LATERALS TO BE DETERMINED IN THE FIELD.
 6. ALL STUBS AND LATERALS TO BE CONSTRUCTED IN ACCORDANCE WITH STANDARD DRAWING NO. 562. STUBS SHALL BE PLUGGED AND CAPPED.



TECHNOLOGICAL ENGINEERING CORPORATION
 PICO RIVERA, CALIFORNIA
 APPROVED BY *Ed. Arnold* 7830 DATE 9/10/64
 CITY OF RIVERSIDE, CALIFORNIA
 DEPARTMENT OF PUBLIC WORKS

SEWER IMPROVEMENTS
 TRACT NO. 3007 & TRACT NO. 3107
 WIEHE AVENUE
 TRACT NO. 2316 TO GARDENA ST.
 GARDENA STREET
 WIEHE AVE. TO RALEIGH ST.
 HORIZ. SCALE: 1" = 40' VERT. SCALE: 1" = 4'

REVISIONS		DESCRIPTION
MARK	DATE	
#	8-20-68	Corrected Sta. on Wiehe Ave. and Change on 3rd Street, Layout on Wiehe Ave. to Garden St.
R	8/15/65	Added Gas Main on Wiehe Ave.

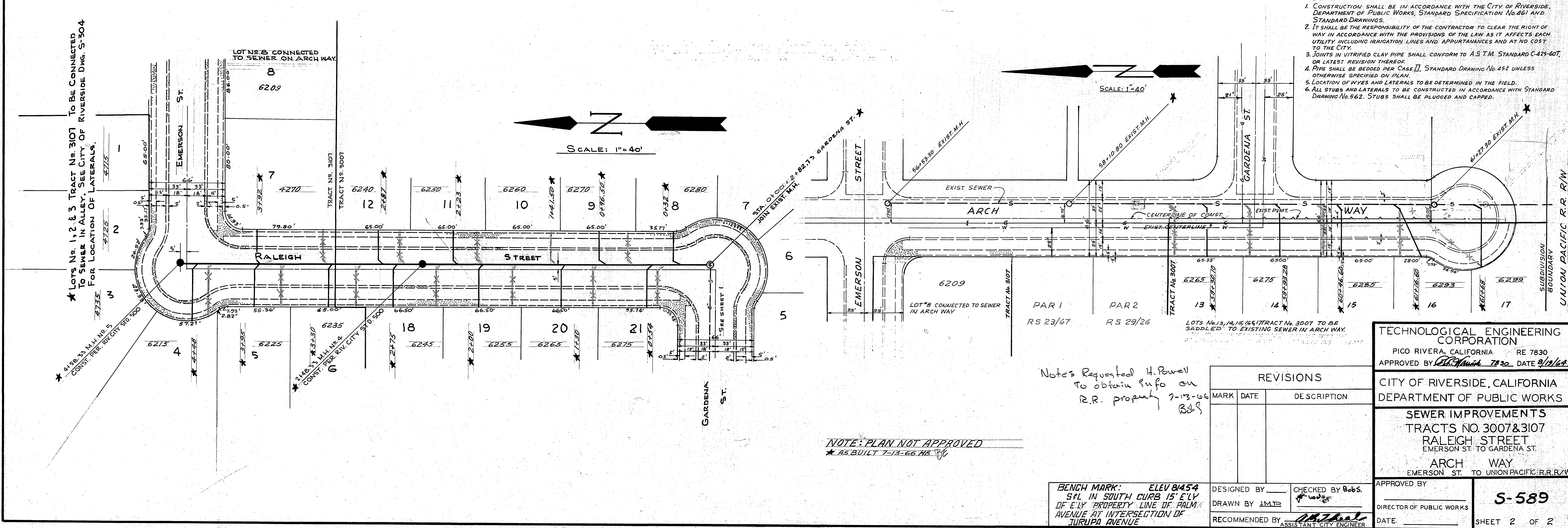
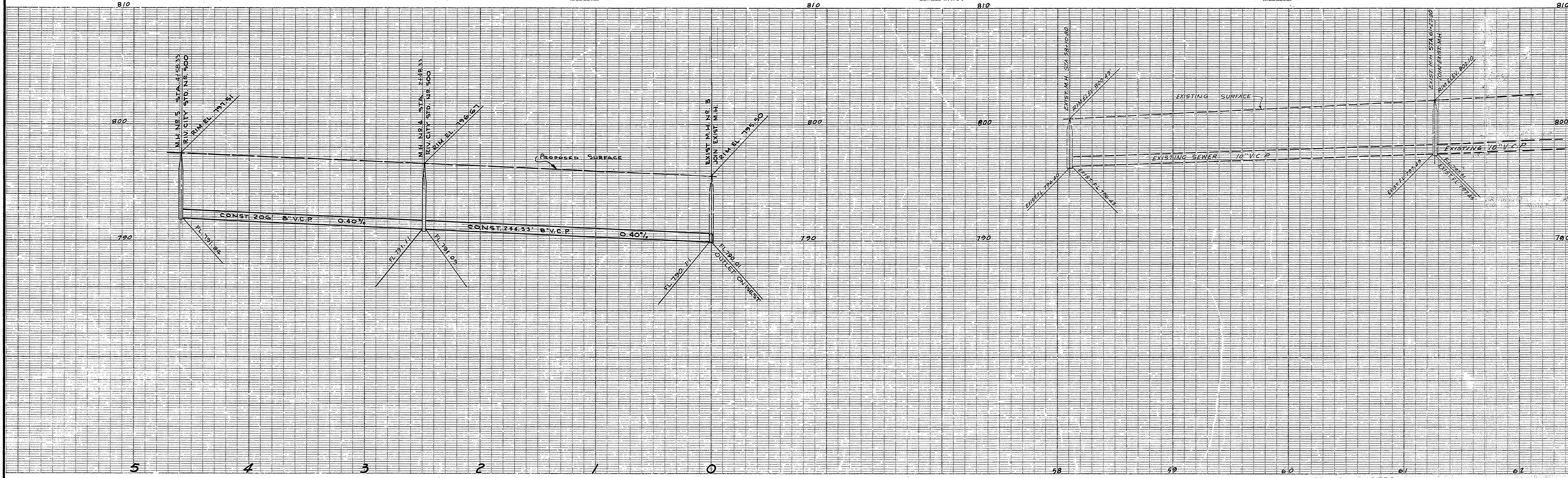
DESIGNED BY _____ CHECKED BY B.O.S.
 DRAWN BY J.M.P. *J.M.P.*
 RECOMMENDED BY *Ed. Arnold* ASSISTANT CITY ENGINEER

APPROVED BY *Ed. Arnold* DIRECTOR OF PUBLIC WORKS
 DATE 3-15-65

BENCH MARK ELEV 814.54
 5' ELY IN SOUTH CURB 15' ELY OF ELY PROPERTY LINE OF PALM AVENUE AT INTERSECTION OF JURUPA AVENUE

AS BUILT 12-7-65 HB

S-589
 SHEET 1 OF 2



- GENERAL NOTES:**
1. CONSTRUCTION SHALL BE IN ACCORDANCE WITH THE CITY OF RIVERSIDE, DEPARTMENT OF PUBLIC WORKS, STANDARD SPECIFICATION No. 461 AND STANDARD DRAWINGS.
 2. IT SHALL BE THE RESPONSIBILITY OF THE CONTRACTOR TO CLEAR THE RIGHT OF WAY IN ACCORDANCE WITH THE PROVISIONS OF THE LAW AS IT AFFECTS EACH UTILITY INCLUDING IRRIGATION LINES AND APPURTANANCES AND AT NO COST TO THE CITY.
 3. JOINTS IN VITRIFIED CLAY PIPE SHALL CONFORM TO A.S.T.M. STANDARD C-425-60T, OR LATEST REVISION THEREOF.
 4. PIPE SHALL BE BEDDED PER CASE II, STANDARD DRAWING No. 452 UNLESS OTHERWISE SPECIFIED ON PLAN.
 5. LOCATION OF WYES AND LATERALS TO BE DETERMINED IN THE FIELD.
 6. ALL STUBS AND LATERALS TO BE CONSTRUCTED IN ACCORDANCE WITH STANDARD DRAWING No. 562. STUBS SHALL BE PLUGGED AND CAPPED.

Note: Requested H. Powell to obtain info on R.R. property 7-13-66 BJS

NOTE: PLAN NOT APPROVED
 * AS BUILT 7-13-66 HB

BENCH MARK: ELEV 845.4
 SFL IN SOUTH CURB 15' ELY
 OF ELY PROPERTY LINE OF PALM
 AVENUE AT INTERSECTION OF
 TURUPA AVENUE

REVISIONS	
MARK	DATE

TECHNOLOGICAL ENGINEERING CORPORATION
 PICO RIVERA, CALIFORNIA RE 7830
 APPROVED BY: [Signature] 7/30/67 DATE 9/19/67

CITY OF RIVERSIDE, CALIFORNIA
 DEPARTMENT OF PUBLIC WORKS

SEWER IMPROVEMENTS
 TRACTS NO. 3007 & 3107
 RALEIGH STREET
 EMERSON ST. TO GARDENA ST.
 ARCH WAY
 EMERSON ST. TO UNION PACIFIC R.R. R/W

APPROVED BY: [Signature]
 DIRECTOR OF PUBLIC WORKS

DATE: _____ SHEET 2 OF 2

S-589