

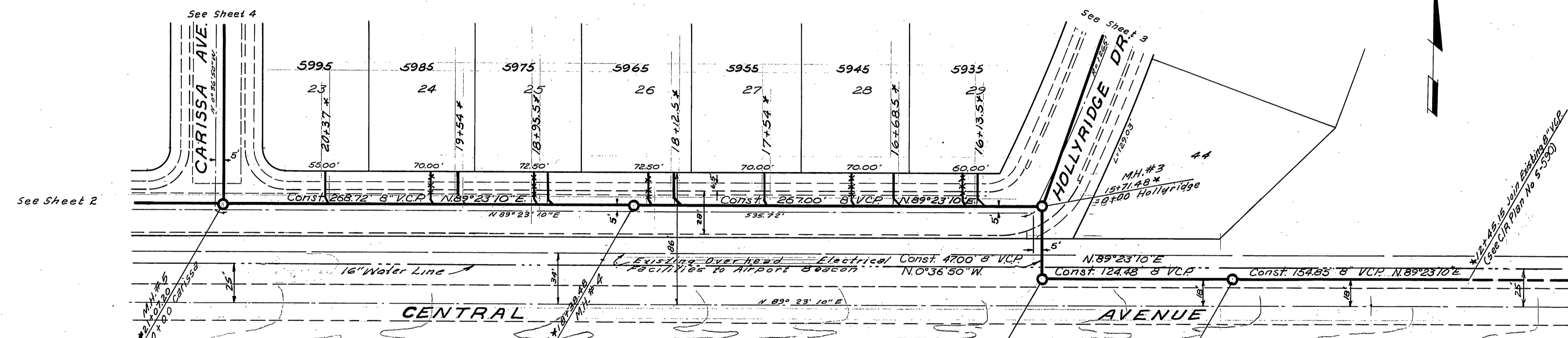
PROFILE	SUBMITTED	DATE
PLANNED	DATE	
NOTED	DATE	
APPROVED	DATE	
SYMBOLS	DATE	

SCALE: HORIZ. 1"=50'
VERT. 1"=10'

BENCH MARK F.B. 559/6
1. Elev. 810.01 Brass cap in 2" I.P. & Central @ 13+31.03
2. Elev. 833.96 Brass cap in 2" I.P. & Central @ 26+62.30

GENERAL NOTES:

- It shall be the responsibility of the contractor to clear the right of way in accordance with the provisions of law as it affects each utility including irrigation lines and appurtenances and at no cost to the City.
- Construction shall be in accordance with the City of Riverside, Department of Public Works, Specifications No. 461 and standard Drawings.
- Joints in Vitrified Clay Pipe sewer shall conform to ASTM Standard C-425-60T, or the latest revision thereof.
- Pipe shall be bedded per Case II, Standard Drawing No. 452, unless otherwise specified on plan.
- Location of wyes and laterals to be determined in the field.
- NOTICE TO CONTRACTOR:** The existence and location of any underground utility pipes or structures shown on these plans are obtained by a search of the available records. To the best of our knowledge, there are no existing utilities, except as shown on these plans. The Contractor is required to take due precautionary measures to protect the utility lines shown and any other lines not of record or not shown on these plans.



QUANTITY ESTIMATE

8" Vitrified Clay Pipe	3,021 LF
4" Vitrified Clay Pipe	1,285 LF
Manhole Standard Dwg. No. 500	13 Ea.
Cleanout Standard Dwg. No. 560	2 Ea.
4"x8" Wyes	44 Ea.

REVISIONS	
MARK	DESCRIPTION

INDEXED P.R.
ALBERT A. WEBB ASSOCIATES
CIVIL ENGINEERS
RIVERSIDE CALIFORNIA

CITY OF RIVERSIDE CALIFORNIA
DEPARTMENT OF PUBLIC WORKS
SEWER PLAN & PROFILE
CENTRAL AVENUE

TRACT NO. 3025

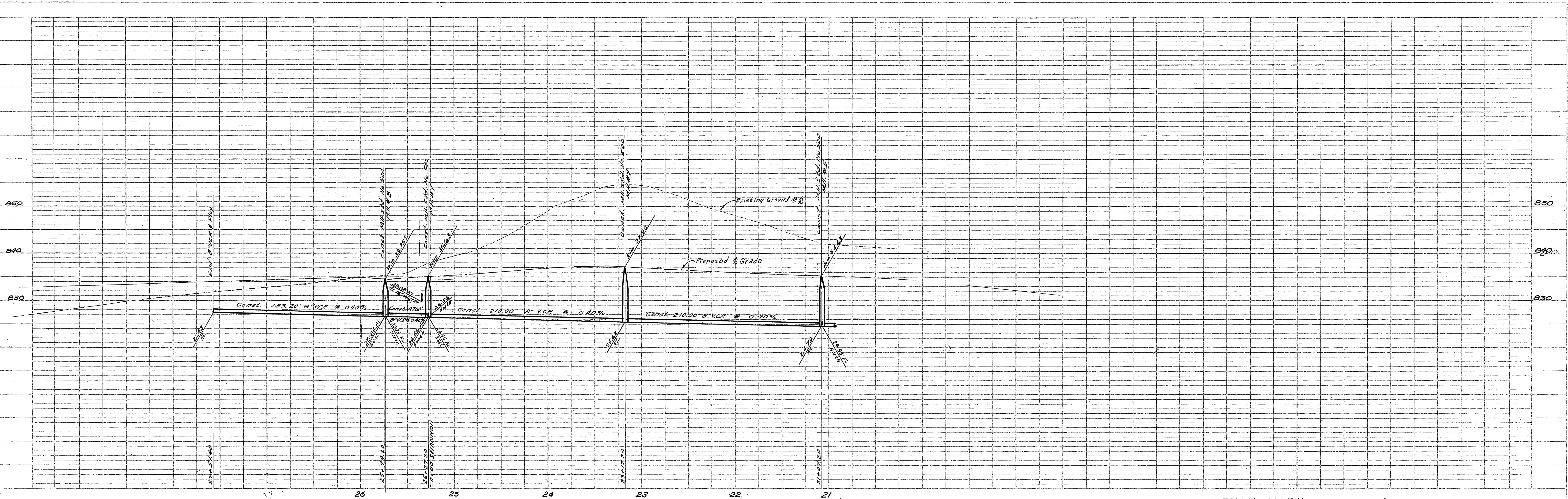
DESIGNED BY REC
DRAWN BY BEL
RECOMMENDED BY DATE 11/2/64

CHECKED BY Bob. J. O'NEILL
APPROVED BY [Signature]
DIRECTOR OF PUBLIC WORKS
DATE 2-8-65

S-591
SHEET 1 OF 4

DWG. NO. 64-174-B

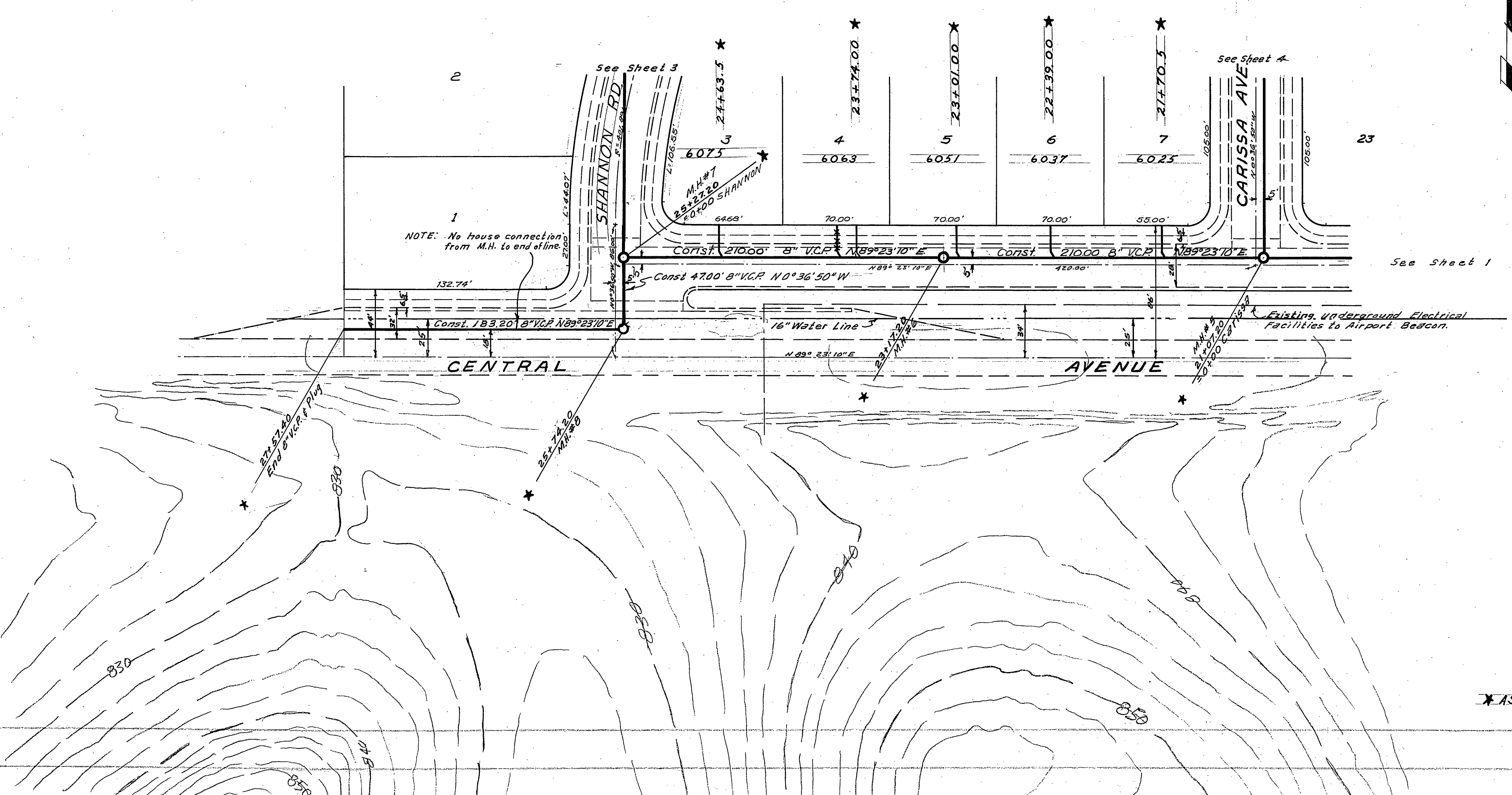
PLAN	SUBMITTED	DATE
PLANNED	DATE	
NOTED	DATE	
APPROVED	DATE	
SYMBOLS	DATE	



PROFILE	DATE
DESIGNED BY	
DRAWN BY	
CHECKED BY	
APPROVED BY	

SCALE: HORIZ. 1" = 50'
 VERT. 1" = 10'

BENCH MARK FB 559/6
 1. Elev. 818.81 Brass cap in 2" I.P. & Central @ 13+31.03.
 2. Elev. 833.96 Brass cap in 2" I.P. & Central @ 26+62.30.



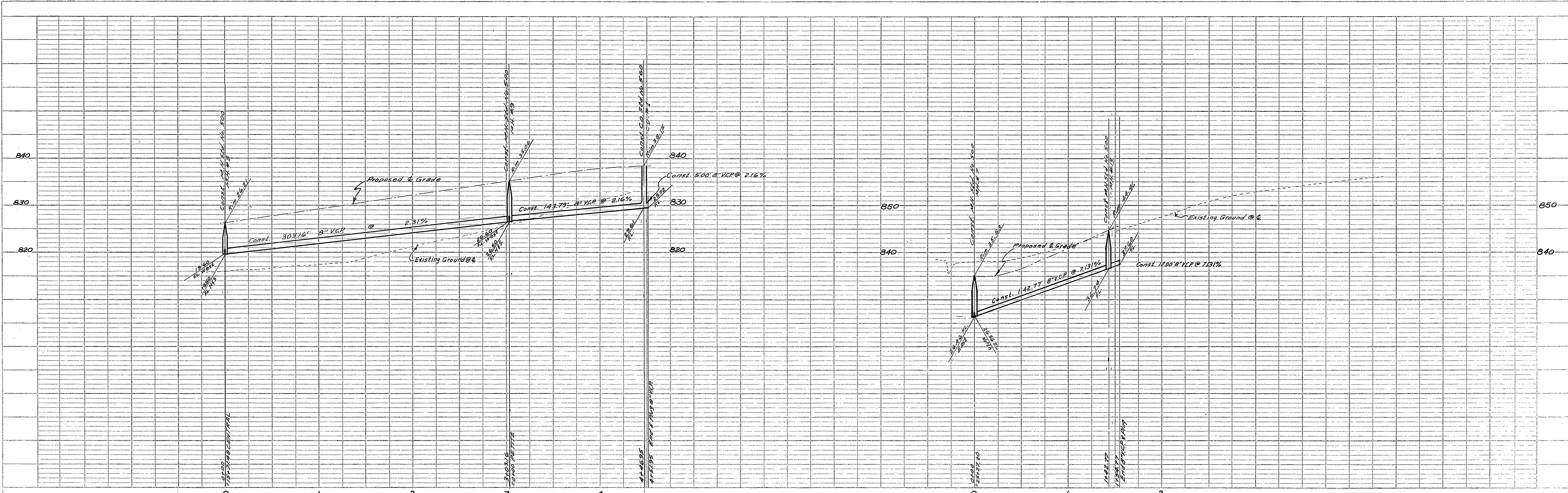
PLAN	DATE
DESIGNED BY	
DRAWN BY	
CHECKED BY	
APPROVED BY	

ALBERT A. WEBB ASSOCIATES
 CIVIL ENGINEERS
 RIVERSIDE CALIFORNIA

REVISIONS		CITY OF RIVERSIDE CALIFORNIA DEPARTMENT OF PUBLIC WORKS
MARK	DATE	
		SEWER PLAN & PROFILE
		CENTRAL AVENUE
		TRACT NO. 3025
DESIGNED BY REC	CHECKED BY Bob. # [Signature]	APPROVED BY [Signature]
DRAWN BY BEL		DIRECTOR OF PUBLIC WORKS
RECOMMENDED BY [Signature]	DATE 11/6/64	DATE 2-8-65
		SHEET 2 OF 4

* AS BUILT 3/25/66 JRM/AB

DWG. No. G4-174-B

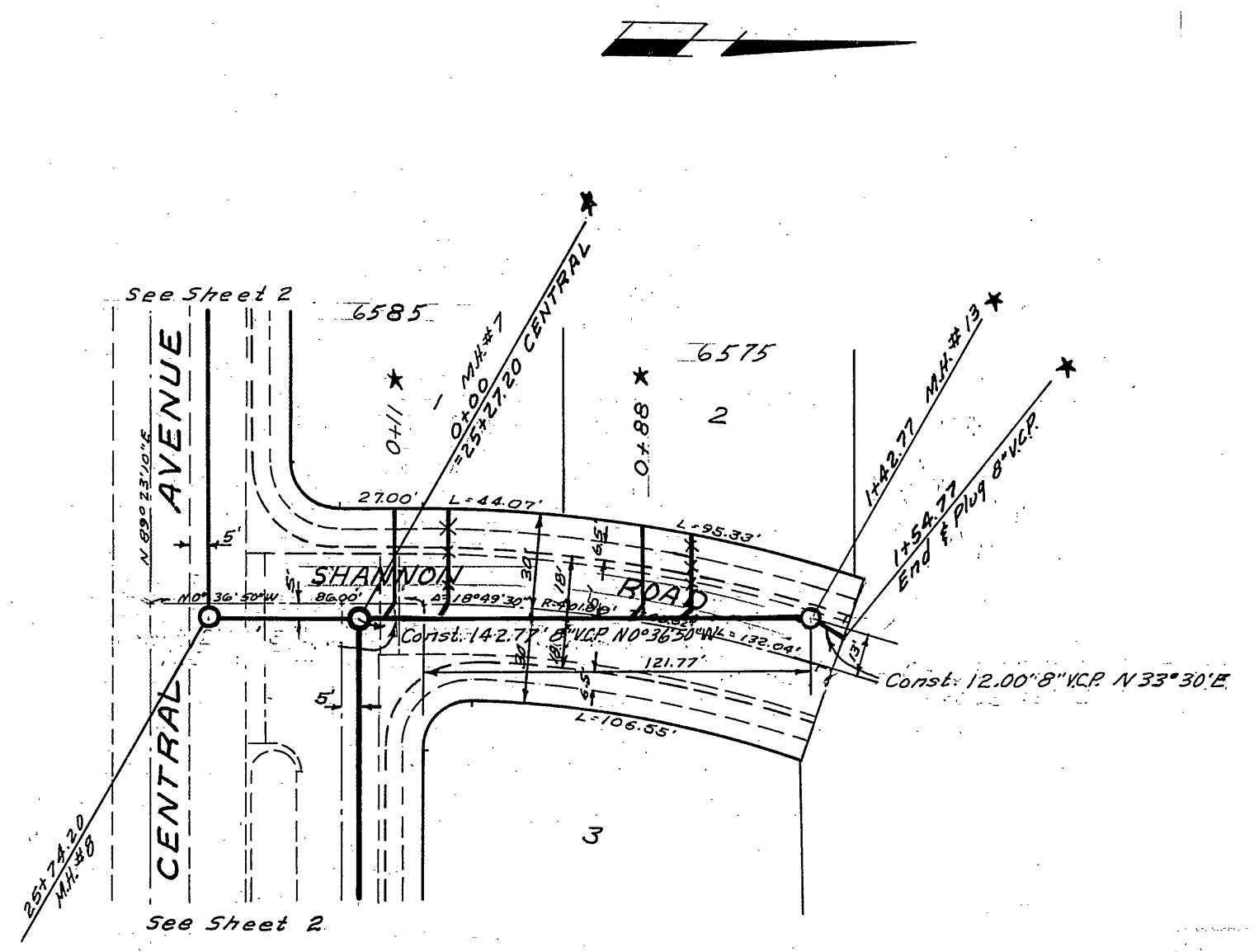
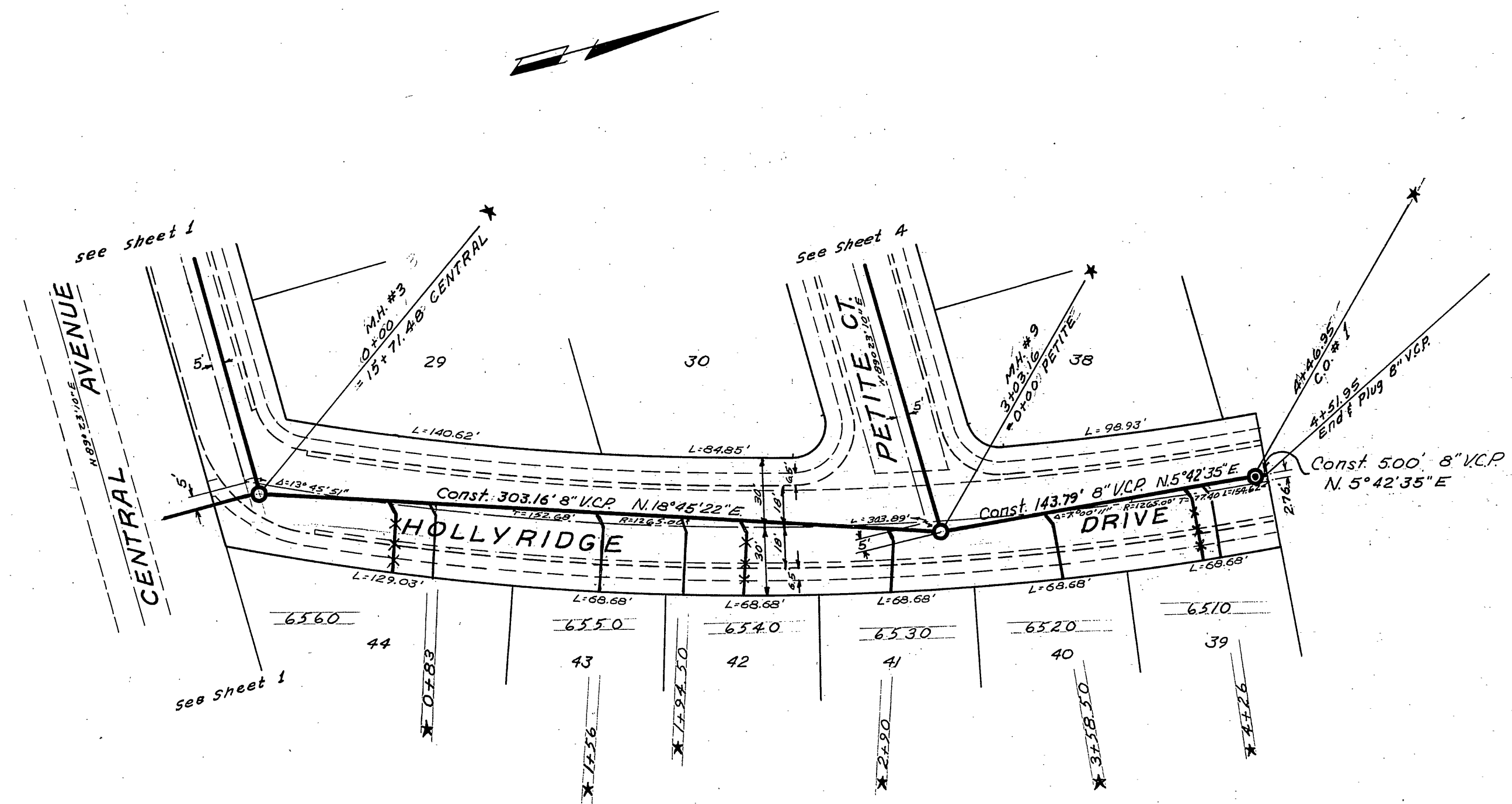


SCALE: HORIZ. 1"=50'
VERT. 1"=10'

BENCH MARK F.B. 559/G
1. Elev 818.81 Brass cap in 2" I.P. & Central @ 13+31.03.
2. Elev 833.96 Brass cap in 2" I.P. & Central @ 26+62.30.

PROFILE	SURVEYED	BY	DATE
NOTE BOOK	PLOTTED		
	ASSEMBLED		
	STAMPED		

PLAN	SURVEYED	DATE
NOTE BOOK	PLOTTED	
	ASSEMBLED	
	STAMPED	

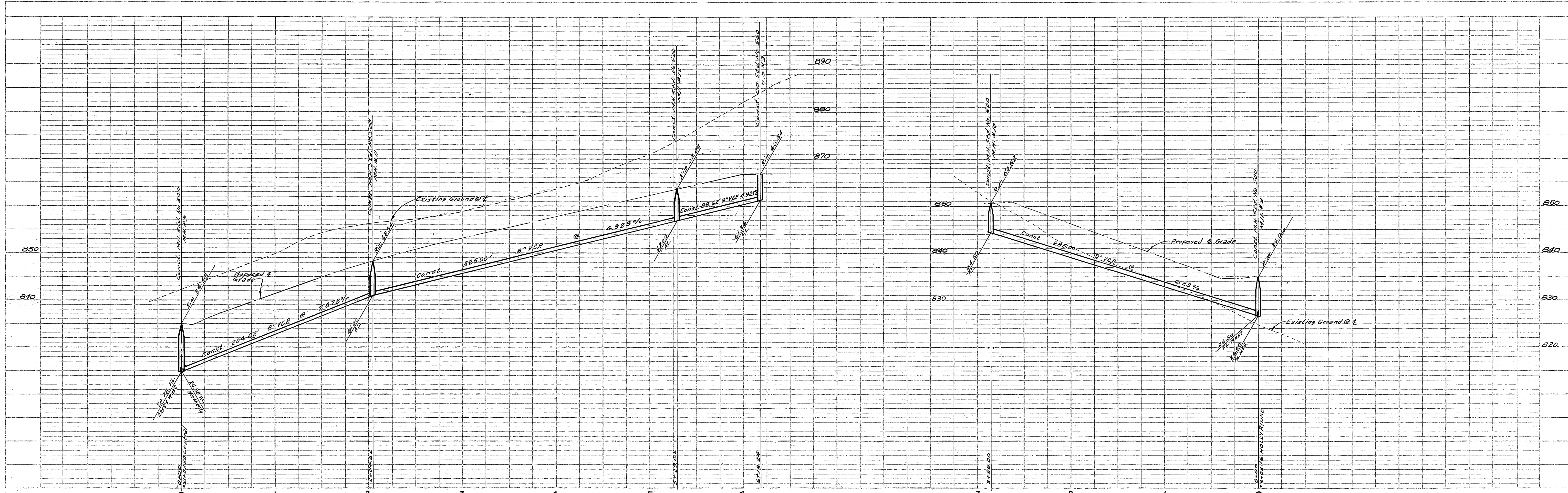


ALBERT A. WEBB ASSOCIATES
CIVIL ENGINEERS
RIVERSIDE CALIFORNIA

REVISIONS		CITY OF RIVERSIDE CALIFORNIA DEPARTMENT OF PUBLIC WORKS
MARK	DATE	

DESIGNED BY R.E.C.	CHECKED BY Bob # 113	APPROVED BY <i>[Signature]</i>
DRAWN BY BEL	DATE 1/9/66	DIRECTOR OF PUBLIC WORKS
		DATE 2-8-65

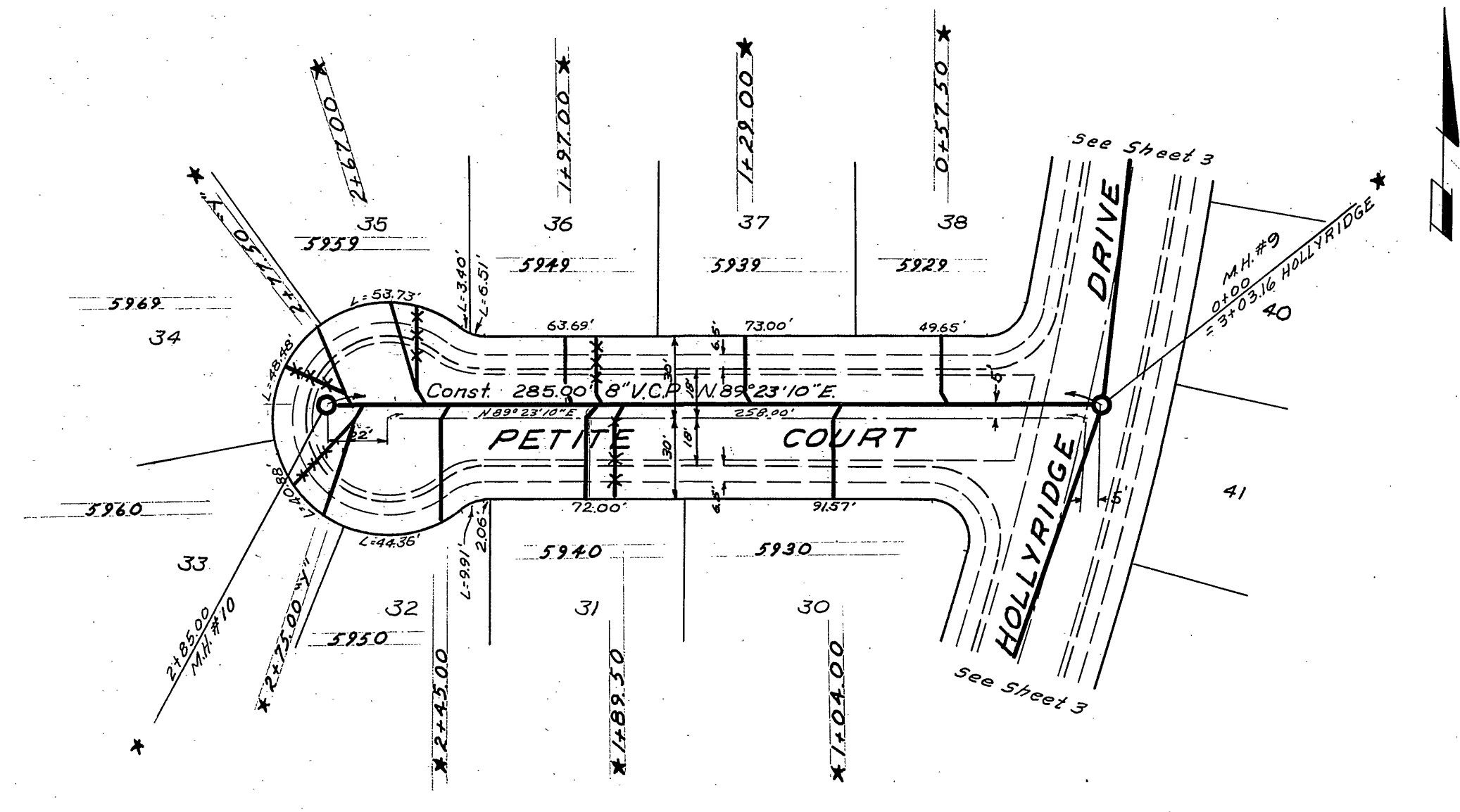
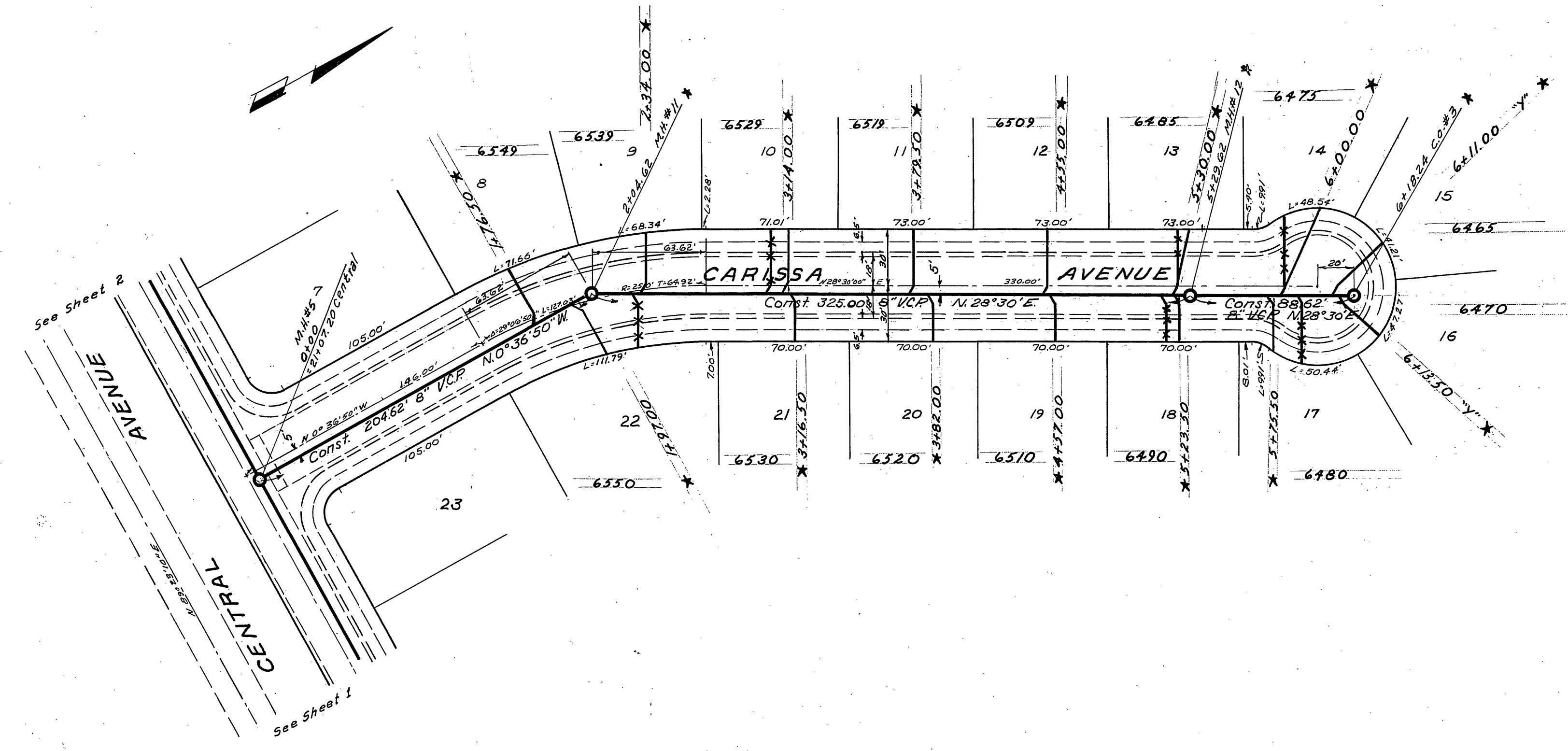
S-591



PROFILE SHEET NO.	DATE
BY	
REVISIONS	
NO.	DESCRIPTION

SCALE: HORIZ. 1"=50'
VERT. 1"=10'

BENCH MARK F.B. 5591G
1. Elev. 818.81 Brass cap in 2" I.P. & Central @ 13+31.03.
2. Elev. 833.96 Brass cap in 2" I.P. & Central @ 26+62.30.



ALBERT A. WEBB ASSOCIATES
CIVIL ENGINEERS
RIVERSIDE CALIFORNIA

REVISIONS		CITY OF RIVERSIDE CALIFORNIA DEPARTMENT OF PUBLIC WORKS
MARK	DATE	
		SEWER PLAN & PROFILE
		CARISSA AVENUE
		AND
		PETITE COURT
		TRACT NO. 3025
DESIGNED BY REC	CHECKED BY wdg	APPROVED BY
DRAWN BY B.E.L.	Bo. J. OHO	<i>Albert A. Webb</i>
DATE 11/6/64	RE 9076	DIRECTOR OF PUBLIC WORKS
		DATE 2-8-65

PLAN SHEET NO.	DATE
BY	
REVISIONS	
NO.	DESCRIPTION

* AS BUILT 3/28/66 gpm/ab