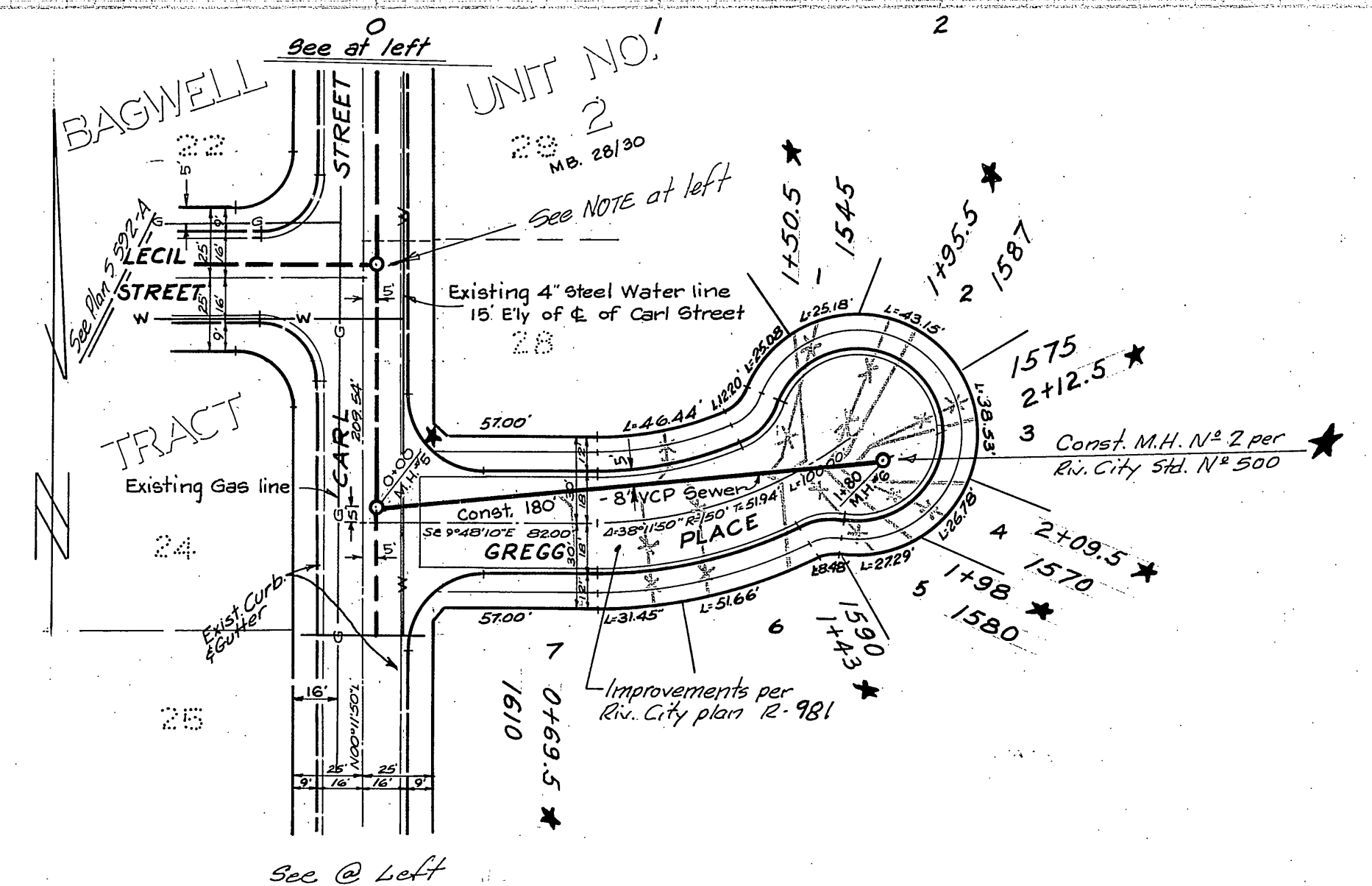
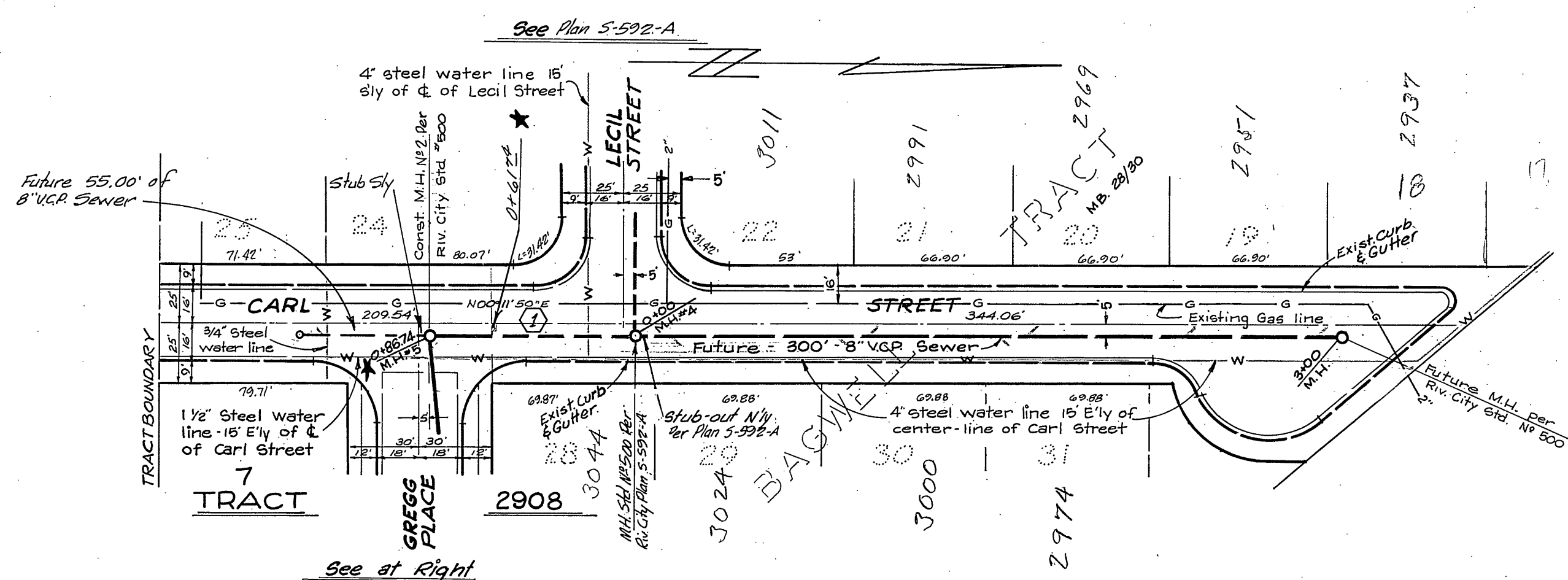


GENERAL NOTES:

1. Const. shall be in accordance with the City of Riverside Department of Public Works Standard Specifications N^o 461 and Standard Drawings.
2. It shall be the responsibility of the contractor to clear the right of way in accordance with the provisions of the law as it affects each utility including the irrigation lines and appurtenances and at no cost to the City.
3. Joints in Vitriol Clay Pipe sewers shall conform to A.S.T.M. Standard C-425-60T or the latest revision thereof.
4. Pipe shall be bedded per Case II, Std. drawing N^o 452 unless otherwise specified on plan.
5. Location of wyes and laterals to be determined in the field.
6. Const. M.H. Rims to meet exist paving except where otherwise noted.
7. GAS - Call Southern California Gas Co. prior to excavating.
8. WATER - Location of water lines to be verified in the field prior to any excavation.



BENCH MARK
 3/4" IN HEADWALL OF CULVERT,
 SE CORNER MASS & CHICAGO
 ELEV. 931.35
 T.B.M. "A" Chiseled on top of curb, West
 side of Carl St. 19' S of E.C. of S.W.
 corner of Carl and Leclic Streets, 940, 95

J. F. DAVIDSON ASSOCIATES CIVIL ENGINEERS - SURVEYORS - PLANNERS RIVERSIDE, CALIFORNIA APPROVED BY <i>George E. McCarty</i> DATE 10/29/64 R.E. No. 12688 W.G. 125 FOR: PHIL DREYER F.B. 903	(1) No. 28134 9/11 2-17-65	CITY OF RIVERSIDE, CALIFORNIA DEPARTMENT OF PUBLIC WORKS		SEWER PLAN AND PROFILE TRACT 2908 OFF SITE AND ON SITE SEWER	PROJECT NO. S-592
		APPROVED BY <i>[Signature]</i> OFFICE ENGINEER PARK DEPARTMENT TRAFFIC DIVISION ASSISTANT CITY ENG.	BY DATE <i>[Signature]</i> 11/18 DIRECTOR OF PUBLIC WORKS	DATE 1-19-65	HORIZ. SCALE: 1" = 50' VERT. SCALE: 1" = 5'

★ AS BUILT 7-20-65 HB