

**GENERAL NOTES**

1. Construction shall be in accordance with the City of Riverside Department of Public Works, Standard Specifications No. 461 and Standard Drawings.
2. It shall be the responsibility of the contractor to clear the right of way in accordance with the provisions of the law as it affects each utility including irrigation lines and appurtenances and at no cost to the city.
3. Joints in vitrified clay pipe sewer shall conform to A.S.T.M. Standard No. C-425-60T, or the latest revision thereof.
4. Pipe shall be bedded per Case II, Standard Drawing No. 452, unless otherwise specified on plan.
5. Location of wyes and laterals to be determined in the field.
6. The existence and location of any underground utility pipes or structures shown on these plans are obtained by a search of the available records. To the best of our knowledge, there are no existing utilities except as shown on these plans.

**BENCH MARK:**

F.B. 549/1A, Elev. 1236.61 Chisel # on North end of NW corner Ransom Rd. & Shaker

**QUANTITY ESTIMATE**

Manhole Standard No. 500 \_\_\_\_\_ 15 Ea.  
 8" Vitrified Clay Pipe \_\_\_\_\_ 3,457 LF  
 4" Vitrified Clay Pipe \_\_\_\_\_ 1,526 LF  
 8"x4" Wyes \_\_\_\_\_ 44 Ea.  
 Clean-out Standard No. 560 \_\_\_\_\_ 2 Ea.



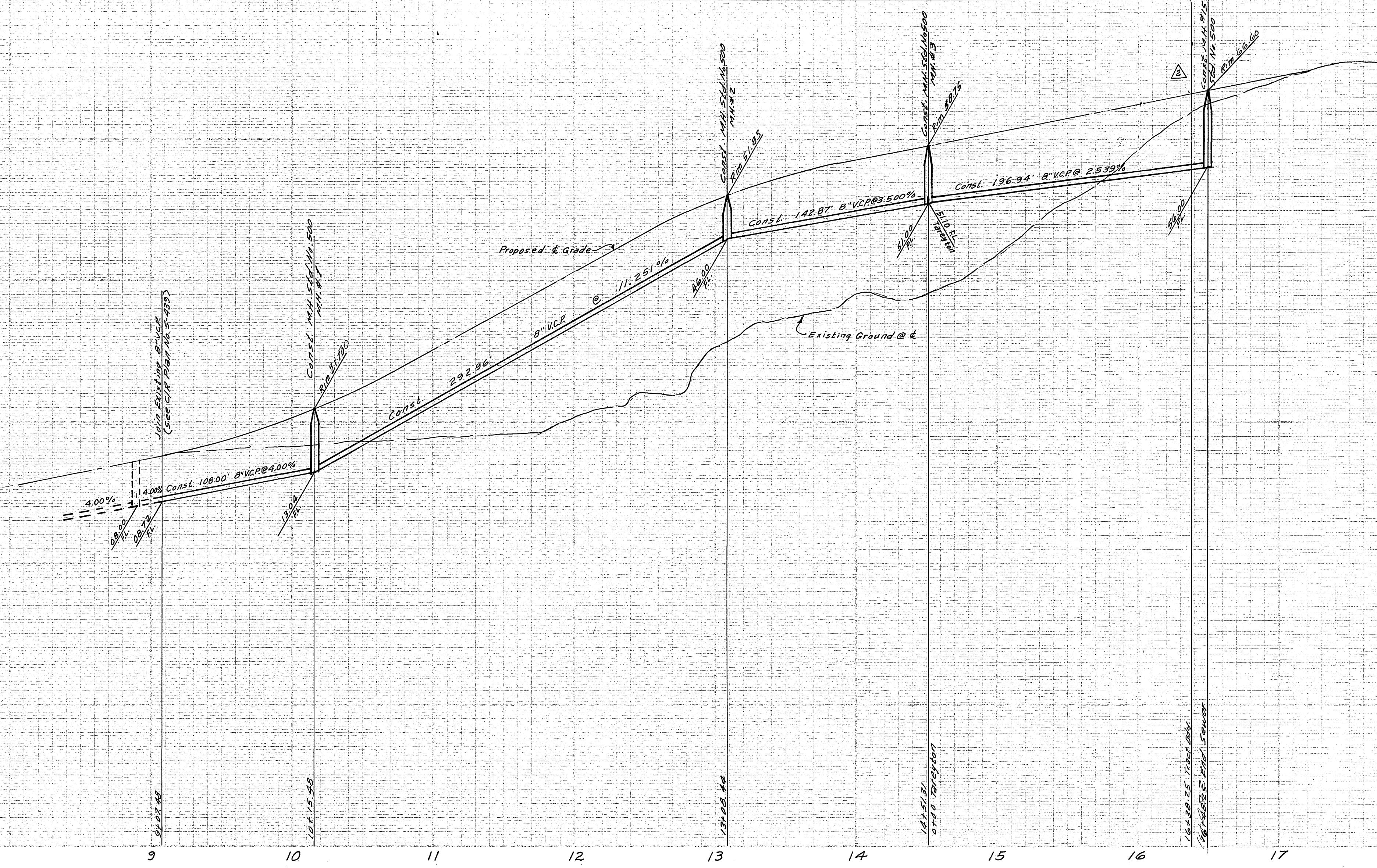
ALBERT A. WEBB ASSOCIATES CIVIL ENGINEERS RIVERSIDE, CALIFORNIA APPROVED BY: <i>[Signature]</i> DATE: 11-5-64 R.E. No. 9976	Revised Tract No. 3824 REMOVED 1 CO. 4" REMOVED 1 M.H. FROM QUANTITY EST. Bob S. Hays, C.E.	CITY OF RIVERSIDE, CALIFORNIA DEPARTMENT OF PUBLIC WORKS APPROVED BY: <i>[Signature]</i> BY: <i>[Signature]</i> DATE: 2-9-65 OFFICE ENGINEER PARK DEPARTMENT TRAFFIC DIVISION ASSISTANT CITY ENG.	SEWER PLAN & PROFILE INDEX SHEET TRACT No. 3824 ☆ ☆	PROJECT NO. 64-270 S-593 SHEET 1 OF 5 FILE NO. 64-270 B
	W.O. 64-270 FOR: Hicks-Bodman Inc. F.B. 549 DESIGNED BY: REC. DRAWN BY: DEL. CHECKED BY: Bob S. Hays	REVISIONS APPR. DATE MARK	DATE: 2-9-65	HORIZ. SCALE: 1"=80' VERT. SCALE: 1"=80'

1320

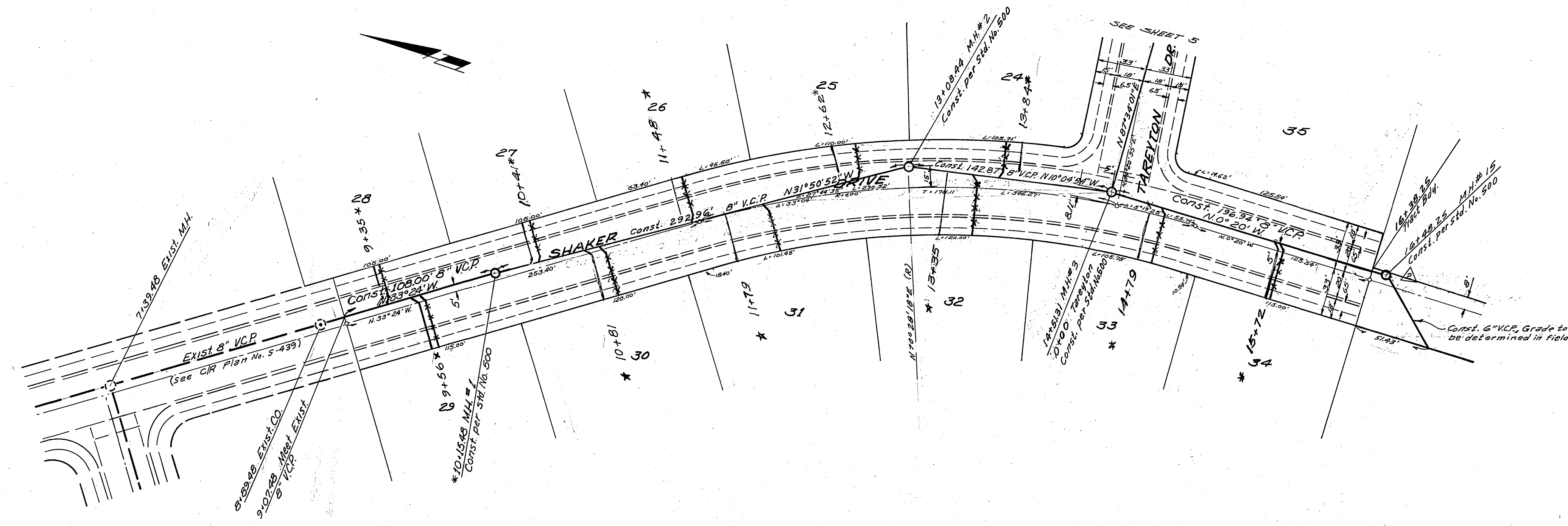
1300

1360

1340

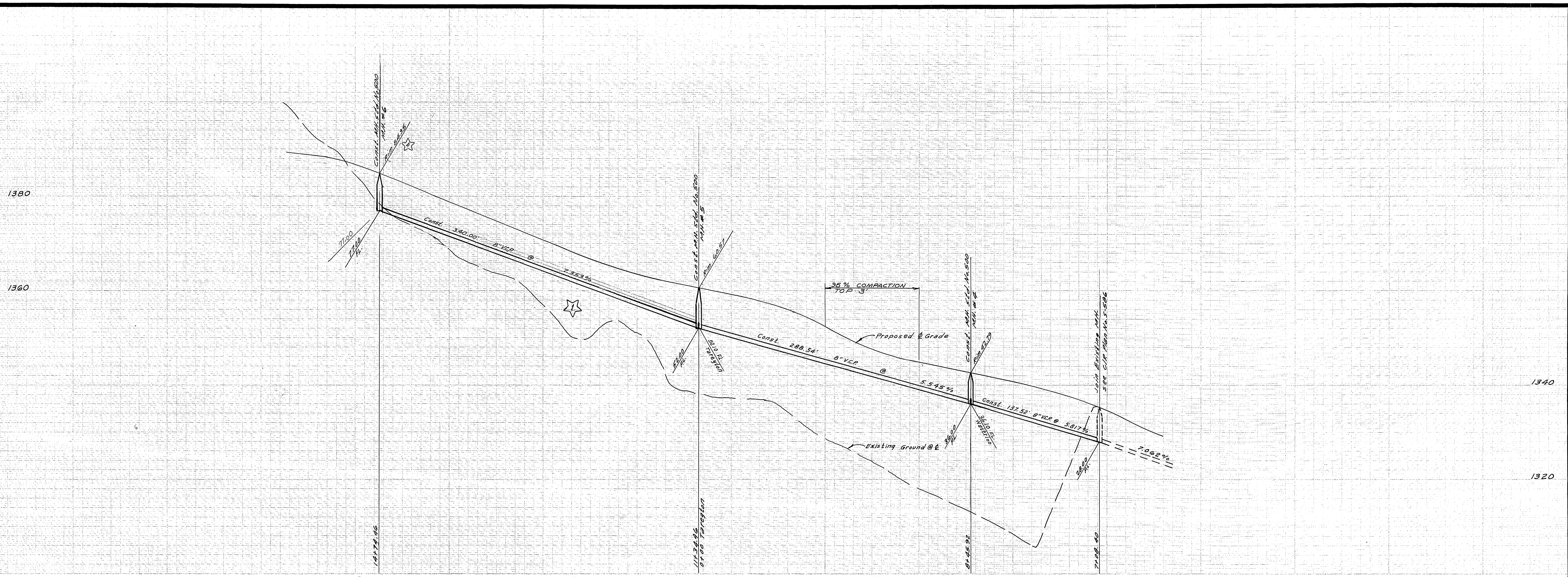


**BENCH MARK:**  
 FB.549/14, Elev. 1236.61 chisel # on North end of NW corner Ransom & Shaker.

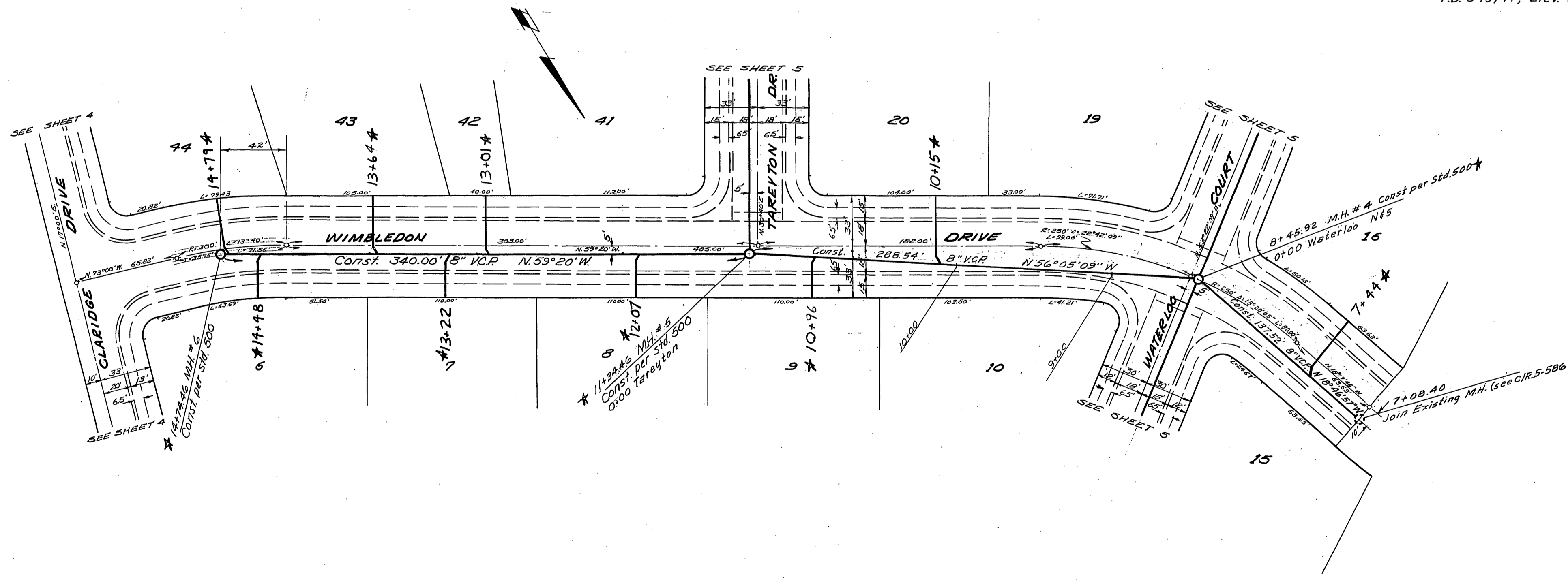


\* AS BUILT 12-23-66 100'

ALBERT A. WEBB ASSOCIATES CIVIL ENGINEERS RIVERSIDE, CALIFORNIA APPROVED BY: <i>[Signature]</i> DATE 11-5-68 R.E. No. 9875 W.O. 64-270 FOR: Hicks-Badrain Inc. F.B. 549	CITY OF RIVERSIDE, CALIFORNIA DEPARTMENT OF PUBLIC WORKS APPROVED BY: <i>[Signature]</i> DATE 2-9-68 OFFICE ENGINEER: <i>[Signature]</i> DATE 2-8-68 PARK DEPARTMENT: <i>[Signature]</i> DATE 1-7-68 TRAFFIC DIVISION: <i>[Signature]</i> DATE 1-7-68 ASSISTANT CITY ENG.: <i>[Signature]</i> DATE 1-7-68	SEWER PLAN & PROFILE <b>SHAKER DRIVE</b> TRACT No. 3824	PROJECT NO. 64-270 <b>S-593</b> SHEET 2 OF 5
		HORIZ. SCALE: 1" = 50' VERT. SCALE: 1" = 10'	FILE NO. 64-270 B

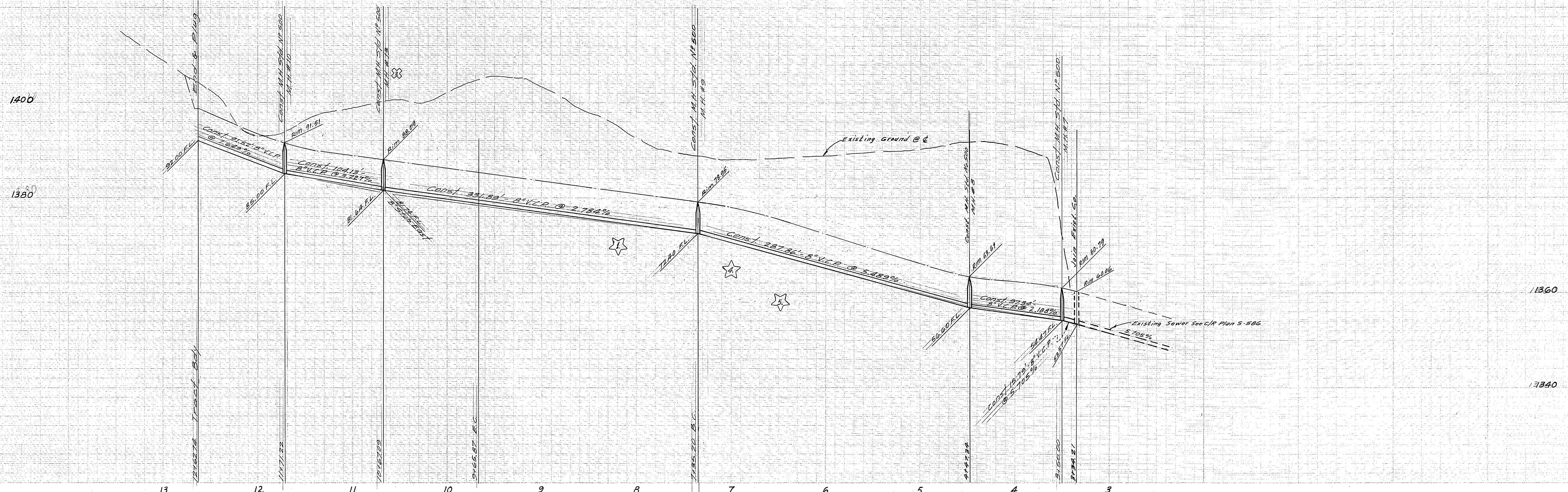


**BENCH MARK:**  
 F.B. 54914, Elev. 1236.61 Chisel a on North end of N.W. corner Ransom & Shaker.

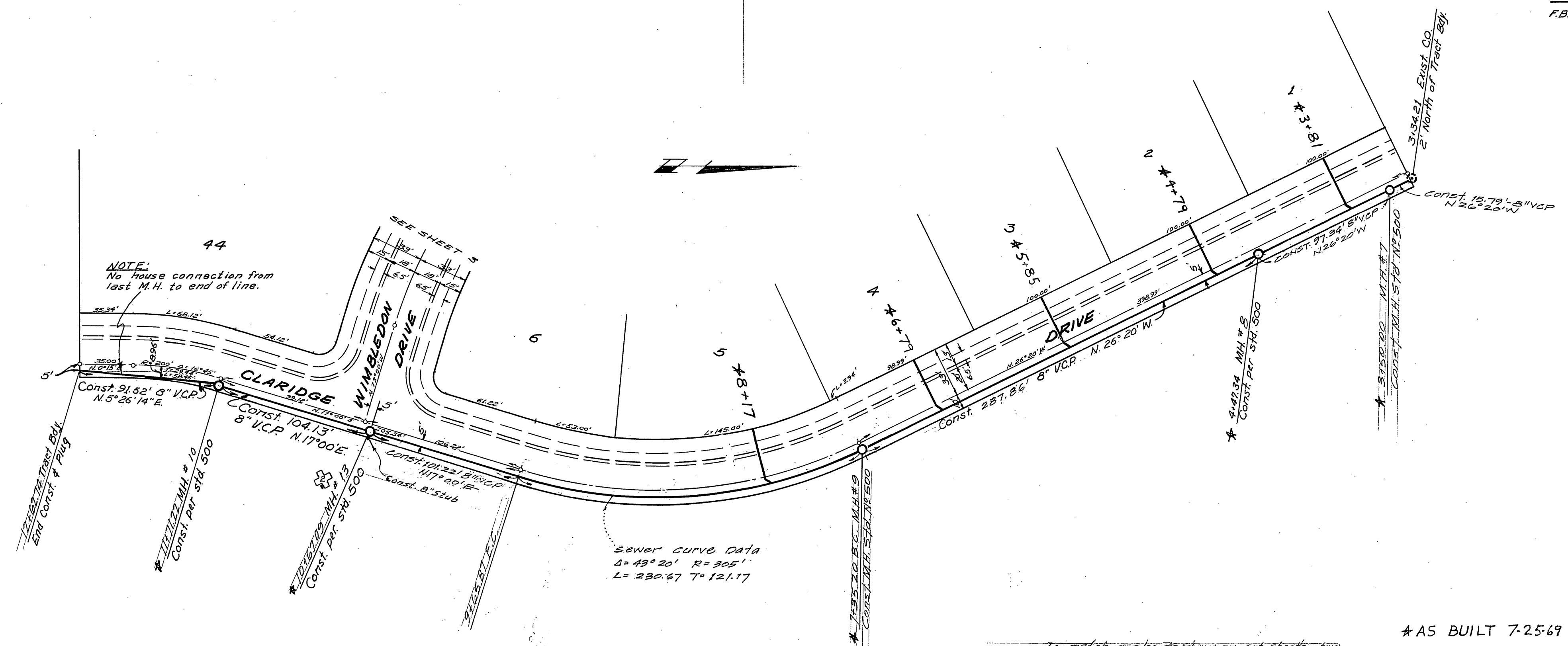


\* AS BUILT 7-25-69 B.M.

ALBERT A. WEBB ASSOCIATES CIVIL ENGINEERS RIVERSIDE, CALIFORNIA APPROVED BY: <i>[Signature]</i> DATE: 11-5-68 R.E. No. 9976 W.O. 64-270 FOR: Hicks-Badrone Inc. F.B. 549	CITY OF RIVERSIDE, CALIFORNIA DEPARTMENT OF PUBLIC WORKS APPROVED BY: <i>[Signature]</i> BY: <i>[Signature]</i> DATE: 2-8-68 OFFICE ENGINEER PARK DEPARTMENT TRAFFIC DIVISION ASSISTANT CITY ENG.	SEWER PLAN & PROFILE PROJECT NO. 64-270
		WIMLEDON DRIVE TRACT No. 3824 SHEET 3 OF 5 HORIZ. SCALE: 1" = 50' VERT. SCALE: 1" = 10'

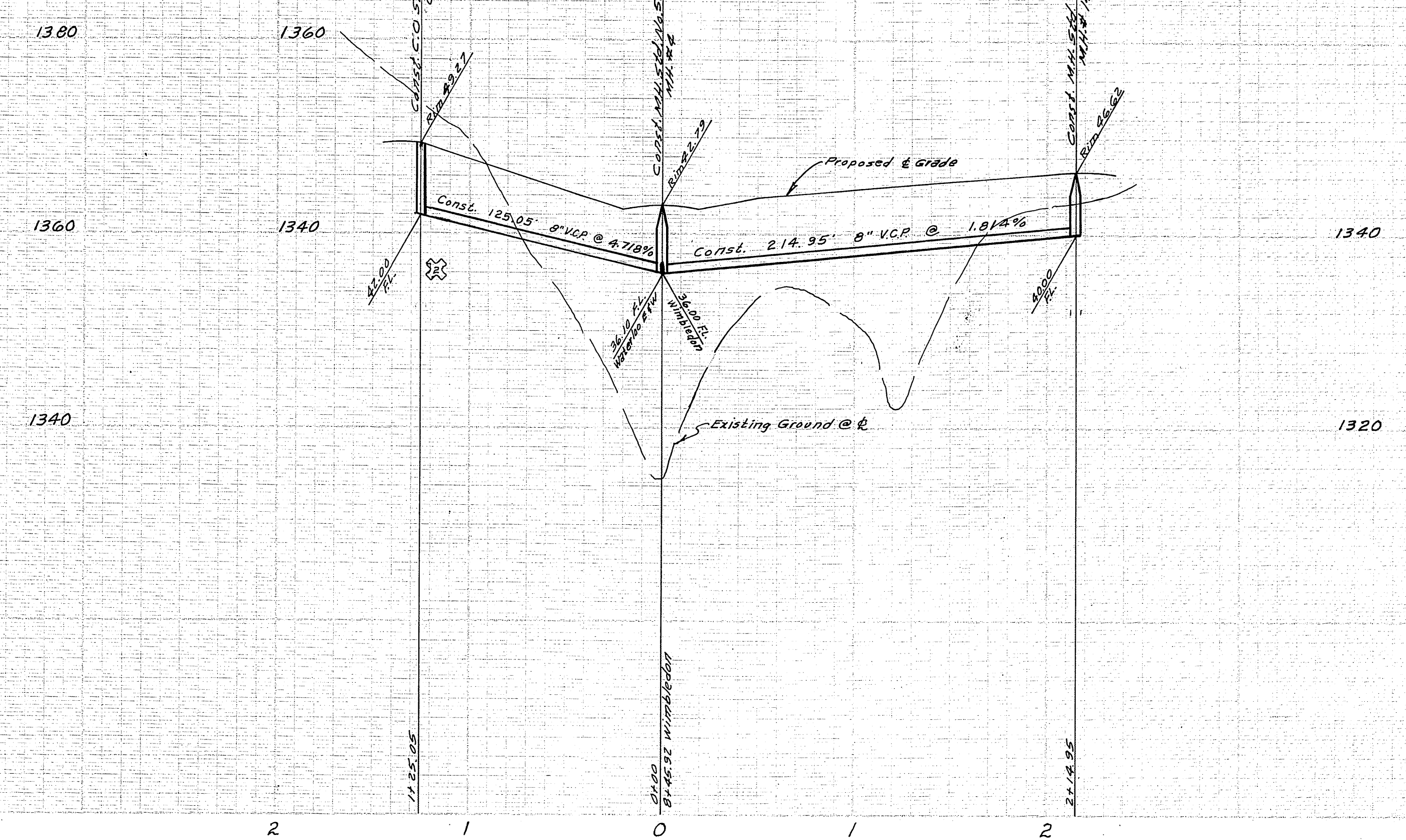
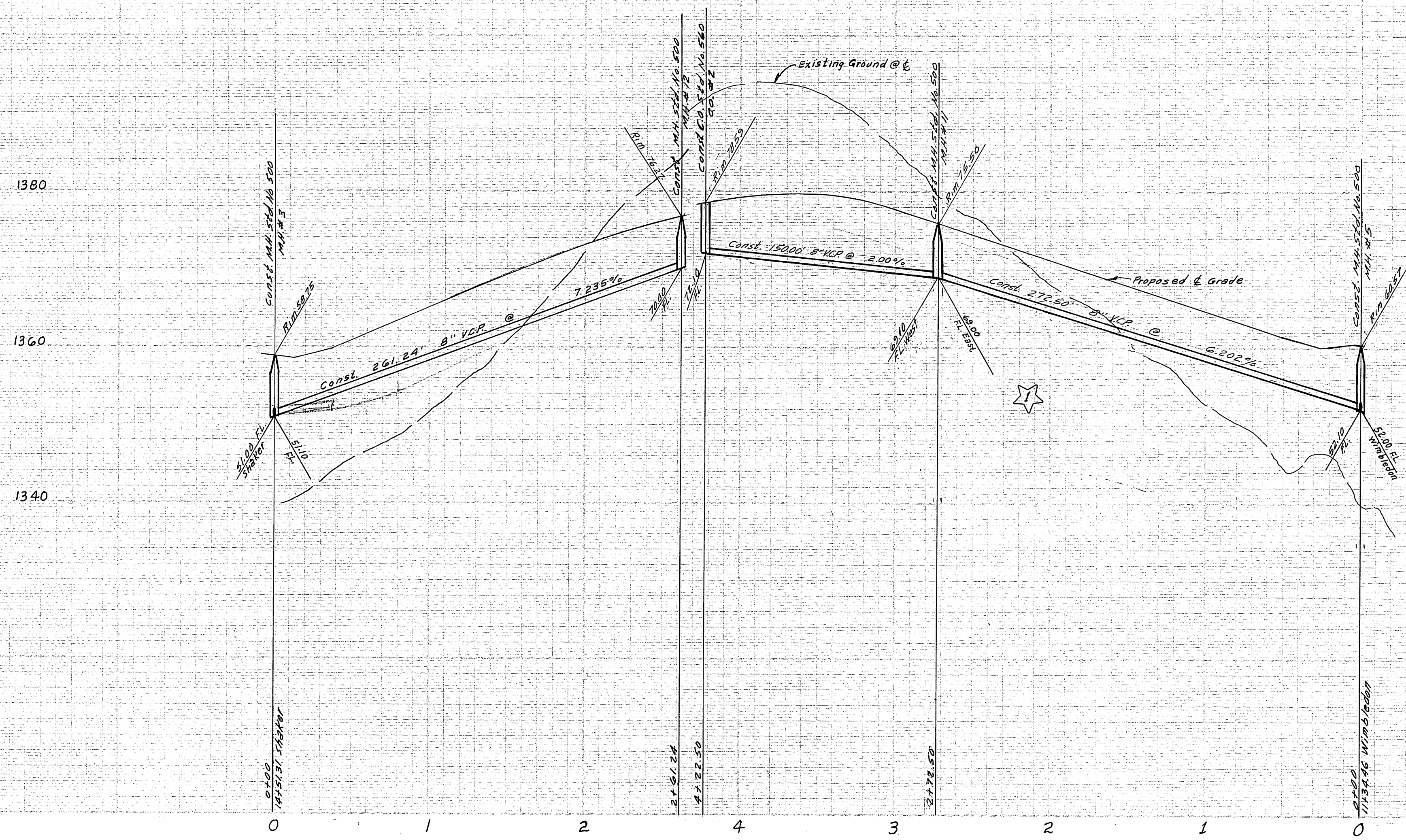


**BENCH MARK:**  
 F.B. 549/14, Elev. 1236.61 chisel a on North end of N.W. corner Ransom & Shaker

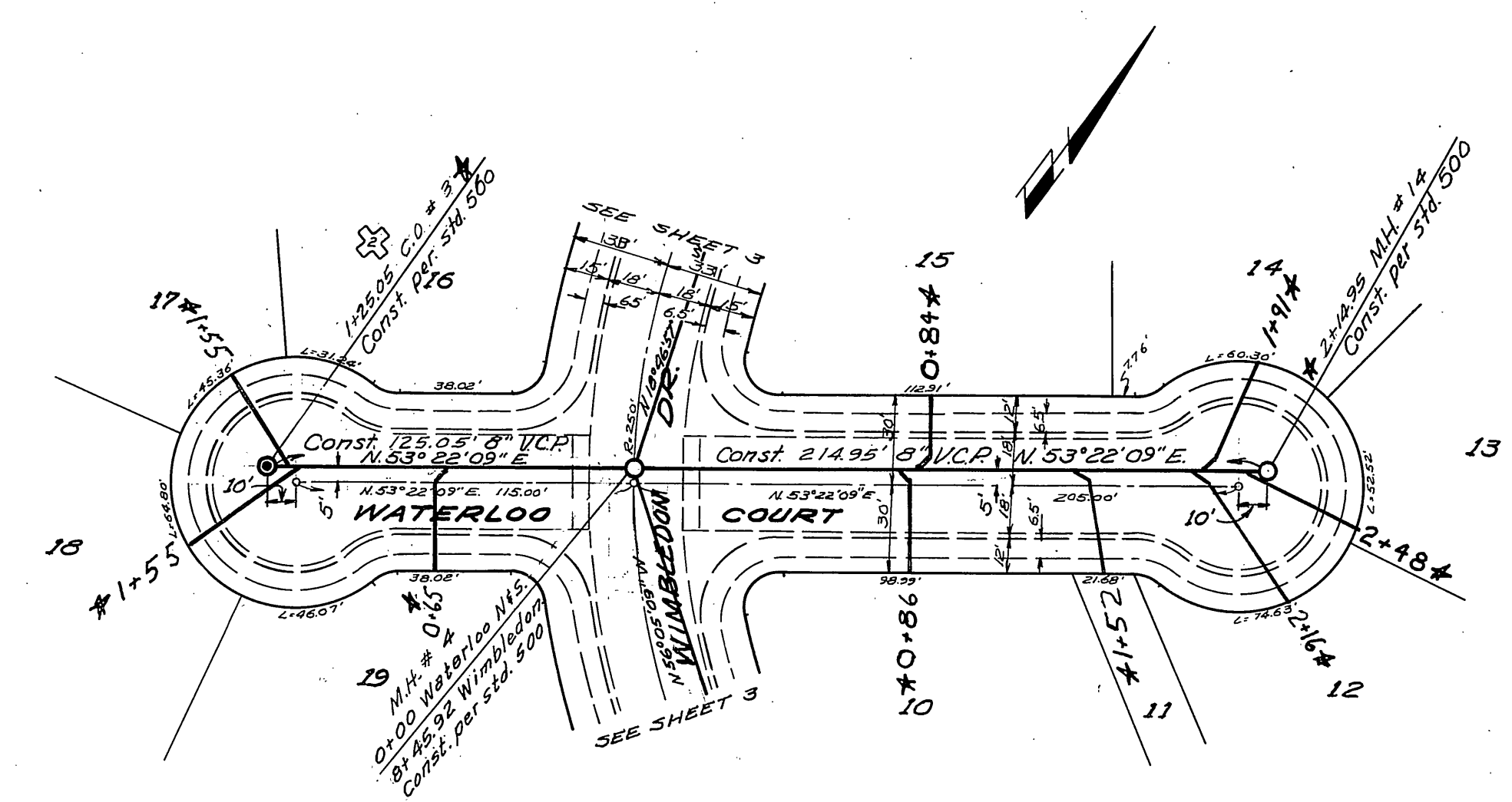
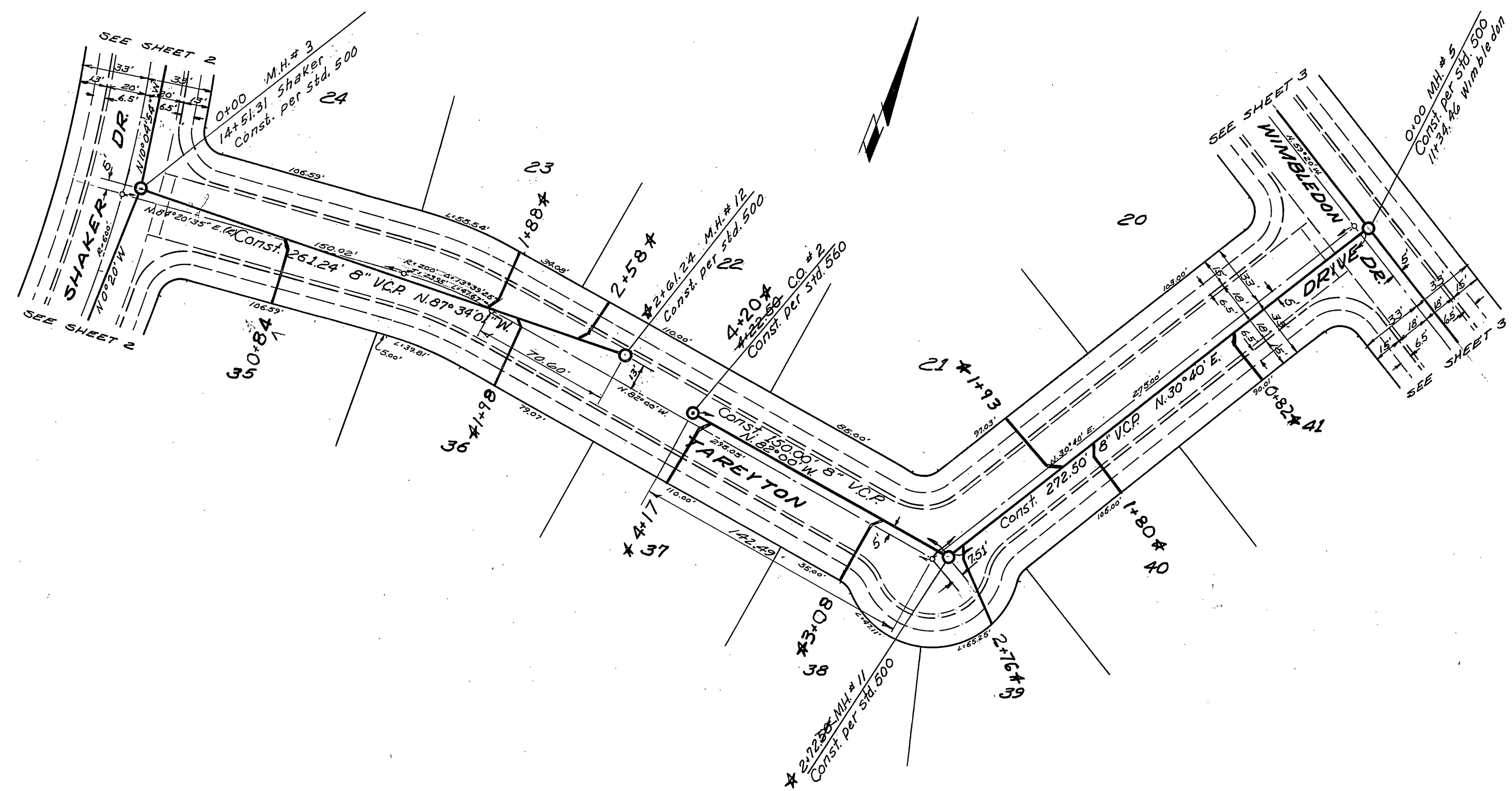


\* AS BUILT 7-25-69 B.M.

<b>ALBERT A. WEBB ASSOCIATES</b> CIVIL ENGINEERS RIVERSIDE, CALIFORNIA APPROVED BY: <i>[Signature]</i> DATE 11-5-64 R.E. No. 2376 W.O. 64-270 FOR: Hicks-Badrain Inc. F.B. 549	DESIGNED BY: REC. DRAWN BY: BEL. CHECKED BY:	EXHIBIT 524-5 REVIEWED BY: <i>[Signature]</i> DATE 11-17-64 REVISIONS: <i>[Table]</i>	<b>CITY OF RIVERSIDE, CALIFORNIA</b> DEPARTMENT OF PUBLIC WORKS APPROVED BY: <i>[Signature]</i> DATE 2-9-65 OFFICE ENGINEER: <i>[Signature]</i> DATE 2-6 PARK DEPARTMENT TRAFFIC DIVISION ASSISTANT CITY ENG.	<b>SEWER PLAN &amp; PROFILE</b> <b>CLARIDGE DRIVE</b> TRACT No. 3824 PROJECT NO. 64-270 SHEET 4 OF 5 FILE NO. 64-270 B
		HORIZ. SCALE: 1" = 50' VERT. SCALE: 1" = 10'		



**BENCH MARK:**  
 F.B. 549/14, Elev 1236.61 chisel D on North end of N.W. corner Ransom & Shaker.



\* AS BUILT 7-25-69 B.M.

ALBERT A. WEBB ASSOCIATES CIVIL ENGINEERS RIVERSIDE, CALIFORNIA APPROVED BY: <i>[Signature]</i> DATE: 11-5-68 R.E. No. 2826 W.O. 64-270 FOR Hicks-Bodman Inc. F.B. 549	Revised Tract No. ENW. <i>[Signature]</i> 11-5-68 Bob. Maus, C.E. 11-5-68 Revised M.H. to CO. 11-5-68 ENW. 11-5-68 Revised Grades 11-5-68 MARK REVISIONS APPR. DATE	CITY OF RIVERSIDE, CALIFORNIA DEPARTMENT OF PUBLIC WORKS APPROVED BY: <i>[Signature]</i> DATE: 2-9-69 OFFICE ENGINEER: <i>[Signature]</i> 2-9-69 PARK DEPARTMENT: <i>[Signature]</i> TRAFFIC DIVISION: <i>[Signature]</i> ASSISTANT CITY ENG. 2-9-69	SEWER PLAN & PROFILE TAREYTON DRIVE WATERLOO COURT TRACT No. 3824 ☆☆☆ SHEET 5 OF 5 HORIZ. SCALE: 1" = 50' VERT. SCALE: 1" = 10' PROJECT NO. 64-270 S-593 FILE NO. 64-270 B
	DESIGNED BY: <i>[Signature]</i> DRAWN BY: <i>[Signature]</i> CHECKED BY: <i>[Signature]</i>		DATE: 2-9-69