



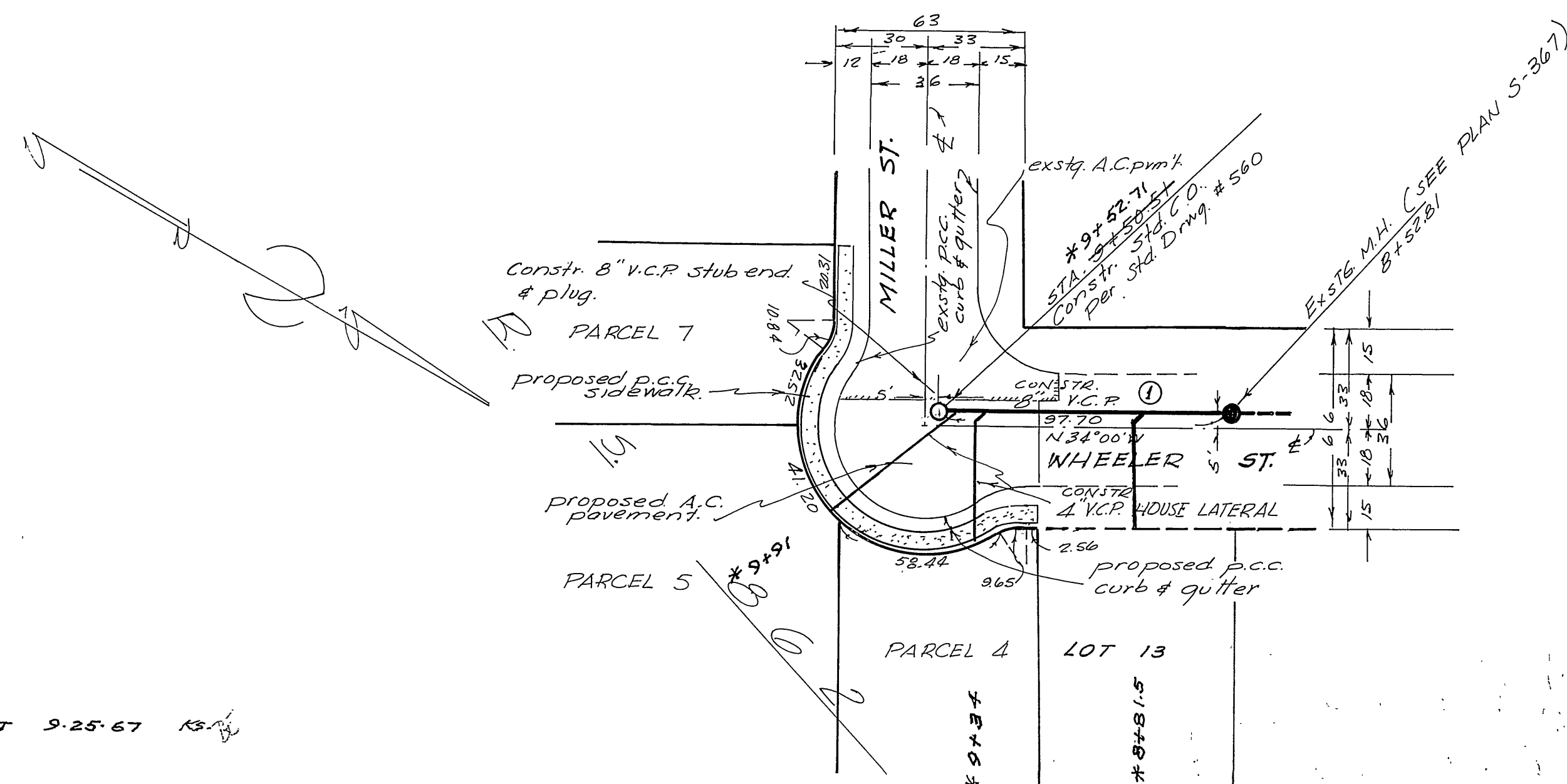
PROFILE

HORIZ. SCALE 1" = 40'
VERT. SCALE 1" = 4'

PLAN
SCALE 1" = 40'

GENERAL NOTES

1. It shall be the responsibility of the contractor to clear the Right of Way in accordance with the provisions of law as it affects each utility, including irrigation lines and appurtenances and at no cost to the City.
2. All construction shall be done in accordance with standards and specifications No. 461 of the City of Riverside, Department of Public Works.
3. All house connections shall be located in field at the time of construction of the sewer.
4. Joints in vitrified clay pipe sewer shall conform to A.S.T.M. Standard C-425-60T, or the latest revision thereto.
5. B.M. - nail in curb return @ N.W. corner of Jackson Street and Garfield Street U.S.G.S. Elev. 751.76 (plan R-391)



* AS BUILT 9-25-67 15/2

ROBERT L. TAYLOR
CIVIL ENGINEER
RIVERSIDE CALIFORNIA
Approved: *Robert L. Taylor*
Date: Jan 20, 1965 RCE104.70

① Added "Y" for lot 13 J.C. <i>Handwritten</i> 8-25-65		CITY OF RIVERSIDE, CALIFORNIA DEPARTMENT OF PUBLIC WORKS		SEWER PLAN AND PROFILE WHEELER STREET		PROJECT NO. 5-599	
APPROVED BY OFFICE ENGINEER PARK DEPARTMENT TRAFFIC DIVISION ASSISTANT CITY ENG.		BY <i>W.J. 3.E</i> DATE <i>3-8-65</i>		APPROVED BY DIRECTOR OF PUBLIC WORKS <i>Robert L. Taylor</i> DATE <i>Jan 20, 1965</i>		SHEET 1 OF 1	
DESIGNED BY DRAWN BY CHECKED BY <i>WJ</i>		HORIZ. SCALE: 1" = 40' VERT. SCALE: 1" = 4'		FILE NO.			