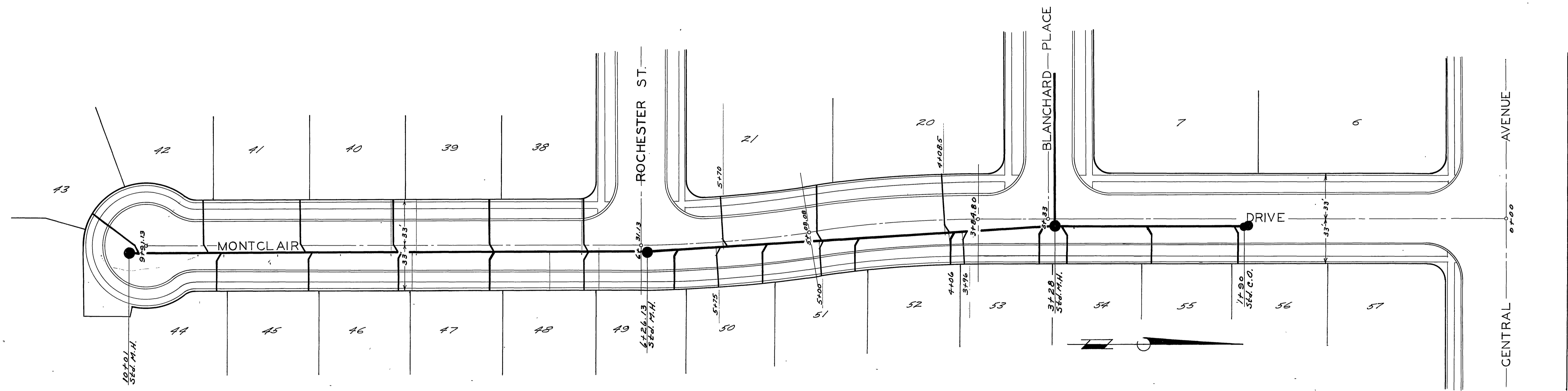
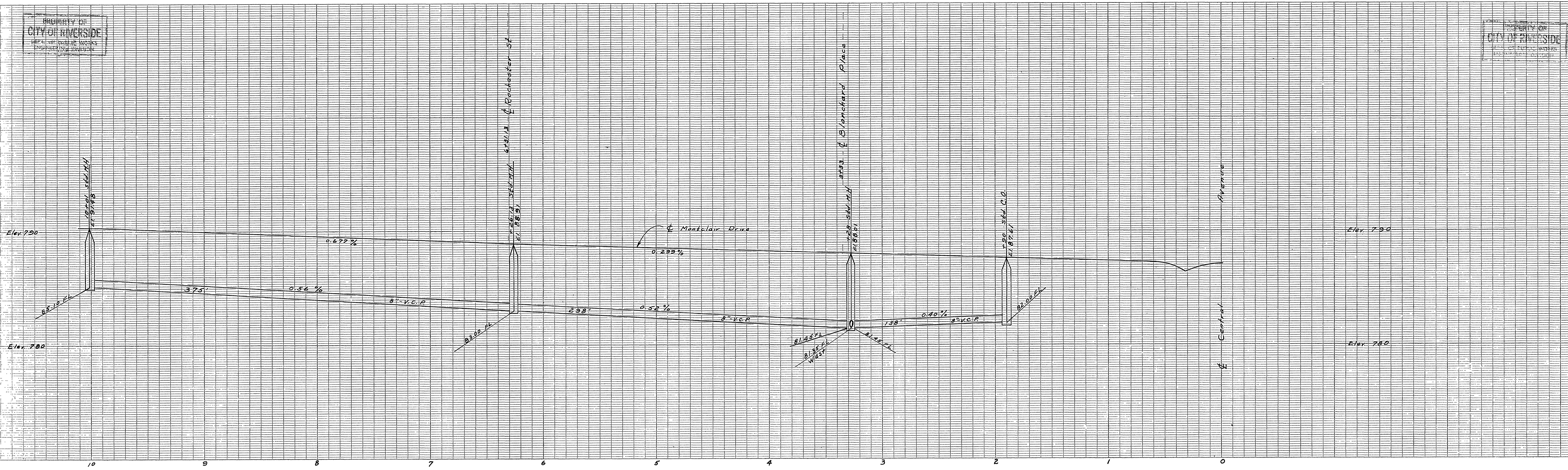


PROPERTY OF
 CITY OF RIVERSIDE
 DEPT. OF PUBLIC WORKS
 ENGINEERING DIVISION

PROPERTY OF
 CITY OF RIVERSIDE
 DEPT. OF PUBLIC WORKS
 ENGINEERING DIVISION



J.F. DAVIDSON-CIVIL ENGINEER
 R.E. No. 862
 RIVERSIDE, CALIFORNIA
 APPROVED BY *J.F. Davidson* DATE 1-1-36

CITY OF RIVERSIDE, CALIFORNIA
 DEPARTMENT OF PUBLIC WORKS

SEWER PLAN & PROFILE
 MONTCLAIR DR.

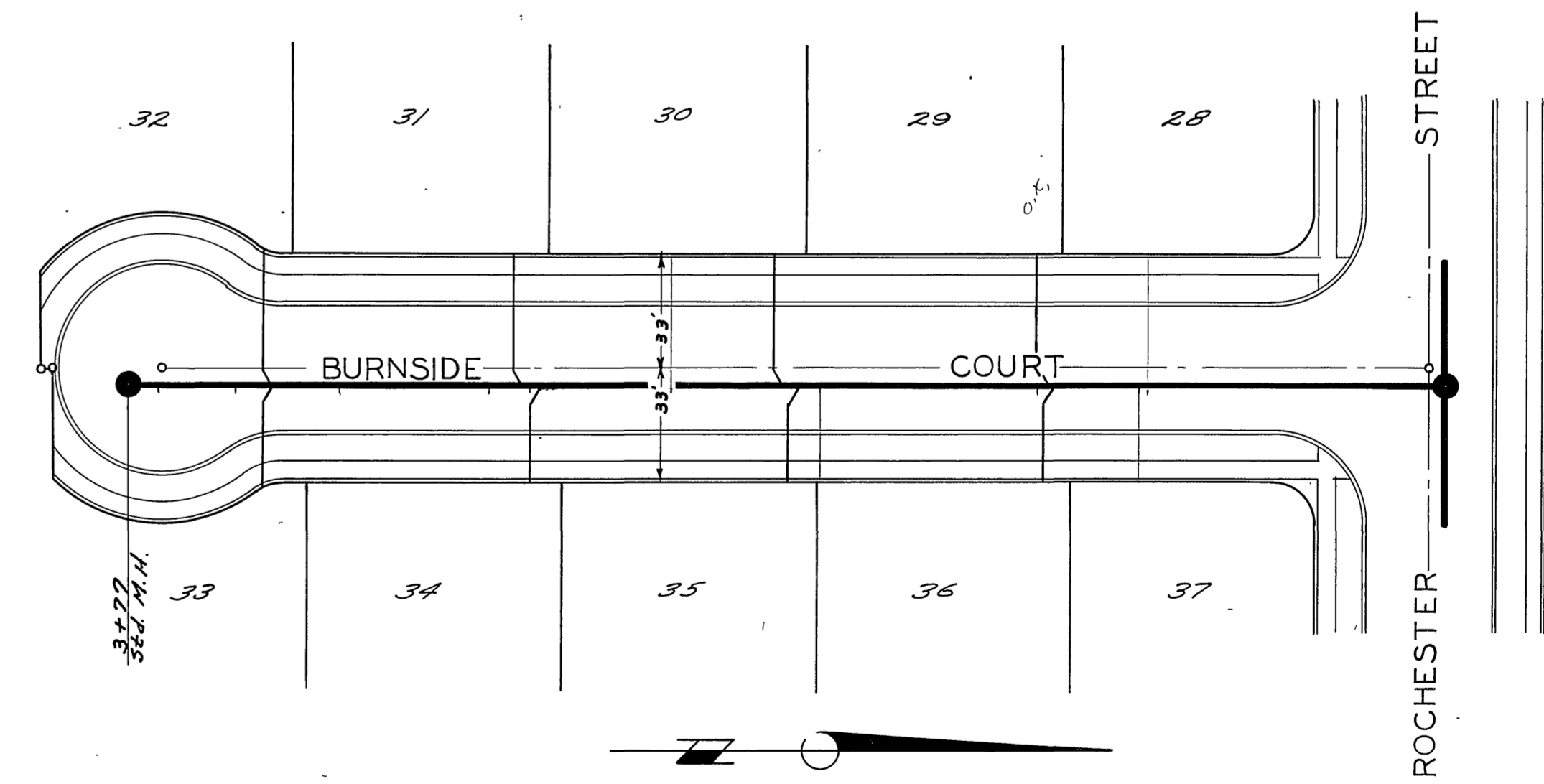
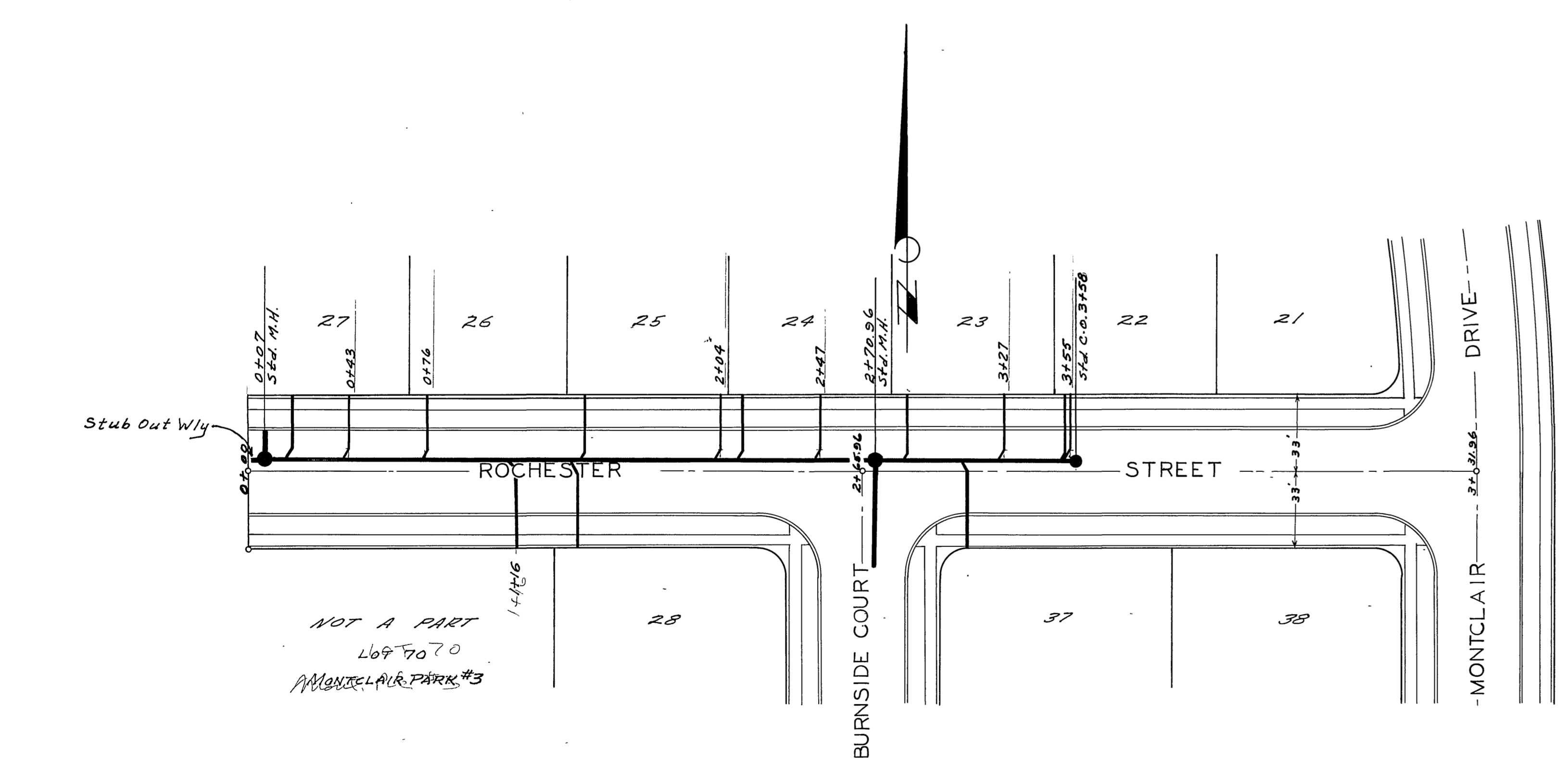
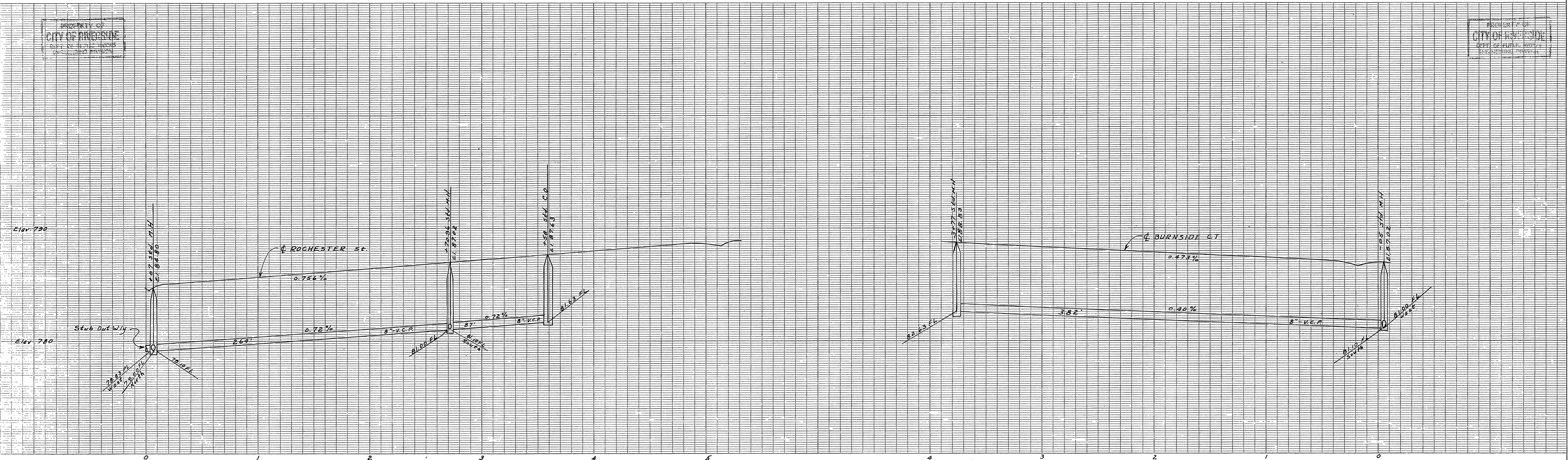
MONTCLAIR PARK
 HORIZ. SCALE 1"=40' VERT. SCALE 1"=8'

APPROVED BY *J.F. Davidson*
 Director of Public Works
 DATE Jan. 6, 1936

NO. S-6
 SHEET 2 OF 5

PROPERTY OF
 CITY OF RIVERSIDE
 DEPT. OF PUBLIC WORKS
 ENGINEERING DIVISION

PROPERTY OF
 CITY OF RIVERSIDE
 DEPT. OF PUBLIC WORKS
 ENGINEERING DIVISION



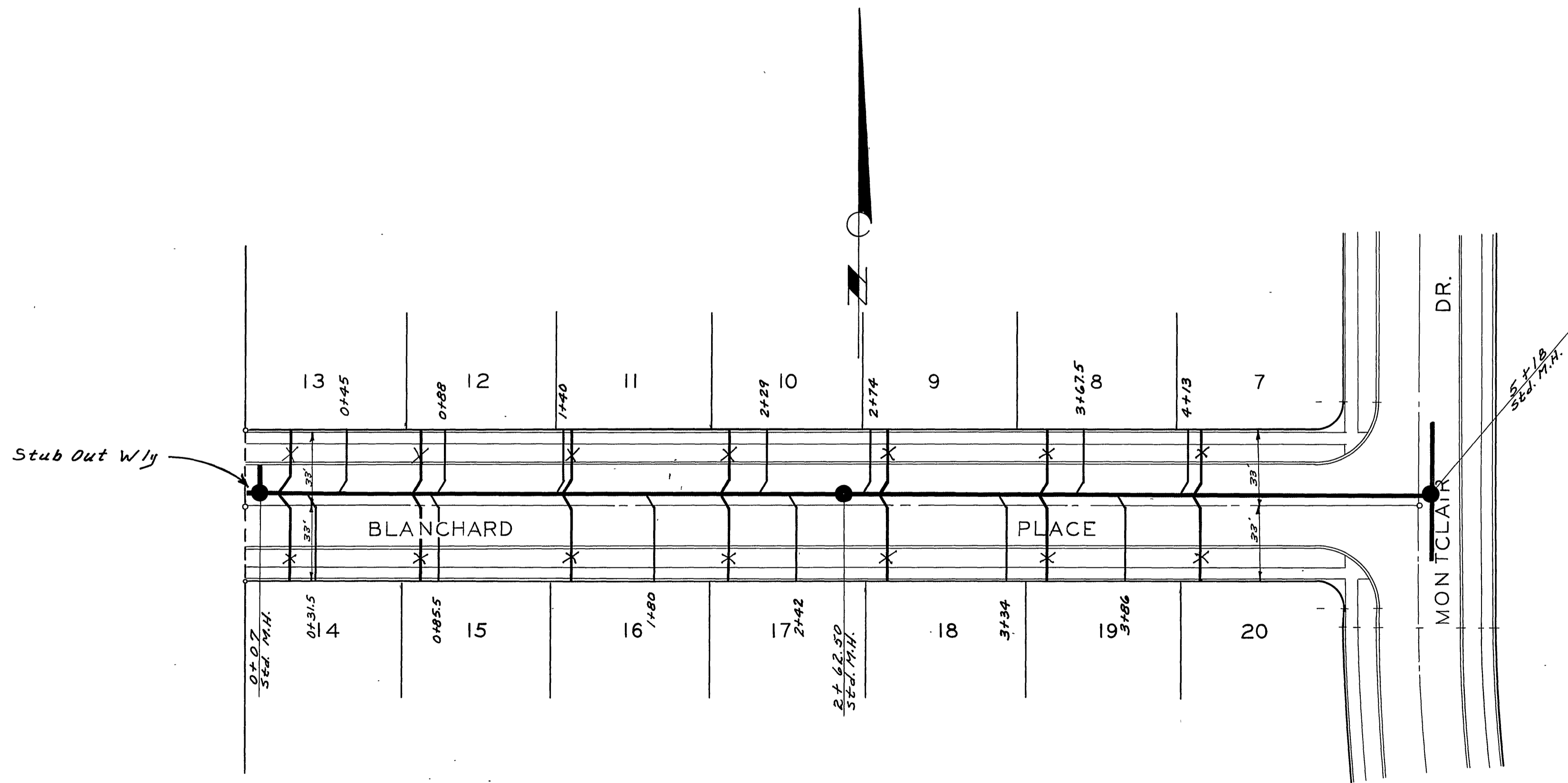
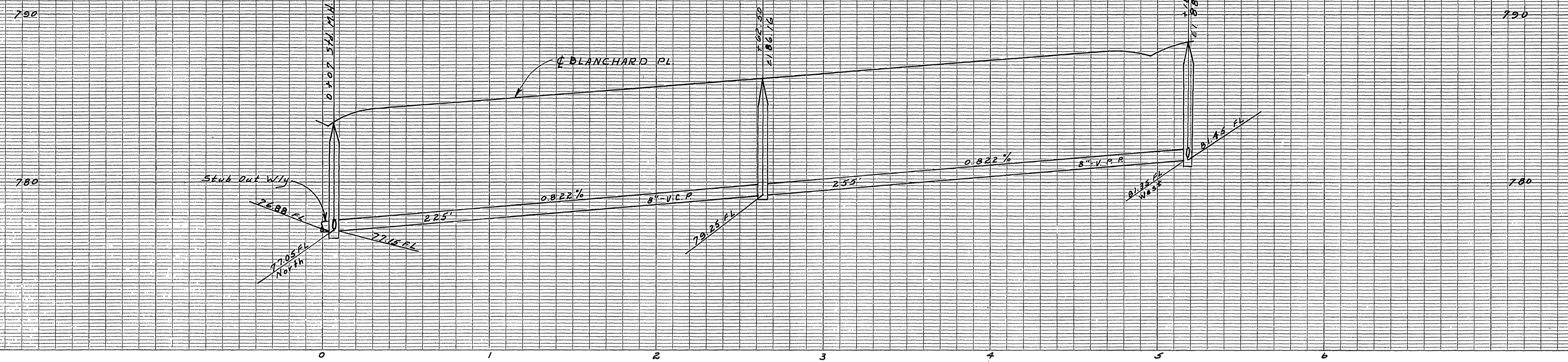
PROPERTY OF CITY OF RIVERSIDE

PROPERTY OF CITY OF RIVERSIDE

J.F. DAVIDSON - CIVIL ENGINEER
 R.E. No. 862
 RIVERSIDE, CALIFORNIA
 APPROVED BY *J.F. Davidson* DATE 1-5-56
 CITY OF RIVERSIDE, CALIFORNIA
 DEPARTMENT OF PUBLIC WORKS
 SEWER PLAN & PROFILE
 ROCHESTER ST. & BURNSIDE CT
 MONTCLAIR PARK
 HORIZ. SCALE 1"=40' VERT. SCALE 1"=4'
 APPROVED BY *J.F. Davidson*
 Director of Public Works
 DATE Jan. 6, 1956
 NO. 5-6
 SHEET 3 OF 5

PROPERTY OF
CITY OF RIVERSIDE
DEPT. OF PUBLIC WORKS
ENGINEERING DIVISION

PROPERTY OF
CITY OF RIVERSIDE
DEPT. OF PUBLIC WORKS
ENGINEERING DIVISION



J.F. DAVIDSON - CIVIL ENGINEER
R.E. No 862
RIVERSIDE, CALIFORNIA
APPROVED BY *J.F. Davidson* DATE 1-5-56

CITY OF RIVERSIDE, CALIFORNIA
DEPARTMENT OF PUBLIC WORKS

SEWER PLAN & PROFILE
BLANCHARD PL.
MONCLAIR PARK

HORIZ. SCALE 1"=40' VERT. SCALE 1"=4'

APPROVED BY *J.F. Davidson*
Director of Public Works
DATE Jan 6, 1956

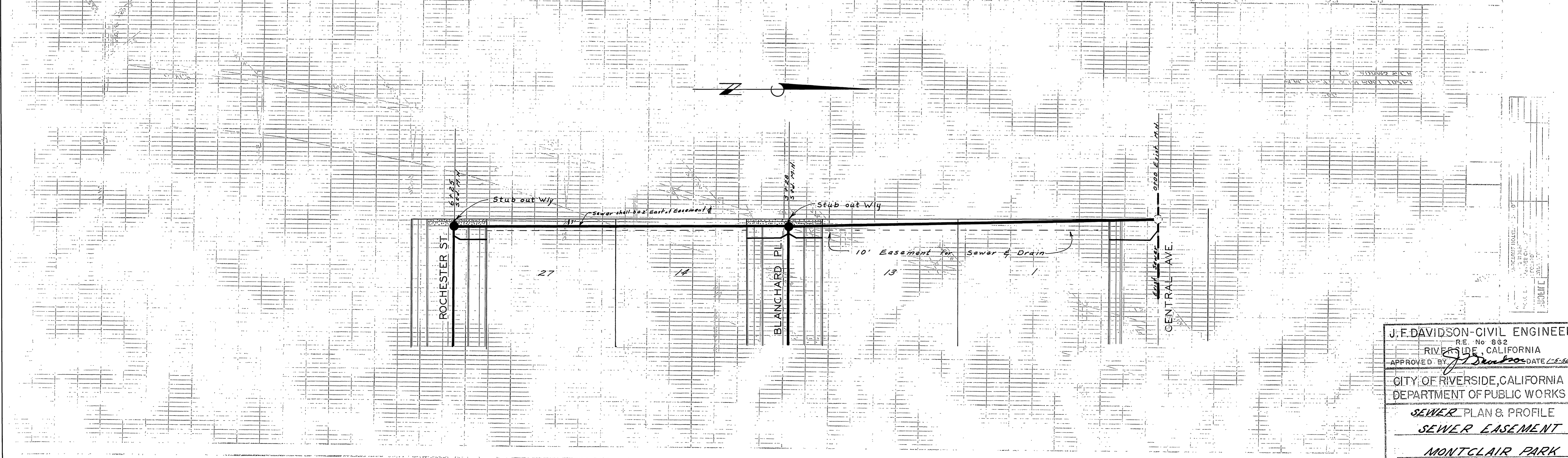
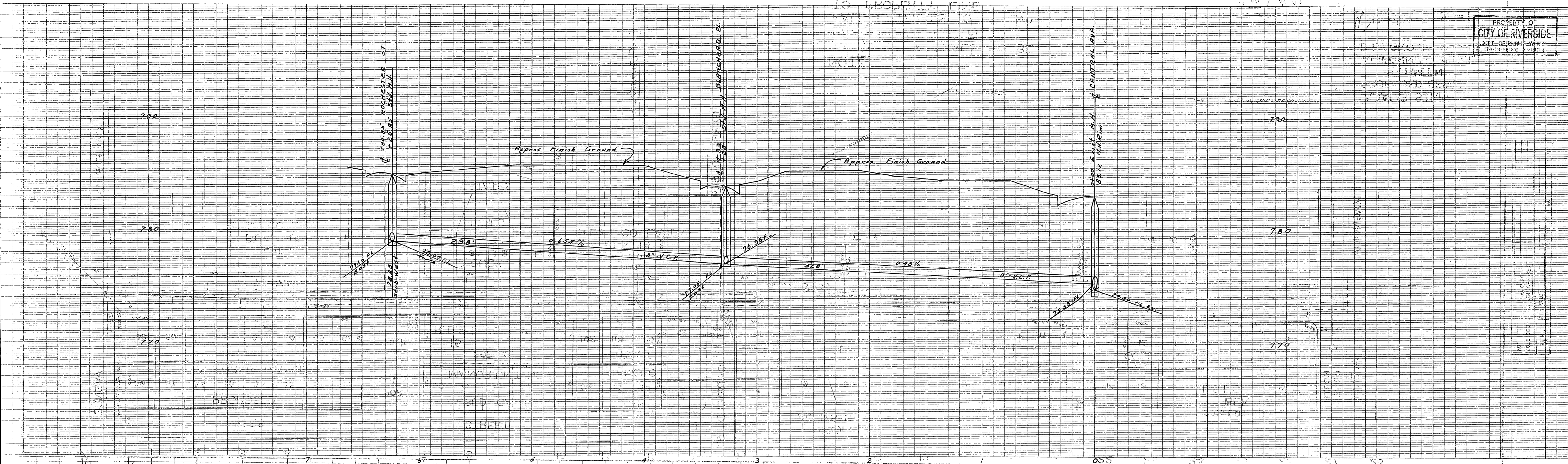
NO. 5-6
SHEET 2 OF 5

PROPERTY OF
CITY OF RIVERSIDE
DEPT. OF PUBLIC WORKS
ENGINEERING DIVISION

PROPERTY OF
CITY OF RIVERSIDE
DEPT. OF PUBLIC WORKS
ENGINEERING DIVISION

PROPERTY OF
CITY OF RIVERSIDE
DEPT. OF PUBLIC WORKS
ENGINEERING DIVISION

PROPERTY OF
CITY OF RIVERSIDE
DEPT. OF PUBLIC WORKS
ENGINEERING DIVISION



PROPERTY OF
CITY OF RIVERSIDE
DEPT. OF PUBLIC WORKS
ENGINEERING DIVISION

PROPERTY OF
CITY OF RIVERSIDE
DEPT. OF PUBLIC WORKS
ENGINEERING DIVISION

J.F. DAVIDSON - CIVIL ENGINEER
R.E. No. 862
RIVERSIDE, CALIFORNIA
APPROVED BY: *J. Davidson* DATE 1-5-56
CITY OF RIVERSIDE, CALIFORNIA
DEPARTMENT OF PUBLIC WORKS
SEWER PLAN & PROFILE
SEWER EASEMENT
MONTCLAIR PARK
HORIZ. SCALE 1"=40' VERT. SCALE 1"=4'
APPROVED BY: *J. Davidson*
Director of Public Works
DATE Jan 6, 1956
NO. 5-6
SHEET 5 OF 5