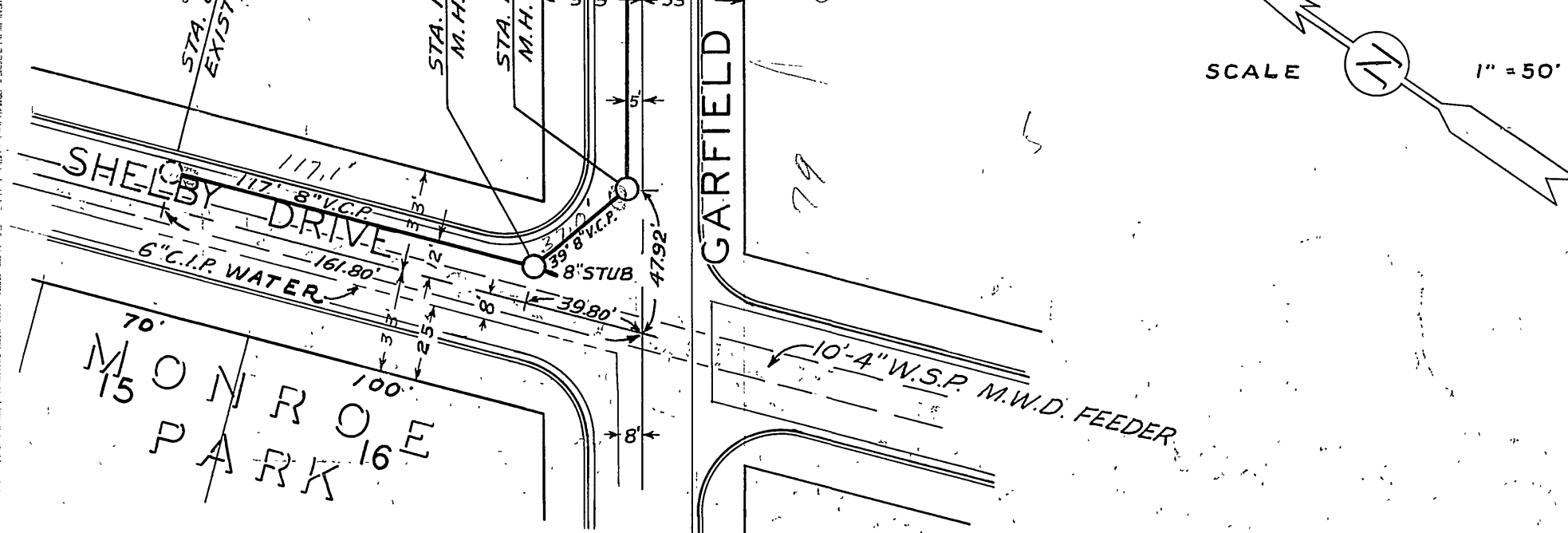
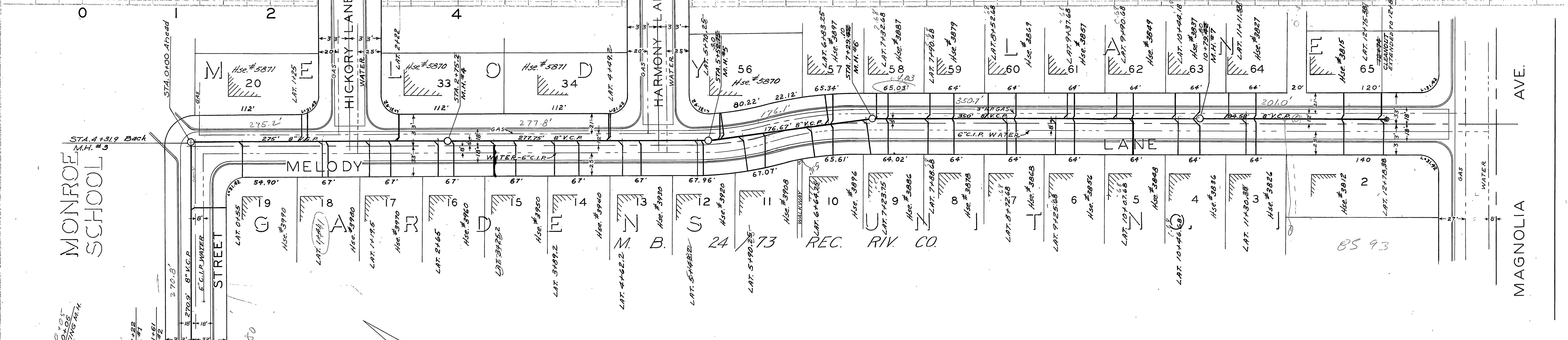


NOTE - HOUSE CONNECTIONS & 8"x4" WYES TO BE LOCATED IN THE FIELD.

B.M. ELEV 766.04 "PK" IN CTR. SW. COR. RET. COR. MELODY LN. & GARFIELD AVE.
 B.M.-X ON BOLT OF F.H. CTR. MAGNOLIA AVE. 15' W OF POLE 84051F.
 SEE B.M. BOOK.

F.B. 599 / 23 & 33

SCALES: HOR. 1" = 50'
 VERT. 1" = 5'



VISIONS		CITY OF RIVERSIDE, CALIFORNIA DEPARTMENT OF PUBLIC WORKS	
DESCRIPTION			
12-31-56	FL. GRADE CHANGE, STATION 0+00 TO 4+31.9	MELODY LANE SANITARY SEWER DISTRICT MAGNOLIA AVENUE TO SHELBY DRIVE	
2-18-57	FL. GRADE CHANGE, STA. 0+00 TO 431.9-54		
3-27-57	RED. INK INDICATES AS WAS CONSTRUCTED.		
APPROVED BY: <i>[Signature]</i>		APPROVED BY: <i>[Signature]</i>	
DATE: Dec 6, 1956		DATE: Dec 6, 1956	

PROJECT: MELODY LANE SANITARY SEWER DISTRICT
 SHEET: S-60
 DATE: DEC 6, 1956
 DRAWN BY: J. H. B.
 CHECKED BY: N. W.
 APPROVED BY: *[Signature]*
 DIRECTOR OF PUBLIC WORKS