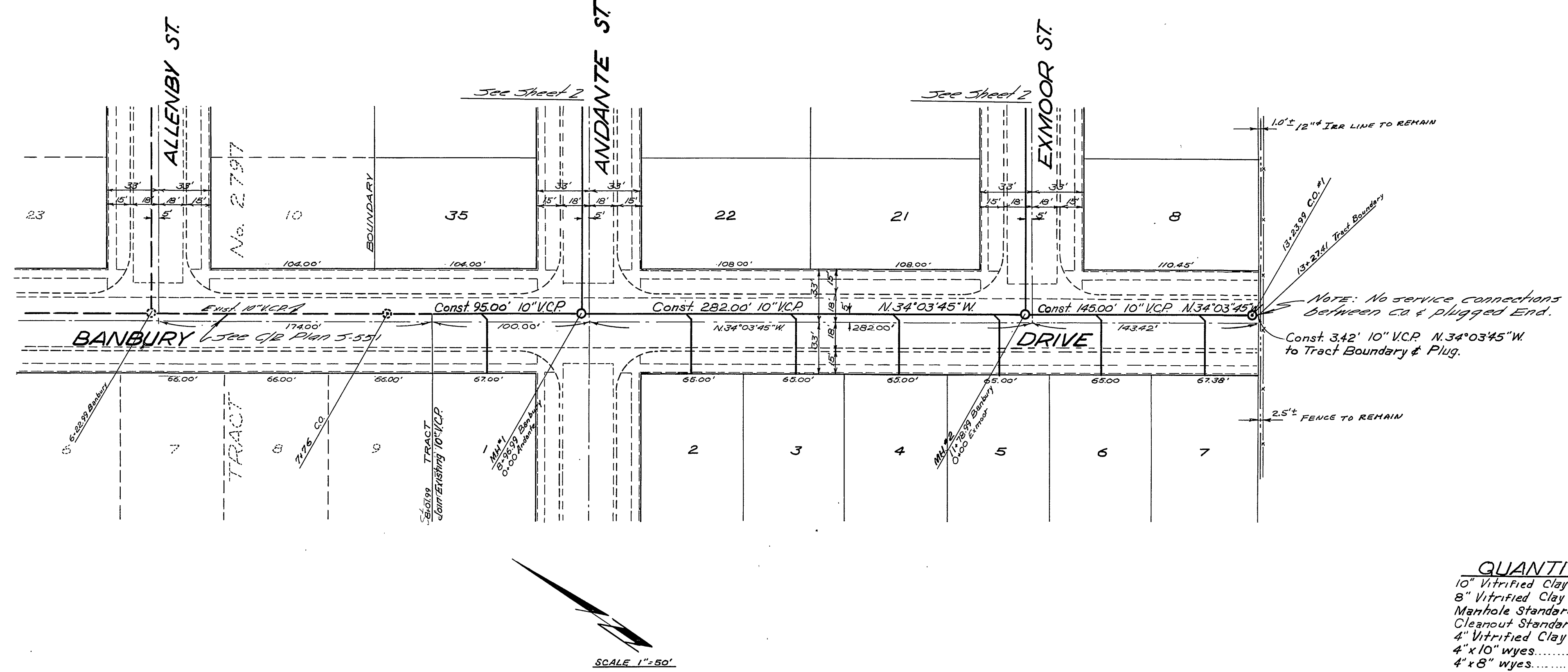


SCALE: Horiz. 1"=50'  
 Vert. 1"=5'



BENCH MARK: Elev. 743.70, F.B. 561/2 - 3/8" ball set in power pole #12796J at the south east corner of Tyler & Magnolia.

**GENERAL NOTES**

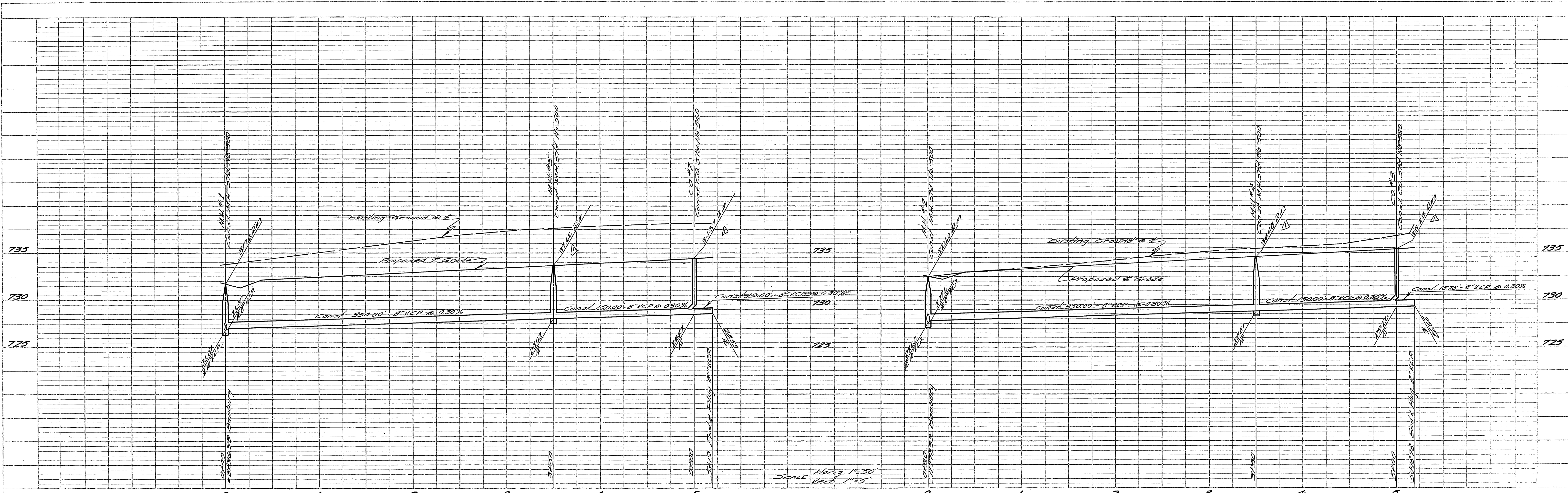
- Construction shall be in accordance with the City of Riverside, Department of Public Works, Standard Specifications No. 461 and Standard Drawings.
- It shall be the responsibility of the Contractor to clear the right of way in accordance with the provisions of the law as it affects each utility including irrigation lines and appurtenances and at no cost to the City.
- Joints in vitrified clay pipe sewers shall conform to ASTM standard C-425-60-T, or the latest revision thereof.
- Pipe shall be bedded per case II, Standard Drawing No. 452, unless otherwise specified on plan.
- Location of wyes and laterals to be determined in the field.
- NOTE TO CONTRACTOR: The existence and location of any underground utility pipes or structures shown on these plans are obtained by a search of the available records. To the best of our knowledge there are no existing utilities, except as shown on these plans. The Contractor is required to take due precautionary measures to protect the utility lines shown and any other lines not of record or not shown on these plans.
- All stubs and laterals to be constructed in accordance with Std. Dwg. No. 562. Stubs shall be plugged and capped.

ALBERT A. WEBB ASSOCIATES  
 CIVIL ENGINEERS  
 RIVERSIDE CALIFORNIA

| REVISIONS |      |             | CITY OF RIVERSIDE CALIFORNIA<br>DEPARTMENT OF PUBLIC WORKS |
|-----------|------|-------------|--|
| MARK      | DATE | DESCRIPTION |  |
|           |      |             | SEWER PLAN & PROFILE<br>BANBURY DRIVE<br>TRACT NO. 2796    |
|           |      |             |  |

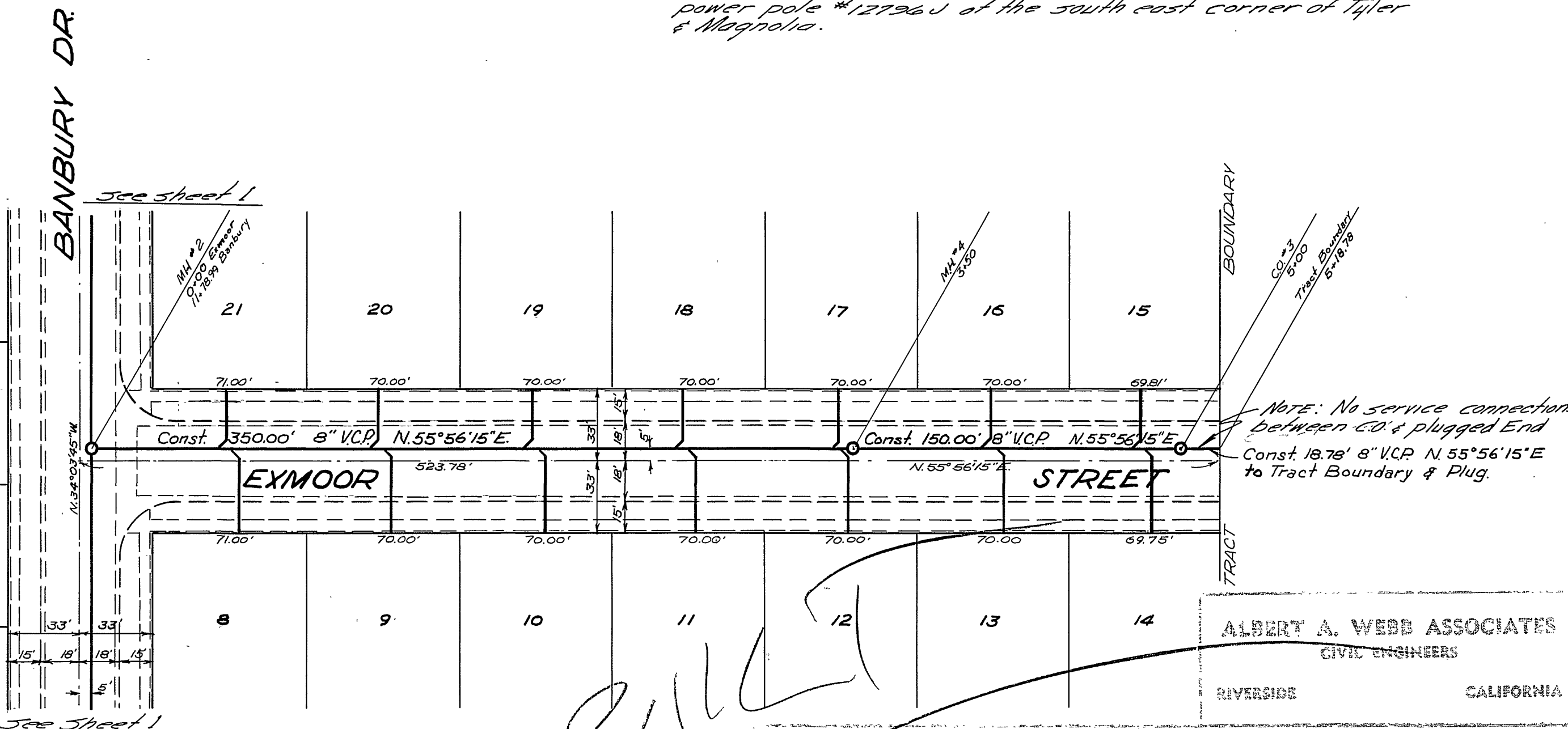
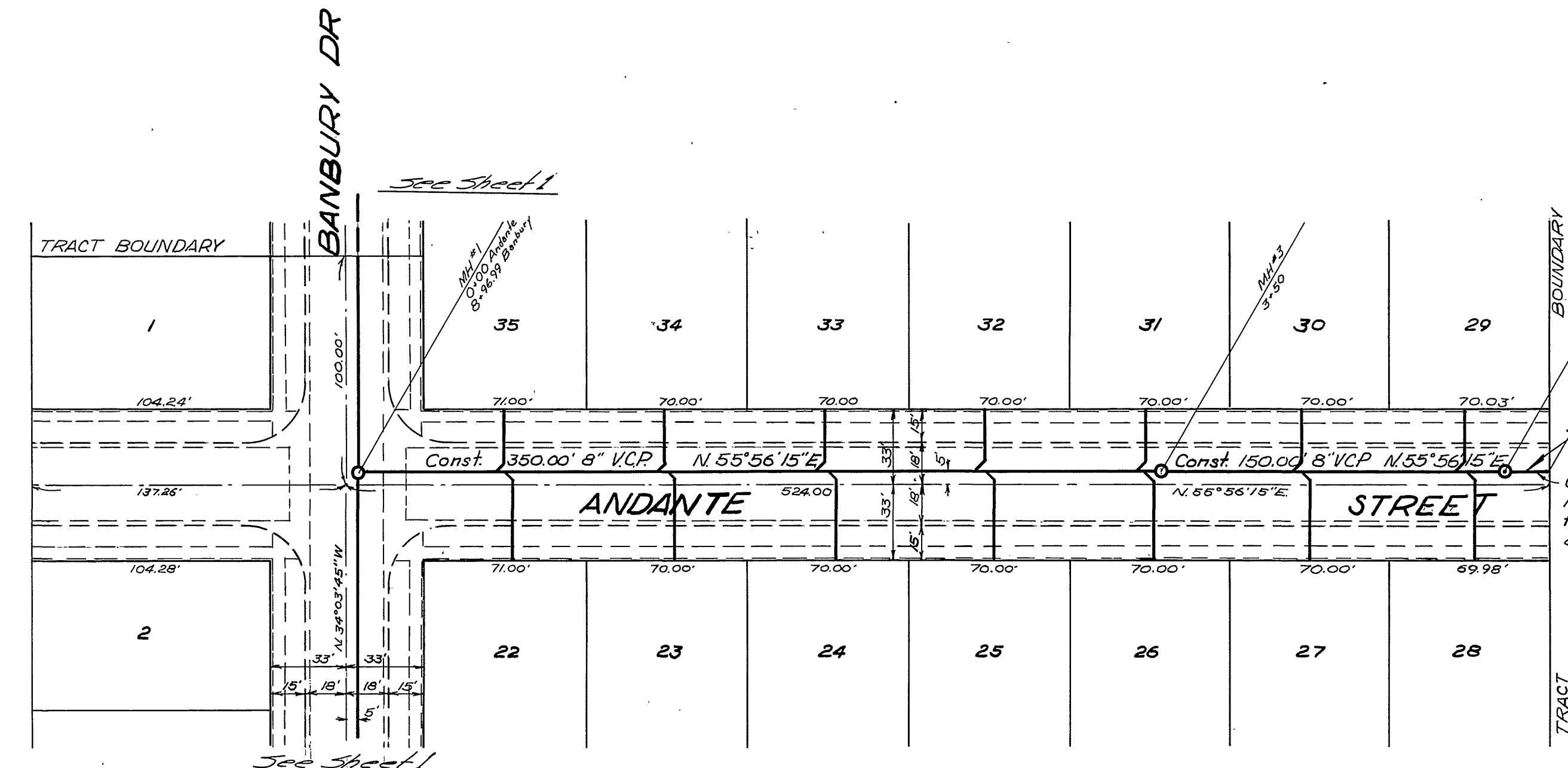
DESIGNED BY: EM  
 DRAWN BY: RLB, EM  
 CHECKED BY: BWS, #1048, AM?  
 APPROVED BY: [Signature]  
 DIRECTOR OF PUBLIC WORKS  
 DATE: Dec 2, 1964  
 SHEET 1 OF 2

NOT BUILT



Notes: 1"=50'  
Scale: Vert. 1"=5'

BENCH MARK: Elev. 743.70, F.B. 5611/2 - 36" bolt set in power pole #12726 U at the south east corner of Tyler & Magnolia.



ALBERT A. WEBB ASSOCIATES  
CIVIL ENGINEERS  
RIVERSIDE CALIFORNIA

| REVISIONS |         | CITY OF RIVERSIDE CALIFORNIA<br>DEPARTMENT OF PUBLIC WORKS |
|-----------|---------|--|
| MARK      | DATE    |  |
| Δ         | 4-15-66 | Revised sewer line from 18\"/>                             |

|                     |                                  |                                   |
|---------------------|----------------------------------|-----------------------------------|
| DESIGNED BY<br>EM   | CHECKED BY<br>Bols. wdg ARJ gm   | APPROVED BY<br><i>[Signature]</i> |
| DRAWN BY<br>RLB EM  | RECOMMENDED BY<br>Albert A. Webb | DIRECTOR OF PUBLIC WORKS          |
| DATE<br>Dec 3, 1964 | DATE<br>3-8-65                   | DATE<br>2 2                       |

*NOT RELEVANT*

S-601

DWG. No. 63-789-B

|      |    |
|------|----|
| DATE | BY |
|      |    |
|      |    |
|      |    |

|      |    |
|------|----|
| DATE | BY |
|      |    |
|      |    |
|      |    |