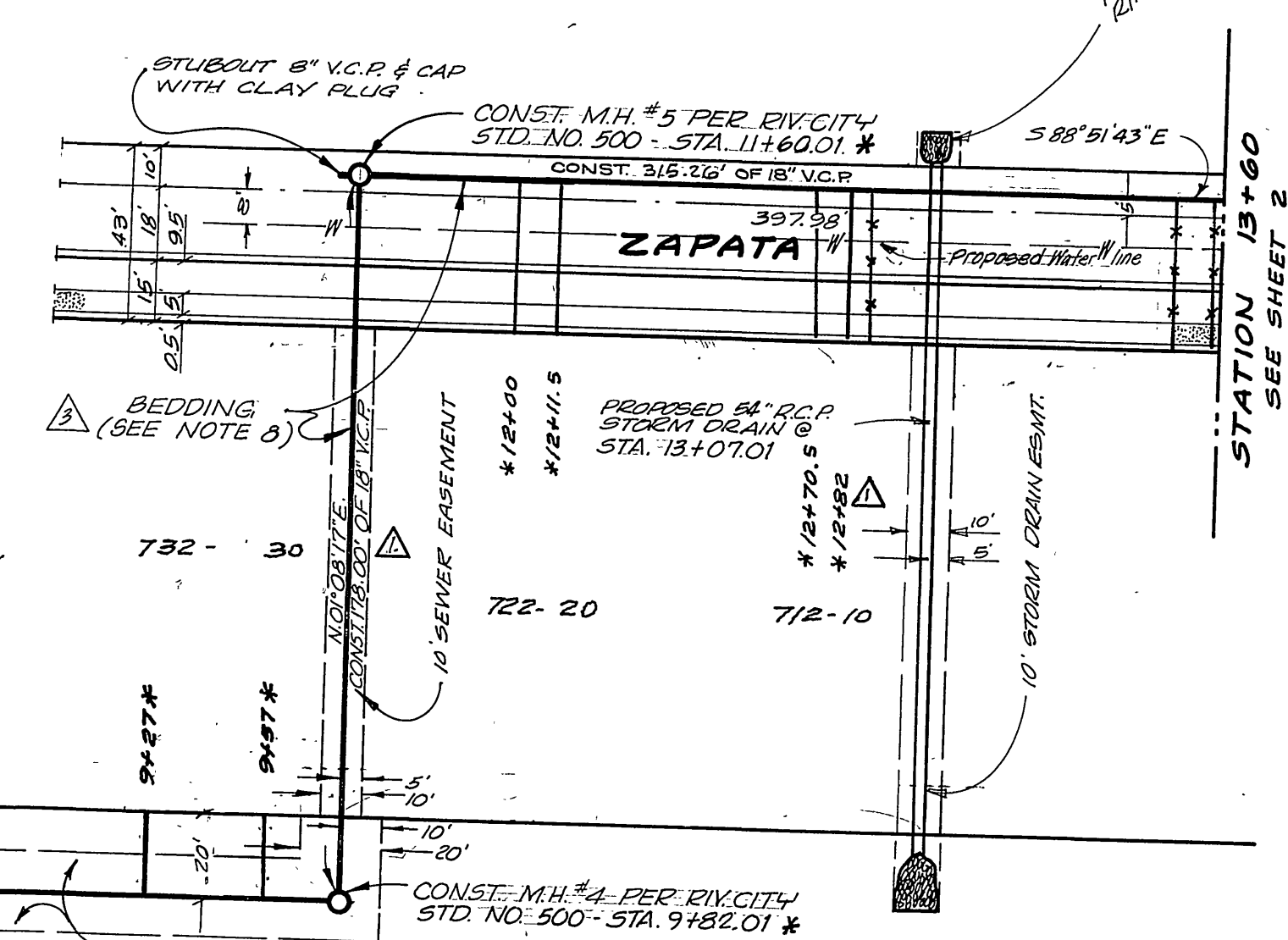
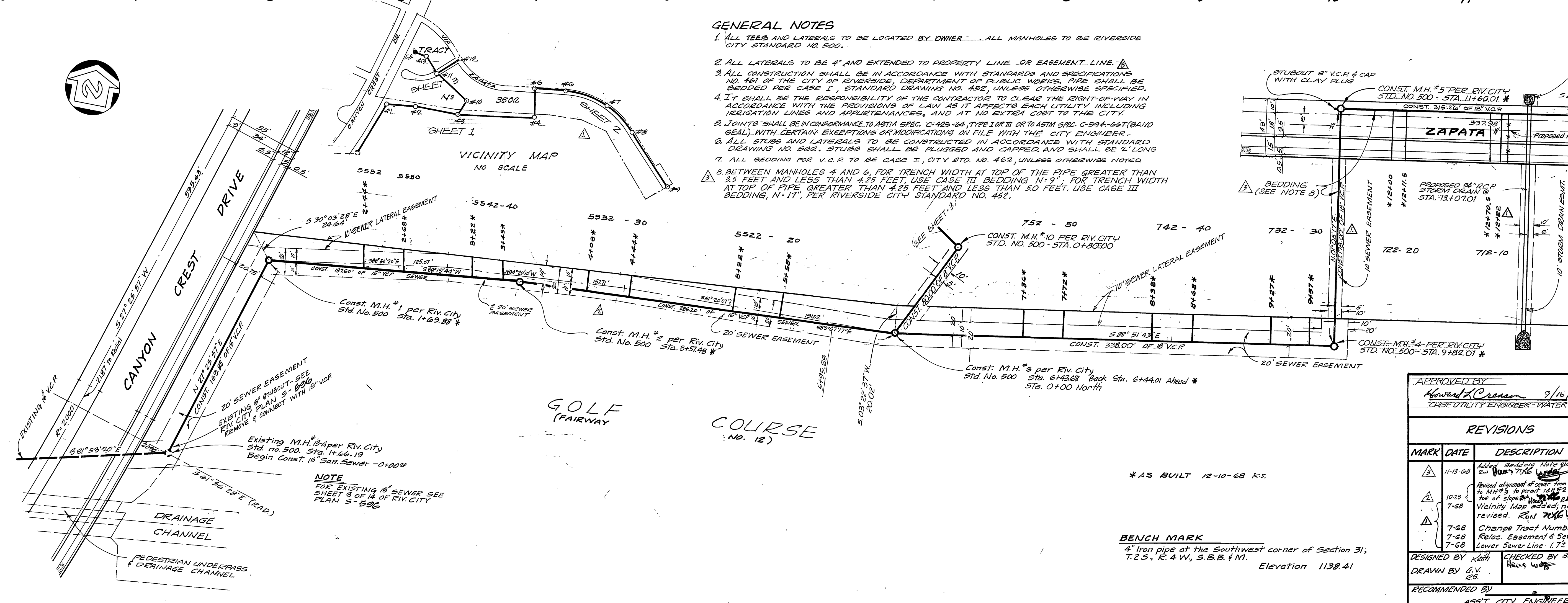


GENERAL NOTES

1. ALL TEES AND LATERALS TO BE LOCATED BY OWNER. ALL MANHOLES TO BE RIVERSIDE CITY STANDARD NO. 500.
2. ALL LATERALS TO BE 4" AND EXTENDED TO PROPERTY LINE OR EASEMENT LINE.
3. ALL CONSTRUCTION SHALL BE IN ACCORDANCE WITH STANDARDS AND SPECIFICATIONS NO. 461 OF THE CITY OF RIVERSIDE, DEPARTMENT OF PUBLIC WORKS. PIPE SHALL BE BEDDED PER CASE I, STANDARD DRAWING NO. 452, UNLESS OTHERWISE SPECIFIED.
4. IT SHALL BE THE RESPONSIBILITY OF THE CONTRACTOR TO CLEAR THE RIGHT-OF-WAY IN ACCORDANCE WITH THE PROVISIONS OF LAW AS IT AFFECTS EACH UTILITY INCLUDING IRRIGATION LINES AND APPURTENANCES, AND AT NO EXTRA COST TO THE CITY.
5. JOINTS SHALL BE IN CONFORMANCE TO ASTM SPEC. C-425-64, TYPE I OR II OR TO ASTM SPEC. C-994-66T (BAND SEAL) WITH CERTAIN EXCEPTIONS OR MODIFICATIONS ON FILE WITH THE CITY ENGINEER.
6. ALL STUBS AND LATERALS TO BE CONSTRUCTED IN ACCORDANCE WITH STANDARD DRAWING NO. 562. STUBS SHALL BE PLUGGED AND CAPPED, AND SHALL BE 2' LONG.
7. ALL BEDDING FOR V.C.P. TO BE CASE I, CITY STD. NO. 452, UNLESS OTHERWISE NOTED.
8. BETWEEN MANHOLES 4 AND 6, FOR TRENCH WIDTH AT TOP OF THE PIPE GREATER THAN 3.5 FEET AND LESS THAN 4.25 FEET, USE CASE III BEDDING N=9"; FOR TRENCH WIDTH AT TOP OF PIPE GREATER THAN 4.25 FEET AND LESS THAN 5.0 FEET, USE CASE III BEDDING, N=11", PER RIVERSIDE CITY STANDARD NO. 452.



APPROVED BY: *Howard L. Cream* 9/16/68
 CHIEF UTILITY ENGINEER - WATER

J.F. DAVIDSON ASSOCIATES
 RIVERSIDE, CALIFORNIA
 APPROVED BY: *George M. Canty* DATE 11-13-64
 CITY OF RIVERSIDE, CALIFORNIA
 DEPARTMENT OF PUBLIC WORKS

REVISIONS

MARK	DATE	DESCRIPTION
3	11-13-68	Added bedding note 9002 to 706
4	10-29	Revised alignment of sewer from M.H. #1 to M.H. #5 to permit M.H. #2 to be on line of sewer. See vicinity map, note 2 revised. Rev. 706
5	7-68	Change Tract Number from 3802 to 3802A
6	7-68	Reloc. Easement & Sewer for Lower Sewer Line - 1.72

DESIGNED BY: *Kath*
 DRAWN BY: *G.V.*
 RECOMMENDED BY: *ASST. CITY ENGINEER*

CHECKED BY: *825.5*
 HAZEL WOOD

APPROVED BY: *George M. Canty*
 CHIEF UTILITY ENGINEER

DATE 2-29-66 SHEET 1 OF 3

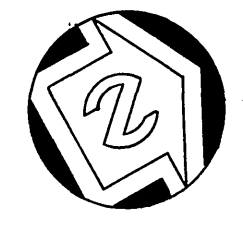
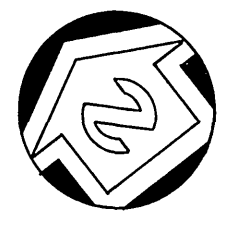
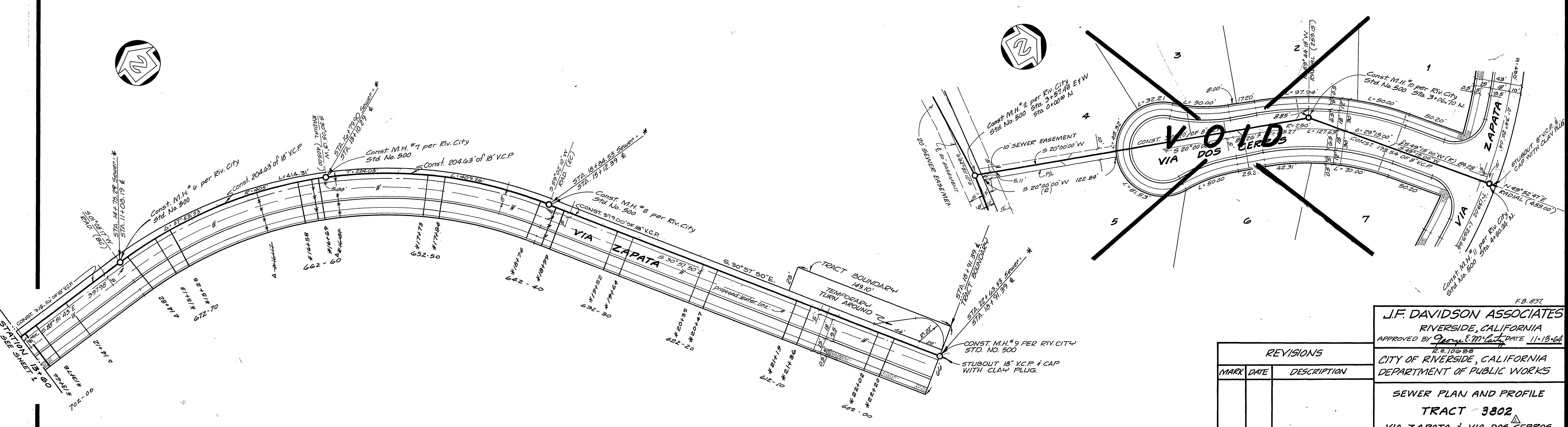
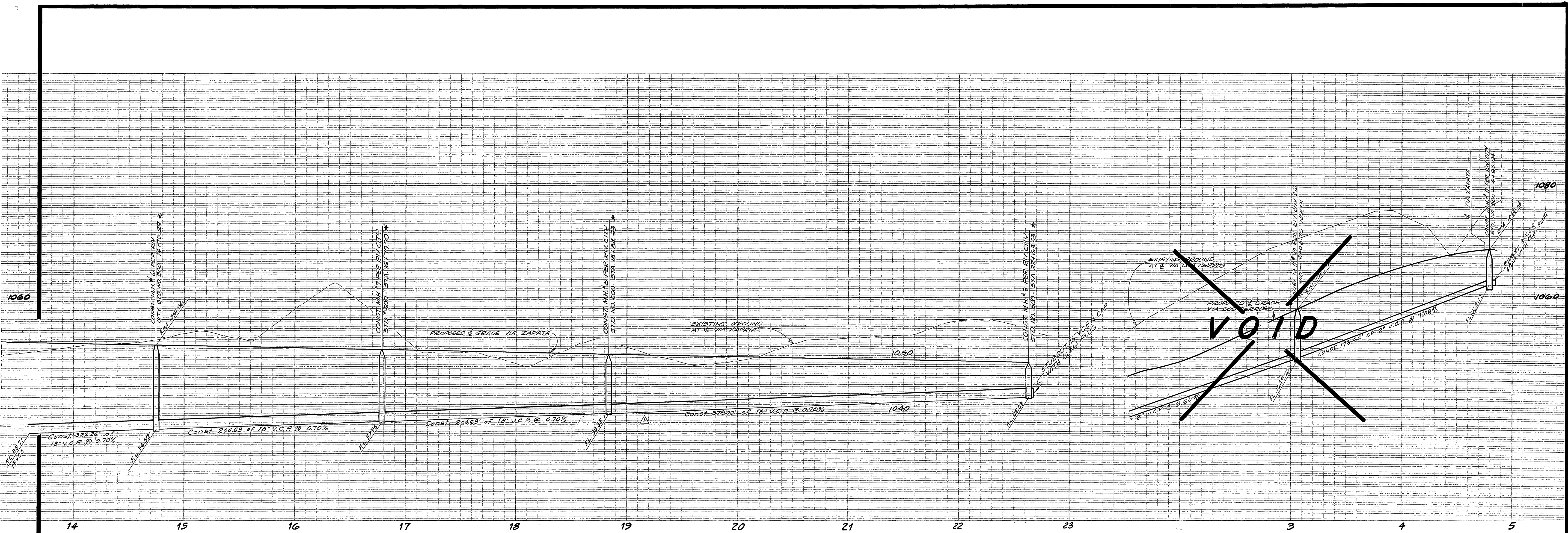
SCALE: HOR. 1"=40' VERT. 1"=8'

NO. 6-602

*AS BUILT 12-10-68 K.S.

BENCH MARK
 4" Iron pipe at the Southwest corner of Section 31, T.2.S. R. 4 W. 5. S.B.B. 1 M. Elevation 1138.41

F.B. 837



Δ AS BUILT 4/9/70 KARL
 *AS BUILT 12-10-68 K.S.

BENCH MARK
 4" Iron pipe at the Southwest corner of Section 31,
 T.2 S., R.4 W., S.B.B. & N. Elevation 1138.41

MARK	DATE	DESCRIPTION
7-68		Change Tract Number 220
7-68		Lower Sewer Line 1.55'

F.B. 837

J.F. DAVIDSON ASSOCIATES
 RIVERSIDE, CALIFORNIA
 APPROVED BY *George E. M. [Signature]* DATE 11-13-64

CITY OF RIVERSIDE, CALIFORNIA
 DEPARTMENT OF PUBLIC WORKS

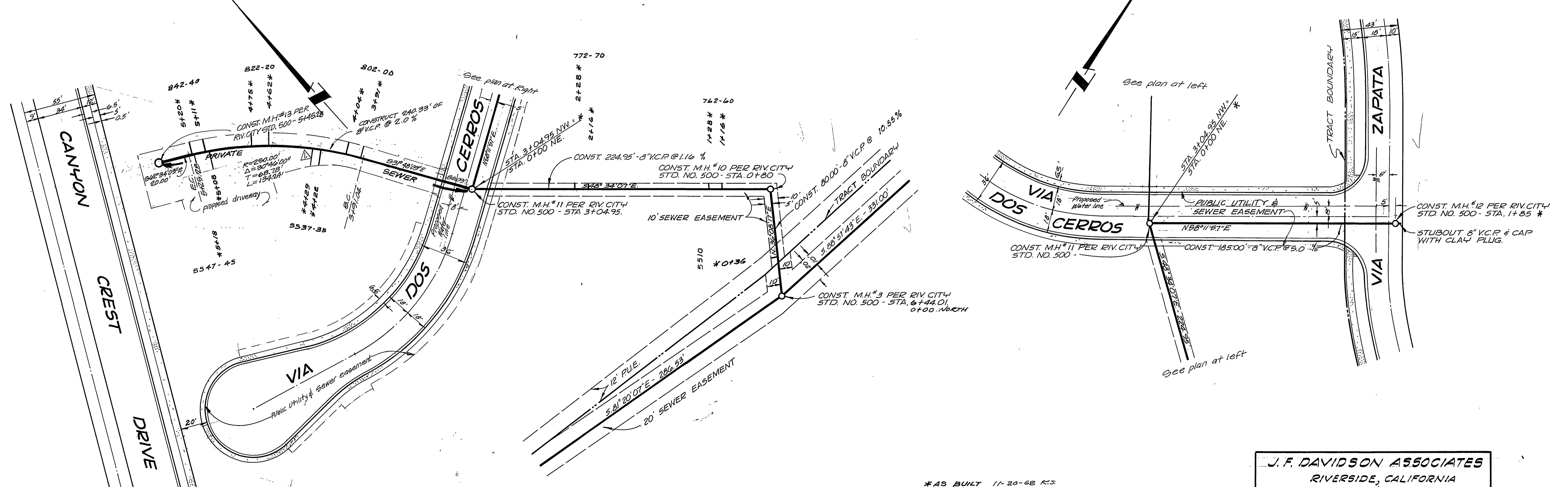
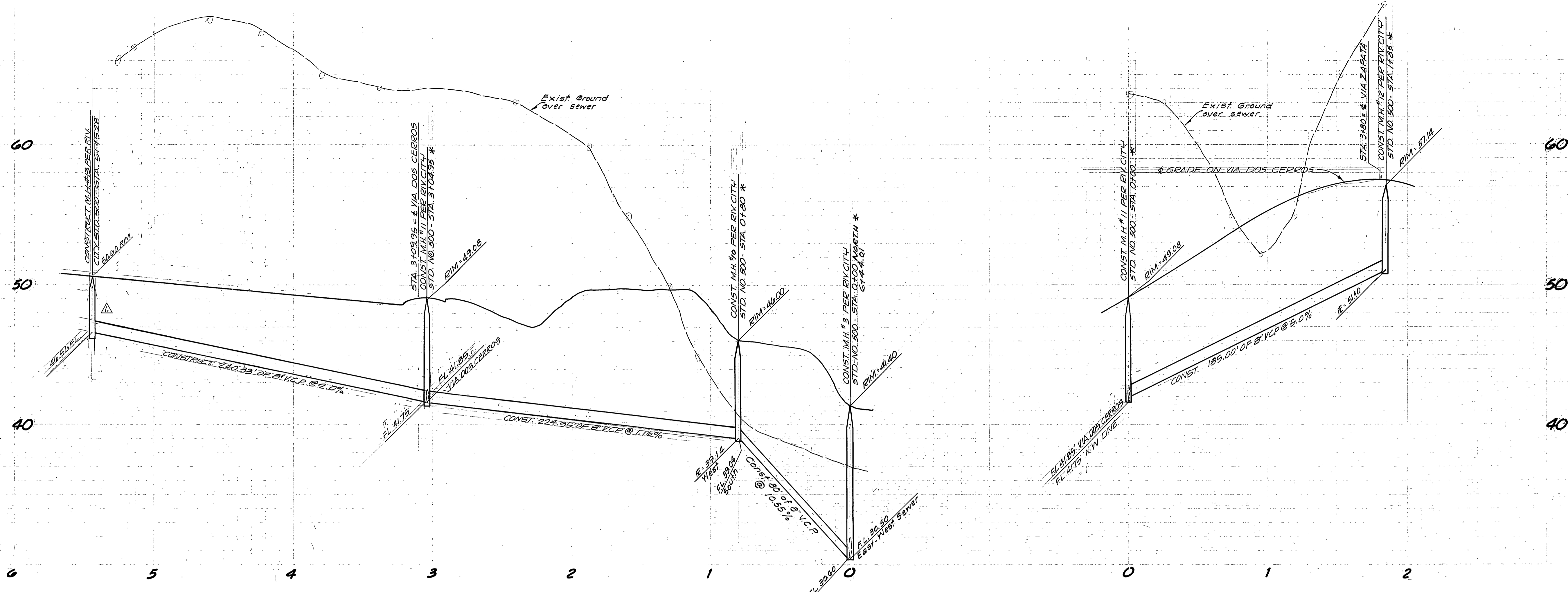
SEWER PLAN AND PROFILE
 TRACT 3802
 VIA ZAPATA & VIA DOS CERROS
 SCALE: HOR. 1"=40' VERT. 1"=8'

DESIGNED BY *K. [Signature]*
 DRAWN BY *G.V. [Signature]*
 RECOMMENDED BY *[Signature]*
 ASST. CITY ENGINEER

CHECKED BY *Hans [Signature]*
 DIRECTOR OF PUBLIC WORKS

APPROVED BY *[Signature]*
 DIRECTOR OF PUBLIC WORKS

NO. **6-602**
 DATE 2-18-66 SHEET 2 OF 3



*AS BUILT 11-20-68 R.S.

J. F. DAVIDSON ASSOCIATES
 RIVERSIDE, CALIFORNIA
 Approved by *J. W. Canty* Date: 7/22/68
 R.E. 17550

CITY OF RIVERSIDE, CALIFORNIA DEPARTMENT OF PUBLIC WORKS		SEWER PLAN AND PROFILE TRACT 3802 EASEMENT & VIA DOS CERROS		PROJECT NO. 8-602 S-602
APPROVED BY OFFICE ENGINEER PARK DEPARTMENT TRAFFIC DIVISION ASSISTANT CITY ENGINEER	BY 7/16/68 [Signature]	DATE 7/16/68	APPROVED BY DIRECTOR OF PUBLIC WORKS [Signature]	SHEET 3 OF 3
DESIGNED BY <i>W. C. [Signature]</i>	DRAWN BY <i>[Signature]</i>	CHECKED BY <i>[Signature]</i>	DATE 9-27-68	FILE NO.

HORIZ. SCALE: 1" = 40' VERT. SCALE: 1" = 4'