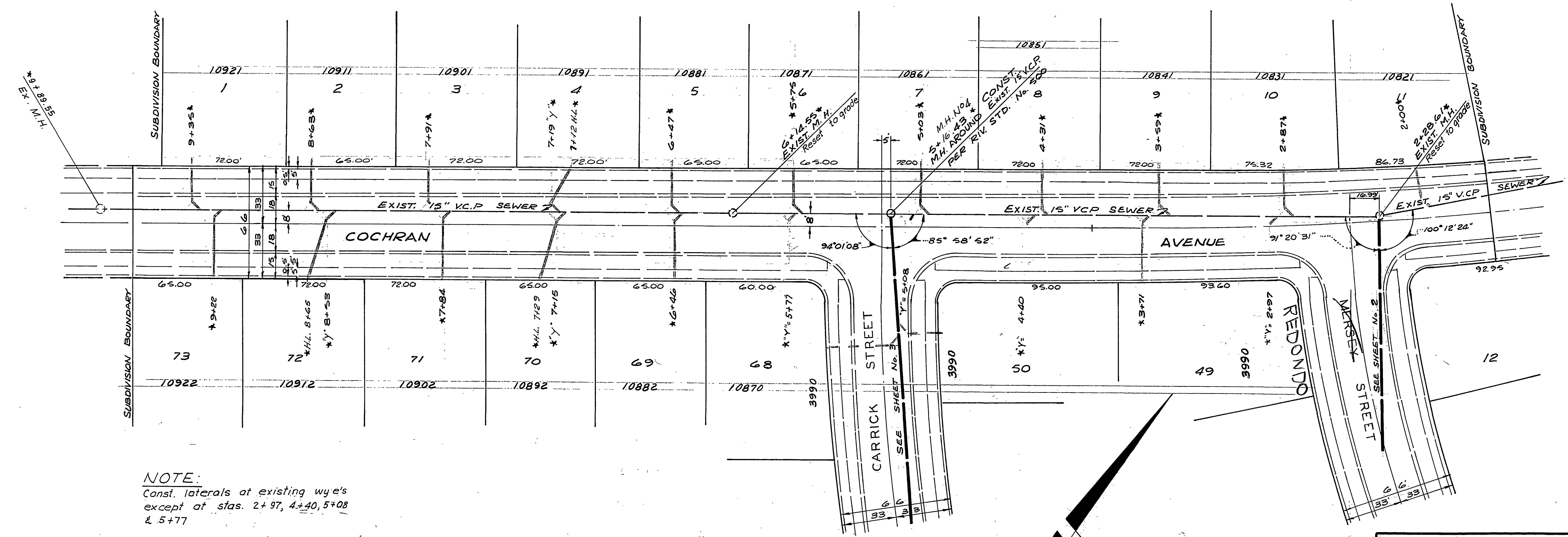


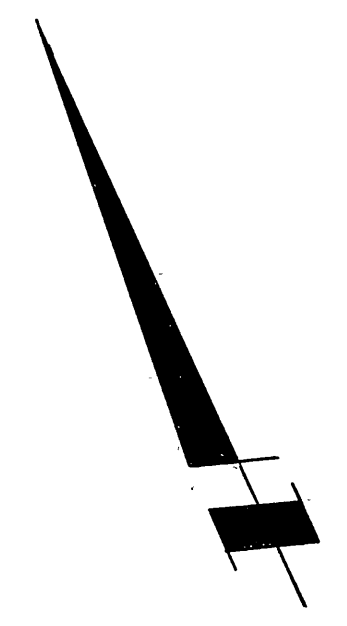
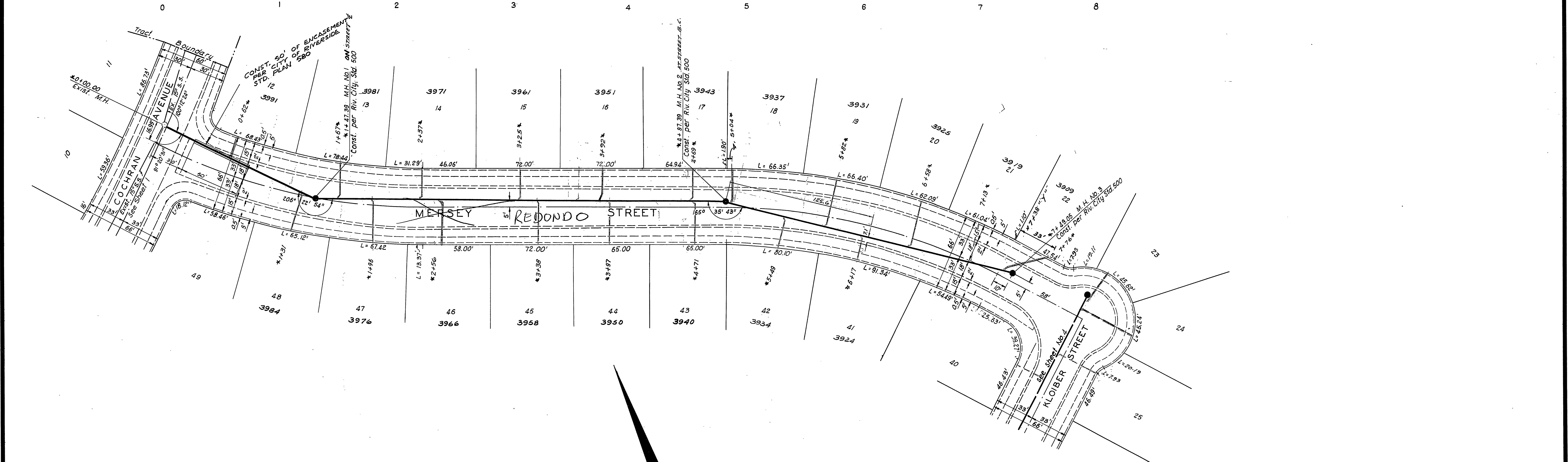
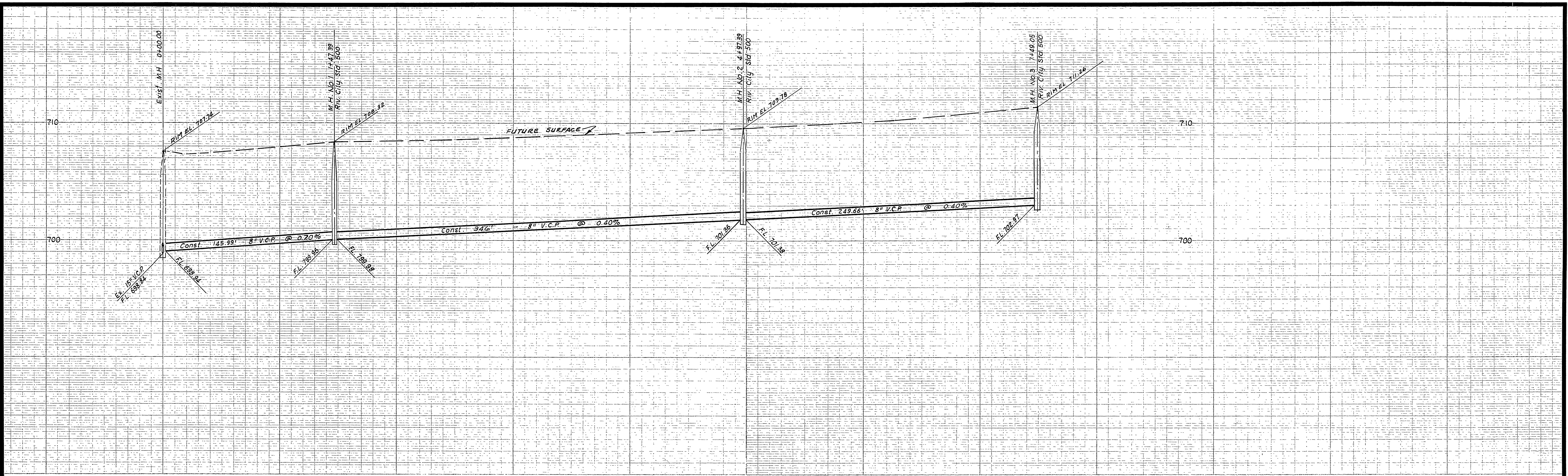
### GENERAL NOTES

1. CONSTRUCTION SHALL BE IN ACCORDANCE WITH THE CITY OF RIVERSIDE, DEPARTMENT OF PUBLIC WORKS, STANDARD SPECIFICATIONS No. 461 AND STANDARD DRAWINGS.
2. IT SHALL BE THE RESPONSIBILITY OF THE CONTRACTOR TO CLEAR THE RIGHT OF WAY IN ACCORDANCE WITH THE PROVISIONS OF THE LAW AS IT AFFECTS EACH UTILITY INCLUDING IRRIGATION LINES AND APPURTENANCE AND AT NO COST TO THE CITY.
3. JOINTS IN VITRIFIED CLAY PIPE SEWER SHALL CONFORM TO ASTM STANDARD C-426-GOT, OR THE LATEST REVISION THEREOF.
4. PIPE SHALL BE BEDDED PER CASE II, STANDARD DRAWING No. 452, UNLESS OTHERWISE SPECIFIED ON PLAN.
5. LOCATION OF WYES AND LATERALS TO BE DETERMINED IN THE FIELD.
6. ALL STUBS AND LATERALS TO BE CONSTRUCTED IN ACCORDANCE WITH STANDARD DRAWING No. 562. STUBS SHALL BE PLUGGED AND CAPPED.



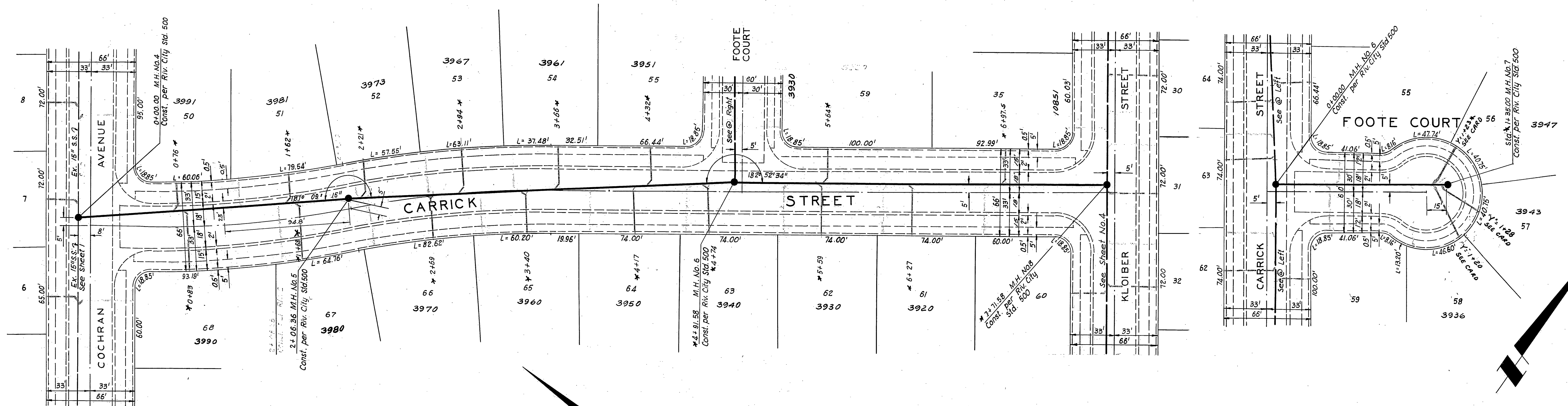
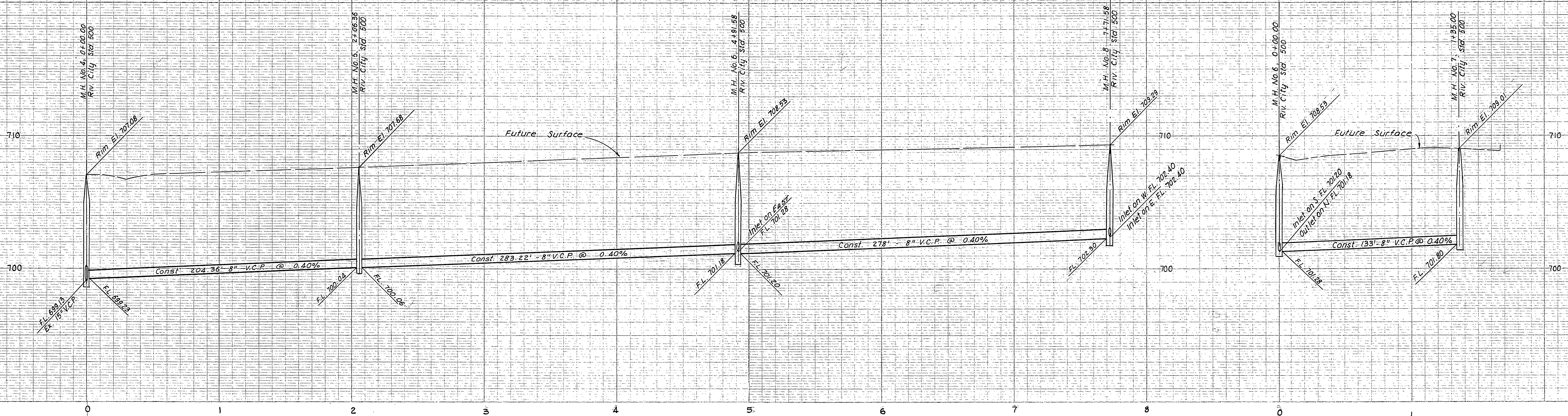
**NOTE:**  
 Const. laterals at existing wye's  
 except at stas. 2+97, 4+40, 5+08  
 & 5+77

BENCH MARK EL. 703.93 Riverside County B.M. No. 7 Chiseled "X" on S.E. corner of bottom conc. step @ main entrance to church on N.W. corner of Hole Ave. & Jones Ave.	<b>TECHNOLOGICAL ENGINEERING CORPORATION</b> PICO RIVERA CALIFORNIA RE 7830 APPROVED BY: <i>[Signature]</i> DATE: <i>Nov. 20, 65</i>	INDEXED HD PROJECT NO. <b>S-603</b> SHEET <b>1</b> OF <b>4</b> FILE NO.																												
* As built BE 7/2/65	<b>CITY OF RIVERSIDE, CALIFORNIA</b> <b>DEPARTMENT OF PUBLIC WORKS</b>	SEWER IMPROVEMENTS TRACT NO. 3181 COCHRAN AVENUE MERSEY ST. TO 9+89.55																												
<table border="1" style="width: 100%; border-collapse: collapse;"> <tr> <th>MARK</th> <th>REVISIONS</th> <th>APPR.</th> <th>DATE</th> </tr> <tr> <td> </td> <td> </td> <td> </td> <td> </td> </tr> </table>	MARK	REVISIONS	APPR.	DATE					<table border="1" style="width: 100%; border-collapse: collapse;"> <tr> <td>APPROVED BY</td> <td>BY</td> <td>DATE</td> <td>APPROVED BY</td> </tr> <tr> <td>OFFICE ENGINEER</td> <td><i>[Signature]</i></td> <td><i>3-5</i></td> <td><i>[Signature]</i></td> </tr> <tr> <td>PARK DEPARTMENT</td> <td> </td> <td> </td> <td>DIRECTOR OF PUBLIC WORKS</td> </tr> <tr> <td>TRAFFIC DIVISION</td> <td> </td> <td> </td> <td> </td> </tr> <tr> <td>ASSISTANT CITY ENG.</td> <td> </td> <td> </td> <td> </td> </tr> </table>	APPROVED BY	BY	DATE	APPROVED BY	OFFICE ENGINEER	<i>[Signature]</i>	<i>3-5</i>	<i>[Signature]</i>	PARK DEPARTMENT			DIRECTOR OF PUBLIC WORKS	TRAFFIC DIVISION				ASSISTANT CITY ENG.				HORIZ. SCALE: 1" = 40' VERT. SCALE: 1" = 4'
MARK	REVISIONS	APPR.	DATE																											
APPROVED BY	BY	DATE	APPROVED BY																											
OFFICE ENGINEER	<i>[Signature]</i>	<i>3-5</i>	<i>[Signature]</i>																											
PARK DEPARTMENT			DIRECTOR OF PUBLIC WORKS																											
TRAFFIC DIVISION																														
ASSISTANT CITY ENG.																														
DESIGNED BY: _____ DRAWN BY: <i>[Signature]</i> CHECKED BY: <i>[Signature]</i>		DATE: <i>3-5-65</i>																												

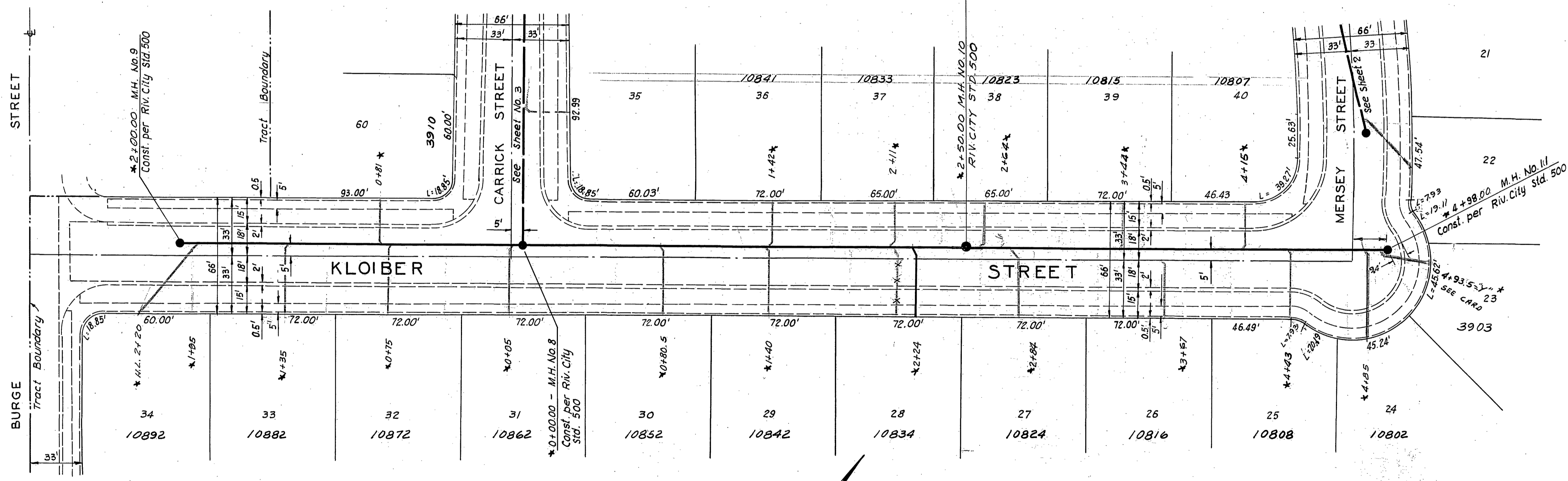
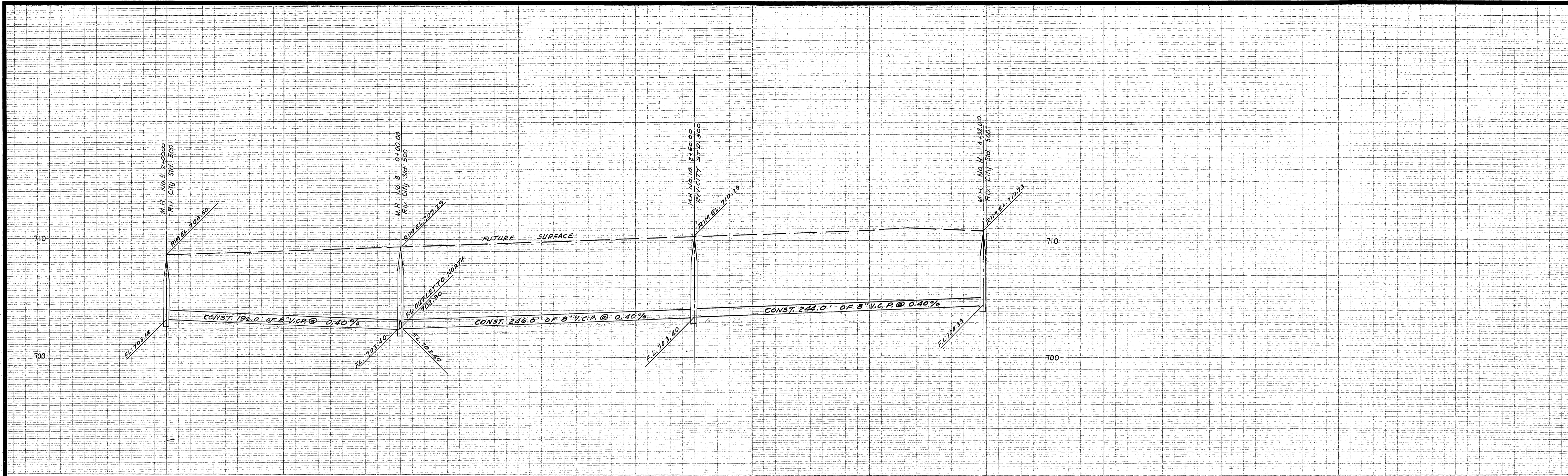


BENCH MARK EL. 703.93 RIVERSIDE COUNTY B.M. NO. 7, CHISELED "X" ON S.E. CORNER OF BOTTOM CONC. STEP @ MAIN ENTRANCE TO CHURCH ON N.W. CORNER OF HOLE AVE. & JONES ST.		TECHNOLOGICAL ENGINEERING CORPORATION PICO RIVERA CALIFORNIA RE 7830 APPROVED BY <i>[Signature]</i> DATE <i>Nov. 29, 64</i>	
CITY OF RIVERSIDE, CALIFORNIA DEPARTMENT OF PUBLIC WORKS		SEWER IMPROVEMENTS TRACT NO 3181 MERSEY STREET COCHRAN AVE. TO KLOIBER ST.	
PROJECT NO. S-603		SHEET 2 OF 4	
HORIZ. SCALE: 1" = 40'		VERT. SCALE: 1" = 4'	

* As built BE 7/2/65	
APPROVED BY	DATE
OFFICE ENGINEER	3-5
PARK DEPARTMENT	
TRAFFIC DIVISION	
ASSISTANT CITY ENG.	7-7
DESIGNED BY	DRAWN BY H.A.G. CHECKED BY B.G.



* As built BE 7/21/65		<b>BENCH MARK</b> EL: 703.93 Riverside County B.M. No. 7. Chiseled "X" on S.E. corner of bottom conc. step @ main entrance to church on N.W. corner of Hole Ave. & Jones Ave.		<b>TECHNOLOGICAL ENGINEERING CORPORATION</b> PICO RIVERA CALIFORNIA RE.7830 APPROVED BY <i>[Signature]</i> DATE Nov. 20, 64	
<b>CITY OF RIVERSIDE, CALIFORNIA</b> DEPARTMENT OF PUBLIC WORKS		APPROVED BY <i>[Signature]</i> DATE 3-8-65 DIRECTOR OF PUBLIC WORKS		PROJECT NO. <b>S-603</b>	
DESIGNED BY <i>[Signature]</i> DRAWN BY <i>[Signature]</i> CHECKED BY <i>[Signature]</i>		DATE 3-8-65		SHEET 3 OF 4	
		HORIZ. SCALE: 1" = 40' VERT. SCALE: 1" = 4'		FILE NO.	



BENCH MARK. EL. 703.93 RIVERSIDE COUNTY B.M. NO. 7. CHISELED "X" ON S.E. CORNER OF BOTTOM CONC. STEP @ MAIN ENTRANCE TO CHURCH ON N.W. CORNER OF HOLE AVE. & JONES AVE.		TECHNOLOGICAL ENGINEERING CORPORATION PICO RIVERA, CALIFORNIA RE. 7830 APPROVED BY <i>[Signature]</i> DATE <i>Nov. 20, 64</i>	
* As built BE 7/21/65		PROJECT NO.	
CITY OF RIVERSIDE, CALIFORNIA DEPARTMENT OF PUBLIC WORKS		SEWER IMPROVEMENTS TRACT NO. 3181 KLOIBER STREET BURGE ST. TO MERSEY ST.	
APPROVED BY: <i>[Signature]</i> DATE: 3-8-65 OFFICE ENGINEER: <i>[Signature]</i> DATE: 3-8-65 PARK DEPARTMENT: <i>[Signature]</i> DATE: 3-8-65 TRAFFIC DIVISION: <i>[Signature]</i> DATE: 3-8-65 ASSISTANT CITY ENG. <i>[Signature]</i> DATE: 3-8-65		SHEET 4 OF 4	
DESIGNED BY: <i>[Signature]</i> DRAWN BY: <i>[Signature]</i> CHECKED BY: <i>[Signature]</i>		HORIZ. SCALE: 1" = 40' VERT. SCALE: 1" = 4' FILE NO.	