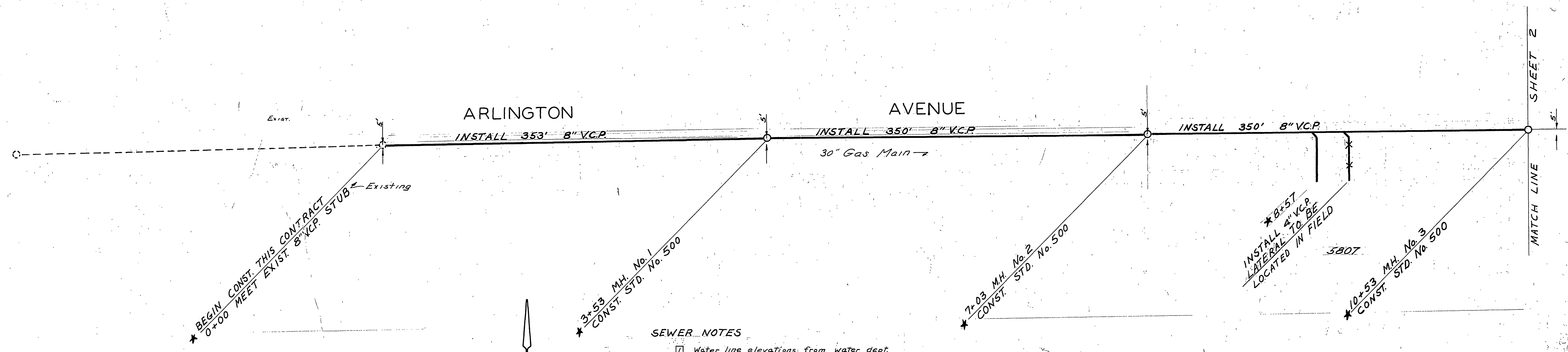


SCALES
 HOR 1"=50'
 VERT 1"=5'
 FB 510,538



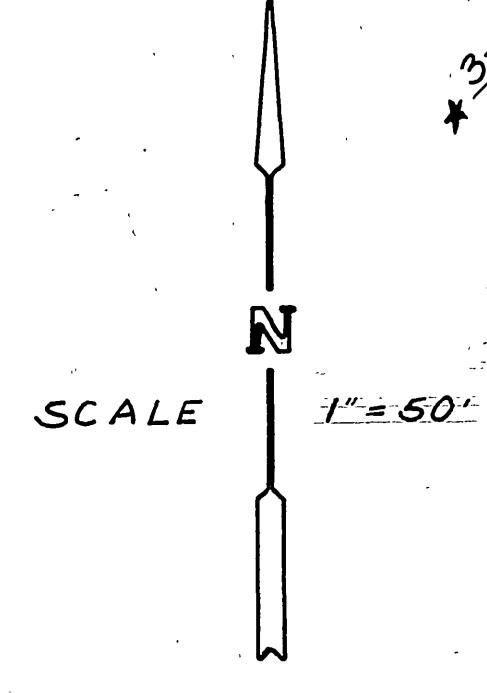
* BEGIN CONST. THIS CONTRACT
 0+00 MEET EXIST. 8" V.C.P. STUB

* 3+53 M.H. No. 1
 CONST. STD. No. 500

* 7+03 M.H. No. 2
 CONST. STD. No. 500

* 8+57
 INSTALL 4" V.C.P.
 LATERAL TO BE
 LOCATED IN FIELD

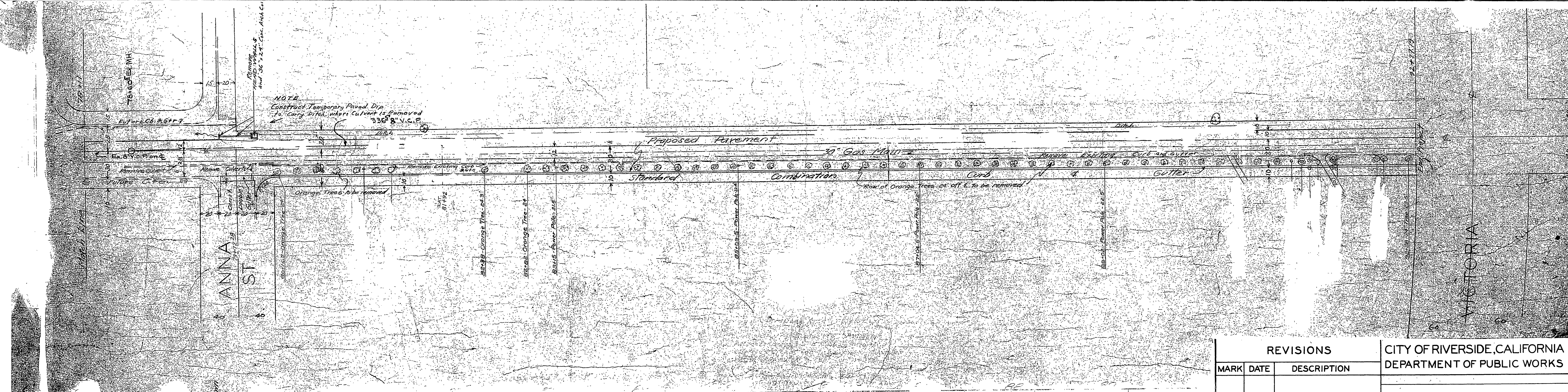
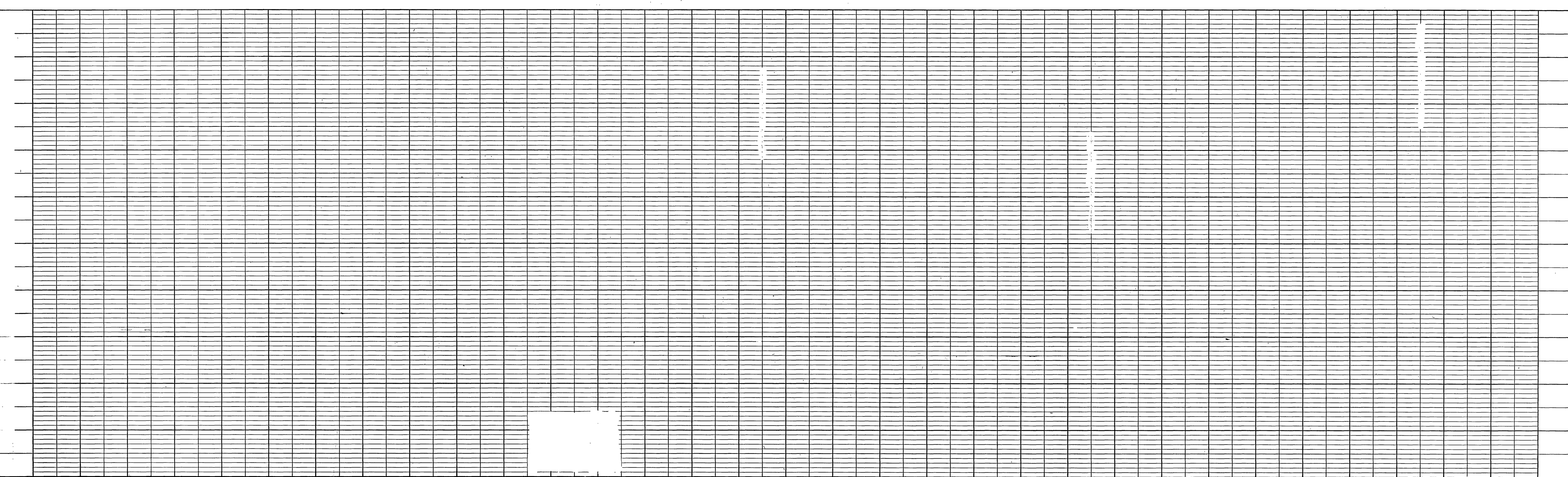
* 10+53 M.H. No. 3
 CONST. STD. No. 500



- SEWER NOTES
- 1 Water line elevations from water dept. plans.
 - 2 The construction indicated for Arlington Ave. between Anna St. and Victoria Ave. is complete except for the sewer. Disregard all construction notes except for sewer installation.
 - 3 Replace paving with 3" AC. over 4" AB.
 - 4 Location of utilities shown on plan is only approximate. Contractor is responsible for locating all utilities prior to excavation.
 - 5 See Arlington Ave. Extension Seismic Report included herein for soil and rock strata information.

* AS BUILT 12-7-65 HB

CITY OF SAN FRANCISCO DEPARTMENT OF PUBLIC WORKS	
SELECT SYSTEM PROJECT No. 123	
ARLINGTON AVE. EXT. UNIT No. 2 SANITARY SEWER EXT.	
DESIGNED BY G. E. Robertson	DRAWN BY J. M. ...
CHECKED BY ...	DATE 5-19-65
PROJECT NO. 5080	SHEET NO. S-612
1 of 5	

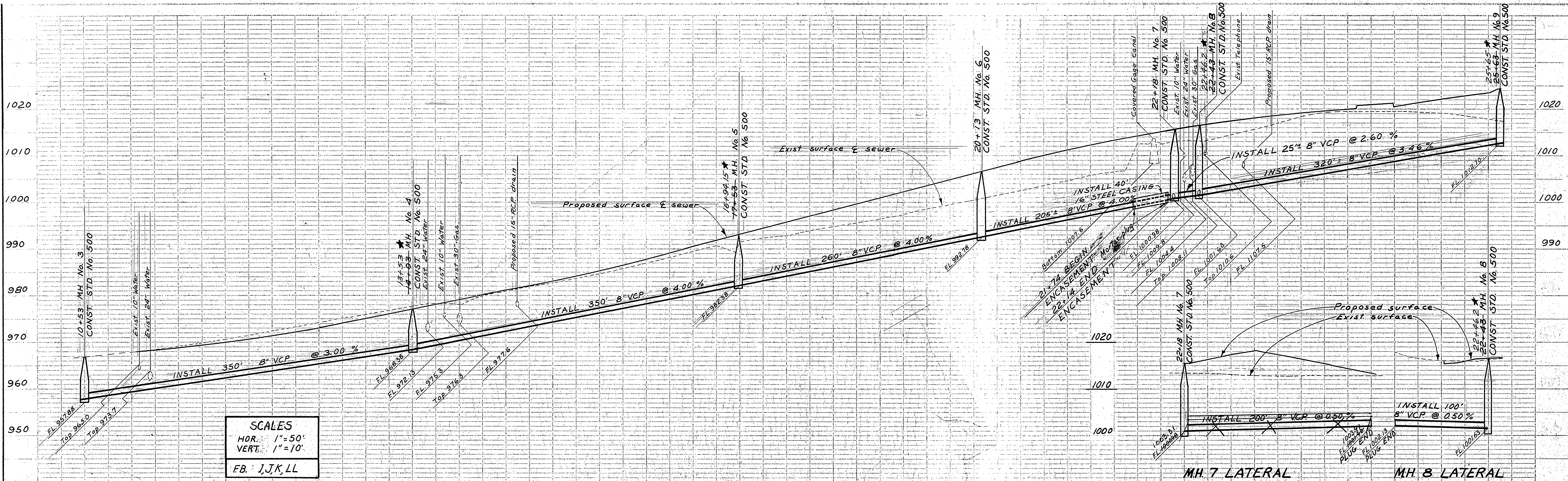


REVISIONS			CITY OF RIVERSIDE, CALIFORNIA DEPARTMENT OF PUBLIC WORKS	
MARK	DATE	DESCRIPTION		

DESIGNED BY	SUBMITTED BY	APPROVED BY	PROJ. NO.
DRAWN BY <i>BE</i>	PARK DEPT. TRAFFIC DIV.	DIRECTOR OF PUBLIC WORKS	S-612
CHECKED BY	RECOMMENDED BY	DATE	SHEET 1 OF 5

PLAN
REMAINING

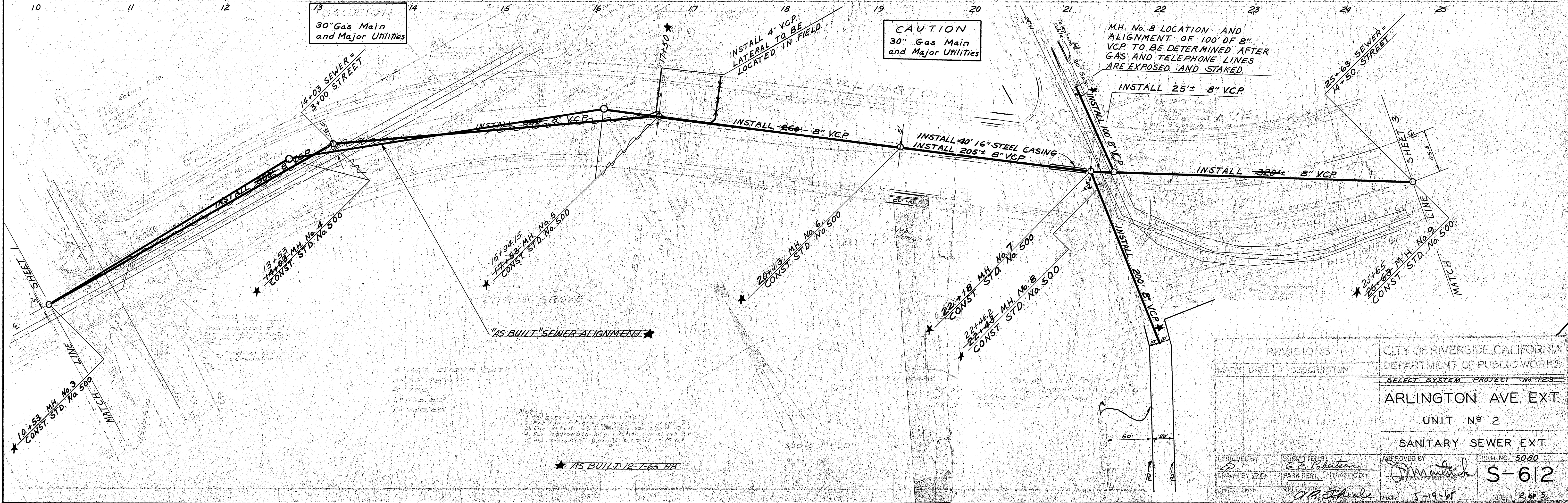
PLAN



SCALES
 HOR. 1"=50'
 VERT. 1"=10'
 FB. I, J, K, LL

CAUTION
 30" Gas Main
 and Major Utilities

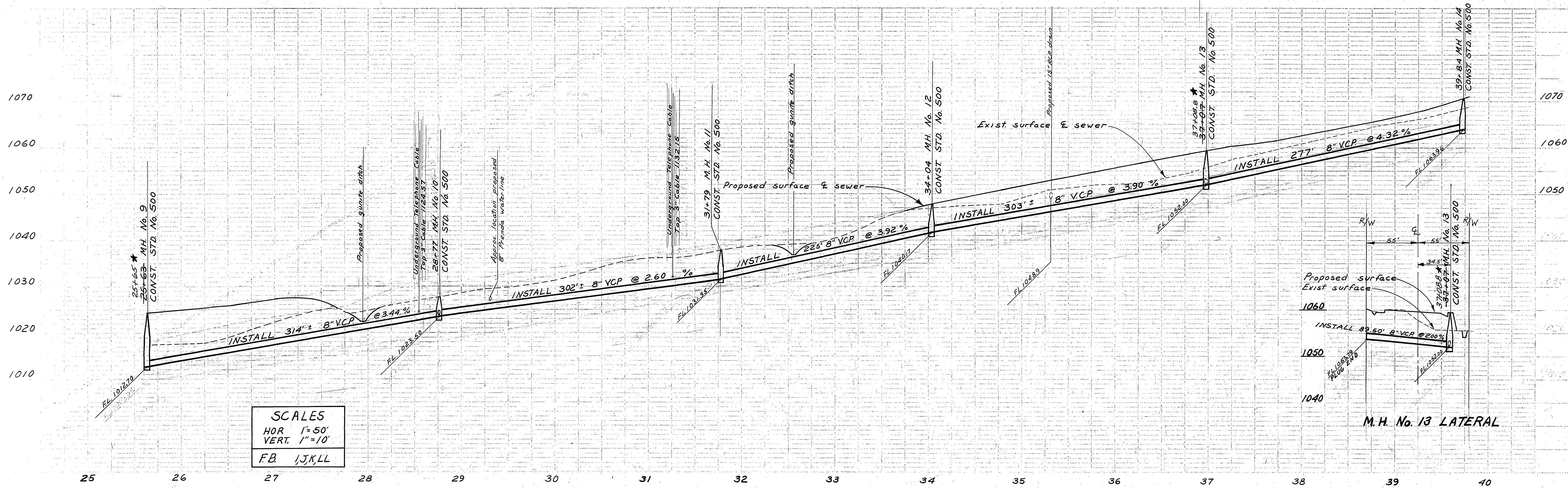
CAUTION
 30" Gas Main
 and Major Utilities



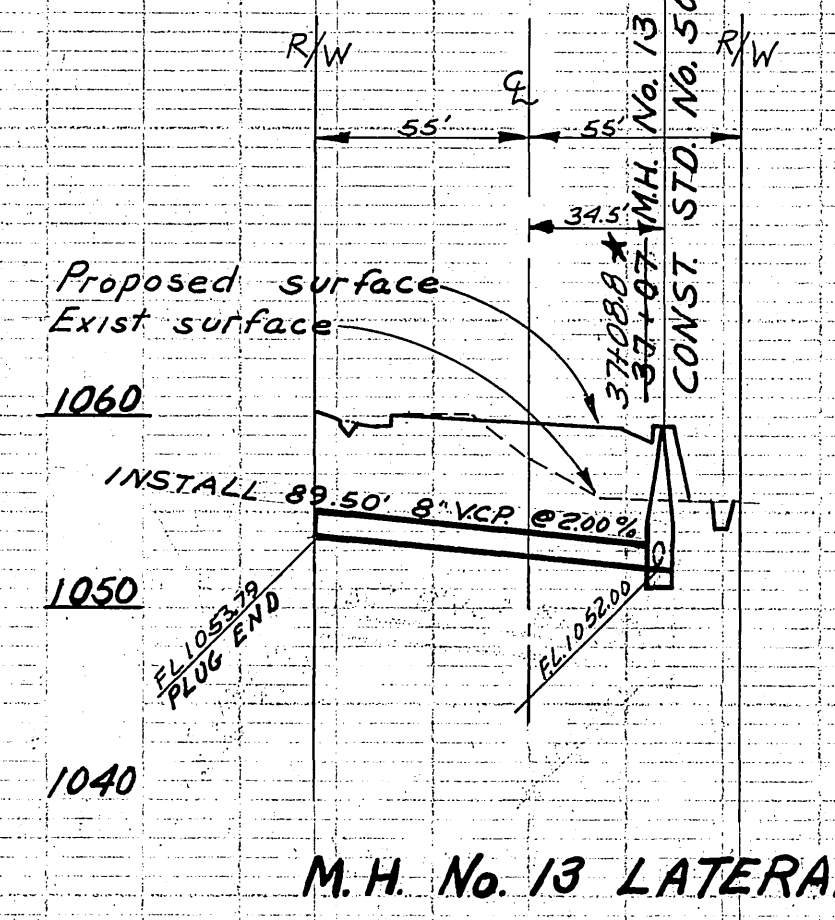
REVISIONS		CITY OF RIVERSIDE, CALIFORNIA DEPARTMENT OF PUBLIC WORKS	
MARK	DATE	DESCRIPTION	
			SELECT SYSTEM PROJECT No. 123
			ARLINGTON AVE. EXT.
			UNIT No. 2
			SANITARY SEWER EXT.
DESIGNED BY	APPROVED BY	DATE	SHEET 2 OF 5
DRAWN BY		5-19-65	S-612

AS BUILT SEWER ALIGNMENT

AS BUILT 12-7-65 HB



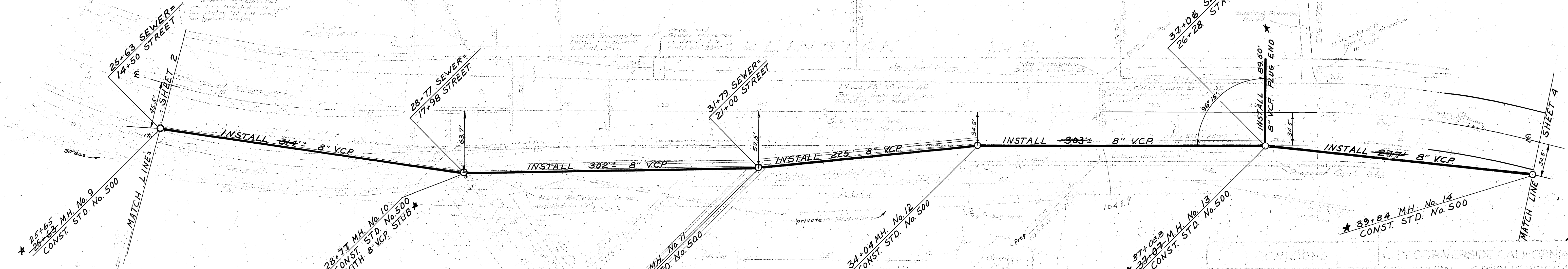
SCALES
 HOR 1"=50'
 VERT 1"=10'
 FB 1,JK,LL



IMP CURVE DATA
 25+65 to 28+77
 L=700'
 E=518.18'
 T=572.16'

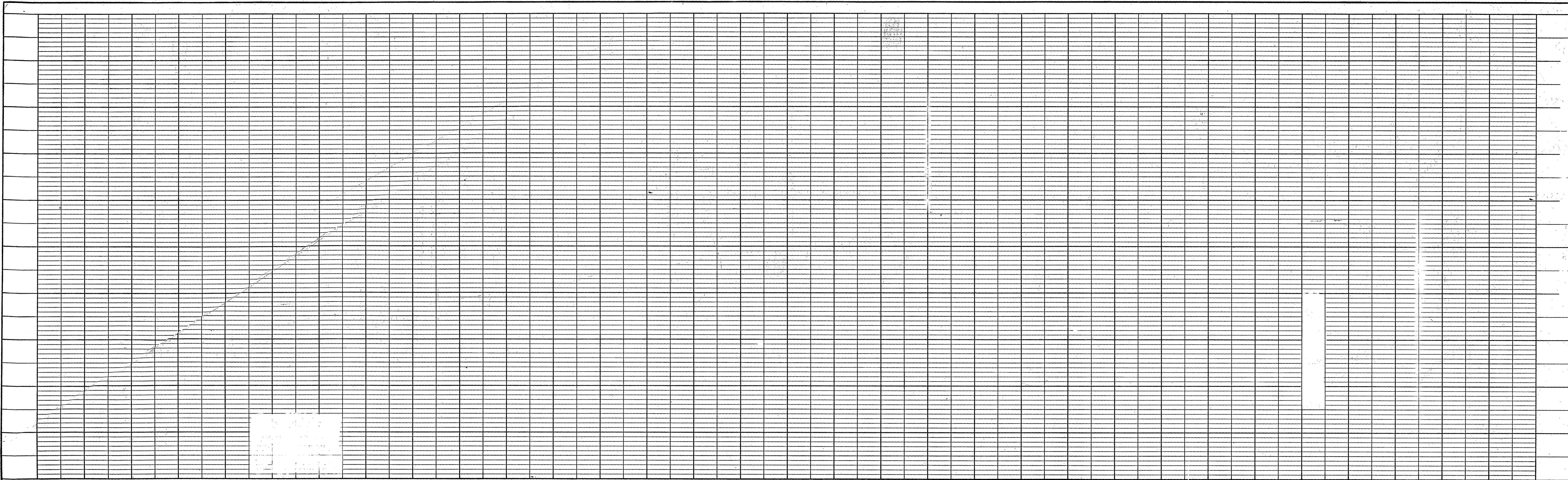
CAUTION
 Underground Telephone Cable

CAUTION
 30" Gas main and major underground utility lines.

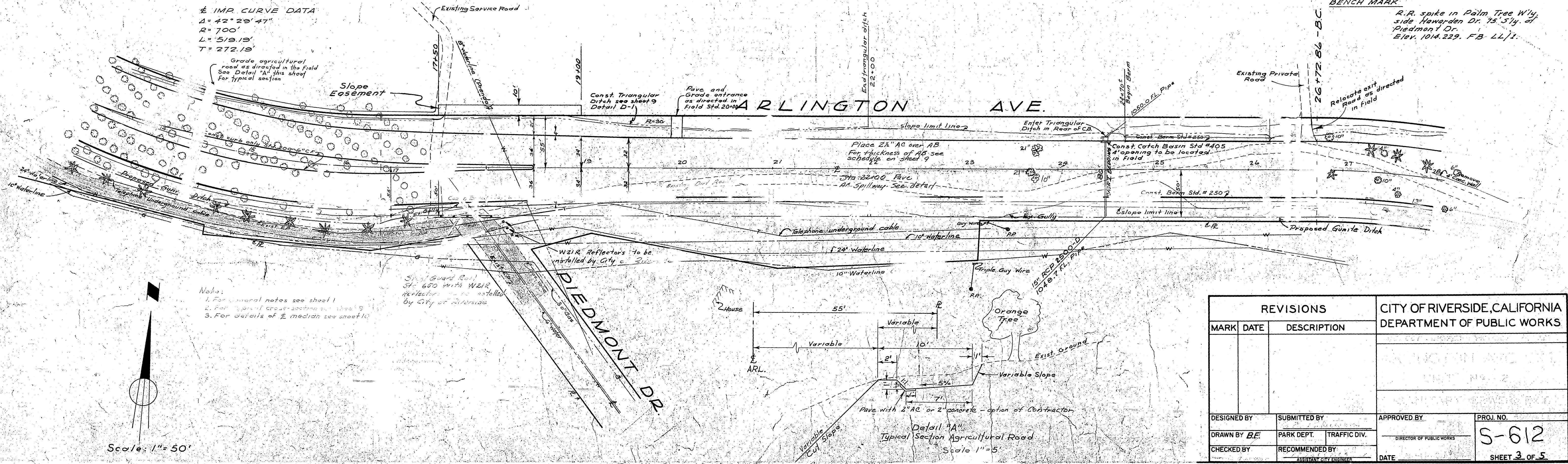


REVISIONS		CITY OF VERSIDE CALIFORNIA DEPARTMENT OF PUBLIC WORKS	
NO.	DESCRIPTION	SELECT SYSTEM PROJECT No. 123	
		ARLINGTON AVE. EXT.	
		UNIT No. 2	
		SANITARY SEWER EXT.	
		DATE 5-19-61	FROM NO. 5020
		S-612	
		SHEET 3 OF 5	

AS BUILT 12-7-65 HB

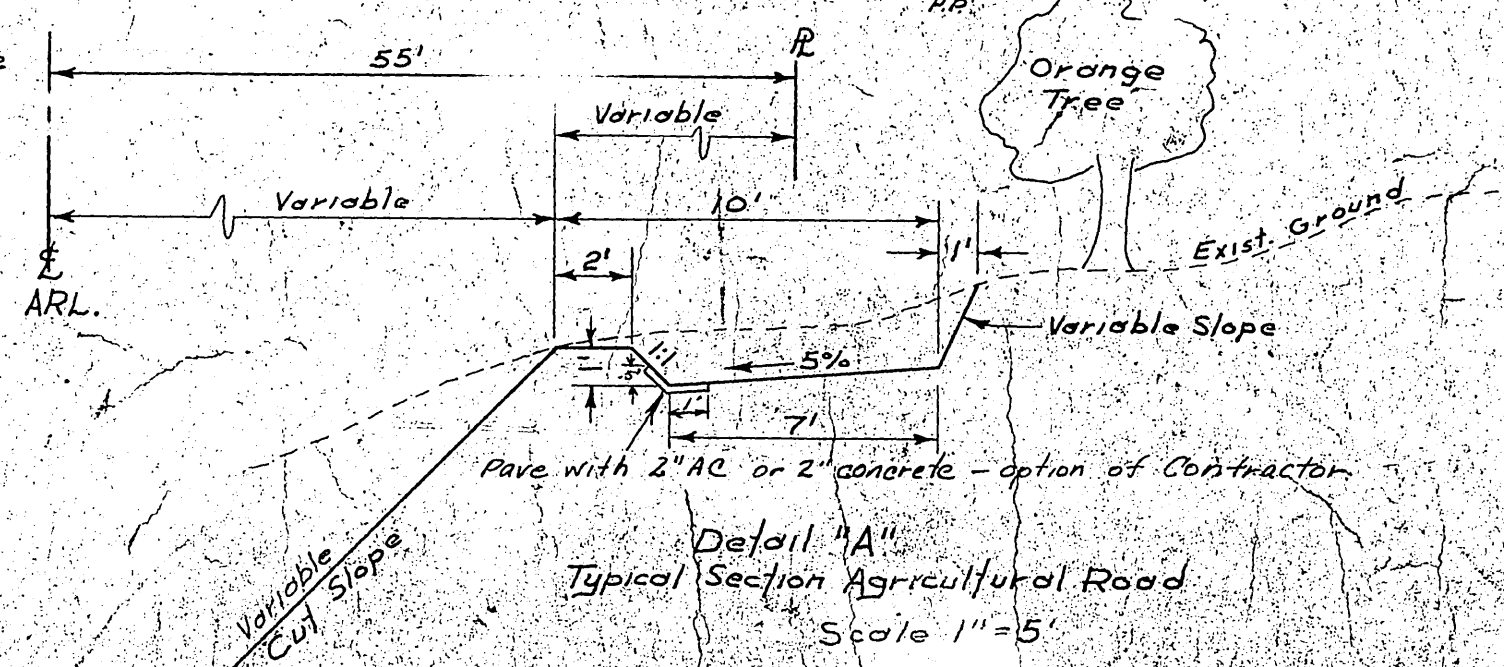
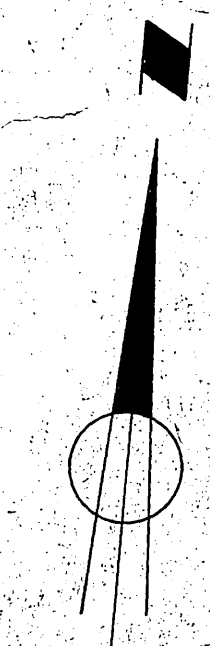


IMP CURVE DATA
 $\Delta = 42^\circ 29' 47''$
 $R = 700'$
 $L = 519.19'$
 $T = 272.19'$

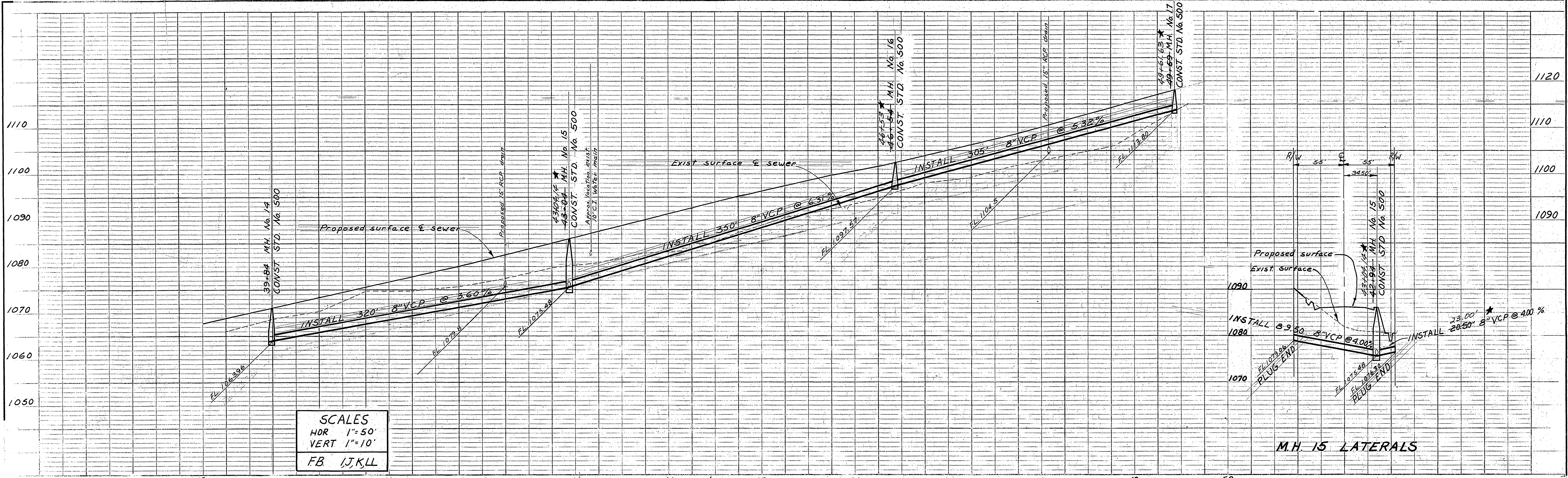


BENCH MARK
 R.R. spike in Palm Tree W/ly side Howard Dr. 75.5'ly of Piedmont Dr. Elev. 1014.229. FB LL/1.

Notes:
 1. For unusual notes see sheet 1
 2. For special cross-sections see sheet 9
 3. For details of E median see sheet 10

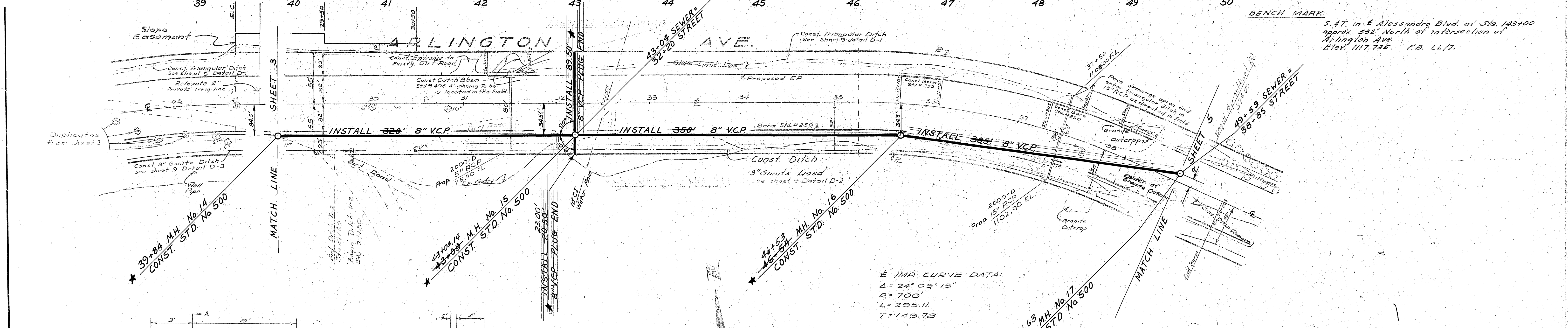


REVISIONS			CITY OF RIVERSIDE, CALIFORNIA DEPARTMENT OF PUBLIC WORKS	
MARK	DATE	DESCRIPTION		
DESIGNED BY	SUBMITTED BY	APPROVED BY	PROJ. NO.	
DRAWN BY BE	PARK DEPT. TRAFFIC DIV.	DIRECTOR OF PUBLIC WORKS	S-612	
CHECKED BY	RECOMMENDED BY	DATE	SHEET 3 OF 5	



SCALES
HOR 1"=50'
VERT 1"=10'
FB I,J,K,L

M.H. 15 LATERALS

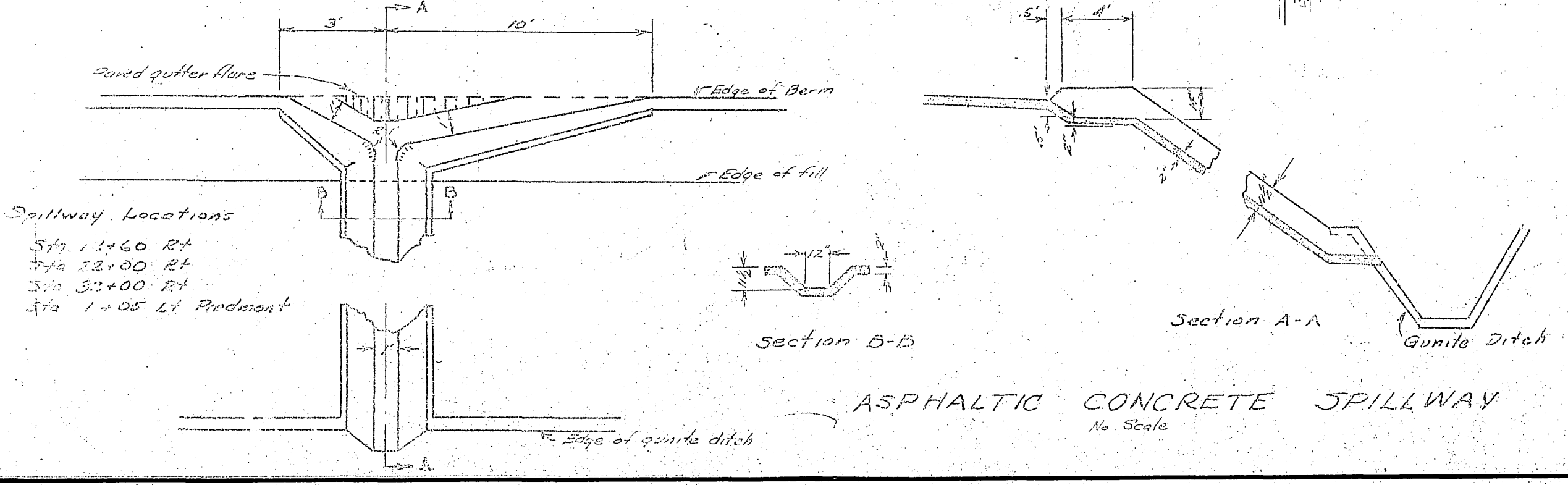


BENCH MARK
5.47 in E Alessandra Blvd at Sta. 143+00
approx. 532' North of intersection of
Arlington Ave.
Elev. 1117.755. F.B. LL/7.

IMP CURVE DATA:
Δ = 24° 09' 15"
R = 700'
L = 295.11
T = 149.78

Notes:
1. For general notes see sheet 1
2. For typical section see sheet 4

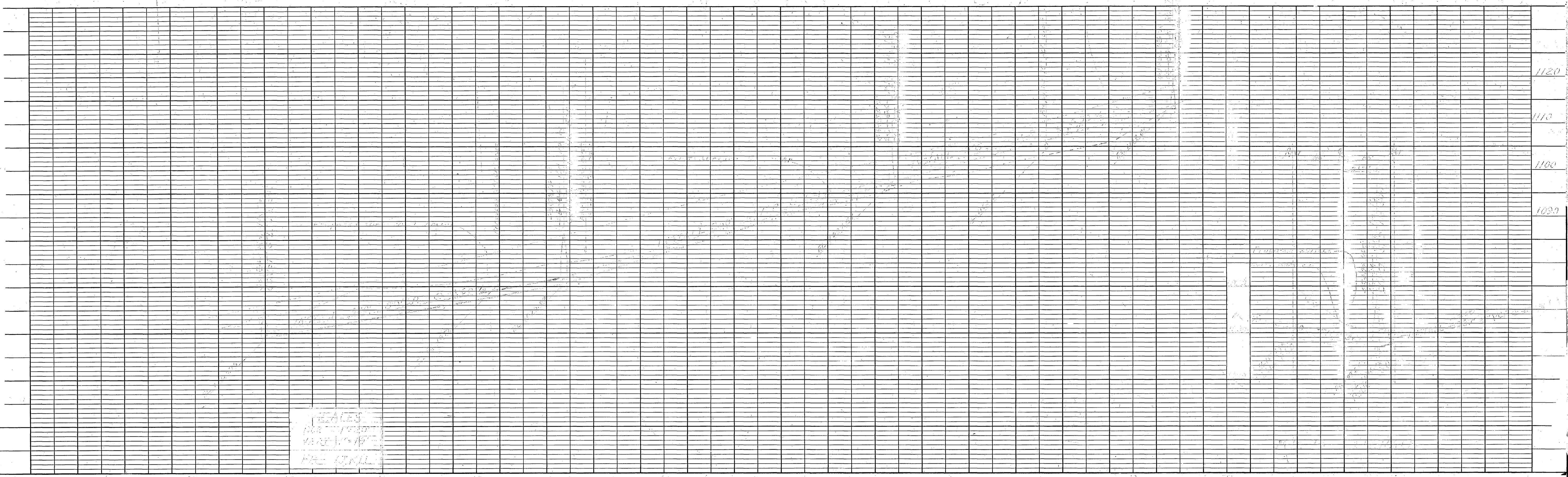
Scale: 1"=50'



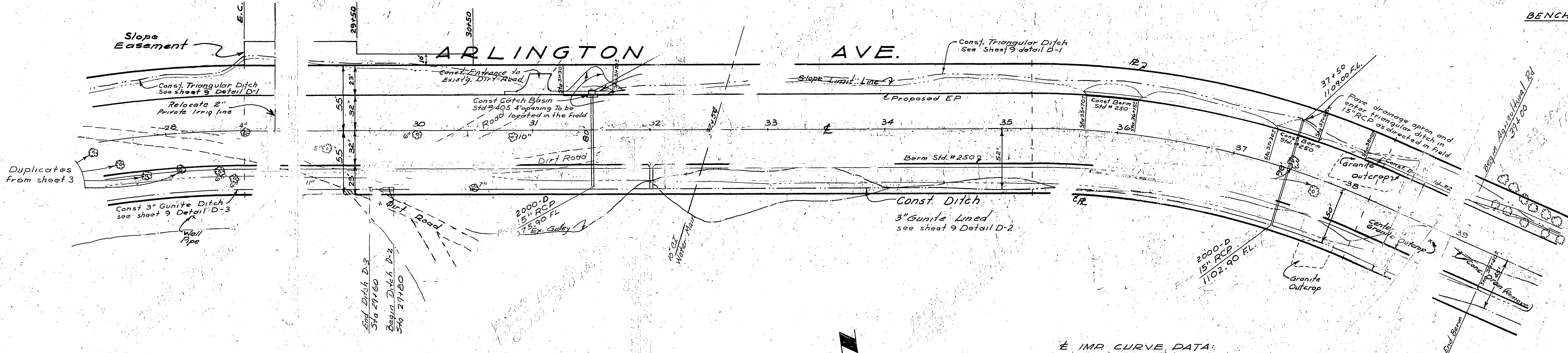
REVISIONS		CITY OF RIVERSIDE, CALIFORNIA DEPARTMENT OF PUBLIC WORKS	
MARK	DATE	DESCRIPTION	
			SELECT SYSTEM PROJECT No. 123
			ARLINGTON AVE. EXT.
			UNIT No. 2
			SANITARY SEWER EXT.
DESIGNED BY P	SUBMITTED BY C.E. Robinson	APPROVED BY J. Martini	PROJ. NO. 5080
DRAWN BY B.E.	PARK DEPT. TRAFFIC DIV.		S-612
CHECKED BY A. Schul	REC'D ENGINEER	DATE 5-19-65	SHEET 4 of 5

AS BUILT 12-7-65 HB

IF NOTED, CORRECTING CHANGE

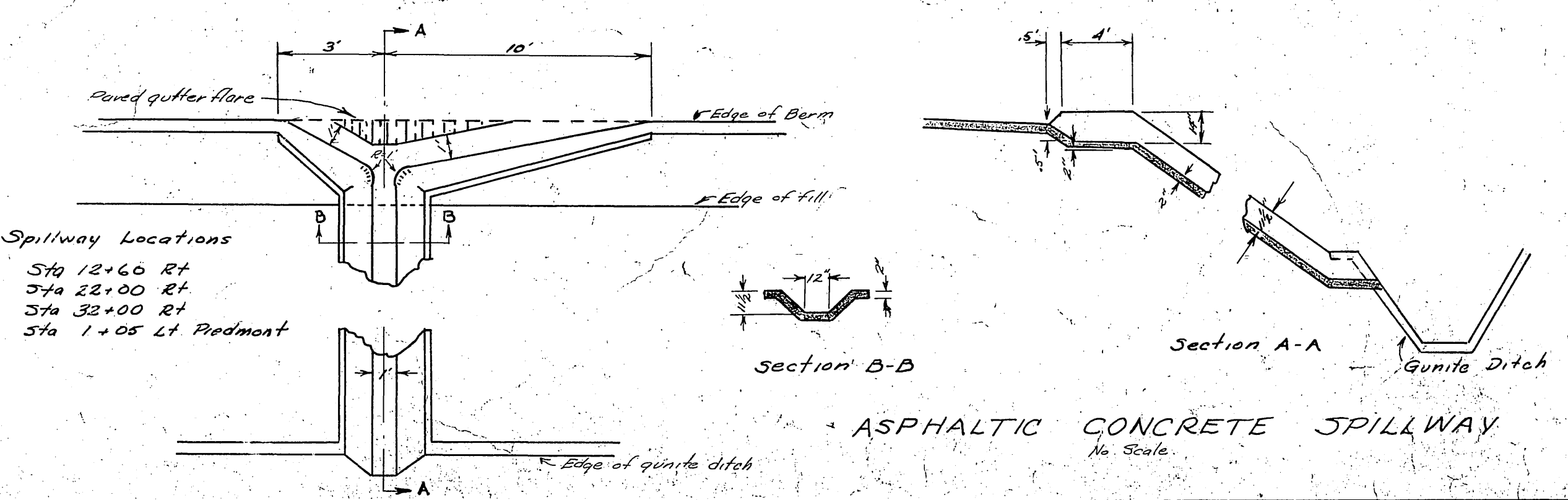
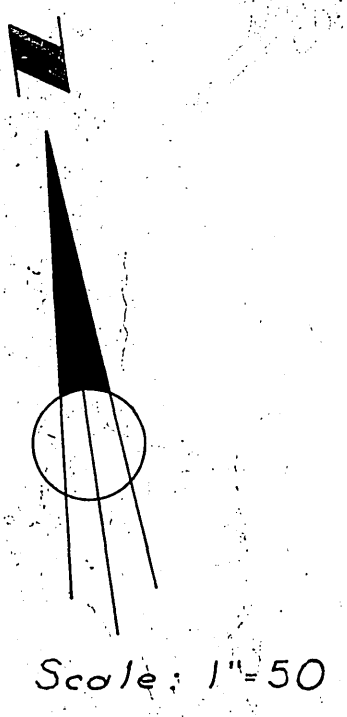


BENCH MARK
S. & T. in E. Alessandro Blvd. at Sta. 123+00
approx. 532' North of intersection of
Arlington Ave.
Elev. 1117.735. F.B. 44/7.

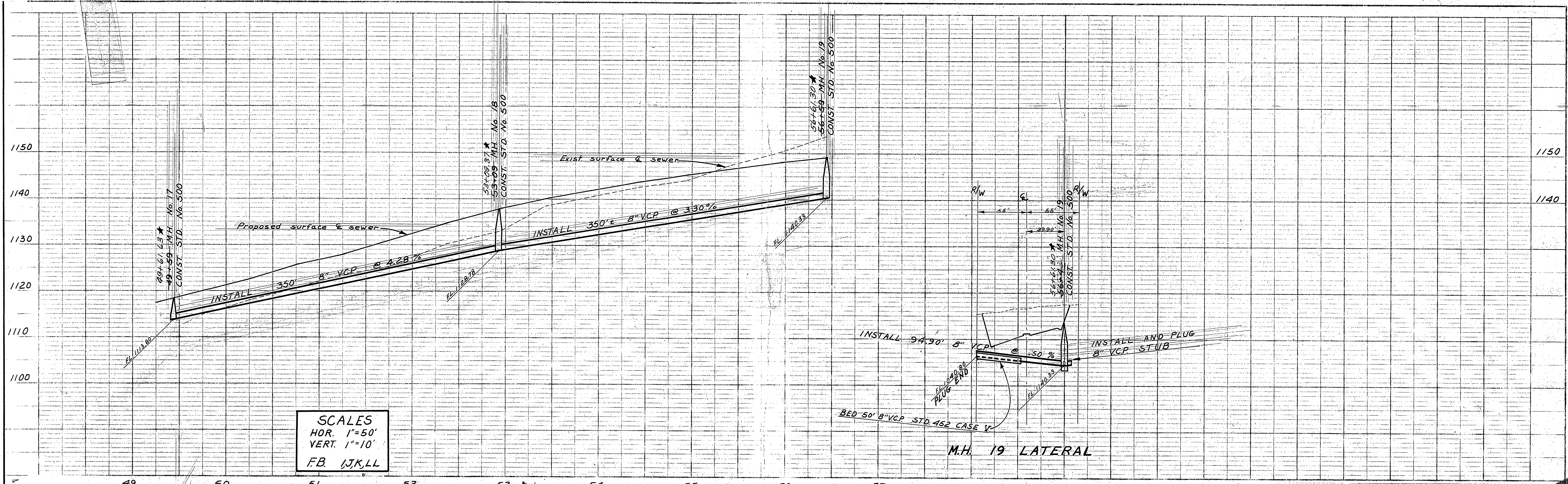


E IMP. CURVE DATA:
 $\Delta = 24^{\circ} 09' 19''$
 $R = 700'$
 $L = 295.11$
 $T = 149.78$

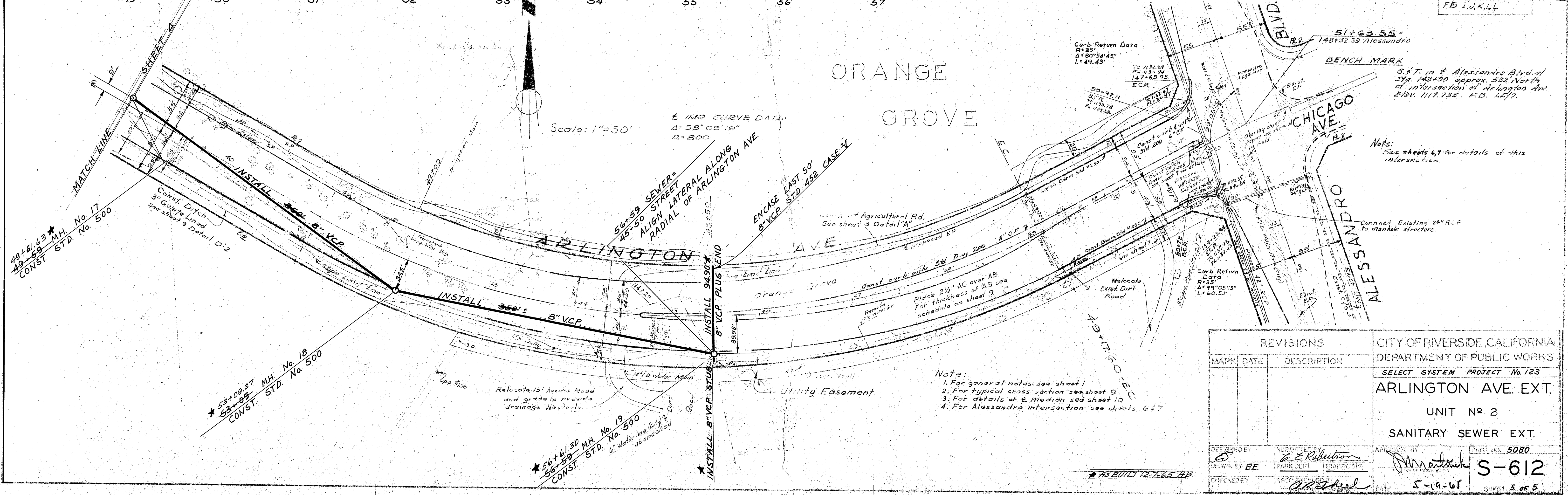
Note:
 1. For general notes see sheet 1
 2. For typical section see sheet 9



REVISIONS			CITY OF RIVERSIDE, CALIFORNIA DEPARTMENT OF PUBLIC WORKS	
MARK	DATE	DESCRIPTION		
			ARLINGTON AVE. EXT. UNIT # 2	
			DRAINAGE SYSTEM EXT.	
DESIGNED BY	SUBMITTED BY	APPROVED BY	PROJ. NO.	
DRAWN BY BE.	PARK DEPT. TRAFFIC DIV.	DIRECTOR OF PUBLIC WORKS	S-612	
CHECKED BY	RECOMMENDED BY	DATE	SHEET 4 OF 5	



SCALES
 HOR. 1"=50'
 VERT. 1"=10'
 FB. J,K,L,L



Scale: 1"=50'
 1/2" IMP. CURVE DATA:
 Δ=58°03'18"
 R=800

ORANGE GROVE

REVISIONS		CITY OF RIVERSIDE, CALIFORNIA DEPARTMENT OF PUBLIC WORKS	
MARK	DATE	DESCRIPTION	
			SELECT SYSTEM PROJECT No. 123
			ARLINGTON AVE. EXT.
			UNIT No. 2
			SANITARY SEWER EXT.
DESIGNED BY	APPROVED BY	PROJECT NO.	5080
UPON BY			S-612
CHECKED BY	DATE		5-9-61
			SHEET 5 OF 5

Note:
 1. For general notes see sheet 1
 2. For typical cross section see sheet 9
 3. For details of 1/2" median see sheet 10
 4. For Alessandro intersection see sheets 6 & 7

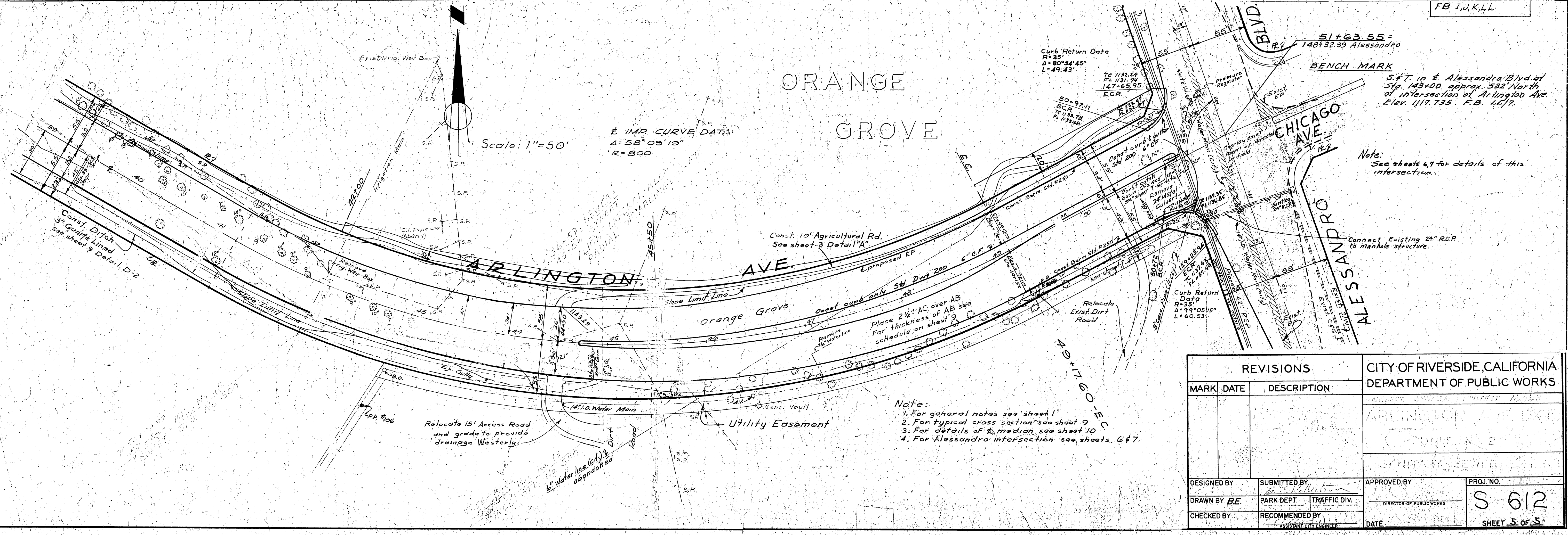
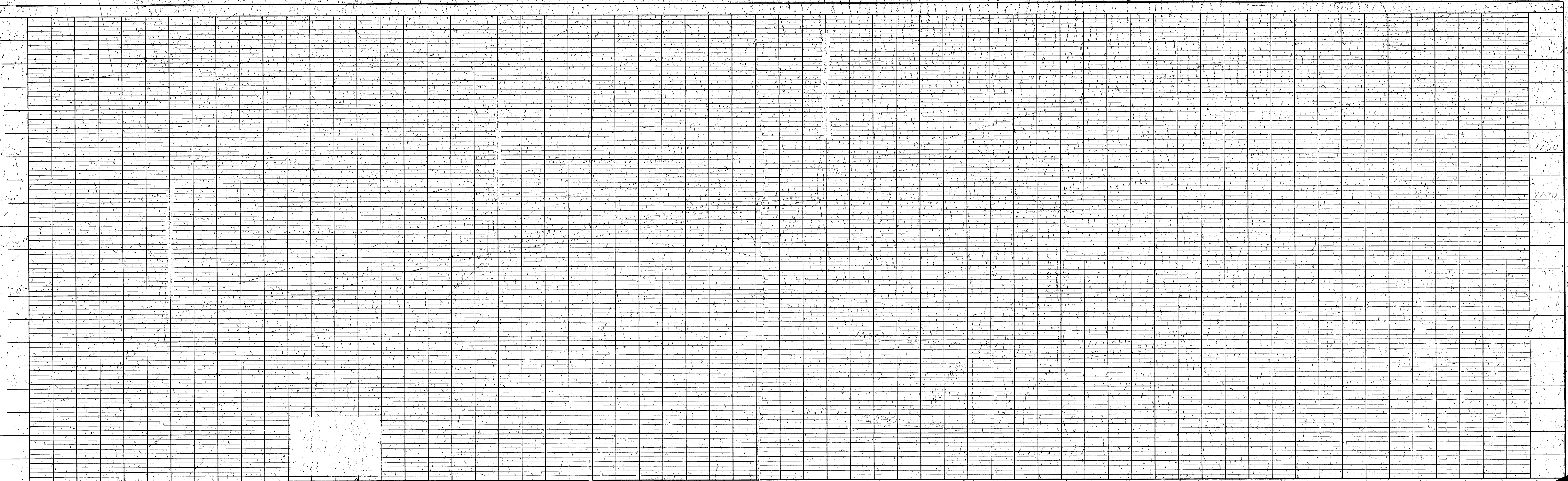
BENCH MARK
 S.F.T. in Alessandro Blvd. at
 Sta. 143+00 approx. 532' North
 of intersection of Arlington Ave.
 Elev. 1117.735. F.B. 4277.

Note:
 See sheets 6, 7 for details of this
 intersection.

Curb Return Data
 R=85'
 Δ=80°54'45"
 L=49.43'

Curb Return Data
 R=35'
 Δ=99°05'15"
 L=60.53'

AS BUILT 12-7-65 HB



REVISIONS		CITY OF RIVERSIDE, CALIFORNIA DEPARTMENT OF PUBLIC WORKS	
MARK	DATE	DESCRIPTION	
DESIGNED BY	SUBMITTED BY	APPROVED BY	PROJ. NO.
DRAWN BY BE	PARK DEPT. TRAFFIC DIV.	DIRECTOR OF PUBLIC WORKS	S 612
CHECKED BY	RECOMMENDED BY	DATE	SHEET 5 OF 5