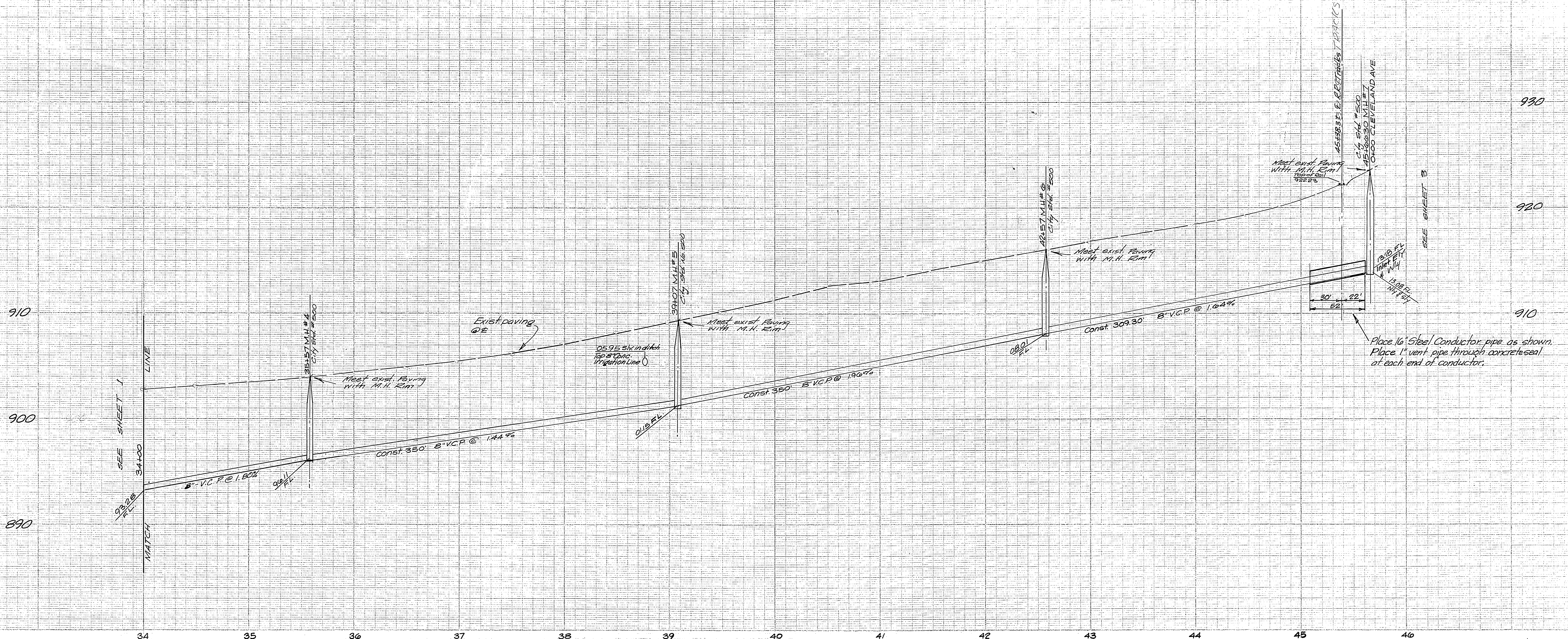


BENCH MARK  
 F.R.R. Spike E/S 36' Palm S.W. Cor. Lincoln & Jefferson  
 60± N.Y. Lincoln 22± S/W Jefferson Elev. 879.72  
 City of Riv. B.M. Steel Rod Base E/S Very Large Eucalyptus  
 N/W Cor. Victoria & Jefferson City F.B. 680/27 Elev. 901.89

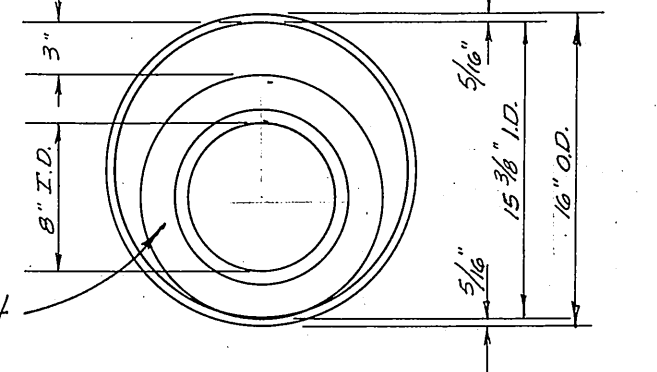
<b>J. F. DAVIDSON ASSOCIATES</b> CIVIL ENGINEERS - SURVEYORS - PLANNERS RIVERSIDE, CALIFORNIA		<b>CITY OF RIVERSIDE, CALIFORNIA</b> DEPARTMENT OF PUBLIC WORKS		<b>TRACT 3239 SEWER EXT.</b> PLAN & PROFILE	PROJECT NO. <b>S-614</b>
APPROVED BY: <i>Robert S. Gynn</i> R.E. No. 13688	DATE: 3-27-65	OFFICE ENGINEER: <i>W.S.</i> PARK DEPARTMENT: <i>W.S.</i> TRAFFIC DIVISION: <i>W.S.</i> ASSISTANT CITY ENG.: <i>W.S.</i>	BY DATE: <i>W.S. 3-29</i> APPROVED BY: <i>W.S.</i> DIRECTOR OF PUBLIC WORKS	SHEET <b>1</b> OF <b>3</b>	FILE NO. 2789
W.O. 103 FOR: 61d Gray		DESIGNED BY: P.G.W. DRAWN BY: P.G.W. CHECKED BY:		HORIZ. SCALE: 1" = 50' VERT. SCALE: 1" = 5'	

NOT BUILT



**R.R. CROSSING NOTE:**

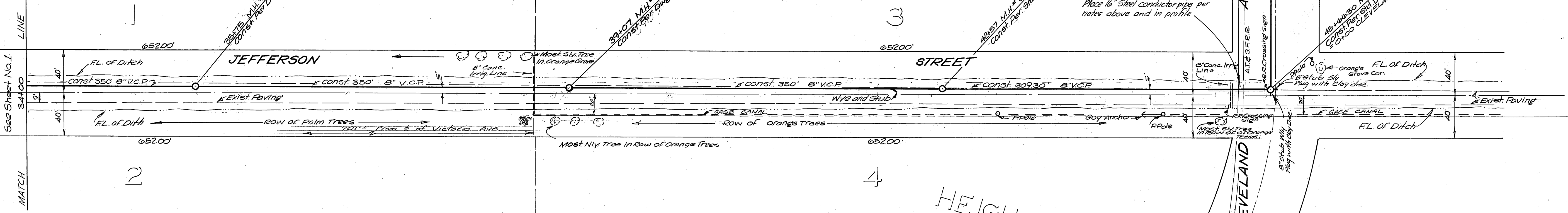
1. Steel conductor pipe may be placed by jacking or by open trench methods. If open trench method is used, placement of the conductor must be completed in one day with the track out of service no more than 8 hours.
2. The contractor is to contact the City Engineering Department for the "Save Harmless Letter" Agreement which is to be submitted by him with his insurance to the A.T.&S.F. R.R. for approval at least two weeks prior to construction.



CROSS SECTION Through 16" o.d. Steel Conductor Pipe No Scale

ARLINGTON

BLK. 52



2

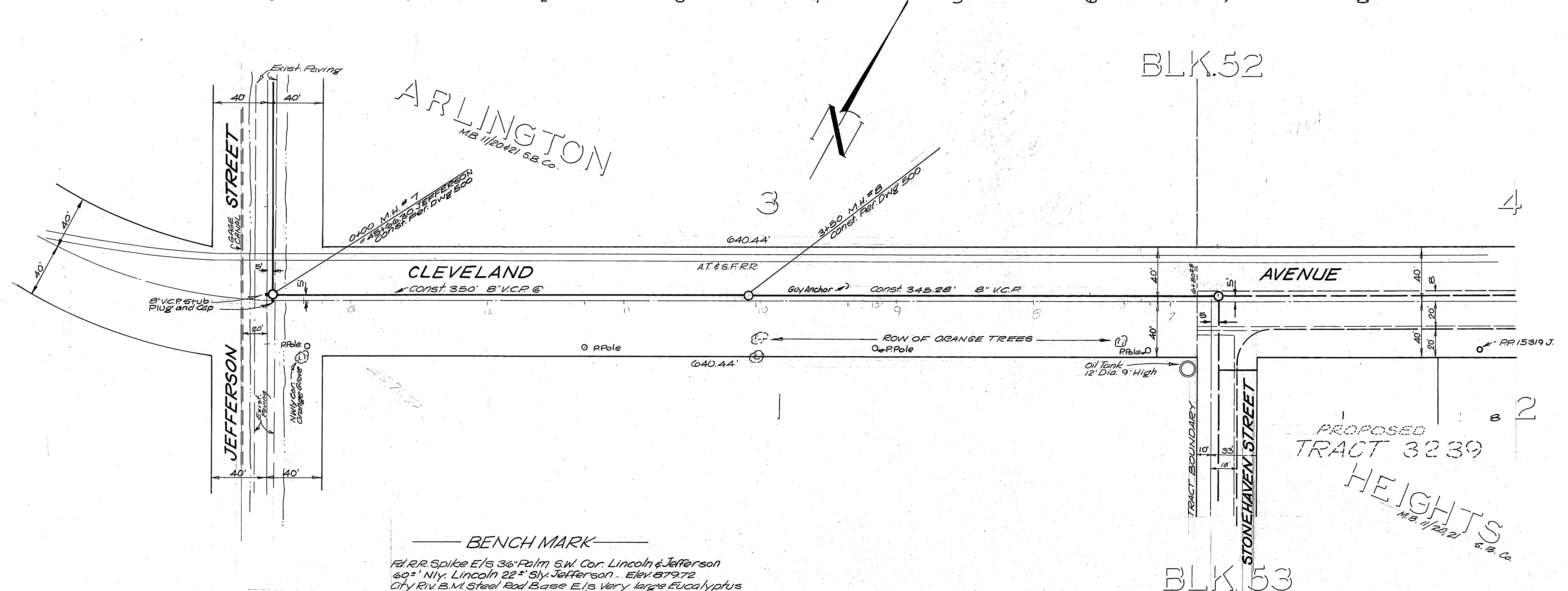
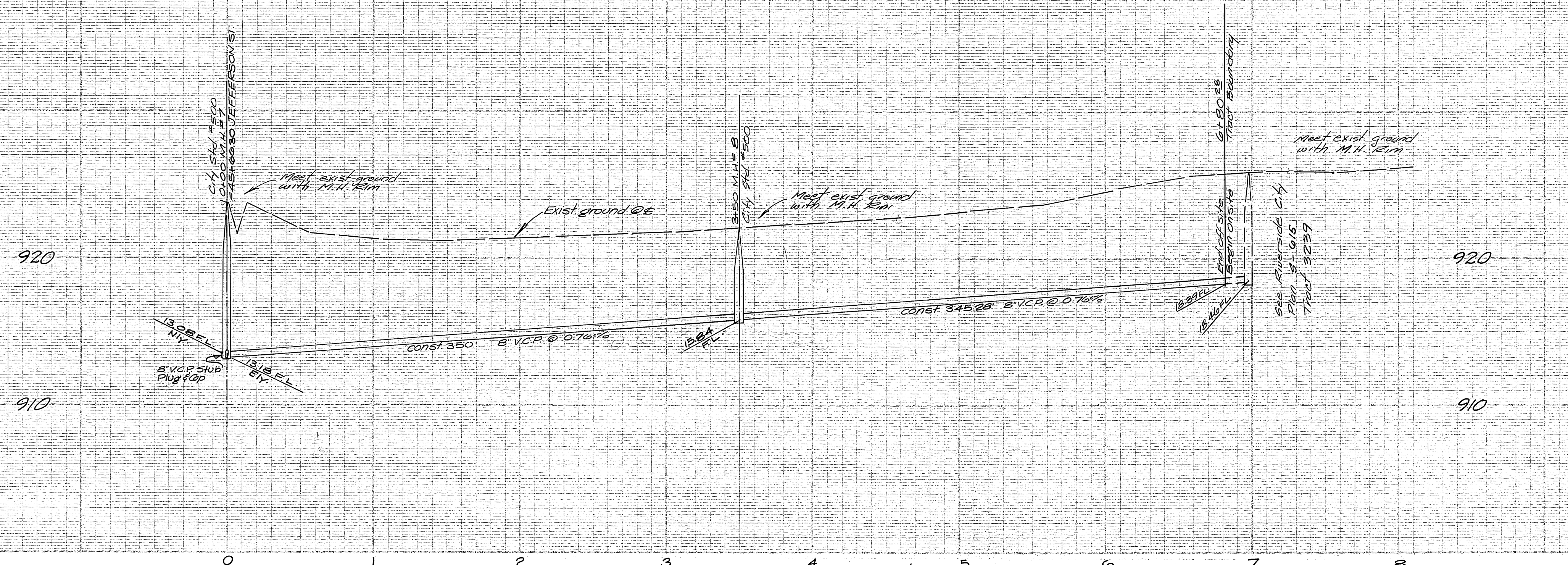
4

HEIGHTS  
M.B. 11/20/21 S.B.C.

NOT BUILT

BENCH MARK BLK 48  
 F.I.R.R. Spike E/s 36' Palm S.W. Cor. Lincoln & Jefferson 60' N/y Lincoln 22' S/y Jefferson  
 Elev. 879.72  
 City Riv. B.M. Steel Rod Base E/s Very Large Eucalyptus N.W. Cor. Victoria & Jefferson, City FB. 680127  
 Elev. 901.89

<b>J. F. DAVIDSON ASSOCIATES</b> CIVIL ENGINEERS - SURVEYORS - PLANNERS RIVERSIDE, CALIFORNIA		<b>CITY OF RIVERSIDE, CALIFORNIA</b> DEPARTMENT OF PUBLIC WORKS		<b>TRACT 3239 SEWER EXT.</b> PLAN & PROFILE JEFFERSON ST. 307' ± S/W OF LINCOLN ST. TO CLEVELAND AVE.		PROJECT NO. <b>S-614</b>
APPROVED BY: <i>[Signature]</i> R.E. No. 13689	DATE: 3-27-65	APPROVED BY: <i>[Signature]</i> DIRECTOR OF PUBLIC WORKS	DATE: 10-1-65	SHEET 2 OF 3		FILE NO. 2789
W.O. 103 FOR Sid Gray		DESIGNED BY: R.W. DRAWN BY: R.W. CHECKED BY:		HORIZ. SCALE: 1" = 50' VERT. SCALE: 1" = 5'		



**BENCH MARK**  
 F.R.R. Spike E/1/3 36' Palm S.W. Cor. Lincoln & Jefferson  
 60" N.Y. Lincoln 22" S/W Jefferson. Elev. 879.72  
 City Riv. B.M. Steel Rod Base E/1/3 Very large Eucalyptus  
 N.W. Cor. Victoria & Jefferson. City F.B. 680-27 Elev. 901.89

**SEWER NOTES**

- 1) Construction shall be in accordance with the City of Riverside, Department of Public Works, Standard Specifications No. 461 and Standard Drawings.
- 2) It shall be the responsibility of the Contractor to clear the right of way in accordance with the provisions of the law as it affects each utility including irrigation lines and appurtenances and at no cost to the City.
- 3) Joints in vitrified clay pipe sewers shall conform to ASTM Standard C-425-60-T, or the latest revision thereof.
- 4) Pipe shall be bedded per Case I, Standard Drawing No. 452, unless otherwise specified on plan.
- 5) Location of wyes and laterals to be determined in the field.
- 6) All stubs and laterals to be constructed in accordance with standard Drawing No. 562. Stubs shall be plugged and capped.

**GAGE CANAL NOTE:**  
 THE GAGE CANAL CO. SHALL BE NOTIFIED 24 HOURS PRIOR TO ANY EXCAVATION. PHONE 683-8228

**NOT BUILT**

<b>J. F. DAVIDSON ASSOCIATES</b> CIVIL ENGINEERS - SURVEYORS - PLANNERS RIVERSIDE, CALIFORNIA APPROVED BY: <i>Robert J. Davidson</i> DATE: 3-27-65 R.E. No. 13639		<b>CITY OF RIVERSIDE, CALIFORNIA</b> DEPARTMENT OF PUBLIC WORKS APPROVED BY: <i>[Signature]</i> DATE: 3-29-65 OFFICE ENGINEER PARK DEPARTMENT TRAFFIC DIVISION ASSISTANT CITY ENG. 302 S. Hans		<b>TRACT 3239 SEWER EXT.</b> <b>PLAN &amp; PROFILE</b> JEFFERSON ST 307'± S/W OF LINCOLN ST TO CLEVELAND AVE. SHEET 3 OF 3 PROJECT NO. S-614 FILE NO. 2189	
W.O. 103 FOR: Sid Gray	F.B. 9/6/47	DESIGNED BY: P.G.W.	DRAWN BY: P.G.W.	CHECKED BY:	HORIZ. SCALE: 1" = 50'