

SEWER NOTES

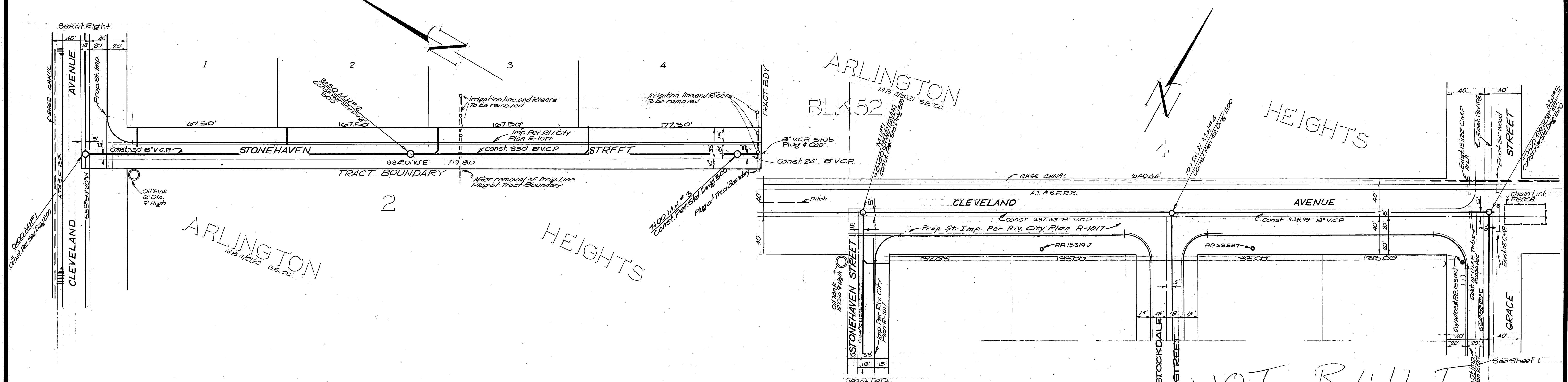
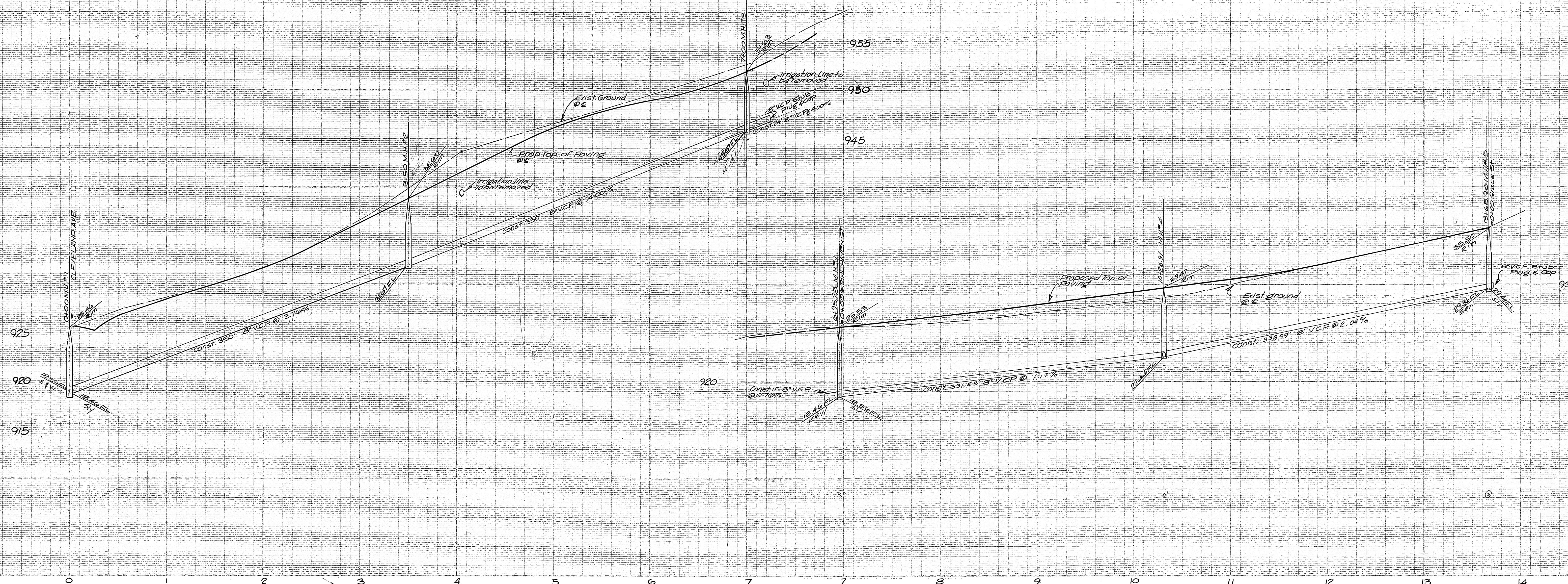
- 1) Construction shall be in accordance with the City of Riverside, Department of Public Works, Standard Specification No. 461 and Std. Drawings.
- 2) It shall be the responsibility of the contractor to clear the right of way in accordance with the provisions of the law as it affects each utility including irrigation lines and appurtenances and at no cost to the City.
- 3) Joints in vitrified clay pipe sewers shall conform to ASTM Standard C-425-60T, or the latest revision thereof.
- 4) Pipe shall be bedded per Case II, Standard Drawing No. 452, unless otherwise specified on plan.
- 5) Location of wyes and laterals to be determined in the field.
- 6) ALL stubs and laterals to be constructed in accordance with standard Drawing No. 562. Stubs shall be plugged and capped.

GAGE CANAL NOTE:
THE GAGE CANAL CO. SHALL BE NOTIFIED 24 HOURS PRIOR TO ANY EXCAVATION. PHONE 683-0228

NOT BUILT

BENCH MARK
City B.M. - RR Spike in PR 15318J at the S.W. Cor. of Grace & Cleveland Streets Elev. 930.88

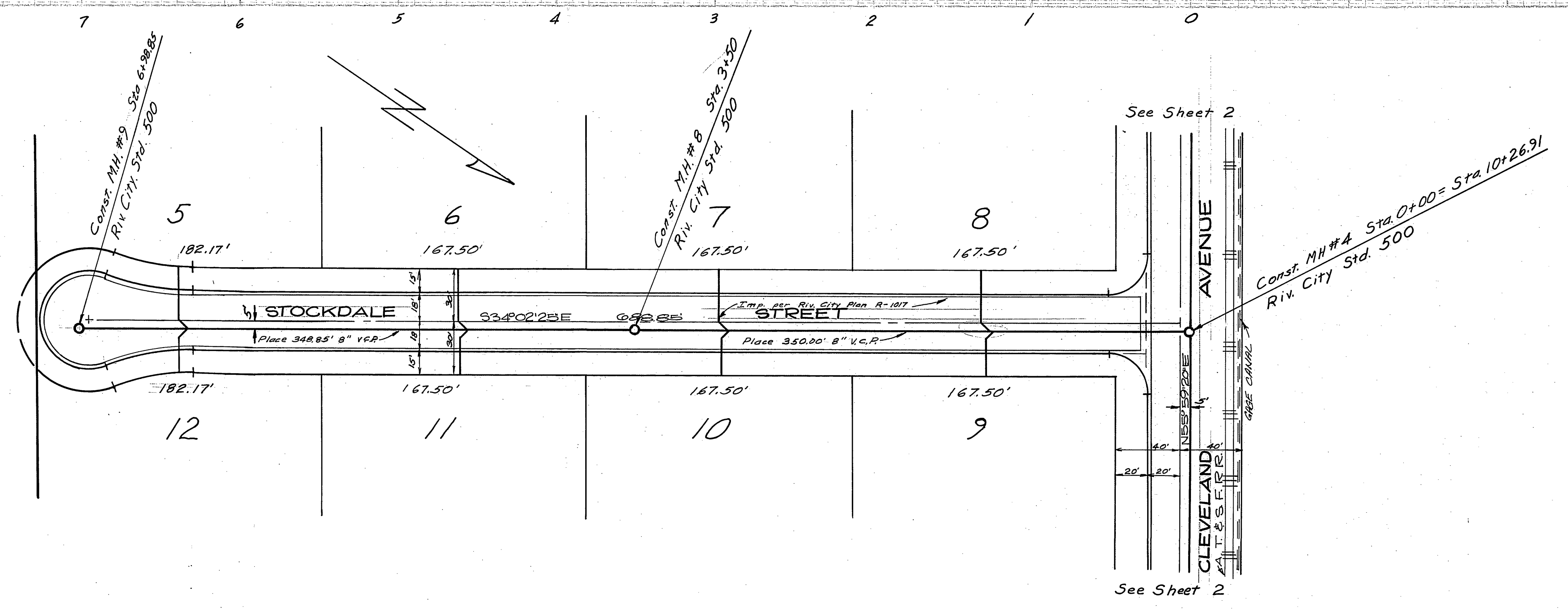
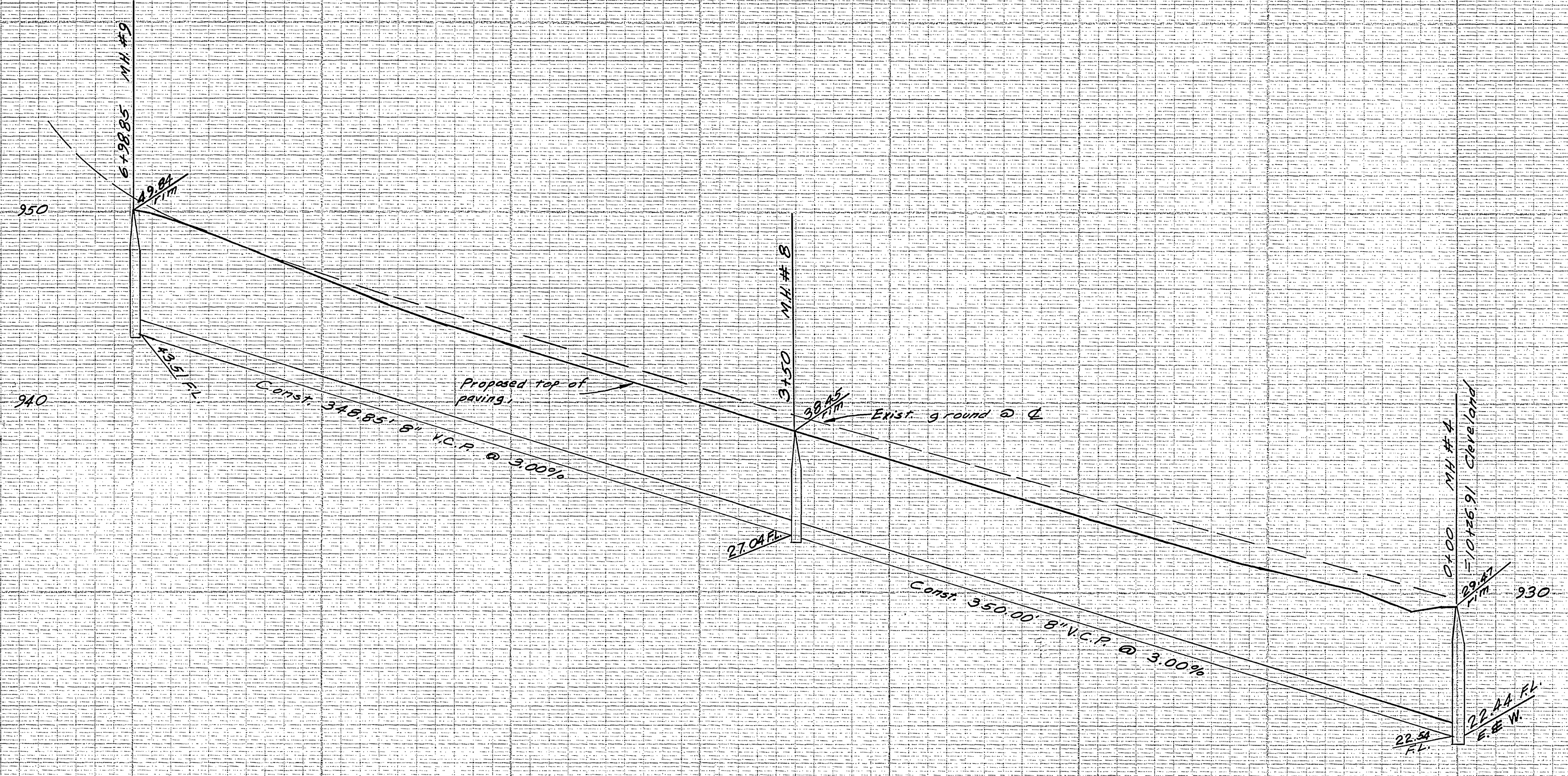
J. F. DAVIDSON ASSOCIATES CIVIL ENGINEERS - SURVEYORS - PLANNERS RIVERSIDE, CALIFORNIA		CITY OF RIVERSIDE, CALIFORNIA DEPARTMENT OF PUBLIC WORKS		PROJECT NO. S-615
APPROVED BY: <i>Robert J. Keegan</i> R.E. No. 12689	DATE: 3-27-65	APPROVED BY: <i>[Signature]</i> OFFICE ENGINEER PARK DEPARTMENT TRAFFIC DIVISION ASSISTANT CITY ENG.	BY: <i>WJG</i> DATE: 7-9	DIRECTOR OF PUBLIC WORKS DATE: 7-12-65
W.G. 301 FOR: <i>Durham & Hawkins</i> F.B. 910-17		DESIGNED BY: <i>PSW</i> DRAWN BY: <i>BSW</i> CHECKED BY: <i>[Signature]</i>		SHEET 1 OF 3 FILE NO. 2789



BENCH MARK
 CITY B.M. - RR. spike in P.P. 15318J at
 the S.W. CO. of Grace & Cleveland Streets
 Elev. 930.88

J. F. DAVIDSON ASSOCIATES CIVIL ENGINEERS - SURVEYORS - PLANNERS RIVERSIDE, CALIFORNIA APPROVED BY: <i>Robert J. Kopp</i> DATE: 3-27-65 R.E. No. 12679		CITY OF RIVERSIDE, CALIFORNIA DEPARTMENT OF PUBLIC WORKS APPROVED BY: <i>[Signature]</i> DATE: 7-9 OFFICE ENGINEER PARK DEPARTMENT TRAFFIC DIVISION ASSISTANT CITY ENG. DATE: 7-12-65		PROJECT NO. S-615 SHEET 2 OF 3 FILE NO. 2789
W.O. 301 FOR: <i>Davidson & Associates</i> F.B. 9/16/17		DESIGNED BY: <i>PSW</i> DRAWN BY: <i>PSW</i> CHECKED BY: <i>Bob B.</i>		HORIZ. SCALE: 1" = 50' VERT. SCALE: 1" = 5'

NOT BUILT



BENCH MARK
 City B.M. - R.R. Spike in P.P. 153181 at
 the S.W. Cor. of Grace & Cleveland
 Streets. Elev. 936.88'

NOT BUILT

J. F. DAVIDSON ASSOCIATES CIVIL ENGINEERS - SURVEYORS - PLANNERS RIVERSIDE, CALIFORNIA APPROVED BY: <i>Robert S. Skippa</i> DATE: 6-8-65 R.E. No. 13630		CITY OF RIVERSIDE, CALIFORNIA DEPARTMENT OF PUBLIC WORKS APPROVED BY: <i>W. J. 7-2</i> OFFICE ENGINEER PARK DEPARTMENT TRAFFIC DIVISION ASSISTANT CITY ENG. <i>Bob S. J.</i> DATE: 7-9		APPROVED BY: <i>Smartland</i> DIRECTOR OF PUBLIC WORKS DATE: 7-12-65		PROJECT NO. S-615 SHEET 3 OF 3
W.O. 501 FOR: Purdon & Hoskins F.B. 916-17		DESIGNED BY: <i>MCA</i> DRAWN BY: <i>MCA</i> CHECKED BY:		HORIZ. SCALE: 1" = 50' VERT. SCALE: 1" = 5'		FILE NO. 2789