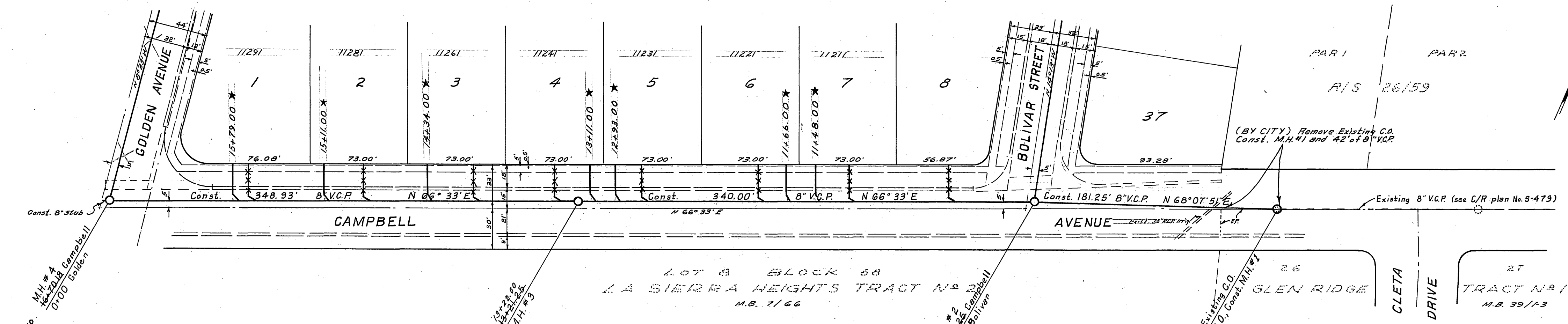


BENCH MARKS:
 1. Elev. 612.85 R.S. in pine tree S.E. Cor. Campbell & Golden.
 2. Elev. 771.226 P.K. in S.W. curb return Campbell & La Sierra.

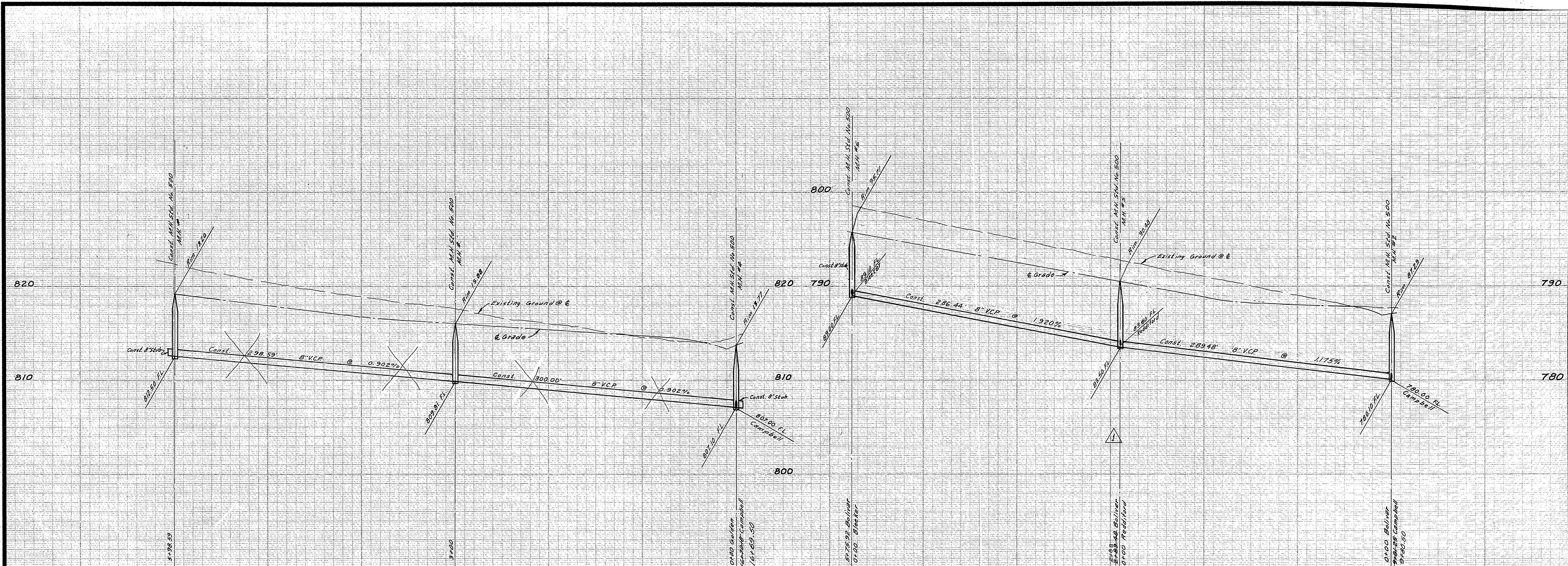


SUBDIVISION QUANTITY ESTIMATE		CITY QUANTITY ESTIMATE	
8" Verified Clay Pipe	2,574 L.F.	8" Verified Clay Pipe	42 L.F.
4" Verified Clay Pipe	1,180 L.F.	Manhole Standard No. 500	1 Ea.
Manhole Standard No. 500	7 Ea.	Pavement Replacement	110 S.F.
Cleanout Standard No. 560	2 Ea.		
8" x 4" Wyes	37 Ea.		

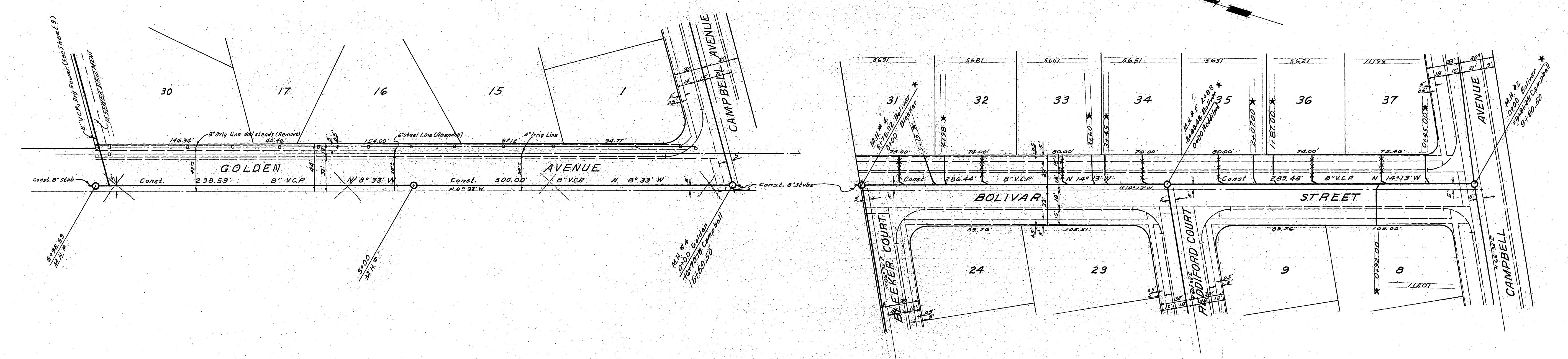
NOTE:
 Prior to construction, Contractor shall contact City Engineer to negotiate contract on City participation.

* AS BUILT 5-31-66 JMW/HLS

ALBERT A. WEBB ASSOCIATES CIVIL ENGINEERS RIVERSIDE, CALIFORNIA APPROVED BY: <i>[Signature]</i> DATE: 3/1/65 R.E. No. 3276	CITY OF RIVERSIDE, CALIFORNIA DEPARTMENT OF PUBLIC WORKS APPROVED BY: <i>[Signature]</i> DATE: 6/10/65 DIRECTOR OF PUBLIC WORKS DATE: 6-10-65	SEWER PLAN & PROFILE TRACT No. 3039 CAMPBELL AVENUE	PROJECT NO.
			S-617
W.O. 64-184 FOR: F.B. 542 DESIGNED BY: BEL DRAWN BY: BEL CHECKED BY: REC		HORIZ. SCALE: 1" = 50' VERT. SCALE: 1" = 5'	SHEET 1 OF 3 FILE NO. 64-184-B

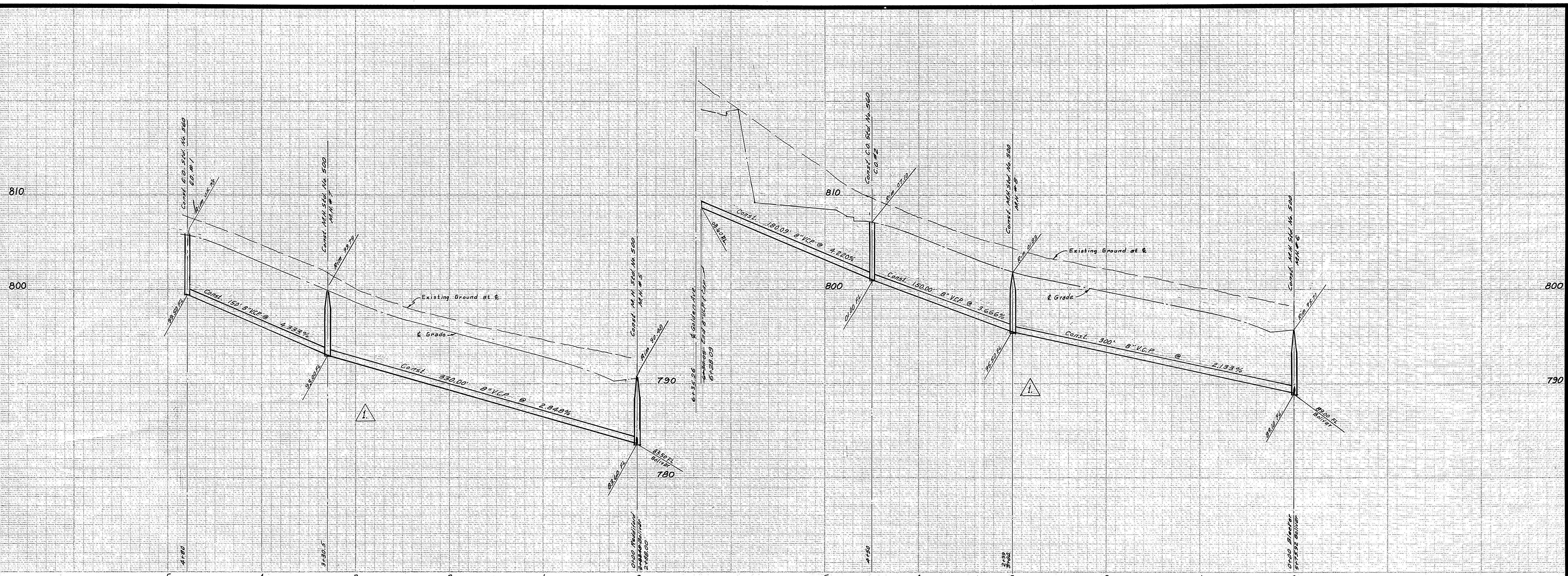


BENCH MARKS:
 0
 1. Elev. 812.85 P. Spike in pine tree S.E. Cor. Campbell & Golden.
 2. Elev. 771.226 P.K. in S.W. curb return Campbell & La Sierra.

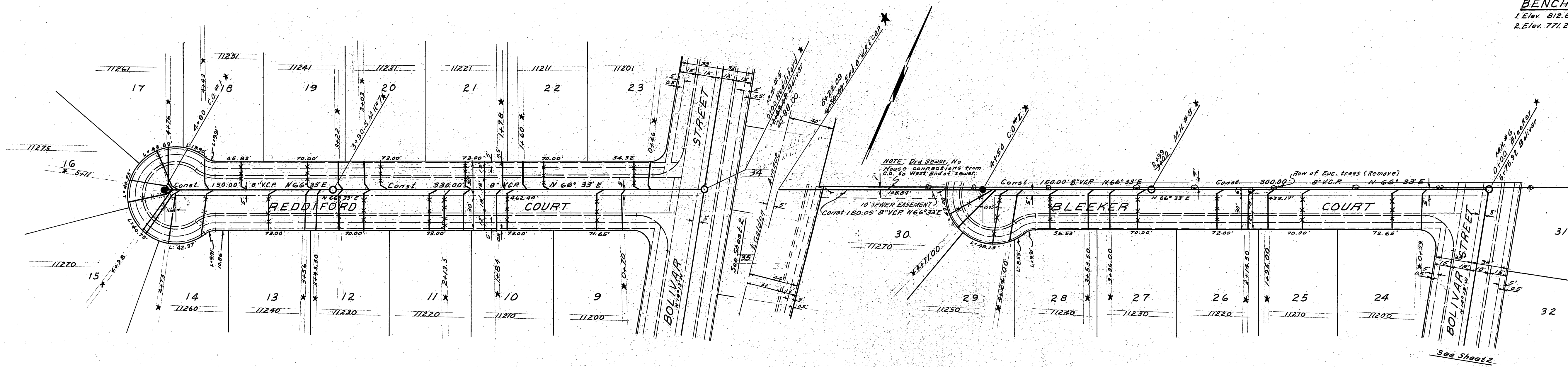


* AS BUILT 5-31-66 *gpc/HB*

ALBERT A. WEBB ASSOCIATES CIVIL ENGINEERS RIVERSIDE, CALIFORNIA APPROVED BY <i>[Signature]</i> DATE 3/1/65 R.E. No. 9876	CITY OF RIVERSIDE, CALIFORNIA DEPARTMENT OF PUBLIC WORKS APPROVED BY <i>[Signature]</i> DATE 6/10 DIRECTOR OF PUBLIC WORKS DATE 6-10-65	SEWER PLAN & PROFILE TRACT No. 3039 BOLIVAR STREET AND GOLDEN AVENUE HORIZ. SCALE: 1" = 50' VERT. SCALE: 1" = 5'	PROJECT NO. S-617
			SHEET 2 OF 3 FILE NO. 64-184-B



BENCH MARKS:
 1. Elev. 812.85 R. Spike in pine tree S.E. on Campbell / Golden
 2. Elev. 771.226 P.K. in S.W. curb return Campbell / La Sierra



★ ALL LATERALS ON RIGHT SIDE OF REDDFORD CT. EXTEND 5' BEYOND PROPERTY LINE. H/S

★ AS BUILT 6-1-66 JWH/HB

ALBERT A. WEBB ASSOCIATES CIVIL ENGINEERS RIVERSIDE, CALIFORNIA APPROVED BY: <i>[Signature]</i> DATE 3/1/65 R.E. No. 2876	DESIGNED BY: BEL DRAWN BY: BEL CHECKED BY: EEC	CITY OF RIVERSIDE, CALIFORNIA DEPARTMENT OF PUBLIC WORKS		SEWER PLAN & PROFILE TRACT No. 3039 BLEEKER COURT AND REDDFORD COURT	PROJECT NO. S-617 SHEET 3 OF 3 FILE NO. 64-184-B
		APPROVED BY: <i>[Signature]</i> DATE 6-10-65 OFFICE ENGINEER PARK DEPARTMENT TRAFFIC DIVISION ASSISTANT CITY ENG. Bob S.	BY DATE 6-10-65		