

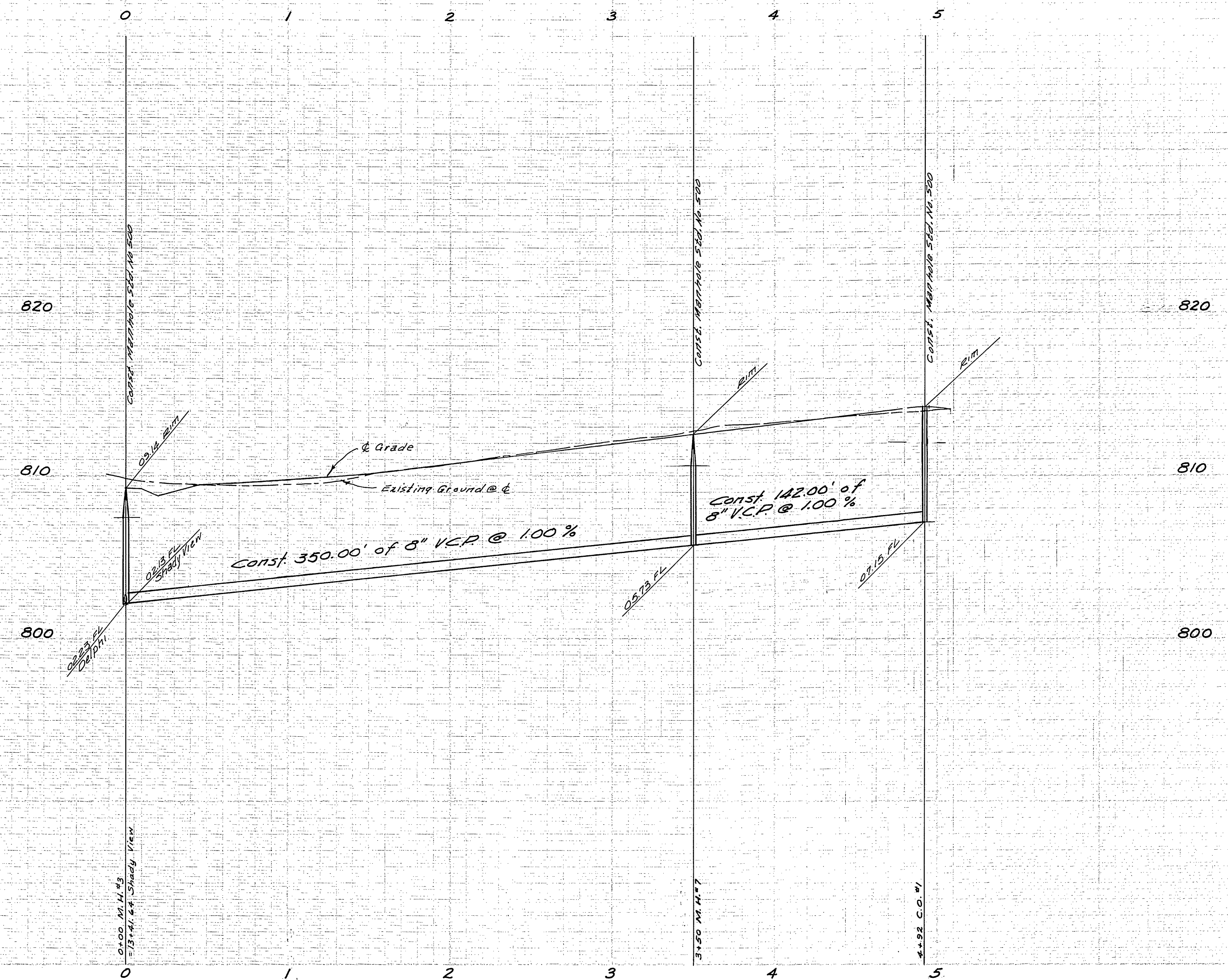
**BENCH MARK**  
Chiseled 2' from West end North curb on  
Glenbrook St. Elev. 806.92.  $\pm$  3/18

- GENERAL NOTES
- Construction shall be in accordance with the City of Riverside, Department of Public Works, Standard Specifications No. 450 and Standard Drawing No. 502.
  - It shall be the responsibility of the contractor to clear the right of way in accordance with the provisions of the law as it affects each utility, to obtain irrigation status and easements and at no cost to the City.
  - Joints in vitrified clay pipe shall be made to A.S.T.M. Standard C-425-60F, or the latest revision thereof.
  - Pipe shall be bedded per Code 11, Standard Specification No. 450, unless otherwise specified on plan.
  - Location of wyes and laterals to be determined by the City.
  - All stubs and laterals to be constructed to meet place with Standard Drawing No. 502. Stubs shall be 12' long and 12" dia.
  - Manhole frames and covers to be set to existing adjacent sidewalks.
  - Laterals are to be 4" and extended to adjacent lots.
  - Prior to construction of sewer, Contractor shall locate existing sewer and contact Engineer for verification of location and depth.

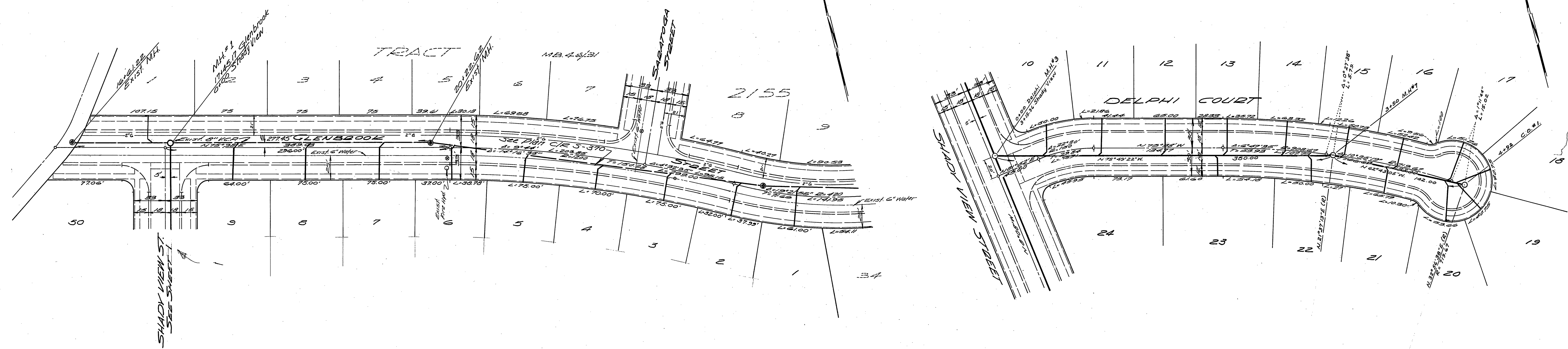
**QUANTITY ESTIMATE**

8" Vitrified Clay Pipe	1602 LF
4" Vitrified Clay Pipe	1710 LF
Manholes - Std. No. 500	2 EA.
Cleanouts - Std. No. 560	1 EA.
8"x4" Wyes	3 EA.
4" Saddles	12 EA.
Removal & Replacement of Paving	420 Sq. Ft.

<b>ALBERT A. WEBB ASSOCIATES</b> CIVIL ENGINEERS RIVERSIDE, CALIFORNIA APPROVED BY <i>[Signature]</i> DATE 3/17/65 R.E. No. 2872 W.O. 24-322 FOR Ernest N. Oldham F.B. 50	DESIGNED BY REC. DRAWN BY ENL. CHECKED BY REC.	<b>CITY OF RIVERSIDE, CALIFORNIA</b> DEPARTMENT OF PUBLIC WORKS		<b>SEWER PLAN &amp; PROFILE</b> <b>SHADY VIEW STREET</b> <b>TRACT No 3151</b>	PROJECT NO. <b>S-619</b> SHEET <b>1</b> OF <b>2</b> FILE NO. 64-322-B
		RELOCATED M.H. #4 & 5 M.H. #4 Relocated to M.H. #4 REVISIONS 481	APPROVED BY <i>[Signature]</i> DATE 6/19/65 ASSISTANT CITY ENG.	APPROVED BY <i>[Signature]</i> OFFICE ENGINEER PARK DEPARTMENT TRAFFIC DIVISION DATE 6/19/65	HORIZ. SCALE: 1" = 50' VERT. SCALE: 1" = 5'



**BENCH MARK**  
 Chiseled 2" from West end North  
 curb on Glenbrook St. ETL 306.32.  
 F.B. 510/18



ALBERT A. WEBB ASSOCIATES CIVIL ENGINEERS RIVERSIDE, CALIFORNIA APPROVED BY <i>Ernest N. O'Leary</i> DATE 3/7/68 R.E. No. 3876	CITY OF RIVERSIDE, CALIFORNIA DEPARTMENT OF PUBLIC WORKS		SEWER PLAN & PROFILE <b>DELPHI COURT          GLENBROOK ST          TRACT N<sup>o</sup> 3151</b>	PROJECT NO. <b>S-619</b> SHEET <b>2</b> OF <b>2</b>
	DESIGNED BY <i>REC</i> DRAWN BY <i>RM</i> CHECKED BY <i>REC</i> W.O. 64329 FOR <i>Ernest N. O'Leary</i> F.B. 510	MARK REVISIONS APPR. DATE	APPROVED BY <i>[Signature]</i> BY DATE OFFICE ENGINEER PARK DEPARTMENT TRAFFIC DIVISION ASSISTANT CITY ENG. <i>187 612</i> DATE <i>6-19-68</i>	HORIZ. SCALE: 1" = 50' VERT. SCALE: 1" = 5'