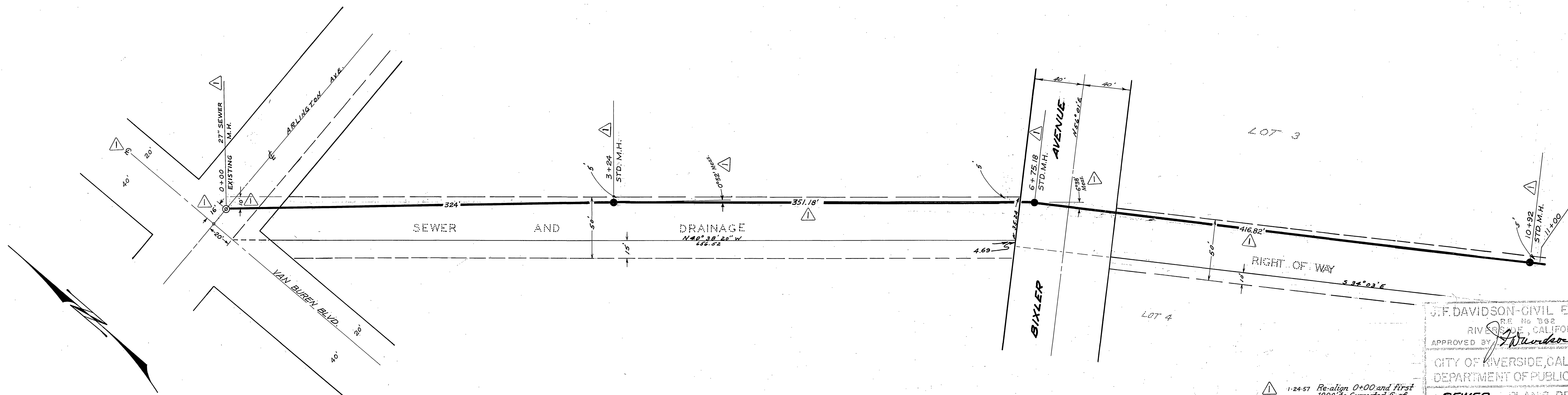


B. M.
N & L IN MIDDLE OF CULVERT
HDWLL S.E. COR INTERS OF
ARLINGTON AVE. & VAN
BUREN BLVD. F.B. 551/31
ELEV 737.43

Note - M.H.'s to be City of Riverside Std. NB M.I.D.
For Typical Section of R/W see sheet NR 2



J.F. DAVIDSON - CIVIL ENGINEER
R.E. No. 382
RIVERSIDE, CALIFORNIA
APPROVED BY *J.F. Davidson* DATE 11-11-56
CITY OF RIVERSIDE, CALIFORNIA
DEPARTMENT OF PUBLIC WORKS
SEWER PLAN & PROFILE
(Between Arlington Ave & Colorado Ave)
VILLA D'ESTE

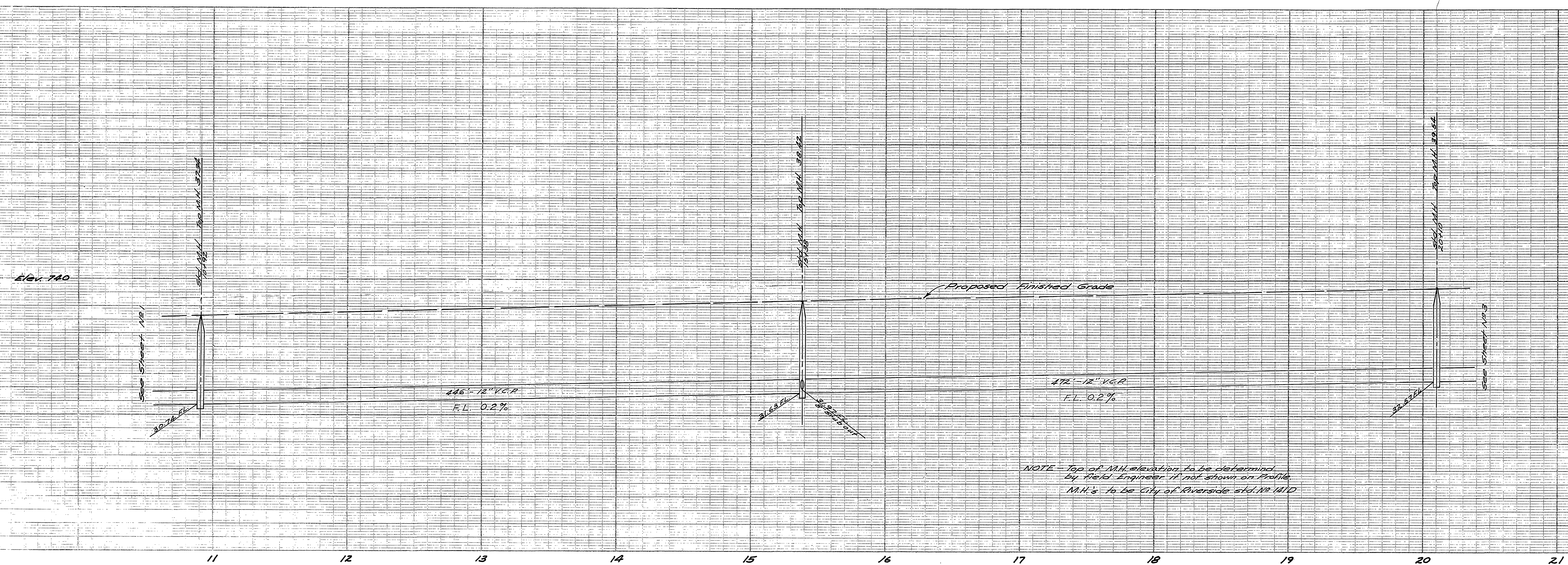
TRUNK SEWER
HORIZ. SCALE 1"=40' VERT. SCALE 1"=4'

APPROVED BY *J. Matthews*
DIRECTOR OF PUBLIC WORKS
DATE Dec 12, 1956
NO. S-62

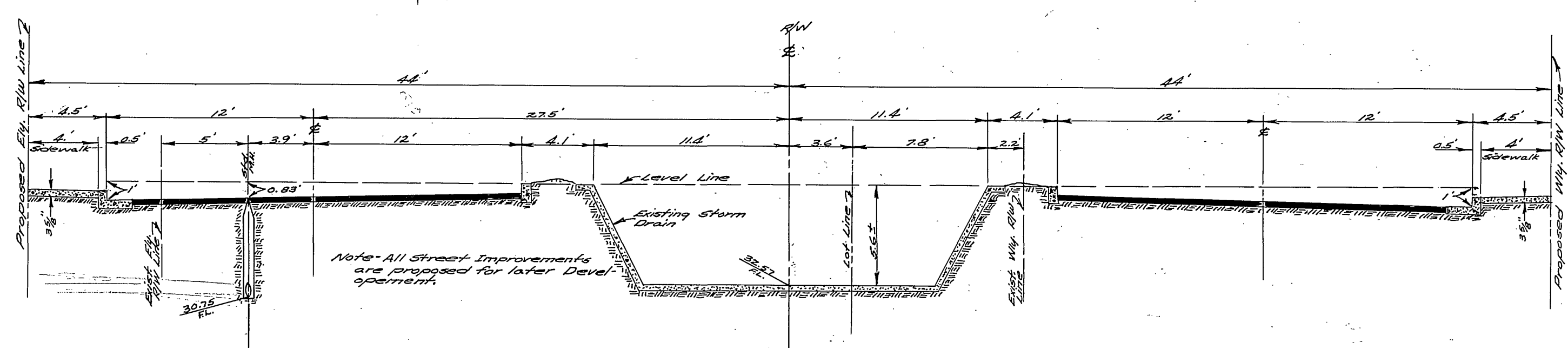
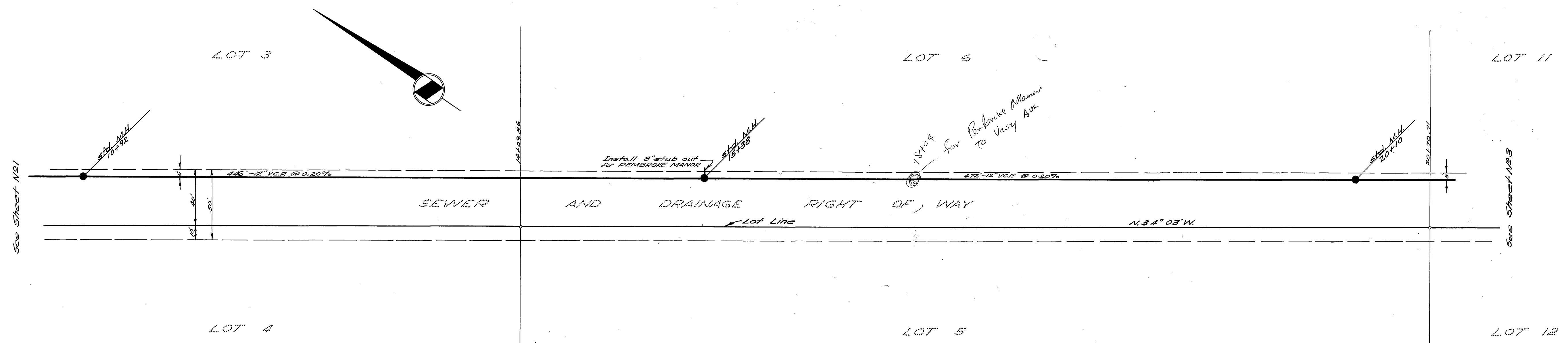
1-24-57 Re-align 0+00 and first 1000' to corrected E. of Van Buren Blvd.

PROPERTY OF
CITY OF RIVERSIDE

Reimb. Contr # 24



NOTE: Top of M.H. elevation to be determined by field engineer if not shown on profile. M.H.'s to be City of Riverside std. No. 141D.

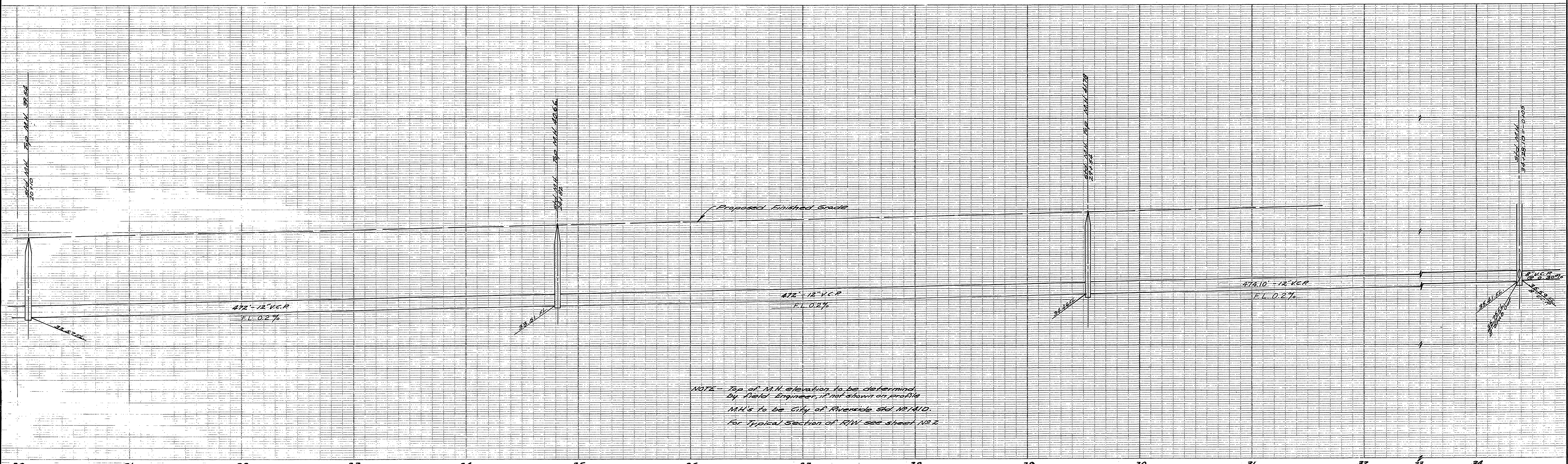


TYPICAL SECTION - MONROE STORM DRAIN R/W BETWEEN COLORADO AVE & BIXLER AVE. - STA. 14+92. Scale 1"=6'-0"

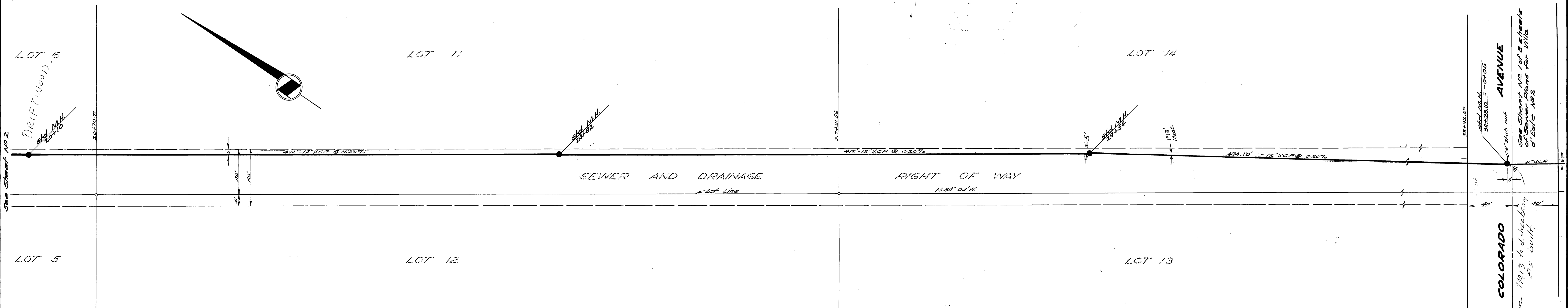
J.F. DAVIDSON - CIVIL ENGINEER
RE. No. 882
RIVERSIDE, CALIFORNIA
APPROVED BY *J.F. Davidson* DATE 11-56
CITY OF RIVERSIDE, CALIFORNIA
DEPARTMENT OF PUBLIC WORKS
SEWER PLAN & PROFILE
(Between Arlington Ave & Colorado Ave)
VILLA D'ESTE

TRUNK SEWER
HORIZ. SCALE 1"=40' VERT. SCALE 1"=4'

APPROVED BY *J.F. Davidson*
DIRECTOR OF PUBLIC WORKS
DATE Dec 13, 1956
NO. S-62
SHEET 2

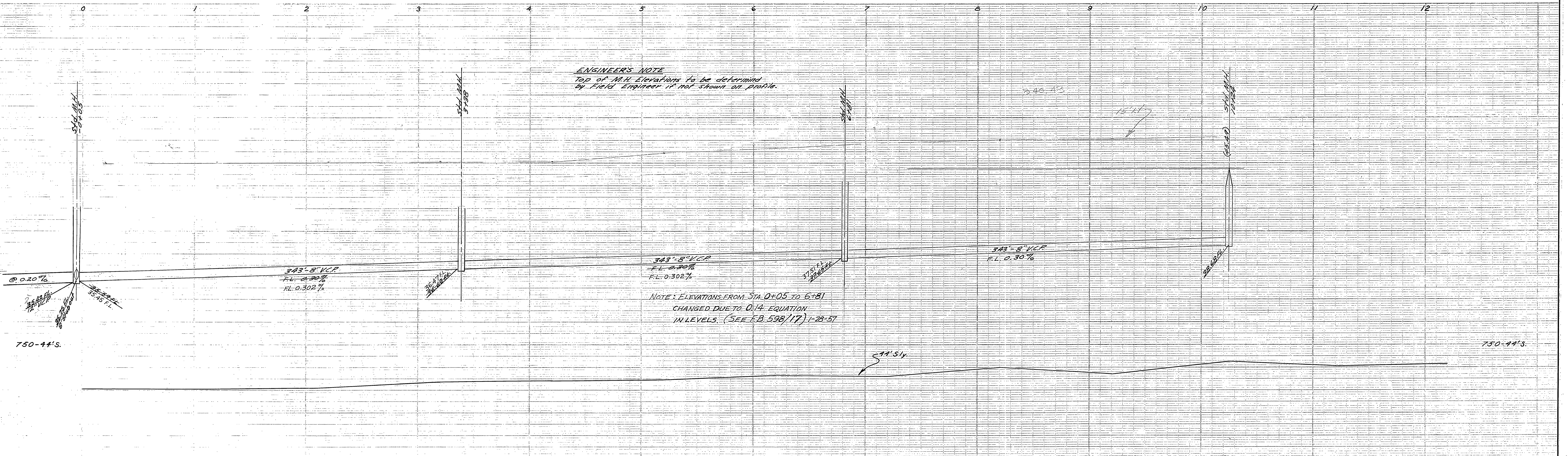


NOTE - Top of M.H. elevation to be determined by field engineer, if not shown on profile
M.H.'s to be City of Riverside Std. No. 1111 D.
For typical section of R.W. see sheet No. 2



J.F. DAVIDSON - CIVIL ENGINEER
R.E. No. 362
RIVERSIDE, CALIFORNIA
APPROVED BY *J.F. Davidson* DATE 11-56
CITY OF RIVERSIDE, CALIFORNIA
DEPARTMENT OF PUBLIC WORKS
SEWER PLAN & PROFILE
(Between Arlington Ave & Colorado Ave)
VILLA D'ESTE
TRUNK SEWER
HORIZ. SCALE 1" = 40' VERT. SCALE 1" = 4'
APPROVED BY *Davidson* NO. S-62
DATE Dec 13, 1956 SHEET 3 OF 4

AVENUE
 50'-0" out
 34'-2 1/2" in
 34'-2 1/2" in
 50'-0" out
 See Sheet No. 1 of 8 sheets
 of Sewer Plans for Villa
 D'Este No. 2
 1953 to 2. Use 604
 4.5 built



ENGINEER'S NOTE
Top of M.H. Elevations to be determined
by Field Engineer if not shown on profile.

343'-8" V.C.P.
F.L. 0.30%
F.L. 0.302%

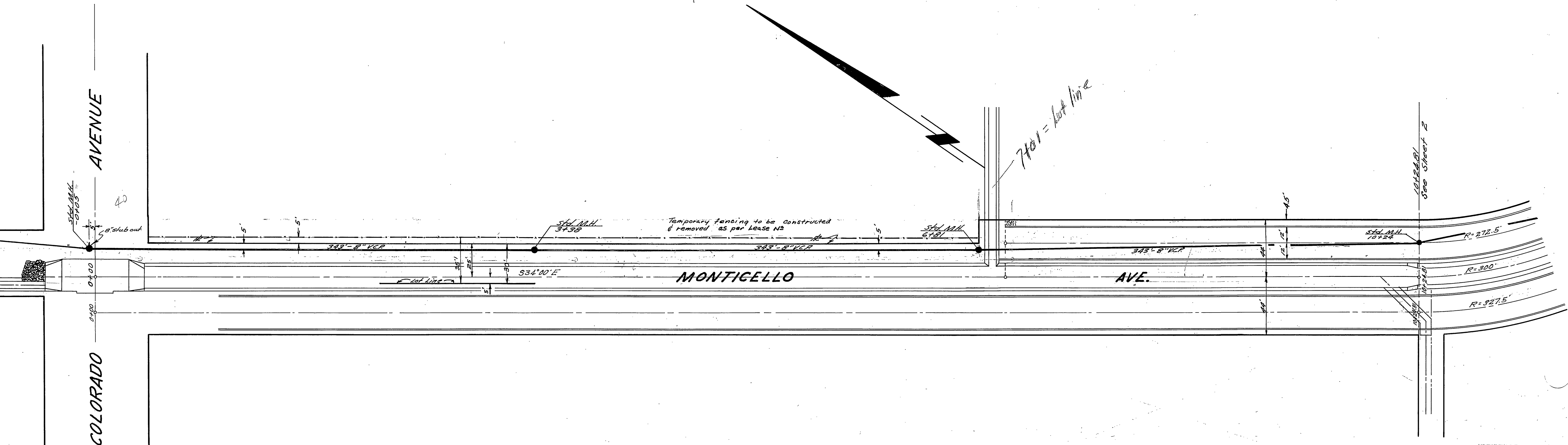
NOTE: ELEVATIONS FROM STA. 0+05 TO 6+81
CHANGED DUE TO 0.14 EQUATION
IN LEVELS. (SEE F.B. 598/17) 1-28-57

343'-8" V.C.P.
F.L. 0.30%

343'-8" V.C.P.
F.L. 0.30%

BENCH MARKS

City B.M. - Pk. spike & lead in Sky end of Wly H.W. at Monroe St. & California Ave.	Elev. 759.23
City B.M. - R.R. spike in RR #402070H NWly Cor. Colorado Ave. & Jackson St.	Elev. 750.32
T.B.M. - Wly end of Ely H.W. at Sta. 0+02	Elev. 747.97



DAVIDSON-CIVIL ENGINEER
RIVERSIDE, CALIFORNIA
APPROVED BY: *Jim Davidson* 3/4/56
CITY OF RIVERSIDE, CALIFORNIA
DEPARTMENT OF PUBLIC WORKS
SEWER PLANS & PROFILE
VILLA D'ESTE
TRUNK SEWER
SCALE: 1"=40'