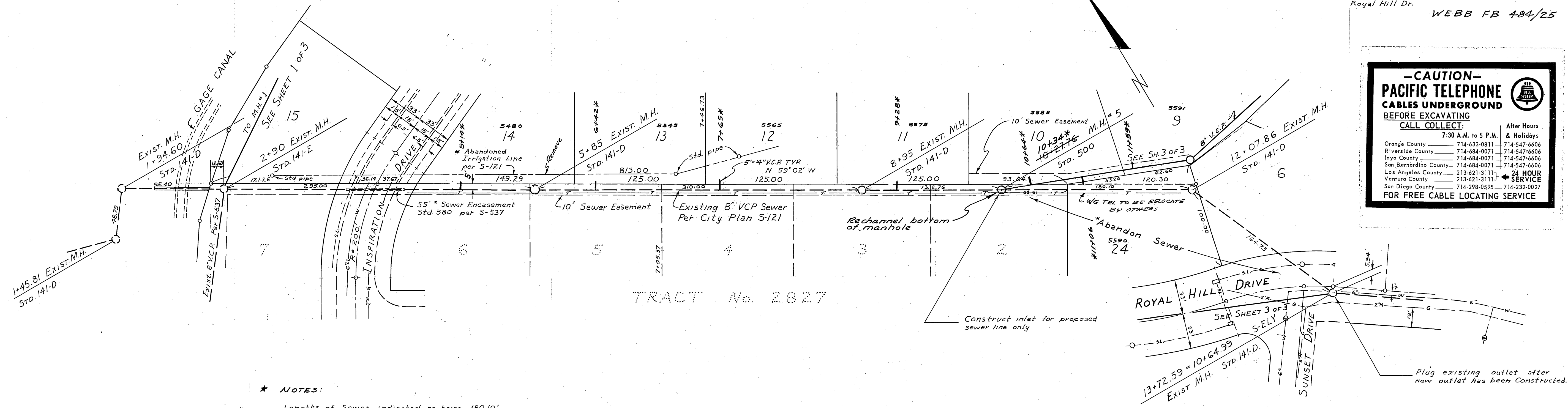


BENCH MARK ELEV. 1051.25
 Chiseled X on S.W. cor. of base of street
 light on North side of Shadow Hill Dr. at
 Royal Hill Dr.
 WEBB FB 484/25



-CAUTION-
PACIFIC TELEPHONE
CABLES UNDERGROUND
 BEFORE EXCAVATING
 CALL COLLECT:

Orange County	714-633-0811	714-547-6606
Riverside County	714-684-0071	714-547-6606
Inyo County	714-684-0071	714-547-6606
San Bernardino County	714-684-0071	714-547-6606
Los Angeles County	213-621-3111	24 HOUR SERVICE
Ventura County	213-621-3111	24 HOUR SERVICE
San Diego County	714-298-0595	714-233-0027

FOR FREE CABLE LOCATING SERVICE

*** NOTES:**

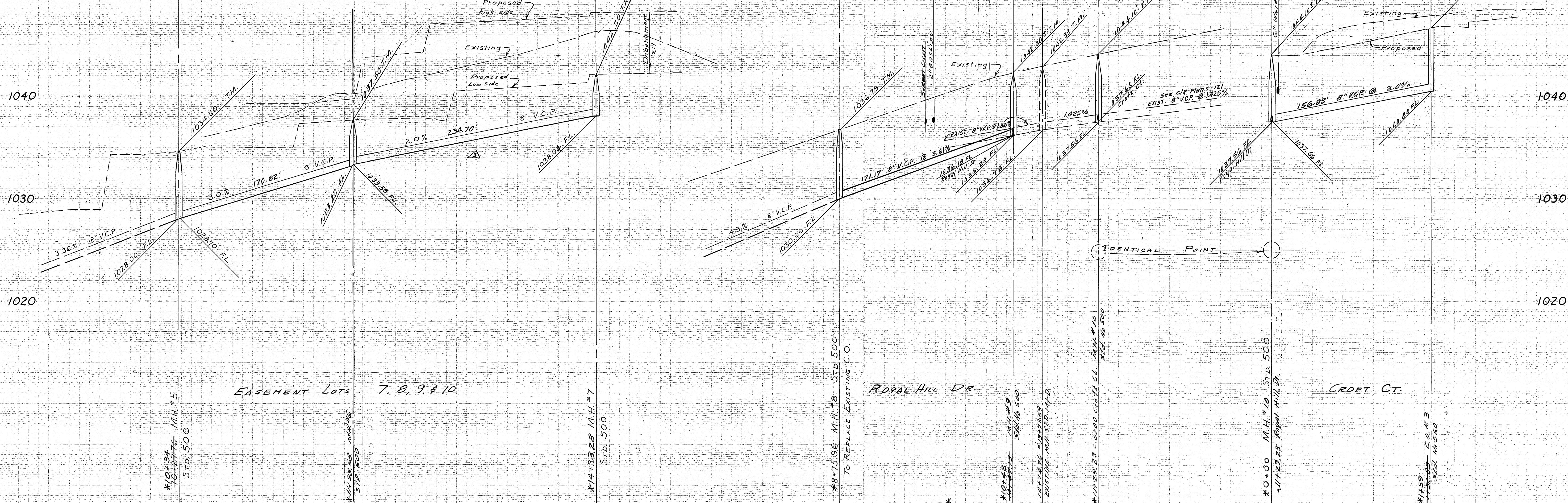
Lengths of Sewer indicated as being 180.10' and 164.73' shall be plugged or crushed in place between Manholes as directed by the Engineer.

The Existing Manhole at Sta. 12+07.86 shall be removed to a depth of not less than 4 ft. and back-filled as directed by the Engineer.

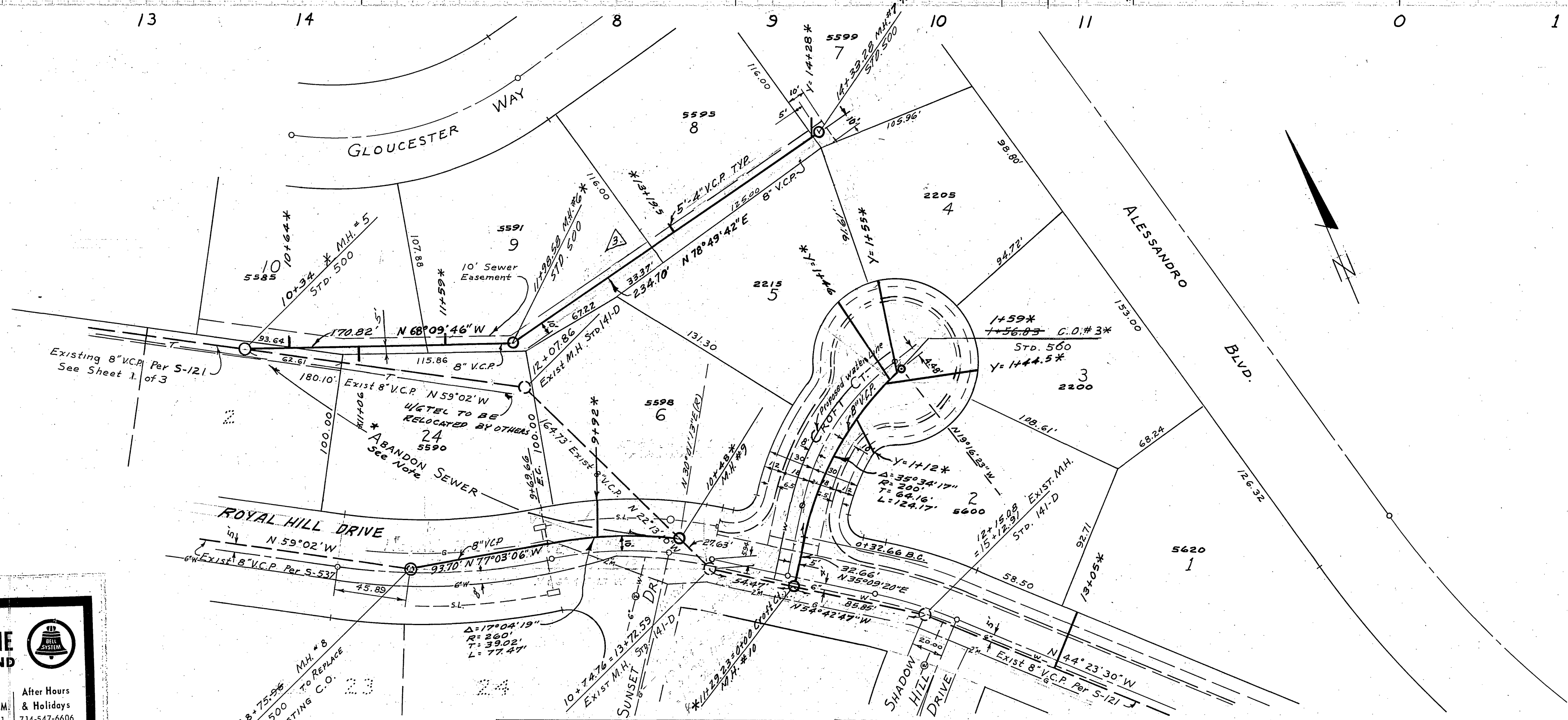
The abandoned irrigation line and stand pipes shall be removed.

ALBERT A. WEBB ASSOCIATES CIVIL ENGINEERS RIVERSIDE, CALIFORNIA APPROVED BY: <i>[Signature]</i> DATE: 4/9/68 R.E. No. 9876		CITY OF RIVERSIDE, CALIFORNIA DEPARTMENT OF PUBLIC WORKS APPROVED BY: <i>[Signature]</i> DIRECTOR OF PUBLIC WORKS DATE: 5-14-68		PROJECT NO. S-622 SHEET 2 OF 3
W.O. 66-410 FOR:		DESIGNED BY: <i>[Signature]</i> DRAWN BY: <i>[Signature]</i> CHECKED BY: <i>[Signature]</i>		HORIZ. SCALE: 1" = 50' VERT. SCALE: 1" = 5' FILE NO. 67-412-B

1050 1040 1030 1020



10 11 12 13 14 8 9 10 11 0 1 2



BENCH MARK Elev. 1051.25
 Chiseled X on S.W. cor. of base of street
 light on North side of Shadow Hill Dr. at
 Royal Hill Dr.
 WEBB FB 484/25

-CAUTION-
PACIFIC TELEPHONE
CABLES UNDERGROUND
 BEFORE EXCAVATING
 CALL COLLECT:
 7:30 A.M. to 5 P.M.
 After Hours & Holidays

Orange County	714-633-0811	714-547-6606
Riverside County	714-684-0071	714-547-6606
Inyo County	714-684-0071	714-547-6606
San Bernardino County	714-684-0071	714-547-6606
Los Angeles County	213-621-3111	24 HOUR SERVICE
Ventura County	213-621-3111	24 HOUR SERVICE
San Diego County	714-298-0595	714-232-0027

FOR FREE CABLE LOCATING SERVICE

* See Sheet 2 of 3 for note on the
 destruction of Abandoned Sewer.
 * AS BUILT 8-13-68 KCS

ALBERT A. WEBB ASSOCIATES
 CIVIL ENGINEERS
 RIVERSIDE, CALIFORNIA

APPROVED BY: *Albert A. Webb* DATE 4/9/65
 R.E. No. 2876

DESIGNED BY	RFT	DATE	7/15/60
DRAWN BY	RFT	DATE	7/15/60
CHECKED BY	AW	DATE	4-2-68
REVISIONS			
APPR.		DATE	
ASSISTANT CITY ENG.		DATE	5/14/65

CITY OF RIVERSIDE, CALIFORNIA
 DEPARTMENT OF PUBLIC WORKS

APPROVED BY: *Amal* DATE 5-14-65
 DIRECTOR OF PUBLIC WORKS

SEWER PLAN & PROFILE
 EASEMENT-LOTS 7, 8, 9, & 10
 ROYAL HILL DR. & CROFT CT.
 TRACT No. 3737

PROJECT NO.
S-622
 SHEET 3 OF 3
 FILE NO. 67-412-B