

**GENERAL NOTES:**

ALL CONSTRUCTION SHALL BE IN ACCORDANCE WITH STANDARDS AND SPECIFICATIONS NO. 401 OF THE CITY OF RIVERSIDE DEPARTMENT OF PUBLIC WORKS. PIPE SHALL BE BEDDED PER CASE 3, STANDARD DRAWING NO. 482.

IT SHALL BE THE RESPONSIBILITY OF THE CONTRACTOR TO CLEAR THE RIGHT-OF-WAY IN ACCORDANCE WITH THE PROVISIONS OF LAW AS IT AFFECTS EACH UTILITY INCLUDING IRRIGATION LINES AND APPURTENANCES, AND AT NO EXTRA COST TO THE CITY.

JOINTS IN VITRIFIED CLAY PIPE SEWERS SHALL CONFORM TO A.S.T.M. STANDARD C-425-60T, OR THE LATEST REVISION THEREOF.

ALL LATERALS TO BE CONSTRUCTED IN ACCORDANCE WITH STANDARD DRAWING NO. 592.

ALL LATERALS TO BE 4" AND EXTENDED TO THE PROPERTY LINE. ALL WYES AND LATERALS TO BE LOCATED IN THE FIELD.

**BENCH MARK**  
 4" IRON PIPE CONCRETE FILLED, NAIL IN CENTER, AT SOUTHWEST CORNER SECTION 31, T.26, R.4, W. 22, S. 1/4, ELEV. 1139.41

CITY OF RIVERSIDE - WATER DIVISION  
 Approved by *Howard L. Cream*  
 General Supt./Chief Engineer

**J.F. DAVIDSON ASSOCIATES**  
 CIVIL ENGINEERS-SURVEYORS-PLANNERS  
 RIVERSIDE, CALIFORNIA  
 APPROVED BY *George M. Ladd* DATE: 4-22-65  
 R.E. NO. 10698

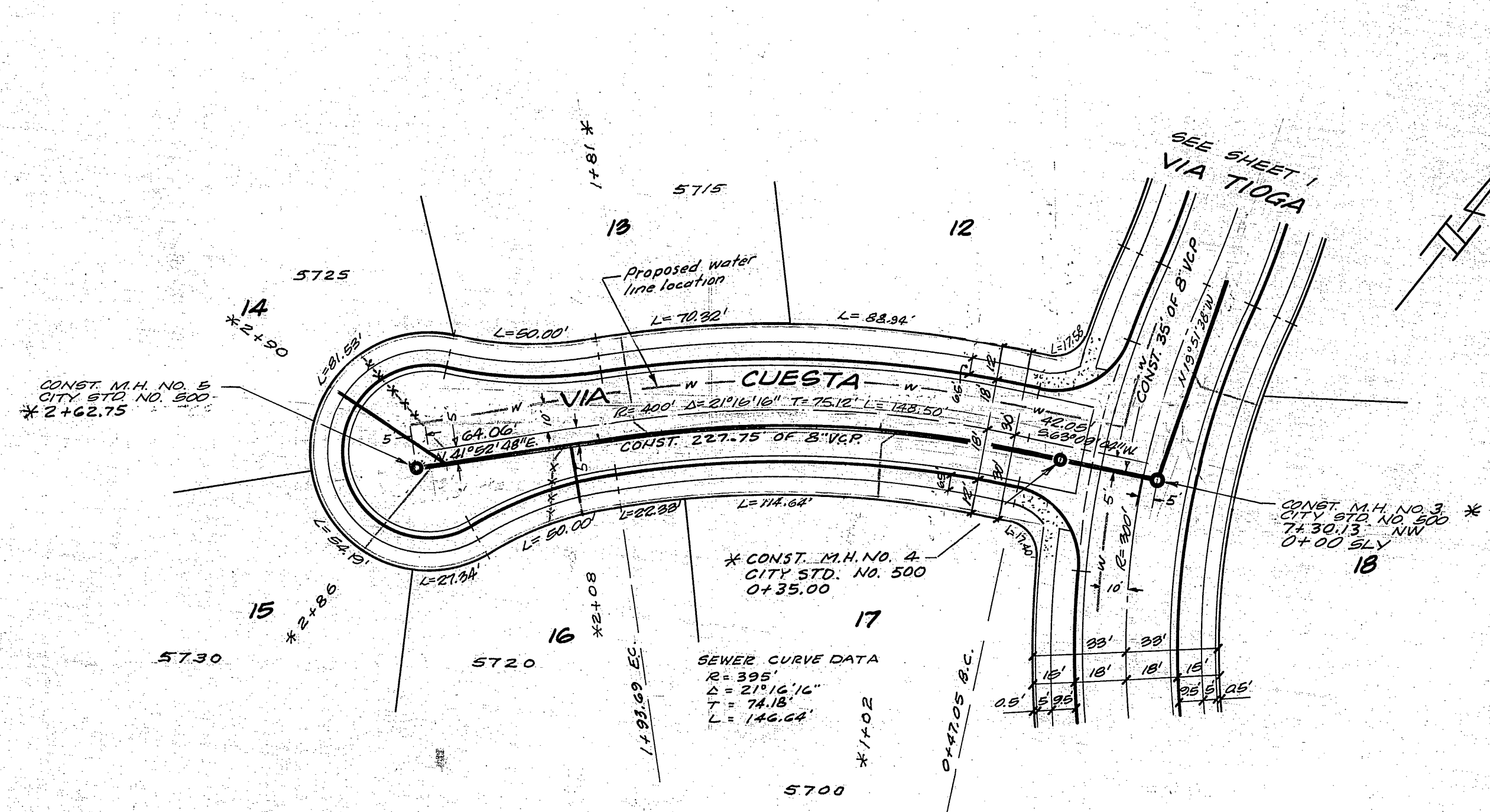
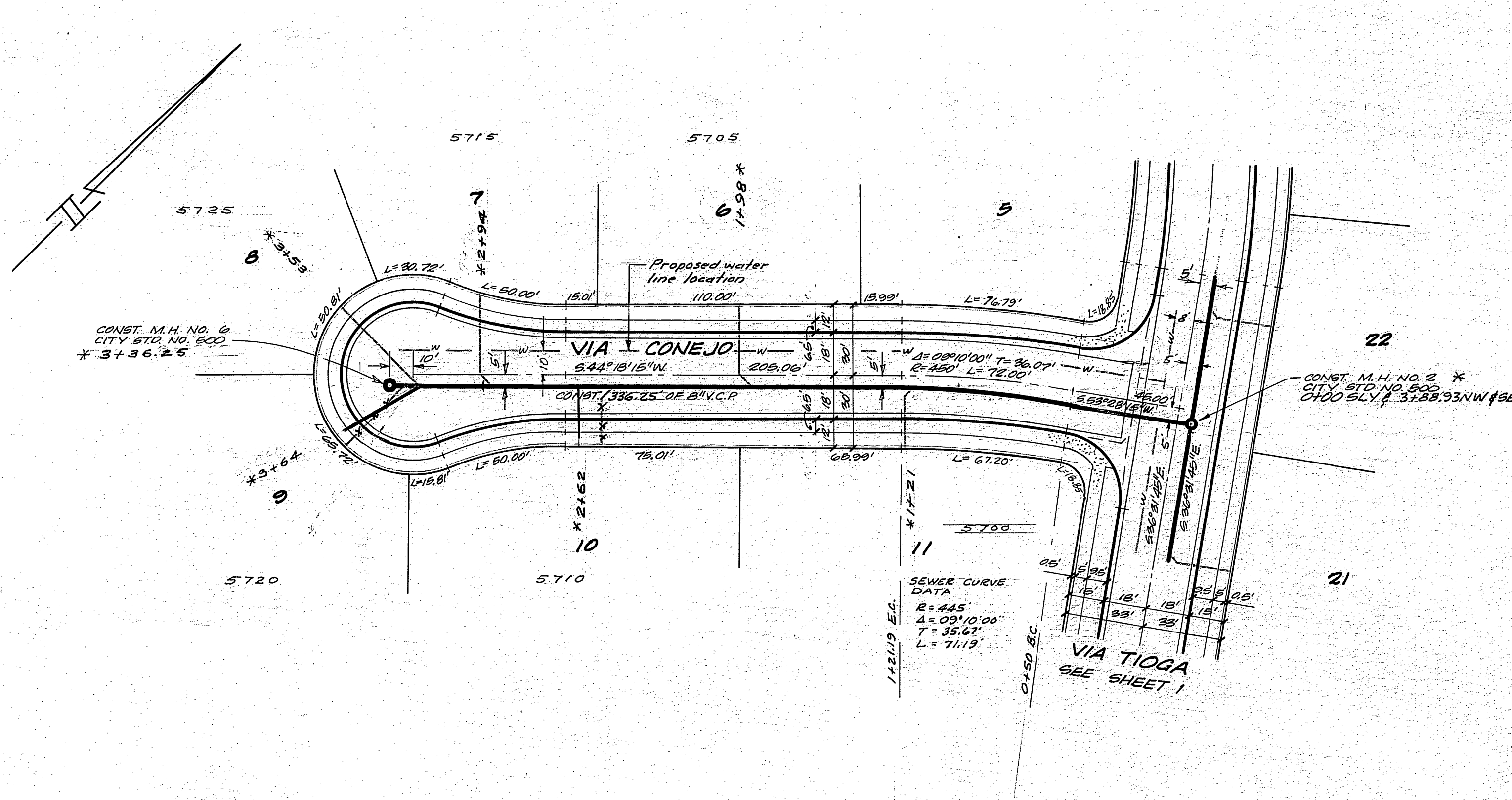
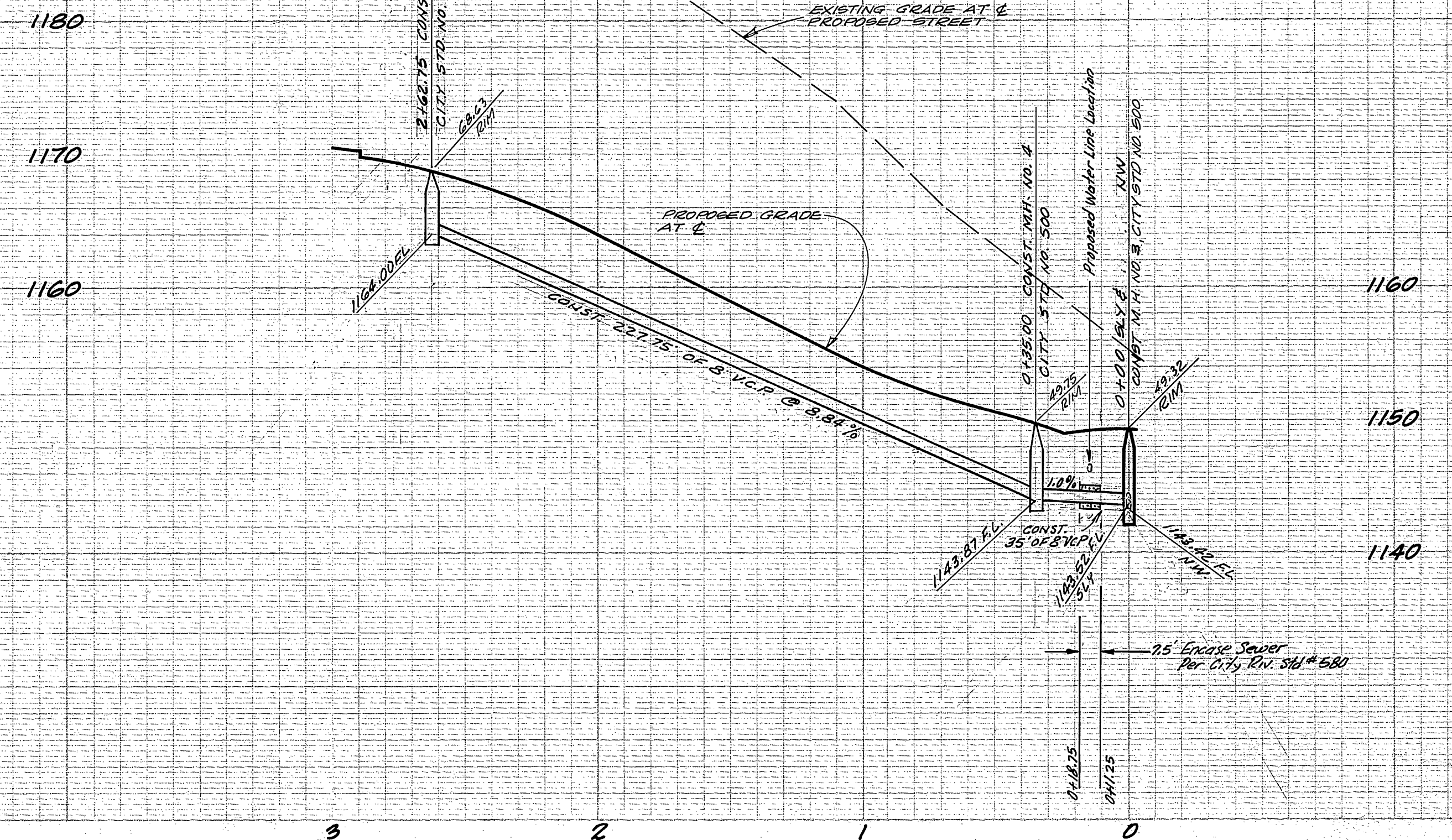
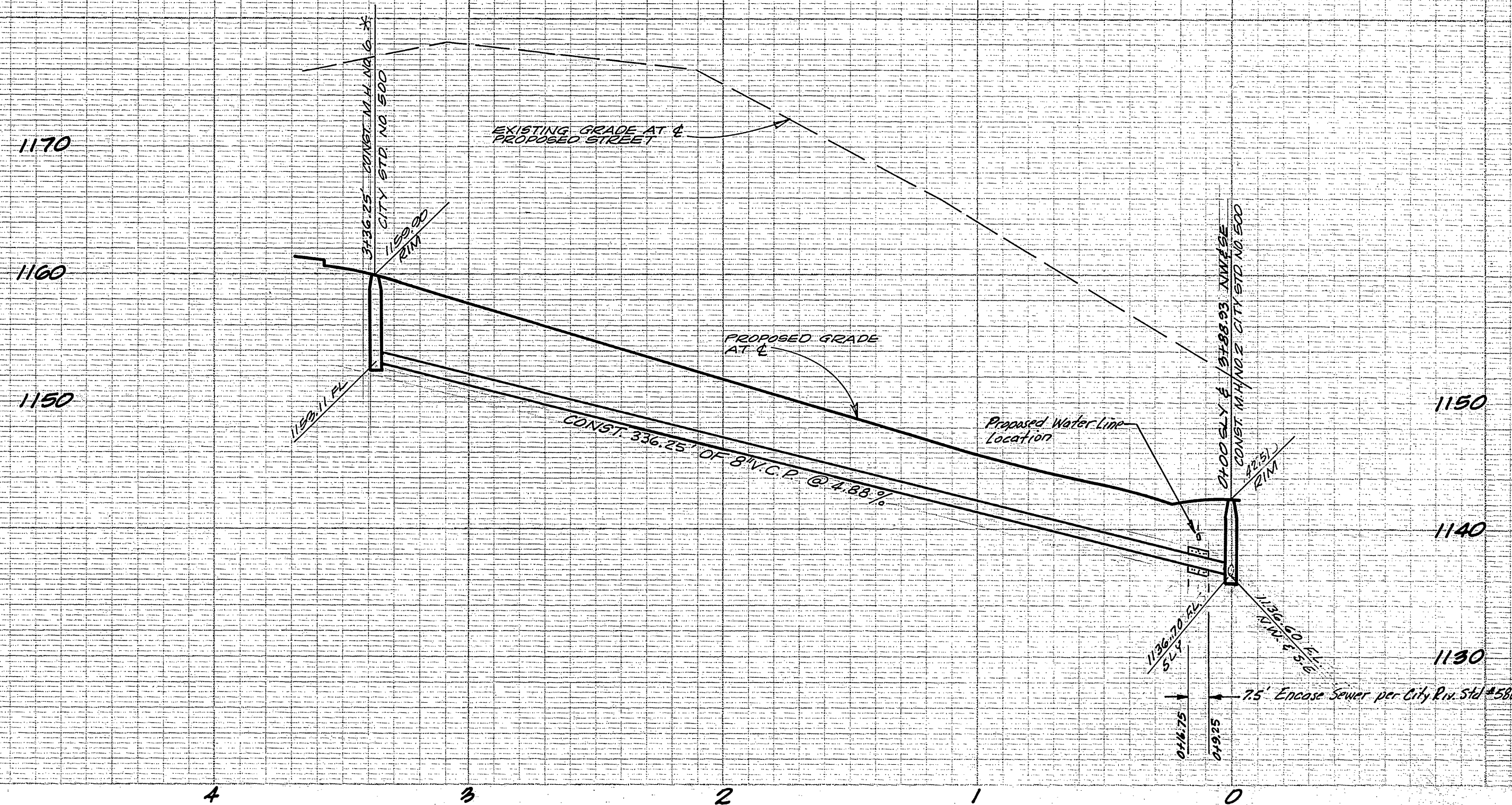
NO.	REVISIONS	APPR.	DATE
1	Change of Tract Number (from Tr. 3272)		3/27/67

**CITY OF RIVERSIDE, CALIFORNIA**  
 DEPARTMENT OF PUBLIC WORKS  
 APPROVED BY *W. J. ...* DATE: 7-2  
 OFFICE ENGINEER  
 PARK DEPARTMENT  
 TRAFFIC DIVISION  
 ASSISTANT CITY ENG. *W. J. ...* DATE: 6-19-67

**TRACT 3647**  
 SEWER PLAN & PROFILE  
 VIA TIOGA

PROJECT NO.  
**5-624**  
 SHEET **1** OF **2**  
 FILE NO. **2788**

HORIZ. SCALE: 1" = 40' VERT. SCALE: 1" = 8'



\*AS BUILT 7-14-67 K-3E

BENCH MARK

4" IRON PIPE CONCRETE FILLED NAIL IN CENTER AT SOUTHWEST CORNER SEC 31, T2S, R2W, S.B.B.M. - ELEV. 1186.21

CITY OF RIVERSIDE - WATER DIVISION  
 Approved by *Howard J. ...*  
 General Supt./Chief Engineer

<b>J. F. DAVIDSON ASSOCIATES</b> CIVIL ENGINEERS - SURVEYORS - PLANNERS RIVERSIDE, CALIFORNIA APPROVED BY: <i>Charles E. ...</i> DATE: 3/22/67 R.E. NO. 10688	REVISIONS 1. Change of Tract Number (from 7327) 3/22/67 2. <i>...</i> 3. <i>...</i>	<b>CITY OF RIVERSIDE, CALIFORNIA</b> DEPARTMENT OF PUBLIC WORKS		<b>TRACT 3647</b> SEWER PLAN & PROFILE VIA CONEJO VIA CUESTA	PROJECT NO. <b>S-624</b> SHEET <b>2</b> OF <b>2</b> FILE NO. <b>2788</b>
		DESIGNED BY: <i>KEITH</i> DRAWN BY: <i>KEITH</i> CHECKED BY: <i>...</i>	APPROVED BY: <i>...</i> OFFICE ENGINEER PARK DEPARTMENT TRAFFIC DIVISION ASSISTANT CITY ENG.		