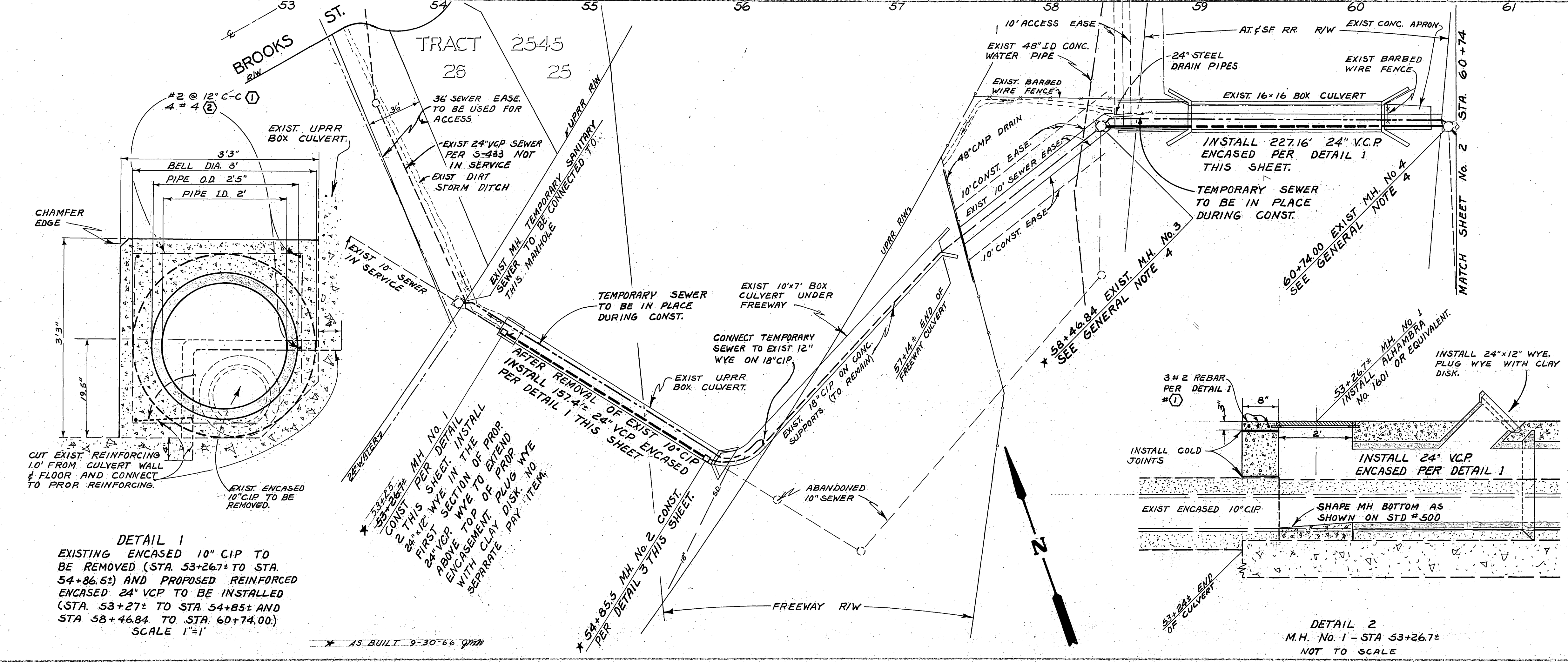
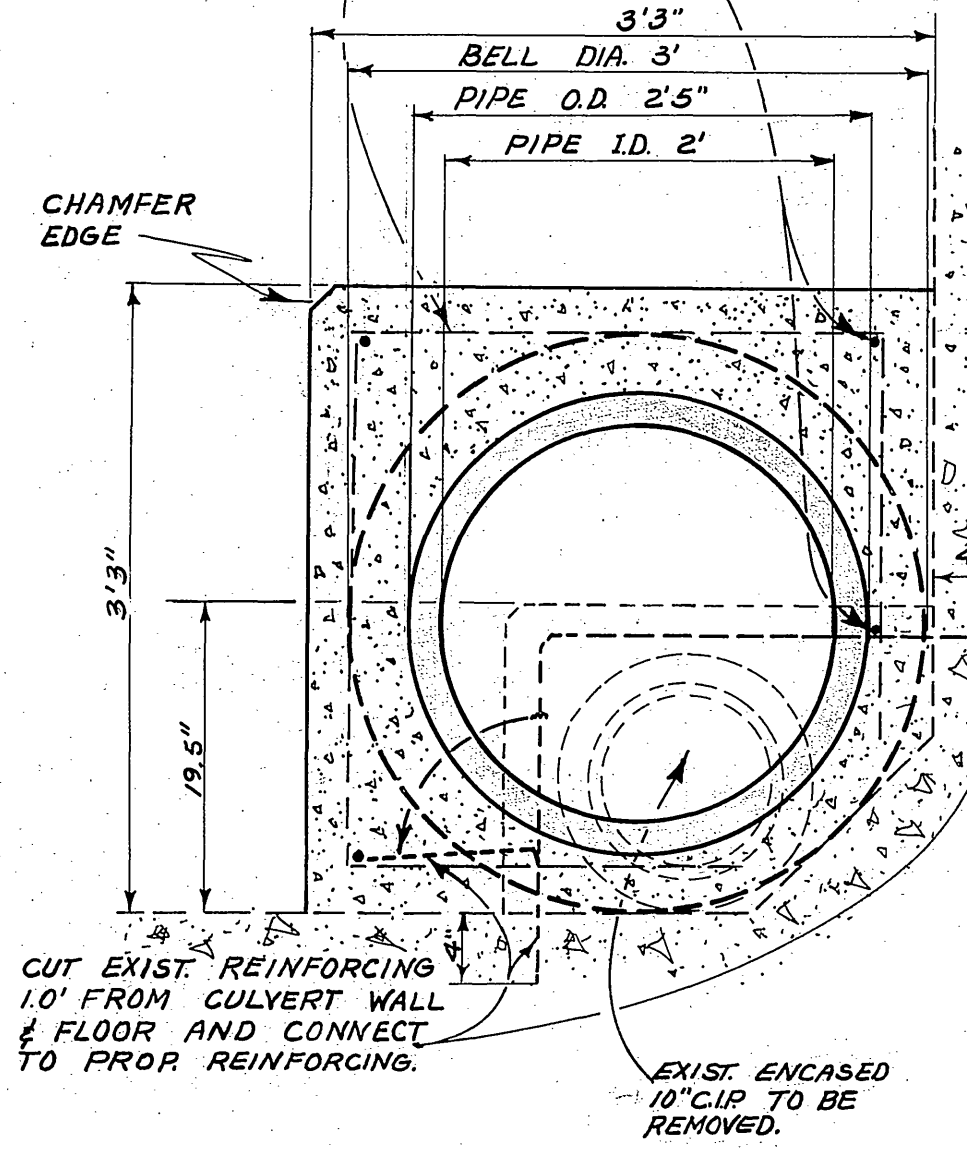


DETAIL 3
MANHOLE No. 2 - STA 54+85.5
JUNCTION OF 18" CIP AND
PROPOSED 24" VCP
NOT TO SCALE

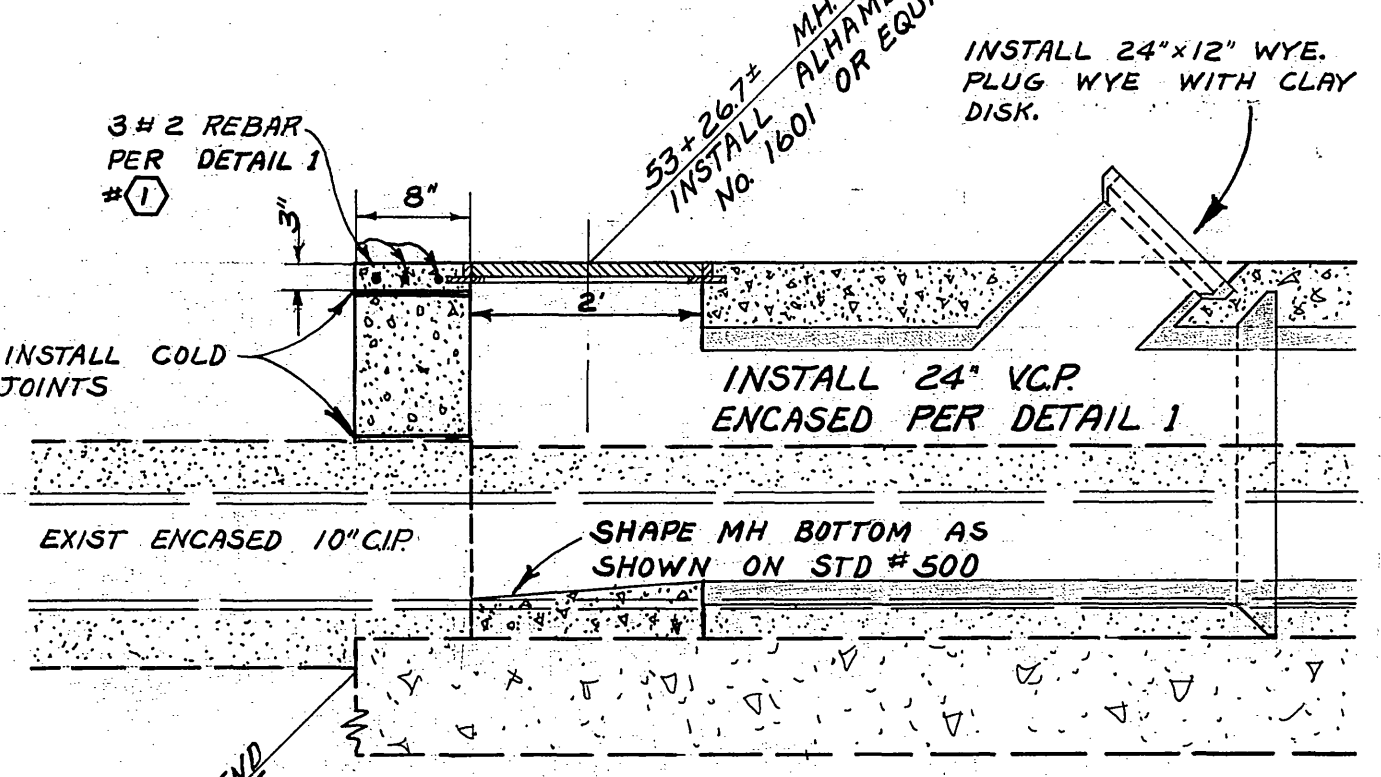
SCALES
HOR. 1" = 40'
VERT. 1" = 4'
F.B. S-11
B.M. EL. 828.427
NWLY CHIS. MARK ON EXIST.
M.H. No. 1 STA. 58+46.84,
50' WLY OF AT&SF CULVERT



- GENERAL NOTES**
- INITIAL CLEANING AND MAINTENANCE OF THE CULVERTS DURING CONSTRUCTION IS THE RESPONSIBILITY OF THE CONTRACTOR.
 - CONTRACTOR TO REMOVE EXISTING REINFORCED ENCASED 10" CIP BETWEEN STA. 53+25.7± AND STA. 54+86.5± AND BETWEEN STA. 58+46.8± AND STA. 60+74.
 - AFTER CONSTRUCTION CONTRACTOR TO RESTORE ALL DRAINAGE SYSTEMS TO ORIGINAL CONDITIONS.
 - MANHOLES 3 AND 4. CONTRACTOR TO REMOVE AND RECONSTRUCT EXISTING STRUCTURES OR MODIFY TO SUIT PROPOSED CONDITIONS AS DIRECTED. SEE DETAIL OF EXISTING STRUCTURES ON SHEET 6 OF 6.
 - ALL OBSTRUCTIONS REMOVED DURING CONSTRUCTION SHALL BE REPLACED IN KIND AS DIRECTED.
 - INJURY AND LOSS OF LIVESTOCK AS A RESULT OF CONSTRUCTION SHALL BE THE RESPONSIBILITY OF THE CONTRACTOR.
 - BEDDING SHALL BE PER STD. DWG. No. 452 CASE I, UNLESS NOTED DIFFERENT ON THE PLAN.



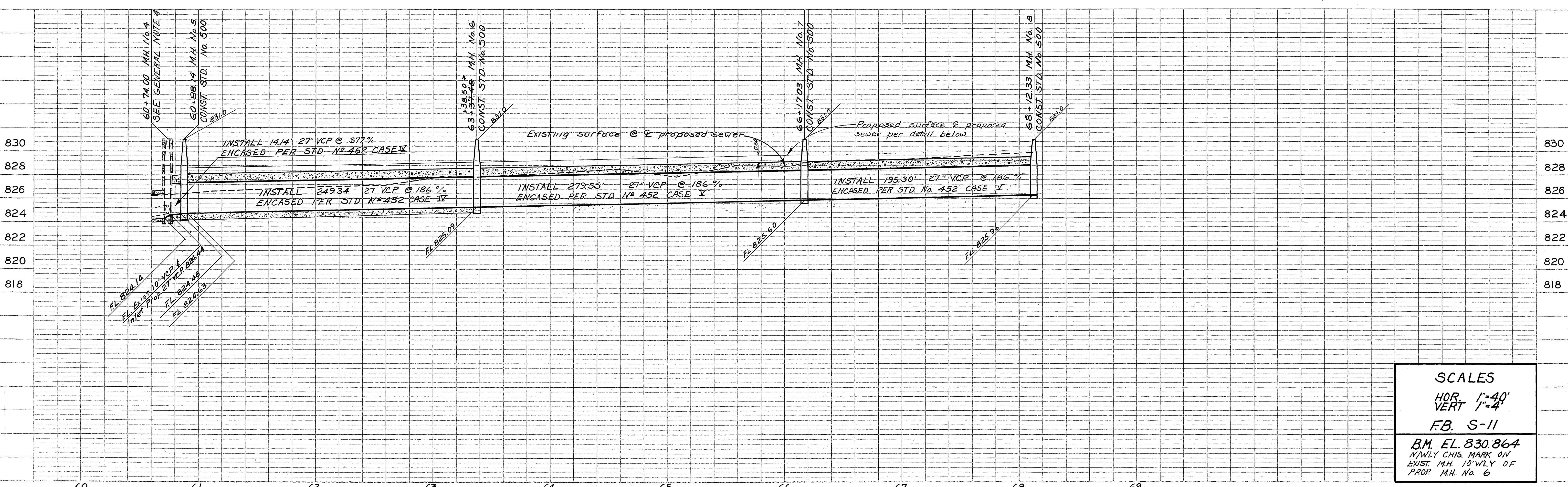
DETAIL 1
EXISTING ENCASED 10" CIP TO
BE REMOVED (STA. 53+26.7± TO STA.
54+86.5±) AND PROPOSED REINFORCED
ENCASED 24" VCP TO BE INSTALLED
(STA. 53+27± TO STA. 54+85± AND
STA. 58+46.84 TO STA. 60+74.00)
SCALE 1"=1'



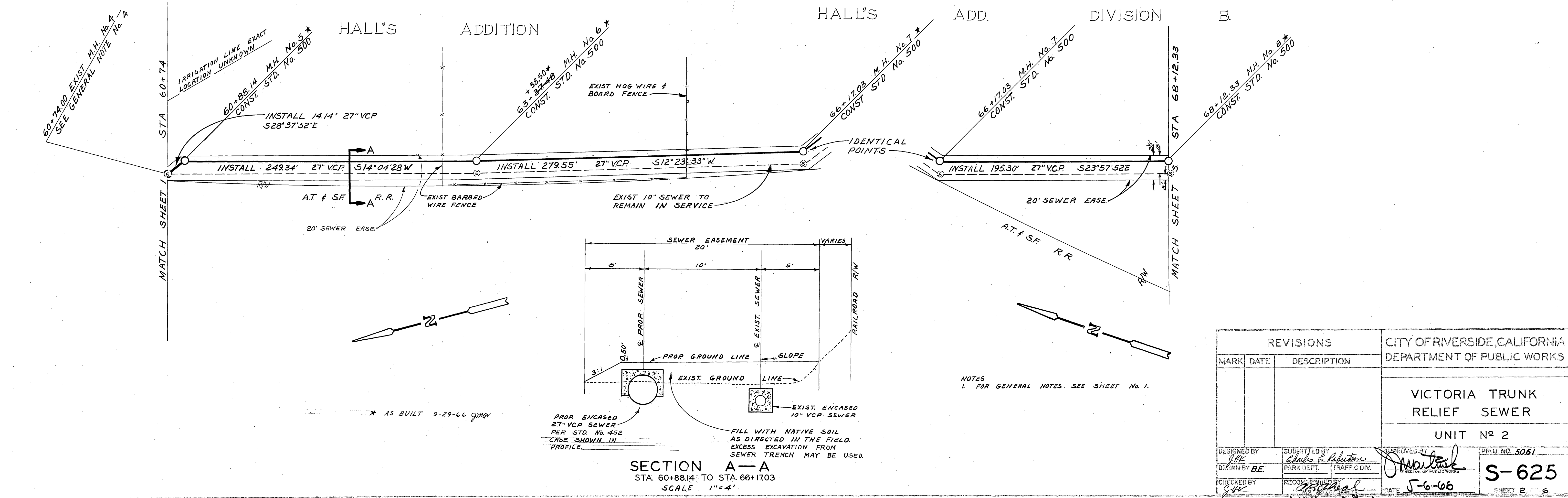
DETAIL 2
M.H. No. 1 - STA 53+26.7±
NOT TO SCALE

REVISIONS			CITY OF RIVERSIDE, CALIFORNIA DEPARTMENT OF PUBLIC WORKS	
MARK	DATE	DESCRIPTION		
			VICTORIA TRUNK RELIEF SEWER UNIT No. 2	
DESIGNED BY <i>JHE</i>	SUBMITTED BY <i>JHE</i>	APPROVED BY <i>[Signature]</i>	PROJ. No. 5061	
DRAWN BY <i>B.E.</i>	PARK DEPT. <i>[Signature]</i>	TRAFFIC DIV. <i>[Signature]</i>	S-625	
CHECKED BY <i>JHE</i>	RECOMMENDED BY <i>[Signature]</i>	DATE 5-6-66	SHEET 1 OF 6	

PROFILE	SUBMITTED	DATE
NO. 1	FLATTED	
NO. 2	NOTES CHECKED	
NO. 3	STRUCTURE NOTATIONS CHECKED	
	PLAN	DATE
	NO. 1	
	NO. 2	
	NO. 3	
	NO. 4	



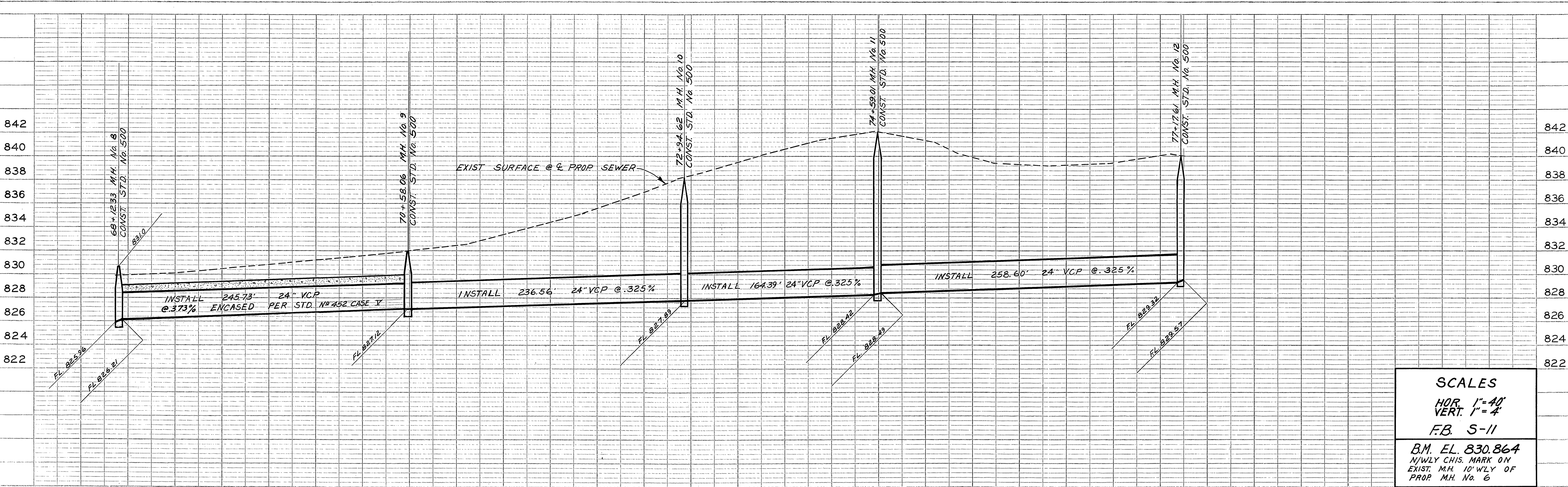
SCALES
 HOR. 1"=40'
 VERT. 1"=4'
 F.B. S-II
 B.M. EL. 830.864
 NEWLY CHIS. MARK ON
 EXIST. M.H. 10' WLY OF
 PROP. M.H. No. 6



REVISIONS			CITY OF RIVERSIDE, CALIFORNIA DEPARTMENT OF PUBLIC WORKS	
MARK	DATE	DESCRIPTION		
			VICTORIA TRUNK RELIEF SEWER UNIT No. 2	
DESIGNED BY	SUBMITTED BY	APPROVED BY	PROJ. NO. 5061	
DRAWN BY BE	Charles E. Robinson	William P. Ransom	S-625	
CHECKED BY	RECORDED BY	DATE	SHEET 2	6
		5-6-66		

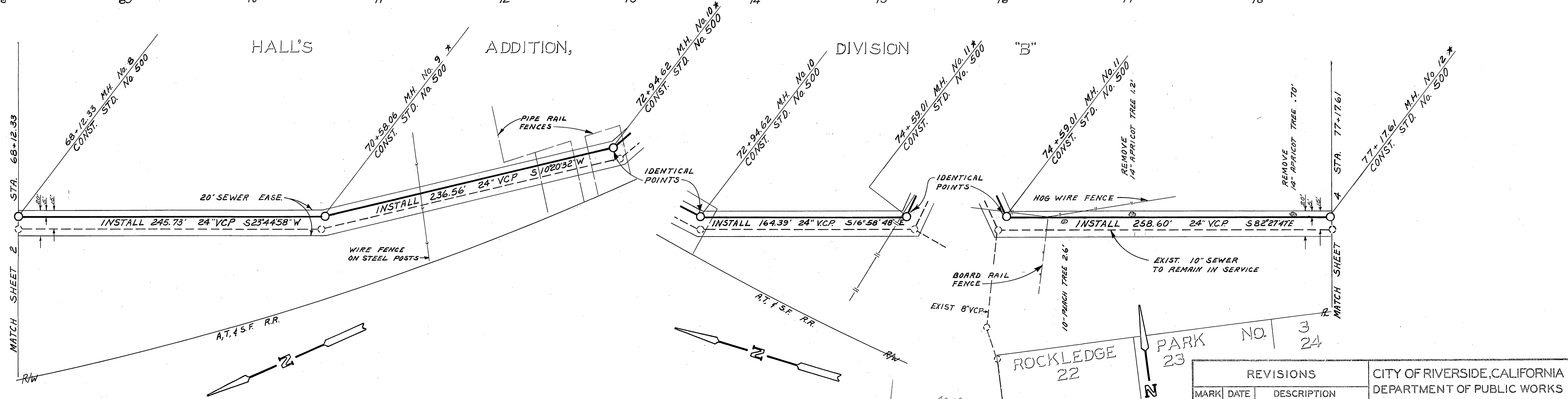
PROFILE	DATE
DESIGNED	
PLOTTED	
NOTE BOOK	
FRAMES CHECKED	
STRUCTURE NOTATION CHECKED	

PLAN	DATE
DESIGNED	
PLOTTED	
FRAMES CHECKED	
STRUCTURE NOTATION CHECKED	



SCALES
 HOR. 1" = 40'
 VERT. 1" = 4'
 F.B. S-11
 B.M. EL. 830.864
 N/WLY CHIS. MARK ON
 EXIST. M.H. 10' WLY OF
 PROP. M.H. No. 6

PROFILE	SUBMITTED	DATE
PLOTTED	FILED	
NO. 1	NO. 1	
NO. 2	NO. 2	
NO. 3	NO. 3	
NO. 4	NO. 4	
NO. 5	NO. 5	
NO. 6	NO. 6	
NO. 7	NO. 7	
NO. 8	NO. 8	
NO. 9	NO. 9	
NO. 10	NO. 10	
NO. 11	NO. 11	
NO. 12	NO. 12	
NO. 13	NO. 13	
NO. 14	NO. 14	
NO. 15	NO. 15	
NO. 16	NO. 16	
NO. 17	NO. 17	
NO. 18	NO. 18	
NO. 19	NO. 19	
NO. 20	NO. 20	
NO. 21	NO. 21	
NO. 22	NO. 22	
NO. 23	NO. 23	
NO. 24	NO. 24	
NO. 25	NO. 25	
NO. 26	NO. 26	
NO. 27	NO. 27	
NO. 28	NO. 28	
NO. 29	NO. 29	
NO. 30	NO. 30	
NO. 31	NO. 31	
NO. 32	NO. 32	
NO. 33	NO. 33	
NO. 34	NO. 34	
NO. 35	NO. 35	
NO. 36	NO. 36	
NO. 37	NO. 37	
NO. 38	NO. 38	
NO. 39	NO. 39	
NO. 40	NO. 40	
NO. 41	NO. 41	
NO. 42	NO. 42	
NO. 43	NO. 43	
NO. 44	NO. 44	
NO. 45	NO. 45	
NO. 46	NO. 46	
NO. 47	NO. 47	
NO. 48	NO. 48	
NO. 49	NO. 49	
NO. 50	NO. 50	

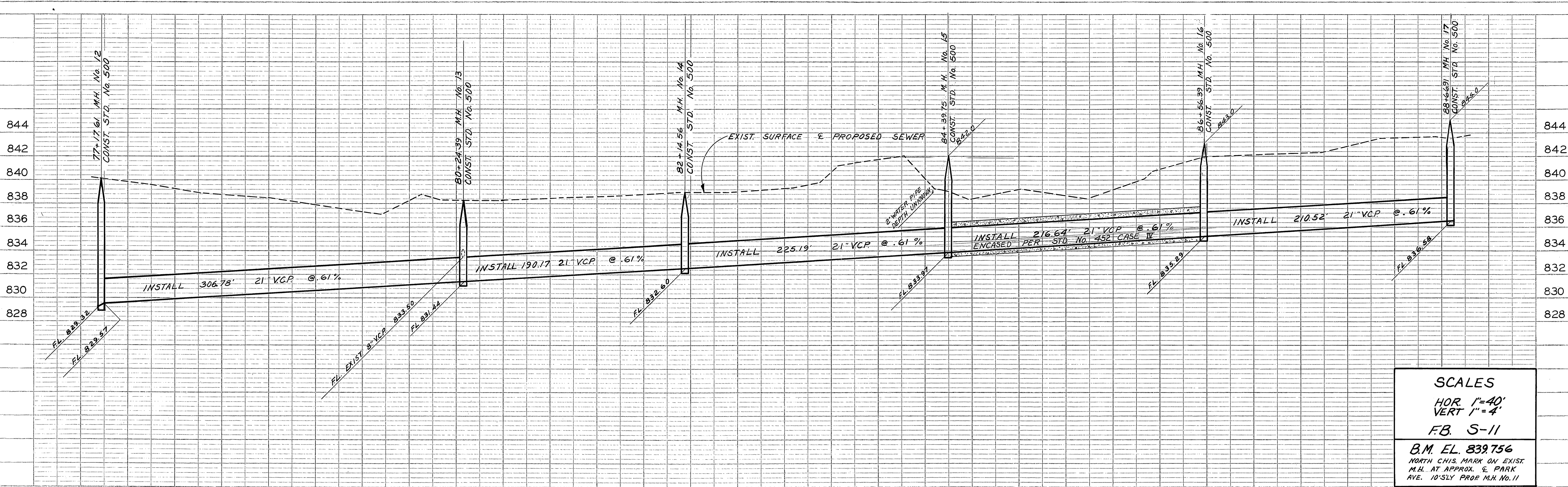


NOTES
 1. FOR GENERAL NOTES SEE SHEET No. 1

* AS BUILT 9-29-66 GYAN

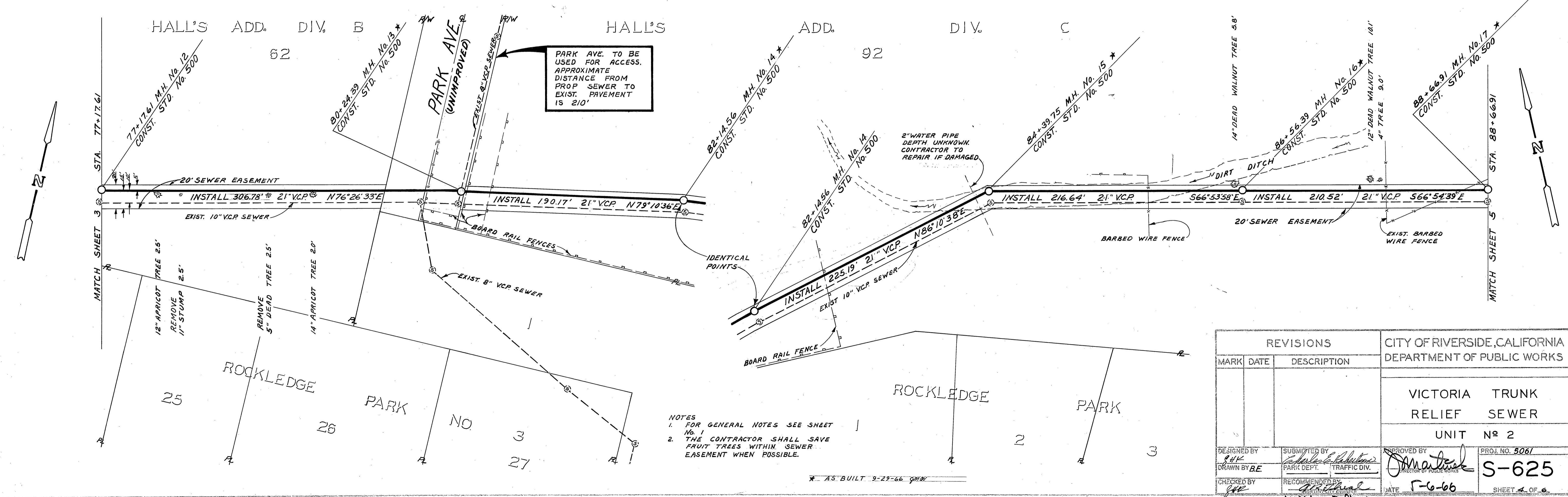
REVISIONS			CITY OF RIVERSIDE, CALIFORNIA DEPARTMENT OF PUBLIC WORKS	
MARK	DATE	DESCRIPTION	VICTORIA TRUNK RELIEF SEWER UNIT No 2	
DESIGNED BY S.H.C.	SUBMITTED BY C. J. ...	APPROVED BY [Signature]	PROJ. NO. 5061	S-625
DRAWN BY B.E.	PARK DEPT.	TRAFFIC DIV.	DATE 5-6-66	
CHECKED BY S.H.C.	RECOMMENDED BY [Signature]	DATE 5-6-66	WILLIAM P. HARDNER	SHEET 3 OF 6

PLAN	SUBMITTED	DATE
NO. 1	FILED	
NO. 2	NO. 2	
NO. 3	NO. 3	
NO. 4	NO. 4	
NO. 5	NO. 5	
NO. 6	NO. 6	
NO. 7	NO. 7	
NO. 8	NO. 8	
NO. 9	NO. 9	
NO. 10	NO. 10	
NO. 11	NO. 11	
NO. 12	NO. 12	
NO. 13	NO. 13	
NO. 14	NO. 14	
NO. 15	NO. 15	
NO. 16	NO. 16	
NO. 17	NO. 17	
NO. 18	NO. 18	
NO. 19	NO. 19	
NO. 20	NO. 20	
NO. 21	NO. 21	
NO. 22	NO. 22	
NO. 23	NO. 23	
NO. 24	NO. 24	
NO. 25	NO. 25	
NO. 26	NO. 26	
NO. 27	NO. 27	
NO. 28	NO. 28	
NO. 29	NO. 29	
NO. 30	NO. 30	
NO. 31	NO. 31	
NO. 32	NO. 32	
NO. 33	NO. 33	
NO. 34	NO. 34	
NO. 35	NO. 35	
NO. 36	NO. 36	
NO. 37	NO. 37	
NO. 38	NO. 38	
NO. 39	NO. 39	
NO. 40	NO. 40	
NO. 41	NO. 41	
NO. 42	NO. 42	
NO. 43	NO. 43	
NO. 44	NO. 44	
NO. 45	NO. 45	
NO. 46	NO. 46	
NO. 47	NO. 47	
NO. 48	NO. 48	
NO. 49	NO. 49	
NO. 50	NO. 50	



PROFILE	PLANNED	BY	DATE
NOTE BOOK	GRADES CHECKED		
NO.	STRUCTURE NOTATION CHECKED		

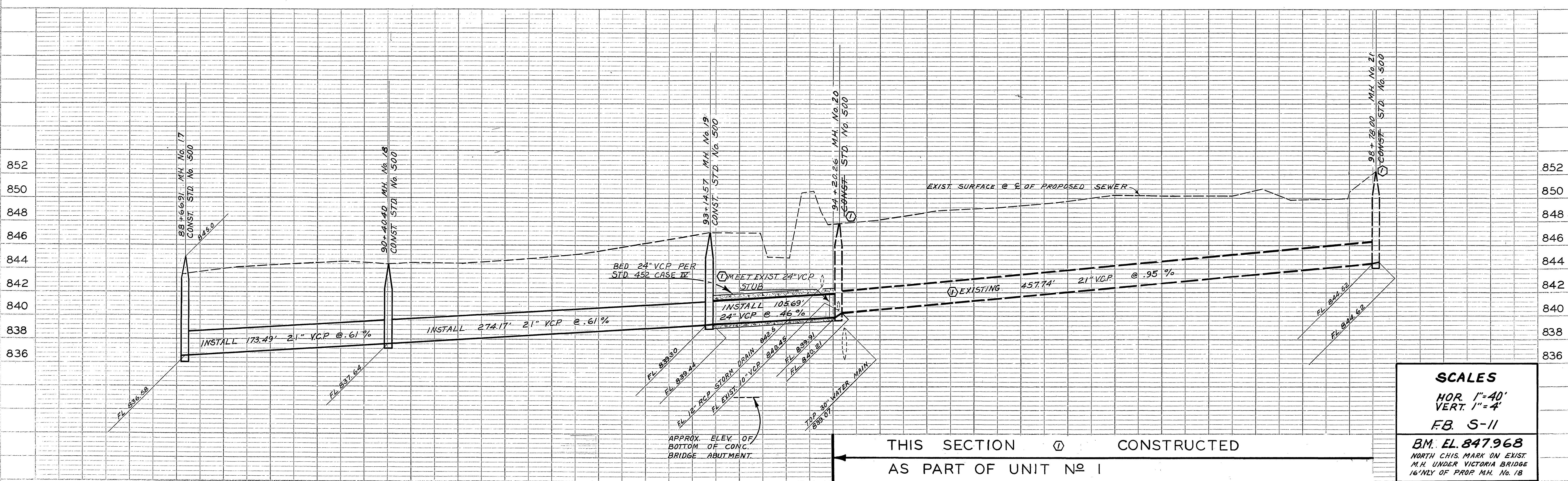
SCALES
 HOR 1"=40'
 VERT 1"=4'
 FB. S-11
 B.M. EL. 839756
 NORTH CHIS. MARK ON EXIST.
 M.H. AT APPROX. E. PARK
 AVE. 10'SLY PROP. M.H. NO. 11



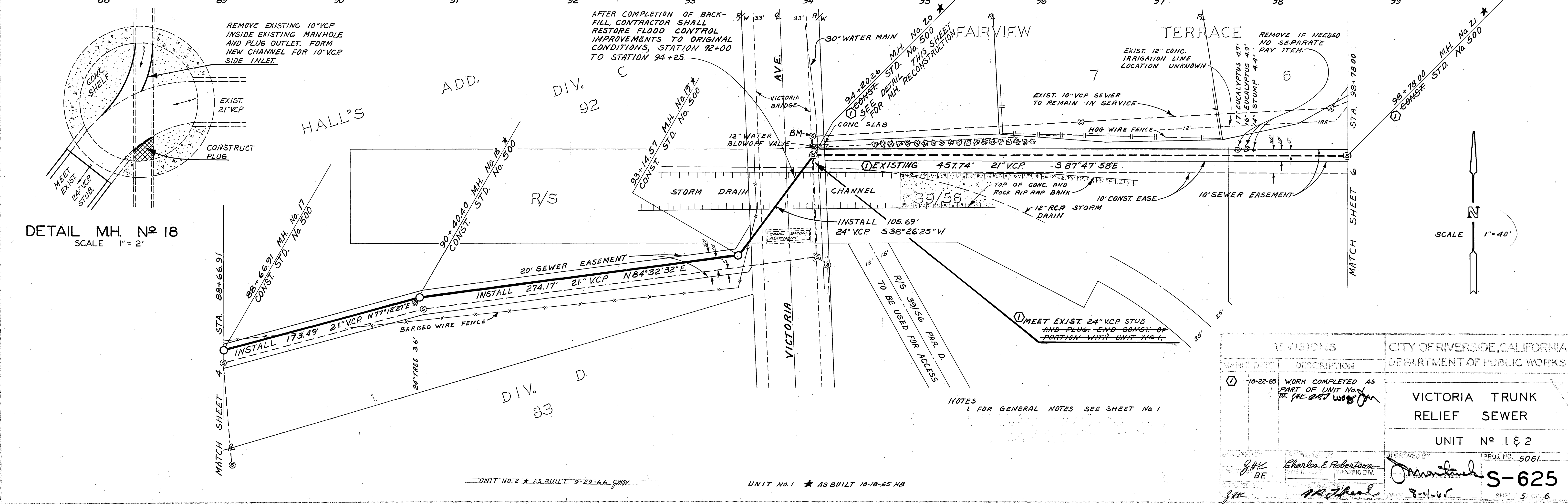
PLAN	PLANNED	BY	DATE
NOTE BOOK	ALIGNMENT CHECKED		
NO.	RECORDS CHECKED		

NOTES
 1. FOR GENERAL NOTES SEE SHEET No. 1
 2. THE CONTRACTOR SHALL SAVE FRUIT TREES WITHIN SEWER EASEMENT WHEN POSSIBLE.

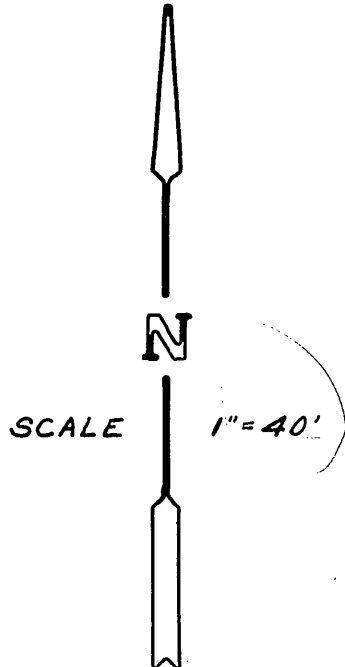
REVISIONS			CITY OF RIVERSIDE, CALIFORNIA DEPARTMENT OF PUBLIC WORKS	
MARK	DATE	DESCRIPTION		
			VICTORIA TRUNK RELIEF SEWER	
			UNIT No. 2	
DESIGNED BY	SUBMITTED BY	APPROVED BY	PROJ. NO. 5067	
DRAWN BY BE	PARK DEPT.	TRAFFIC DIV.	S-625	
CHECKED BY	RECOMMENDED BY	DATE	SHEET 4 OF 6	
	William D. Hardman	5-6-66		



SCALES
 HOR. 1"=40'
 VERT. 1"=4'
 F.B. S-II
 B.M. EL. 847.968
 NORTH CHIS. MARK ON EXIST.
 M.H. UNDER VICTORIA BRIDGE
 16' NLY OF PROP. M.H. No. 18

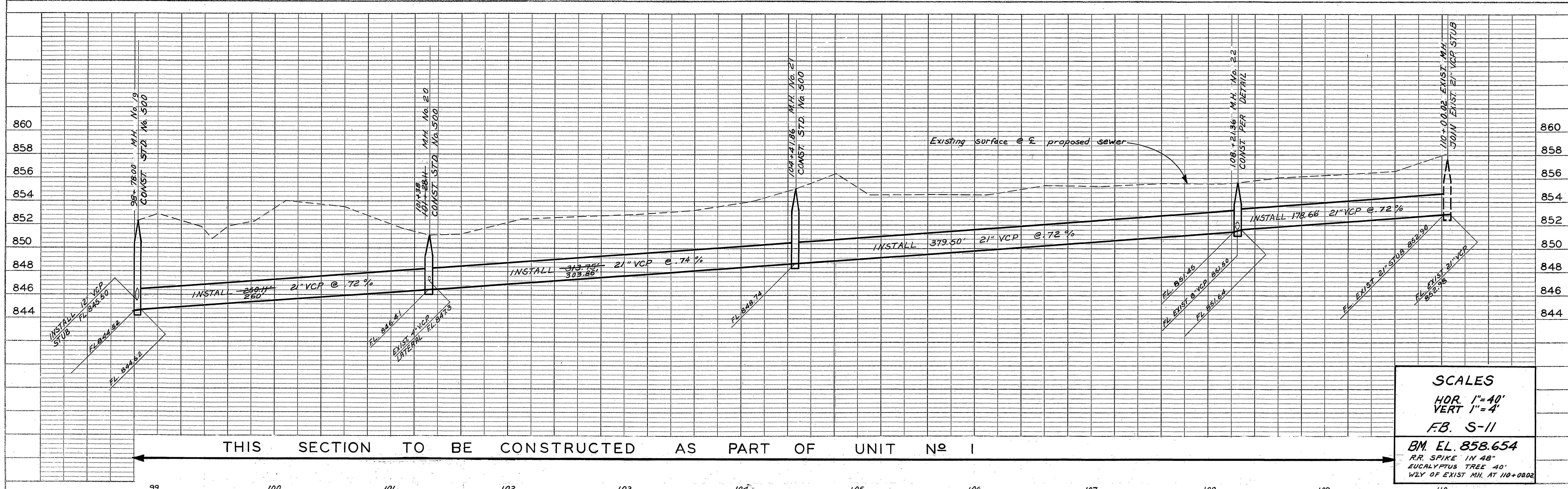


DETAIL MH. No. 18
 SCALE 1"=2'



REVISIONS		CITY OF RIVERSIDE, CALIFORNIA DEPARTMENT OF PUBLIC WORKS	
NO.	DATE	DESCRIPTION	
1	10-22-65	WORK COMPLETED AS PART OF UNIT NO. 1 BE (PL. DAT. WOOD)	

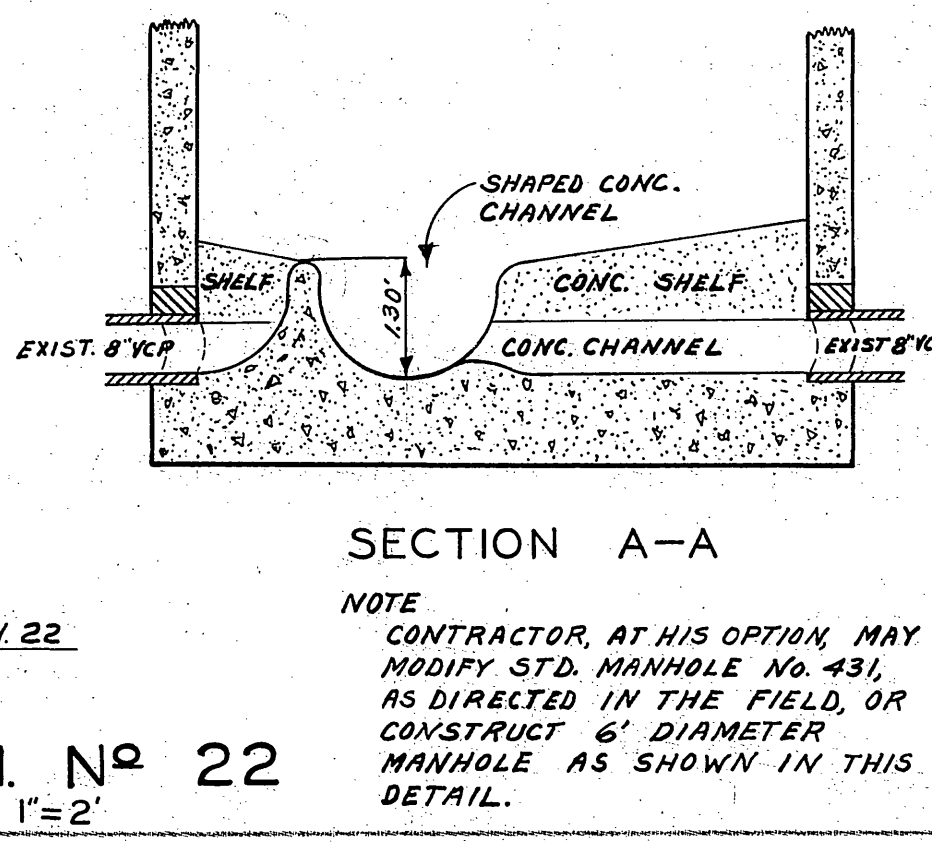
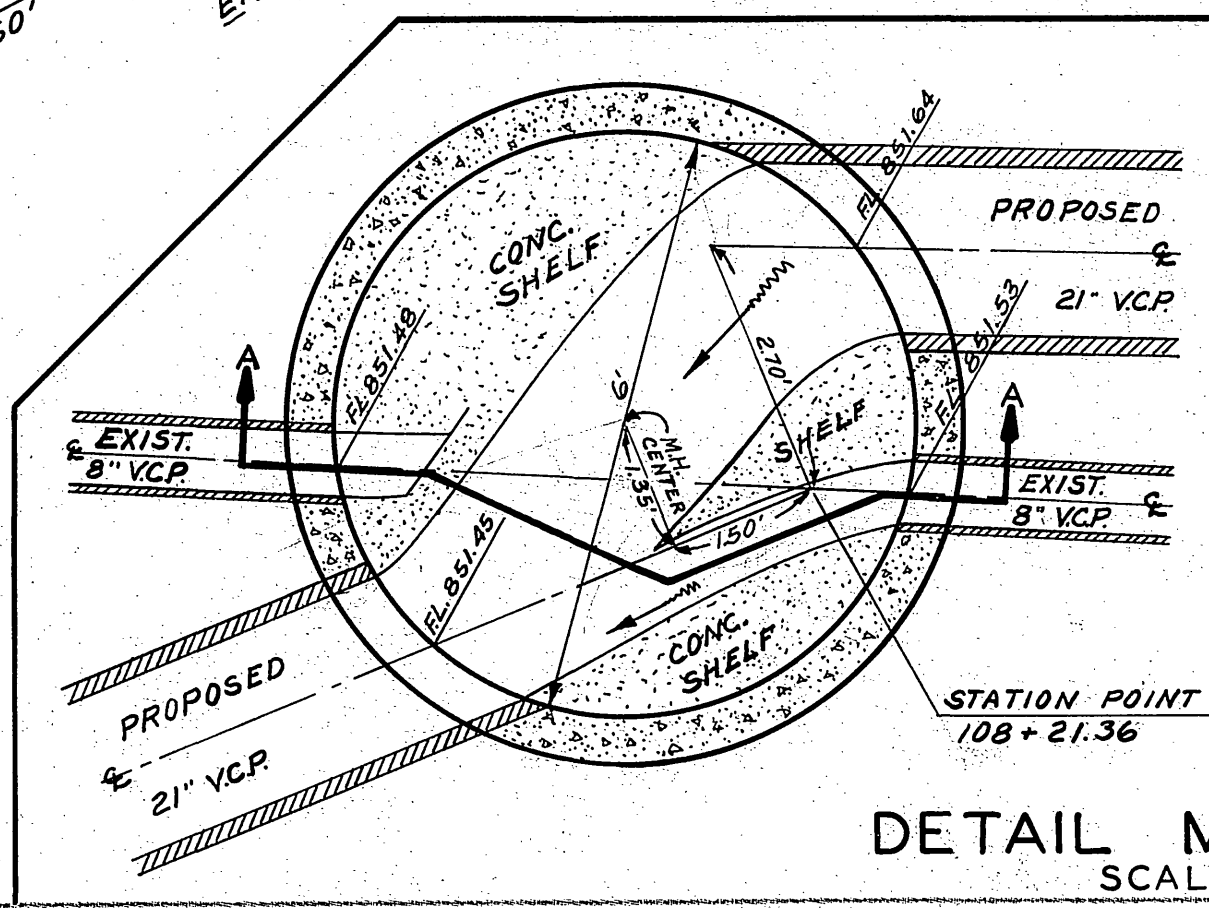
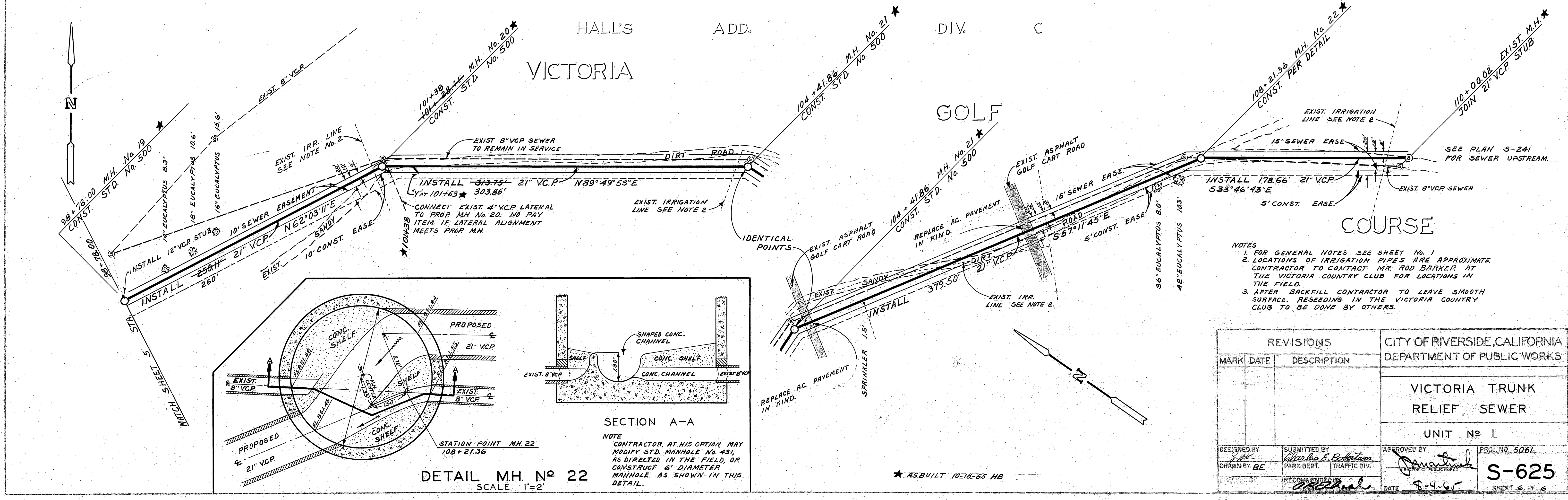
DESIGNED BY J.H.K. BE	DRAWN BY Charles E. Robertson S.A.F.I.C. DIV.	APPROVED BY <i>[Signature]</i> 8-1-65	PERM. NO. 5061 S-625 5 6
-----------------------------	---	---	---------------------------------------



THIS SECTION TO BE CONSTRUCTED AS PART OF UNIT No 1

SCALES
 HOR. 1"=40'
 VERT 1"=4'
 F.B. S-11
 B.M. EL. 858.654
 RR SPIKE IN 48"
 EUCALYPTUS TREE 40'
 WLY OF EXIST. MH. AT 10+00.02

PROFILE
 SURVEYED
 PLOTTED
 GRADES CHECKED
 PLAN CHECKED
 DATE: 5-4-65



- NOTES
- FOR GENERAL NOTES SEE SHEET No. 1
 - LOCATIONS OF IRRIGATION PIPES ARE APPROXIMATE. CONTRACTOR TO CONTACT MR. ROD BARKER AT THE VICTORIA COUNTRY CLUB FOR LOCATIONS IN THE FIELD.
 - AFTER BACKFILL CONTRACTOR TO LEAVE SMOOTH SURFACE. RESEEDING IN THE VICTORIA COUNTRY CLUB TO BE DONE BY OTHERS.

REVISIONS		CITY OF RIVERSIDE, CALIFORNIA DEPARTMENT OF PUBLIC WORKS	
MARK	DATE	DESCRIPTION	

DESIGNED BY <i>S.H.C.</i>		SUBMITTED BY <i>Charles E. Robertson</i>		APPROVED BY <i>[Signature]</i>		PROJ. NO. 5061	
DRAWN BY BE		PARK DEPT.		TRAFFIC DIV.		S-625	
CHECKED BY		RECOMMENDED BY <i>[Signature]</i>		DATE 5-4-65		SHEET 6 OF 6	

PLAN
 SURVEYED
 PLOTTED
 ALIGNMENT CHECKED
 RT. OF WAY CHECKED
 DATE: 5-4-65

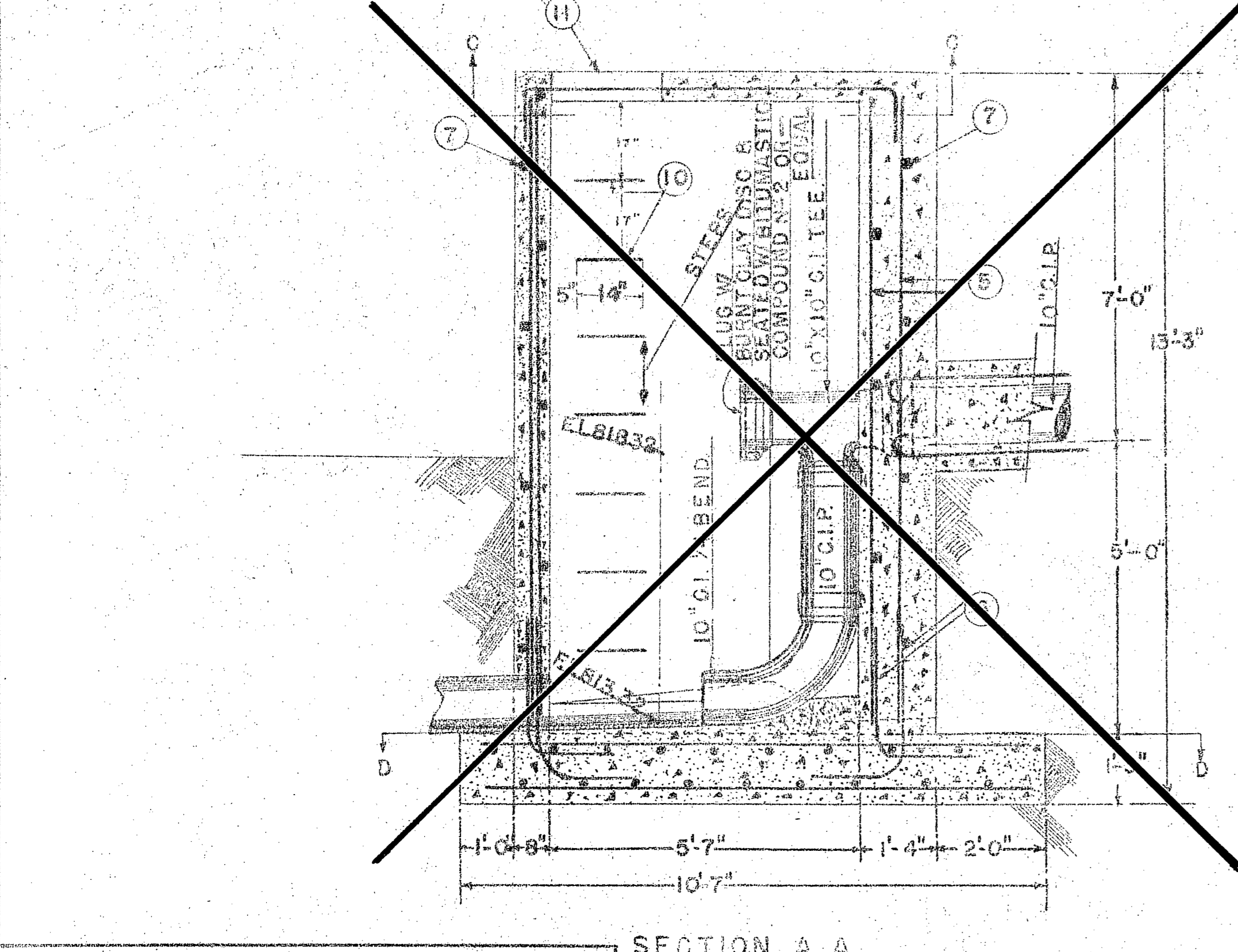
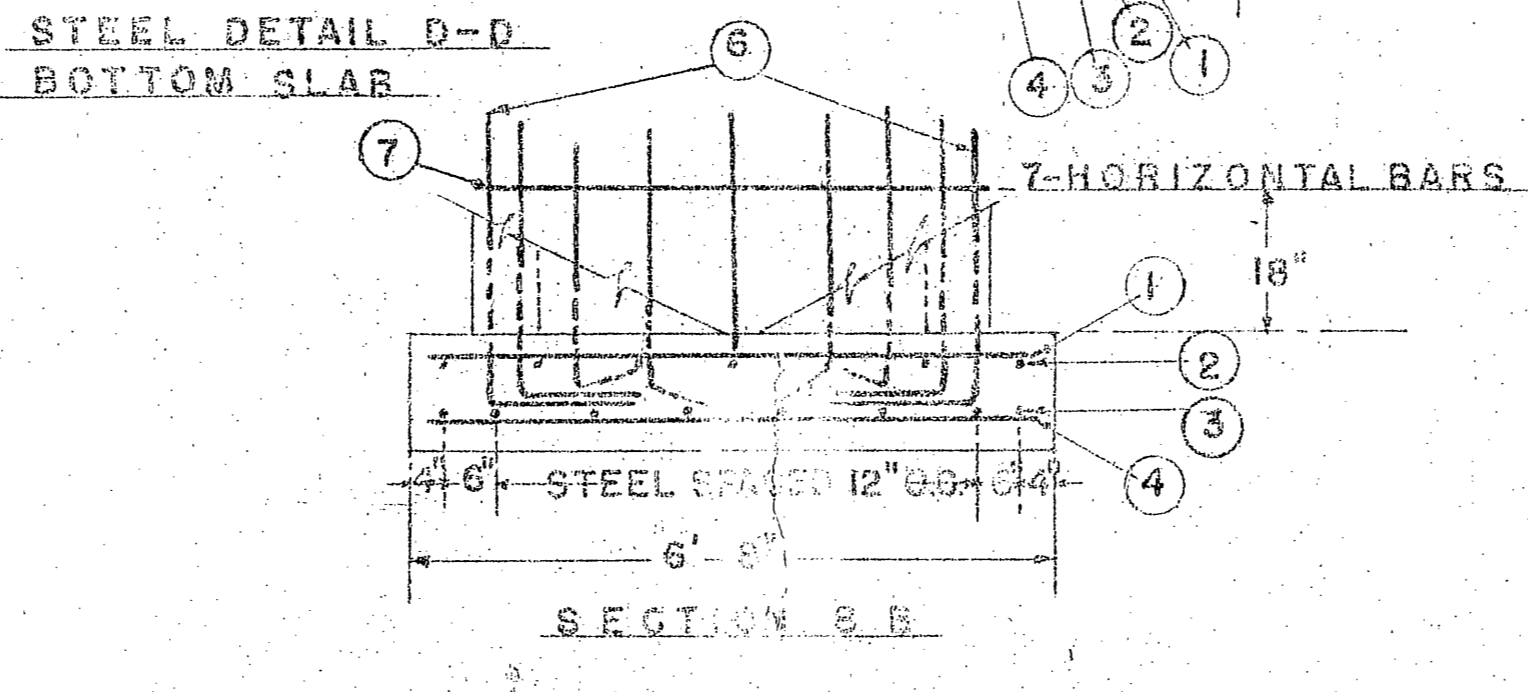
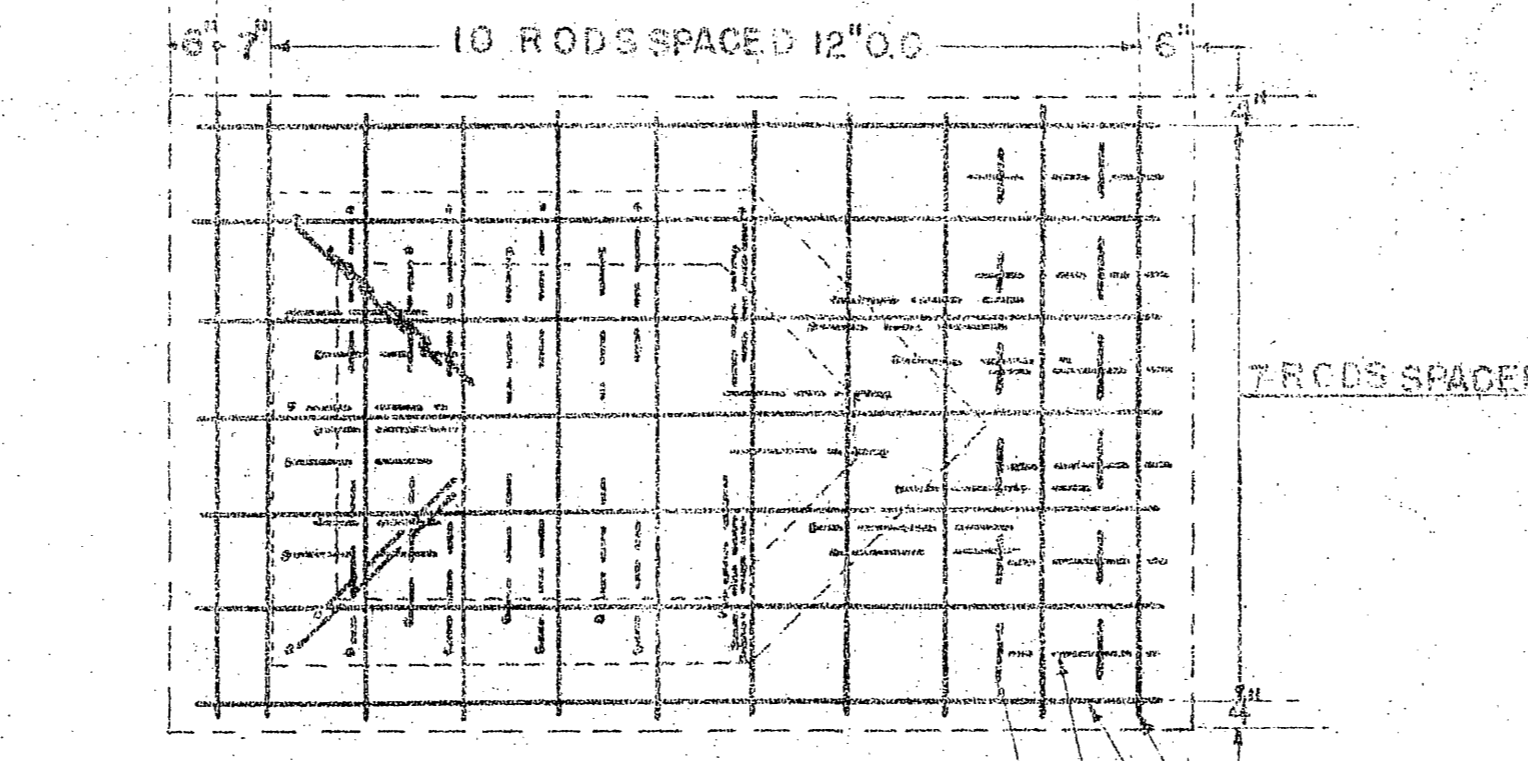
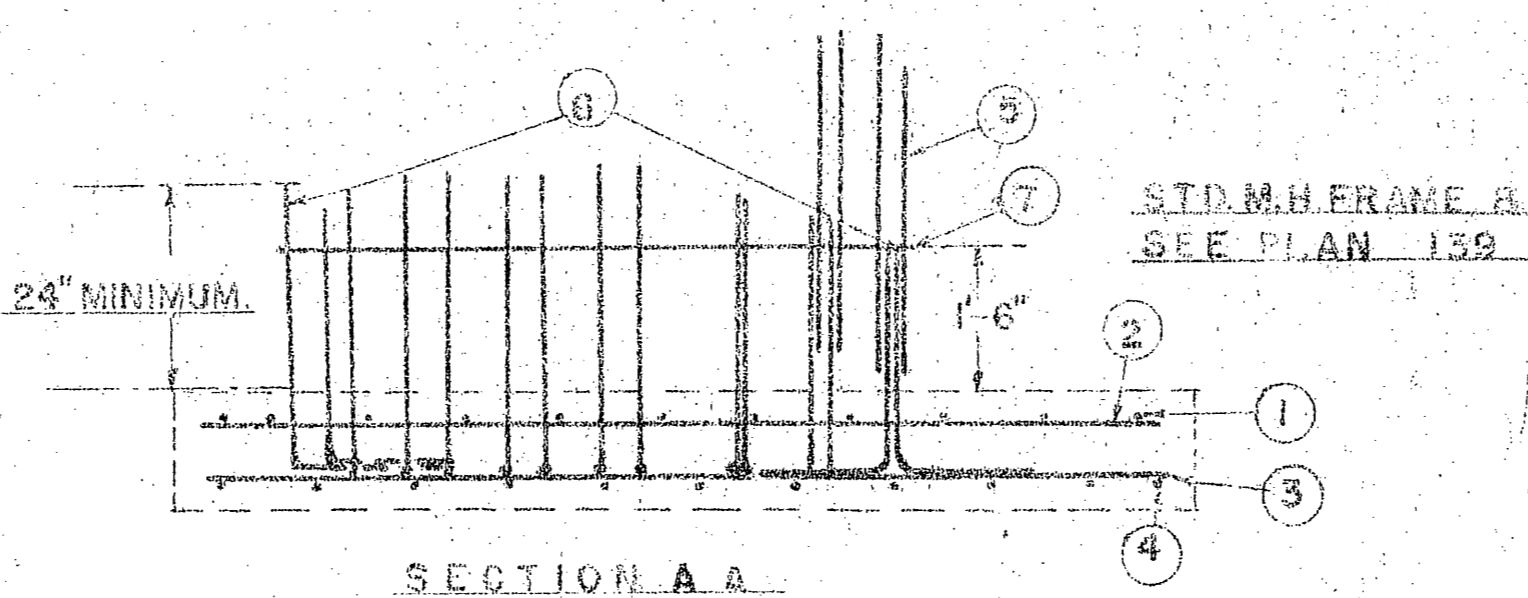
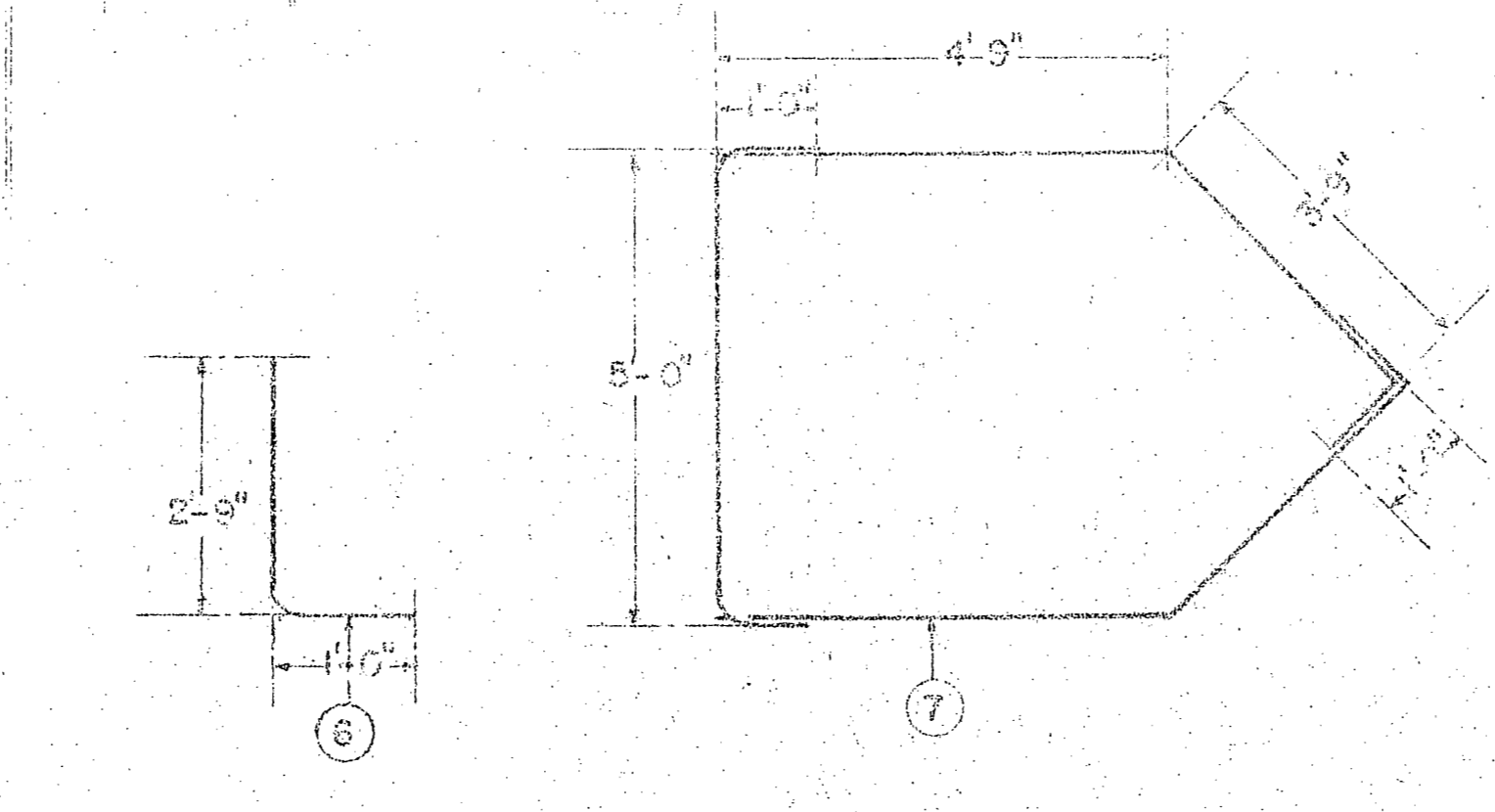
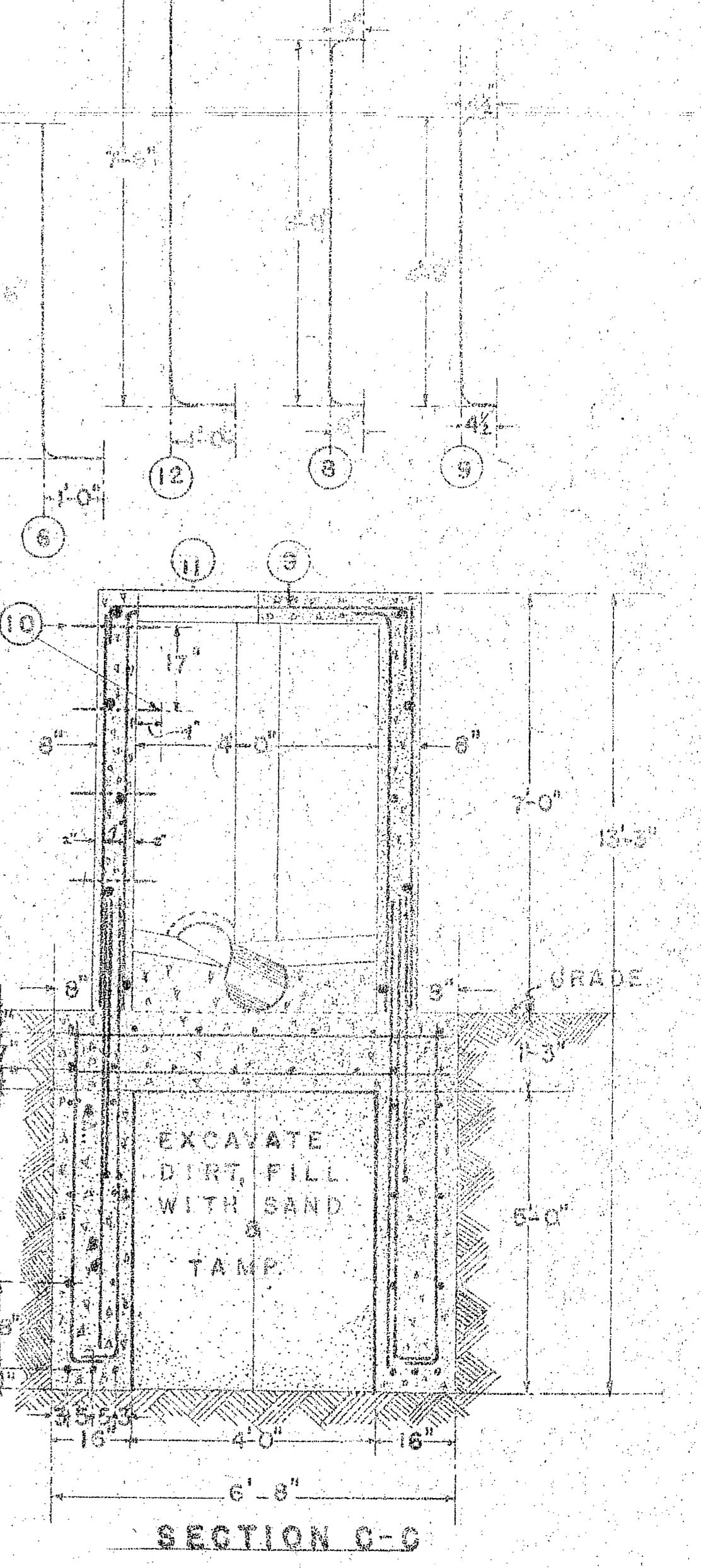
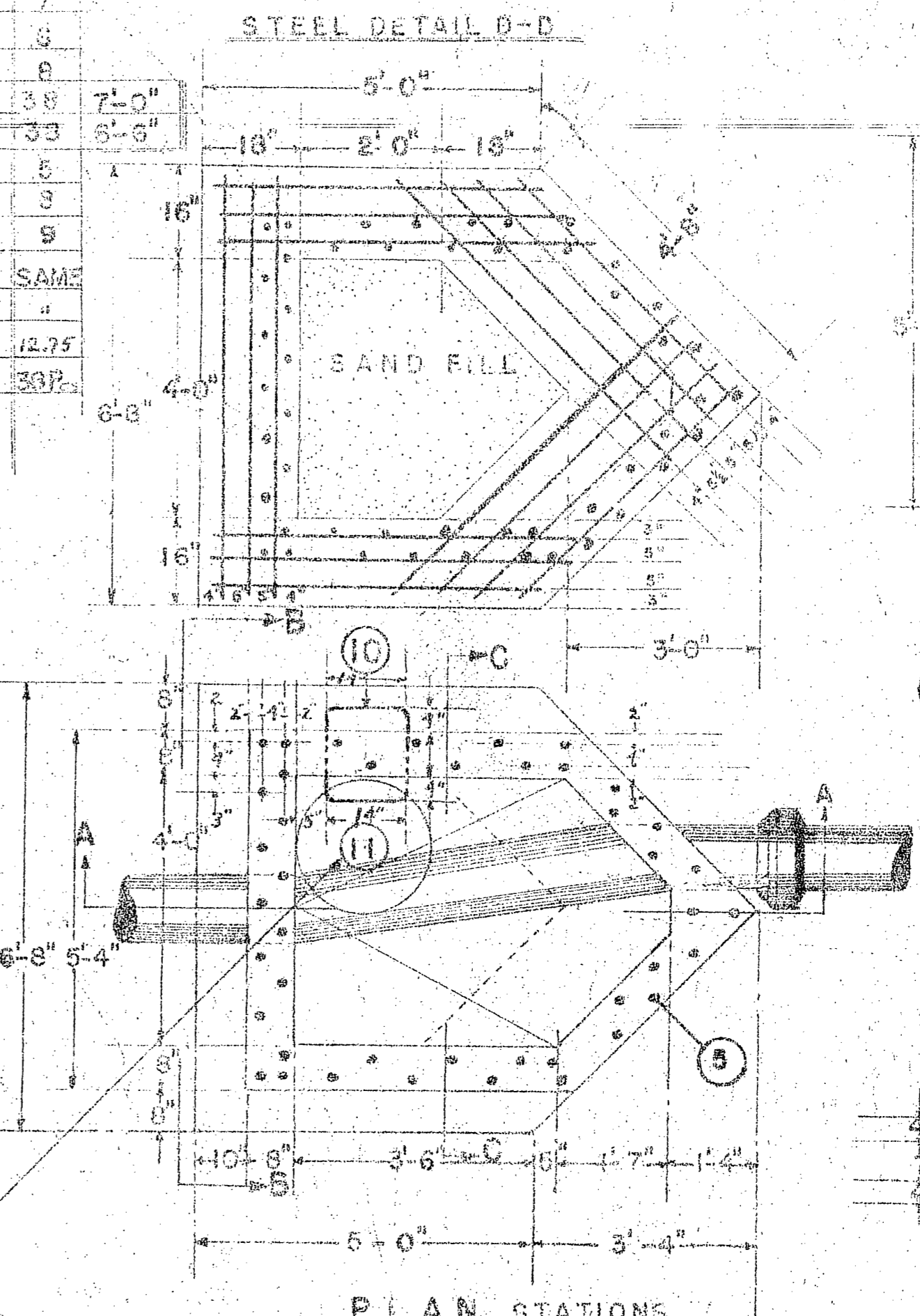
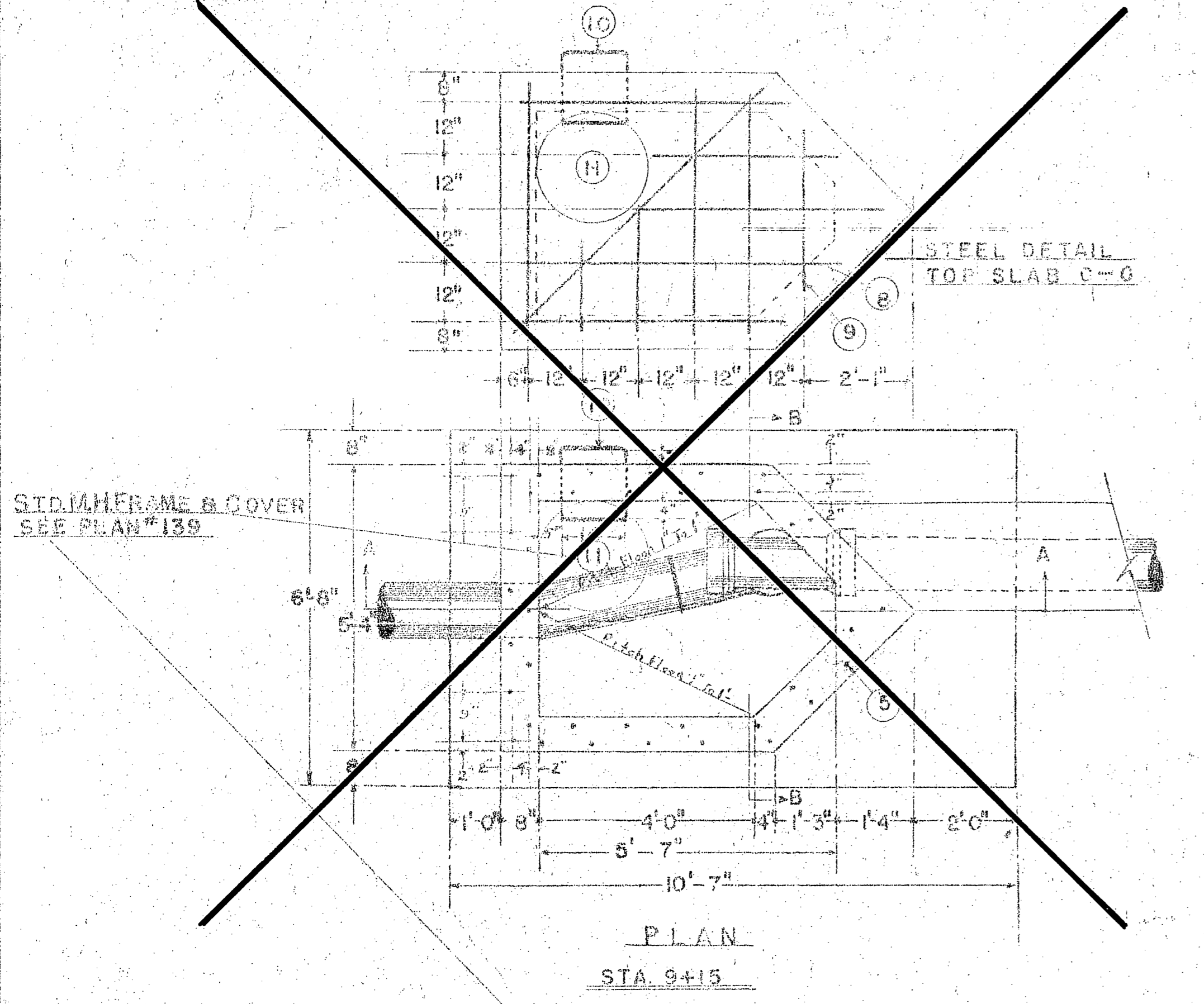
★ AS BUILT 10-18-65 HB

SPECIAL DROP STRUCTURE

SPECIAL STRUCTURE

NO.	QUANTITY	MATERIAL LIST DESCRIPTION	AMT. INDICATED IN R.H. COLUMN
1	11 PDS.	3/4" X 6'-4" PER LIN. FT. 150 LB. INTERMEDIATE	7
2	7 "	3/4" X 10'-3" " " " " " " " "	7
3	8 "	3/4" X 10'-3" " " " " " " " "	8
4	1 "	3/4" X 8'-4" " " " " " " " "	8
5	39 "	1/2" X 11'-6" " " " " " " " "	38
6	35 "	1/2" X 5'-9" " " " " " " " "	33
7	7 "	1/2" X 2'-0" " " " " " " " "	5
8	6 "	1/2" X 7'-0" " " " " " " " "	3
9	6 "	1/2" X 5'-9" " " " " " " " "	9
10	11 "	MANHOLE STEPS, SHALL BE 3/4" GALVANIZED DIMENSION AS SHOWN	SAME
11		USE STANDARD TYPE "A" MANHOLE FRAME & COVER	"
12	12	1 1/2" CONC. 1 1/2" X 8'-6" PER LIN. FT. 0.95 LB. INTERMEDIATE STEEL FORM AT SHOUL.	12.75

MATERIAL LIST SAME AS SPECIAL DROP STRUCTURE EXCEPT AMT. INDICATED IN R.H. COLUMN.

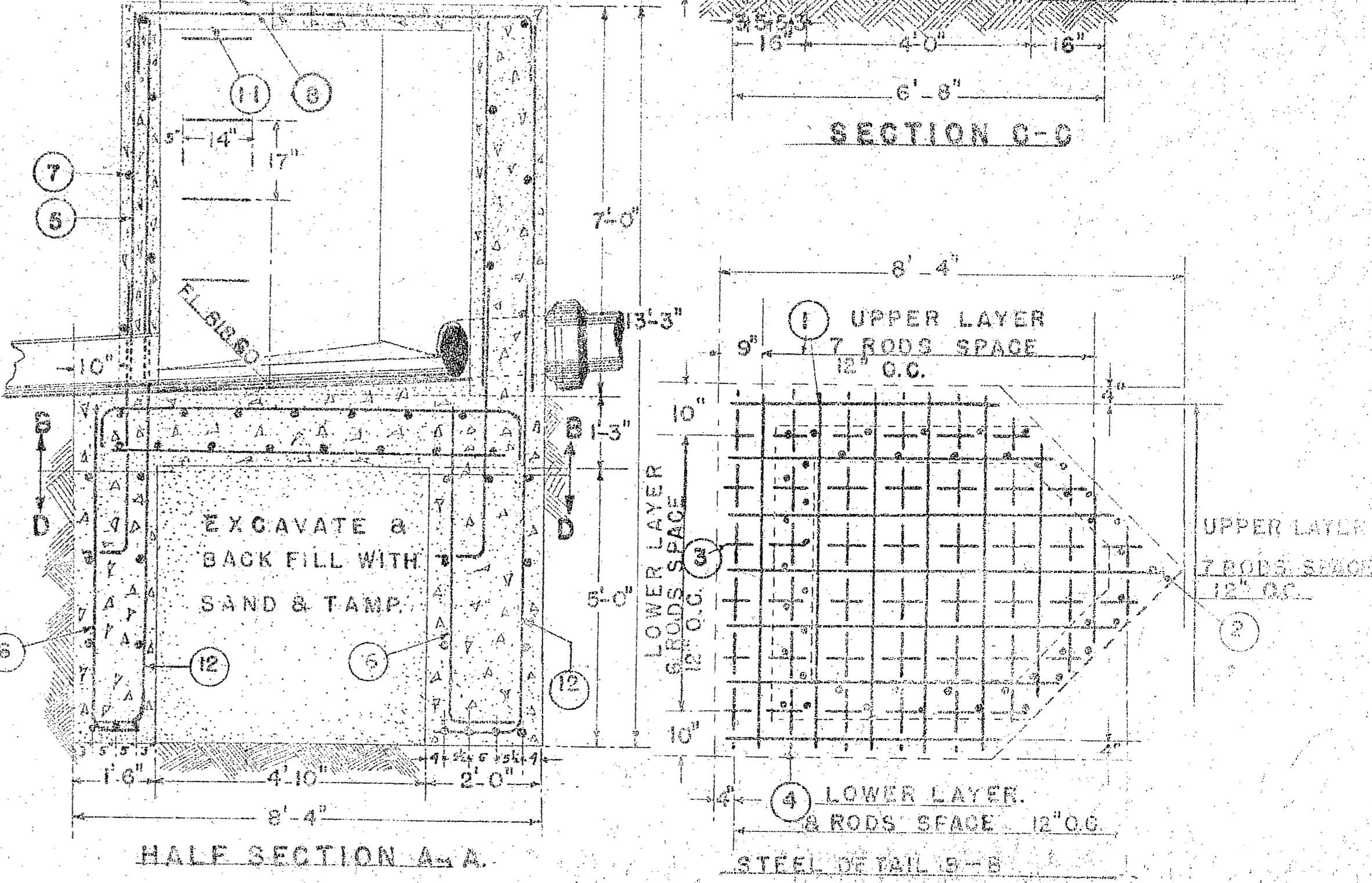


VICTORIA HILL TRUNK LINE
SANITARY SEWER

RIVERSIDE - CALIFORNIA

Approved *m. H. Irvine*
CITY ENGINEER

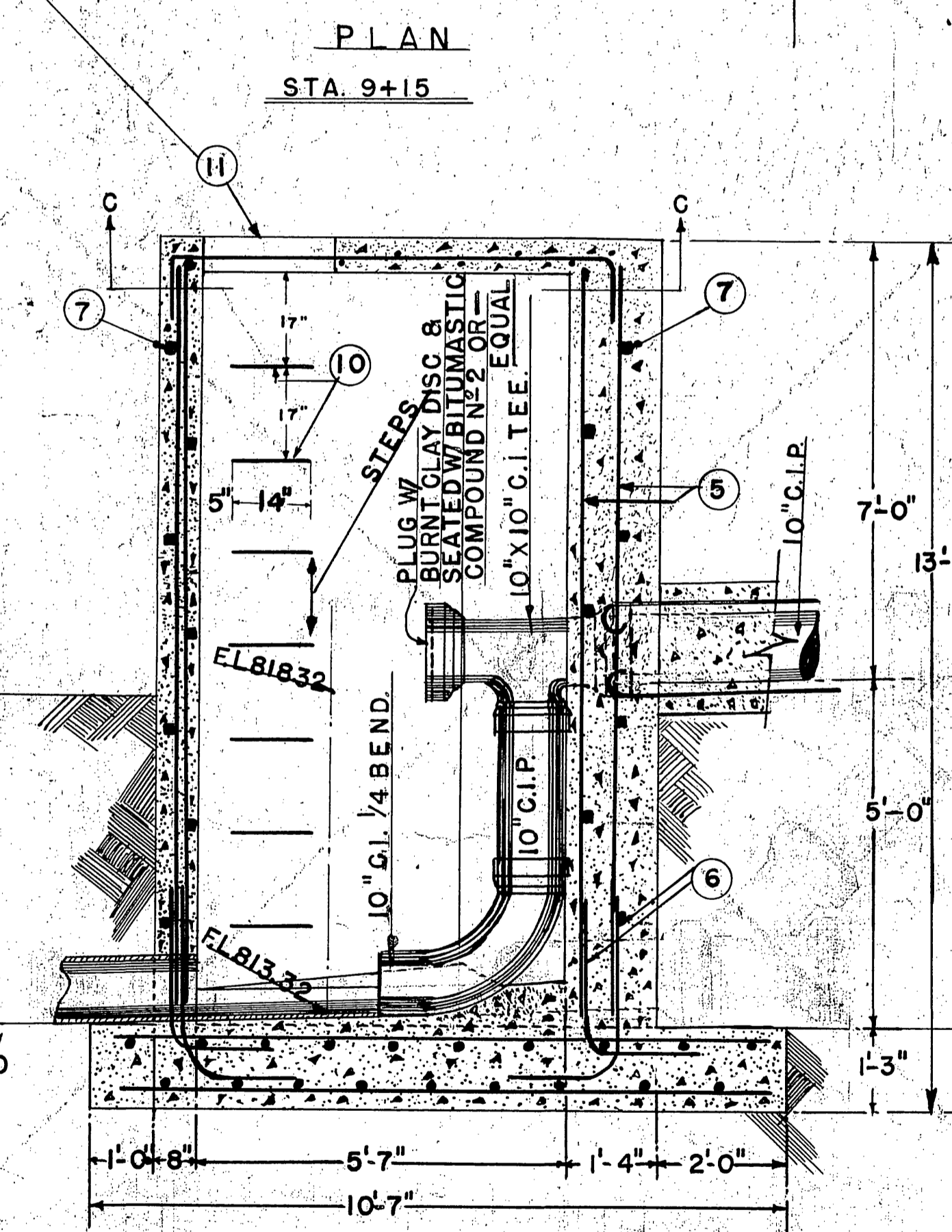
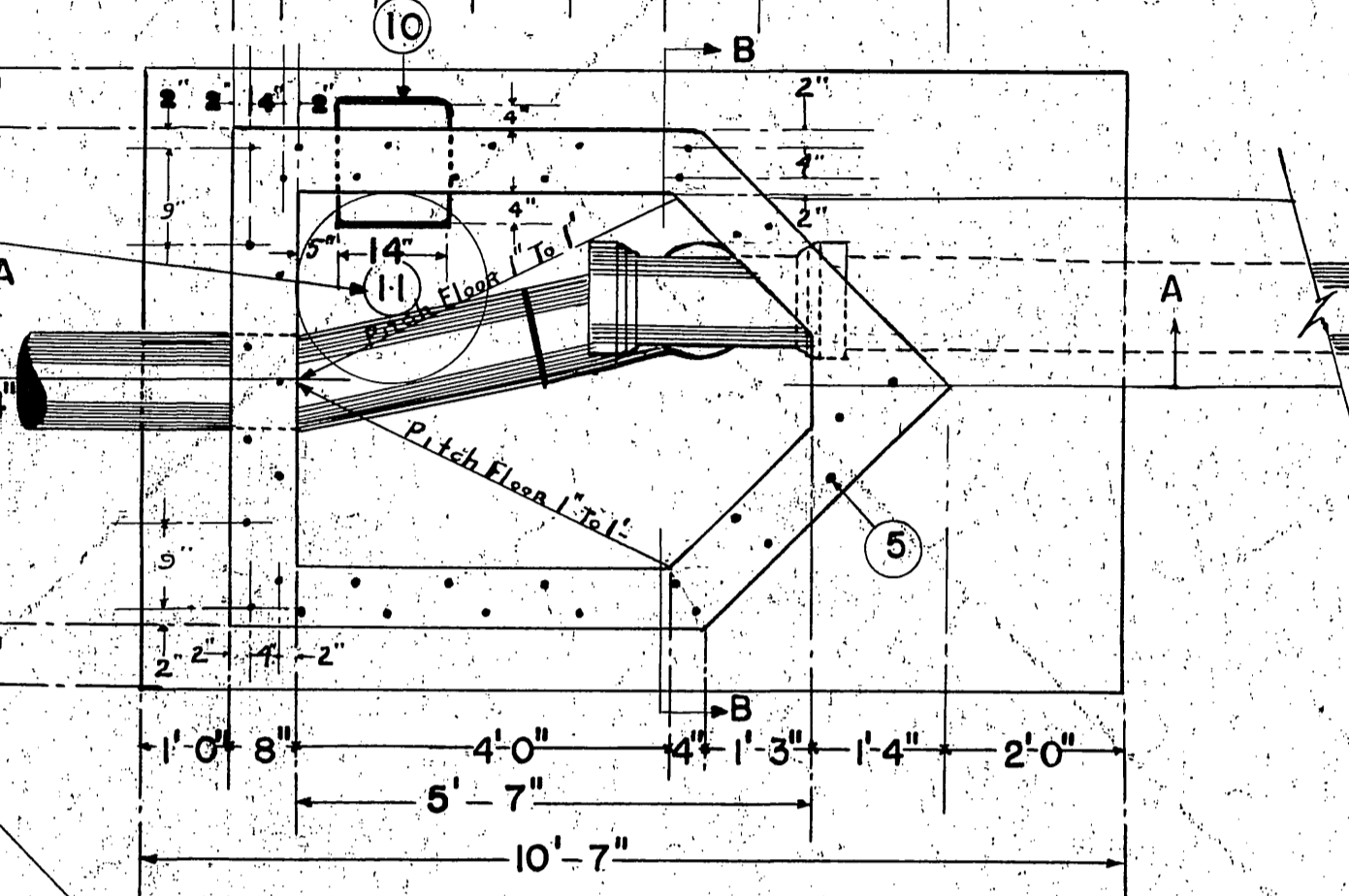
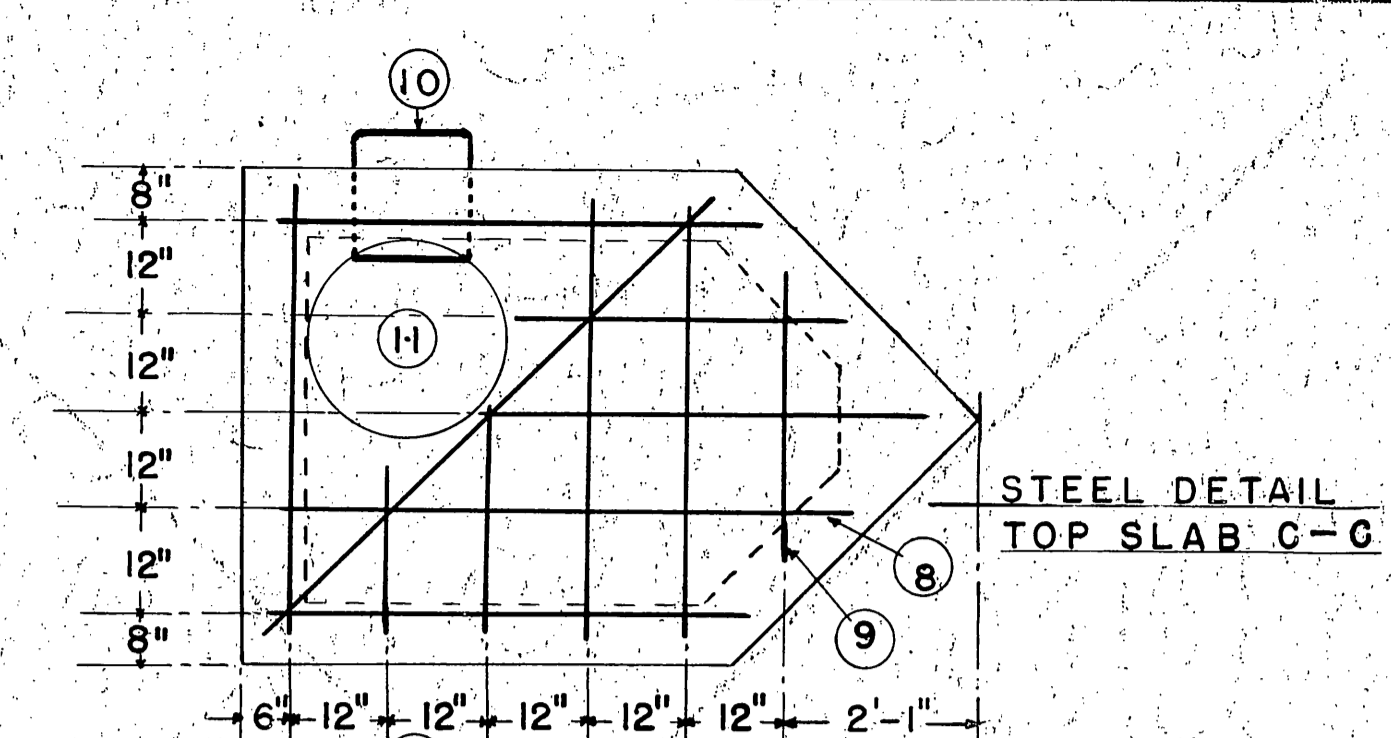
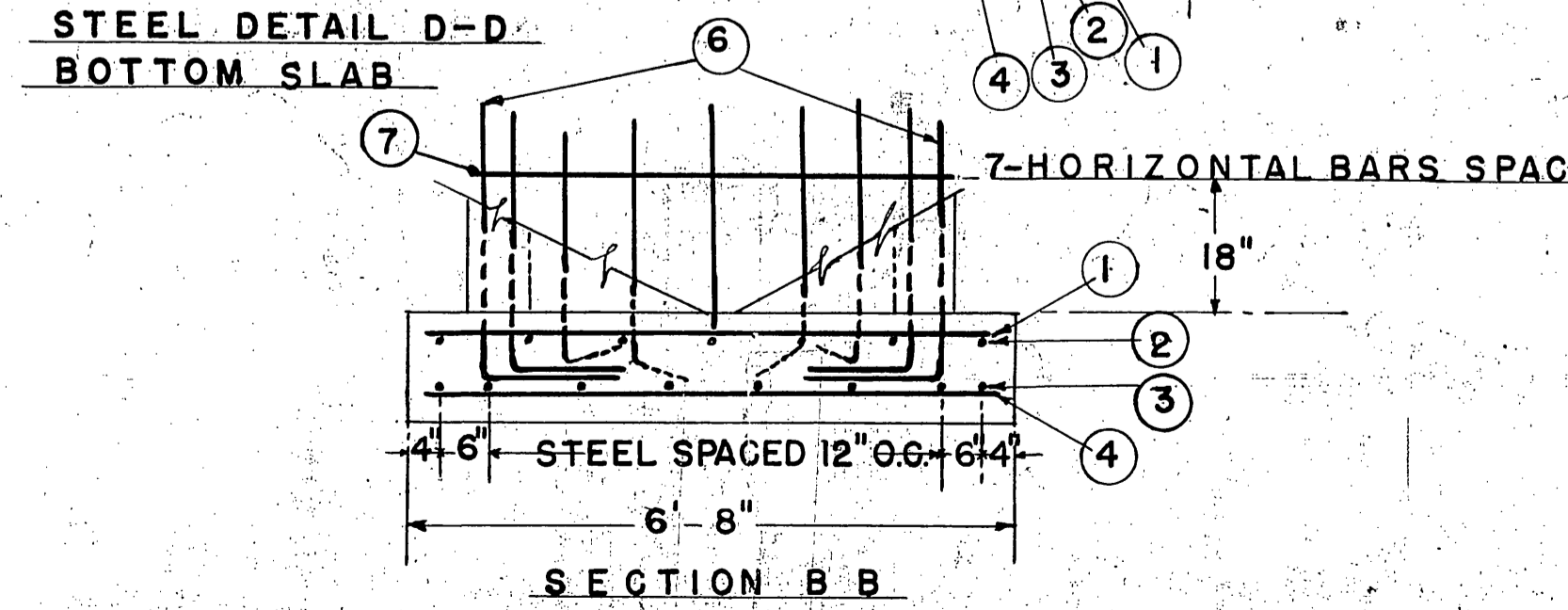
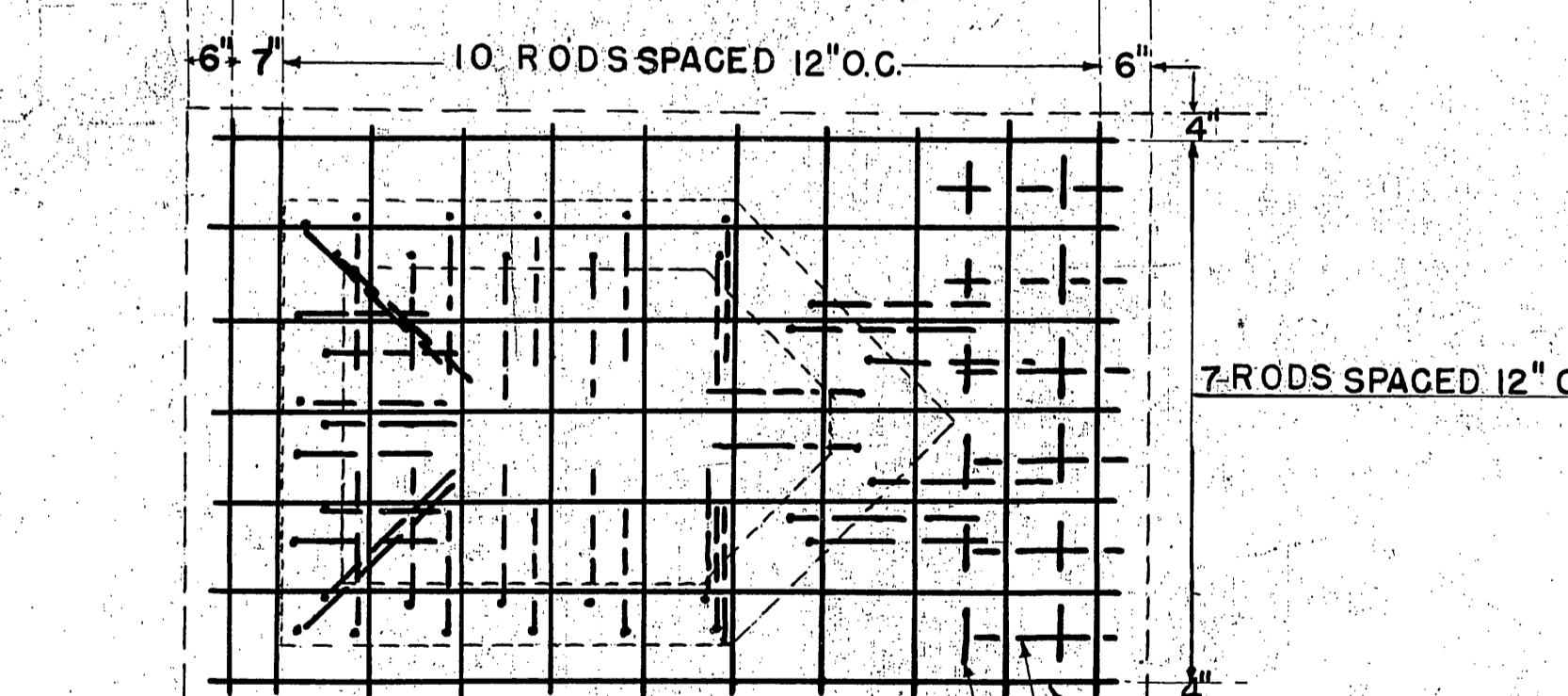
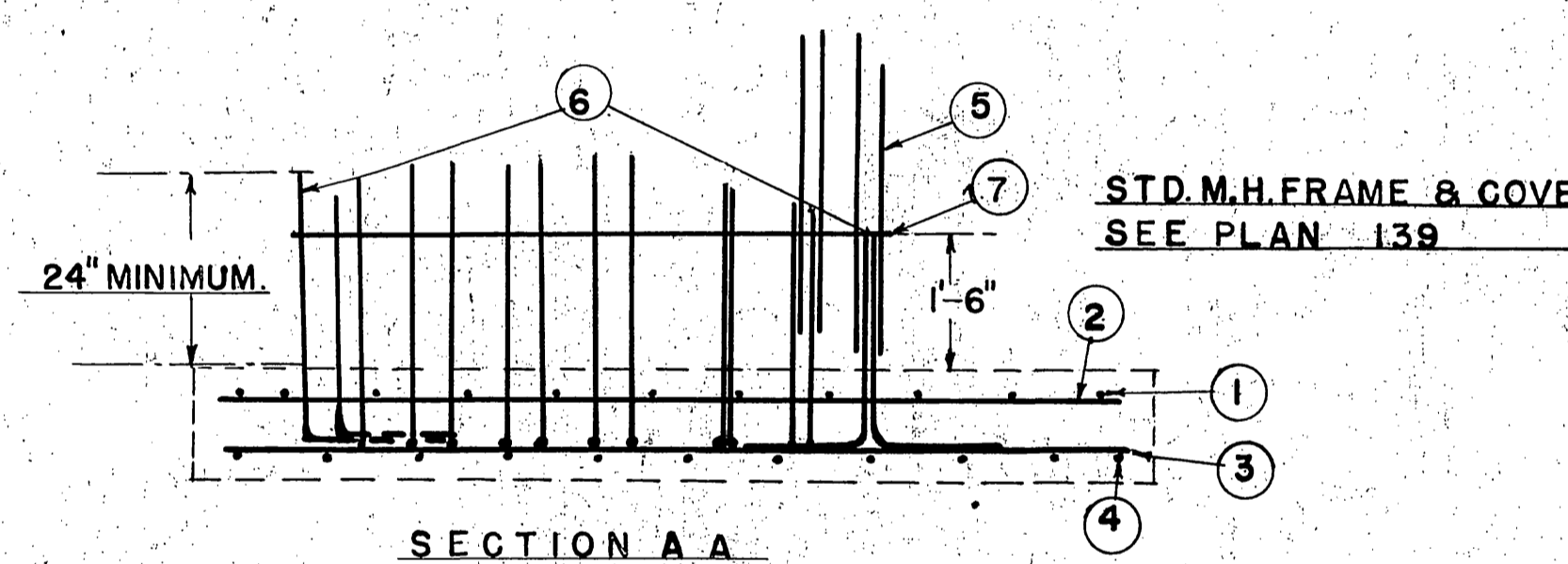
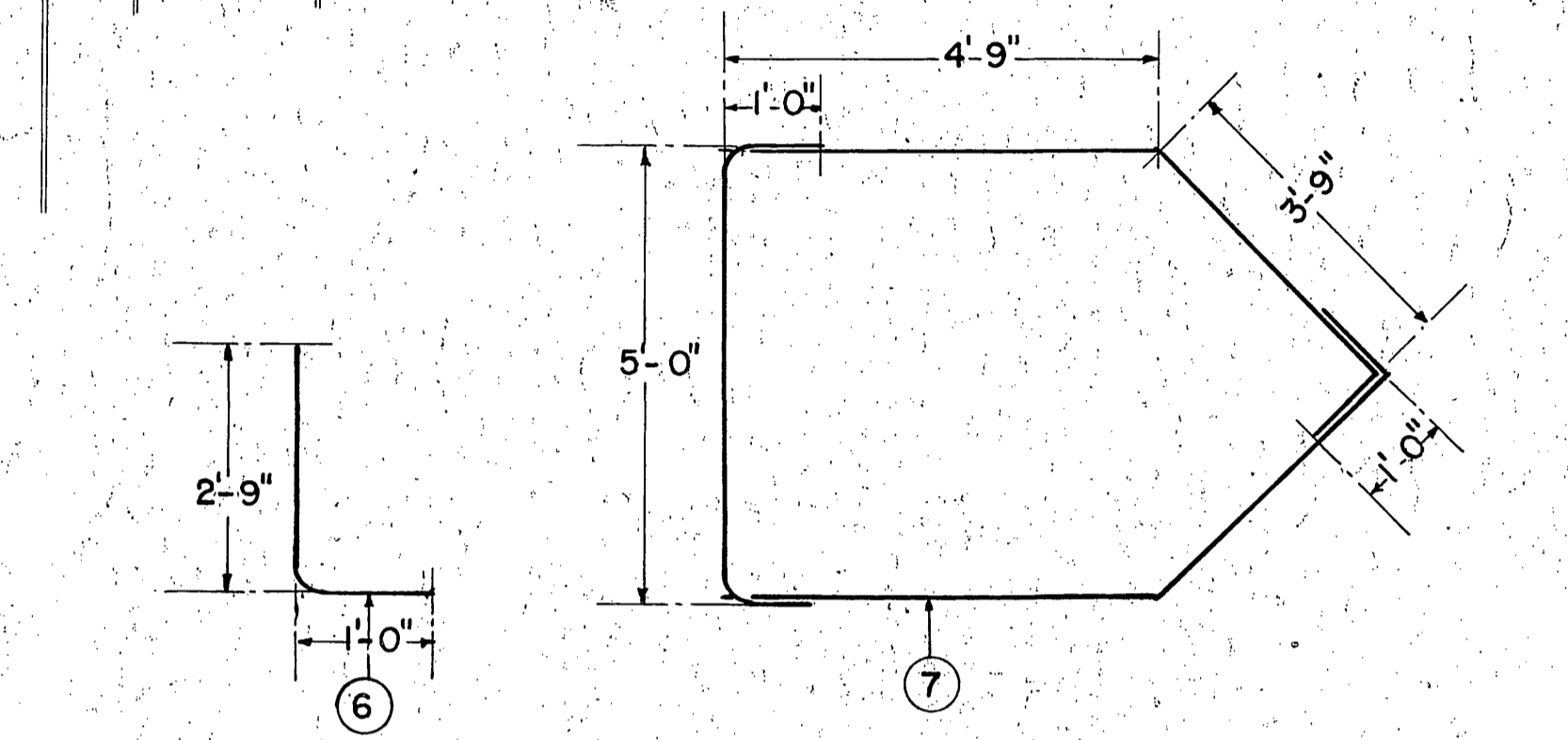
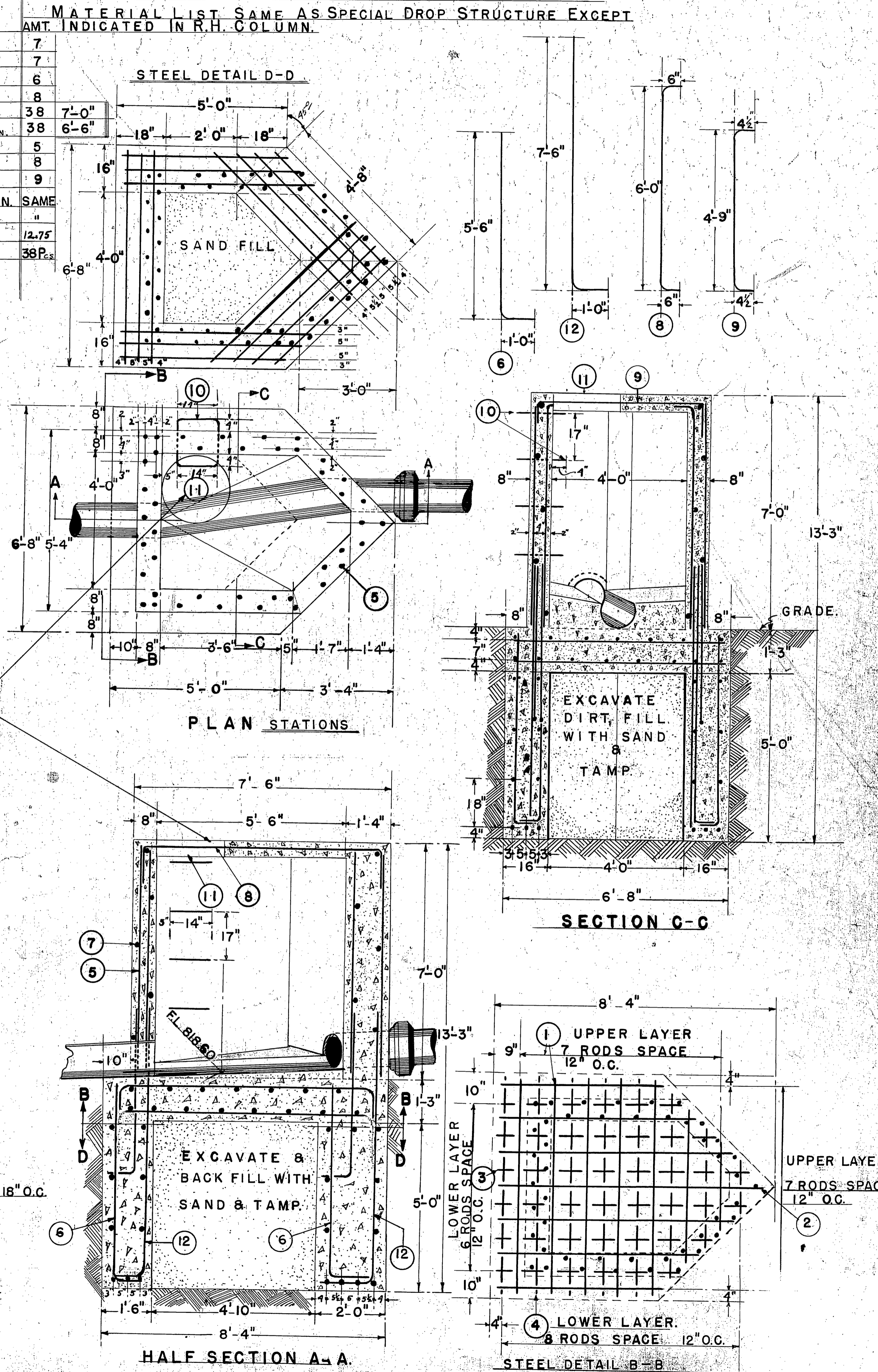
Registered Civil Engineer No. 3011



SPECIAL DROP STRUCTURE.

SPECIAL STRUCTURE.

MATERIAL LIST			MATERIAL LIST SAME AS SPECIAL DROP STRUCTURE EXCEPT AMT. INDICATED IN R.H. COLUMN.		
NO	QUANTITY	DESCRIPTION			
1	11 PCS.	3/4" X 6'-4" PER LIN.FT. 1.50 LBS. INTERMEDIATE Q.	STRAIGHT BARS.	7	
2	7 "	3/4" X 10'-3" " " " " " " " "	" " " "	7	
3	8 "	3/4" X 10'-3" " " " " " " " "	" " " "	6	
4	11 "	3/4" X 6'-4" " " " " " " " "	" " " "	8	
5	38 "	1/2" X 11'-6" " " " " " " " "	0.668	38	7'-0"
6	38 "	1/2" X 3'-9" " " " " " " " "	"	38	6'-6"
7	7 "	1/2" X 26'-0" " " " " " " " "	"	5	
8	5 "	1/2" X 7'-0" " " " " " " " "	STRAIGHT BARS	8	
9	6 "	1/2" X 5'-6" " " " " " " " "	"	9	
10	11 "	MANHOLE STEPS SHALL BE 3/4" GALV. IRON DIMENSION AS SHOWN.			SAME
11	1	USE STANDARD TYPE 'A' MANHOLE FRAME & COVER.			
10.10	Cu Yds	1:2:4 CONCRETE			12.75
12		1/2" X 8'-6" PER LIN.FT. 0.65 LBS. INTERMEDIATE STEEL FORM AS SHOWN.			38 Pcs.



STD. M.H. FRAME & COVER
SEE PLAN #139

STD. M.H. FRAME & COVER
SEE PLAN #139

VICTORIA HILL TRUNK LINE
SANITARY SEWER
RIVERSIDE - CALIFORNIA
Approved *m. H. Irvine*
CITY ENGINEER
Registered Civil Engineer No 5011

RIVERSIDE



CALIFORNIA

PUBLIC WORKS DEPARTMENT

VICTORIA TRUNK RELIEF SEWER

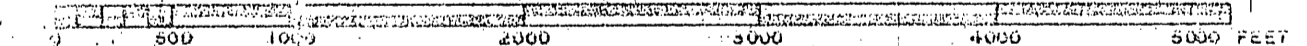
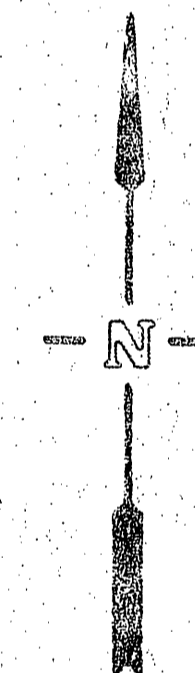
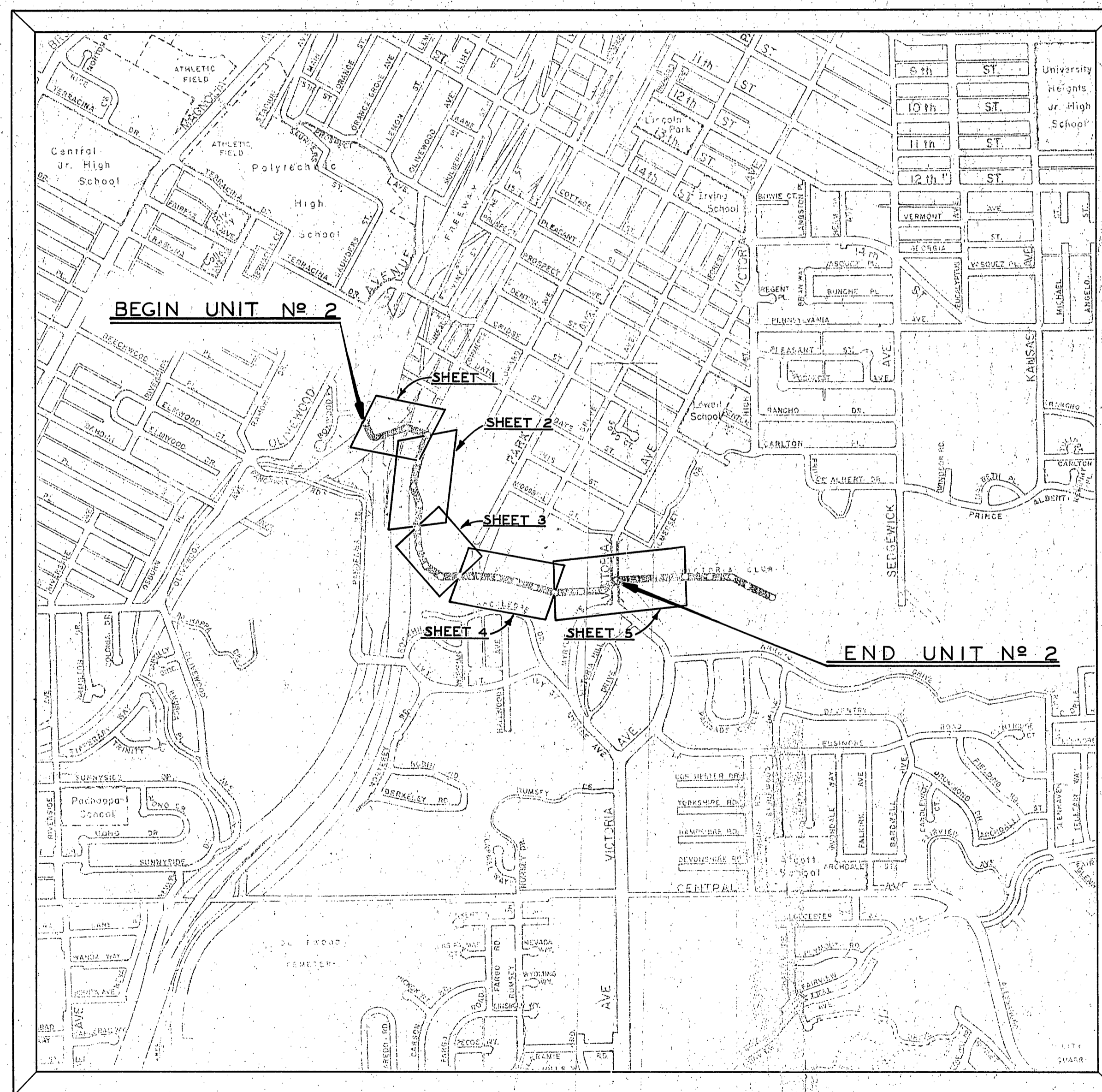
UNIT No 2

INDEX

S-625

SHEETS 1-5 SANITARY SEWER PLAN & PROFILE

SHEET 6 DETAILS OF EXISTING MANHOLES No 3 & 4



PROJECT LOCATION MAP

LENGTH OF PROJECT 4093 FEET — .78 MILES

RIVERSIDE



CALIFORNIA

PUBLIC WORKS DEPARTMENT

VICTORIA TRUNK RELIEF SEWER

UNIT No. 2

INDEX

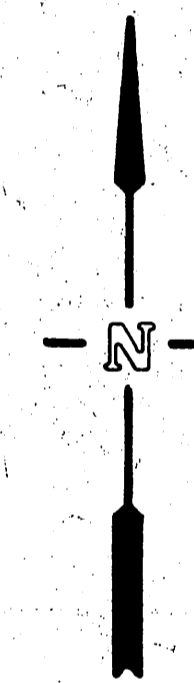
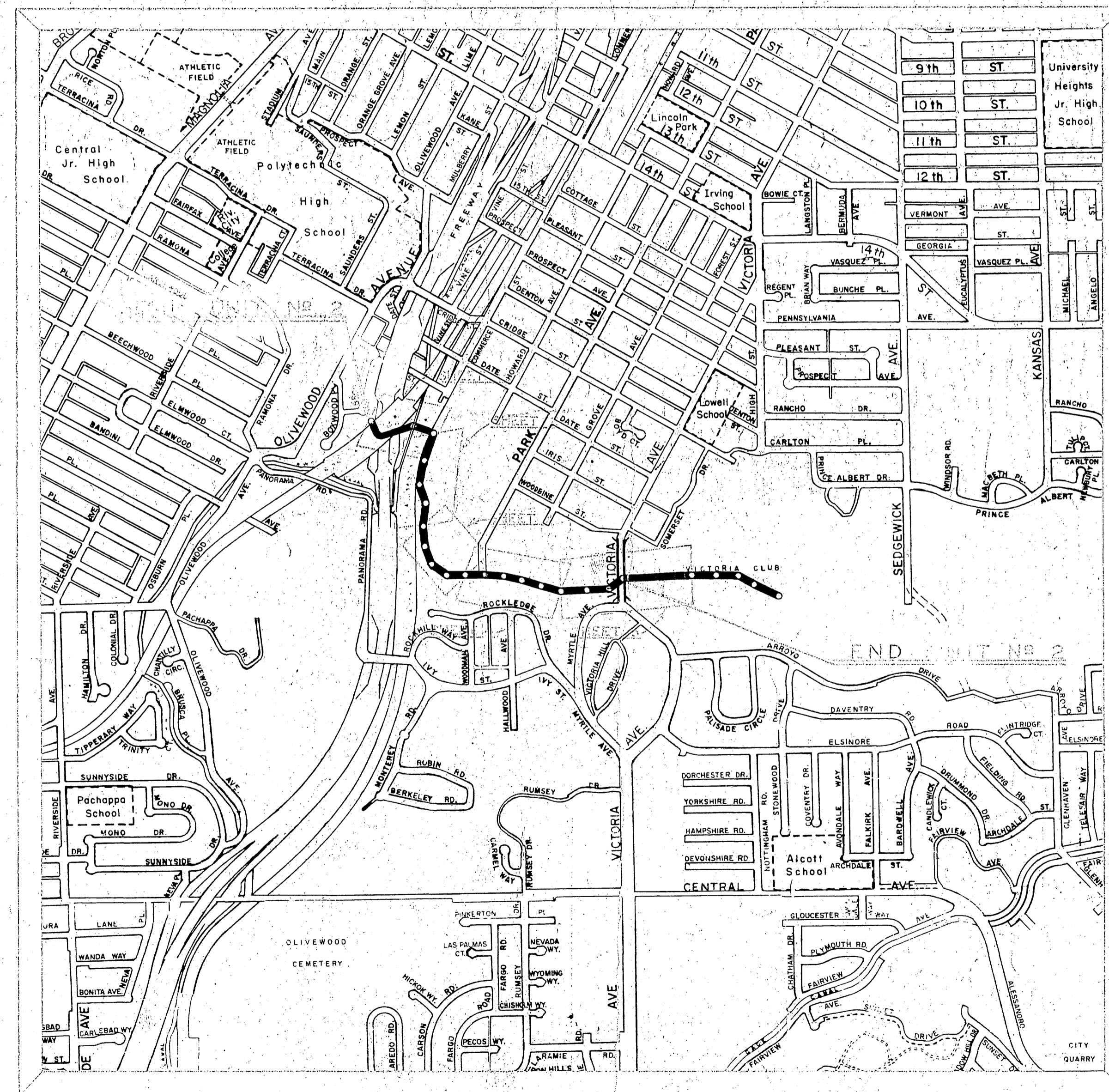
S-625

SHEETS 1-5

SANITARY SEWER
PLAN & PROFILE

SHEET 6

DETAILS OF
EXISTING MANHOLES
No. 3 & 4



PROJECT LOCATION MAP

LENGTH OF PROJECT 4093 FEET — .76 MILES