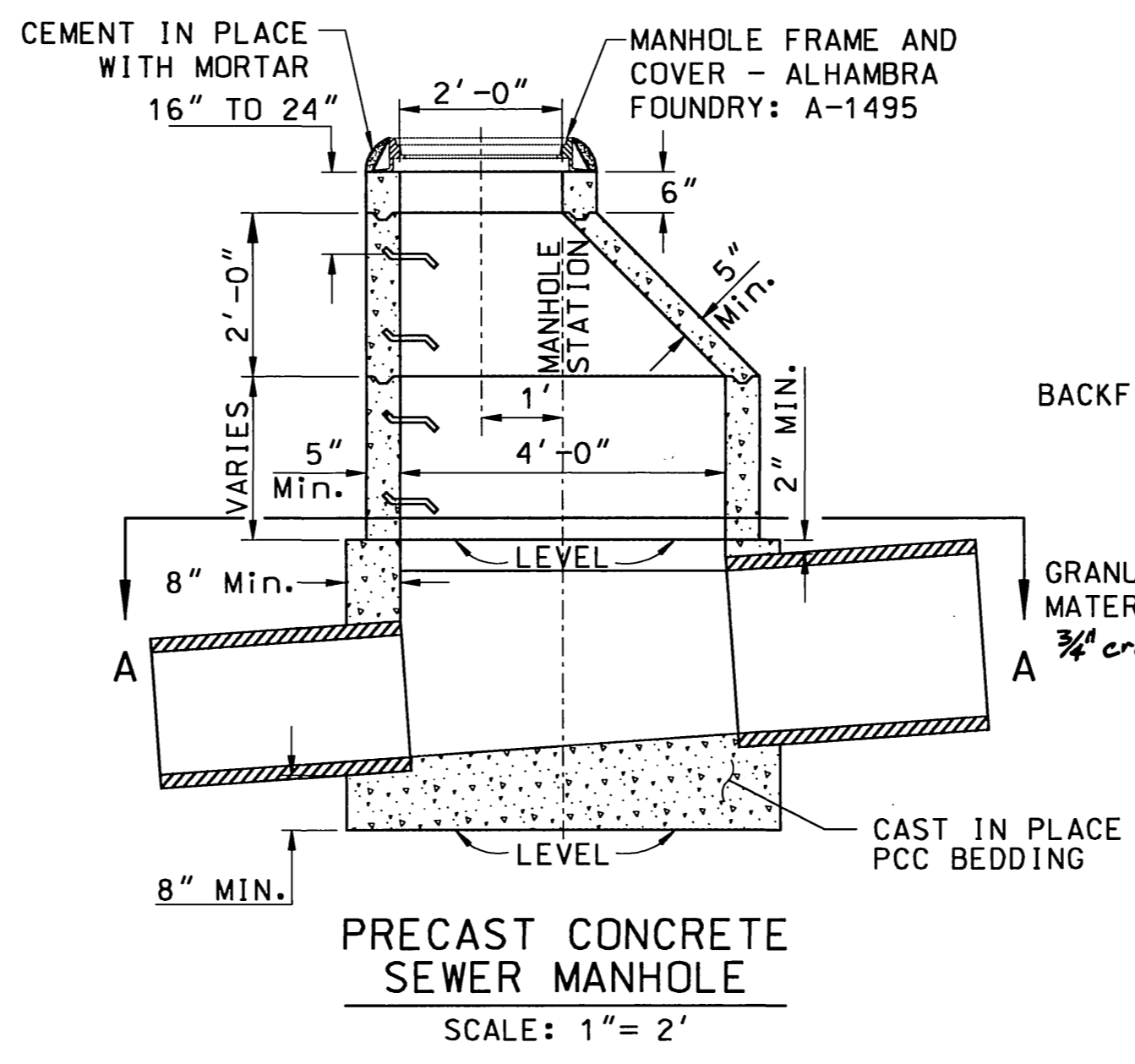
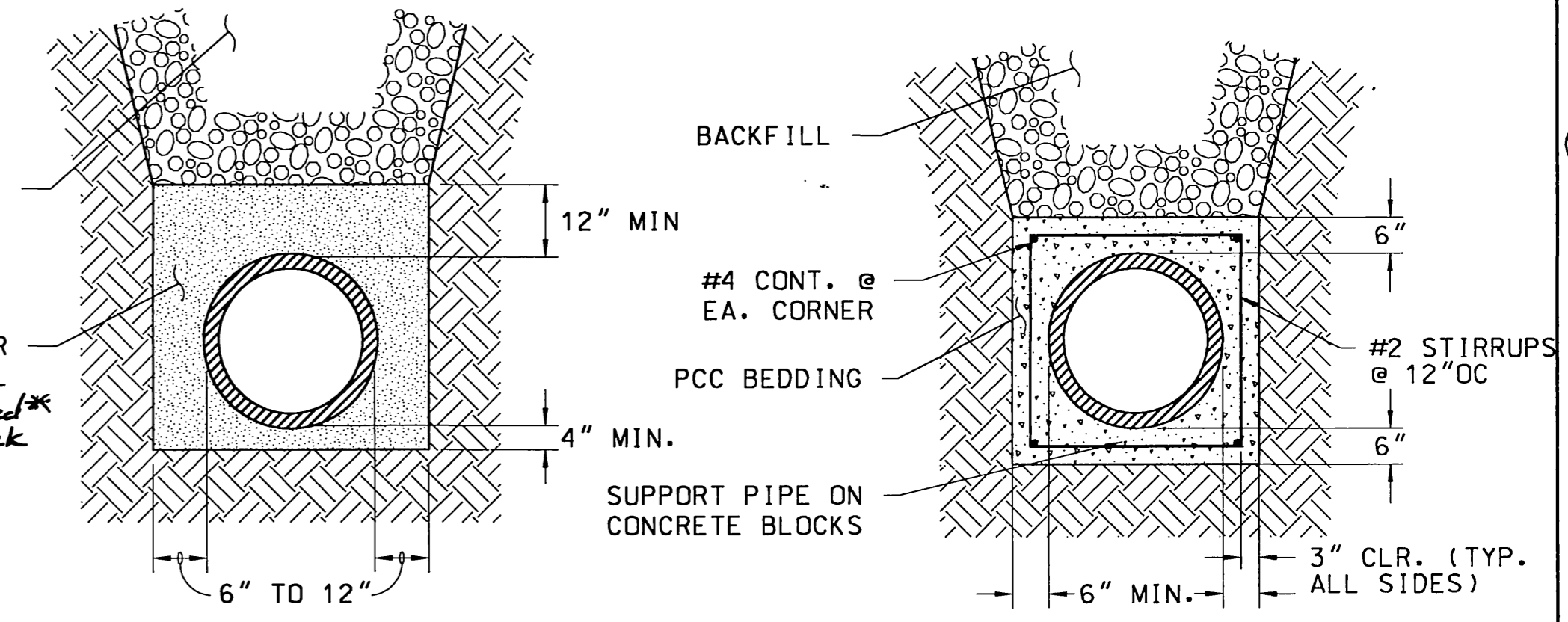


PROFILE  
SCALE: 1" = 20' H  
1" = 5' V

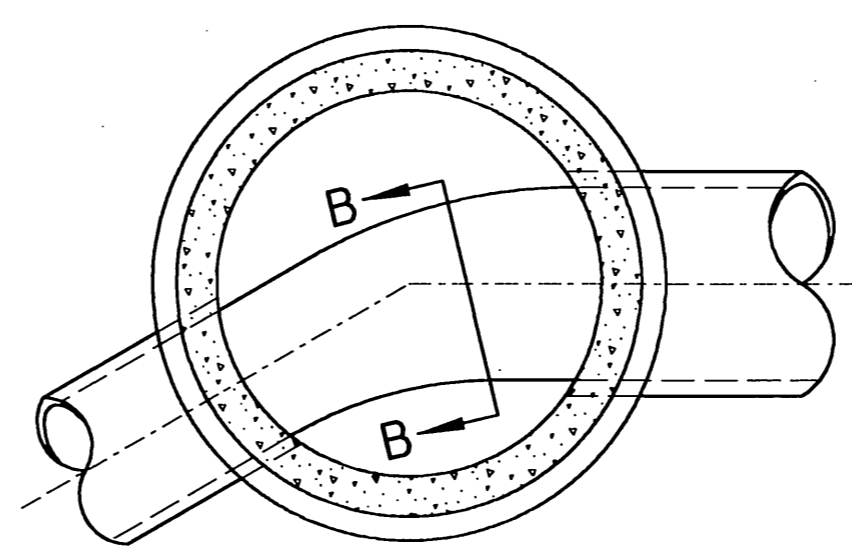


PRECAST CONCRETE SEWER MANHOLE  
SCALE: 1" = 2'

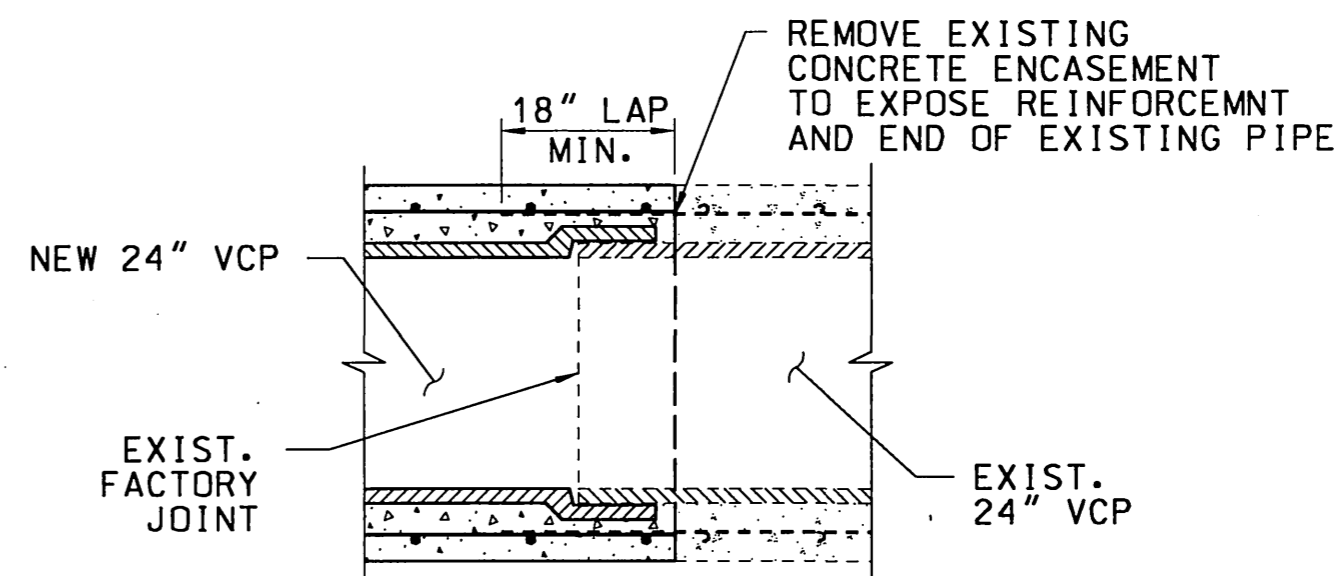


CASE III\* PIPE BEDDING  
SCALE: 1" = 2'

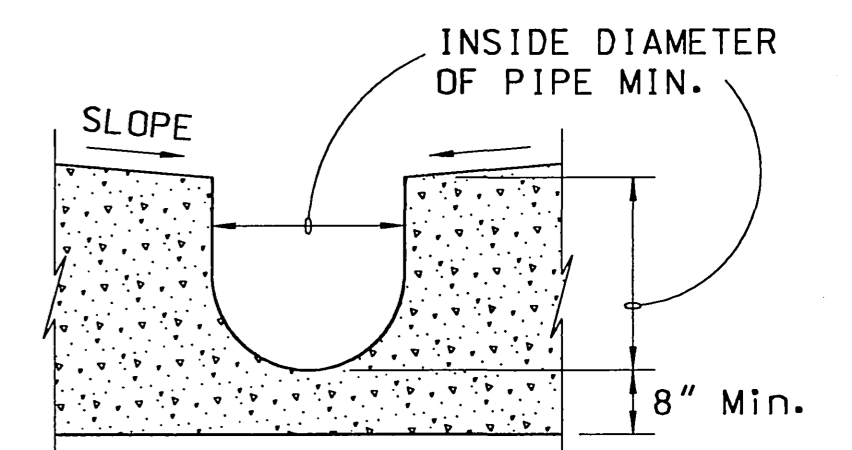
CASE IV PIPE BEDDING  
SCALE: 1" = 2'



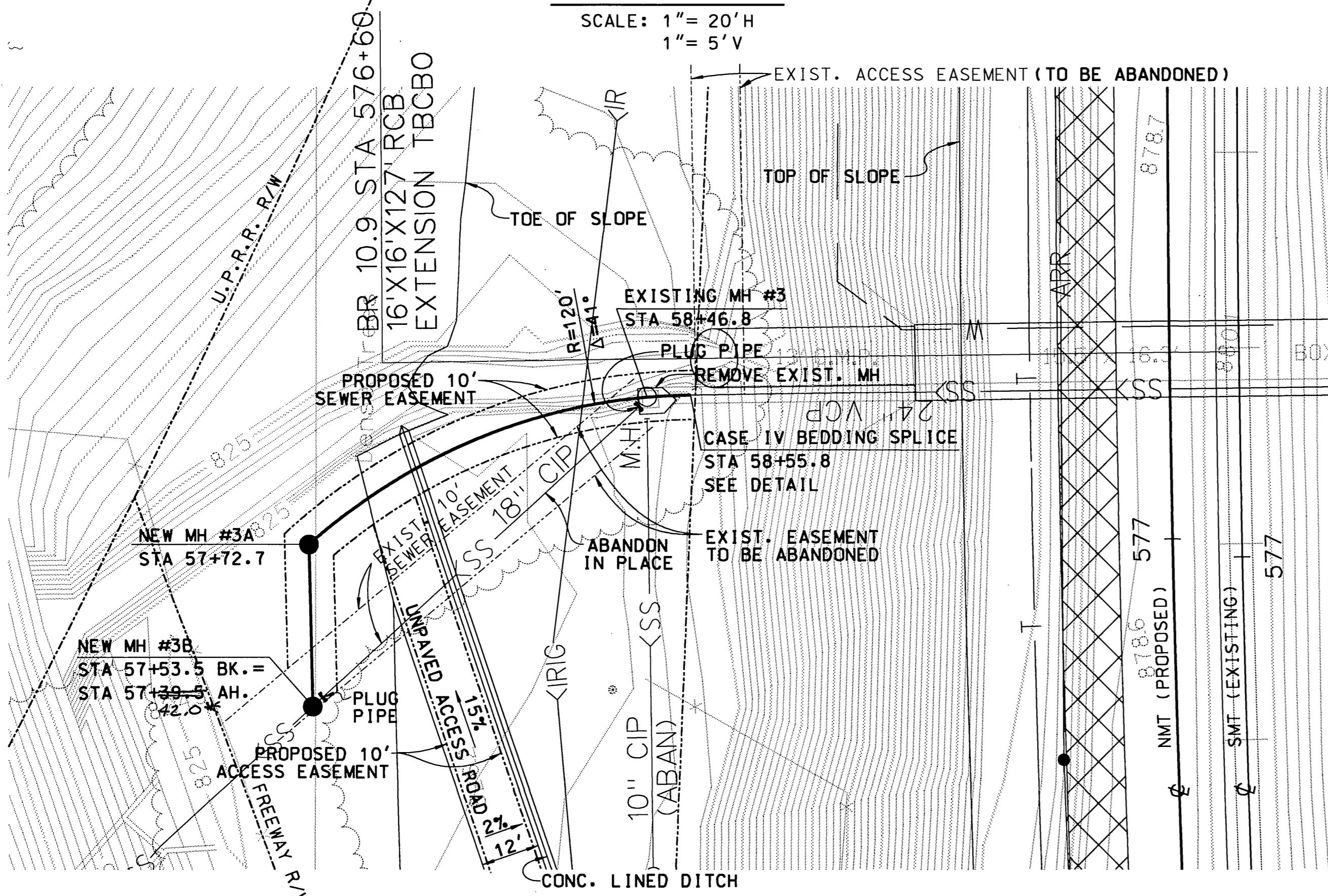
SECTION A-A  
SCALE: 1" = 2'



CASE IV PIPE BEDDING SPLICE  
N.T.S.



SECTION B-B  
SCALE: 1" = 2'



PLAN  
SCALE: 1" = 20'

PIPE BEDDING NOTES:

- WHERE GROUND WATER IS ENCOUNTERED IN THE TRENCH, THE CONTRACTOR SHALL, AT THE DIRECTION OF THE ENGINEER, EXCAVATE TO A DEPTH OF 6-INCHES BELOW THE PROPOSED PIPE AND PLACE A BEDDING OF 3/4-INCH CRUSHED ROCK OR CRUSHED SLAG. IF THE GROUND WATER IS MORE THAN 3-INCHES ABOVE FLOW LINE OF THE PIPE, THE CONTRACTOR SHALL CONSTRUCT CONCRETE BARRIERS 3-FOOT WIDE, IN 25-FOOT INTERVALS, UNDER THE PIPE TO PREVENT THE FLOW OF WATER THROUGH THE CRUSHED BEDDING MATERIAL.
- TRENCH WALLS SHALL BE VERTICAL WITHIN THE BEDDING AREA.

MANHOLE NOTES:

- ALL JOINTS SHALL BE SET IN PORTLAND CEMENT MORTAR AND SHALL BE SACK FINISHED.
- RINGS AND CONES SHALL BE REINFORCED WITH #4 ROUND STEEL WOUND SPIRALLY ON 4" CENTERS.
- VERTICAL WALL OF CONE SHALL BE ON DOWNSTREAM SIDE OF MANHOLE.
- STEPS SHALL BE 14" WIDE STIRRUP TYPE SAFETY STEPS. THE STEPS OR SOCKETS SHALL BE CAST IN PLACE AT TIME OF MANUFACTURE. STEPS SHALL BE SPACED A MAXIMUM 16" C.C. MATERIAL FOR STEPS SHALL BE 3/4" GALVANIZED STEEL, ASTM A-124; OR 1/2" COLD DRAWN STEEL, ASTM A-82, COATED WITH POLYPROPYLENE, ASTM 2146.
- FIRST PIPE JOINT SHALL BE NO MORE THAN 1' FROM MANHOLE.
- COVER SHALL HAVE LETTER S IN CENTER.
- PRECAST CONCRETE MEMBERS SHALL BE 4000 PSI STRENGTH CONCRETE WITH AGGREGATE SIZE 7.

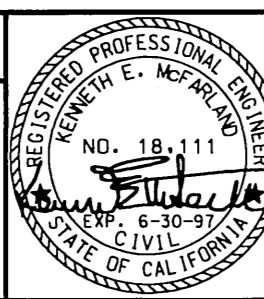
GENERAL NOTES:

- FOR SEWER LINE LOCATION SEE DWG. 4169D-C6502
- DIVERSION DURING CONSTRUCTION, CLEANING AND MAINTENANCE OF SEWER LINE SHALL BE CONTRACTORS RESPONSABILITY.
- ALL REMOVED CONCRETE, PIPE AND OTHER MATERIALS SHALL BE DISPOSED OF AS DIRECTED BY THE ENGINEER.
- ALL OBSTRUCTIONS REMOVED DURING CONSTRUCTION SHALL BE RESTORED OR REPLACED IN KIND AS DIRECTED BY THE ENGINEER.
- ALL CONCRETE SHALL BE 4000 PSI STRENGTH CONCRETE WITH AGGREGATE SIZE 67 UNLESS OTHERWISE NOTED.
- AT&SF SHALL GRANT THE CITY OF RIVERSIDE A PERMANENT ACCESS EASEMENT ALONG THE ACCESS ROAD AND A PERMANENT SEWER EASEMENT ALONG THE RELOCATED SEWER LINE.
- STATIONING ALONG SEWER LINE CONFORMS TO STATIONING AS DEFINED ON CITY OF RIVERSIDE DEPARTMENT OF PUBLIC WORKS DRAWING S-625.



\*AS BUILT 1/4/95

CITY OF RIVERSIDE, CALIFORNIA  
DEPARTMENT OF PUBLIC WORKS  
APPROVED: *[Signature]* DATE: 10/4/94  
DIRECTOR OF PUBLIC WORKS



| NO. | DATE    | REVISIONS                 | BY  | CHKD. | APP'D | DATE |
|-----|---------|---------------------------|-----|-------|-------|------|
| 1   | 9-12-94 | REVISED PER CITY'S REVIEW | MGM | KEM   |       |      |
| 0   | 7-18-94 | SANITARY SEWER EXTENSION  | MGM | SD    |       |      |

MORRISON KNUDSEN CORPORATION  
TRANSPORTATION AND WATER RESOURCES GROUP  
180 HOWARD STREET, SAN FRANCISCO, CALIFORNIA 94105

THE ATCHISON, TOPEKA AND SANTA FE RAILWAY COMPANY  
APPROVED: *[Signature]*

SOUTHERN CALIFORNIA COMMUTER PROJECT  
WEST RIVERSIDE - ARLINGTON  
SANITARY SEWER SMT STA 576+65  
PLAN, PROFILE AND DETAILS

DWG. NO. 4169D-C6302  
SHEET 1 OF 2 REV 1  
CONTRACT PACKAGE CP6

INDEXED 11-14-94

4

3

2

1

D

D

C

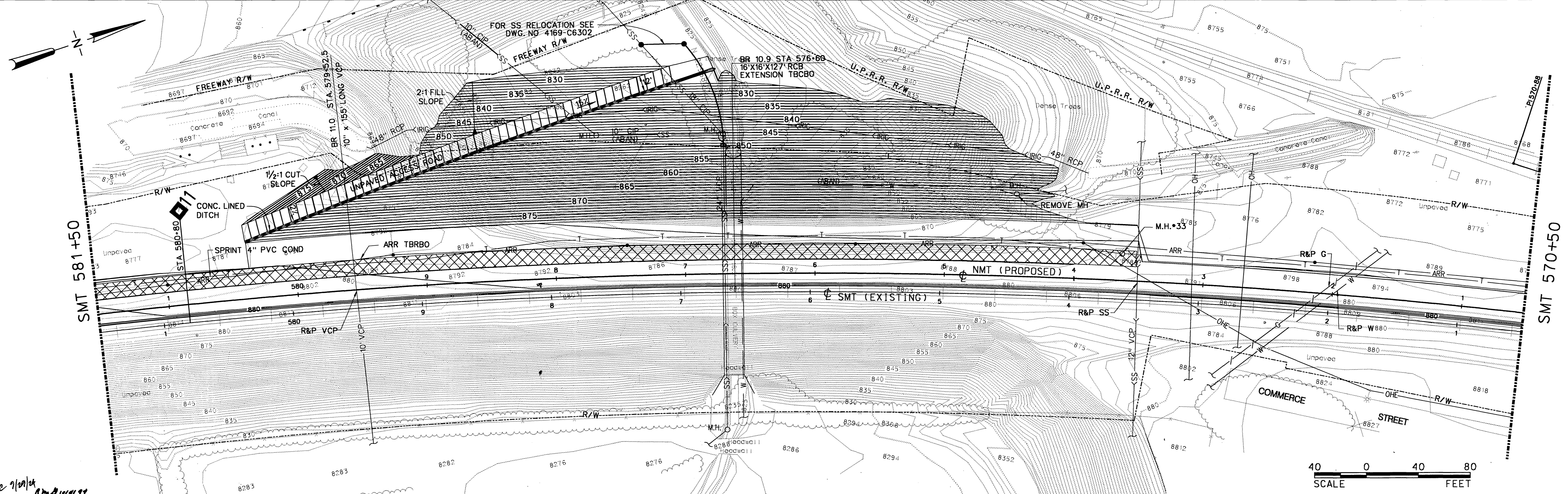
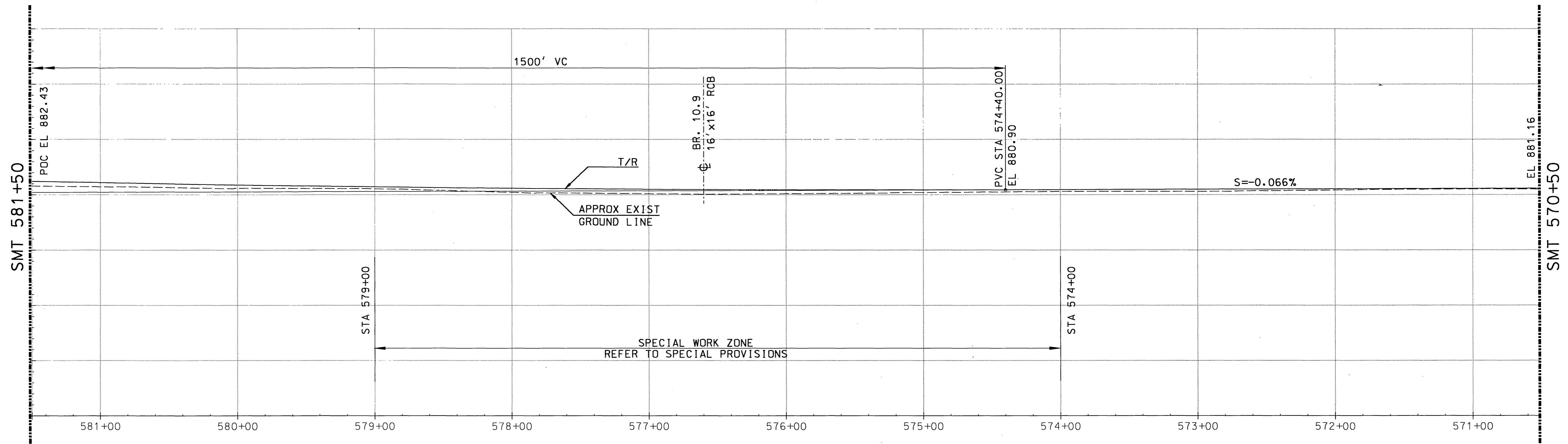
C

B

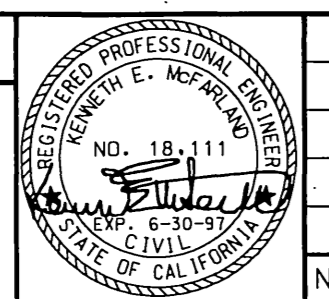
B

A

A



APPROVED: *Barry Bell* DATE: 10/4/94  
 DIRECTOR OF PUBLIC WORKS



|     |         |                   |     |       |       |
|-----|---------|-------------------|-----|-------|-------|
| NO. | DATE    | REVISIONS         | BY  | CHK'D | APP'D |
| 0   | 9-12-94 | ISSUED FOR REVIEW | MGM | KEM   |       |

**MORRISON KNUDSEN CORPORATION**  
 TRANSPORTATION AND WATER RESOURCES GROUP  
 180 HOWARD STREET, SAN FRANCISCO, CALIFORNIA 94105

**THE ATCHISON, TOPEKA AND SANTA FE RAILWAY COMPANY**

**SOUTHERN CALIFORNIA COMMUTER PROJECT**  
 WEST RIVERSIDE - ARLINGTON  
 GRADING AND DRAINAGE FOR  
 SANITARY SEWER RELOCATION  
 570+50 - 581+50

DWG. NO. 4169D-C6303  
 SHEET 2 OF 2 REV 0  
 CONTRACT PACKAGE CP6