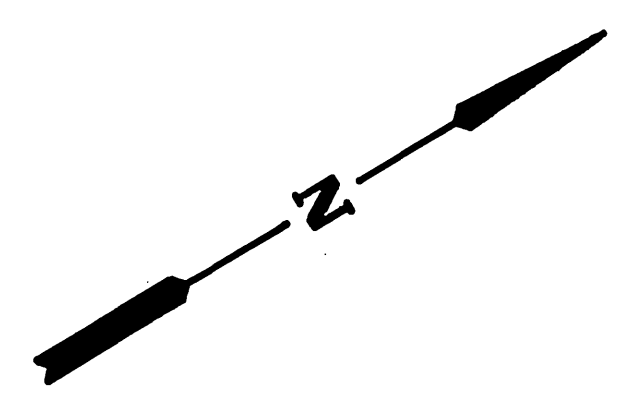
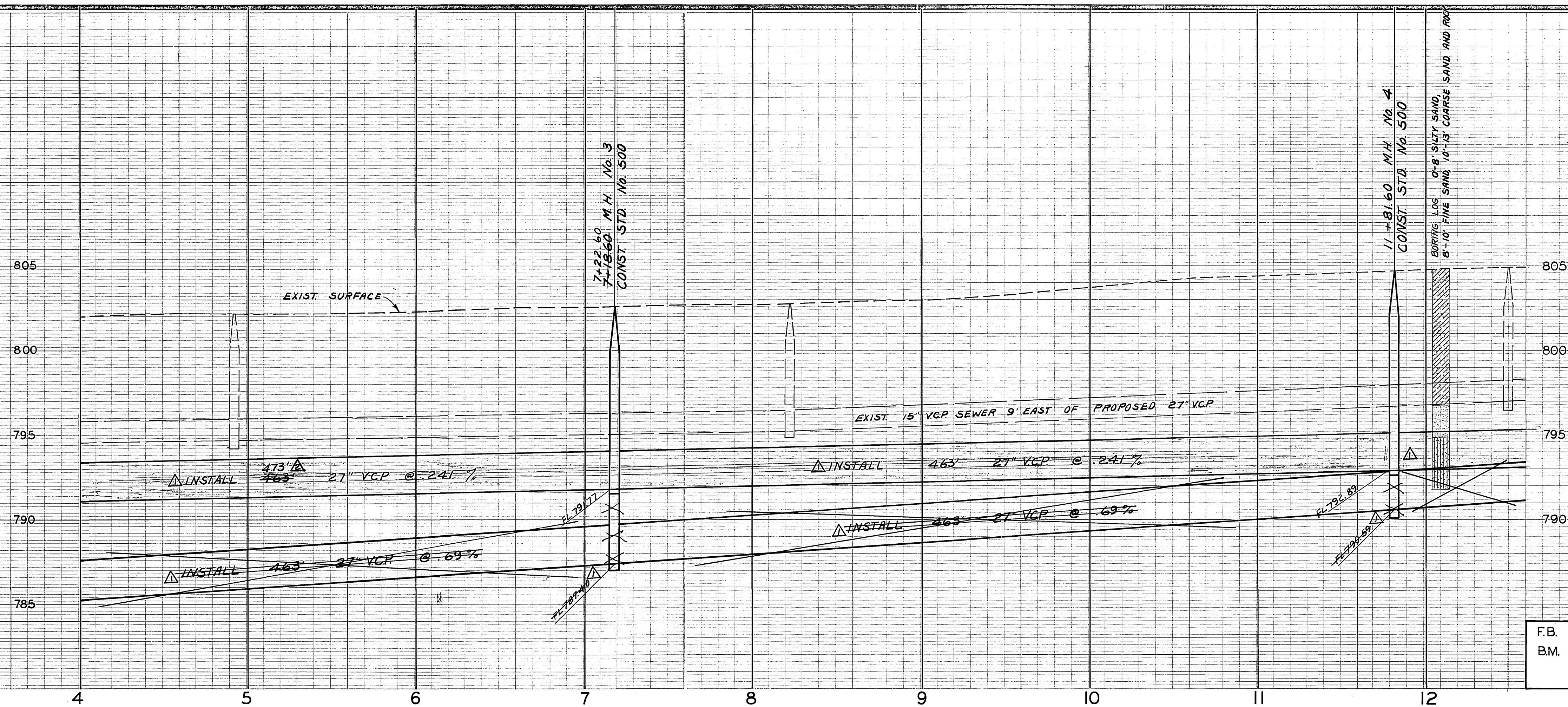


- GENERAL NOTES**
1. AFTER COMPLETION OF PROJECT, PROPOSED TRUNK WILL BE FLOWING UNDER PRESSURE BETWEEN STATION 0+00 AND STATION 2+35.65 (M.H. No. 2). PROPOSED PIPE SHALL BE INSTALLED THROUGH MANHOLES No. 1, 2, 3, 4. THESE MANHOLES WILL REMAIN DRY.
 2. PAVEMENT REPLACEMENT AND NEW PAVING SHALL BE 3" AC OVER 8" CLASS 3 AB. NEW PAVING NOTED BY [Symbol].
 3. ALL OBSTRUCTIONS REMOVED DURING CONSTRUCTION SHALL BE REPLACED IN KIND AFTER COMPLETION. NO EXTRA PAY ITEM.
 4. NUMBER AND LOCATION OF EXISTING SEWER LATERALS ARE APPROXIMATE. ANY LATERALS DISCONNECTED DURING CONSTRUCTION SHALL BE RECONNECTED TO EXISTING OR PROPOSED SEWER. PAYMENT SHALL BE IN ACCORDANCE WITH THE UNIT PRICE BID FOR CONNECTING SEWER LATERALS, ITEM No. 10. THOSE KNOWN TO BE IN CONFLICT WITH PROPOSED SEWER NOTED BY [Symbol].
 5. EXISTING CONCRETE SLAB AND CROSS-GUTTER TO BE CROSSED DURING TRENCHING NOTED BY [Symbol].
 6. ALL VCP TO BE BEDDED PER STD. No. 452 CASE 1 EXCEPT WHERE NOTED BY [Symbol].

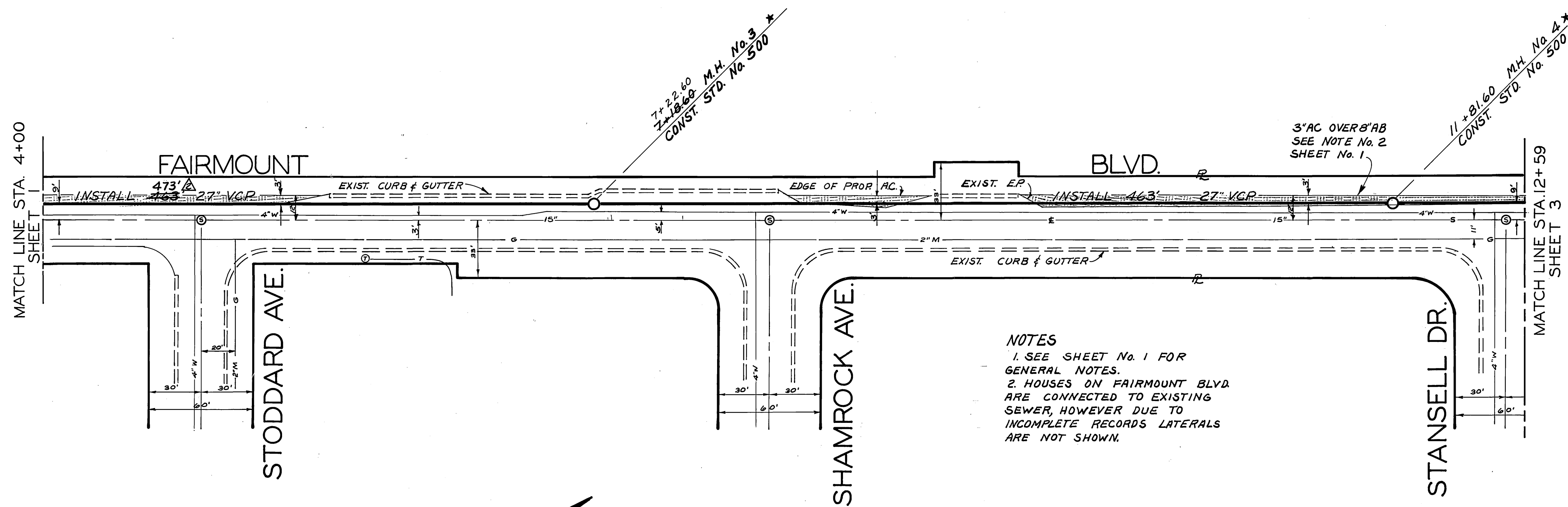


* AS BUILT 7-1-66 gmar H.S.

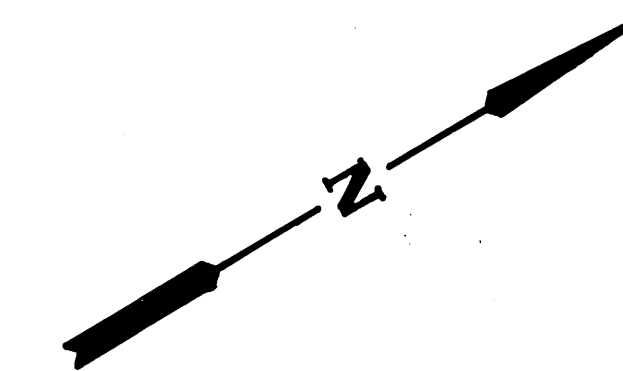
PER CHANGE ORDER No. 1 PER CHANGE ORDER No. 2 PER CHANGE ORDER No. 3	CITY OF RIVERSIDE, CALIFORNIA DEPARTMENT OF PUBLIC WORKS	FAIRMOUNT TRUNK SEWER POMONA FREEWAY TO PALMYRITA	PROJECT NO. 5082 S-626 SHEET 1 OF 10
DESIGNED BY [Signature] DRAWN BY [Signature] CHECKED BY [Signature]	APPROVED BY [Signature] DATE [Date] OFFICE ENGINEER PARK DEPARTMENT TRAFFIC DIVISION ASSISTANT CITY ENG. [Signature]	APPROVED BY [Signature] DATE [Date] DIRECTOR OF PUBLIC WORKS	HORIZ. SCALE: 1" = 40' VERT. SCALE: 1" = 4' FILE NO.



FB. S-12 8-36
 B.M. CHIS. X IN CENTER OF NE.
 CB. RET. AT STODDARD
 & FAIRMOUNT EL. 802.434

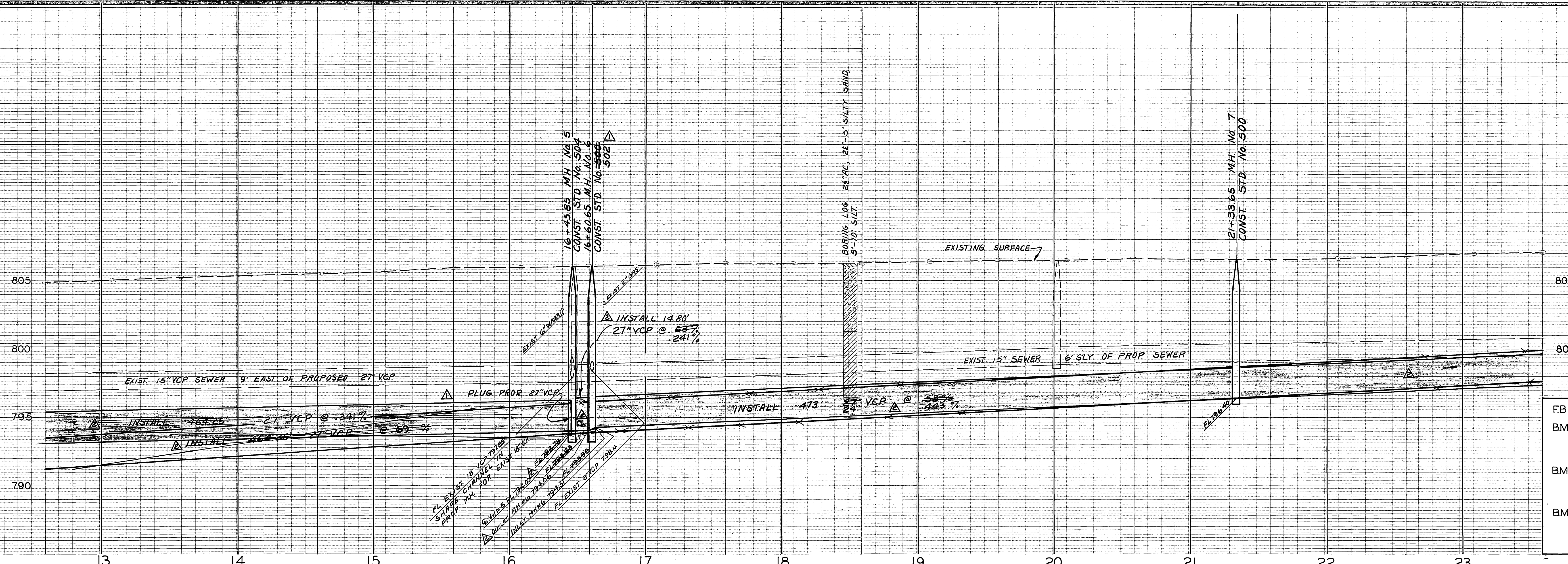


NOTES
 1. SEE SHEET No. 1 FOR
 GENERAL NOTES.
 2. HOUSES ON FAIRMOUNT BLVD.
 ARE CONNECTED TO EXISTING
 SEWER, HOWEVER DUE TO
 INCOMPLETE RECORDS LATERALS
 ARE NOT SHOWN.

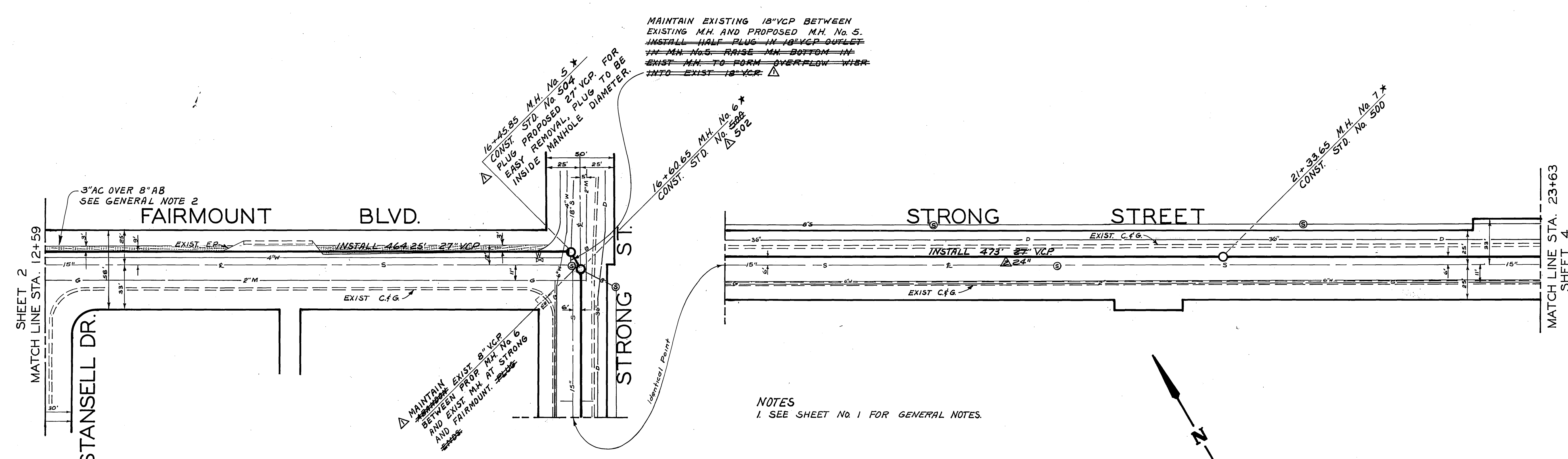


* AS BUILT 7-1-66 gmm/HB

CHANGED GRADE PER CHANGE ORDER No 2 SE <i>[Signature]</i>		CITY OF RIVERSIDE, CALIFORNIA DEPARTMENT OF PUBLIC WORKS		FAIRMOUNT TRUNK SEWER		PROJECT NO. 5082	
PER CHANGE ORDER No 3 <i>[Signature]</i>		APPROVED BY <i>[Signature]</i> DATE <i>[Date]</i> OFFICE ENGINEER PARK DEPARTMENT TRAFFIC DIVISION		APPROVED BY <i>[Signature]</i> DATE <i>[Date]</i> DIRECTOR OF PUBLIC WORKS		S-626 POMONA FREEWAY TO PALMYRITA	
DESIGNED BY <i>[Signature]</i> DRAWN BY <i>[Signature]</i> CHECKED BY <i>[Signature]</i>		ASSISTANT CITY ENG. <i>[Signature]</i> DATE 1-1-66		HORIZ. SCALE: 1" = 40' VERT. SCALE: 1" = 4'		SHEET 2 OF 10 FILE NO.	



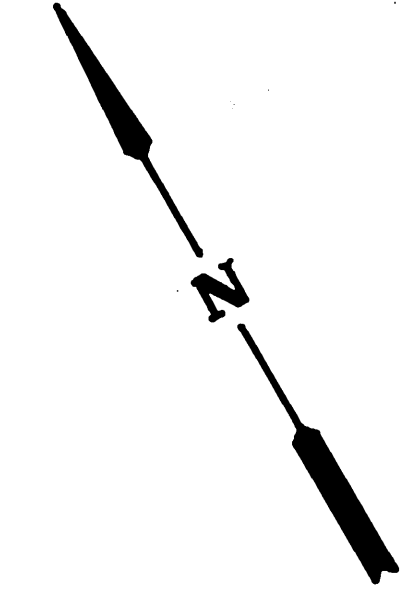
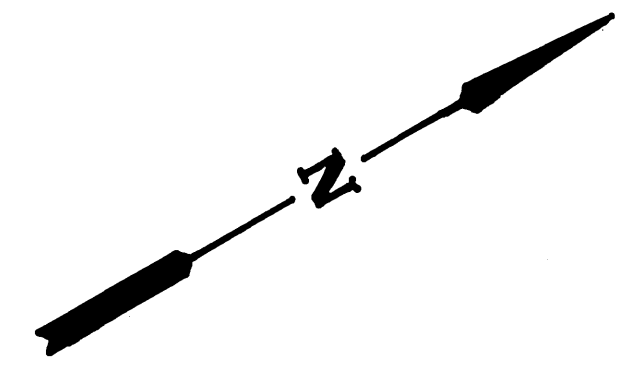
FB. S-12 8-36
 BM. CHIS. X IN CENTER OF NE. CB. RET. AT STANSELL AND FAIRMOUNT EL. 804.764
 BM. S&L IN N. CB. OF STRONG 9' E. OF FAIRMOUNT BLVD. EL. 805.930
 BM. CHIS. X ON N. CB. OF STRONG APPROX. 400' ELY OF FAIRMOUNT BLVD. IN FRONT OF HSE.# 3851 EL. 806.522



NOTES
 1. SEE SHEET No. 1 FOR GENERAL NOTES.

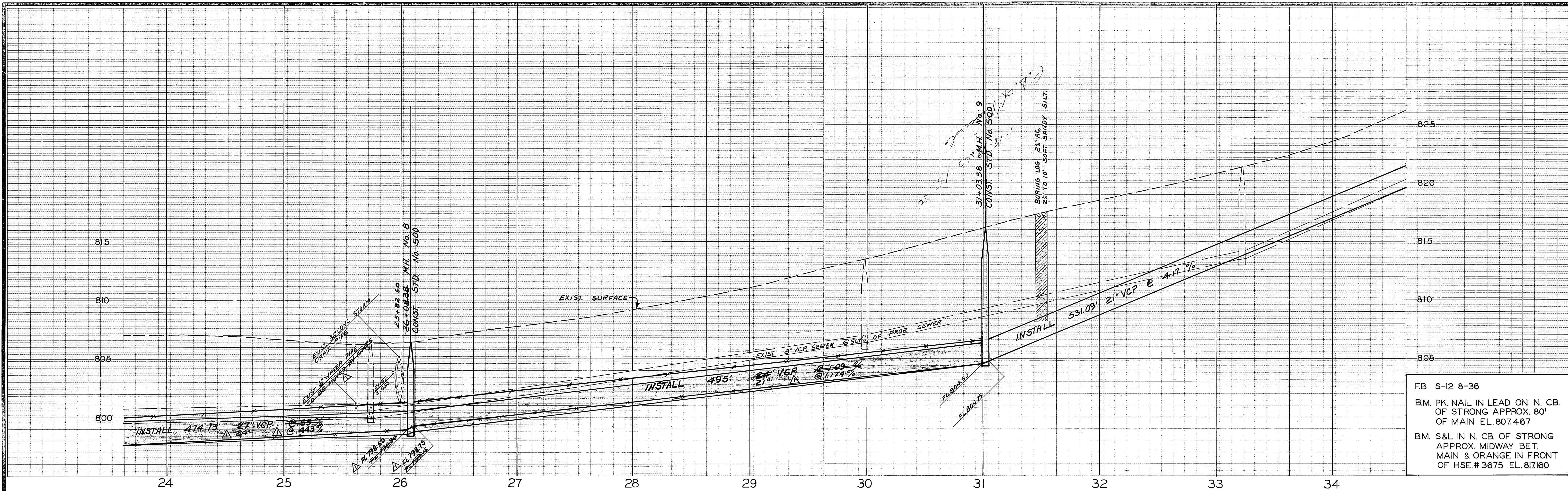
SHEET 2
 MATCH LINE STA. 12+59

MATCH LINE STA. 23+63
 SHEET 4

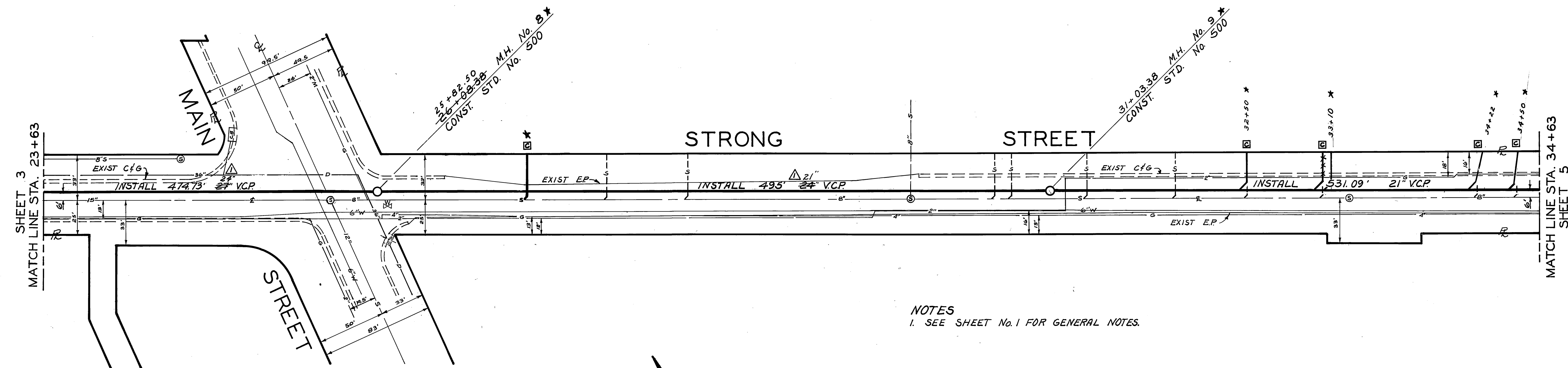


* AS BUILT 7-1-66 gnu/alb

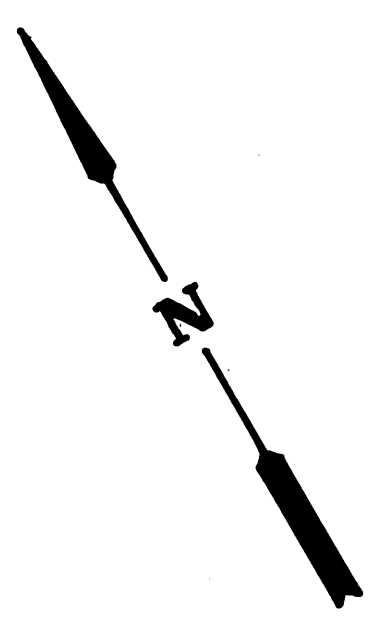
PER CHANGE ORDER No. 1 CHANGED GRADE AND PIPE SIZE PER CHANGE ORDER No. 2		CITY OF RIVERSIDE, CALIFORNIA DEPARTMENT OF PUBLIC WORKS		PROJECT NO. 5082 S-626 SHEET 3 OF 10	
DESIGNED BY: [Signature] DRAWN BY: [Signature] CHECKED BY: [Signature]		APPROVED BY: [Signature] OFFICE ENGINEER PARK DEPARTMENT TRAFFIC DIVISION ASSISTANT CITY ENG.		APPROVED BY: [Signature] DIRECTOR OF PUBLIC WORKS DATE: 1-11-66	
HORIZ. SCALE: 1" = 40' VERT. SCALE: 1" = 4'		FILE NO.		DATE: 1-11-66	



FB S-12 8-36
 B.M. PK. NAIL IN LEAD ON N. CB. OF STRONG APPROX. 80' OF MAIN EL. 807.467
 B.M. S&L IN N. CB. OF STRONG APPROX. MIDWAY BET. MAIN & ORANGE IN FRONT OF HSE. # 3675 EL. 817.160

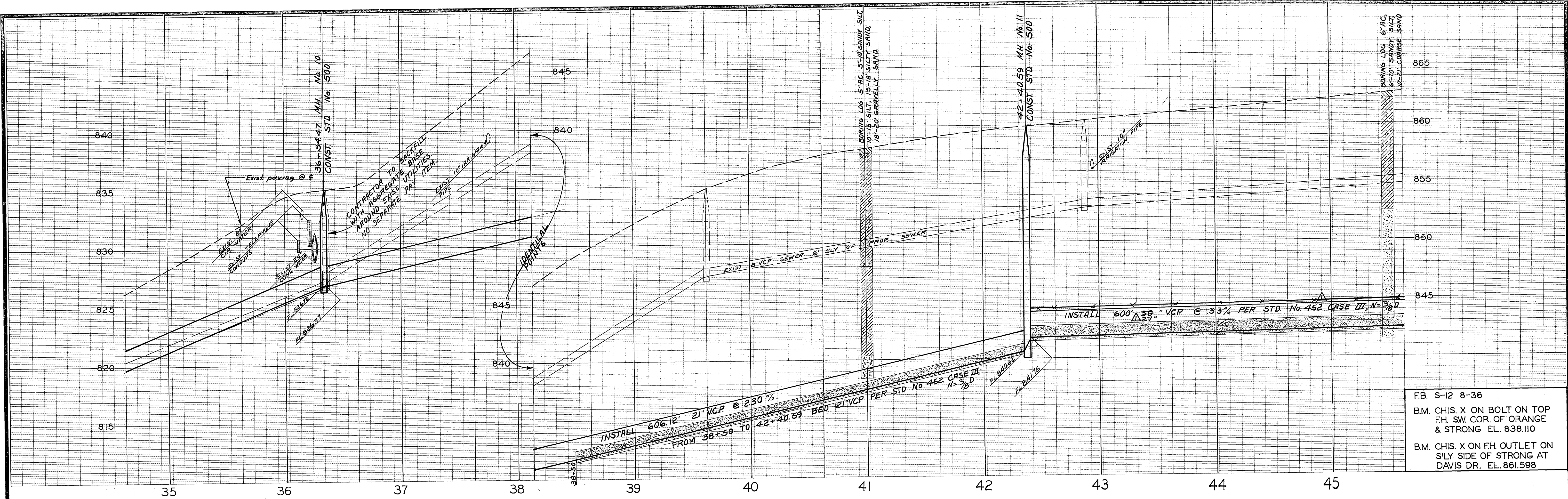


NOTES
 1. SEE SHEET No. 1 FOR GENERAL NOTES.

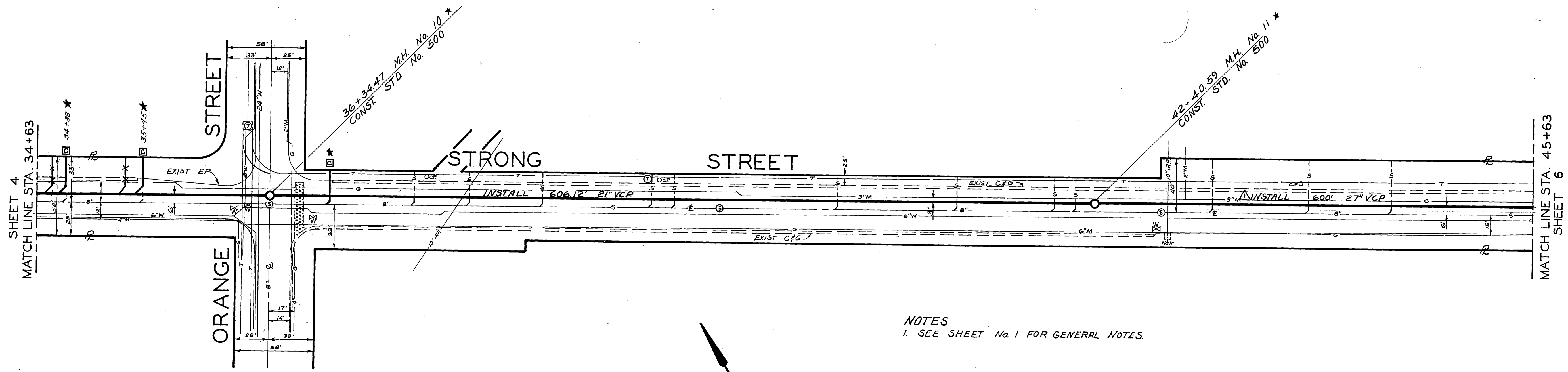


* AS BUILT 7-1-66 JPH/ALB

CHANGED PIPE SIZE AND GRADE PER CHANGE ORDER No. 202 DESIGNED BY <i>CKE</i> DRAWN BY <i>SM</i> CHECKED BY <i>BE</i>		CITY OF RIVERSIDE, CALIFORNIA DEPARTMENT OF PUBLIC WORKS OFFICE ENGINEER: <i>[Signature]</i> PARK DEPARTMENT TRAFFIC DIVISION ASSISTANT CITY ENG. <i>AKD</i> 12/31		APPROVED BY: <i>[Signature]</i> DIRECTOR OF PUBLIC WORKS DATE: 1-11-66		FAIRMOUNT TRUNK SEWER POMONA FREEWAY TO PALMYRITA PROJECT NO. 5082 S-626 SHEET 4 OF 10 FILE NO.	
HORIZ. SCALE: 1" = 40' VERT. SCALE: 1" = 4'							



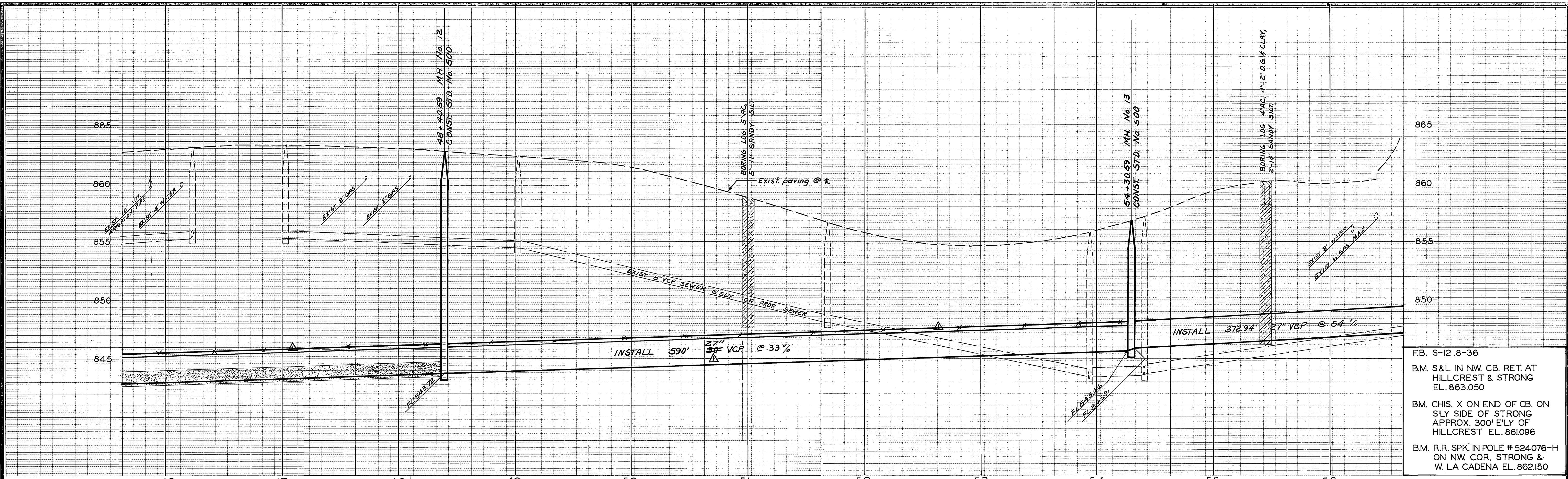
F.B. S-12 8-36
 B.M. CHIS. X ON BOLT ON TOP
 F.H. SW. COR. OF ORANGE
 & STRONG EL. 838.110
 B.M. CHIS. X ON F.H. OUTLET ON
 SLY. SIDE OF STRONG AT
 DAVIS DR. EL. 861.598



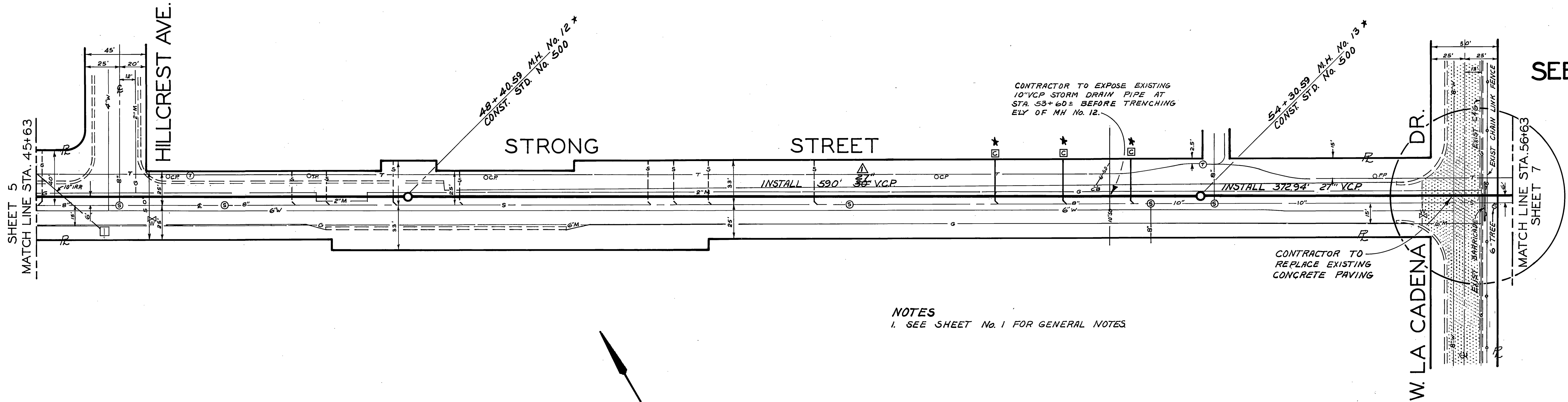
NOTES
 1. SEE SHEET No. 1 FOR GENERAL NOTES.

* AS BUILT 7-1-66 gmn/HB

CHANGED PIPE SIZE PER CHANGE ORDER No. 2 <i>1/28/60</i>		CITY OF RIVERSIDE, CALIFORNIA DEPARTMENT OF PUBLIC WORKS		FAIRMOUNT TRUNK SEWER POMONA FREEWAY TO PALMYRITA		PROJECT NO. 5082 S-626 SHEET 5 OF 10	
DESIGNED BY: <i>gmn</i> DRAWN BY: <i>sm</i> CHECKED BY:	REVISIONS APPR. DATE	APPROVED BY: <i>[Signature]</i> OFFICE ENGINEER PARK DEPARTMENT TRAFFIC DIVISION ASSISTANT CITY ENG.	BY DATE: <i>1-11-60</i> APPROVED BY: <i>[Signature]</i> DIRECTOR OF PUBLIC WORKS	DATE: <i>1-11-60</i>	HORIZ. SCALE: 1" = 40' VERT. SCALE: 1" = 4'	FILE NO.	

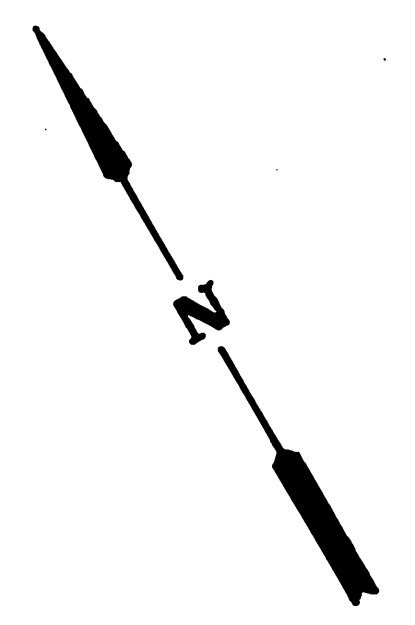


FB. S-12 8-36
 B.M. S&L IN NW. CB. RET. AT HILLCREST & STRONG EL. 863.050
 B.M. CHIS. X ON END OF CB. ON S'LY SIDE OF STRONG APPROX. 300' E'LY OF HILLCREST EL. 861.096
 B.M. R.R. SPK. IN POLE # 524076-H ON NW. COR. STRONG & W. LA CADENA EL. 862.150

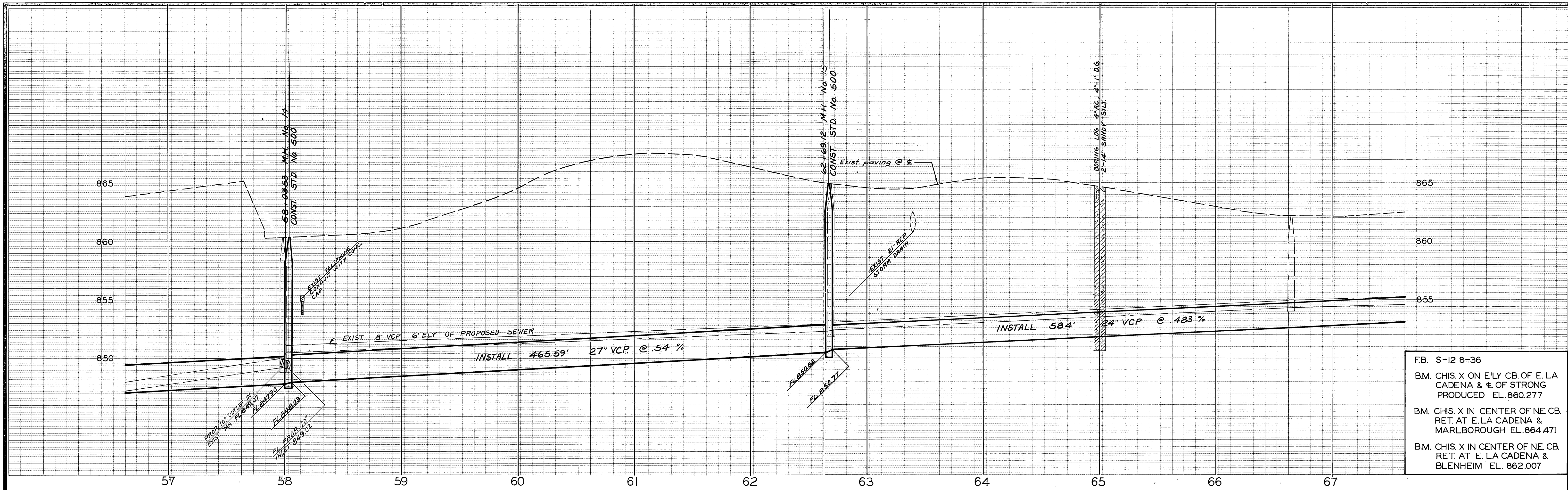


SEE SHEET 10

NOTES
 1. SEE SHEET No. 1 FOR GENERAL NOTES

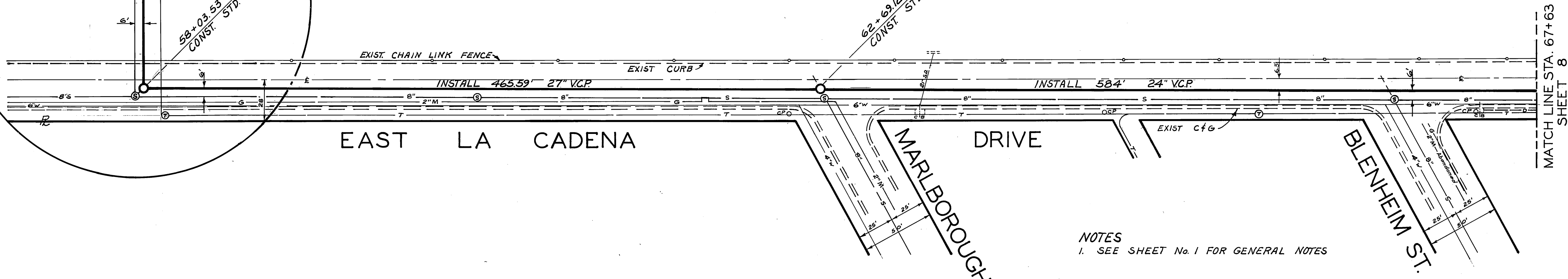
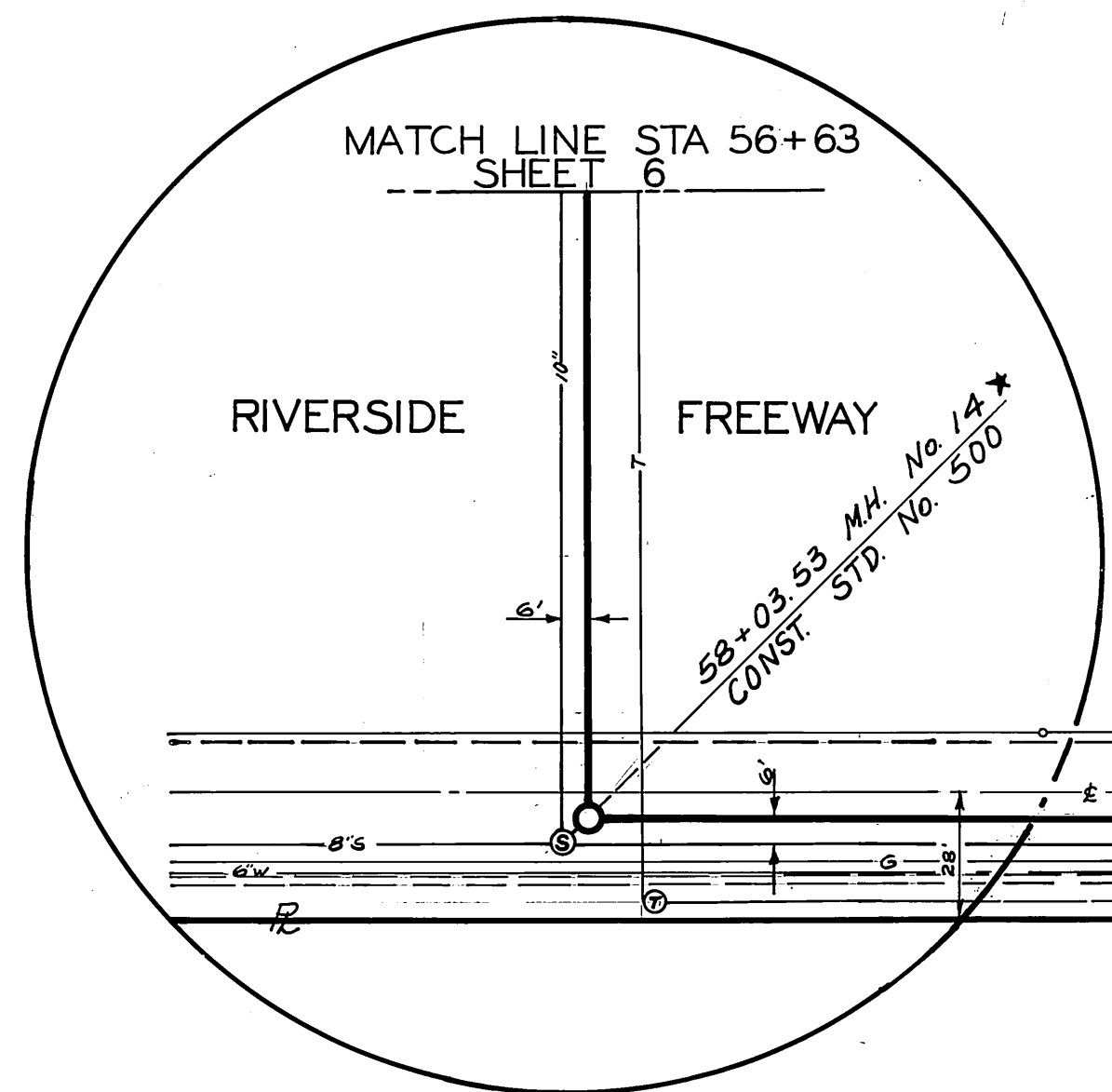


CHANGED PIPE SIZE PER CHANGE ORDER No. 2 DATE 3-11-66		CITY OF RIVERSIDE, CALIFORNIA DEPARTMENT OF PUBLIC WORKS		PROJECT NO. 5082	
DESIGNED BY [Signature] DRAWN BY [Signature]		APPROVED BY [Signature] OFFICE ENGINEER PARK DEPARTMENT TRAFFIC DIVISION ASSISTANT CITY ENG.		APPROVED BY [Signature] DIRECTOR OF PUBLIC WORKS DATE 1-11-66	
* AS BUILT 7-1-66 ghw/HLB		DESIGNED BY [Signature]		HORIZ. SCALE: 1" = 40' VERT. SCALE: 1" = 4'	
FAIRMOUNT TRUNK SEWER POMONA FREEWAY TO PALMYRITA				SHEET 6 OF 10	

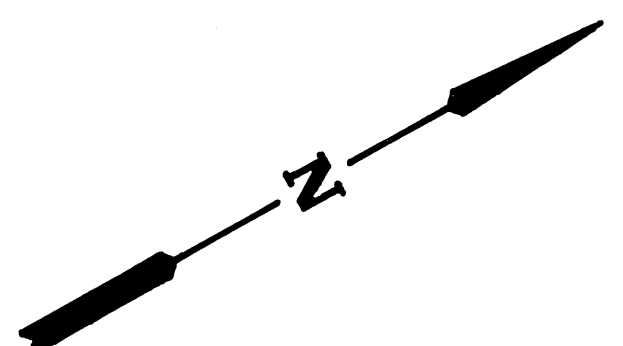


FB S-12 8-36
 B.M. CHIS. X ON E'LY CB. OF E. LA CADENA & E. OF STRONG PRODUCED EL. 860.277
 B.M. CHIS. X IN CENTER OF NE. CB. RET. AT E. LA CADENA & MARLBOROUGH EL. 864.471
 B.M. CHIS. X IN CENTER OF NE. CB. RET. AT E. LA CADENA & BLENHEIM EL. 862.007

SEE SHEET 10

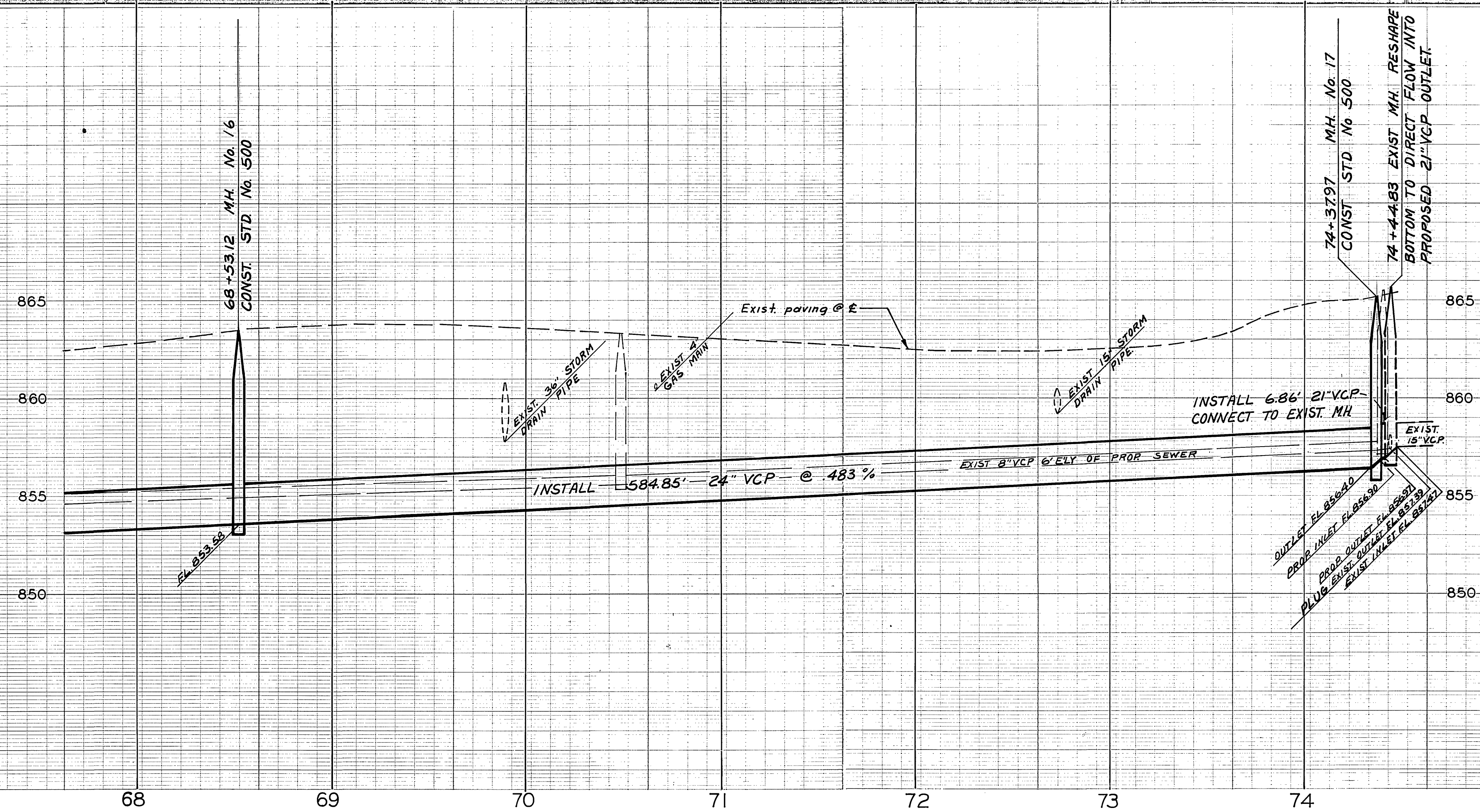


NOTES
 1. SEE SHEET No. 1 FOR GENERAL NOTES

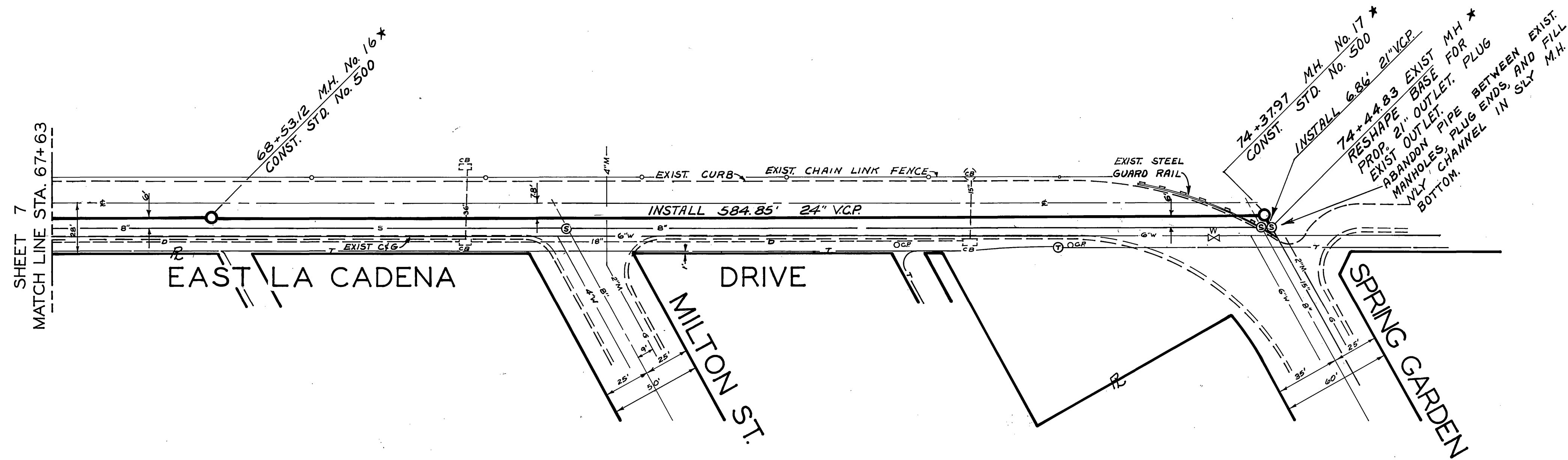


* AS BUILT 7-1-66 gma/ab

CITY OF RIVERSIDE, CALIFORNIA DEPARTMENT OF PUBLIC WORKS		FAIRMOUNT TRUNK SEWER		PROJECT NO. 5082
APPROVED BY	BY	DATE	APPROVED BY	S-626
OFFICE ENGINEER	622	11/26/66	DIRECTOR OF PUBLIC WORKS	
DESIGNED BY	DRAWN BY	CHECKED BY	DATE	SHEET 7 OF 10
MARK	REVISIONS	APPR. DATE	DATE 1-11-66	FILE NO.
HORIZ. SCALE: 1" = 40'			VERT. SCALE: 1" = 4'	

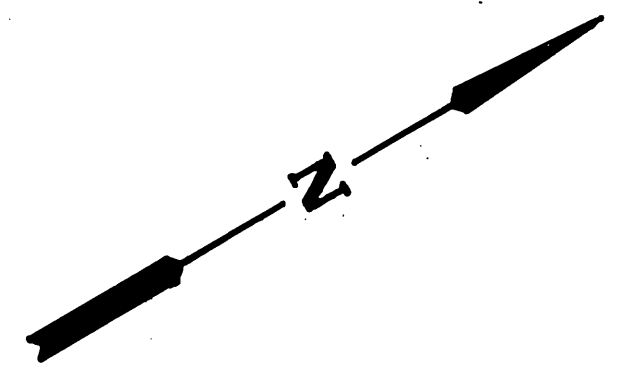


FB. S-12 8-36
 B.M. S&L ON SE. COR. 5' E'LY OF E.C. AT E. LA CADENA AND MILTON EL. 863457
 B.M. CHIS. X ON B.C. ON E'LY CB. OF E. LA CADENA APPROX. 250' N'LY OF MILTON EL. 862.860



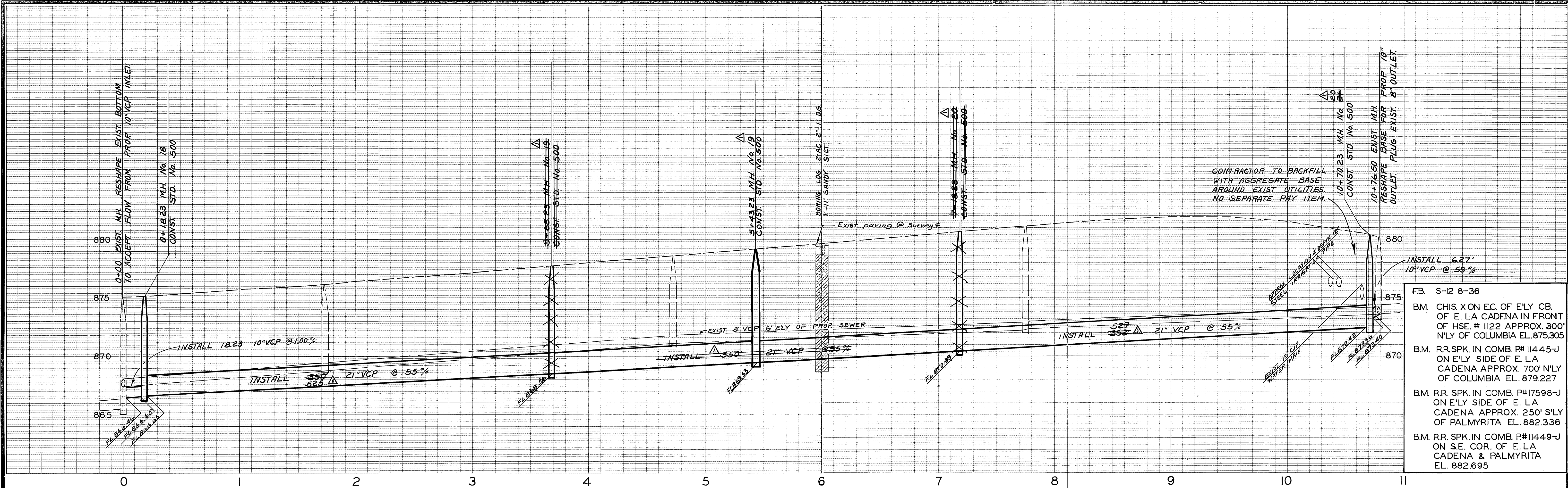
FOR CONSTRUCTION N'LY OF COLUMBIA AVE. SEE SHEET No. 9

NOTES
 1. SEE SHEET No. 1 FOR GENERAL NOTES.

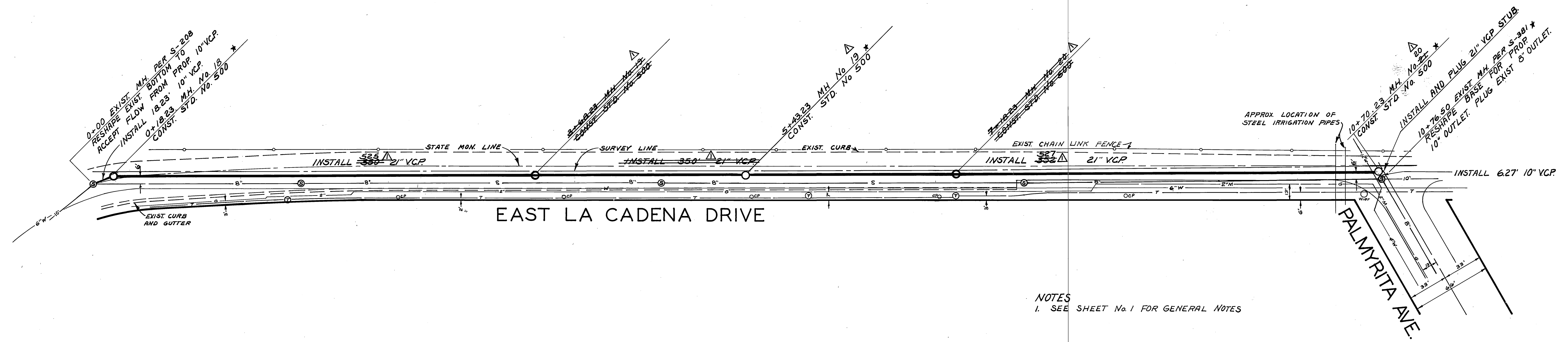


* AS BUILT 7-1-66 gmn/ab

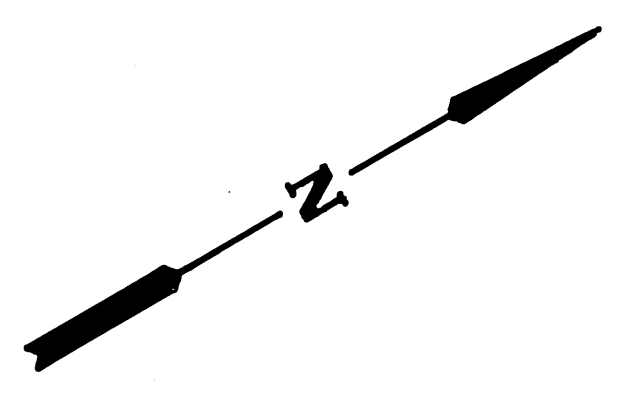
CITY OF RIVERSIDE, CALIFORNIA DEPARTMENT OF PUBLIC WORKS		FAIRMOUNT TRUNK SEWER		PROJECT NO. 5082
APPROVED BY OFFICE ENGINEER PARK DEPARTMENT TRAFFIC DIVISION	BY <i>[Signature]</i>	DATE 1-11-66	APPROVED BY <i>[Signature]</i> DIRECTOR OF PUBLIC WORKS	S-626
DESIGNED BY <i>[Signature]</i>	DRAWN BY <i>[Signature]</i>	CHECKED BY <i>[Signature]</i>	DATE 1-11-66	SHEET 8 OF 10
			HORIZ. SCALE: 1" = 40'	FILE NO.
			VERT. SCALE: 1" = 4'	



- FB. S-12 8-36
- B.M. CHIS. X ON EC. OF E'LY CB. OF E. LA CADENA IN FRONT OF HSE. # 1122 APPROX. 300' N'LY OF COLUMBIA EL. 875.305
- B.M. RR. SPK. IN COMB. P# 11445-J ON E'LY SIDE OF E. LA CADENA APPROX. 700' N'LY OF COLUMBIA EL. 879.227
- B.M. RR. SPK. IN COMB. P# 17598-J ON E'LY SIDE OF E. LA CADENA APPROX. 250' S'LY OF PALMYRITA EL. 882.336
- B.M. RR. SPK. IN COMB. P# 11449-J ON S.E. COR. OF E. LA CADENA & PALMYRITA EL. 882.695

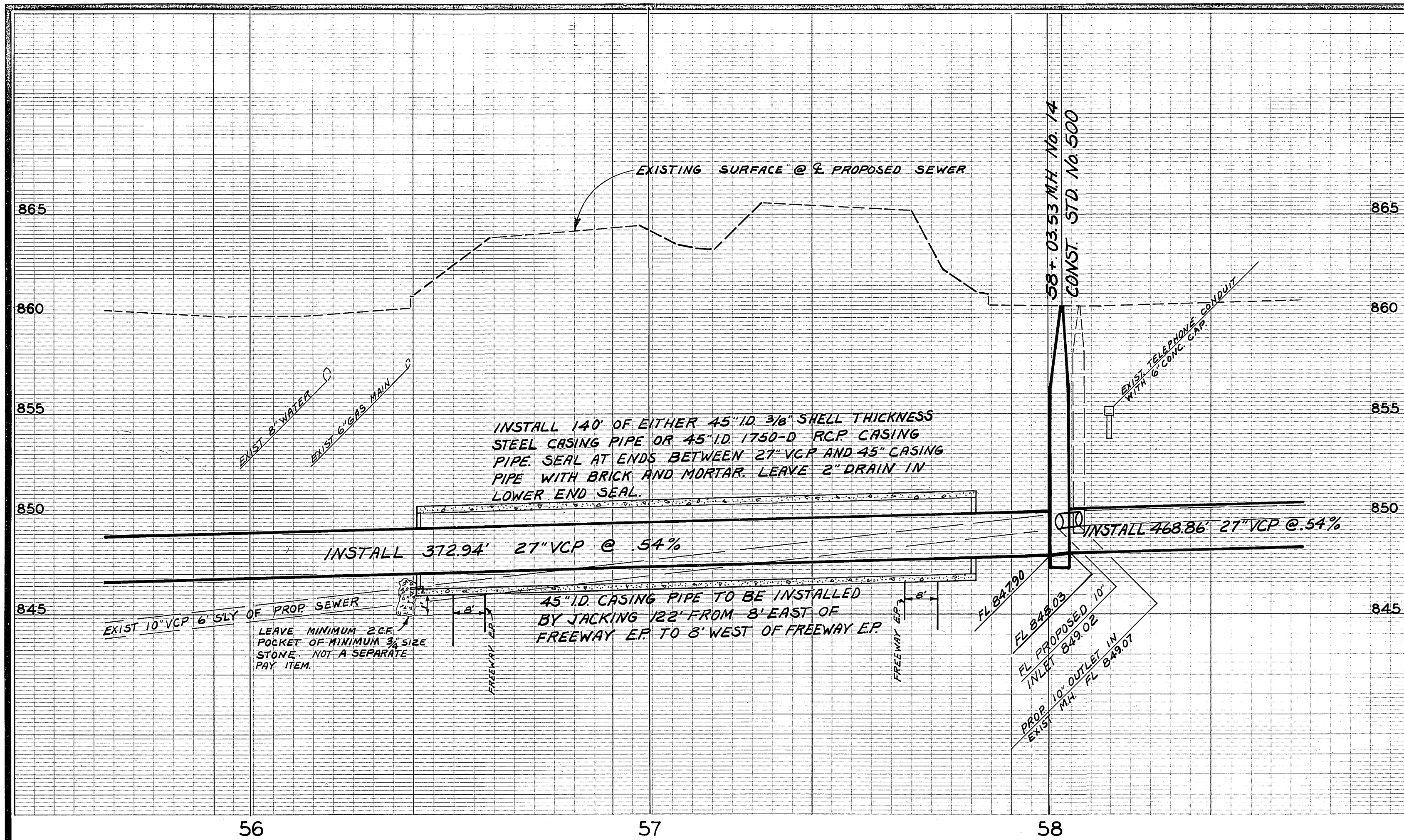


NOTES
1. SEE SHEET No. 1 FOR GENERAL NOTES

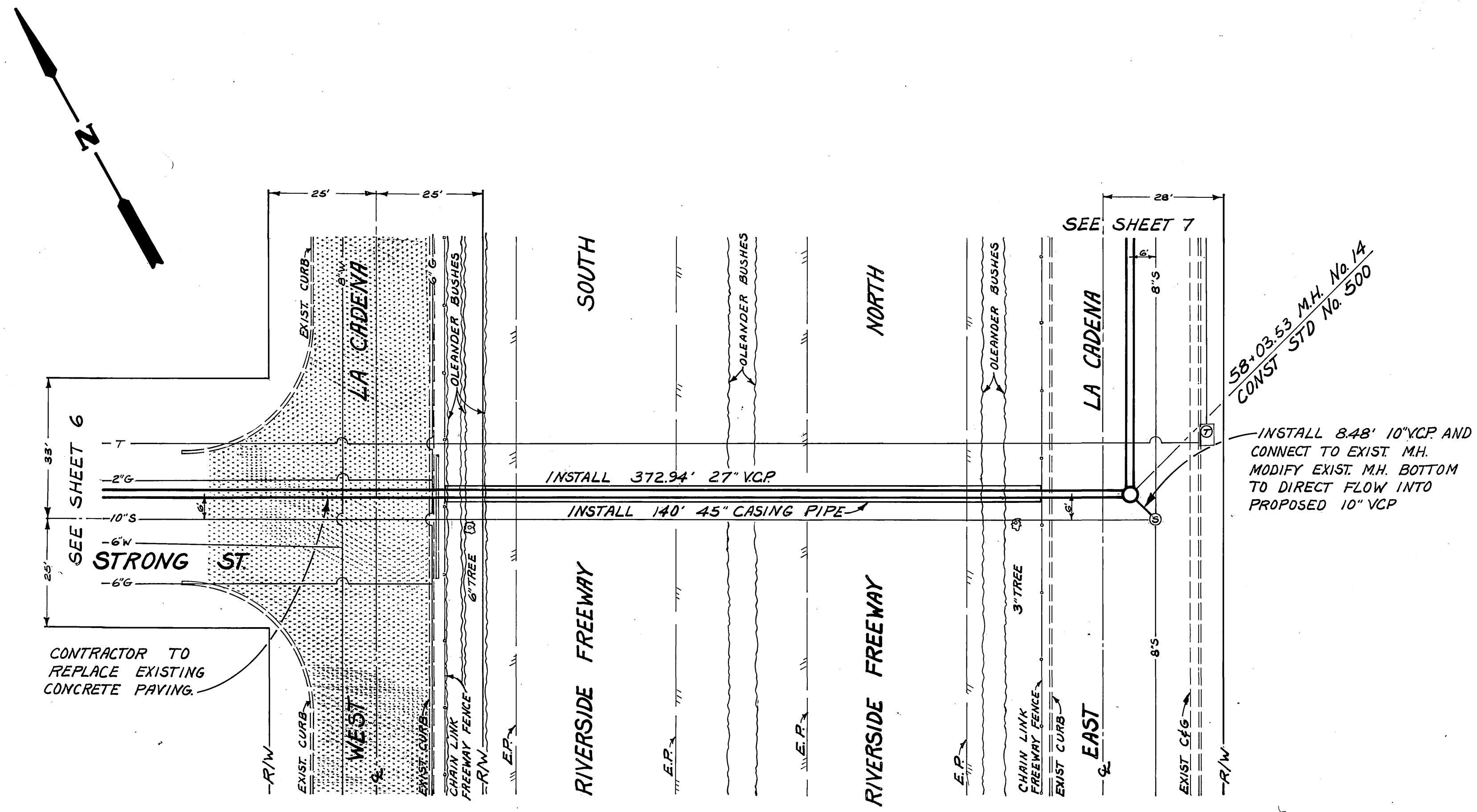


* AS BUILT 7-1-66 gpm/AB

PER CHANGE ORDER No. 1 <i>[Signature]</i> 7/21/66		CITY OF RIVERSIDE, CALIFORNIA DEPARTMENT OF PUBLIC WORKS		PROJECT NO. 5082	
APPROVED BY <i>[Signature]</i> OFFICE ENGINEER	BY <i>[Signature]</i> PARK DEPARTMENT	DATE 1-1-66	APPROVED BY <i>[Signature]</i> DIRECTOR OF PUBLIC WORKS	FAIRMOUNT TRUNK SEWER POMONA FREEWAY TO PALMYRITA	
MARK REVISIONS APPR. DATE	DESIGNED BY <i>[Signature]</i>	DRAWN BY <i>[Signature]</i>	ASSISTANT CITY ENG. <i>[Signature]</i>	DATE 1-1-66	SHEET 9 OF 10
HORIZ. SCALE: 1" = 40'				VERT. SCALE: 1" = 4'	
FILE NO.					

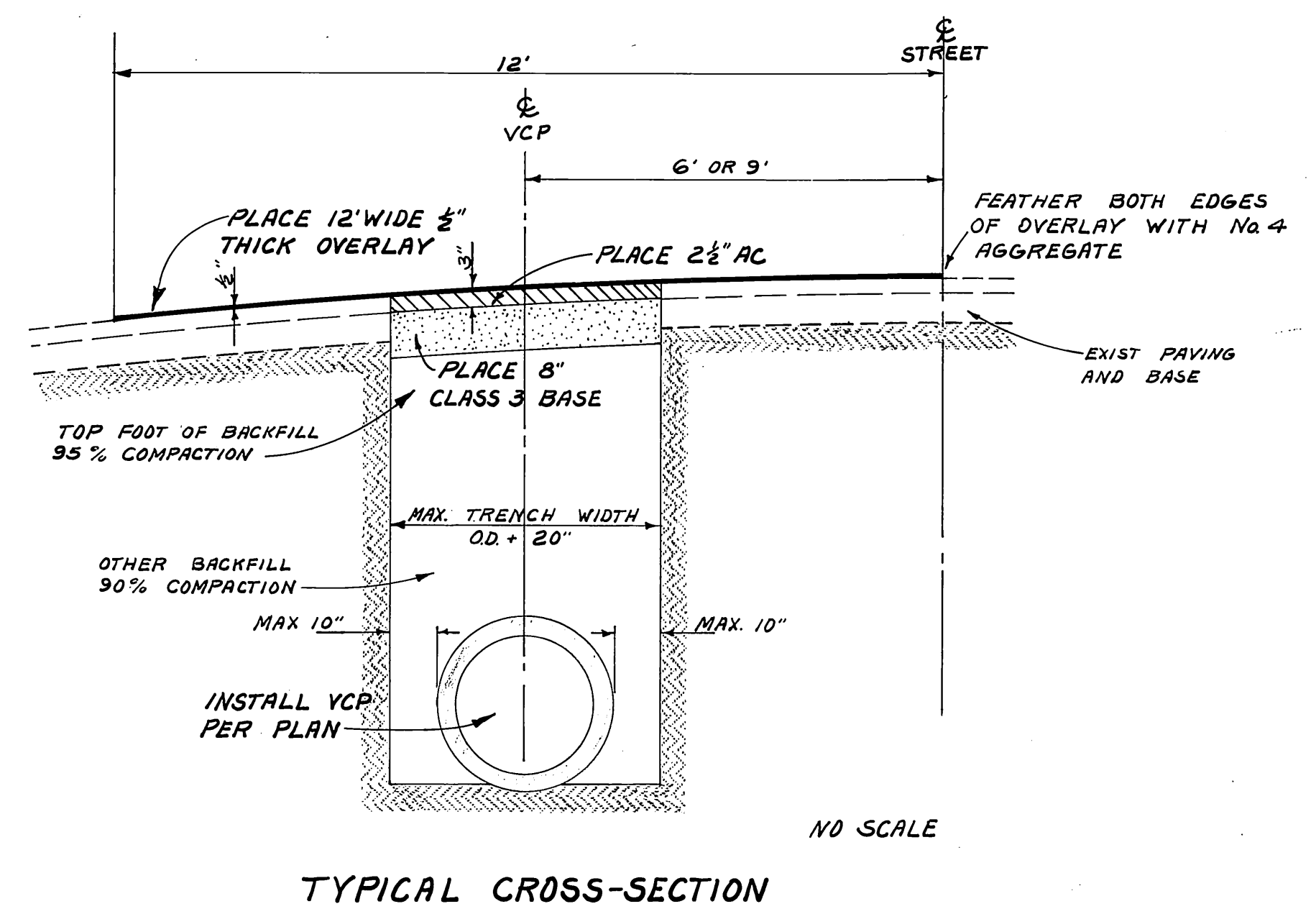


56 57 58



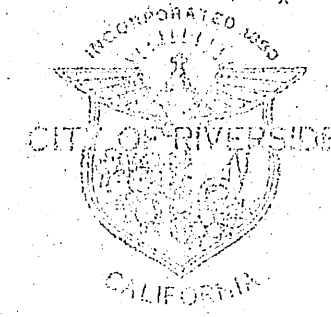
58-03.53 M.H. No. 14
CONST. STD. No. 500

INSTALL 8.48' 10" VCP AND
CONNECT TO EXIST. M.H.
MODIFY EXIST. M.H. BOTTOM
TO DIRECT FLOW INTO
PROPOSED 10" VCP



- NOTES
1. CONTRACTOR TO PROHIBIT ANY ACCESS TO FREEWAY AT ALL TIMES DURING PERIOD OF CONSTRUCTION.
 2. AFTER COMPLETION OF CONSTRUCTION WITHIN FREEWAY RIGHT OF WAY CONTRACTOR TO RESTORE ALL FENCES AND LANDSCAPING TO ORIGINAL CONDITIONS.
 3. CONTRACTOR TO ERECT AND MAINTAIN A FENCE AROUND THE BORE PIT.

CITY OF RIVERSIDE, CALIFORNIA DEPARTMENT OF PUBLIC WORKS		PROJECT NO. 5082
FAIRMOUNT TRUNK SEWER		S-626
RIVERSIDE FREEWAY CROSSING		SHEET 10 OF 10
APPROVED BY OFFICE ENGINEER PARK DEPARTMENT TRAFFIC DIVISION ASSISTANT CITY ENG. 082 12/71	BY DATE 12/71	APPROVED BY DIRECTOR OF PUBLIC WORKS DATE 1-11-66
DESIGNED BY REVISIONS APPR. DATE	DRAWN BY CHECKED BY	HORIZ. SCALE: 1" = 20' VERT. SCALE: 1" = 4' FILE NO.

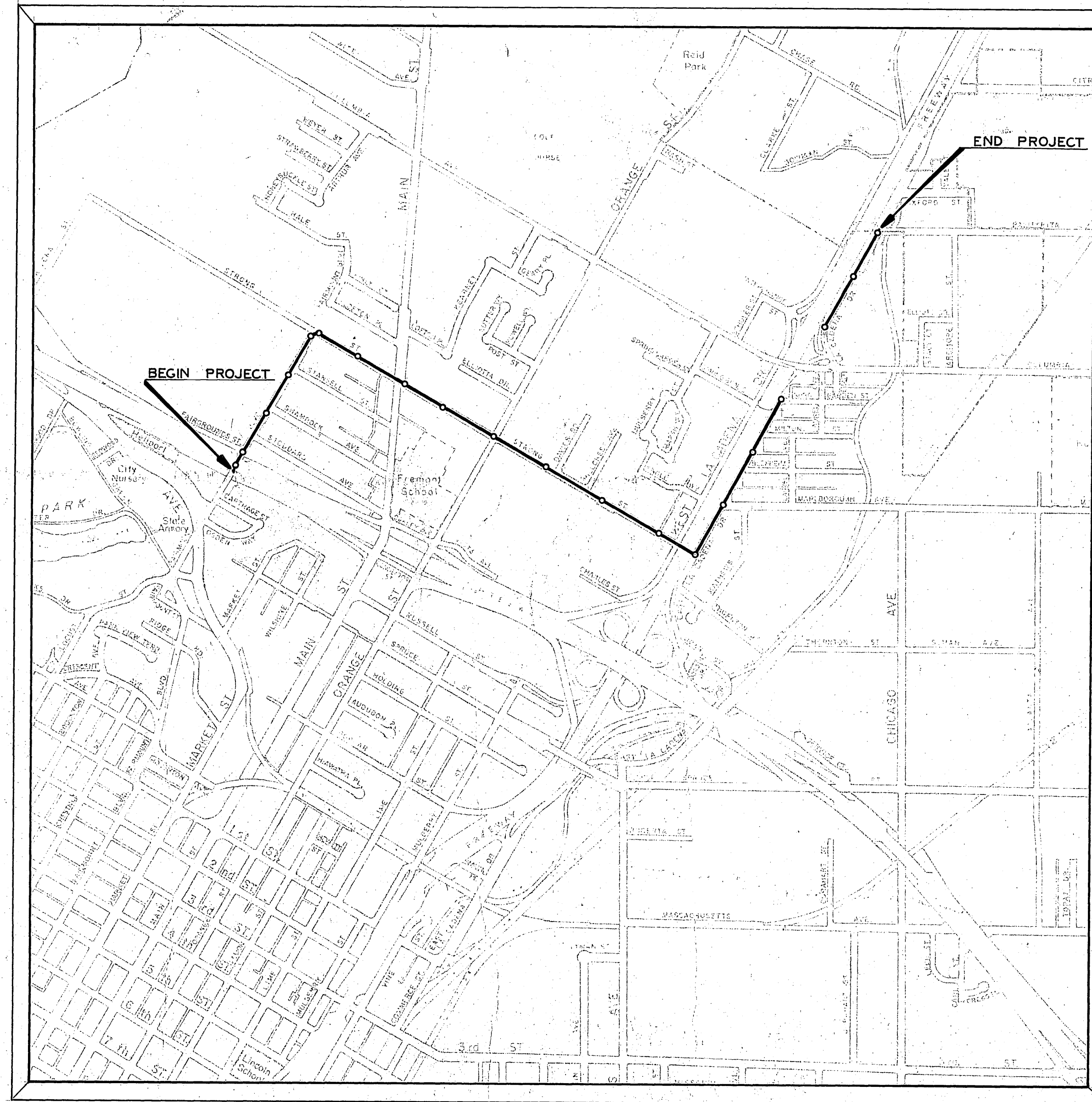


PUBLIC WORKS DEPARTMENT

FAIRMOUNT TRUNK SEWER

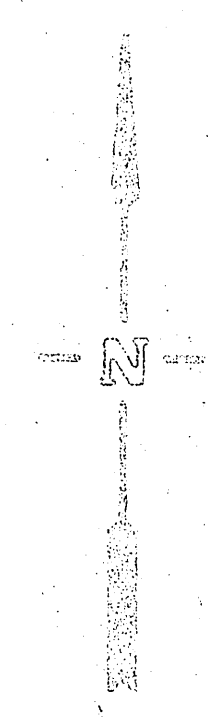
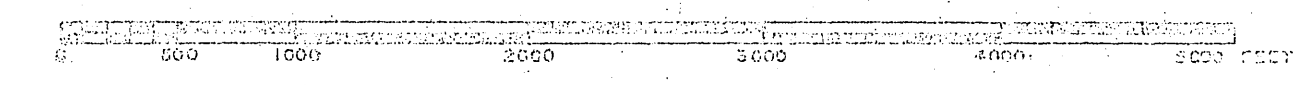
INDEX OF SHEETS

PROJECT N ^o	DRAWING N ^o	SHEET N ^o	
5082	S-626	1-9	PLAN & PROFILE OF PROPOSED V.C.P. TRUNK SEWER
		10	DETAIL SHOWING CROSSING OF RIVERSIDE FREEWAY & TYPICAL CROSS-SECTION



PROJECT LOCATION MAP

LENGTH OF PROJECT 1.61 MILES



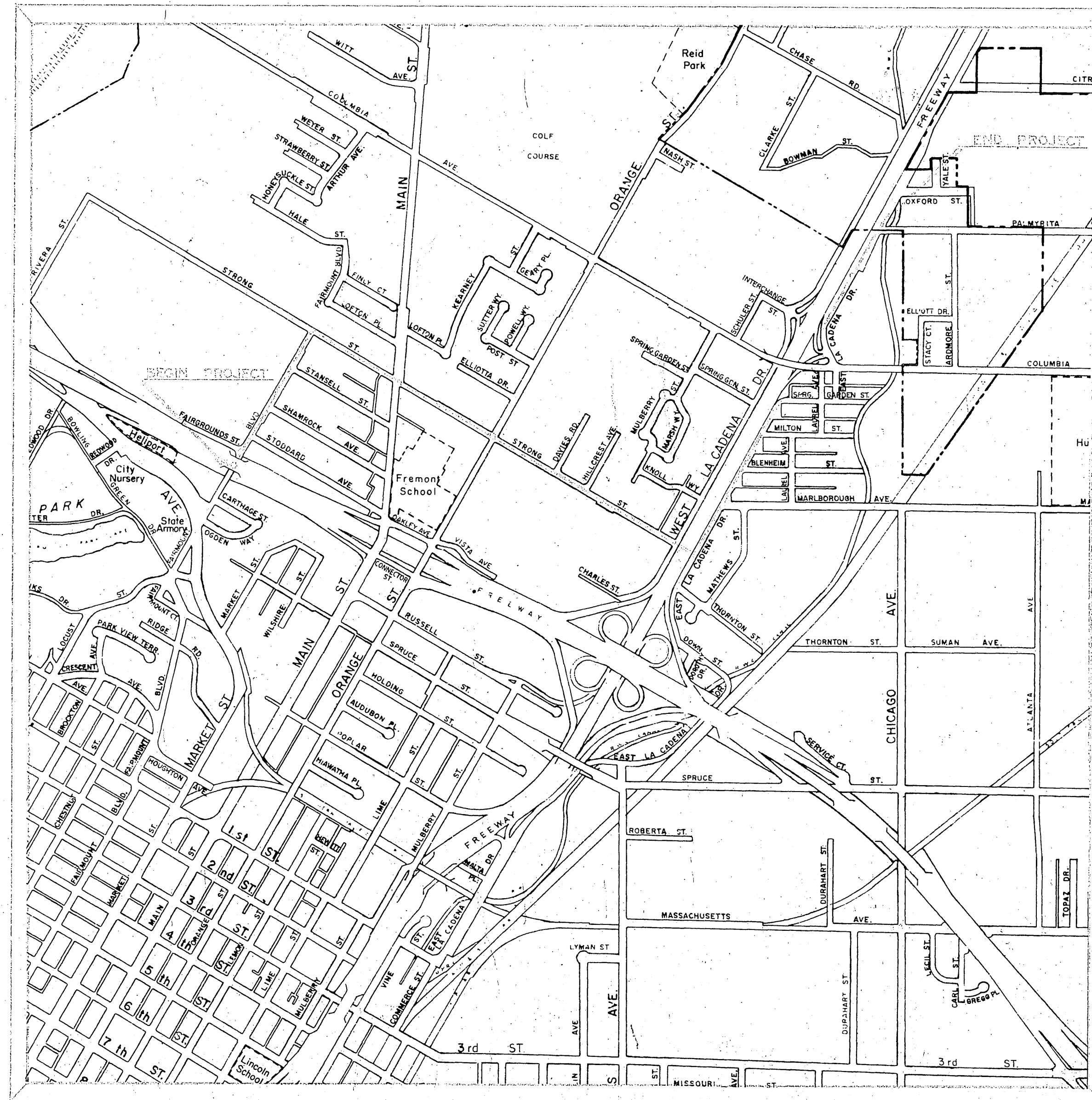


PUBLIC WORKS DEPARTMENT

FAIRMOUNT TRUNK SEWER

INDEX OF SHEETS

PROJECT NO	DRAWING NO	SHEET NO	DESCRIPTION
5052	S-626	1-9	PLAN & PROFILE OF PROPOSED V.C.P. TRUNK SEWER
		10	DETAIL SHOWING CROSSING OF RIVERSIDE FREEWAY & TYPICAL CROSS-SECTION



PROJECT LOCATION MAP

LENGTH OF PROJECT 1.61 MILES

