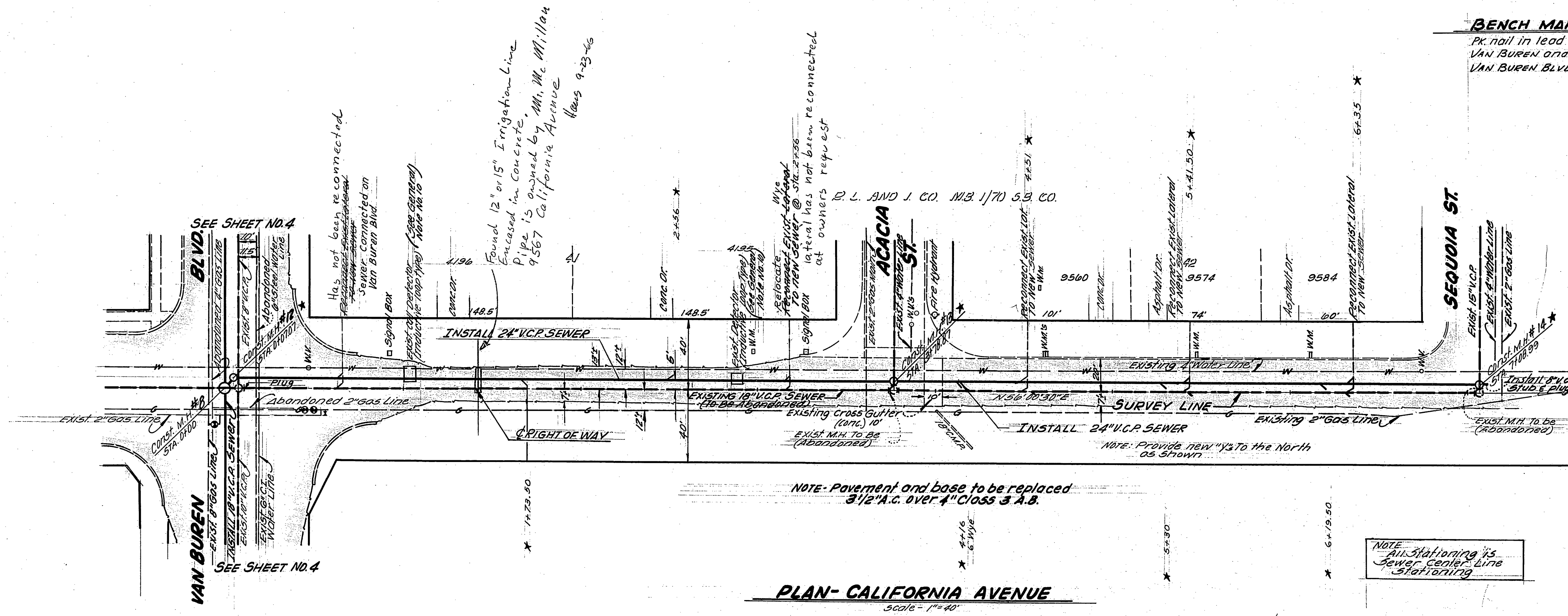


BENCH MARK -
 Pk. nail in lead in center of curb return on S. Ely corner VAN BUREN and GARFIELD. Ref. sewer plan and profile VAN BUREN BLVD. R15 799. Elev. 771.81.

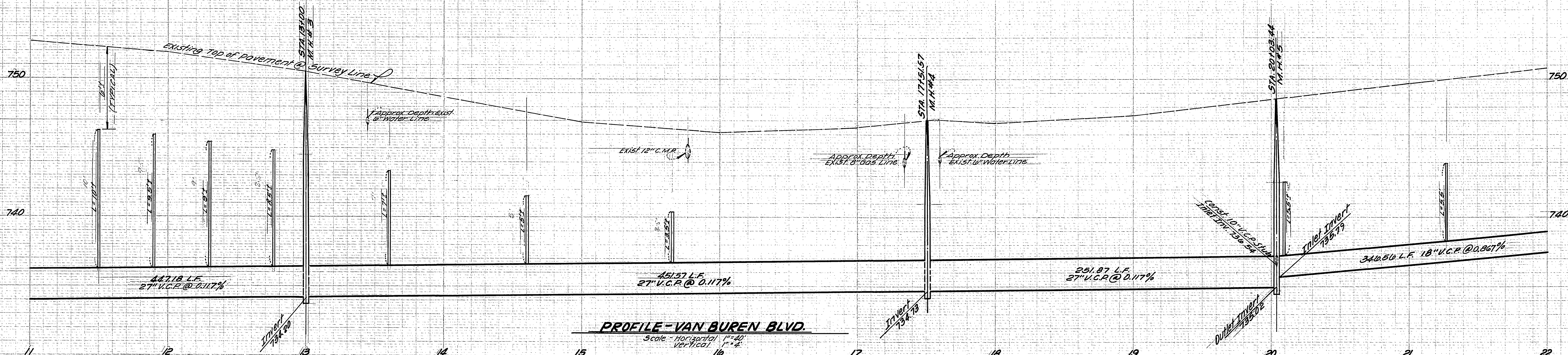
- GENERAL NOTES:**
- All chimneys to be located in the field. All manholes to be per Riverside City Standard No. 500 unless otherwise noted on Plan. Maximum spacing of steps in all manholes shall be 12".
 - All construction shall be in accordance with Standards and Specifications No. 441 of the City of Riverside Department of Public Works. Pipe shall be bedded per Case II Standard Drawing No. 453, unless otherwise shown.
 - It shall be the responsibility of the Contractor to clear the Right of Way in accordance with the provisions of law as it affects each utility including irrigation lines and appurtenances, and of no extra cost to the City of Riverside.
 - Joints in Vitrified Clay Pipe sewers shall conform to A.S.T.M. Standard C-425-607, or the latest revision thereof.
 - The contractor shall contact the Public Utilities Dept., Irrigation Division, City of Riverside prior to any construction on Van Buren between California and Garfield.
 - The contractor shall contact the Pacific Telephone Company prior to construction on Van Buren due to the crossing of an underground telephone cable Sta. 42202. The Contractor may call collect 714 884 0071.
 - Indicates chimney to be constructed as per Std. Drwg. No. 501.
 - The contractor shall notify Mr. Montigel with the Arlington Mutual Water Company prior to construction on Morris Street. Phone No. 683 2545.
 - The Contractor shall notify the Southern California Edison Co. prior to any trenching at Sta. 13100 on Morris Street.
 - The Contractor shall remove and replace detectors. The detector shall conform to the provisions in Section 01-4.05B of the State Standard Specifications, dated July, 1964.
 - Before a cut sheet can be issued the contractor shall expose exist stubs to be joined for the engineer to verify the invert elevation.
 - Contractor's attention is called to the fact that ground water may be encountered.



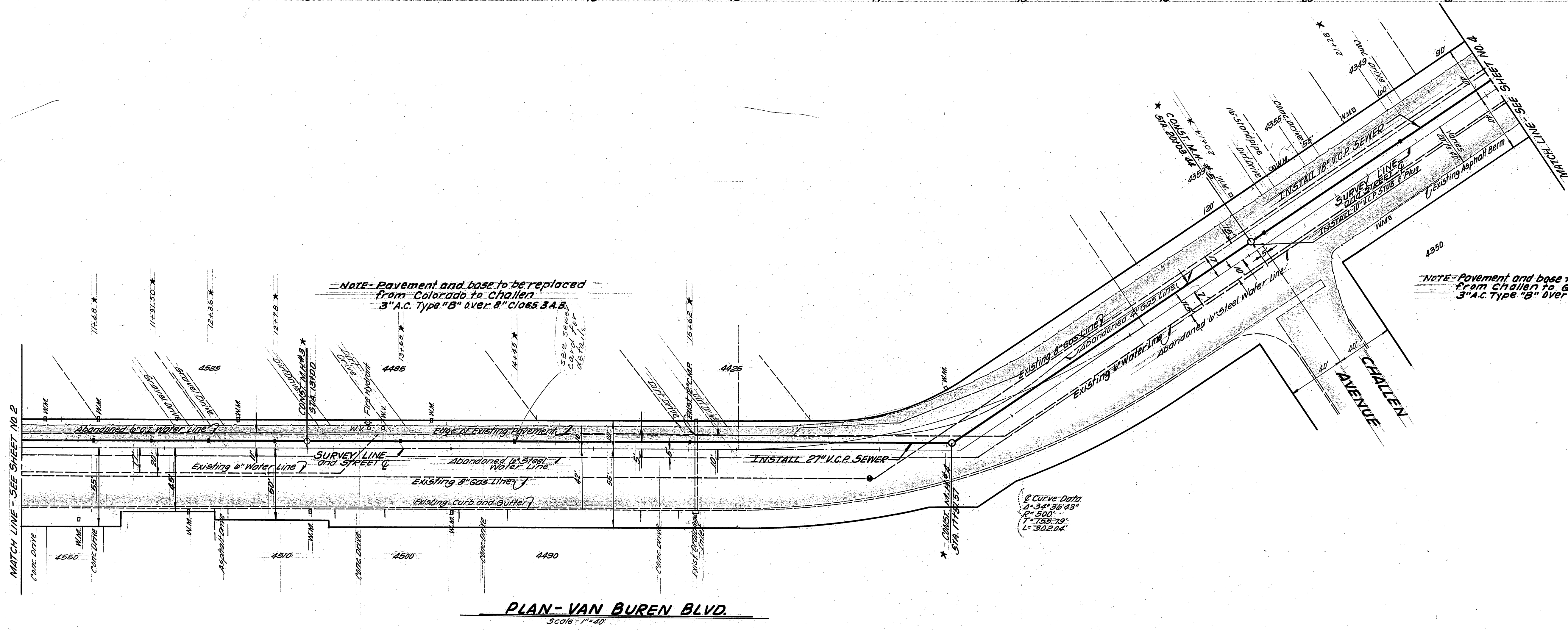
INDEX MAP
 Scale - 1" = 80'
 G.R.R. 1 G.S.
 G.L. 50073
 P.R.R.
 65-26.01
 As shown

Raymond A. Jones
 11/19/65
 INDEXED M.B.

CITY OF RIVERSIDE, CALIFORNIA DEPARTMENT OF PUBLIC WORKS		HARRISON TRUNK REPLACEMENT CALIFORNIA AVENUE VAN BUREN BLVD TO SEQUOIA ST.		PROJECT NO. 5-629
APPROVED BY OFFICE ENGINEER PARK DEPARTMENT TRAFFIC DIVISION ASSISTANT CITY ENG.	BY DATE 11-22-65	APPROVED BY DIRECTOR OF PUBLIC WORKS	DATE 11-22-65	SHEET 1 OF 8
DESIGNED BY DRAWN BY CHECKED BY	AS BUILT 9-29-66 gmm	HORIZ. SCALE: 1" = 40' VERT. SCALE: 1" = 4'	FILE NO.	50-4-109



BENCH MARK:
 T.B.M. 100 P. Nail in power pole No. 1499246E
 West Side of VAN BUREN, Survey Line
 Sta. 14798.8 Elev. 748.18



NOTE: Pavement and base to be replaced from Colorado to Challen
 3" A.C. Type "B" over 8" class 3 A.B.

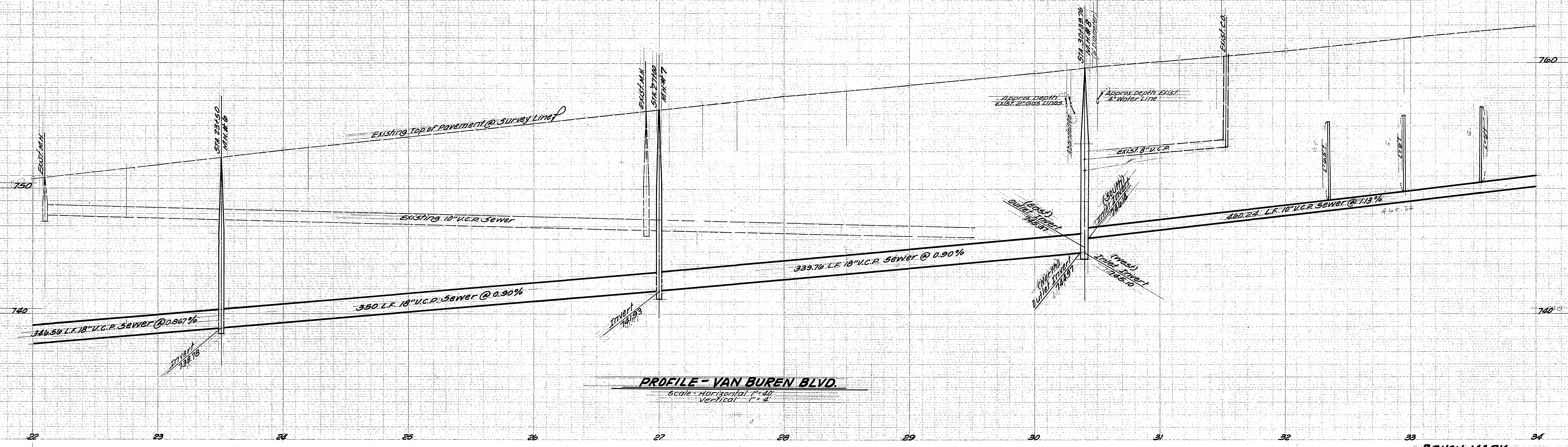
NOTE: Pavement and base to be replaced from Challen to Garfield
 3" A.C. Type "B" over 6" class 3 A.B.

Curve Data
 R=347.36' 43"
 C=500'
 L=755.79'
 L=302.04'

* AS BUILT 9-19-66 G.M.V.

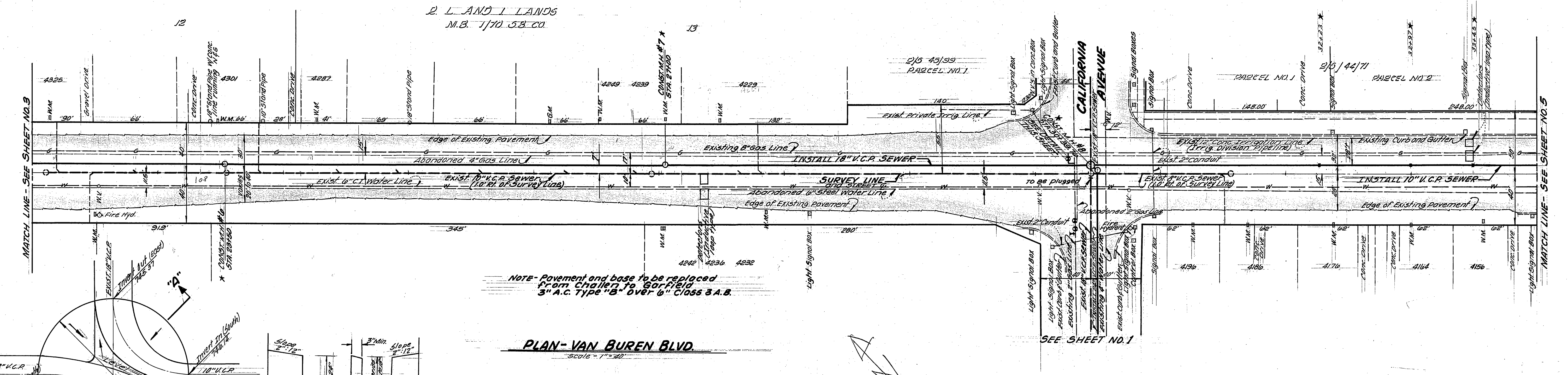
R.R.F.G.S.
 Gil Soerg
 R.R.R.
 65-26.01
 As shown
 Raymond V. Stone Jr.
 11/17/65 7683

CITY OF RIVERSIDE, CALIFORNIA DEPARTMENT OF PUBLIC WORKS				VAN BUREN OUTFALL VAN BUREN BOULEVARD STA 11+00 TO 22+00		PROJECT NO. 5-629
APPROVED BY OFFICE ENGINEER PARK DEPARTMENT TRAFFIC DIVISION ASSISTANT CITY ENG.	BY W.D.S. DATE 12-22-65	DATE 12-22-65	APPROVED BY DIRECTOR OF PUBLIC WORKS DATE 11/17/65	SHEET 3 OF 8		FILE NO.
DESIGNED BY	DRAWN BY	CHECKED BY	HORIZ. SCALE: 1" = 40'		VERT. SCALE: 1" = 4'	

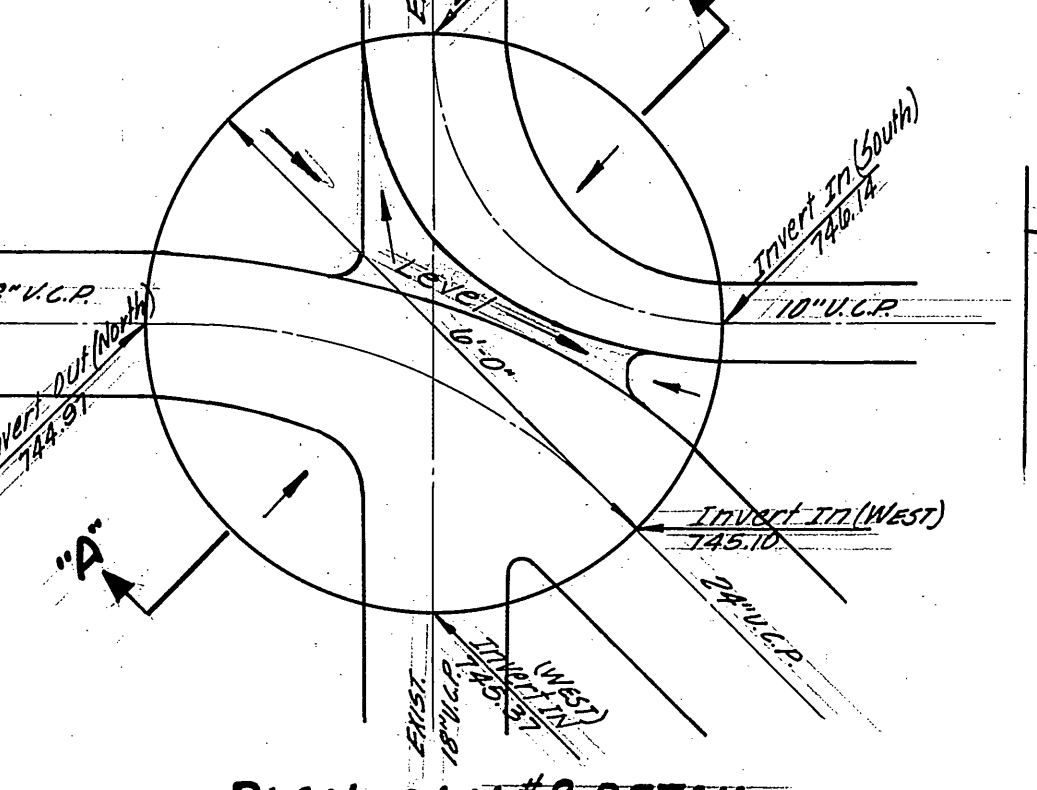


PROFILE - VAN BUREN BLVD.
Scale - Horizontal 1" = 40'
Vertical 1" = 4'

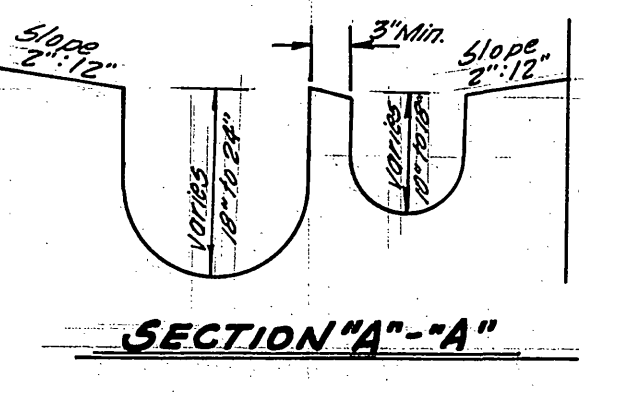
BENCH MARK
T.B.M. 60 P Nail in Telephone pole No. 592573 H
West side of VAN BUREN, Survey Line Sta. 221+5.5
Elev. 752.87
T.B.M. 60 P Nail in Telephone pole No. 592569 H West
side of VAN BUREN, Survey Line Sta. 291+9.1
Elev. 753.36



PLAN - VAN BUREN BLVD.
Scale - 1" = 40'



PLAN - M.H. #8 DETAIL
INTERSECTION VAN BUREN & CALIFORNIA
Scale - 1" = 2'

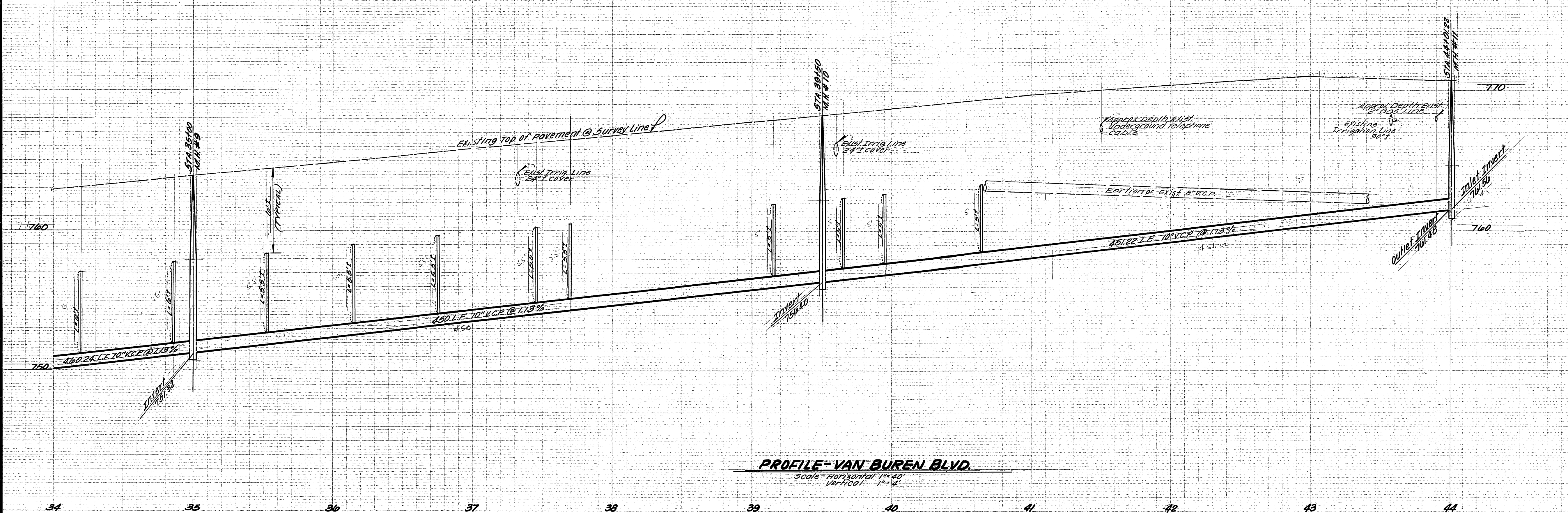


SECTION "A-A"

* AS BUILT 9-19-66 shown

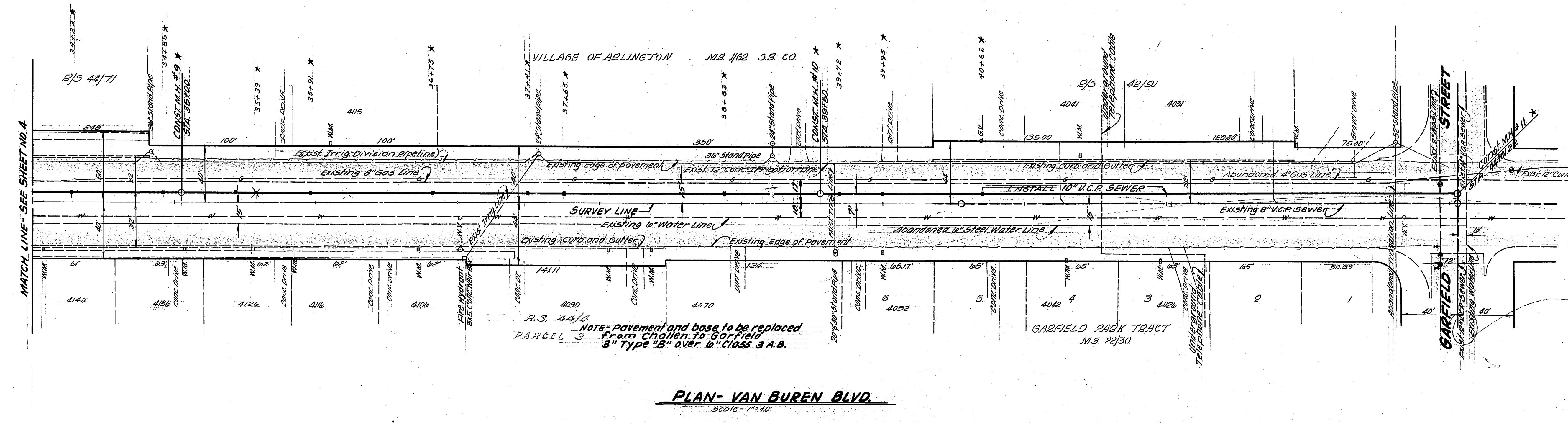
REVISIONS
CITY OF RIVERSIDE, CALIFORNIA
DEPARTMENT OF PUBLIC WORKS
PROJECT NO. 5-629
SHEET 4 OF 8
FILE NO.

CITY OF RIVERSIDE, CALIFORNIA DEPARTMENT OF PUBLIC WORKS			VAN BUREN OUTFALL VAN BUREN BOULEVARD STA 221+00 TO 34+00		PROJECT NO. 5-629
APPROVED BY OFFICE ENGINEER PARK DEPARTMENT TRAFFIC DIVISION ASSISTANT CITY ENG.	BY [Signature] DATE 12-22-65	APPROVED BY [Signature] DATE 12-22-65	HORIZ. SCALE: 1" = 40'	VERT. SCALE: 1" = 4'	SHEET 4 OF 8
MARK DESIGNED BY REVISIONS APPR. DATE DRAWN BY CHECKED BY	[Blank]	[Blank]	[Blank]	[Blank]	FILE NO.

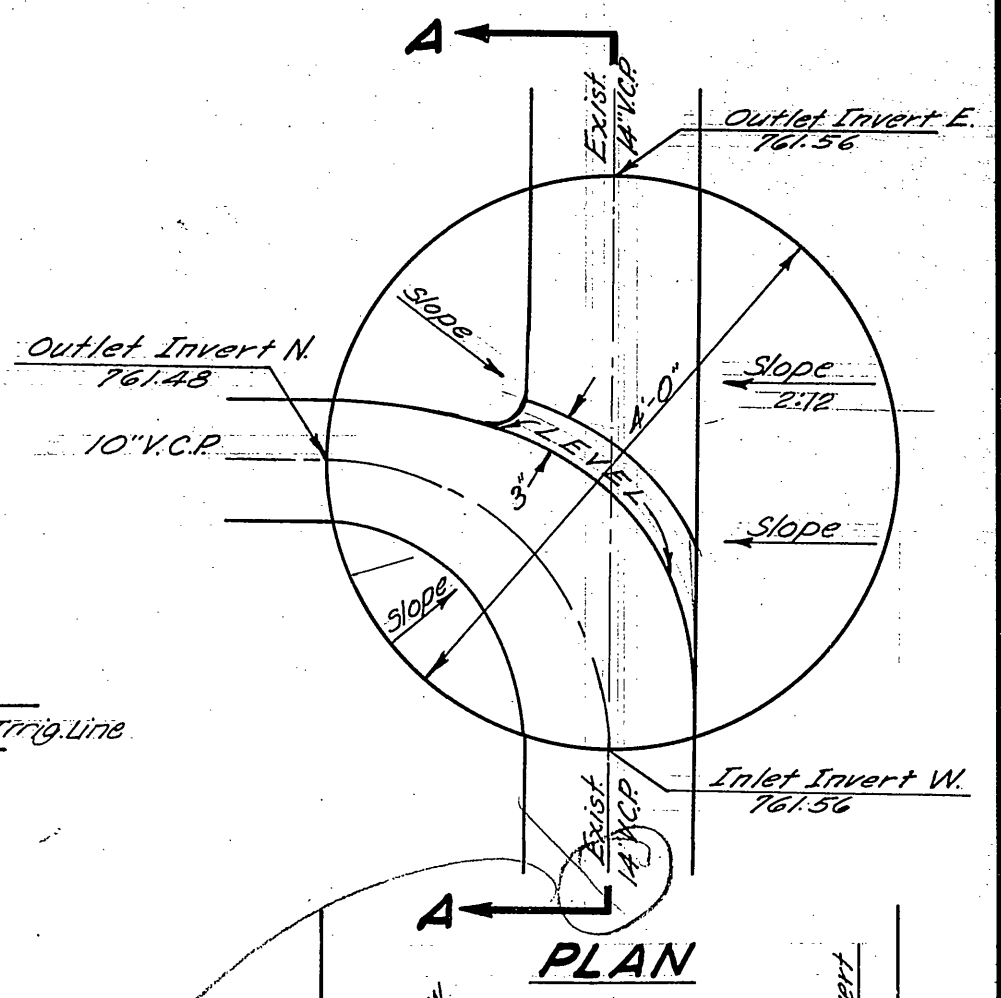


PROFILE-VAN BUREN BLVD.
 Scale - Horizontal 1"=40'
 Vertical 1"=2'

BENCH MARK
 T.B.M. 60P Nail in Telephone pole No. 5925634 West
 Side of VAN BUREN, Survey Line Sta. 37409.6
 Elev. 767.26



PLAN-VAN BUREN BLVD.
 Scale - 1"=40'

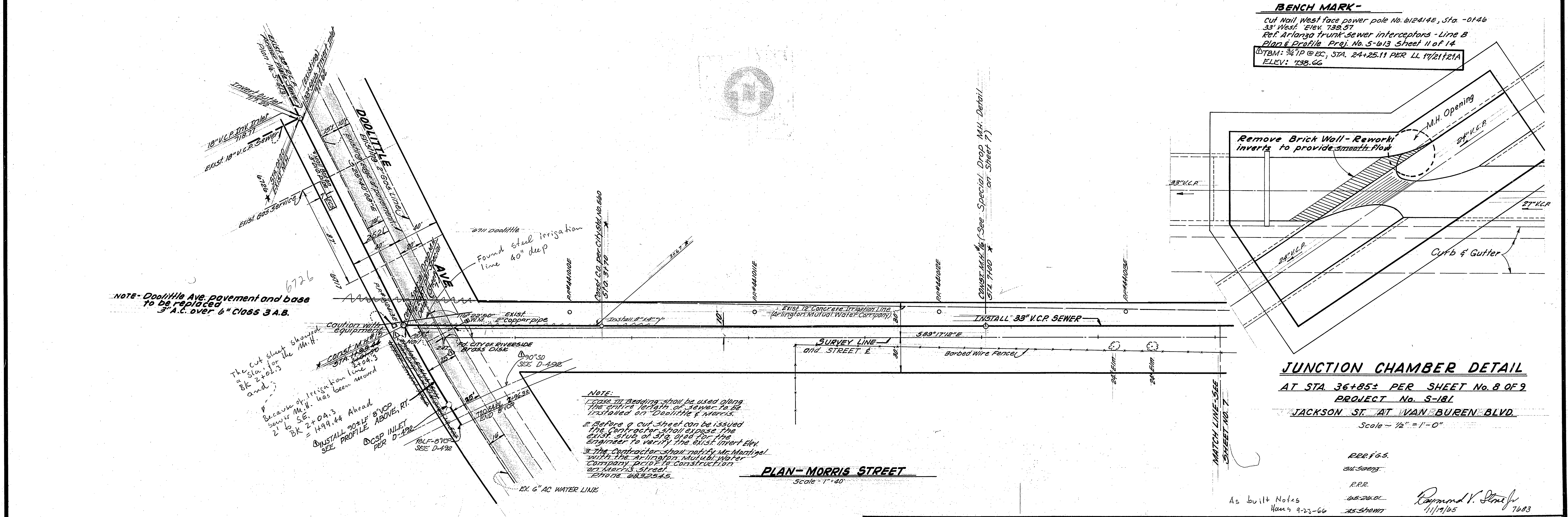
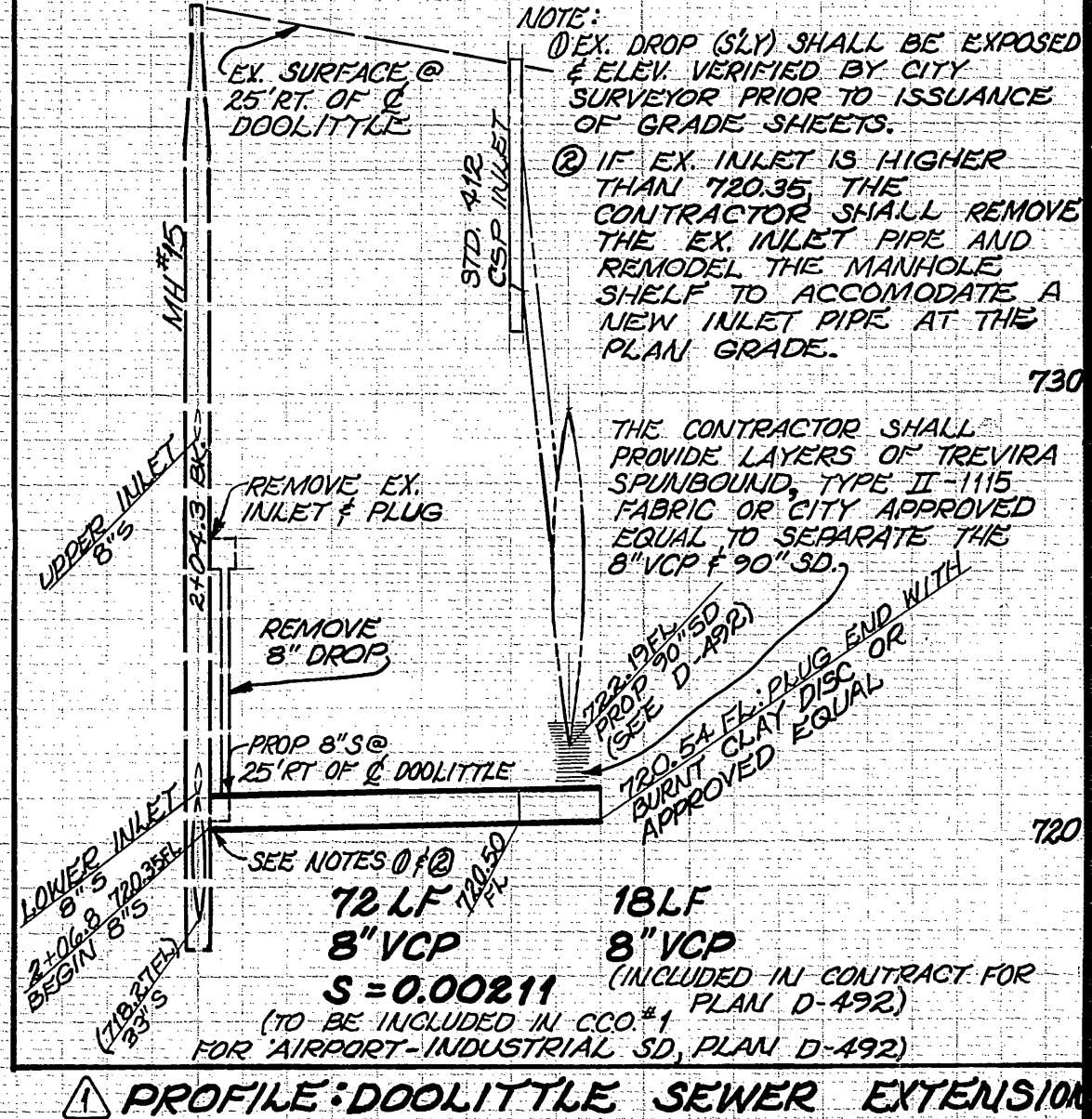
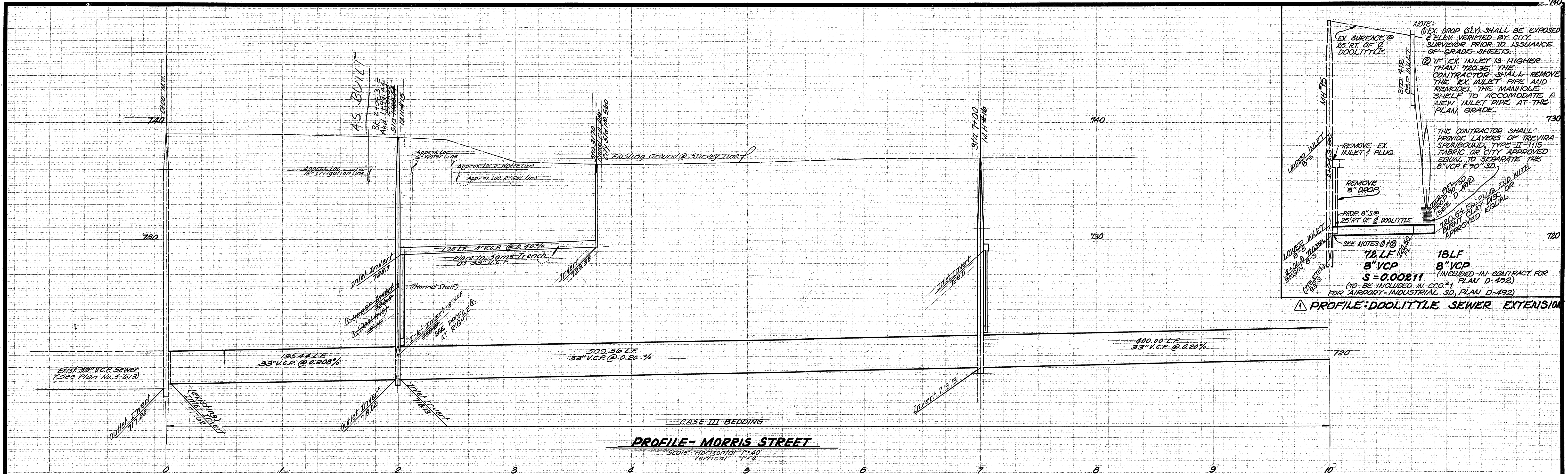


SECTION A-A
MANHOLE #11 DETAIL
INTERSECTION OF VAN BUREN AND GARFIELD
 Scale - 1"=10'

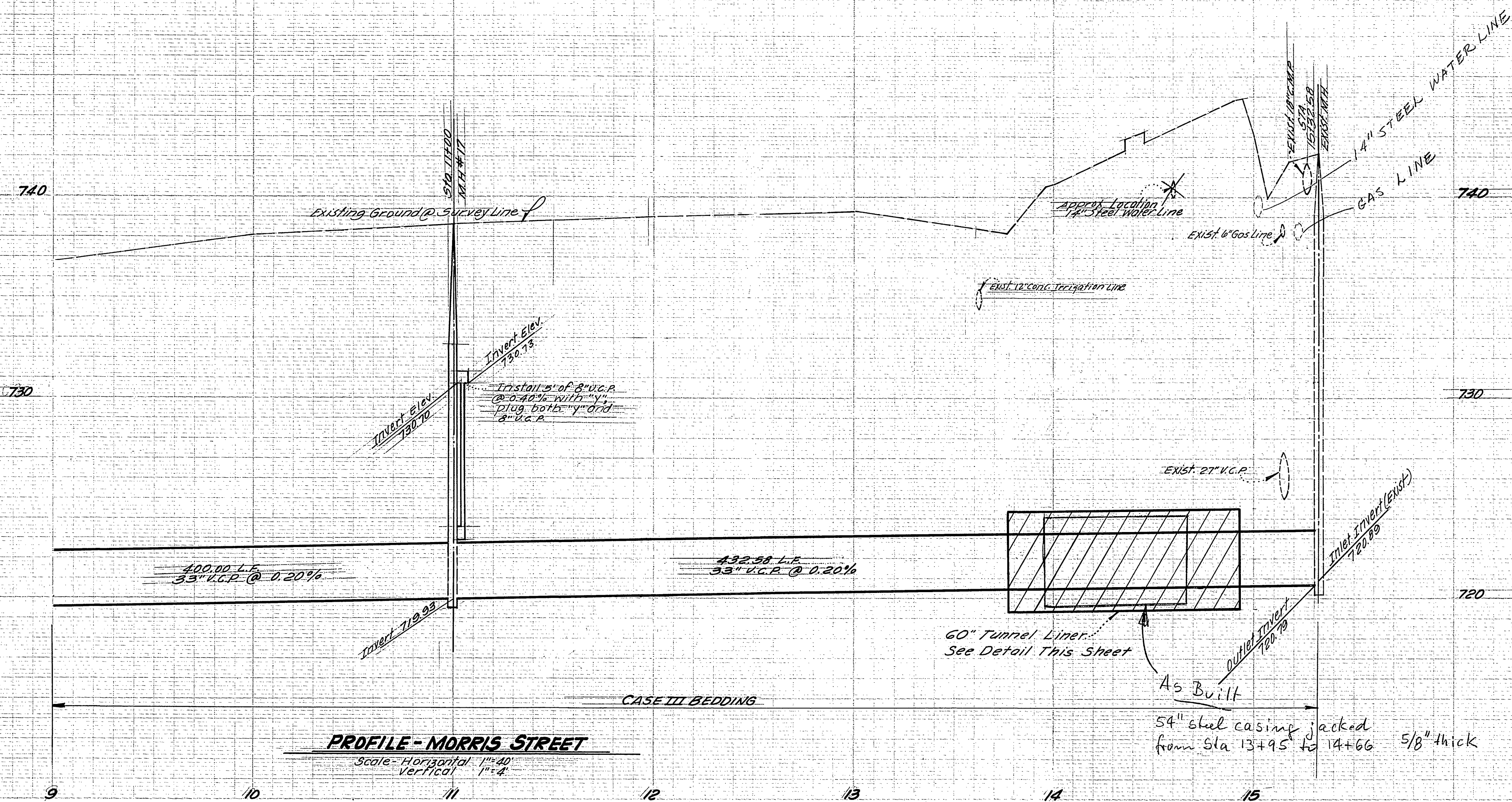
DESIGNED BY: R.R.P. 6/55
 DRAWN BY: G.H. 5/6/55
 CHECKED BY: R.R.P.
 DATE: 11/14/65
 7483

CITY OF RIVERSIDE, CALIFORNIA DEPARTMENT OF PUBLIC WORKS			VAN BUREN OUTFALL VAN BUREN BOULEVARD STA 34100 TO 45100		PROJECT NO. 5-629
APPROVED BY OFFICE ENGINEER PARK DEPARTMENT TRAFFIC DIVISION ASSISTANT CITY ENG.	BY [Signature] DATE 12-22-65	APPROVED BY DIRECTOR OF PUBLIC WORKS DATE 12-22-65	SHEET 5 OF 8		
DESIGNED BY: DRAWN BY: CHECKED BY:			HORIZ. SCALE: 1"=40' VERT. SCALE: 1"=4'		FILE NO.

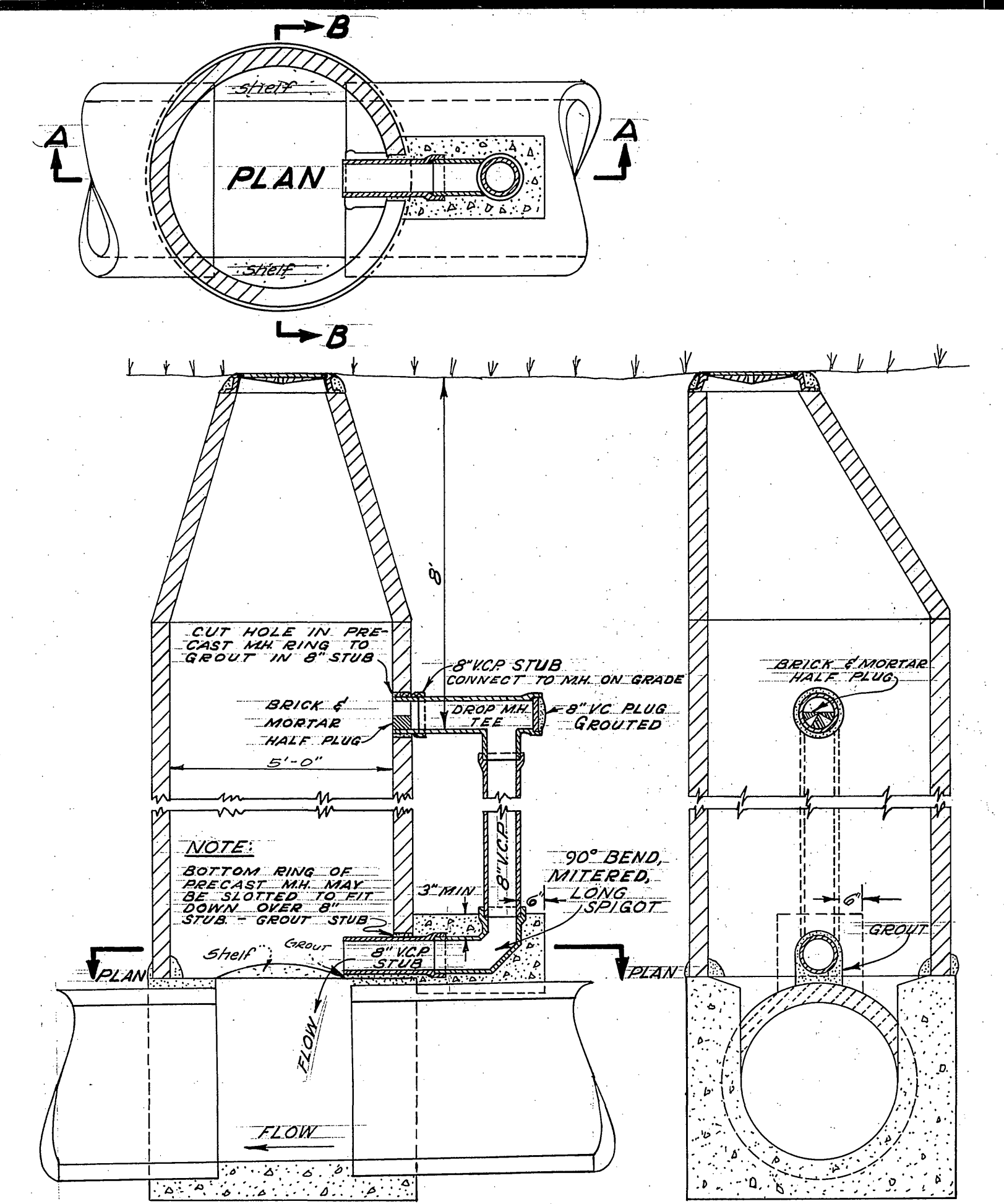
* AS BUILT 9-19-66 GHW



CITY OF RIVERSIDE, CALIFORNIA DEPARTMENT OF PUBLIC WORKS		VAN BUREN OUTFALL IN MORRIS STREET FROM DOOLITTLE AVENUE TO VAN BUREN BLVD.		PROJECT NO. S-629
APPROVED BY OFFICE ENGINEER PARK DEPARTMENT TRAFFIC DIVISION ASSISTANT CITY ENG.	BY DATE 10/2/65 12/22/65 12/22/65	APPROVED BY <i>[Signature]</i> DIRECTOR OF PUBLIC WORKS	DATE 12-22-65	SHEET 6 OF 8
DESIGNED BY	DRAWN BY	CHECKED BY	DATE	FILE NO.
As built Notes Nov 9 9-23-66 75-510117		<i>Raymond V. Stineff</i> 11/17/65 7683		HORIZ. SCALE: 1" = 40' VERT. SCALE: 1" = 4'

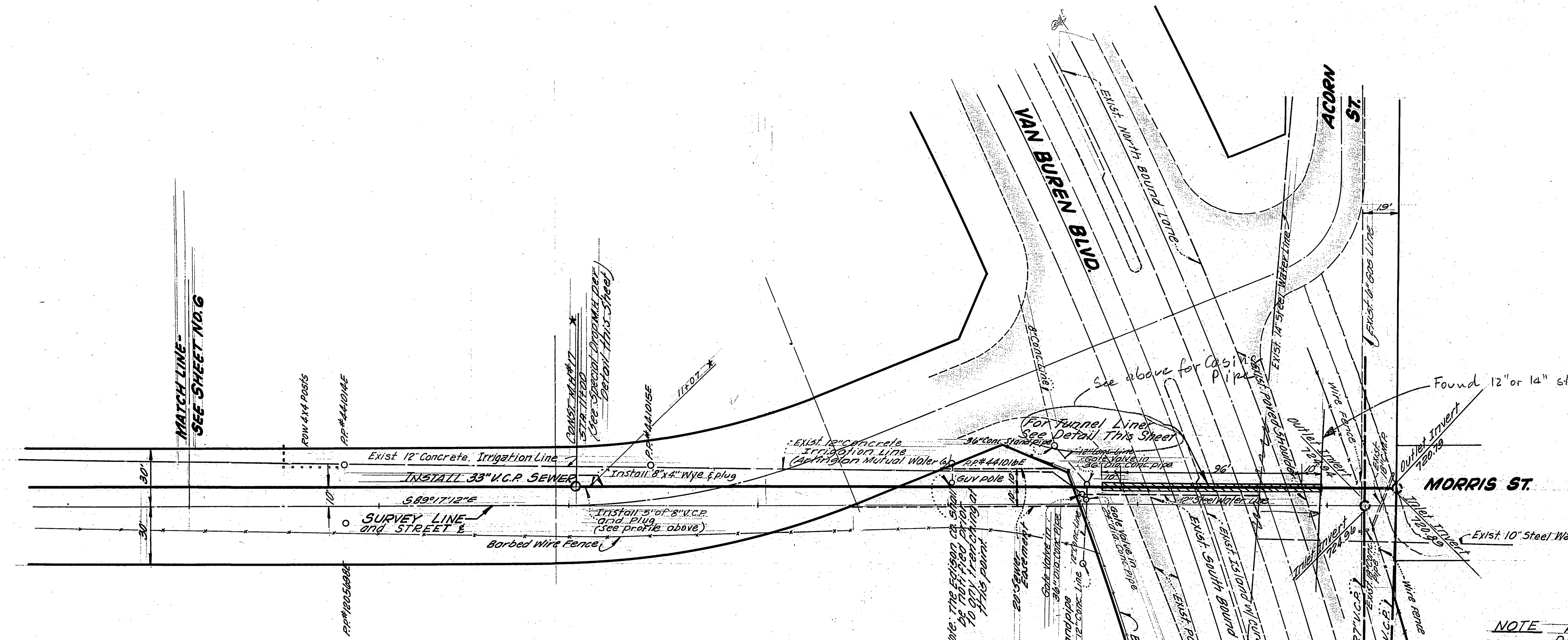


PROFILE - MORRIS STREET
 Scale: Horizontal 1"=40'
 Vertical 1"=4'

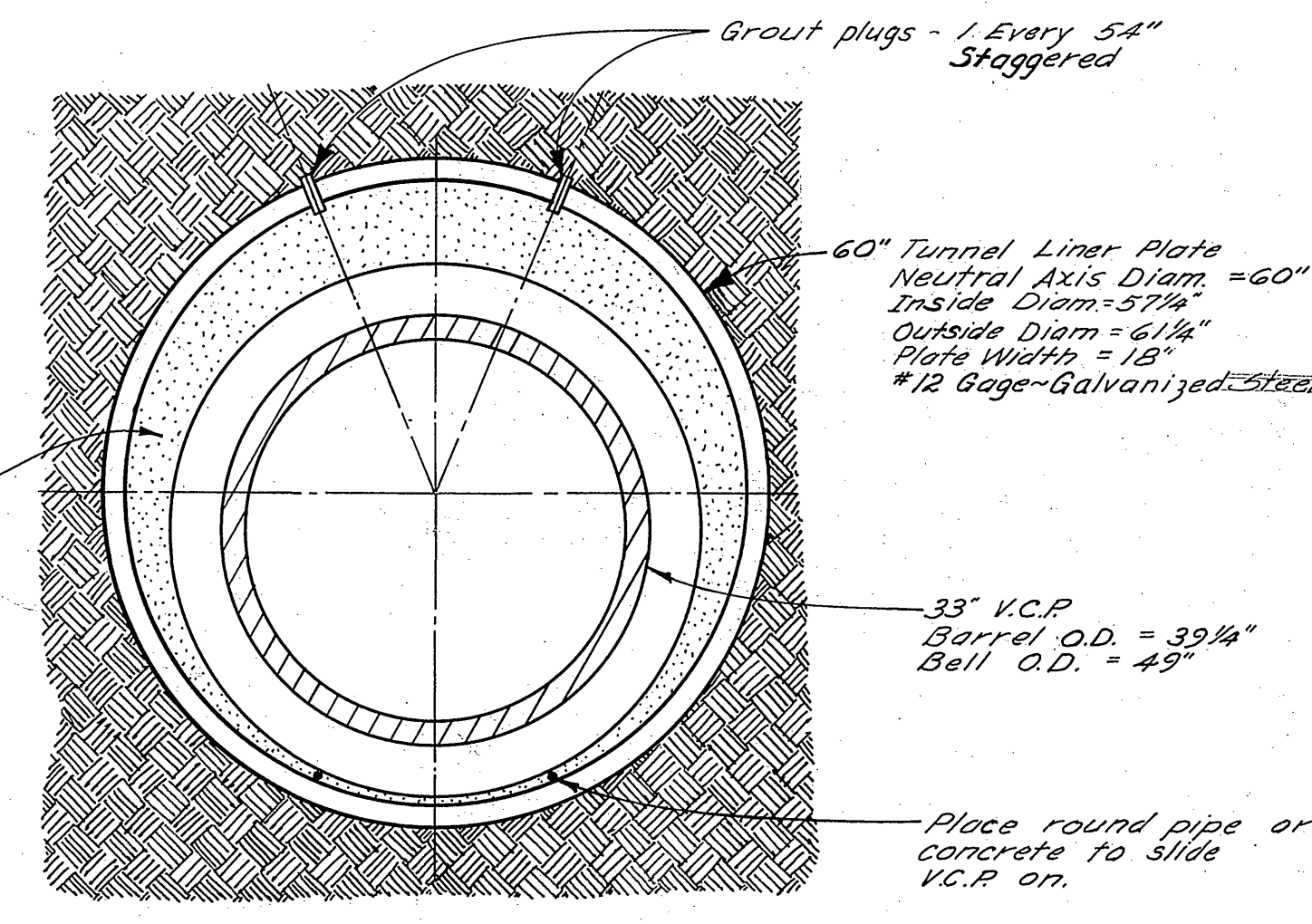


SECTION A-A SECTION B-B
SPECIAL DROP MANHOLE DETAIL
 Scale: 3/8" = 1'-0"

BENCH MARK -
 Cut Nail West Face power pole No. 612A14E, Sta. -0+46
 33' West, Elev. 739.57
 Ref. Arlanza trunk Sewer Interceptors - Line B
 Plan & Profile Proj. No. S-613 Sheet II of 14



PLAN - MORRIS STREET
 Scale: 1"=40'



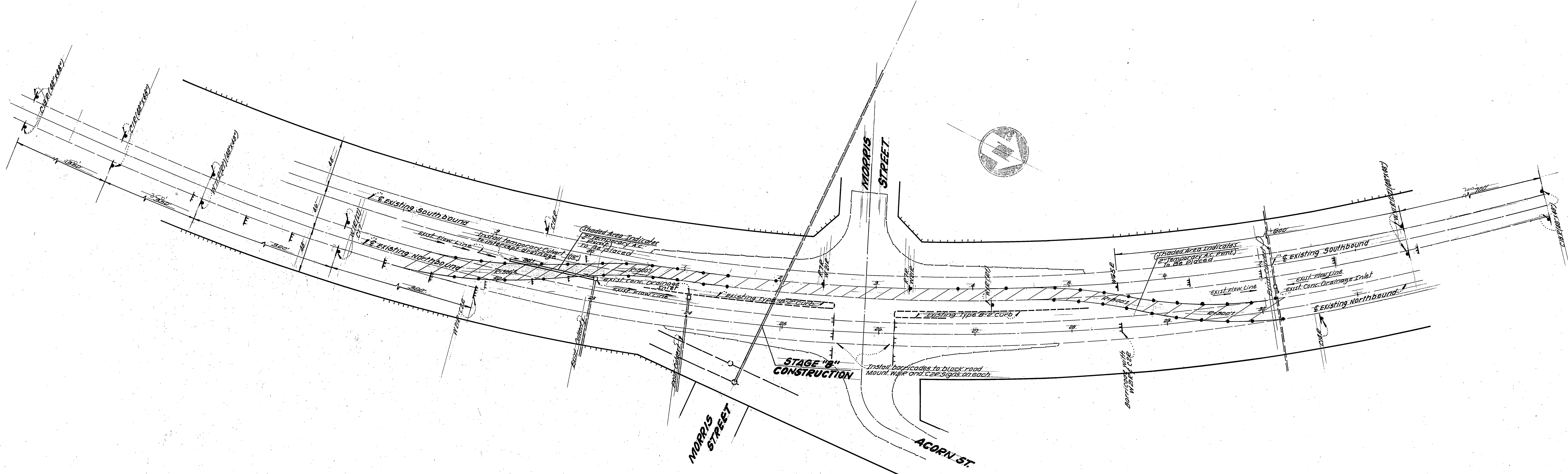
TUNNEL SECTION Not Built FOR VAN BUREN BLVD. CROSSING

NOTE
 1. Case III Bedding shall be used along the entire length of sewer to be installed on Doolittle & Morris.
 2. The contractor shall break into the existing M.H. Sta. 1513255 and reshape existing channel for smooth flow.
 3. The contractor shall notify Mr. Montigel with the Arlington Mutual Water Company prior to construction on Morris Street. Phone: 6332845.

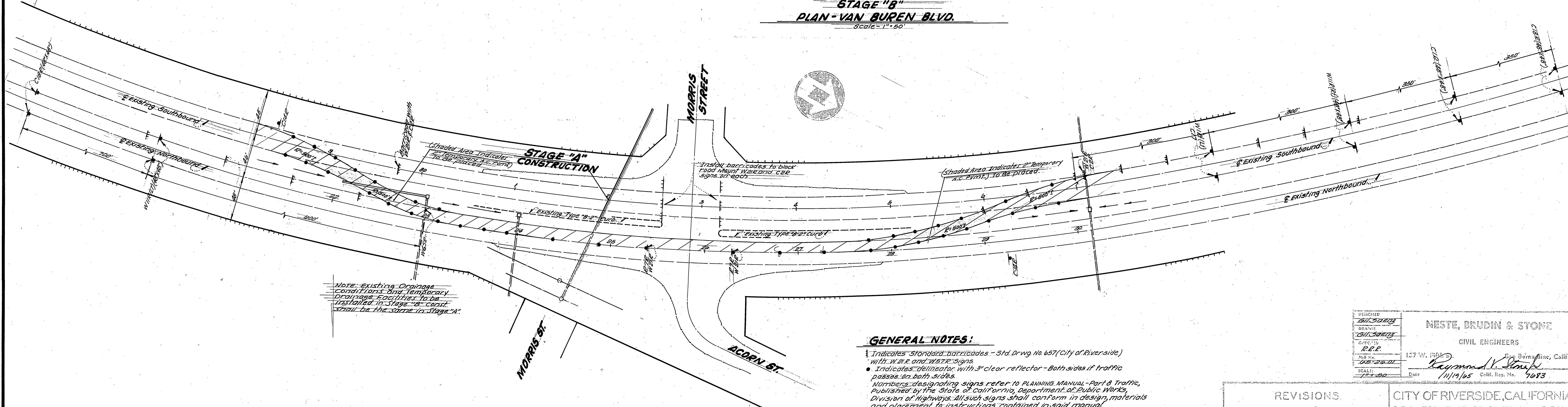
NOTE - VAN BUREN AT MORRIS
 pavement and base to be replaced 4" AC over 15" class 3 AB

NOTE For Open cut Defour Detail in this intersection - SEE SHEET 8

CITY OF RIVERSIDE, CALIFORNIA DEPARTMENT OF PUBLIC WORKS			VAN BUREN OUTFALL IN MORRIS STREET FROM DOOLITTLE AVENUE TO VAN BUREN BLVD.		PROJECT NO. S-629
APPROVED BY	BY	DATE	APPROVED BY	DATE	SHEET 7 OF 8
OFFICE ENGINEER	WAG	12-22	DIRECTOR OF PUBLIC WORKS	12-22-68	FILE NO.
PARK DEPARTMENT					
TRAFFIC DIVISION					
ASSISTANT CITY ENG.	TRG	12-22			
DESIGNED BY	DRAWN BY	CHECKED BY	DATE: 12-22-68		
			HORIZ. SCALE: 1"=40'		VERT. SCALE: 1"=4'



STAGE "B"
PLAN - VAN BUREN BLVD.
 Scale = 1" = 50'



STAGE "A"
PLAN - VAN BUREN BLVD.
 Scale = 1" = 50'

Note: Existing Drainage Conditions and Temporary Drainage Conditions to be installed in Stage "A" shall be the same in Stage "A"

GENERAL NOTES:
 1. Indicates Standard barricades - Std. Drwg. No. 657 (City of Riverside) with W.A.R. and W.S.T.E. signs.
 2. Indicates delineator with 3" clear reflector - Both sides if traffic passes on both sides.
 Numbers designating signs refer to PLANNING MANUAL - Part 6 Traffic, Published by the State of California, Department of Public Works, Division of Highways. All such signs shall conform in design, materials and placement to instructions contained in said manual.

No Detour has been made and No open cut has been constructed per this sheet.
 Hans
 7-23-66

DESIGNED BY Bill Siders	DRAWN BY Bill Siders	CHECKED BY E.P.P.	SCALE 1" = 50'
NESTE, BRUDIN & STONE CIVIL ENGINEERS 137 W. 7th St. Riverside, Calif.			DATE 11/19/65

REVISIONS			CITY OF RIVERSIDE, CALIFORNIA DEPARTMENT OF PUBLIC WORKS
MARK	DATE	DESCRIPTION	
			VAN BUREN OUTFALL IN MORRIS STREET FROM DOOLITTLE AVE. TO VAN BUREN BLVD. TRAFFIC CONTROL FOR OPEN CUT VAN BUREN BLVD.

DESIGNED BY Bill Siders	DRAWN BY Bill Siders	CHECKED BY E.P.P.	DATE 12-22-65
SUBMITTED BY William B. Hansen	PARK DEPT. TRAFFIC DIV.	APPROVED BY [Signature]	PROJECT NO. 5-629