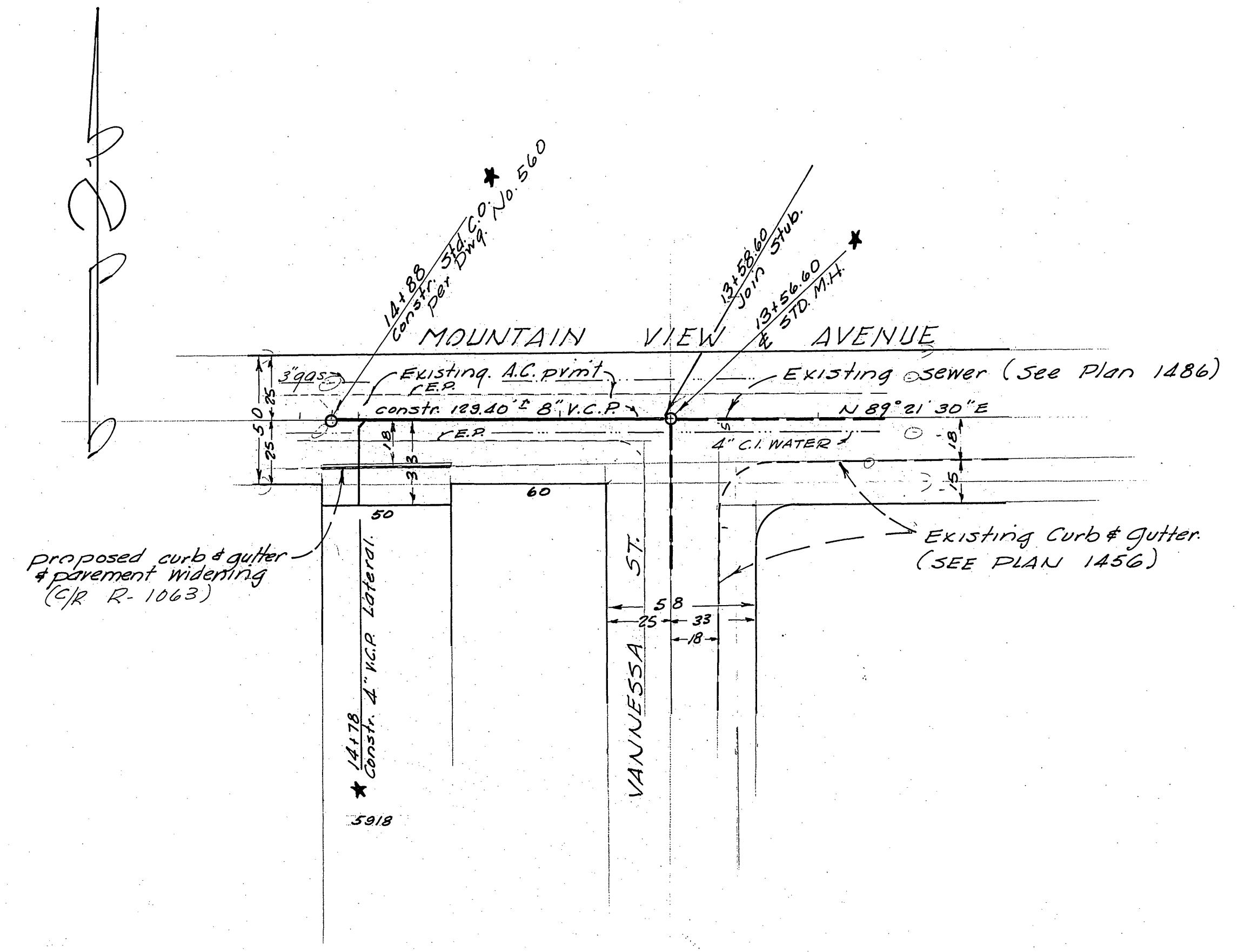


PROFILE  
 HORIZ. SCALE 1" = 40'  
 VERT. SCALE 1" = 4'

PLAN  
 SCALE 1" = 40'



GENERAL NOTES

1. Construction shall be in accordance with the City of Riverside, Department of Public Works, Standard Specifications No. 461 and Standard drawings.
2. It shall be the responsibility of the Contractor to clear the right of way in accordance with the provisions of law as it affects each utility including irrigation lines and appurtenances and at no cost to the City.
3. Joints in vitrified clay pipe sewers shall conform to A.S.T.M. Standard C-425-60T or the latest revision thereof.
4. Pipe shall be bedded per Case II, Standard Drawing No. 492 unless otherwise specified on the plans.
5. Location of wyes and laterals to be determined in the field.
6. All stubs and laterals to be constructed in accordance with Standard Drawing No. 562. Stubs shall be plugged and capped.
7. B.M. - P.K. nail, one foot east of B.C.R. Curb Return @ S.E. Corner of Mountain View Avenue and Vanessa Street. (STA. 13+17.60 ± to Curb Mtn. View) U.S.G.S. EL. = 789.66

Proposed curb & gutter & pavement widening (C.R. R. 1063)

Existing Curb & Gutter (SEE PLAN 1456)

ROBERT L. TAYLOR  
 CIVIL ENGINEER

Approved by:  
*Robert L. Taylor*  
 RCE 10270

★ AS BUILT 12-3-65 HB

CITY OF RIVERSIDE, CALIFORNIA DEPARTMENT OF PUBLIC WORKS			SEWER PLAN & PROFILE MOUNTAIN VIEW AVE		PROJECT NO. 5-631
APPROVED BY OFFICE ENGINEER PARK DEPARTMENT TRAFFIC DIVISION ASSISTANT CITY ENG.	BY <i>[Signature]</i>	DATE 7-27-65	APPROVED BY DIRECTOR OF PUBLIC WORKS DATE 7-27-65	STA. 13+58.60 to 14+88. (100' W. of Vanessa)	
DESIGNED BY	DRAWN BY	CHECKED BY	HORIZ. SCALE: 1" = 40'		SHEET 1 OF 1
			VERT. SCALE: 1" = 4'		FILE NO.