

NOTE
 Existing 10" VCP to be removed or crushed in place from Sta. 3+20 to Sta. 6+55 after New 12" VCP sewer is in service.

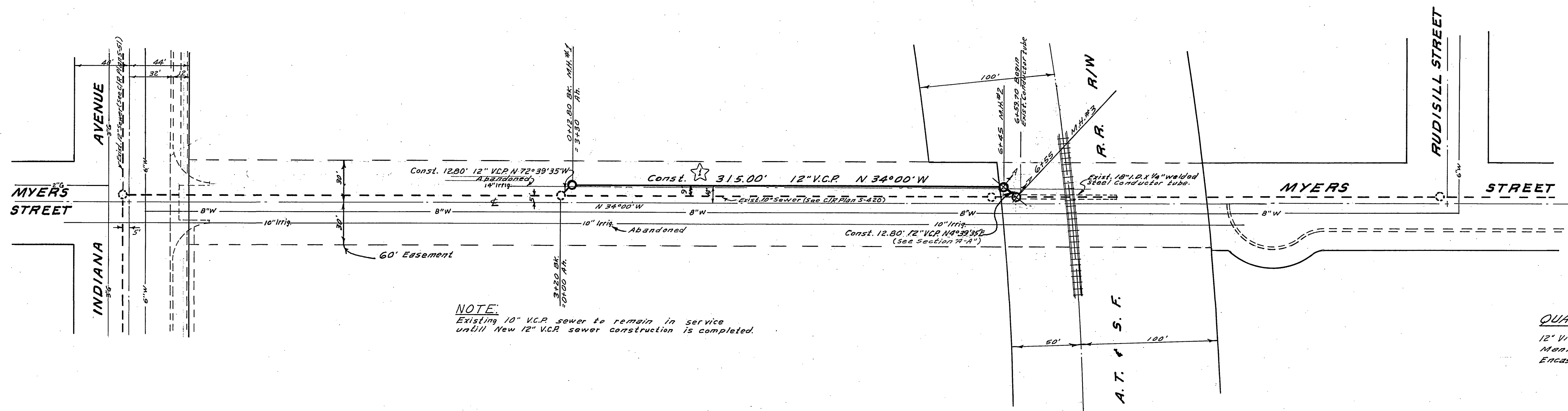
BENCH MARK:
 Elev. 823.72, spike on RR # 2526 East side Myers opp. house # 3085.

- GENERAL NOTES**
- Construction shall be in accordance with the City of Riverside, Department of Public Works, Standard Specifications No. 701 and Standard Drawings.
 - It shall be the responsibility of the contractor to locate the right of way in accordance with the city engineer's file as it affects each lot and to provide adequate drainage and appearance and at no cost to the city.
 - Joints in vitrified clay pipe shall conform to ASTM Standard C-425-60T, or its latest revision thereof.
 - Pipe shall be bedded per Section 11, Standard Drawing No. 457, unless otherwise specified on plans.
 - Location of manholes shall be determined in the field.
 - All stubs and fittings to be constructed in accordance with Standard Drawing No. 502. Stubs shall be lagged and capped.
 - Manhole frames shall conform to the latest revision of Standard Drawing No. 457.
 - Laterals shall be 12" and open to the main sewer line.
 - Prior to construction of sewer, contractor shall contact existing sewer and contact Engineer for location of existing sewer.

QUANTITY ESTIMATE

12" Vitrified Clay Pipe	341 LF
Manhole Standard No. 500	3 EA
Encasement Std. No. 580	158 LF

NOTE
 The contractor is to enter into written agreement with The Santa Fe Railway Co. for construction in R.R. R/W and to call the Santa Fe office 48 hr prior to construction, Turner 4-2111.



NOTE
 Existing 10" VCP sewer to remain in service until New 12" VCP sewer construction is completed.

APPROVED FOR CONSTRUCTION FROM 3+20 BK. TO 6+40.
 W. J. [Signature] 7-9-65
 DIRECTOR OF PUBLIC WORKS DATE

ALBERT A. WEBB ASSOCIATES CIVIL ENGINEERS RIVERSIDE, CALIFORNIA APPROVED BY: [Signature] DATE: 7/2/65 R.E. No. 9876	CITY OF RIVERSIDE, CALIFORNIA DEPARTMENT OF PUBLIC WORKS APPROVED BY: [Signature] DATE: 7-15-65 OFFICE ENGINEER PARK DEPARTMENT TRAFFIC DIVISION ASSISTANT CITY ENG. [Signature]	SEWER PLAN & PROFILE EASEMENT BETWEEN INDIANA AVE. & T.S.F. RR. MYERS ST. VACATED		PROJECT NO. S-632
		HORIZ. SCALE: 1" = 50' VERT. SCALE: 1" = 5'		SHEET 1 OF 1 FILE NO. 65-192-B