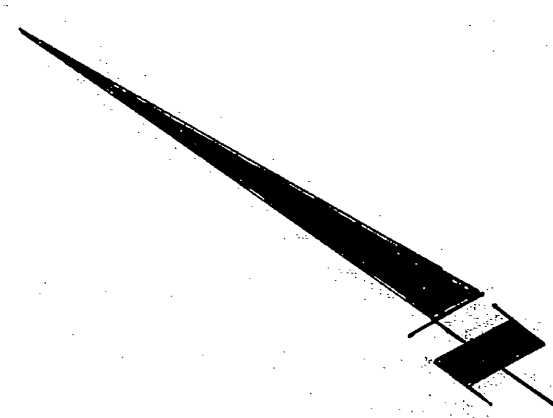
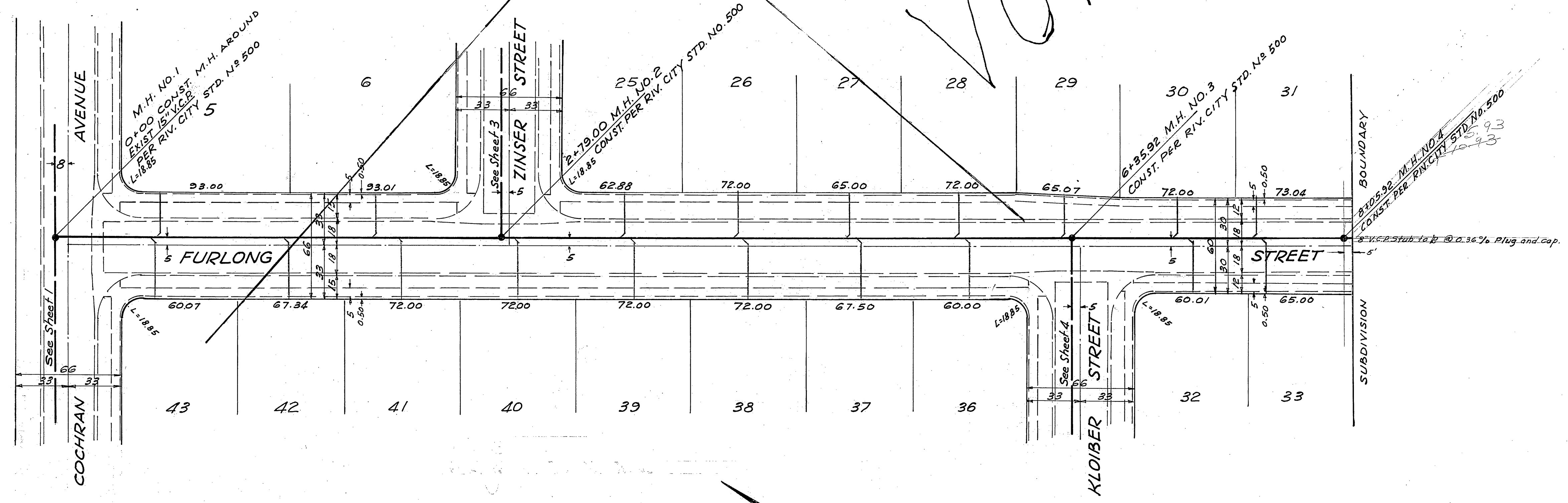
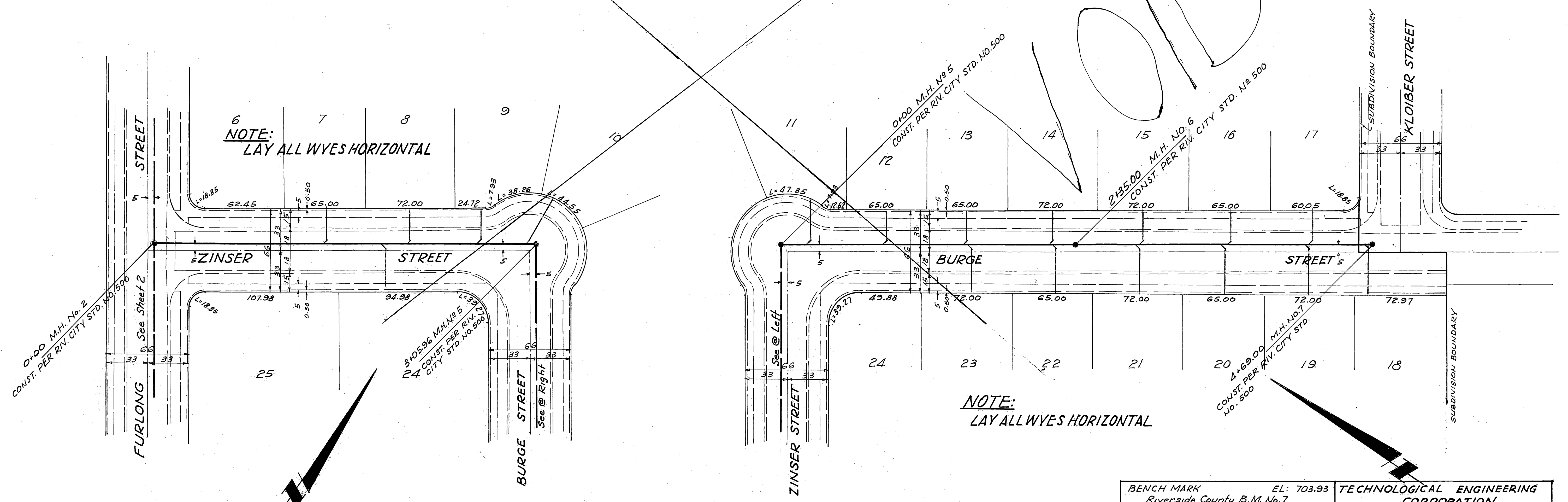
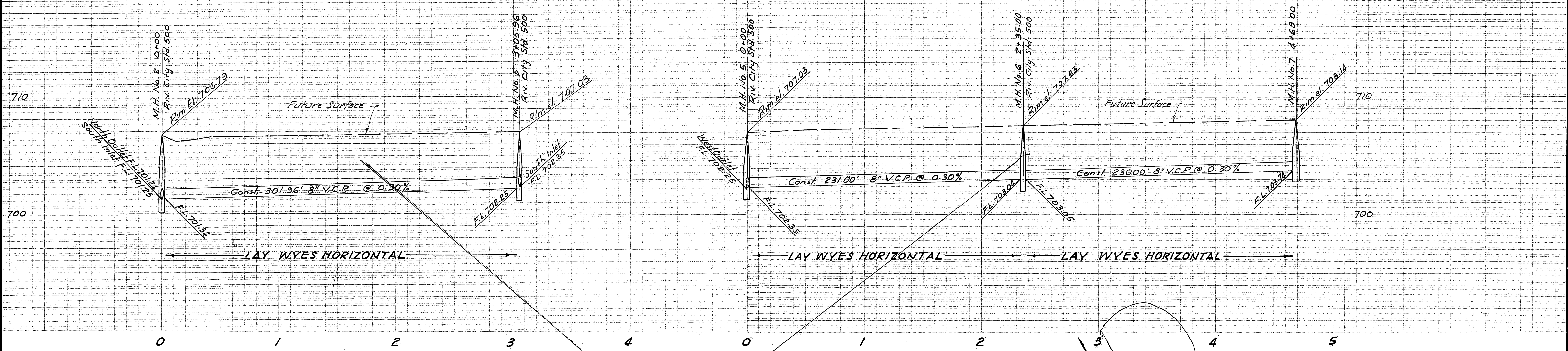


VOID



BENCH MARK Riverside County B.M. No. 7 Chiseled "X" on S.E. Corner of bottom conc. step @ main entrance to church on N.W. corner of Hole Ave. & Jones Ave.		EL: 703.93 APPROVED BY: <i>[Signature]</i> DATE: 7-19-45	<b>TECHNOLOGICAL ENGINEERING CORPORATION</b> PICO RIVERA, CALIFORNIA R.E. 7830 APPROVED BY: <i>[Signature]</i> DATE: 7-19-45	<b>SEE S-776</b>
<b>CITY OF RIVERSIDE, CALIFORNIA</b> <b>DEPARTMENT OF PUBLIC WORKS</b>		<b>SEWER IMPROVEMENTS</b> <b>TRACT NO. 3331</b> <b>FURLONG STREET</b> <b>COCHRAN AVE. TO 7+61.00</b>		PROJECT NO. <b>5-639</b>
APPROVED BY: <i>[Signature]</i> DATE: 9-23 OFFICE ENGINEER PARK DEPARTMENT TRAFFIC DIVISION ASSISTANT CITY ENG.		APPROVED BY: <i>[Signature]</i> DATE: 10-7-45 DIRECTOR OF PUBLIC WORKS		SHEET <b>2</b> OF <b>4</b>
DESIGNED BY: _____ DRAWN BY: _____ CHECKED BY: <i>[Signature]</i>		HORIZ. SCALE: 1" = 40' VERT. SCALE: 1" = 4'		FILE NO.





BENCH MARK EL: 703.93  
 Riverside County B.M. No. 7  
 Chiseled "X" on S.E. corner of bottom conc. step @ main entrance to church on N.W. corner of Hole Ave. & Jones Ave.

TECHNOLOGICAL ENGINEERING CORPORATION  
 PICO RIVERA, CALIFORNIA RE. 7830  
 APPROVED BY [Signature] DATE 10-7-65

CITY OF RIVERSIDE, CALIFORNIA  
 DEPARTMENT OF PUBLIC WORKS

SEWER IMPROVEMENTS  
 TRACT NO. 3331  
 ZINSER STREET  
 FURLONG ST. TO BURGE ST.  
 BURGE STREET  
 ZINSER ST. TO KLOIBER ST.

PROJECT NO.  
 S-639

APPROVED BY [Signature] DATE 10-7-65  
 OFFICE ENGINEER  
 PARK DEPARTMENT  
 TRAFFIC DIVISION  
 ASSISTANT CITY ENG. [Signature] DATE 10-7-65

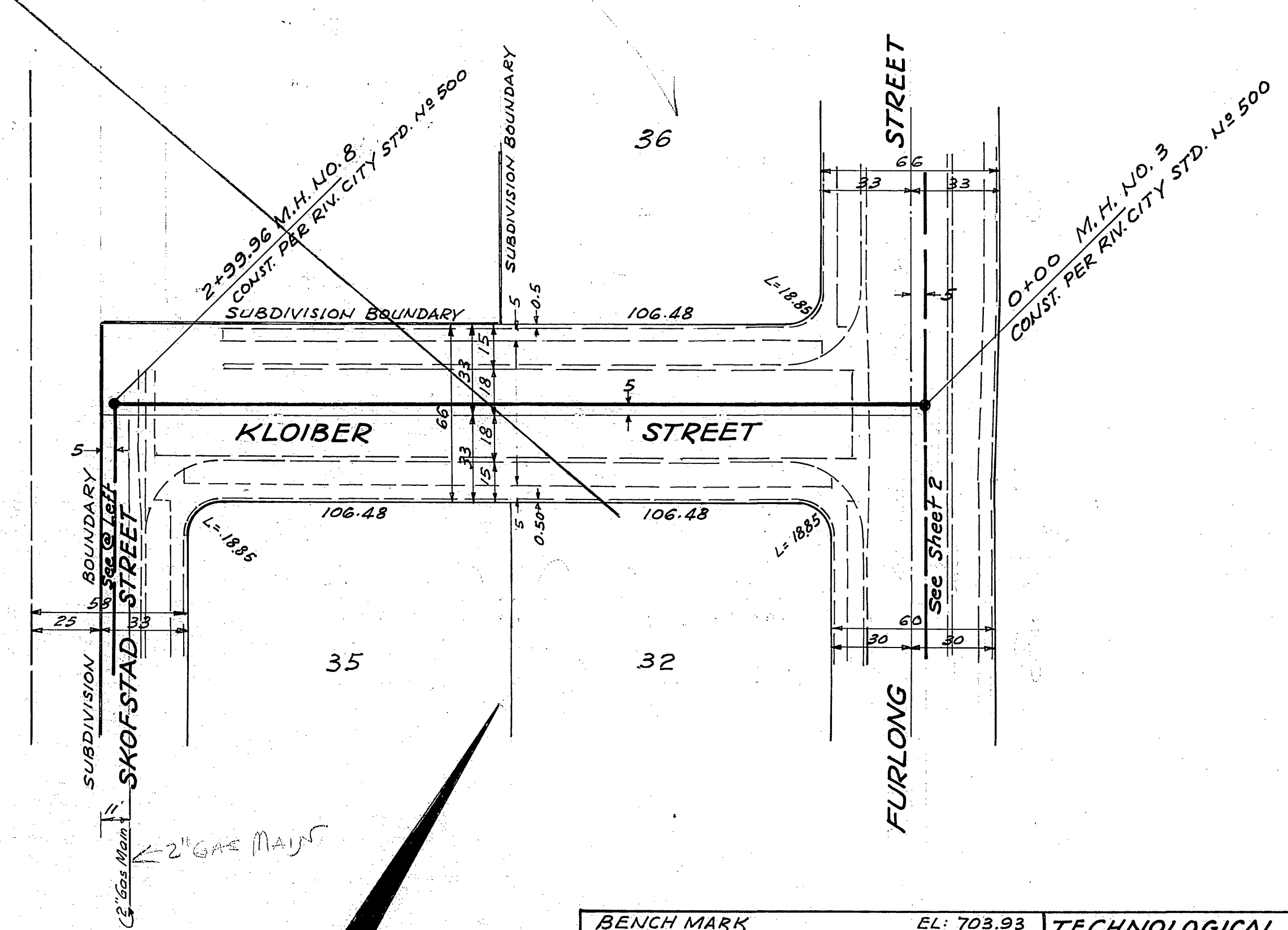
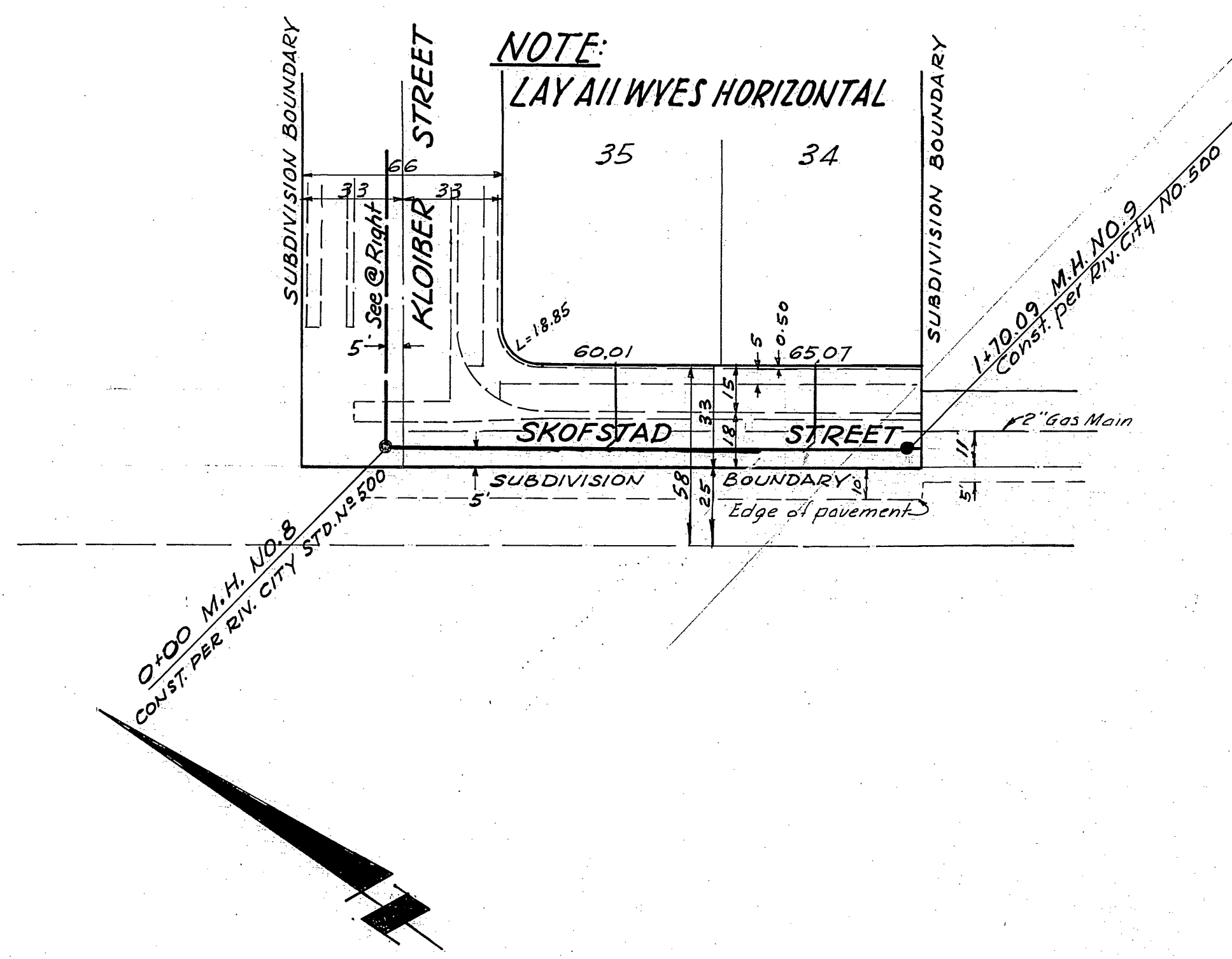
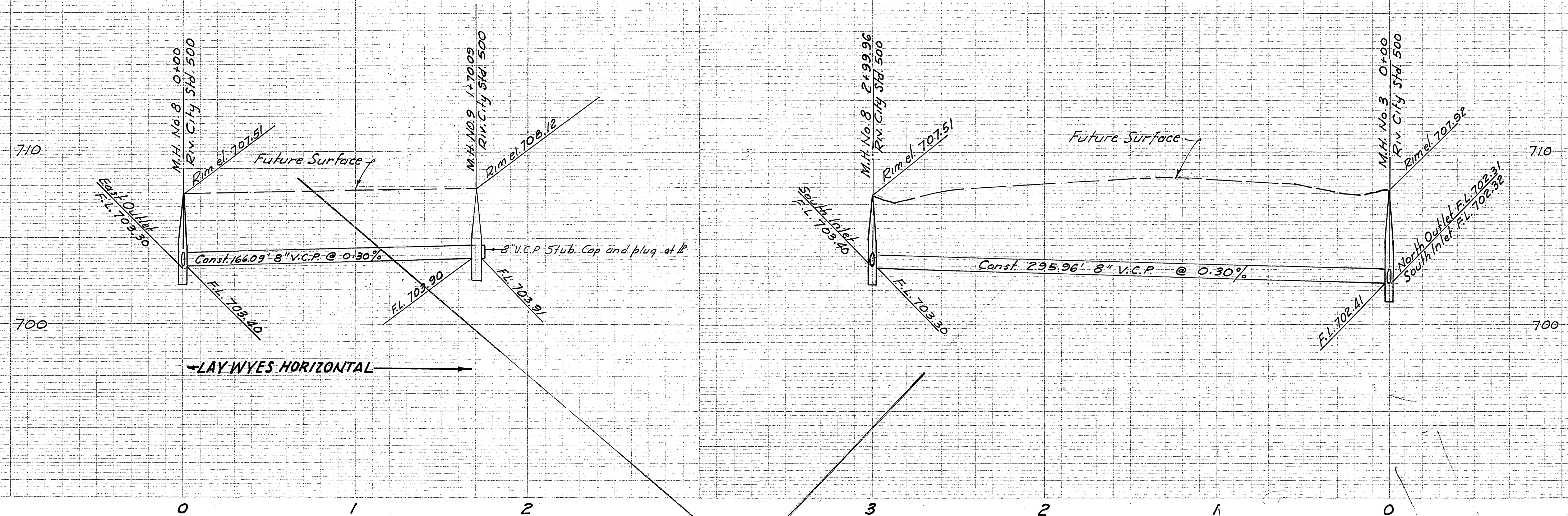
APPROVED BY [Signature] DATE 10-7-65  
 DIRECTOR OF PUBLIC WORKS

SHEET 3 OF 4  
 FILE NO.

MARK	REVISIONS	APPR.	DATE

HORIZ. SCALE: 1" = 40' VERT. SCALE: 1" = 4'





BENCH MARK EL: 703.93  
 Riverside County B.M. No. 7  
 Chiseled "X" on S.E. corner of bottom conc. step @ main entrance to church on N.W. corner of Hole Ave. & Jones Ave.

TECHNOLOGICAL ENGINEERING CORPORATION  
 PICO RIVERA, CALIFORNIA R.E. 7830  
 APPROVED BY: [Signature] DATE 7/9/65

CITY OF RIVERSIDE, CALIFORNIA  
 DEPARTMENT OF PUBLIC WORKS

SEWER IMPROVEMENTS  
 TRACT NO. 3331  
 SKOFSTAD STREET  
 KLOIBER ST. TO 11+25.00  
 KLOIBER STREET  
 FURLONG ST. TO SKOFSTAD ST.

SEE S-776  
 PROJECT NO. S-639  
 SHEET 4 OF 4  
 FILE NO.

MARK	REVISIONS	APPR. DATE	DESIGNED BY	DRAWN BY	CHECKED BY

APPROVED BY: [Signature] DATE 7-29  
 OFFICE ENGINEER  
 PARK DEPARTMENT  
 TRAFFIC DIVISION  
 ASSISTANT CITY ENG. [Signature] DATE 7-17

APPROVED BY: [Signature] DATE 10-7-65  
 DIRECTOR OF PUBLIC WORKS

HORIZ. SCALE: 1" = 40' VERT. SCALE: 1" = 4'