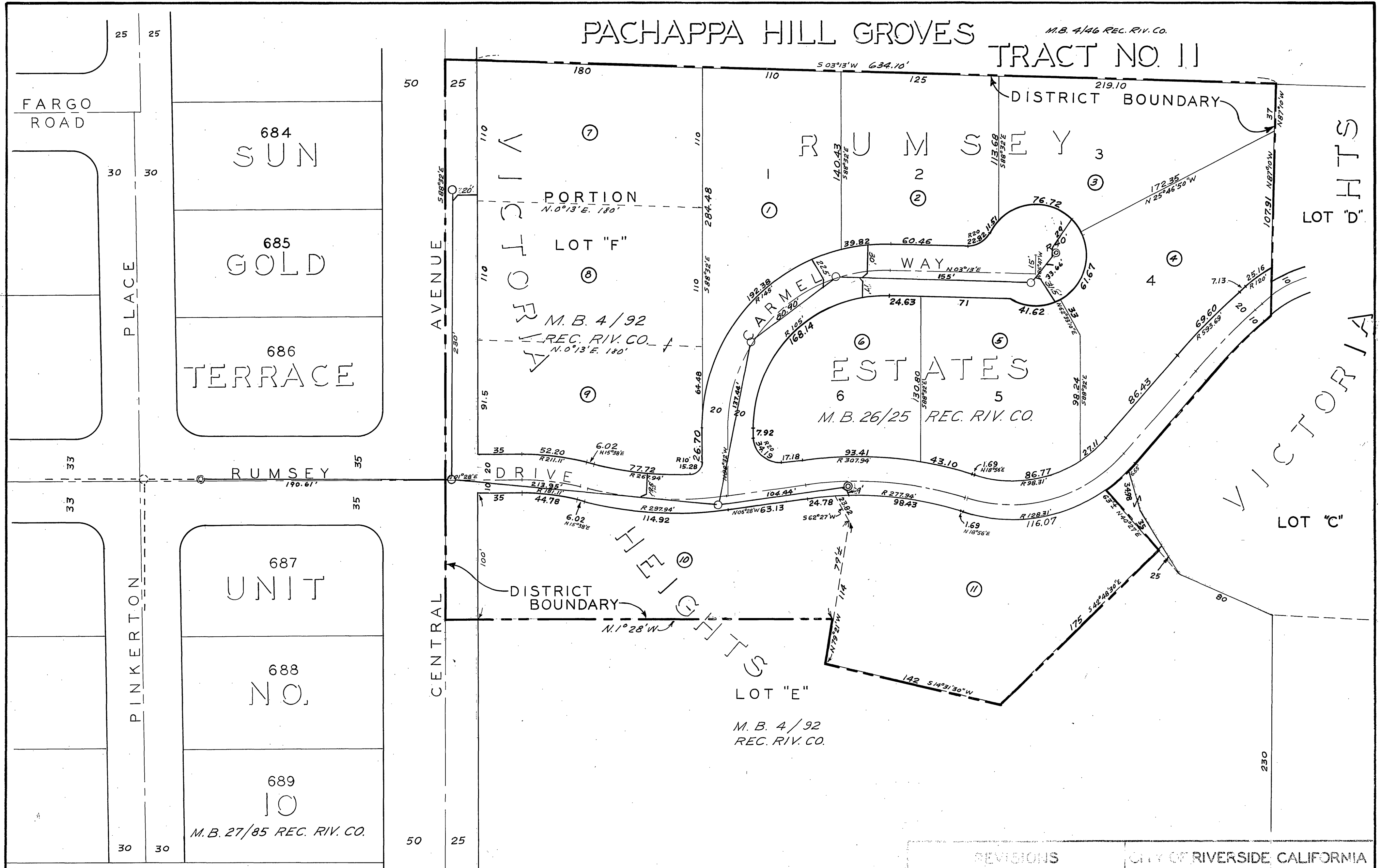


PACHAPPA HILL GROVES

M.B. 4/46 REC. RIV. CO.
TRACT NO. 11



SCALE: 1" = 50'

MAP SHOWING THE LANDS INCLUDED WITHIN THE ASSESSMENT DISTRICT TO BE BENEFITED BY THE CONSTRUCTION OF SANITARY SEWERS

REVISIONS			CITY OF RIVERSIDE, CALIFORNIA DEPARTMENT OF PUBLIC WORKS	
MARK	DATE	DESCRIPTION		
			RUMSEY DRIVE AND CARMEL WAY SANITARY SEWER DISTRICT	
DESIGNED BY: H.H. DRAWN BY: D.B. & H.B. CHECKED BY: S.B.			APPROVED BY: <i>[Signature]</i> DIRECTOR OF PUBLIC WORKS DATE: Jan 9, 1957	
ASSISTANT CITY ENGINEER			S-63A SHEET 1 OF 1	