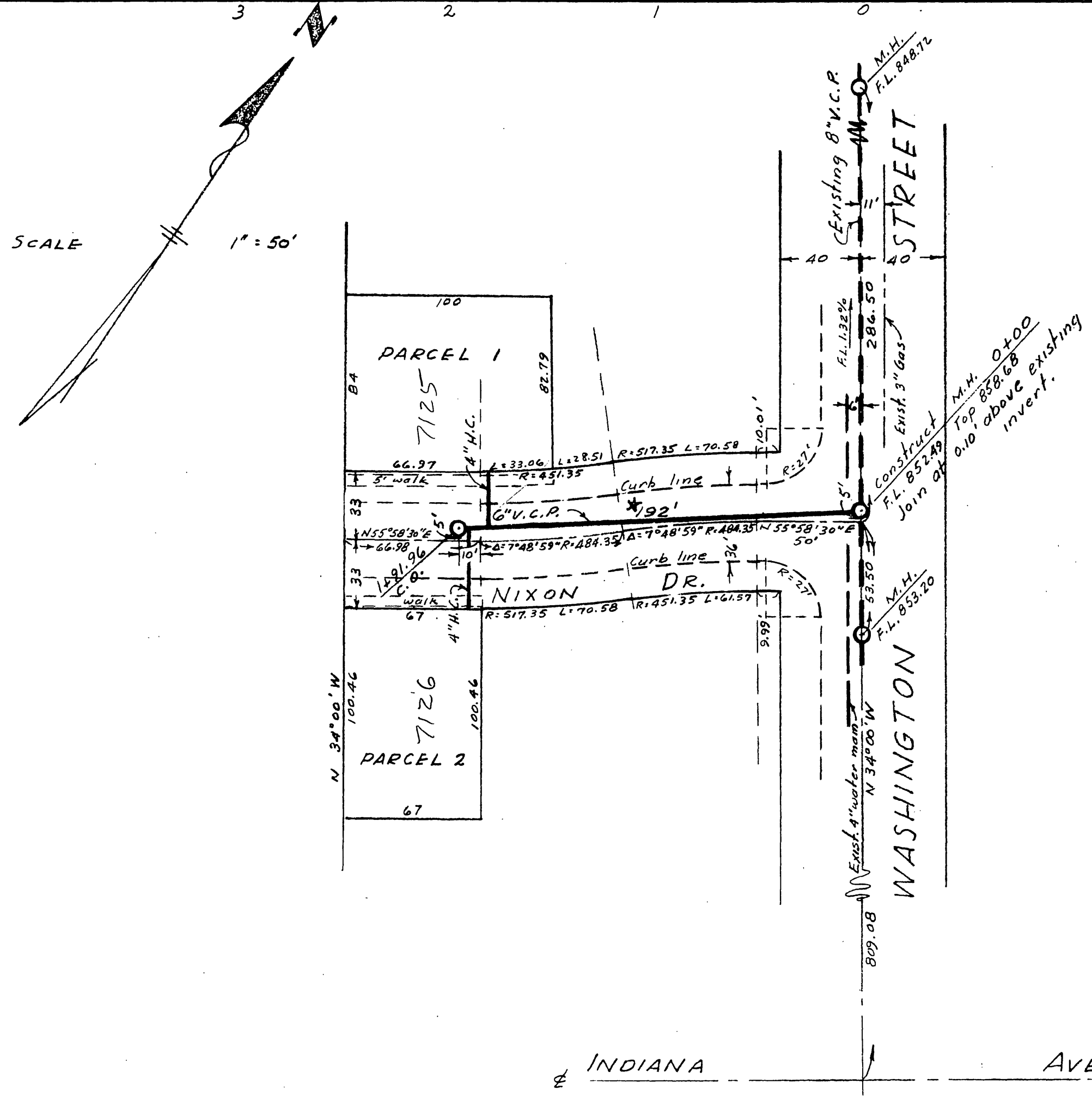
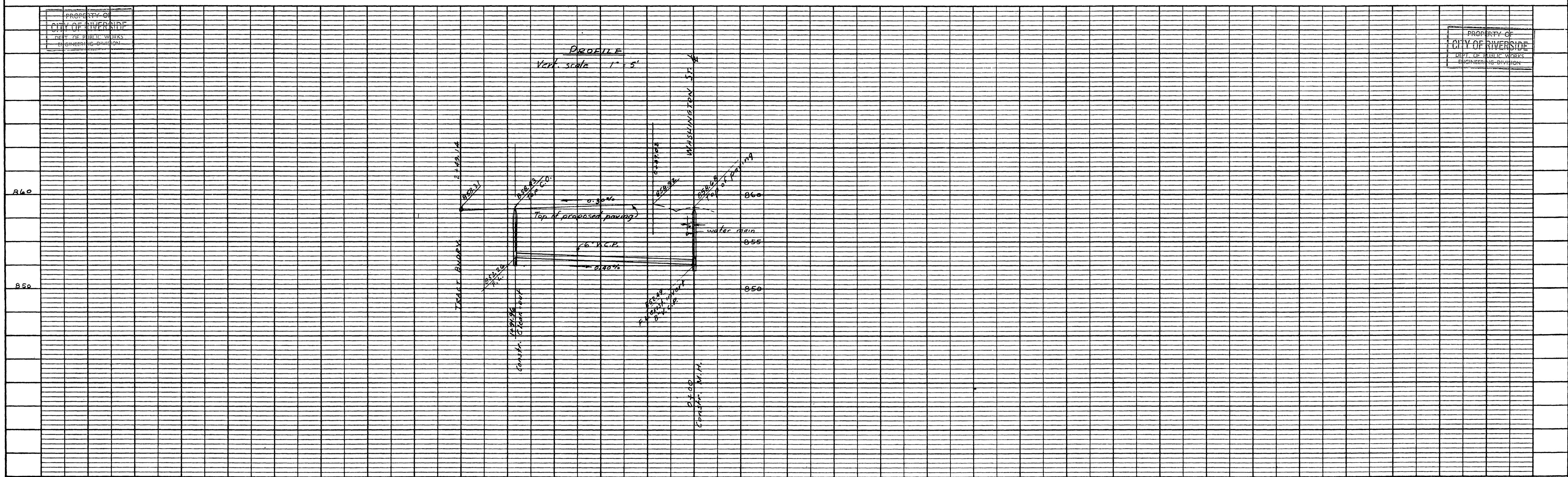


PROPERTY OF
 CITY OF RIVERSIDE
 DEPT. OF PUBLIC WORKS
 ENGINEERING DIVISION

PROPERTY OF
 CITY OF RIVERSIDE
 DEPT. OF PUBLIC WORKS
 ENGINEERING DIVISION

PROFILE
 Vert. scale 1" = 5'



BENCH MARK - PK NW CURB AT ORCHARD & HOOVER - ELEV. 839.74
 4" HOUSE CONNECTIONS TO BE LOCATED IN FIELD.
 ESTIMATE OF QUANTITIES
 6" V.C.P. 192 LIN. FT.
 4" V.C.P. 66 LIN. FT.
 STD. MANHOLE 1
 STD. CLEANOUT 1

PREPARED BY ALBERT A. WEBB ASSOCIATES
 CIVIL ENGINEERS
 APPROVED BY *E. N. Webb* DATE 12/31/56
 CITY OF RIVERSIDE, CALIFORNIA
 DEPARTMENT OF PUBLIC WORKS

SEWER PLAN & PROFILE
 OF
 NIXON DRIVE
 IN
 RECORD OF SURVEY

HORIZ. SCALE 1" = 50' VERT. SCALE 1" = 5'
 APPROVED BY *E. N. Webb*
 DIRECTOR OF PUBLIC WORKS
 DATE Jan 9, 1957
 NO. S-64
 SHEET 1 OF 1

PROPERTY OF
 CITY OF RIVERSIDE
 DEPT. OF PUBLIC WORKS
 ENGINEERING DIVISION

PROPERTY OF
 CITY OF RIVERSIDE
 DEPT. OF PUBLIC WORKS
 ENGINEERING DIVISION

★ "AS BUILT" 7-15-59, H.B.M.

W.O. 56-414 F.B. 321

PROFILE	
SUBMITTED	BY
NOTED	DATE
DESIGNED	
CHECKED	
IN CHARGE	
DATE	

PLAN	
SUBMITTED	BY
NOTED	DATE
DESIGNED	
CHECKED	
IN CHARGE	
DATE	