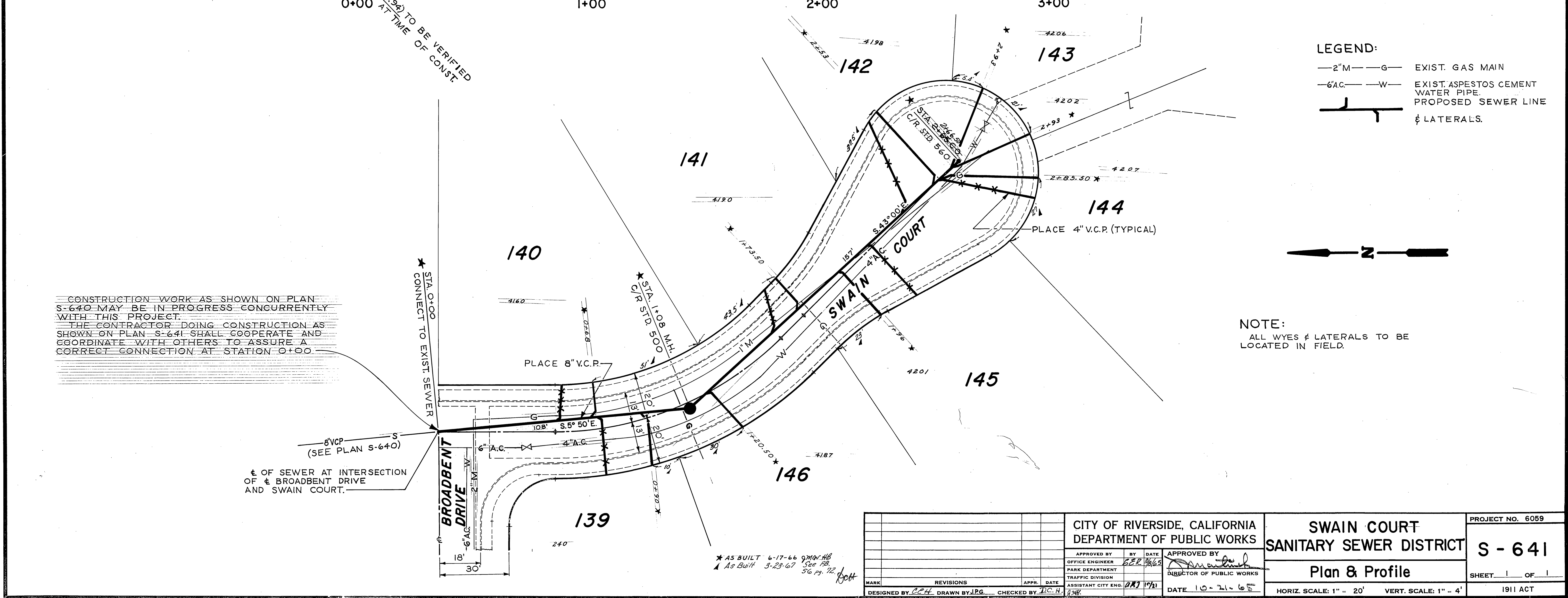


B.M. ELEV. 1217.89' PK. NAIL IN LEAD ON CENTER OF S.W. CURB RETURN AT BROADBENT DRIVE AND QUAIL ROAD.

F.B. 687/25, 5-9-60-66



CONSTRUCTION WORK AS SHOWN ON PLAN S-640 MAY BE IN PROGRESS CONCURRENTLY WITH THIS PROJECT. THE CONTRACTOR DOING CONSTRUCTION AS SHOWN ON PLAN S-641 SHALL COOPERATE AND COORDINATE WITH OTHERS TO ASSURE A CORRECT CONNECTION AT STATION 0+00.

± OF SEWER AT INTERSECTION OF ± BROADBENT DRIVE AND SWAIN COURT.

* AS BUILT 6-17-66 9700148
 ▲ As Built 3-23-67 See FB 56 pg. 72. Boff

CITY OF RIVERSIDE, CALIFORNIA DEPARTMENT OF PUBLIC WORKS		SWAIN COURT SANITARY SEWER DISTRICT		PROJECT NO. 6059
APPROVED BY OFFICE ENGINEER PARK DEPARTMENT TRAFFIC DIVISION	BY DATE BER 10/65	APPROVED BY DIRECTOR OF PUBLIC WORKS	S - 641	
DESIGNED BY CCH		DRAWN BY J.P.G.		CHECKED BY D.C.H.
DATE 10-21-65		HORIZ. SCALE: 1" = 20'		VERT. SCALE: 1" = 4'
SHEET 1 OF 1		1911 ACT		