

ASSESSMENT NO. 512

DIAGRAM

EXHIBITING SANITARY SEWER DISTRICT  
IN THE CITY OF RIVERSIDE, CALIFORNIA, AND THE WORK WHICH HAS BEEN DONE  
PURSUANT TO THE CONTRACT BETWEEN THE SUPERINTENDENT OF STREETS OF  
SAID CITY AND WARRIACH CONSTRUCTION CO. DATED MAY 22, 1948,  
FOR THE CONSTRUCTION OF SANITARY SEWER AND AMBITANCE

AS IS MORE PARTICULARLY DESCRIBED IN SAID CONTRACT, TO WHICH REFERENCE  
IS HEREBY MADE FOR FURTHER PARTICULARS.  
SAID DIAGRAM ALSO SHOWS EACH SEPARATE LOT OR PARCEL OF LAND WITHIN THE  
LIMITS OF THE ASSESSMENT DISTRICT, AND THE DIMENSIONS OF EACH SUCH LOT OR  
PARCEL OF LAND, AND THE RELATIVE LOCATION OF THE SAME TO THE WORK DONE.  
EACH LOT OR PARCEL OF LAND IS NUMBERED IN A CIRCLE TO CORRESPOND TO THE  
ASSESSMENT NUMBERS.  
HEREIN FIGURES NEXT TO PROPERTY LINES SHOW LENGTH OF SAID LINES IN FEET  
AND DECIMALS THEREOF.  
THE MARK (') MEANS FEET.  
PROPERTY LINES THAT DIFFER FROM THE RECORDED SUBDIVISIONS ARE SHOWN BY  
BROKEN LINES.  
THE DISTRICT BENEFITED IS BOUNDED BY A HEAVY DASHED LINE.  
PROPERTY INCLUDED IN THIS ASSESSMENT IS SHOWN ON THE FOLLOWING MAPS  
FILED IN THE OFFICE OF THE COUNTY RECORDER:  
UNIVERSITY HILLS MAP NO. 3, M.R. 25, P.C. 29 RIV. CO. 1941  
RECORD OF SURVEY 2478 RIV. CO. 1941

HEREIN THE DIFFERENT KINDS OF WORK  
PERFORMED ARE SHOWN AS FOLLOWS:

- MAIL COVER
- HOUSE CONNECTION LATERAL
- 12" WYE
- MANHOLE
- CLEANOUT

HERE FOLLOWS A STATEMENT OF AMOUNTS OF  
DIFFERENT KINDS OF WORK DONE PURSUANT TO  
THE HERE-IN-BEFORE IDENTIFIED CONTRACT  
AND TO RESOLUTION OF INTENTION NO. 10483,  
ADOPTED BY THE CITY COUNCIL OF THE CITY  
OF RIVERSIDE, CALIFORNIA ON THE 23RD DAY  
OF FEBRUARY, 1948.

- 265 LB. 12" VITRIFIED CLAY PIPE
- 200 LB. 12" VITRIFIED CLAY PIPE
- 4 EA. 12" WYES
- 1 EA. MANHOLE-STD. DWS. NO. 500
- 1 EA. CLEANOUT-STD. DWS. NO. 500
- 1500 SQ. PAVEMENT REPLACEMENT

I HEREBY CERTIFY THAT THE ABOVE WORK WAS DONE IN ACCORDANCE  
WITH LINES AND GRADES FURNISHED OR APPROVED BY ME, AND THAT  
THE DIAGRAM OF THE ASSESSMENT DISTRICT AND THE QUANTITIES  
OF WORK SHOWN HEREON ARE CORRECT.

CITY ENGINEER OF THE  
CITY OF RIVERSIDE, CALIFORNIA

DIAGRAM RECEIVED:

THIS DAY OF , 19

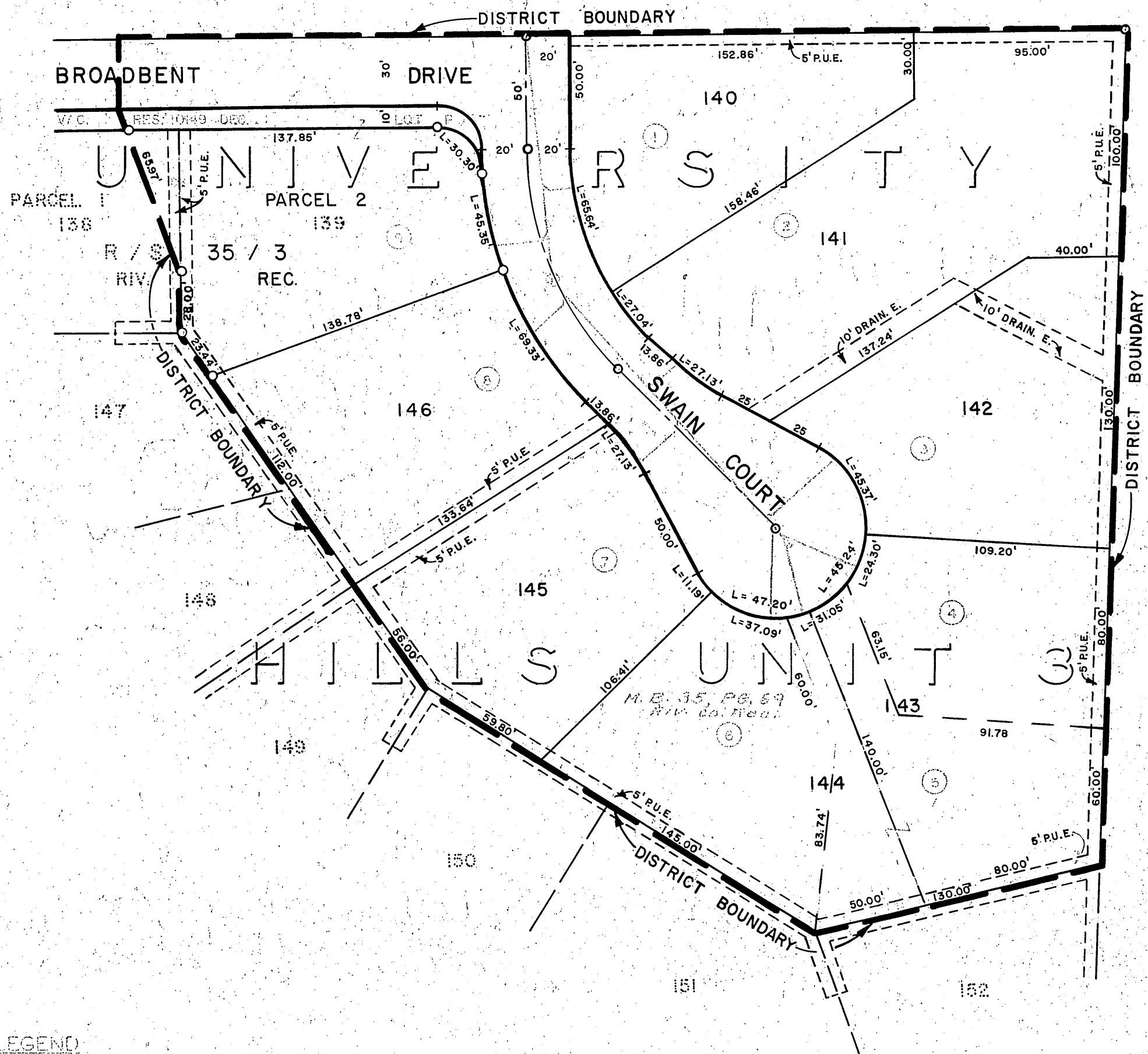
SUPERINTENDENT OF STREETS OF THE  
CITY OF RIVERSIDE, CALIFORNIA

RECORDED:

AT O'CLOCK, .M.,  
THIS DAY OF , 19

SUPERINTENDENT OF STREETS OF THE  
CITY OF RIVERSIDE, CALIFORNIA





**LEGEND**

--- INDICATES PORTIONS OF DIFFERENT LOTS TO BE ASSESSED TOGETHER.

⊙ CIRCLED NUMBER INDICATES ASSESSMENT NUMBER.

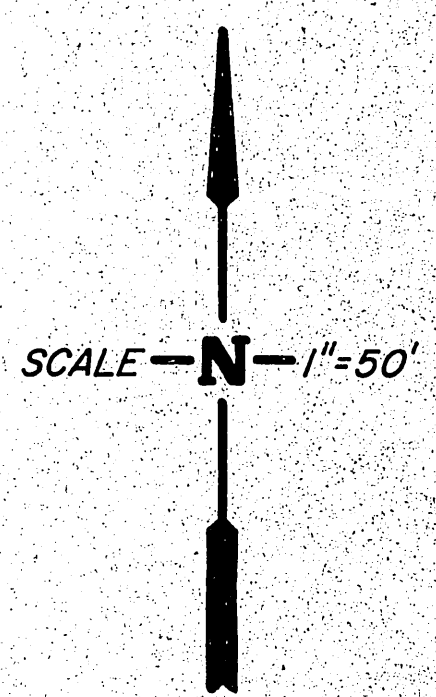


DIAGRAM OF THE PROPERTY AFFECTED OR BENEFITED BY THE WORK IN THE SWAIN COURT SANITARY SEWER DISTRICT.

REVISIONS			CITY OF RIVERSIDE, CALIFORNIA DEPARTMENT OF PUBLIC WORKS	
MARK	DATE	DESCRIPTION		
			<b>SWAIN COURT SANITARY SEWER DISTRICT</b>	
DESIGNED BY	SUBMITTED BY	APPROVED BY	PROJ. NO. 6059	
DRAWN BY J.P.G.	PARK DEPT. TRAFFIC DIV.	DIRECTOR OF PUBLIC WORKS	<b>S-641-B</b>	
CHECKED BY	RECOMMENDED BY	DATE	SHEET 2 OF 2	